

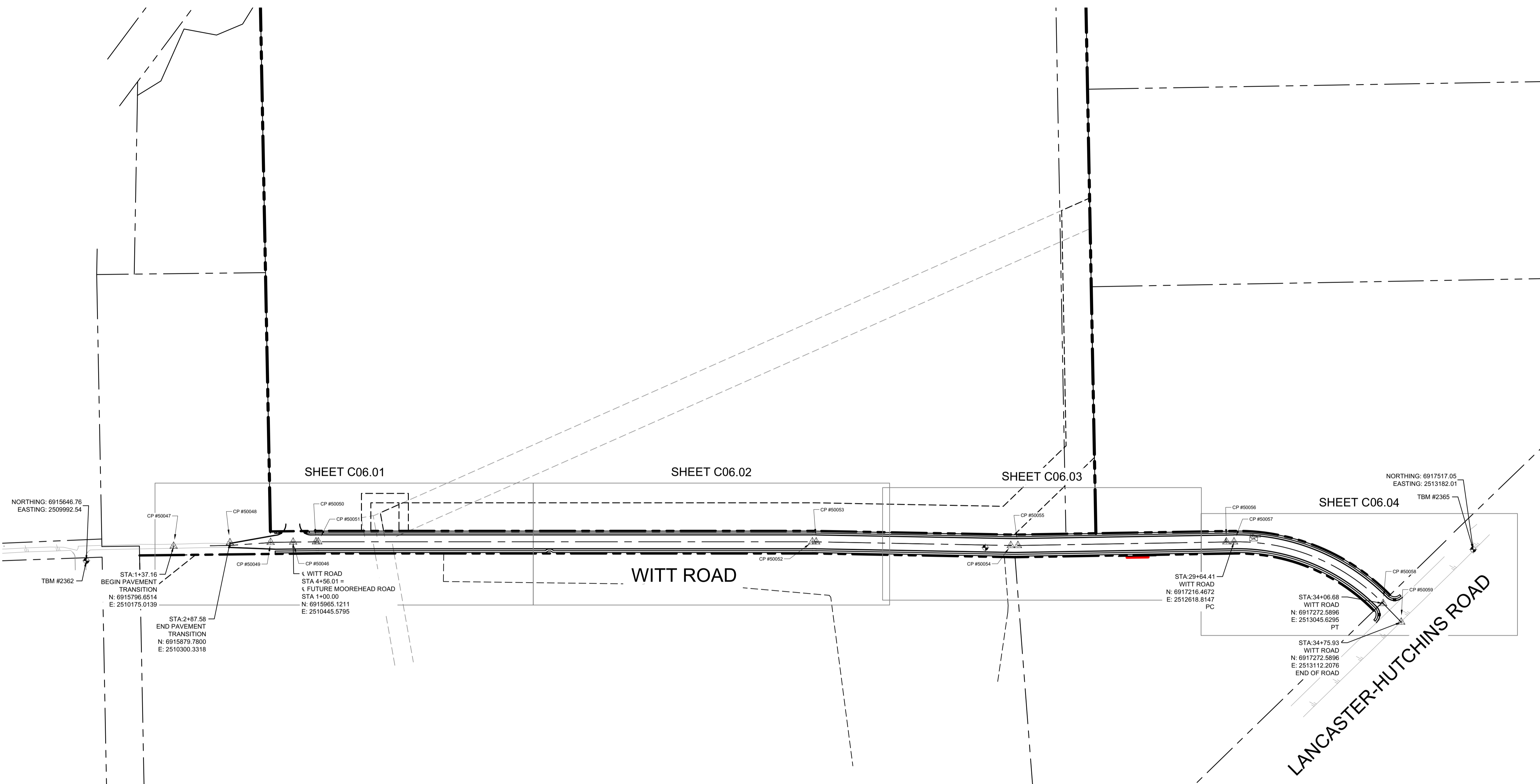
THIS SPACE RESERVED - BLDG INSPECTION

City of Dallas
REVIEW
COMPLETE
ENGINEERING
PAVING/DRAINAGE
01/12/24

THIS SPACE RESERVED - ENGINEERING

BENCHMARK LIST

TBM #2359 - COTTON SPINDLE SET ON THE EAST SIDE OF BLANCO DRIVE IN ASPHALT PAVEMENT, ±75' NORTH FROM THE CENTERLINE INTERSECTION OF E. WINTERGREEN ROAD AND BLANCO DRIVE.	ELEV. = 566.17'
TBM #2360 - COTTON SPINDLE SET ON THE WEST SIDE OF BLANCO DRIVE IN ASPHALT PAVEMENT, ±1,500' NORTH OF THE CENTERLINE INTERSECTION OF BLANCO DRIVE AND E. WINTERGREEN ROAD.	ELEV. = 559.67'
TBM #2362 - A SQUARE W/ "C" CUT ON THE BACK OF CURB TO THE NORTH ENTRANCE TO THE AUTO AUCTION, ±865' EAST OF THE INTERSECTION OF THE RAILROAD TRACKS AND WITT ROAD.	ELEV. = 558.10'
TBM #2364 - A COTTON SPINDLE SET IN THE CENTERLINE OF WITT ROAD, ±3,280' EAST OF THE INTERSECTION OF THE RAILROAD TRACKS AND WITT ROAD.	ELEV. = 541.50'
TBM #2365 - A COTTON SPINDLE SET ON THE EAST SIDE OF ASPHALT PAVEMENT AT THE INTERSECTION OF WITT ROAD AND LANCASTER HUTCHINS ROAD.	ELEV. = 558.27'



CONTROL POINT TABLE

POINT #	NORTHING	EASTING	ELEVATION	DESCRIPTION
CP #50046	6915965.12	2510445.58	558.94	START
CP #50047	6915796.65	2510175.01	559.80	START TAPER
CP #50048	6915879.78	2510300.33	559.52	END TAPER
CP #50049	6915934.58	2510393.86	559.27	PI
CP #50050	6915996.09	2510498.02	558.60	PC
CP #50051	6915999.16	2510503.29	558.56	PT
CP #50052	6916656.16	2511644.95	550.46	PC
CP #50053	6916661.12	2511653.77	550.19	PT
CP #50054	6916911.48	2512108.28	540.20	PC
CP #50055	6916920.90	2512124.70	539.52	PT
CP #50056	6917206.52	2512601.40	541.50	PI
CP #50057	6917216.71	2512619.21	542.67	PC
CP #50058	6917272.60	2513045.63	555.55	PT
CP#50059	6917253.56	2513112.20	556.72	END

CONTRACT INFORMATION

CONTRACT NO. DP23-004 DATE 12/20/23

CONTRACTOR LITHKO CONTRACTING

REVISIONS

REV NO.	DATE	DESCRIPTION	BY

Kimley»Horn

© 2023 KIMLEY-HORN AND ASSOCIATES, INC. TX F-928 PH: 972-770-1300 FAX: 972-239-3820
 13455 NOEL ROAD, TWO GALLERIA OFFICE TOWER, SUITE 700, DALLAS, TEXAS 75240
 WWW.KIMLEY-HORN.COM

PLAT NO.	BLDG PERMIT NO.	DEV ENGINEERING TRACKING NOS.
S223-021	N/A	DP23-004 WW23-295

ROADWAY CONTROL

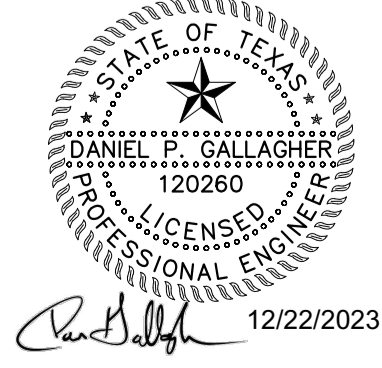
WITT ROAD IMPROVEMENTS

LOT A, BLOCK 8273

DEVELOPMENT SERVICES

CITY OF DALLAS, DALLAS COUNTY, TEXAS

REVIEWED BY:	DRAWN BY:	DATE	FILE	NUMBER	SHEET
DPG	AAS	DECEMBER 2023		XXXX	C04.00



PROJECT: 13455 Noel Road, Two Galleria Office Tower, Suite 700, Dallas, Texas 75240
 SHEET: C04.00
 DATE: 12/20/23 10:07 AM
 DRAWN BY: AAS
 CHECKED BY: DPG
 PROJECT MANAGER: PHOENIX KIMLEY-HORN AND ASSOCIATES, INC.
 PROJECT ENGINEER: DANIEL J. GALLAGHER
 PROJECT ENGINEER LICENSE NO. 120260
 STATE OF TEXAS
 LICENSED PROFESSIONAL ENGINEER