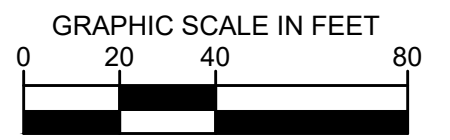
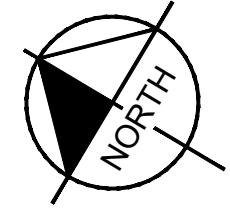
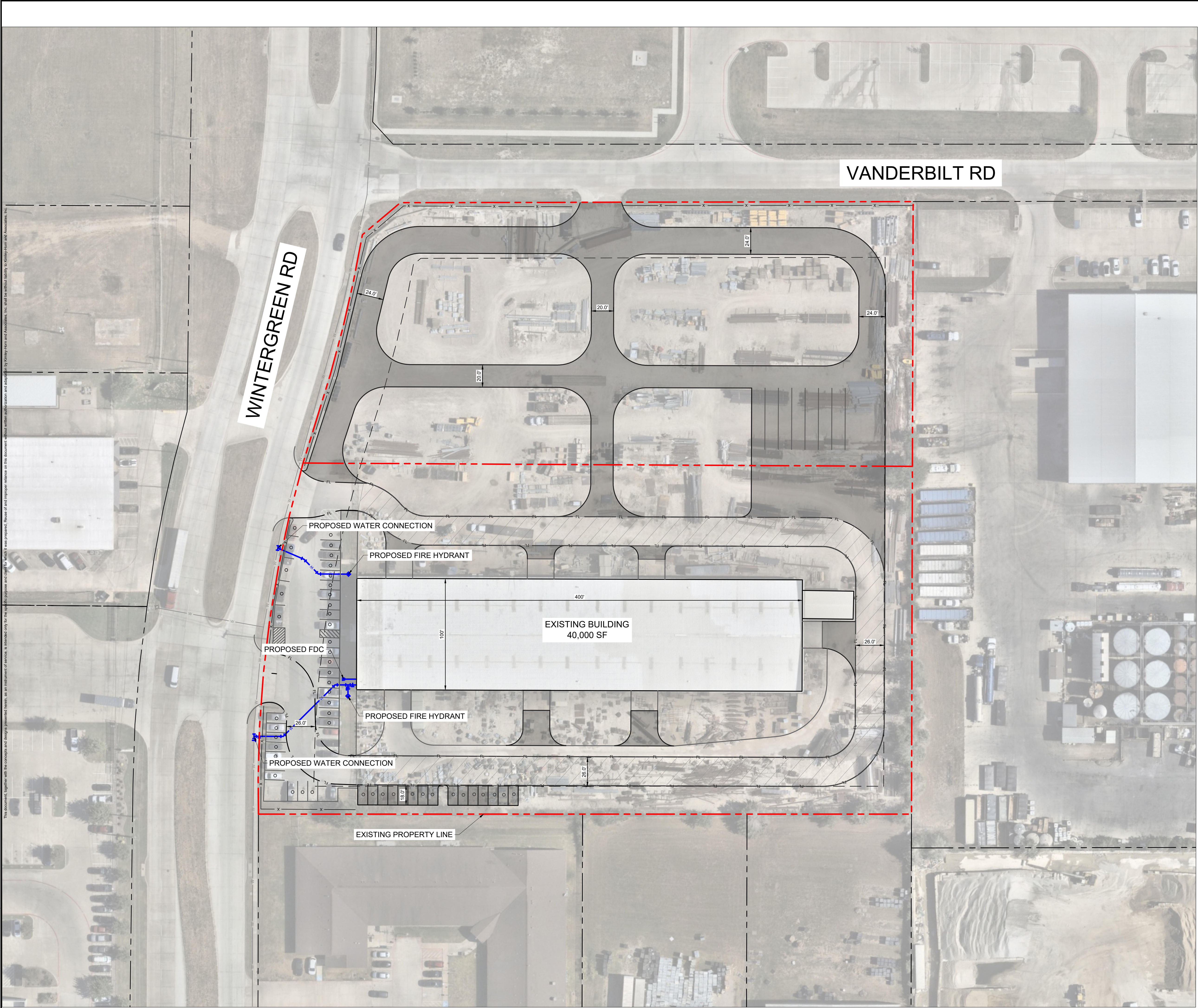


IMAGES: E:\PROJECTS\2026\0105\_1452\0001\_1452\0001\_1452.dwg, 1/10/2026, 10:00 AM, V1, 1452.dwg  
 XREFS: 1452.dwg  
 PLOTTED BY: SHARON ANDRA, 1/10/2026, 4:00 PM  
 DWG NAME: 01050105\_GSI Redevelopment - Water Exhibit.dwg

This document, together with the concepts and designs presented herein, is an instrument of service. It is intended only for the specific purpose and client for which it was prepared. No part of this document may be reproduced or transmitted in any form or by any means, electronic or mechanical, including photocopying, recording, or by any information storage and retrieval system, without the prior written permission of Kimley-Horn and Associates, Inc.



LEGEND	
PROPERTY LINE	---
ADJACENT PROPERTY LINE	- - -
PROPOSED FENCE	- x - x -
EXISTING WATER LINE	- w - w -
PROPOSED WATER LINE	- w - w -
PROPOSED FIRE HYDRANT	⊕
PROPOSED FDC	⊕
PROPOSED TEE	T
PROPOSED WATER VALVE	⊥

- FIRE SPRINKLER SPEC (BY OTHERS)**
- FURNISH AND INSTALL (1) COMPLETE WET-PIPE FIRE SPRINKLER SYSTEM DESIGNED IN ACCORDANCE WITH NFPA 13 AND HUTCHINS FIRE PREVENTION. OUR OVERHEAD SYSTEM STARTS FROM THE 6" FIRE LINE LOCATED BY THE MAN DOOR ON THE NORTHEAST CORNER OF THE BUILDING
  - WAREHOUSE AREA IS DESIGNED FOR ORDINARY HAZARD GROUP 2 OCCUPANCY USING A DESIGN CRITERIA 20 GPM OVER 1500 SQ. FT. SPRINKLER HEADS ARE BRASS 3/4" K8.0 286 DEGREE UPRIGHT HEADS. THIS DESIGN IS GOOD FOR STORAGE UP TO 12'-0" AFF MAXIMUM.
  - OFFICE AREAS: THE WET PIPE SYSTEM IS HYDRAULICALLY DESIGNED PER NFPA 13 FOR LIGHT HAZARD OCCUPANCY USING A DESIGN CRITERIA OF .10 GPM OVER 1,500 SQ. FT. REMOVAL OF CEILING FOR THE INSTALLATION OF OUR SYSTEM IS BY OTHERS.
  - INSTALL FLOW SWITCHES, PRESSURE SWITCHES AND TAMPER DEVICES AS REQUIRED. ELECTRICAL CONNECTIONS BY THE FIRE ALARM CONTRACTOR.
  - UNDERGROUND WORK STARTS AT THE 8" CITY MAIN ON THE SOUTHSIDE SIDE ON WINTERGREEN AND INCLUDES 100' IF .OF 6" DR 14 PVC PIPING. ALL TRENCHING, EMBEDDED AND BACKFILLING AS REQUIRED. INSTALL (1) 6" STAINLESS STEEL IN-BUILDING RISER WITH REQUIRED THRUST BLOCKS. ASPHALT CUT INCLUDE 60'FT. OF CUTTING, REMOVING, REPLACING AND HAUL OFF.

<b>Kimley-Horn</b>		2600 N CENTRAL EXPRESSWAY SUITE 400, RICHARDSON, TX 75080 PHONE: 972-770-1300 FAX: 972-239-8820 WWW.KIMLEY-HORN.COM TX F-328 © 2026 KIMLEY-HORN AND ASSOCIATES, INC.		
		KHA PROJECT 060033501		
DATE JANUARY 2026		SCALE AS SHOWN		
DESIGNED BY AAS		DRAWN BY AAS		
TX		CHECKED BY DSA		
<b>GSI REDEVELOPMENT</b>		<b>HUTCHINS</b>		
<b>WATER PLAN EXHIBIT</b>		SHEET NUMBER <b>EX</b>		
		REVISIONS		DATE