

**CITY OF HUTCHINS
ORDINANCE NO. 2026-06-1223**

AN ORDINANCE OF THE CITY OF HUTCHINS, TEXAS, AMENDING THE COMPREHENSIVE ZONING ORDINANCE AND MAP OF THE CITY OF HUTCHINS, TEXAS, AS HERETOFORE AMENDED, BY GRANTING A CHANGE IN ZONING BY GRANTING A SPECIFIC USE PERMIT (“SUP”) WITH SPECIAL CONDITIONS TO ALLOW A REHABILITATION CARE FACILITY (HALFWAY HOUSE) ON LAND ZONED LIGHT INDUSTRIAL (“LI”) CONSISTING OF ±0.1446 ACRES OF LAND, SITUATED IN THE STEPHEN C. ATTERBURY SURVEY, ABSTRACT NO. 15, CITY OF HUTCHINS, DALLAS COUNTY, TEXAS, MORE COMMONLY KNOWN AS 800 WEST WINTERGREEN ROAD, HUTCHINS, DALLAS COUNTY, TEXAS, AND BEING MORE PARTICULARLY DESCRIBED AND SHOWN IN EXHIBIT “A” ATTACHED HERETO; PROVIDING FOR THE APPROVAL OF THE PROPOSED SITE PLAN ATTACHED HERETO AS EXHIBIT “B”; PROVIDING A CONFLICTS CLAUSE; PROVIDING A REPEALING CLAUSE; PROVIDING A SEVERABILITY CLAUSE; PROVIDING A SAVINGS CLAUSE; PROVIDING FOR PENALTY OF FINE NOT TO EXCEED THE SUM OF TWO THOUSAND DOLLARS (\$2,000.00) FOR EACH OFFENSE; AND PROVIDING FOR AN EFFECTIVE DATE.

WHEREAS, the City Council of the City of Hutchins, in compliance with the laws of the State of Texas, with references to the granting of zoning classification changes, have given the requisite notices by publication and otherwise, and have held due hearings and afforded a full and fair hearing to all property owners generally and to all persons interested and situated in the affected area and in the vicinity thereof; the said governing body is of the opinion that the Specific Use Permit zoning application should be approved; and, in the exercise of legislative discretion, has concluded that the Comprehensive Zoning Ordinance and Map of the City of Hutchins should be amended.

NOW, THEREFORE, BE IT ORDAINED BY THE CITY COUNCIL OF THE CITY OF HUTCHINS, TEXAS:

SECTION 1. That the Comprehensive Zoning Ordinance and Map of the City of Hutchins, Texas, be and the same are hereby amended by granting a Specific Use Permit (“SUP”) to allow a Rehabilitation Care Facility (Halfway House) on land zoned Light Industrial (“LI”) consisting of ±.01446 acres of land, situated in the Stephen C. Atterbury Survey, Abstract No. 15, City of Hutchins, Dallas County, Texas, more commonly known as 800 West Wintergreen Road, Hutchins, Dallas County, Texas, (the “Property”) and being more particularly described in Exhibit “A” attached hereto and made a part hereof for all purposes.

SECTION 2. That the Property shall be developed and used in accordance with the development regulations for Light Industrial (“LI”) as established in Section 28 of the Hutchins Zoning Code, with the following special conditions:

- A. Site Plan. The Property shall be developed and used substantially in accordance with the Site Plan attached hereto as Exhibit “B” which is hereby approved.

SECTION 3. That the property shall be used only in the manner and for the purposes provided for by the Comprehensive Zoning Ordinance of the City of Hutchins, Texas, as heretofore amended, and as amended herein; and which is hereby approved.

SECTION 4. That, to the extent of any irreconcilable conflict with the provisions of this ordinance and other ordinances of the City of Hutchins governing the use and development of the Property and which are not expressly amended by this ordinance, the provisions of this ordinance shall be controlling.

SECTION 5. That all provisions of the Ordinances of the City of Hutchins, Texas, in conflict with the provisions of this Ordinance be, and the same are hereby, repealed, and all other provisions of the Ordinances of the City of Hutchins, Texas, not in conflict with the provisions of this Ordinance shall remain in full force and effect.

SECTION 6. That should any word, sentence, paragraph, subdivision, clause, phrase or section of this Ordinance be adjudged or held to be unconstitutional, illegal or invalid, the same shall not affect the validity of this Ordinance as a whole, or any part or provision thereof other than the part so decided to be invalid, illegal or unconstitutional, and shall not affect the validity of the Comprehensive Zoning Ordinance as a whole.

SECTION 7. An offense committed before the effective date of this ordinance is governed by prior law and the provisions of the Ordinances of the City of Hutchins, as amended, in effect when the offense was committed, and the former law is continued in effect for this purpose.

SECTION 8. That any person, firm or corporation violating any of the provisions or terms of this Ordinance shall be subject to the same penalty as provided for in the Comprehensive Zoning Ordinance of the City of Hutchins, as heretofore amended, and upon conviction shall be punished by a fine not to exceed the sum of Two Thousand Dollars (\$2,000.00) for each offense; and each and every day such violation shall continue shall be deemed to constitute a separate offense.

SECTION 9. This Ordinance shall take effect immediately from and after its passage and the publication of the caption, as the law and charter in such cases provides.

DULY PASSED AND ADOPTED BY THE CITY COUNCIL OF THE CITY OF HUTCHINS, TEXAS ON THIS THE 1st DAY OF JUNE 2026.

APPROVED:

Mario Vasquez, Mayor

APPROVED AS TO FORM:

Joseph J. Gorfida, Jr., City Attorney
(05-06-2026: 4925-1778-5769, v. 1)

ATTEST:

Cynthia Olguin, City Secretary

Exhibit "A"
Property Description

EXHIBIT B

**RIGHT-OF-WAY DEDICATION
FOR WINTERGREEN ROAD
STEPHEN C. ATTERBURY SURVEY - ABSTRACT NO. 15
CITY OF HUTCHINS, DALLAS COUNTY, TEXAS**

METES AND BOUNDS

0.1446 Acres
Stephen C. Atterbury Survey, Abstract No. 15
City of Hutchins, Dallas County, Texas

BEING a tract of land situated in the Stephen C. Atterbury Survey, Abstract No. 15, City of Hutchins, Dallas County, Texas, and being a portion of a called 2.297 acre tract of land described in the Special Warranty Deed from Volunteers of America Northern Development Corporation, Inc. to Volunteers of America Northern Texas, Inc., recorded in Volume 95060, Page 3347 of the Deed Records of Dallas County, Texas (hereinafter referred to as DRDCT), with the herein described tract of land being further described as held on the ground by metes and bounds as follows:

BEGINNING at a 5/8-inch iron rod with "KHA" cap set (herein after referred to as 5/8-inch iron rod set) in the intersection of the south right of way line of Wintergreen, a called 60 foot wide right of way and the east right of way line of Carpenter Road;

THENCE North 59°20'37" East, along the south line of Wintergreen Road, a distance of **316.96 feet** to a 5/8-inch iron rod set for the northwest corner of a called 4.355 acre tract of land described in the Warranty Deed from Gordon's Special, Inc. to TF & W Properties, LP., recorded in Volume 99170, Page 3973 - DRDCT;

THENCE South 30°47'04" East, along the west line of TF & W tract, a distance of 18.59 feet to a 5/8-inch iron rod set for corner;

THENCE crossing the Volunteers tract the following courses and distances:

South 59°16'50" West, a distance of **291.71 feet** to a 5/8-inch iron rod set;

South 15°42'18" West, a distance of **37.88 feet** to a 5/8-inch iron rod set for corner in the east line of Carpenter Road;

THENCE North 27°57'00" West, along the east line of Carpenter Road, a distance of **45.11 feet** to the **POINT OF BEGINNING**, and containing 0.1446 acres, more or less.

Bearing system based upon the Texas Coordinate System of 1983, North Central Zone (Grid Azimuth)



FILE: \\S:\PROPERTY\04202001\520415\01-01-WINTERGREEN-ROB-EX-15.dwg (S:\DLE*RD) 4/18/2007 2:47pm
Mark

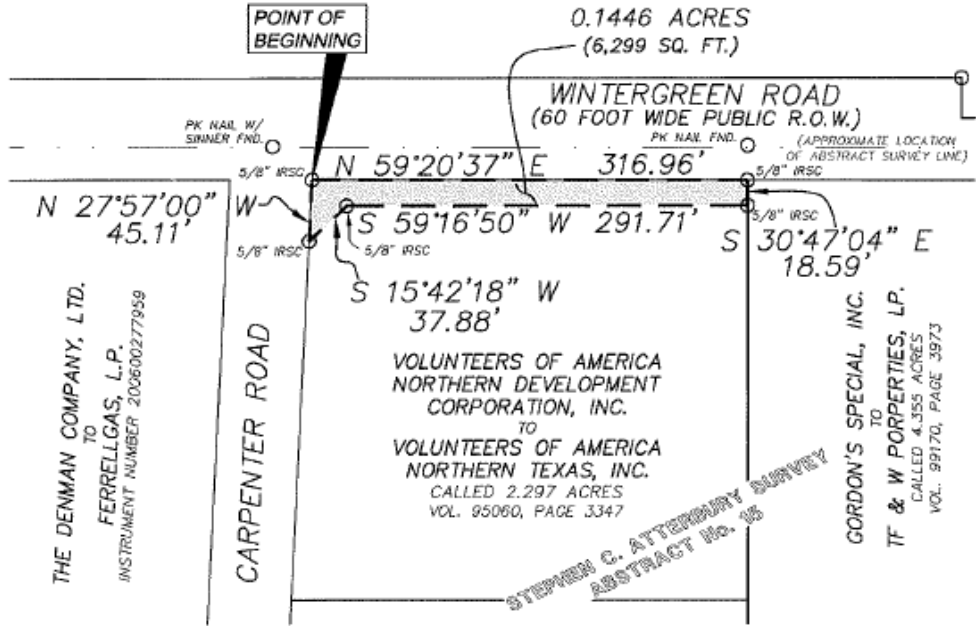
Exhibit "A"
Property Description

EXHIBIT B

**RIGHT-OF-WAY DEDICATION
FOR WINTERGREEN ROAD
STEPHEN C. ATTERBURY SURVEY - ABSTRACT NO. 15
CITY OF HUTCHINS, DALLAS COUNTY, TEXAS**

*WILLIAM GATLIN SURVEY
ABSTRACT No. 499*

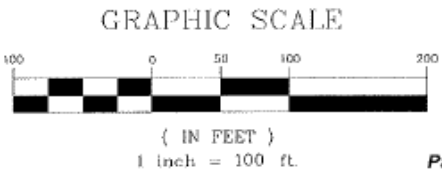
1086 CAPITAL PARTNERS I,
L.P. AND 1086
HUTCHINS/WILMER L.P.
TO
DLH MASTER PARCEL #5,
L.P.
CALLED 134.44 ACRES
INSTRUMENT NUMBER 200600054943



LEGEND

- IRF - IRON ROD FOUND
- IRFC - CAPPED IRON ROD FOUND
- IRSC - CAPPED IRON ROD SET
- CM - CONTROL MONUMENT

Note:
Bearing system based upon the Texas Coordinate System of 1983, North Central Zone (Grid Azimuth)

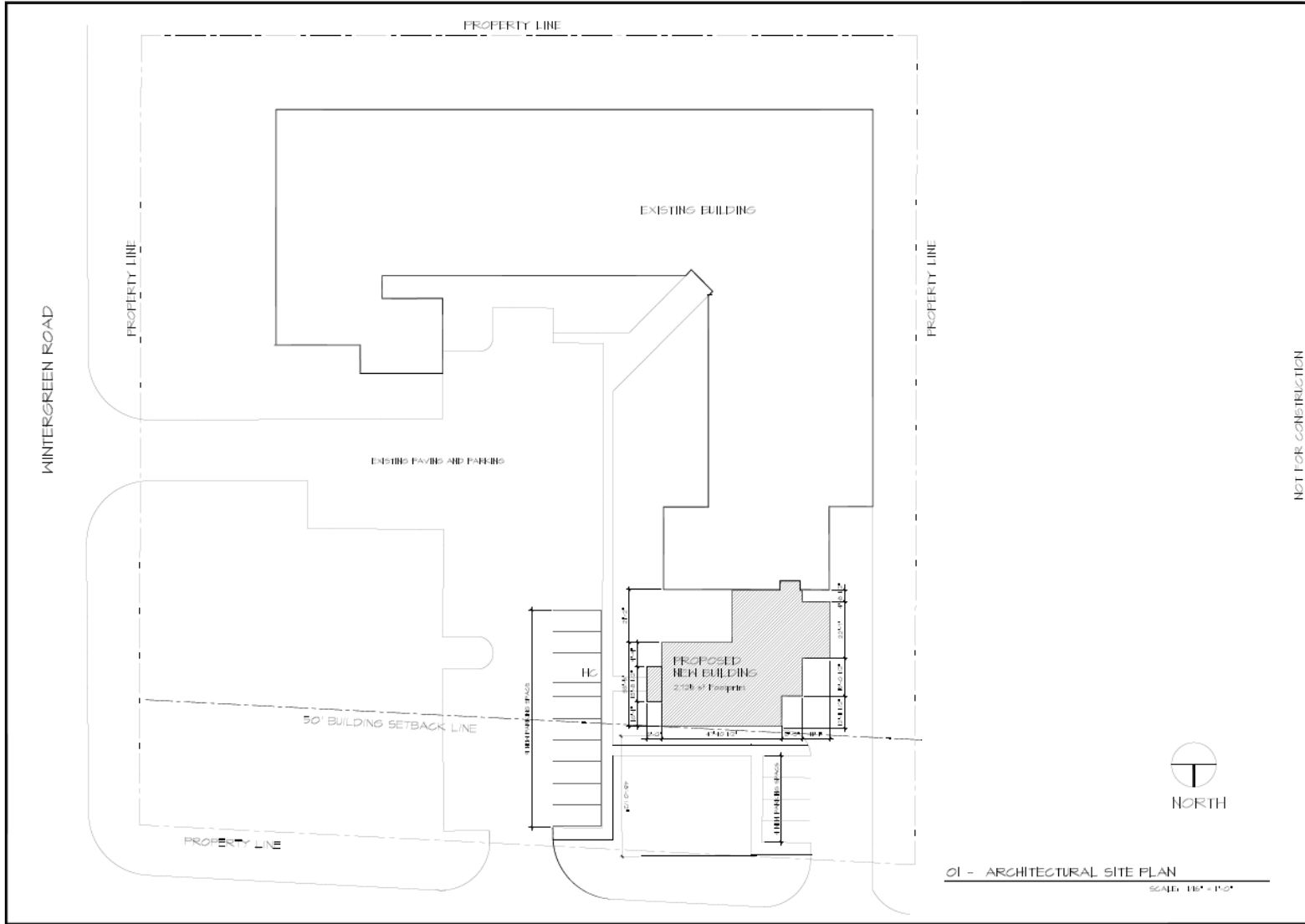


File: C:\SURVEY\84282001\EXHIB 1- WINTERGREEN ROW-EXT.dwg (SHEET 1) 4/16/2007 2:46pm Xrefs.



EXHIBIT "B"

Site Plan



01 - ARCHITECTURAL SITE PLAN
SCALE: 1/8" = 1'-0"

NOT FOR CONSTRUCTION

DATE: 07-23-25
14:04:46

RESIDENTIAL FACILITY ADDITION
 700 LINDSEY OF AMERICA - TEXAS
 300 W. WINTERGREEN RD.
 HUTCHINS, TX 75451

ICEMIPE ARCHITECTS, LLC
 1415 SOUTH WYLER, SUITE 100, DALLAS, TX 75241-1551
 972-248-2248 FAX: 972-248-1551

S1

USE 2024-11

Progress set:



NOT FOR CONSTRUCTION

DATE: 07-15-24
 REVISIONS:

RESIDENTIAL FACILITY ADDITION
 COUNTRIES OF AMERICA - TEXAS
 200 PALMCREEN RD.
 HUTCHINS, TX 75111

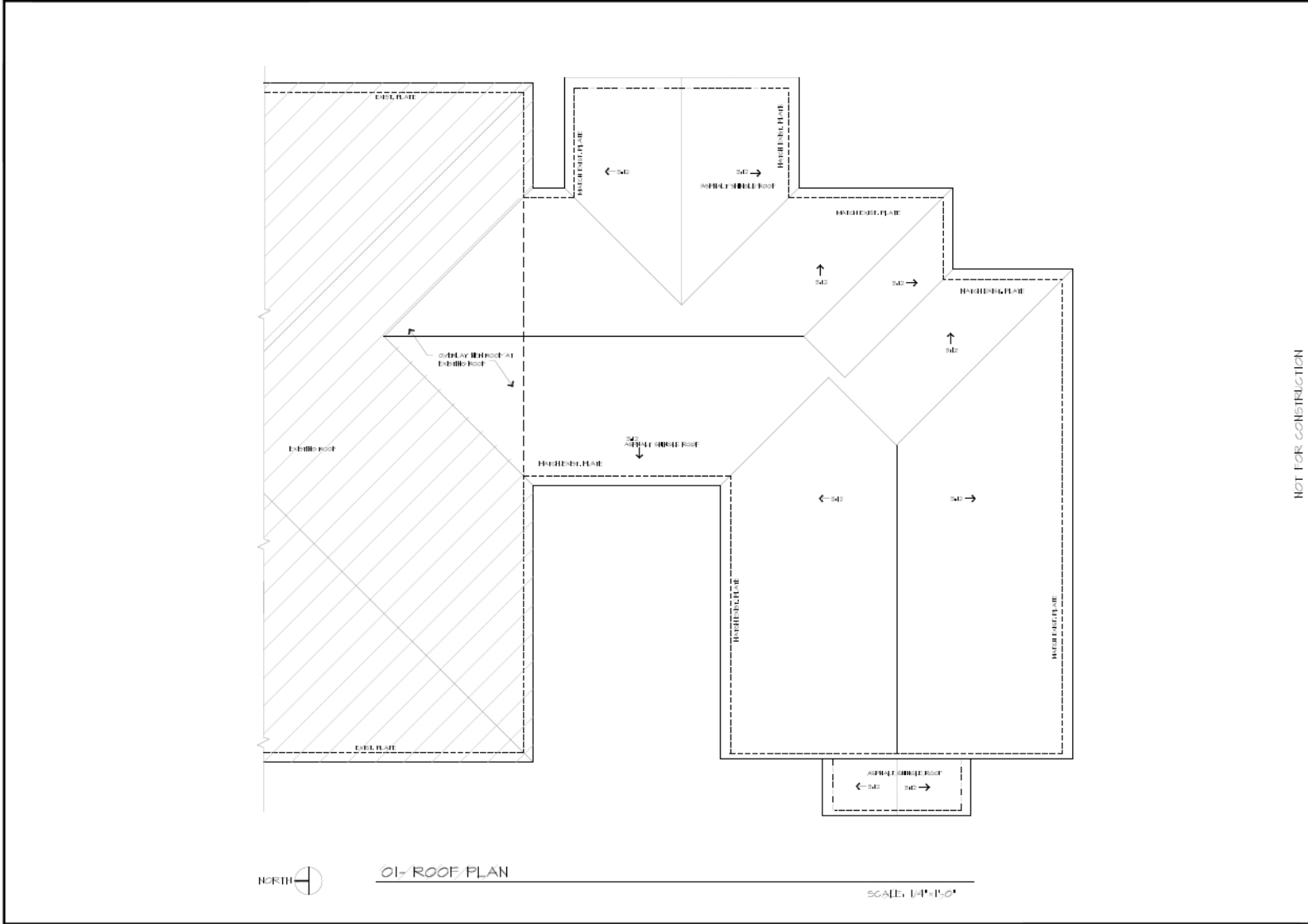
Progress set:



EMPIRE ARCHITECTS LLC
 ARCHITECTS
 10000 HALLAM TRL. SUITE 2800 DALLAS, TX 75248-2800
 (972) 214-1057

A2

DATE: 07-15-24



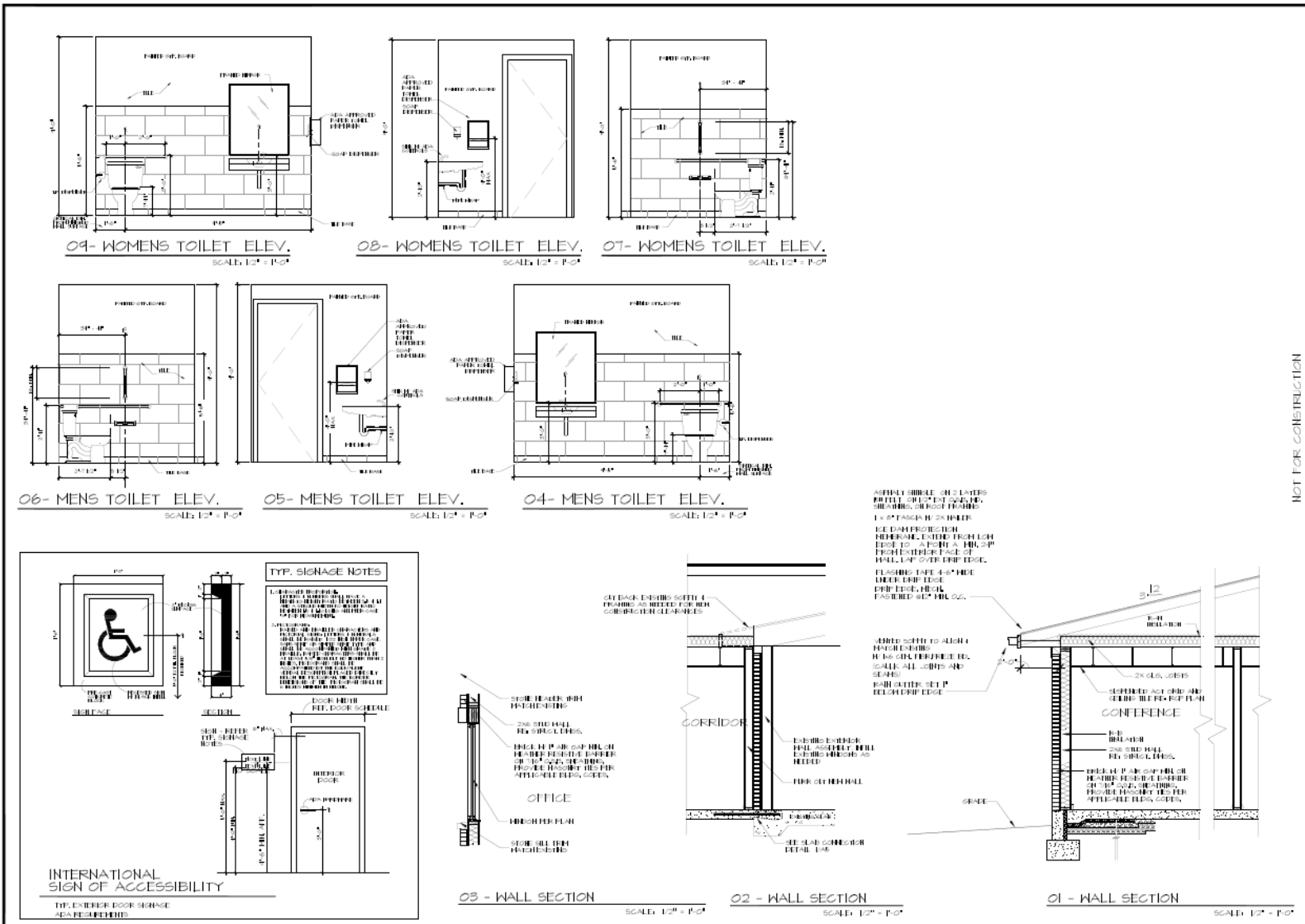
NOT FOR CONSTRUCTION

Process set:

IKEMIRE ARCHITECTS LLC
 ARCHITECTS • PLANNERS • INTERIORS
 16800 ELLIS HWY. • SUITE 200 • TULLAH, TN 37388 • TEL: 615-248-2488 • FAX: 615-248-1005

RESIDENTIAL FACILITY ADDITION
 VOLUNTEERS OF AMERICA - TEXAS
 800 N. WHITE PINE RD.
 HUTCHINS, TX 75451

A3



DATE: 07/20/24
REVISIONS:

RESIDENTIAL FACILITY ADDITION
VOLUNTEERS OF AMERICA - TEXAS
300 W. PINE GREEN RD.
HUTCHINS, TX 75111

progress set:

IKEMIRE ARCHITECTS LLC
4100 W. 14TH ST. SUITE 200
DALLAS, TX 75244-2548
FAX: 214-488-8572

A4

GENERAL FINISH NOTE

- GENERAL CONTRACTOR TO COORDINATE WITH OWNER OR OTHER REPRESENTATIVE REGARDING ALL DOOR FINISHES.
- ALL INTERIOR FINISHES ARE TO MEET ALL APPLICABLE CODE REQUIREMENTS.
- PROVIDE SCHEDULE FINISHES WHERE FLOOR FINISHES START CHANGE OF TERMINAL.
- FINISHES/GRIPS AT DOORWAYS TO BE LOCATED AT DOOR CENTERLINE.
- HALL BASE TO BE PROVIDED AT LOCATIONS DETERMINED BY OWNER AND GENERAL CONTRACTOR.
- HALLWAY HALL BASE IS LOCATED FROM THE PROPOSED CORNER POINTS.
- ALL CORNERHILL HALL FINISHES MUST HAVE A CLASS "A" FINISH OR BETTER.
- ANY EXPOSED WALL TO BE FINISH UNLESS IT IS SHOWN OTHERWISE.
- DOOR FINISH SCHEDULE TO HAVE AND FINISHES SELECTED TO BE BY OWNER.

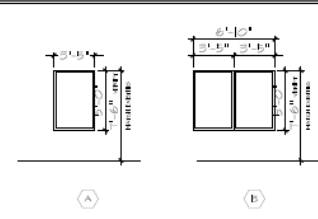
GENERAL WALL NOTE:

- WALL FINISHES ARE TO BE DETERMINED FROM FINISH SCHEDULE OF 2 THE GENERAL CONTRACTOR. FINISHES TO BE DETERMINED BY OWNER AND GENERAL CONTRACTOR. FINISHES TO BE DETERMINED BY OWNER AND GENERAL CONTRACTOR.

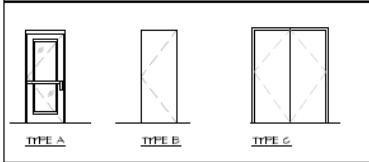
DOOR AND WINDOW NOTES

- ALL INTERIOR DOORS TO BE IDENTICAL UNLESS OTHERWISE NOTED TO BE OTHERWISE.
- ALL DOORS AND WINDOWS TO COMPLY WITH THE 2021 INTERNATIONAL BUILDING CODES WHERE APPLICABLE.
- ALL GLASS TO BE TINTED UNLESS OTHERWISE NOTED TO BE OTHERWISE.
- LOCKS OR LATCHES AT ALL EXTERIOR DOORS SHALL BE PROVIDED FROM INSIDE UNLESS THE USE OF A KEY OR ANY SPECIAL REQUIREMENTS ARE NOTED.
- ALL INTERIOR DOORS TO HAVE 2" FLOOR STEPS.
- ALL DOORS TO HAVE 2" FLOOR STEPS AS REQUIRED BY LOCAL CODES AND MANUFACTURERS.
- REFER TO SCHEDULE FOR ADDITIONAL OR SPECIFIC NOTES.

WINDOW ELEVATIONS



DOOR STYLES



INTERIOR FINISH SELECTIONS	
WALL	F-1 SHEETROCK WALLS. EPOXYWALL COLOR TO BE SELECTED BY OWNER.
	F-2 SHEETROCK WALLS. EPOXYWALL COLOR TO BE SELECTED BY OWNER.
FLOORING	F-1 CARPET TILE. COLOR TO BE SELECTED BY OWNER.
	F-2 LAMINATE FLOORING. STYLE AND COLOR TO BE DETERMINED BY ARCHITECT.
	F-3 TILE
FLOOR BASE	F-1 1/2" CORE VINYL BASE
	F-2 TILE
CEILING FINISH	SC-1 SUSPENDED CEILING TO BE SELECTED BY OWNER.
DOORS	SC-1 ACCELATION

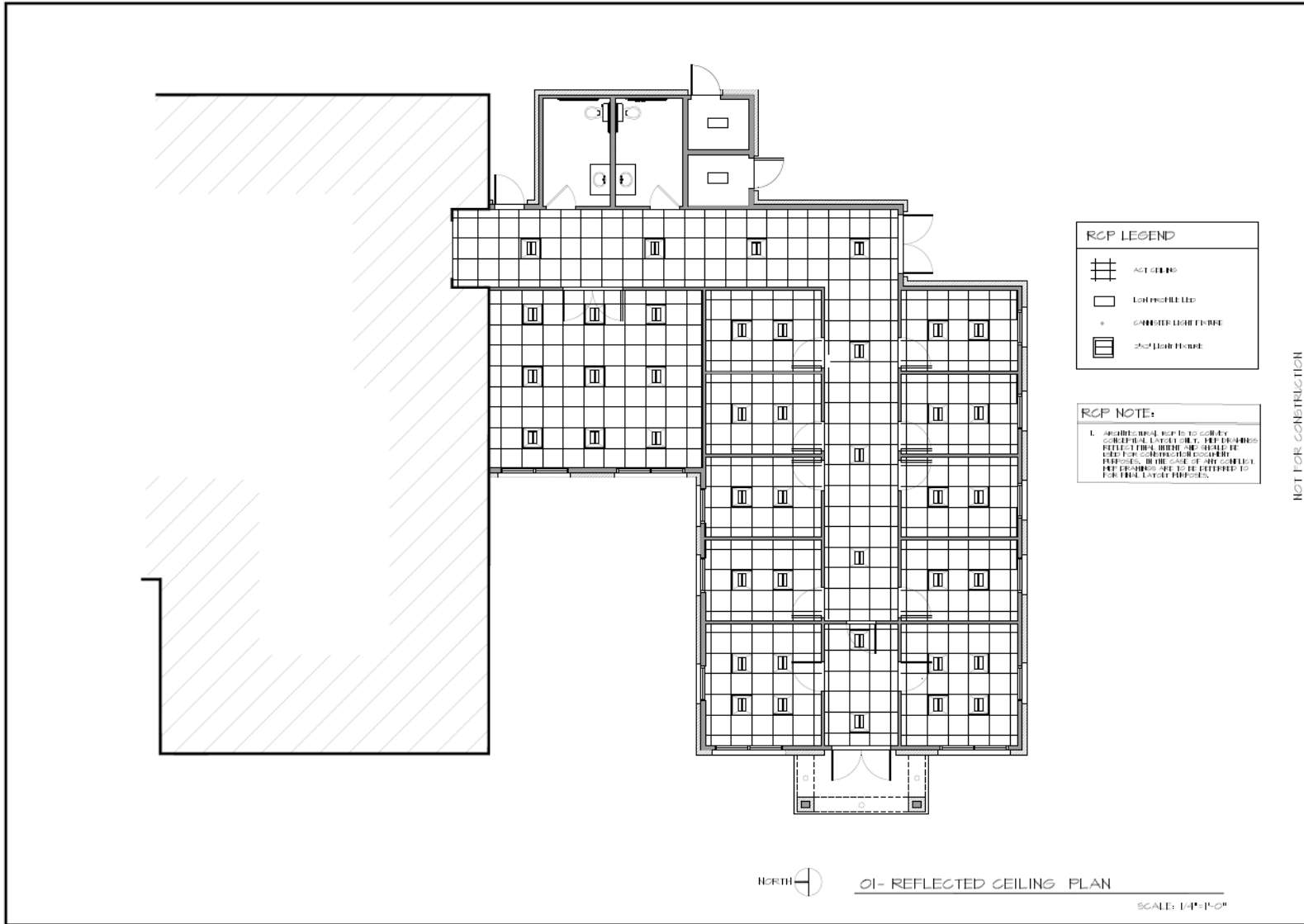
1. ALL MANUFACTURERS REQUIRED FOR STANDARD TYPE AND QUALITY. EQUAL OR BETTER PRODUCTS MAY BE SUBMITTED FOR APPROVAL BY THE OWNER.

FINISH SCHEDULE										
ROOM NO.	ROOM NAME	WALLS	FLOOR	CEILING	DOORS	GLASS	FINISH	WALL	DOORS	NOTES
101	OFFICE 01	F-1	F-1	F-1	F-1	GL	F-1	F-1		
102	OFFICE 02	F-1	F-1	F-1	F-1	GL	F-1	F-1		
103	OFFICE 03	F-1	F-1	F-1	F-1	GL	F-1	F-1		
104	OFFICE 04	F-1	F-1	F-1	F-1	GL	F-1	F-1		
105	OFFICE 05	F-1	F-1	F-1	F-1	GL	F-1	F-1		
106	OFFICE 06	F-1	F-1	F-1	F-1	GL	F-1	F-1		
107	OFFICE 07	F-1	F-1	F-1	F-1	GL	F-1	F-1		
108	OFFICE 08	F-1	F-1	F-1	F-1	GL	F-1	F-1		
109	OFFICE 09	F-1	F-1	F-1	F-1	GL	F-2	F-1		
110	OFFICE 10	F-1	F-1	F-1	F-1	GL	F-1	F-1		
111	RESEMBLE	F-1	F-1	F-1	F-1	GL	F-1	F-1		
112	CORRIDOR	F-2	F-2	F-2	F-2	GL	F-2	F-1		
113	CONFERENCE ROOM	F-2	F-2	F-2	F-2	GL	F-2	F-1		
114	MEETING	F-2	F-2	F-2	F-2	GL	F-3	F-2	ALL FINISHES	
115	HALL	F-1	F-1	F-1	F-1	GL	F-3	F-2	ALL FINISHES	
116	ELEV.	F-1	F-1	F-1	F-1	-	-	-		
117	OFFICE 11	F-1	F-1	F-1	F-1	-	-	-		

- PROVIDE SCHEDULE FINISHES WHERE FLOOR FINISHES START CHANGE OF TERMINAL.
- FINISHES/GRIPS AT DOORWAYS TO BE LOCATED AT DOOR CENTERLINE.
- HALL BASE TO BE PROVIDED AT LOCATIONS DETERMINED BY OWNER AND GENERAL CONTRACTOR.
- HALLWAY HALL BASE IS LOCATED FROM THE PROPOSED CORNER POINTS.
- ALL CORNERHILL HALL FINISHES MUST HAVE A CLASS "A" FINISH OR BETTER.
- ANY EXPOSED WALL TO BE FINISH UNLESS IT IS SHOWN OTHERWISE.
- ALL DOOR FINISHES TO HAVE AND FINISHES SELECTED TO BE BY OWNER.
- DOOR FINISH SCHEDULE TO HAVE AND FINISHES SELECTED TO BE BY OWNER.

DOOR SCHEDULE

DOOR NO.	BL. FIN.	DOOR SIZE	DOOR STYLE	DESCRIPTION	GLASS TYPE	DOOR TYPE	DOOR FIN.	DOOR GRIP	DOOR LOCK	DOOR HINGES	LOCATION
101	BL.	3'-0" X 8'-0" X 1'-0"	A	SOLID FRONT	SMALL GLASS	ALUM.	ALUM.	ALUM.	ALUM.		OFFICE
102	BL.	3'-0" X 8'-0" X 1'-0"	A	SOLID FRONT	SMALL GLASS	ALUM.	ALUM.	ALUM.	ALUM.		OFFICE
103	BL.	3'-0" X 8'-0" X 1'-0"	A	SOLID FRONT	SMALL GLASS	ALUM.	ALUM.	ALUM.	ALUM.		OFFICE
104	BL.	3'-0" X 8'-0" X 1'-0"	A	SOLID FRONT	SMALL GLASS	ALUM.	ALUM.	ALUM.	ALUM.		OFFICE
105	BL.	3'-0" X 8'-0" X 1'-0"	A	SOLID FRONT	SMALL GLASS	ALUM.	ALUM.	ALUM.	ALUM.		OFFICE
106	BL.	3'-0" X 8'-0" X 1'-0"	A	SOLID FRONT	SMALL GLASS	ALUM.	ALUM.	ALUM.	ALUM.		OFFICE
107	BL.	3'-0" X 8'-0" X 1'-0"	A	SOLID FRONT	SMALL GLASS	ALUM.	ALUM.	ALUM.	ALUM.		OFFICE
108	BL.	3'-0" X 8'-0" X 1'-0"	A	SOLID FRONT	SMALL GLASS	ALUM.	ALUM.	ALUM.	ALUM.		OFFICE
109	BL.	3'-0" X 8'-0" X 1'-0"	A	SOLID FRONT	SMALL GLASS	ALUM.	ALUM.	ALUM.	ALUM.		OFFICE
110	BL.	3'-0" X 8'-0" X 1'-0"	A	SOLID FRONT	SMALL GLASS	ALUM.	ALUM.	ALUM.	ALUM.		OFFICE
111	BL.	3'-0" X 8'-0" X 1'-0"	A	SOLID FRONT	SMALL GLASS	ALUM.	ALUM.	ALUM.	ALUM.		OFFICE
112	BL.	3'-0" X 8'-0" X 1'-0"	A	SOLID FRONT	SMALL GLASS	ALUM.	ALUM.	ALUM.	ALUM.		OFFICE
113	BL.	3'-0" X 8'-0" X 1'-0"	A	SOLID FRONT	SMALL GLASS	ALUM.	ALUM.	ALUM.	ALUM.		OFFICE
114	BL.	3'-0" X 8'-0" X 1'-0"	A	SOLID FRONT	SMALL GLASS	ALUM.	ALUM.	ALUM.	ALUM.		OFFICE
115	BL.	3'-0" X 8'-0" X 1'-0"	A	SOLID FRONT	SMALL GLASS	ALUM.	ALUM.	ALUM.	ALUM.		OFFICE
116	BL.	3'-0" X 8'-0" X 1'-0"	A	SOLID FRONT	SMALL GLASS	ALUM.	ALUM.	ALUM.	ALUM.		OFFICE
117	BL.	3'-0" X 8'-0" X 1'-0"	A	SOLID FRONT	SMALL GLASS	ALUM.	ALUM.	ALUM.	ALUM.		OFFICE
118	BL.	3'-0" X 8'-0" X 1'-0"	A	SOLID FRONT	SMALL GLASS	ALUM.	ALUM.	ALUM.	ALUM.		OFFICE
119	BL.	3'-0" X 8'-0" X 1'-0"	A	SOLID FRONT	SMALL GLASS	ALUM.	ALUM.	ALUM.	ALUM.		OFFICE
120	BL.	3'-0" X 8'-0" X 1'-0"	A	SOLID FRONT	SMALL GLASS	ALUM.	ALUM.	ALUM.	ALUM.		OFFICE
121	BL.	3'-0" X 8'-0" X 1'-0"	A	SOLID FRONT	SMALL GLASS	ALUM.	ALUM.	ALUM.	ALUM.		OFFICE
122	BL.	3'-0" X 8'-0" X 1'-0"	A	SOLID FRONT	SMALL GLASS	ALUM.	ALUM.	ALUM.	ALUM.		OFFICE
123	BL.	3'-0" X 8'-0" X 1'-0"	A	SOLID FRONT	SMALL GLASS	ALUM.	ALUM.	ALUM.	ALUM.		OFFICE
124	BL.	3'-0" X 8'-0" X 1'-0"	A	SOLID FRONT	SMALL GLASS	ALUM.	ALUM.	ALUM.	ALUM.		OFFICE
125	BL.	3'-0" X 8'-0" X 1'-0"	A	SOLID FRONT	SMALL GLASS	ALUM.	ALUM.	ALUM.	ALUM.		OFFICE
126	BL.	3'-0" X 8'-0" X 1'-0"	A	SOLID FRONT	SMALL GLASS	ALUM.	ALUM.	ALUM.	ALUM.		OFFICE
127	BL.	3'-0" X 8'-0" X 1'-0"	A	SOLID FRONT	SMALL GLASS	ALUM.	ALUM.	ALUM.	ALUM.		OFFICE
128	BL.	3'-0" X 8'-0" X 1'-0"	A	SOLID FRONT	SMALL GLASS	ALUM.	ALUM.	ALUM.	ALUM.		OFFICE
129	BL.	3'-0" X 8'-0" X 1'-0"	A	SOLID FRONT	SMALL GLASS	ALUM.	ALUM.	ALUM.	ALUM.		OFFICE
130	BL.	3'-0" X 8'-0" X 1'-0"	A	SOLID FRONT	SMALL GLASS	ALUM.	ALUM.	ALUM.	ALUM.		OFFICE
131	BL.	3'-0" X 8'-0" X 1'-0"	A	SOLID FRONT	SMALL GLASS	ALUM.	ALUM.	ALUM.	ALUM.		OFFICE
132	BL.	3'-0" X 8'-0" X 1'-0"	A	SOLID FRONT	SMALL GLASS	ALUM.	ALUM.	ALUM.	ALUM.		OFFICE
133	BL.	3'-0" X 8'-0" X 1'-0"	A	SOLID FRONT	SMALL GLASS	ALUM.	ALUM.	ALUM.	ALUM.		OFFICE
134	BL.	3'-0" X 8'-0" X 1'-0"	A	SOLID FRONT	SMALL GLASS	ALUM.	ALUM.	ALUM.	ALUM.		OFFICE
135	BL.	3'-0" X 8'-0" X 1'-0"	A	SOLID FRONT	SMALL GLASS	ALUM.	ALUM.	ALUM.	ALUM.		OFFICE
136	BL.	3'-0" X 8'-0" X 1'-0"	A	SOLID FRONT	SMALL GLASS	ALUM.	ALUM.	ALUM.	ALUM.		OFFICE
137	BL.	3'-0" X 8'-0" X 1'-0"	A	SOLID FRONT	SMALL GLASS	ALUM.	ALUM.	ALUM.	ALUM.		OFFICE
138	BL.	3'-0" X 8'-0" X 1'-0"	A	SOLID FRONT	SMALL GLASS	ALUM.	ALUM.	ALUM.	ALUM.		OFFICE
139	BL.	3'-0" X 8'-0" X 1'-0"	A	SOLID FRONT	SMALL GLASS	ALUM.	ALUM.	ALUM.	ALUM.		OFFICE
140	BL.	3'-0" X 8'-0" X 1'-0"	A	SOLID FRONT	SMALL GLASS	ALUM.	ALUM.	ALUM.	ALUM.		OFFICE
141	BL.	3'-0" X 8'-0" X 1'-0"	A	SOLID FRONT	SMALL GLASS	ALUM.	ALUM.	ALUM.	ALUM.		OFFICE
142	BL.	3'-0" X 8'-0" X 1'-0"	A	SOLID FRONT	SMALL GLASS	ALUM.	ALUM.	ALUM.	ALUM.		OFFICE
143	BL.	3'-0" X 8'-0" X 1'-0"	A	SOLID FRONT	SMALL GLASS	ALUM.	ALUM.	ALUM.	ALUM.		OFFICE
144	BL.	3'-0" X 8'-0" X 1'-0"	A	SOLID FRONT	SMALL GLASS	ALUM.	ALUM.	ALUM.	ALUM.		OFFICE
145	BL.	3'-0" X 8'-0" X 1'-0"	A	SOLID FRONT	SMALL GLASS	ALUM.	ALUM.	ALUM.	ALUM.		OFFICE
146	BL.	3'-0" X 8'-0" X 1'-0"	A	SOLID FRONT	SMALL GLASS	ALUM.	ALUM.	ALUM.	ALUM.		OFFICE
147	BL.	3'-0" X 8'-0" X 1'-0"	A	SOLID FRONT	SMALL GLASS	ALUM.	ALUM.	ALUM.	ALUM.		OFFICE
148	BL.	3'-0" X 8'-0" X 1'-0"	A	SOLID FRONT	SMALL GLASS	ALUM.	ALUM.	ALUM.	ALUM.		OFFICE
149	BL.	3'-0" X 8'-0" X 1'-0"	A	SOLID FRONT	SMALL GLASS	ALUM.	ALUM.	ALUM.	ALUM.		OFFICE
150	BL.	3'-0" X 8'-0" X 1'-0"	A	SOLID FRONT	SMALL GLASS	ALUM.	ALUM.	ALUM.	ALUM.		OFFICE
151	BL.	3'-0" X 8'-0" X 1'-0"	A	SOLID FRONT	SMALL GLASS	ALUM.	ALUM.	ALUM.	ALUM.		OFFICE
152	BL.	3'-0" X 8'-0" X 1'-0"	A	SOLID FRONT	SMALL GLASS	ALUM.	ALUM.	ALUM.	ALUM.		OFFICE
153	BL.	3'-0" X 8'-0" X 1'-0"	A	SOLID FRONT	SMALL GLASS	ALUM.	ALUM.	ALUM.	ALUM.		OFFICE
154	BL.	3'-0" X 8'-0" X 1'-0"	A	SOLID FRONT	SMALL GLASS	ALUM.	ALUM.	ALUM.	ALUM.		OFFICE
155	BL.	3'-0" X 8'-0" X 1'-0"	A	SOLID FRONT	SMALL GLASS	ALUM.	ALUM.	ALUM.	ALUM.		OFFICE
156	BL.	3'-0" X 8'-0" X 1'-0"	A	SOLID FRONT	SMALL GLASS	ALUM.	ALUM.	ALUM.	ALUM.		OFFICE
157	BL.	3'-0" X 8'-0" X 1'-0"	A	SOLID FRONT	SMALL GLASS	ALUM.	ALUM.	ALUM.	ALUM.		OFFICE
158	BL.	3'-0" X 8'-0" X 1'-0"	A	SOLID FRONT	SMALL GLASS	ALUM.	ALUM.	ALUM.	ALUM.		OFFICE
159	BL.	3'-0" X 8'-0" X 1'-0"	A	SOLID FRONT	SMALL GLASS	ALUM.	ALUM.	ALUM.	ALUM.		OFFICE
160	BL.	3'-0" X 8'-0" X 1'-0"	A	SOLID FRONT	SMALL GLASS	ALUM.	ALUM.	ALUM.	ALUM.		OFFICE
161	BL.	3'-0" X 8'-0" X 1'-0"	A	SOLID FRONT	SMALL GLASS	ALUM.	ALUM.	ALUM.	ALUM.		OFFICE
162	BL.	3'-0" X 8'-0" X 1'-0"	A	SOLID FRONT	SMALL GLASS	ALUM.	ALUM.	ALUM.	ALUM.		OFFICE
163	BL.	3'-0" X 8'-0" X 1'-0"	A	SOLID FRONT	SMALL GLASS	ALUM.	ALUM.	ALUM.	ALUM.		OFFICE
164	BL.	3'-0" X 8'-0" X 1'-0"	A	SOLID FRONT	SMALL GLASS	ALUM.	ALUM.	ALUM.	ALUM.		OFFICE
165	BL.	3'-0" X 8'-0" X 1'-0"	A	SOLID FRONT	SMALL GLASS	ALUM.	ALUM.	ALUM.	ALUM.		OFFICE
166	BL.	3'-0" X 8'-0" X 1'-0"	A	SOLID FRONT	SMALL GLASS	ALUM.	ALUM.	ALUM.	ALUM.		OFFICE
167	BL.	3'-0" X 8'-0" X 1'-0"	A	SOLID FRONT	SMALL GLASS	ALUM.	ALUM.	ALUM.	ALUM.		OFFICE
168	BL.	3'-0" X 8'-0" X 1'-0"	A	SOLID FRONT	SMALL GLASS	ALUM.	ALUM.	ALUM.	ALUM.		OFFICE
169	BL.	3'-0" X 8'-0" X 1'-0"	A	SOLID FRONT	SMALL GLASS	ALUM.	ALUM.	ALUM.	ALUM.		OFFICE
170	BL.	3'-0" X 8'-0" X 1'-0"	A	SOLID FRONT	SMALL GLASS	ALUM.	ALUM.	ALUM.	ALUM.		OFFICE
171	BL.	3'-0" X 8'-0" X 1'-0"	A	SOLID FRONT	SMALL GLASS	ALUM.	ALUM.	ALUM.	ALUM.		OFFICE
172	BL.	3'-0" X 8'-0" X 1'-0"	A	SOLID FRONT	SMALL GLASS	ALUM.	ALUM.	ALUM.	ALUM.		OFFICE
173	BL.	3'-0" X 8'-0" X 1'-0"	A	SOLID FRONT	SMALL GLASS	ALUM.	ALUM.	ALUM.	ALUM.		OFFICE
174	BL.	3'-0" X 8'-0" X 1'-0"	A	SOLID FRONT	SMALL GLASS	ALUM.	ALUM.	ALUM.	ALUM.		OFFICE
175	BL.	3'-0" X 8'-0" X 1'-0"	A	SOLID FRONT	SMALL GLASS	ALUM.	ALUM.	ALUM.	ALUM.		OFFICE
176	BL.	3'-0" X 8'-0" X 1'-0"	A	SOLID FRONT	SMALL GLASS	ALUM.	ALUM.	ALUM.	ALUM.		OFFICE
177	BL.	3'-0" X 8'-0" X 1'-0"	A	SOLID FRONT	SMALL GLASS	ALUM.	ALUM.	ALUM.	ALUM.		OFFICE
178	BL.	3'-0" X 8'-0" X 1'-0"	A	SOLID FRONT	SMALL GLASS	ALUM.	ALUM.	ALUM.	ALUM.		OFFICE
179	BL.	3'-0" X 8'-0" X 1'-0"	A	SOLID FRONT	SMALL GLASS	ALUM.	ALUM.	ALUM.	ALUM.		OFFICE
180	BL.	3'-0" X 8'-0" X 1'-0"	A	SOLID FRONT	SMALL GLASS	ALUM.	ALUM.	ALUM.	ALUM.		OFFICE
181	BL.	3'-0" X 8'-0" X 1'-0"	A	SOLID FRONT	SMALL GLASS	ALUM.	ALUM.	ALUM.	ALUM.		OFFICE
182	BL.	3'-0" X 8'-0" X 1'-0"	A	SOLID FRONT	SMALL GLASS	ALUM.	ALUM.	ALUM.	ALUM.		OFFICE
183	BL.	3'-0" X 8'-0" X 1'-0"	A	SOLID FRONT	SMALL GLASS	ALUM.	ALUM.	ALUM.	ALUM.		OFFICE
184	BL.	3'-0" X 8'-0" X 1'-0"	A	SOLID FRONT	SMALL GLASS	ALUM.	ALUM.	ALUM.	ALUM.		OFFICE
185	BL.	3'-0" X 8'-0" X 1'-0"	A	SOLID FRONT	SMALL GLASS	ALUM.	ALUM.	ALUM.	ALUM.		OFFICE
186	BL.	3'-0" X 8'-0" X 1'-0"	A	SOLID FRONT	SMALL GLASS	ALUM.	ALUM.	ALUM.	ALUM.		OFFICE
187	BL.	3'-0" X 8'-0" X 1'-0"	A	SOLID FRONT	SMALL GLASS	ALUM.	ALUM.	ALUM.	ALUM.		OFFICE
188	BL.	3'-0" X 8'-0" X 1'-0"	A	SOLID FRONT	SMALL GLASS	ALUM.	ALUM.	ALUM.	ALUM.		OFFICE
189	BL.	3'-0" X 8'-0" X 1'-0"	A	SOLID FRONT	SMALL GLASS	ALUM.	ALUM.	ALUM.	ALUM.		OFFICE
190	BL.	3'-0" X 8'-0" X 1'-0"	A	SOLID FRONT	SMALL GLASS	ALUM.	ALUM.	ALUM.	ALUM.		OFFICE
191	BL.	3'-0" X 8'-0" X 1'-0"	A	SOLID FRONT	SMALL GLASS	ALUM.	ALUM.	ALUM.	ALUM.		OFFICE



RCP LEGEND

	ACE GRID
	CEILING LIGHT
	CEILING FAN
	CEILING SPEAKER

RCP NOTE:

1. ARCHITECTURAL REFERS TO COUNTY SPECIFICATIONS ONLY. REFINISHES REFLECTED, UNLESS SPECIFIED OTHERWISE. IN THE CASE OF ANY CONFLICT, REFINISHES ARE TO BE DEFERRED TO LOCAL, STATE AND FEDERAL.

NOT FOR CONSTRUCTION

DATE STUDY: 06/2024
 DATE REVISED: 06/2024

RESIDENTIAL FACILITY ADDITION
 VOLUNTERS OF AMERICA - TEXAS
 200 AL WHITEGREEN RD,
 HUTCHINS, TX 75451

Progress set:

ICEWIRE ARCHITECTS, LLC
 ARCHITECTS
 10000 W. 16TH AVENUE, SUITE 2000, DALLAS, TX 75248-1057
 (972) 248-2086 FAX: (972) 248-1057

A6

JOB NO: 24-044

