

DATE DATE:  
M. A. 2014

REVISIONS:


**HUTCHINS ANIMAL SHELTER**  
PROJECT NO. 14-000000

**RON HOBBS ARCHITECTURE & INTERIOR DESIGN, LLP**  
PHASE 2 DEMOLITION

114 WEST MAIN STREET, SUITE 200, CARLETON, TEXAS 75006

NOT FOR REGULATORY APPROVAL, PERMITTING, OR CONSTRUCTION

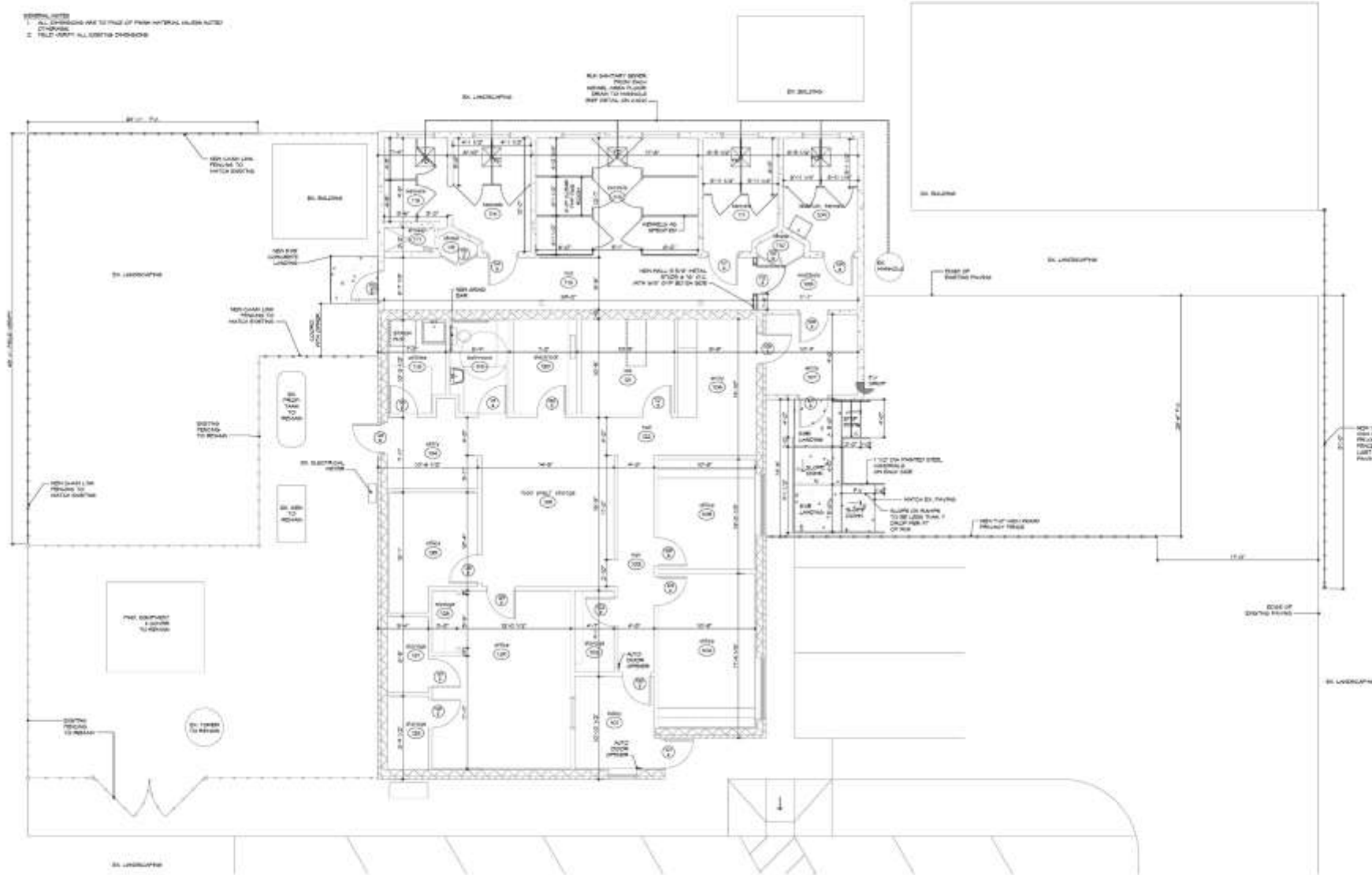
JOB NUMBER  
**2420**

SHEET NUMBER  
DEMOLITION PLAN  
**D101**

- DEMOLITION LIST**
1. REMOVE TO APPROXIMATE GRADE OR BELOW - DEMOLITION.
  2. DEMOLITION OPERATIONS ARE TO BE CONDUCTED FROM MONDAY THROUGH FRIDAY AND ARE NOT INTENDED TO BEHAVE AS A COMPLETE SHUT DOWN FOR THE DEMOLITION WORK. THE OPERATIONS DO NOT ATTEMPT TO DISCLOSE IN DETAIL THE FULL SCOPE OF THE DEMOLITION WORK REQUIRED.
  3. THE CONTRACTOR SHALL BE RESPONSIBLE FOR OBTAINING THE NECESSARY PERMITS AND SURETIES AND SHALL BE RESPONSIBLE FOR OBTAINING THE NECESSARY PERMITS AND SURETIES AS REQUIRED TO CONDUCT THE DEMOLITION WORK.
  4. DEMOLITION WORK SHALL INCLUDE, BUT NOT BE LIMITED TO THE FOLLOWING:
    - A. REMOVE ALL EXISTING PLUMBING FIXTURES AND FITTINGS NOT SPECIFIED TO BE REMOVED.
    - B. CAP DISCONNECTED PLUMBING UNDER A CONDITION OF A SECURITY FENCED TOWER BEHIND.
    - C. REMOVE EXISTING PLUMBING FIXTURES HAVE BEEN REMOVED CAP AND SEAL FACTS, LINES, SEWER LINES, AND OTHER FITTINGS NOT SPECIFIED TO REMAIN.
    - D. REMOVE ALL EXISTING MECHANICAL PLUMBING JOINTS, AS TO BE REMOVED OR REPAIRING PLUMBING JOINTS AND PLUMBING SYSTEMS HAVE BEEN REMOVED. PLUMBING ALIAS WILL BE RESPONSIBLE TO VERIFY THE REMOVAL OF ALL PLUMBING.
    - E. REMOVE ALL EXISTING WALLS, AS SHOWN.
    - F. REMOVE ALL EXISTING DOORS AND WINDOWS EXCEPT AS SPECIFIED TO REMAIN.
    - G. REMOVE ALL EXISTING ROOF STRUCTURE AND FOUNDATION TO REMAIN AS SPECIFIED TO REMAIN.
    - H. REMOVE ALL EXISTING AND ALL ELECTRICAL EQUIPMENT AS SPECIFIED TO REMAIN WITHIN THE LIMITED TO APPROXIMATE ORIGINAL LOCATION. EXISTING EXPOSED WIRING, CABLES, AND SERVICES, THIS INCLUDES INTERIOR & EXTERIOR EXPOSED EQUIPMENT.
    - I. REMOVE ALL EXISTING WALLS, PLUMBING FIXTURES, DOORS, WINDOWS, ETC. TO BE REMOVED.
    - J. REMOVE ALL



- REVISIONS**
1. ALL DIMENSIONS ARE TO FACE OF PAIR UNLESS OTHERWISE NOTED
  2. REVISIONS
  3. REVISIONS
  4. REVISIONS
  5. REVISIONS
  6. REVISIONS
  7. REVISIONS
  8. REVISIONS
  9. REVISIONS
  10. REVISIONS



**DATE DATE:**  
M. A. 2014

**REVISIONS:**


**HUTCHINS ANIMAL SHELTER**  
 ARCHITECTURE BY  
**RON HOBBS ARCHITECTURE & INTERIOR DESIGN, LLP**  
 614 WEST MAIN STREET, SUITE 200, CARROLLTON, TEXAS 75006

NOT FOR REGULATORY APPROVAL, PERMITTING, OR CONSTRUCTION

JOB NUMBER  
**2420**

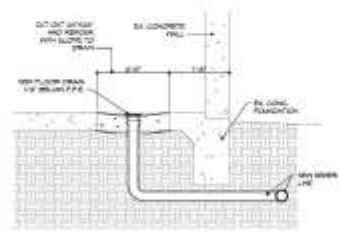
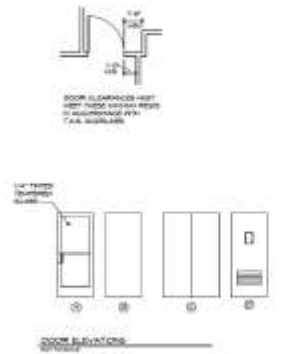
SHEET NUMBER  
FLOOR PLAN  
**A101**

ROOM FINISH SCHEDULE										
R/S	R/S	R/S	R/S	R/S	WALL				FLOOR	CEILING
					WALL	WALL	WALL	WALL		
01	CEILING	04	00	01	04070A	04-P	04-P	04-P	04-PP05B	1
02	STORAGE	04	04	04	04070A	04-P	04-P	04-P	04-P	1
03	HALL	04	04	04	04070A	-	04-P	04-P	04-P	1
04	OFFICE	04	00	04	04070A	04	04	04	04	2
05	OFFICE	04	00	04	04070A	04	04	04	04	2
06	ENTRY	04	00	04	04070A	04-P	04-P	04-P	04-P	1
07	ENTRY	04	00	04-P	04070A	04-P	04-P	04-P	04-P	1
08	HALLWAY	04070A	04	04-P	04070A	04-P	04-P	04-P	04-P	1
09	RECEPTION KENNEL	04070A	04	04-P	04070A	04-P	04-P	04-P	04-P	1
10	SHED	04070A	04	04-P	04070A	04-P	04-P	04-P	04-P	1
11	KENNEL	04070A	04	04-P	04070A	04-P	04-P	04-P	04-P	1
12	HALL	04070A	04	04-P	04070A	04-P	04-P	04-P	04-P	1
13	KENNEL	04070A	04	04-P	04070A	04-P	04-P	-	04-P	1
14	KENNEL	04070A	04	04-P	04070A	04-P	04-P	04-P	04-P	1
15	SHED	04070A	04	04-P	04070A	04-P	04-P	04-P	04-P	1
16	KENNEL	04070A	04	04-P	04070A	04-P	04-P	04-P	04-P	1
17	SHED	04070A	04	04-P	04070A	04-P	04-P	04-P	04-P	1
18	YOUTH	04070A	04070A	04-P	04070A	04-P	04-070A	04-PP05B	04-070A	1
19	RECEPTION	04070A	04070A	04-P	04070A	04-P	04-P	04-PP05B	04-070A	1
20	SLIP PAD	04	00	04	04070A	04	04	04	04	2
21	LAB	04	00	04	04070A	04-P	04-P	04-P	04-P	1
22	HALL	04	04	04	04070A	04-P	-	04-P	-	1
23	ENTRY	04	04	04	04070A	04-P	04-P	04-P	04-P	1
24	OFFICE	04	04	04	04070A	04	04	04	04	3
25	STORAGE	04	04	04-P	04070A	04-P	-	04-P	04-P	1
26	STORAGE	04	04	04	04070A	04-P	04-P	04-P	04-P	1
27	OFFICE	04	00	04	04070A	04-P	04-P	04-P	04-P	1

SYMBOLS: 04070A - 8' x 8' CONCRETE / BRICK FINISH  
 04 - 8' x 8' CONCRETE TO FINISH  
 04-P - 8' x 8' CONCRETE PAINT  
 04-PP05B - 8' x 8' CONCRETE PAINT  
 04-070A - 8' x 8' CONCRETE PAINT  
 04 - 8' x 8' CONCRETE  
 04 - 8' x 8' CONCRETE

SYMBOLS: 1 - ALL SURFACES (EXCEPT CEILING AND FLOOR) SHALL BE FINISHED TO BE APPROVED BY THE ARCHITECT  
 2 - FINISH PARTS OF DOOR SHALL BE APPROVED BY THE ARCHITECT  
 3 - EXTERIOR SURFACES SHALL BE APPROVED BY THE ARCHITECT  
 4 - 04

DOOR SCHEDULE																	
R/S	R/S	R/S	R/S	R/S	R/S	R/S	R/S	R/S	R/S	R/S	R/S	R/S	R/S	R/S	R/S	R/S	R/S
074	04-P	04	04	04	04	04	04	04	04	04	04	04	04	04	04	04	04
075	04-P	04	04	04	04	04	04	04	04	04	04	04	04	04	04	04	04
076	04-P	04	04	04	04	04	04	04	04	04	04	04	04	04	04	04	04
077	04-P	04	04	04	04	04	04	04	04	04	04	04	04	04	04	04	04
078	04-P	04	04	04	04	04	04	04	04	04	04	04	04	04	04	04	04
079	04-P	04	04	04	04	04	04	04	04	04	04	04	04	04	04	04	04
080	04-P	04	04	04	04	04	04	04	04	04	04	04	04	04	04	04	04
081	04-P	04	04	04	04	04	04	04	04	04	04	04	04	04	04	04	04
082	04-P	04	04	04	04	04	04	04	04	04	04	04	04	04	04	04	04
083	04-P	04	04	04	04	04	04	04	04	04	04	04	04	04	04	04	04
084	04-P	04	04	04	04	04	04	04	04	04	04	04	04	04	04	04	04
085	04-P	04	04	04	04	04	04	04	04	04	04	04	04	04	04	04	04
086	04-P	04	04	04	04	04	04	04	04	04	04	04	04	04	04	04	04
087	04-P	04	04	04	04	04	04	04	04	04	04	04	04	04	04	04	04
088	04-P	04	04	04	04	04	04	04	04	04	04	04	04	04	04	04	04
089	04-P	04	04	04	04	04	04	04	04	04	04	04	04	04	04	04	04
090	04-P	04	04	04	04	04	04	04	04	04	04	04	04	04	04	04	04
091	04-P	04	04	04	04	04	04	04	04	04	04	04	04	04	04	04	04
092	04-P	04	04	04	04	04	04	04	04	04	04	04	04	04	04	04	04
093	04-P	04	04	04	04	04	04	04	04	04	04	04	04	04	04	04	04
094	04-P	04	04	04	04	04	04	04	04	04	04	04	04	04	04	04	04
095	04-P	04	04	04	04	04	04	04	04	04	04	04	04	04	04	04	04
096	04-P	04	04	04	04	04	04	04	04	04	04	04	04	04	04	04	04
097	04-P	04	04	04	04	04	04	04	04	04	04	04	04	04	04	04	04
098	04-P	04	04	04	04	04	04	04	04	04	04	04	04	04	04	04	04
099	04-P	04	04	04	04	04	04	04	04	04	04	04	04	04	04	04	04
100	04-P	04	04	04	04	04	04	04	04	04	04	04	04	04	04	04	04



FLOOR DRAIN DETAIL

DATE: 11.15.2011  
 REVISIONS:  
 \_\_\_\_\_  
 \_\_\_\_\_  
 \_\_\_\_\_

**HUTCHINS ANIMAL SHELTER**  
INTERIOR  
**RON HOBBS ARCHITECTURE & INTERIOR DESIGN, LLP**  
PHOTO: EDWARDS  
614 WEST MAIN STREET, SUITE 200, CARANO, TEXAS 75620

NOT FOR REGULATORY APPROVAL, PERMITS, OR CONSTRUCTION

JOB NUMBER  
**2420**

WELL NUMBER  
 SHEET NOTES  
**A102**