

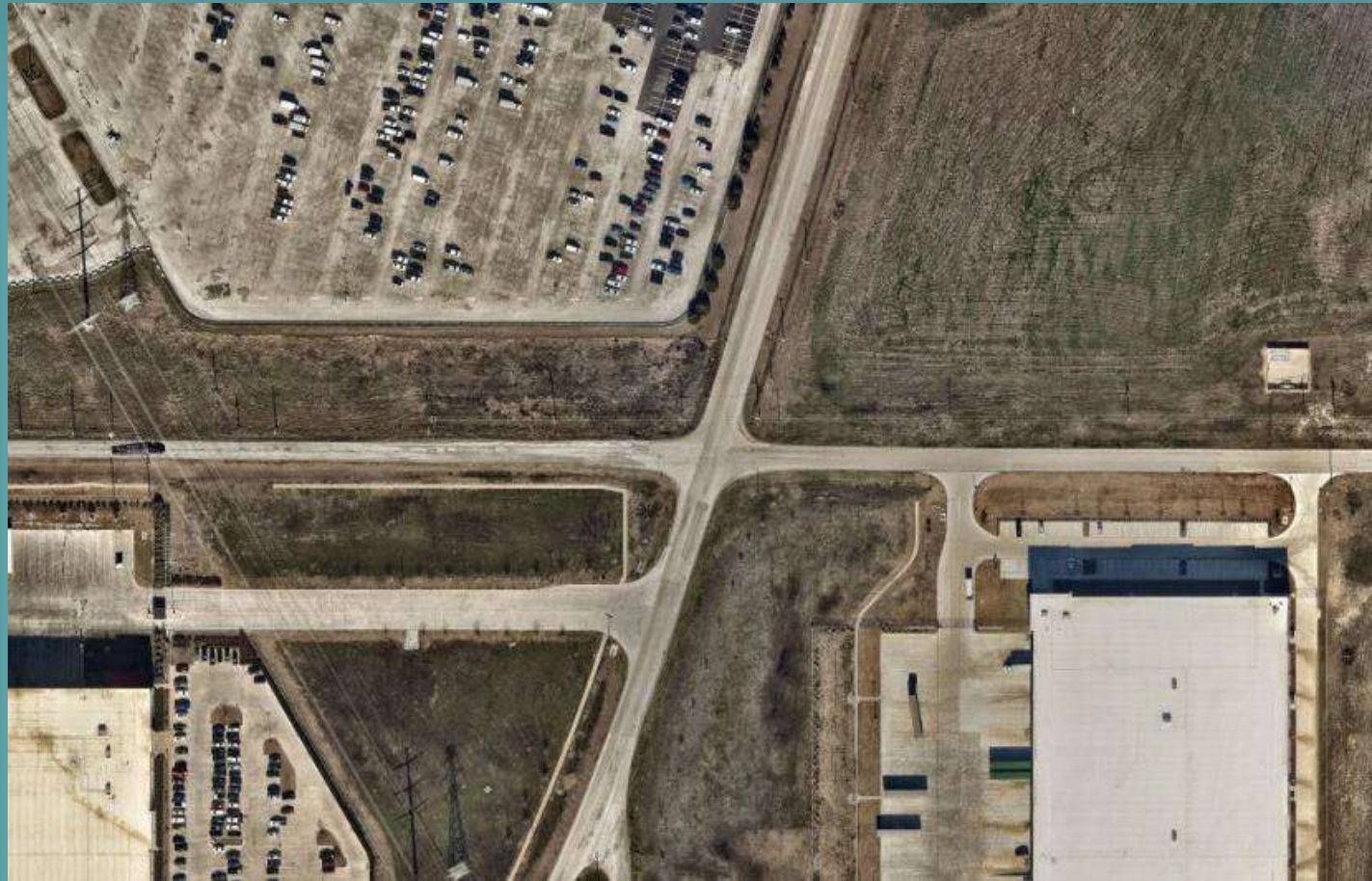
Traffic Control Analysis W. Wintergreen Rd & Lancaster Hutchins Rd

Mamun Yusuf, PE, Director of Public Works



Study Background

- Intersection: Two-way stop control (Wintergreen stops, Lancaster Hutchins free flow)
- Speed limits vary: 35 mph south, 50 mph north, then reduced to 40 mph
- Site issues observed:
 - – Curved approach (sight limitations)
 - – Overgrown vegetation blocking view
 - – Speeding due to sign placement



Traffic & Safety Data

- Traffic counts collected: Jan 2025
- Future traffic: Southaven Residential + New City Hall/Recreation Center
- Annual growth rate assumed: 5%
- Crash history (2024): 12 crashes
 - – 6 due to failure to yield at stop sign

Traffic Signal Warrant Analysis

- Evaluated per TMUTCD (Texas Manual on Uniform Traffic Control Devices)
- Result: Traffic signal NOT warranted
- Warrants checked:
 - – Eight-hour volume: Not met
 - – Four-hour volume: Not met
 - – Crash experience: Not met

All-Way Stop Control

- Meets criteria:
 - – >5 crashes in 12 months (correctable by AWSC)
 - – Traffic volume thresholds satisfied
- Recommendation: Convert to All-Way Stop Control (AWSC)
- Additional safety:
 - – Install Stop Ahead signs on Lancaster Hutchins Rd
 - – Add flags on stop signs to highlight change

Speed Limit Review

- Current: 35 mph (south), 50 mph (north), then 40 mph further north
- Observed 85th percentile speed: 59 mph (above posted)
- Recommendation: Reduce speed north of intersection from 50 → 45 mph
- Reevaluate once developments are complete (may justify 40 mph)

Next Steps

- Implement All-Way Stop Control at intersection
- Install Stop Ahead signage and flags
- Adjust speed limit to 45 mph north of intersection
- Reassess after Wintergreen Road widening (anticipated 2027)