



ART CONSULTANT SERVICES PROPOSAL FOR

City of Hutchins :: City Hall

PREPARED BY

Erin Doherty | Senior Art Advisor | erin@turningart.com

Aubrey Thorp | Director of Enterprise | aubrey@turningart.com

An architectural rendering of a modern event center. The building features a prominent glass facade on the left side, revealing an interior space with people and tables. The main structure is composed of light green panels. A large, colorful mosaic mural is visible on the right side of the building, with the words "EVENT CENTER" in yellow text. Several tall, white, cylindrical columns support the roof structure. The sky is blue with light clouds. The title "Project Plan" is overlaid in the center in a large, black, italicized serif font.

Project Plan



PROJECT OVERVIEW :: CITY OF HUTCHINS CITY HALL



TurningArt is thrilled to continue our partnership with the City of Hutchins as we expand their public art collection through the interior artwork scope of the new City Hall. As the city's first project of this kind, the integrated public artworks — both interior and exterior — are designed to establish City Hall as a civic landmark and cultural destination. Building on the momentum of the exterior artworks, which includes locally designed and crafted mosaics and a monumental sculpture, **we aim to ensure that interior installations echo and elevate the vision already set in motion.**

We remain committed to working in close collaboration with the architect, design and construction teams, and key stakeholders to bring the city's rebrand to life. This proposal outlines our preliminary plan for the interior artwork program, featuring curated artist highlights, a clear project roadmap, and turnkey pricing. As both creative leaders and project managers, TurningArt will guide the process from concept through installation — delivering thoughtful, high-impact artwork on time and on budget.

GOAL

Expand City Hall's 'first of it's kind' artwork collection by outfitting the interior priority spaces with dynamic and varied local artworks. **The collection will speak to the City's history, while celebrating the future.**

VISION

Celebrate | Welcome | Gather | Connect | Inspire | Immerse

KEY AESTHETICS

TBD



CONFIGURATION A :: COMPLETE

This configuration is recommended, alternates available upon request

Style & Size Key

- 52"x70" CF [0]
- 45"x60" CF [0]
- 36"x48" CF [0]
- 30"x40" CF [2]
- 30"x40" P [0]
- 26"x32" P [0]
- 18"x22" P [0]
- Originals & Commissions [2]



Gallery Wrap Canvas (CF)



Framed Paper Giclée (P)



2D Original/Commission



3D Original/Commission





Artwork Scope

SIZE & STYLE

18"x22" P

Config. A
Complete

0

26"x32" P

0

30"x40" P

0

30"x40" CF

2

36"x48" CF

0

30"x60" CF

0

45"x60" CF

0

52"x70" CF

0

Originals

(Varying Sizes & Media; TBD)

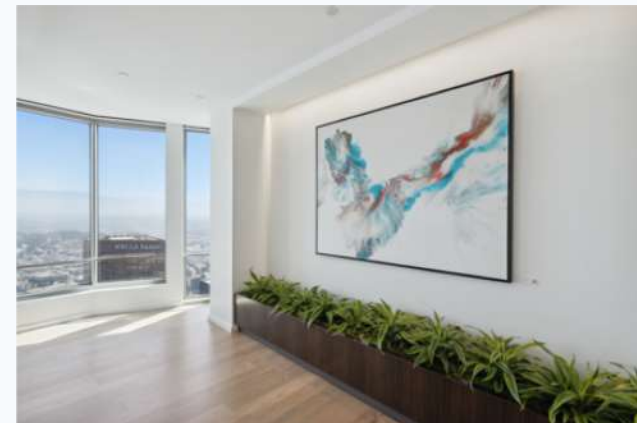
2

Total across size & style

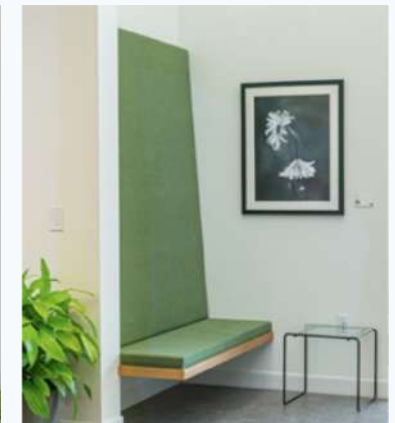
4



Originals & Commissions



Gallery Wrapped Canvas



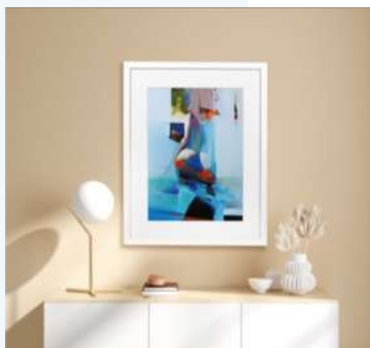
Paper Giclée



Fine Art Prints

Paper Giclée

Our giclée paper prints are produced on a proprietary material carefully selected for its ability to display vibrant colors and capture subtle detail.



✓ *Gallery Wrap Canvas*

Our giclée canvas prints are vibrant and high-definition, printed with archival inks on premium canvas, which provide each piece its texture and depth.



✓ *Fine Art Framing*

Handmade from natural, recycled material, our frames beautifully complement any piece of art. Available in black, silver, maple, walnut, white, and gold.



Sublimated Metal

Our metal prints are extremely durable and 1/16" thick. Dye sublimated, heat pressed printing makes for exceptional clarity and detail.



Acrylic

Our acrylic prints give the artwork depth and striking color, creating a more modern aesthetic. They are very durable with a 1/4" thickness.



Sublimated Wood

Our wood prints bring a rustic, down-to-earth feel to the artwork, as the natural wood grains show through both colors and transparent parts of the image.



Originals & Commissions

✓ Original Artwork

Drawing from a network of over 3,000+ artists, your dedicated art advisor will work with you and the selected artist(s) to craft something one of a kind for your statement areas. Media options include but are not limited to painting, sculpture, wood, acrylic, metal, and found object.

Vinyl Graphic

TurningArt offers vinyl graphics, either cut or full wall applications for a variety of surfaces including drywall, glass, magnetic metals, and exterior treatments. Certified LEED options available.

✓ Site-Specific Commissions

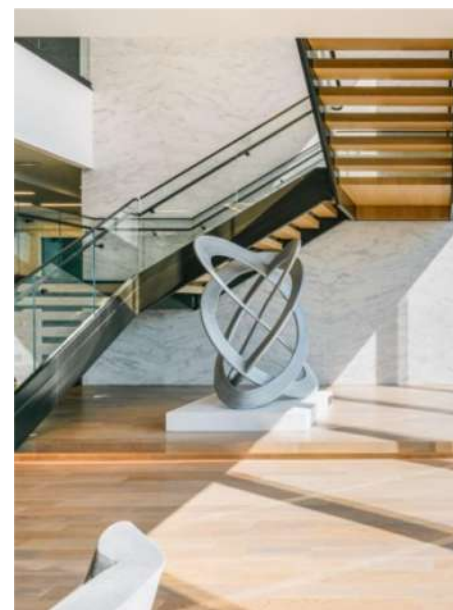
Drawing from a network of over 3,500+ artists, your dedicated art advisor will work with you and the selected artist(s) to craft something one of a kind for your statement areas. Media options include but are not limited to painting, sculpture, wood, acrylic, metal, and found object.

Hand-Painted Mural

Custom designed by the artist or artists of the client's choosing. Using non-toxic paint and any other necessary materials dependent upon the installation site, murals can be completed on building interiors and exteriors. Priced based on square footage, design detail, and artist experience.

Digital Art

In partnership with Touchsource, TurningArt can offer world class hardware, software, and content subscriptions on touch or touchless screen displays for still and animated digital artworks.





Framed Paper Giclée

Our fine art giclée prints are produced on archival paper with a matte finish, carefully selected for its ability to display vibrant colors and capture subtle detail.

Our minimalist frames are made of a natural, recycled material. Each frame comes with a custom 4 ply, smooth solid white core mat and premium shatterproof acrylic cover.



Sizes

- 18"x22"
- 26"x32"
- 31"x41"

Frame Colors

- Black
- Maple
- Gold
- White
- Walnut
- Silver



Gallery Wrap Canvas

Our feature fine art cotton blend canvases are gallery-wrapped and hand stretched on 1.5" stretcher bars. There is an option to add a minimalist hardwood floater frame (3/8" face, 2" profile, 1/4" gap) in a variety of finish options.

Sizes

- 18"x24"
- 24"x32"
- 30"x40"
- 36"x48"
- 45"x60"
- 52"x70"

Frame Colors

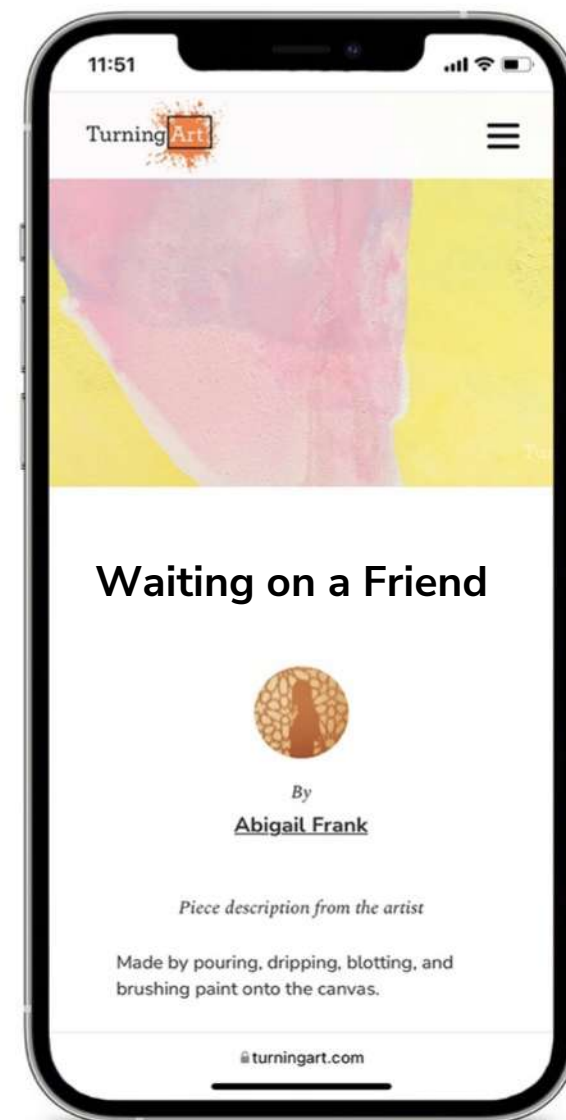
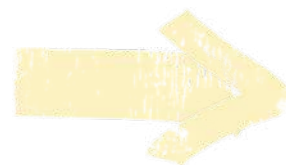
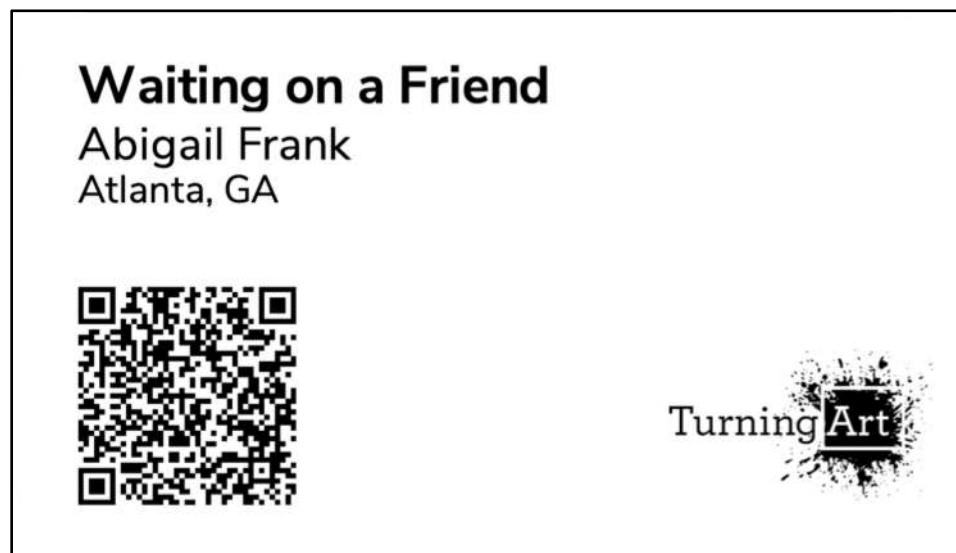
- Black
- Silver
- Maple
- Walnut
- White
- Gold





Tech-Enabled Placards

Every piece in your collection comes with a tech-enabled 3.5"x2" mat board placard for display via command strip for easy removal. Each placard includes a QR code that navigates to the artist's piece page. This way, all viewers can learn more about the art and the artist, with options to support and share.



Placards are always optional.

Customizations are available upon request and subject to additional fees.

A modern office interior featuring glass partitions, blue seating, and a large abstract painting. The space is bright and open, with a curved ceiling and a large white pillar. The text "Art & Design" is overlaid in a large, bold, black serif font.

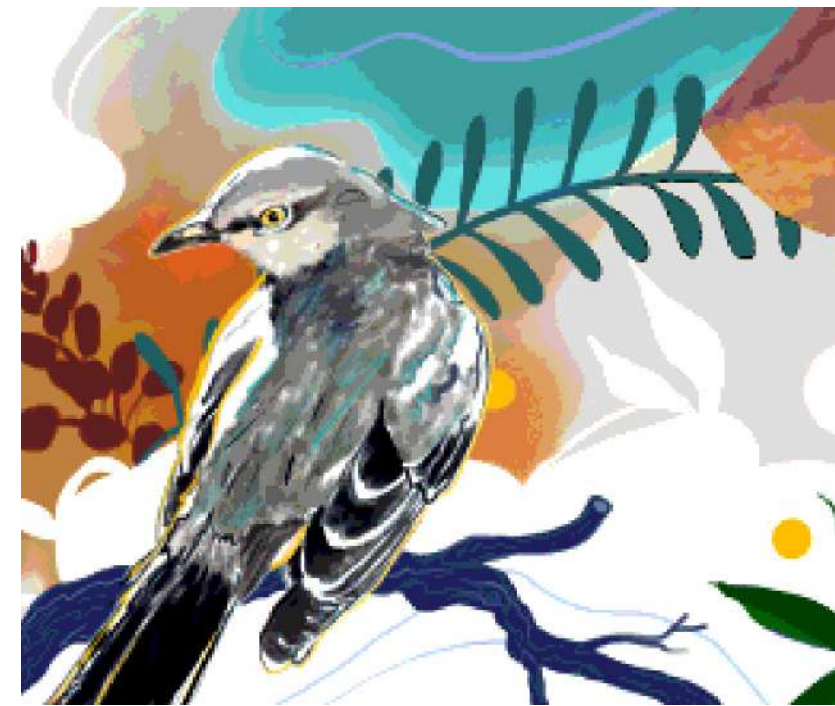
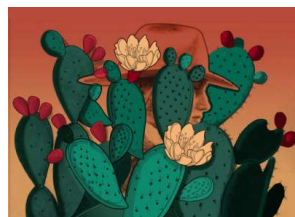
Art & Design

All Original Artists & Artworks Pending Availability

Confidential & Proprietary Information



ART & DESIGN INSPIRATION :: THE FUTURE OF HUTCHINS



Clean – Modern – Bright - Welcoming

Confidential & Proprietary Information



MOOD BOARD :: LOCAL ORIGINALS & COMMISSIONS INSPIRATION



Dimensional – Bright – Textured – Intriguing – Engaging



Daniela *Pasqualini*

Based in Dallas, Daniela Pasqualini is an experienced Italian painter whose abstract artwork have been exhibited internationally and are held in private collections worldwide. Since she was a child, Pasqualini has been expressing herself through drawing and sketching, developing a passion for the arts. **By breaking down elements of flora and fauna**, she transforms her observations of nature onto the canvas, **bringing rhythm to splashes of vibrant color and creating texture through form.**

“My paintings convey years of travel seeking stories of all kind; experiences involving nature, places, people and sounds that are woven into the relationship with vibrant colors, texture and lines...”





Ray *Beldner*

Ray Beldner's **collage works** are made from **images of historic artworks mined from books, auction catalogs, and magazines**. He is drawn to the shapes, colors, and textures in other artist's work, which he then deconstructs to create wholly new forms and narratives. Beldner's artwork has been exhibited both nationally and internationally and can be found in many public and private collections including the Smithsonian National Portrait Gallery and the Federal Reserve Board, Washington D.C., the Fine Arts Museums of San Francisco, Oakland Museum of California, the San Jose Museum of Art, the diRosa Preserve in Napa, California, among others.





Sonja Quintero

Sonja Quintero is a fine art photographer living and working in Dallas, Texas. She began teaching herself the discipline, the old-fashioned way, with black and white film and a fixed 50mm lens. Today, she is a full time photographer and is well versed in both the film and digital realms of the medium.

Influenced deeply by her background in design and architecture, **Sonja's primary artistic focus has been on documenting the scenes of everyday city life.** Inspiration finds her among the sights of shady street corners, neon lights and towering buildings. **She loves to capture those little details that often go overlooked.** Through her photographs she strives to show the viewer the allure and vibrancy of our urban worlds. To her, "there is balance, beauty and thoughtful design to be found in every nook and cranny". Her photographs reflect a unique vision that celebrates the expression of individuality. Sharing this singular vision, is what drives her. Of her work, she says: **"I want my photos to connect to people on a very personal level, one that will enliven their days, excite their spirit and broadens their minds."**





Lucrecia Waggoner

Lucrecia Waggoner is constantly **reaching for growth in every facet of life**. She believes personal growth fuels artistic enrichment. This belief forms the foundation of Waggoner's artwork, which is visually represented in the multi-layered pieces she creates. At their core, her works reflect a symbiotic relationship with nature and her life journey. **Waggoner's cornerstone of growth and expression is seen in blossoming flowers and woven tulips**. Although her work is both abstract and representational, **she aspires for viewers to experience a sense of organic serenity**. Considered a minimalist, Waggoner also strives to convey deep expression—an extension of her passionate personality and rich cultural background.





Melissa Borrell

Austin-based artist Melissa Borrell creates **kinetic, architectural sculptures and immersive environments that surprise and delight while striving to inspire participants to see the world in a new way.** Using light, shadow and movement, she creates artwork and spaces that encourage viewers slow down, wonder and smile. **Fascinated by math, geometry, nature, technology and architectural forms, Melissa's work is sophisticated yet playful.** With an engineering mind and a delicate aesthetic, Melissa combines materials and shapes in a unique way to create environments that illuminate the things that she finds awe-inspiring.





Erika *Huddleston*

Erika Huddleston's artwork **centers on the study of nature within urban environments**. She is particularly interested in how the perception of changing natural processes in urban park settings can influence human psychology. By spending long hours painting in "urban wilderness" areas of cities around the world, Huddleston is able to conduct extended onsite analysis and observation that goes beyond the scope of a brief site visit. **All of her works are created life-size and are drawn and painted from a seated position in the landscape, whether capturing the delicate form of a small flower or the expansive structure of large tree branches.**





Statement Commission



Ray
Beldner

Welcome the community to City Hall with a custom, statement installation that unites the exterior mosaics and sculpture through color, dynamic movement, and powerful storytelling. Ray Beldner's **collage works** are an exciting fit, as they are made from images of historic artworks mined from books, auction catalogs, and magazines. There's an exciting opportunity to commission him to pull from the City of Hutchin's history, transforming it into a modern installation that honors the past while celebrating the future.



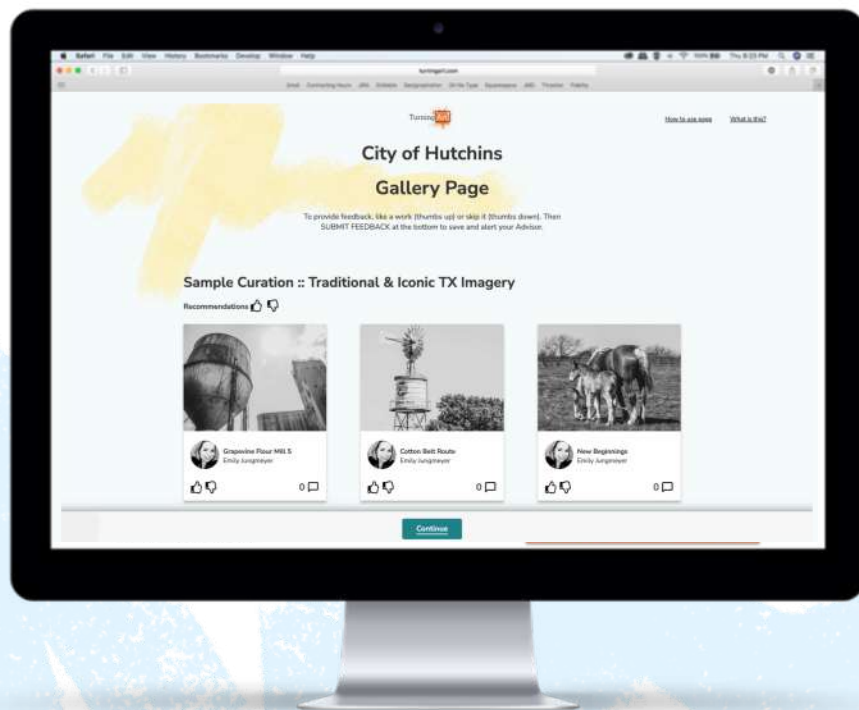
Existing Originals & Prints



**Erika
Huddleston**

Complement the organic and familiar scene at the entry of the event center with an inviting and colorful painting. Erika Huddleston's artwork centers on the study of nature within urban environments, and offers a lively take on local fauna. Through texture, abstraction, and representation of nature, the event center is an exciting opportunity to offset the familiar, historical photography throughout the rest of the space. The event center will be used by families, friends, professionals, and should have a universally inspiring, and playful feel which the art should mimic.

Supporting prints will be placed in the restroom corridor, complementing the palette and style seen in the entry.



The City of Hutchins' Interactive TurningArt Gallery

Click to preview and provide feedback:

<https://www.turningart.com/client-collection/g2xU-VUCtB3JfD3iezPh0w>

This preliminary gallery is meant to serve as a general style assessment as we get to know your preferences and is a great tool for aesthetic alignment across multiple voices. To submit your feedback, follow the simple steps below!:

1. Like it [thumbs up] or skip it [thumbs down] reactions
2. Enter any comments and your name at the bottom of the page
3. Click submit!

A background image showing a person's hands using a ruler and a compass to measure a detailed architectural drawing of a building. The drawing is on a light-colored surface, and the person is wearing a dark shirt. The text "Process & Timeline" is overlaid in the center in a bold, italicized font.

Process & Timeline



Your Team



Erin Doherty
SENIOR ART ADVISOR



TX Based!

Aubrey Thorp
SENIOR ART ADVISOR & PROJECT MANAGER

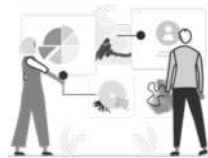
Supported by:



TA Artist Services



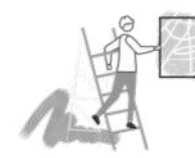
TA Custom Tech



TA Marketing



TA Leadership



TA Operations



Artist Network
3,000+ Artists, Muralists, Sculptors, Designers



Preliminary

Process Overview [2D/3D Wall Mounted Artwork & Installations]



Master Planning <i>May 2025 – June 2025</i>	Artist & Artwork Selection <i>June - July 2025</i>	Procurement & Installation <i>August 2025</i>
<ol style="list-style-type: none">1. Define art program goals, themes, and vision2. Finalize art scope & budget <u>Execute Service Agreement upon finalization of scope and project budget.</u>3. Identify & map engagement with key stakeholders, committees, and end users4. Establish design approvals process5. Timeline development	<ol style="list-style-type: none">1. TurningArt creates a detailed artist brief with project overview, existing exterior artwork activations and aesthetic direction to distribute amongst potential, local artists2. Engage local artist community & beyond through recruitment as needed3. <i>Engage Panel for approval on artist/artwork selection</i>4. Select artist/artwork; artist contract executed5. Work alongside architect & buildout team to align on installation needs.6. <i>*If custom commissions are desired; expect design development phase of approx. 4 weeks.</i>	<ol style="list-style-type: none">1. Logistics coordination for delivery and installation2. Installation and installation oversight of all artwork activations <p><i>*This timeline assumes purchase of existing, available artwork, and no Design Development/fabrication needed. There is possibility that some artists may be available and interested in creating a custom work within the timeline, TBD.</i></p>

Includes unlimited meetings and access to a dedicated Art Advisory team

THIS IS A PRELIMINARY OVERVIEW, A COMPREHENSIVE TIMELINE WILL BE DEVELOPED DURING PHASE 1, MASTER PLANNING

A close-up, slightly blurred photograph of a painter's palette. The palette is dark and covered with various colors of paint, including red, blue, yellow, and white. A hand wearing a black glove is visible, mixing the paint. The background is out of focus, showing more paint tubes and a person's arm.

Budget



Turnkey Services

- Project management & coordination with client team including Project Manager, Architect & Designers, etc. ✓
- Art configuration development & refinement ✓
- Artist recruitment & onboarding ✓
- Draft & management of Artist RFP ✓
- Informational collateral & support ✓
- Design & Curation management of all artwork ✓
- Procurement & fabrication coordination ✓
- Shipping & handling ✓
- Logistics coordination ✓
- Equipment & materials ✓
- Delivery & installation ✓
- Installation insurance ✓
- Tech-enabled placards ✓
- Professional site photography ✓
- Product Warranty *[Level of warranty dependent on selected artist/partner/material]. Should issues arise with or after installation, TurningArt will work with the project team to bring appropriate solutions to the table on a case-by-case basis.* ✓

PRICING SUMMARY

Config. A :: Complete

Turnkey Budget by Treatment	
Artwork Treatments	PURCHASE
[2+] 2D & 3D Originals <i>(Varying Sizes & Media; TBD)</i>	\$56,229
[2] Framed Fine Art Canvas Prints	\$3,771
Project TOTAL	\$60,000

PLEASE NOTE

Pricing is 100% Turnkey with the exception of Sales Tax (assuming tax exemption); All estimates are subject to change as scope evolves.

PROJECT TERMS

1. This agreement is subject to the terms and conditions of TurningArt's Master Service Agreement.
2. Fifty percent of the first-year total is due at signing. The remainder is due upon installation.
3. Curation, design, and installation coordination commence at signing.



PURCHASE SERVICE AGREEMENT

TURNINGART SERVICES AGREEMENT

This Services Agreement (the “Agreement”) is between TurningArt Inc., a Delaware Corporation (“TurningArt”) and the City of Hutchins (the “Client”) and is effective as of _____ (the “Effective Date”). Together, TurningArt and Client are the “Parties” and each is a “Party.”

1.Services

TurningArt shall provide to Client the services described below, including all deliverables set forth in this service agreement (collectively, in this service agreement, the “Services”) according to the specifications set forth herein, or as otherwise mutually agreed to by the Parties in writing. To the extent possible, TurningArt shall accommodate all reasonable requests by the Client for adjustments to the specifications and/or timing of the Services.

TurningArt, in conjunction with the Client, will source artwork and manage all details of the artwork program outlined herein.

The total budget for this project is sixty thousand dollars (\$60,000). This amount includes all associated fees and costs for the scope as outlined herein.

TurningArt will:

- Become familiar with the Client’s overall artwork aesthetic.
- Understand the needs of the Client’s various spaces through unlimited meetings.
- Provide a dedicated Art Advisor and support team.
- Seek experienced artists and designers to outfit all activation opportunities with quality artwork Products, through a collaborative curatorial recommendation process.
- Present artwork Product options to the Client and any designated committees for decision with unlimited access and meetings.
- Provide online voting tool access.
- Manage the proposal, design, production, delivery and installation processes.
- Work closely with the Client and with its architects, interior designers, and project managers to implement and oversee the installation of all Artwork Product as outlined herein.

The Client will:

- Maintain proper environment and reasonable care of artwork



2. Schedule of Services

TurningArt shall provide the Services according to the following schedule, which is subject to more detail as outlined in writing and mutually agreed by the Parties:

Kick off & Artist Recruitment	June 2025
Artist & Artwork Selection	July 2025
Procurement & Installation	August - September 2025

3. Compensation and Payment

A. As compensation for TurningArt’s Services and Product satisfactorily performed hereunder, the Client shall pay to TurningArt the fees set forth below. TurningArt shall invoice the Client according to the schedule below, or upon such other schedule as the Parties may agree in writing. Except as otherwise set forth herein, the Client shall pay to TurningArt all invoiced amounts within thirty (30) days of receipt of each invoice. Payment 3 will be adjusted to reflect the remaining amount of TurningArt’s fee as Services and Product evolve as the Parties may agree in writing. If the installation of the artwork program is to be completed in segments greater than thirty (30) days apart, TurningArt reserves the right to invoice for the portions of the collection that have been installed.

- Payment 1: Upon signing of the contract: 50% (\$30,000)
- Payment 2: Upon Project Completion: 50% (\$30,000)

B. In addition, TurningArt will procure, prepare and manage all artwork Product in accordance with the budget and Scope of Work provided herein.

C. All payments to TurningArt will be made via Check, ACH or Wire.



PURCHASE SERVICE AGREEMENT

4. Term and Termination

This Agreement shall commence as of the Effective Date and shall continue through the installation of the artwork program outlined in Exhibit A, currently anticipated in September 2025. The term of this Agreement may be amended by written agreement of the Parties.

If all of the Services required by this Agreement of TurningArt have been satisfactorily performed and full payment has been received by TurningArt for artwork procurement and for all such Services, either Party may terminate this Agreement effective immediately upon written notice to the other Party.

5. Confidentiality

For purposes of this Agreement, each Party's confidential information ("Confidential Information") shall mean all proprietary, secret or confidential information or data relating to Client or TurningArt and their respective operations, employees, services, clients or customers, respectively, that such Party supplies in connection with this Agreement and that either is designated by the disclosing Party as confidential or that the receiving Party should reasonably believe is confidential based on the subject matter or the circumstances of its disclosure. Confidential Information does not include information that is (a) publicly known; (b) already known to the Receiving Party; (c) lawfully disclosed by a third party; (d) independently developed; or (e) disclosed pursuant to legal requirement or order.

Each Party receiving Confidential Information of the other Party shall (i) maintain the Confidential Information in strict confidence; (ii) use at least the same degree of care in maintaining the secrecy of the Confidential Information as it uses in maintaining the secrecy of its own proprietary, secret, or confidential information, but in no event less than a reasonable degree of care; (iii) use Confidential Information only to fulfill its obligations under this Agreement and for no other purpose; and (iv) return or destroy all documents, copies, notes, or other materials containing any portion of the Confidential Information upon request by Client or TurningArt or upon termination of this Agreement, provided, however, the returning Party may retain one copy of all material returned for archival evidentiary purposes.

6. Limitation of Liability and Indemnification

Neither Party nor its affiliates shall be liable for any indirect, incidental, consequential or special or punitive damages of any kind, including without limitation, damages for loss of use, loss of data, lost revenue or profits, in connection with the Services or any matter to which this Agreement relates.

Each party shall indemnify the other party and its affiliates from and against all losses, damages and claims arising under or in connection with (a) that party's breach of this agreement, or (b) damage to the property of the other party or third-party personal injury or death caused by the gross negligence or willful misconduct of the indemnifying party or its agents.

TurningArt will exercise its best judgment and reasonable care in the performance of its duties under this Agreement and shall not be liable for any error of judgment or mistake of law or for any loss suffered by Client in connection with matters to which this Agreement relates except for a loss resulting from willful misfeasance, bad faith or gross negligence on the part of TurningArt in the performance of its duties. IN NO EVENT SHALL THE AGGREGATE LIABILITY OF TURNINGART ARISING UNDER THIS AGREEMENT, WHETHER IN CONTRACT, TORT OR OTHERWISE, EXCEED THE TOTAL AMOUNT OF FEES FOR SERVICES (FOR THE AVOIDANCE OF DOUBT, EXCLUDING THE PROCUREMENT COSTS) PAID BY CLIENT TO TURNINGART WITHIN THE PRECEDING TWELVE (12) MONTHS.

7. Independent Contractors

Client and TurningArt are independent contractors and nothing in this Agreement shall be construed to create an agency, employer/employee, partnership, joint venture or any other relationship between the Parties. Each Party will be responsible for income, employment and/or other taxes, and workers' compensation liabilities for its employees and other personnel providing services hereunder. Neither Party shall have the authority to make any commitment on behalf of the other.

8. General Terms

This Agreement is governed by and construed under the laws of Massachusetts, without regard to its conflicts of law principles. Disputes shall be resolved exclusively in the Federal or State Courts of Massachusetts located in Boston. Neither party shall object to the venue in any such court or claim that any such court is an inconvenient forum. The Client may not assign this Agreement or any of its rights or obligations hereunder. Any waiver or failure to enforce any provision of this Agreement on one occasion will not be deemed a waiver of any other provision or of such provision on any other occasion. The obligations of either party to perform under this Agreement will be excused during each period of delay caused by acts of God, war or terrorism, or by shortages of power or materials or governmental orders that are beyond the reasonable control of the party obligated to perform and prevent such party from being able to perform. During the term of this Agreement and for three (3) years thereafter, the Client may not purchase or rent artwork created by an artist introduced to the Client by TurningArt, except for purchases or rentals directly from TurningArt. This Agreement, including all exhibits and attachments, constitutes the entire agreement between the parties and supersedes any prior or contemporaneous understandings, agreements or representations by or among the parties, written or oral, that may have related in any way to the subject matter hereof. The section headings in this Agreement are for reference only and shall not affect in any way the meaning or interpretation of this Agreement. This Agreement may only be amended by the execution and delivery of a written instrument by or on behalf of each of the parties hereto. This Agreement may be executed in any number of counterparts, each of which shall be deemed an original, but of which shall together constitute one and the same instrument.

9. Copyright

The Client expressly understands and agrees that the Artists shall retain copyrights for all artwork procured, commissioned, or rented by the Client, whether original or reproductions

10. Nonsolicitation of TurningArt's vendors.

During the term of this Agreement and for three (3) years thereafter, the Client may not solicit or otherwise purchase or rent artwork created by an artist introduced to the Client by TurningArt.

[Signature Page Follows]



PURCHASE SERVICE AGREEMENT

IN WITNESS WHEREOF, the Parties hereto have executed this Agreement as of the Effective Date.

CITY OF HUTCHINS

By: _____

Name: _____

Title: _____

TURNINGART INC.

By: _____

Name: Mari Silipo Cook

Title: President



Turning Art

Thank you!

PREPARED BY

Erin Doherty | Senior Art Advisor | erin@turningart.com

Aubrey Thorp | Senior Art Advisor | aubrey@turningart.com