



PRECAST CONCRETE BUILDINGS

Restroom
Shower
Storage

Concession
Multipurpose
Utility



www.cxtinc.com
800.696.5766



ISO 9001: 2015 Certified
PCI Certified

CXT® restroom, shower, concession, and multipurpose buildings are delivered to your site ready to use and require no construction, concrete blocks or tilt-up panels that increase installation time. Our structures are manufactured with high-strength precast concrete floors, walls and roofs and are aesthetically designed in multiple floor plans, colors, and textures. Our vandal-resistant engineering minimizes abusive wear and maximizes our structures' service life under extreme conditions caused by flood, snow, wind and zone-4 seismic loads.

CXT buildings meet all local and state building codes, and A.D.A. specifications.

SIMPLE TO INSTALL

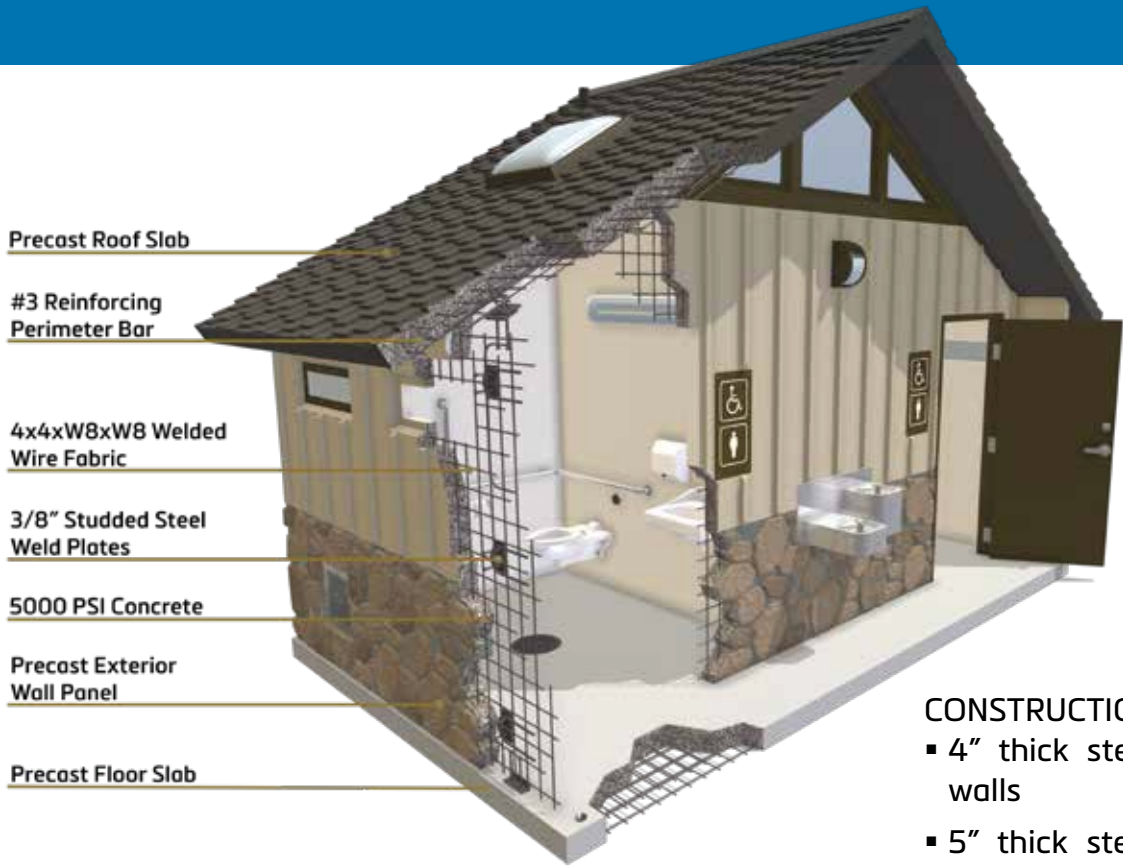
- Minimal site preparation required
- Pre-plumbed and wired for efficient installation

READY TO USE

- Prefabricated and delivered complete and ready to use
- Can typically be in use on the day of installation

EASY TO MAINTAIN

- Interiors resist abusive wear
- Quickly cleaned with warm soapy water and a brush



CONSTRUCTION

- 4" thick steel-reinforced concrete walls
- 5" thick steel-reinforced concrete roof and floor
- Vandal-resistant components
- Can withstand extreme conditions caused by flood, snow, wind and zone-4 seismic loads

TOUGHER THAN KITS, BLOCK OR STEEL

LB Foster
CXT® Products

cxtinc.com | 800.696.5766

DESIGNED TO LOOK GOOD AND BUILT TO LAST

CXT concrete buildings are manufactured at three facilities in the United States: Nampa, Idaho; Hillsboro, Texas; and Williamstown, West Virginia. All three plants are ISO 9001:2015 certified, which means that they meet the highest standards of quality and safety.

Our buildings are precast concrete structures that are designed for durability and ease of installation. CXT buildings require minimal site preparation and can typically be in use on the day of installation. They are prefabricated and delivered complete and ready to use, including plumbing and electrical where applicable. The interiors are designed to resist abusive wear and can be cleaned quickly with warm soapy water and a brush.



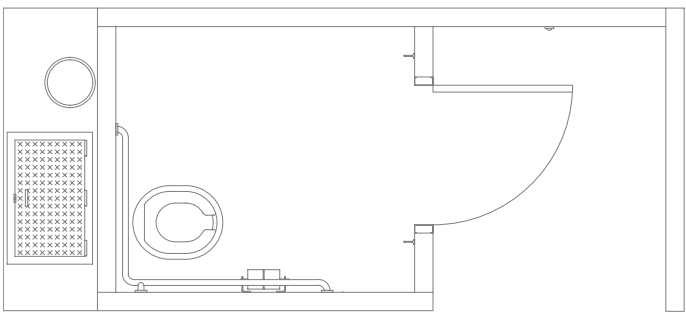
DELIVERED » INSTALLED » READY TO USE



VAULT WATERLESS RESTROOMS - SINGLE

Single Vault

- 1 single user waterless restroom
- 6' 6" x 14' 8" floor plan
- 1 ADA toilet riser with seat
- ADA grab bars
- 1 waste clean out hatch
- 1- 1,000 gallon concrete waste vault



Standard Single Vault Floor Plan (right hand)

CASCADIAN



GUNNISON



ROCKY MOUNTAIN



VAULT INSTALLATION

- Installed below ground level with vault dimensions that match the perimeter of the building to provide a stable structure that supports the full weight of the building.
- Each vault holds up to 1,000 gallons of waste (approximately 15,000 uses).
- Sloped so that waste will drain to the clean out end.
- Lined with a black polyethylene liner that is cast into the side walls of the concrete vault using dovetail embeds.



VAULT WATERLESS RESTROOMS - DOUBLE

Double Vault

- 2 single user waterless restrooms
- 11' 11" x 14' 4" floor plan
- 2 ADA toilet riser with seat
- ADA grab bars
- 2 waste clean out hatches
- 2- 1,000 gallon concrete waste vaults

DOUBLE CASCADIAN



DOUBLE ROCKY MOUNTAIN

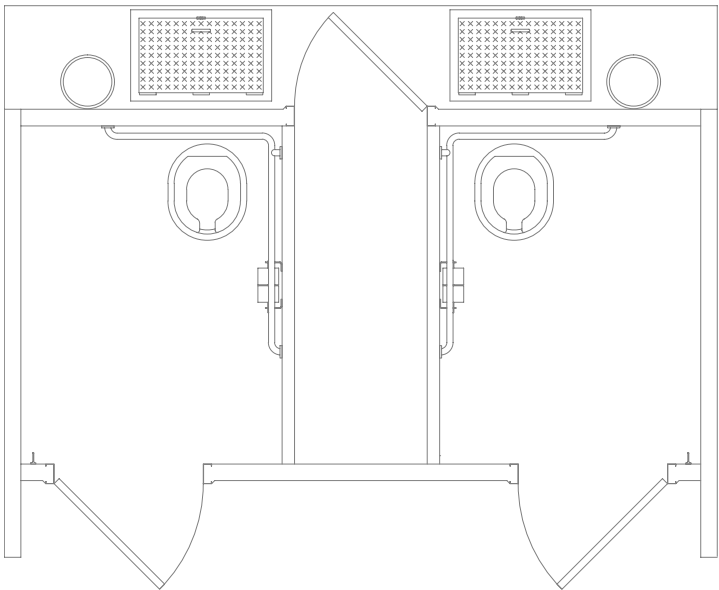


TIOGA



SWEET SMELLING TECHNOLOGY

- Designed and placed to ensure an unobstructed airflow over the top of the vent stack for passive ventilation.
- The location of the wall vent and orientation of the building takes advantage of the unobstructed airflow.
- The positive continual air flow carries the vault air out through the vent pipe keeping the building odor-free.



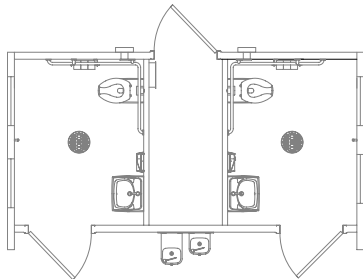
Standard Double Vault Floor Plan

FLUSH RESTROOMS - SINGLE USER

CORTEZ - 10'3" x 17'



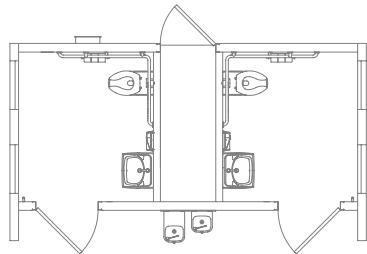
- 2 single user restrooms
- 2 ADA toilets
- 2 sinks
- ADA grab bars
- Interior and exterior lights



DENALI - 10'3" x 17'



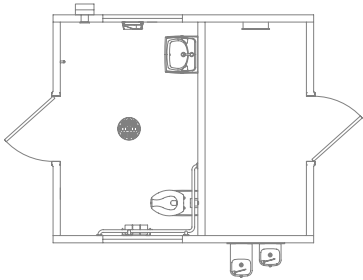
- 2 single user restrooms
- 2 ADA toilets
- 2 sinks
- ADA grab bars
- Interior and exterior lights



OZARK I - 10'6" x 12'



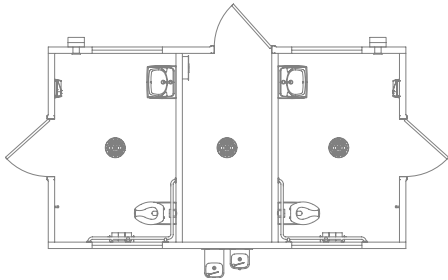
- 1 single user restroom
- 1 ADA toilet
- 1 sink
- ADA grab bars
- Interior and exterior lights



OZARK II - 10'6" x 18'8"



- 2 single user restrooms
- 2 ADA toilets
- 2 sinks
- ADA grab bars
- Interior and exterior lights

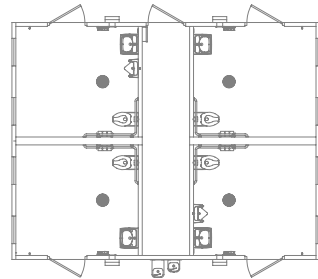


FLUSH RESTROOMS - MULTIUSER

ARAPAHOE - 20' x 26'



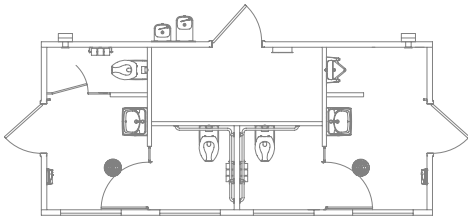
- 4 family assist restrooms
- 4 ADA toilets
- 1 urinal
- 4 sinks
- ADA grab bars
- Interior and exterior lights



KODIAK - 10'6" x 23'8"



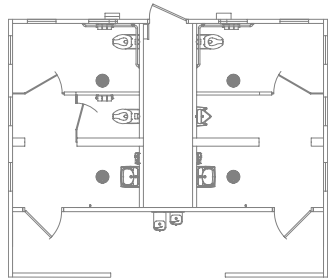
- 2 multiuser flush restrooms
- 3 toilets (2 ADA)
- 1 urinal
- 2 sinks
- ADA grab bars
- Interior and exterior lights



MONTROSE - 15'8" x 26'



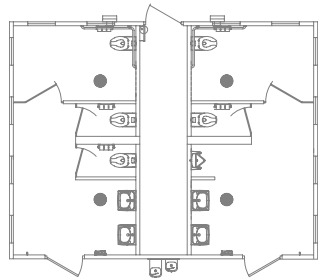
- 2 multiuser flush restrooms
- 3 toilets (2 ADA)
- 1 urinal
- 2 sinks
- ADA grab bars
- Interior and exterior lights



TAOS - 20' x 26'



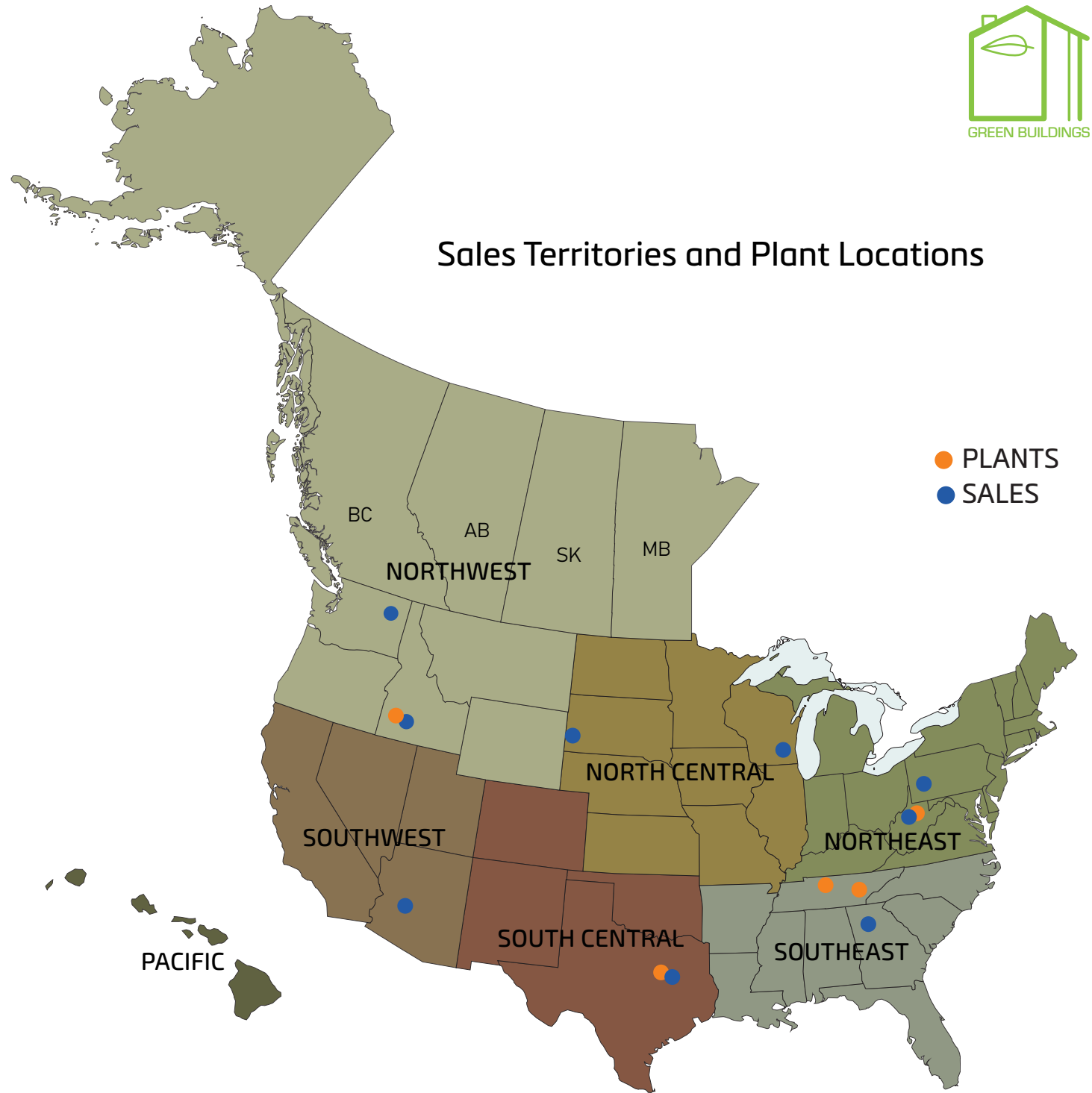
- 2 multiuser flush restrooms
- 5 toilets (2 ADA)
- 1 urinal
- 2 sinks
- ADA grab bars
- Interior and exterior lights



Drawings for reference only.

CONCESSION/RESTROOM BUILDINGS

CXT concrete buildings are durable, versatile, strong, and can be easily customized to meet the specific needs of each project. CXT buildings can be found at recreational sites, including federal, state, county, city, and private facilities in the United States, Canada, and Mexico.



Sales Territories and Plant Locations

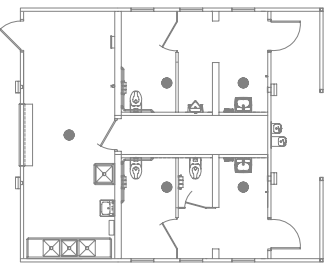
- PLANTS
- SALES



MALIBU - 25'8" x 26'4"



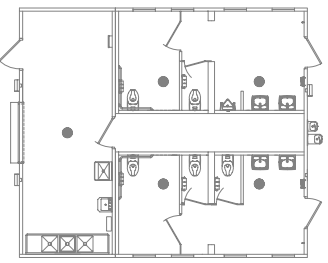
- 2 multiuser flush restrooms with concession
- 3 toilets (2 ADA)
- 1 urinal
- 2 sinks
- ADA grab bars
- 6' roll-up concession door
- 3-compartment stainless steel sink
- Interior and exterior lights



POMONA - 30' x 26'



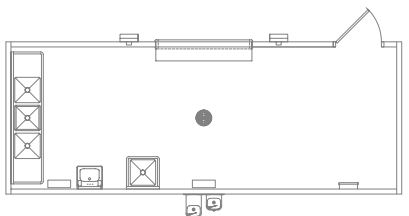
- 2 multiuser flush restrooms with concession
- 5 toilets (2 ADA)
- 1 urinal
- 4 sinks
- ADA grab bars
- 6' roll-up concession door
- 3-compartment stainless steel sink
- Interior and exterior lights



FONTANA - 10' x 26'



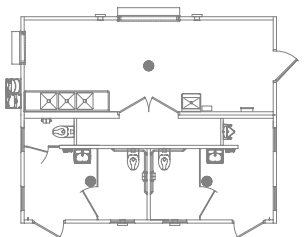
- Concession building
- 6' roll-up concession door
- 3-compartment stainless steel sink
- Interior and exterior lights



KEYSTONE - 10' x 26'



- 2 multiuser flush restrooms with concession
- 3 toilets (2 ADA)
- 1 urinal
- 2 sinks
- ADA grab bars
- 6' roll-up concession door
- 3-compartment stainless steel sink
- Interior and exterior lights



Drawings for reference only.

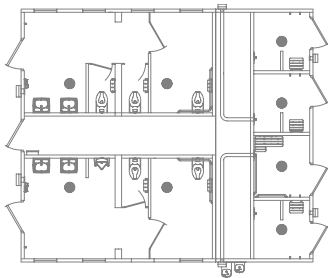
cxtinc.com | 800.696.5766

SHOWER/RESTROOM BUILDINGS

CHEYENNE - 26' x 30'



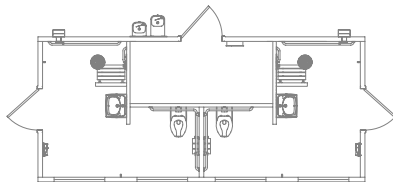
- 2 multiuser flush restrooms
- 4 separate shower rooms (1 ADA)
- Water heater
- 5 toilets (2 ADA)
- 1 urinal
- 4 sinks
- ADA grab bars
- Interior and exterior lights



RAINIER - 10'6" x 23'



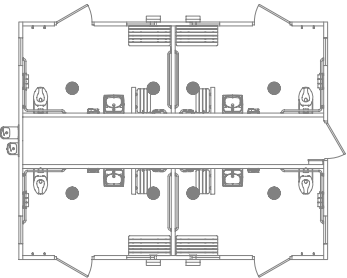
- 2 single user flush restrooms with shower
- Water heater
- 2 ADA toilets
- 2 sinks
- ADA grab bars
- Interior and exterior lights



NAVAJO - 20' x 26'



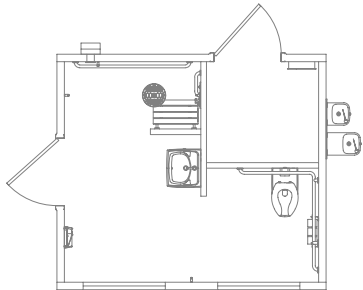
- 4 individual family assist flush restrooms and showers
- Water heater
- 4 ADA toilets
- 4 sinks
- ADA grab bars
- Interior and exterior lights



PIONEER - 10'6" x 12'



- 1 single user flush restroom and shower
- Water heater
- 1 ADA toilet
- 1 sink
- ADA grab bars
- Interior and exterior lights



INTERIORS AND CHASE



Drawings for reference only.

MULTIPURPOSE BUILDINGS

- Two standard sizes:
 - 10' 6" x up to 12'
 - 10' 6" x 12' to 20'
- Galvanized 3068 steel door
- Wall vent
- Customizable to accommodate a variety of uses, such as:
 - Storage
 - Electric and communication equipment
 - Ticket/information building
 - Pump and utility equipment
 - Chemical containment
 - Guard house and office



CUSTOM BUILDINGS

CXT can customize colors, textures and other options like privacy walls, porches and awnings to match the aesthetics of your project. Other rooms such as laundry, changing rooms, storage rooms and locker rooms can be added to enhance the amenities at your location.



Flush restroom with custom roof pitch



Flush restroom and fish cleaning station



Flush restroom/concession with custom roll up door



Flush restroom with golf cart shelter

Contact your regional sales representative to assist with designing a custom building for your project.





CXT steel-reinforced concrete buildings are engineered to maintain their aesthetics and withstand extreme conditions caused by snow, wind, water, and zone 4 seismic loads.



TOUGH AS MOTHER NATURE

cxtinc.com | 800.696.5766

COLORS

EXTERIOR

						
Amber Rose	Berry Mauve	Buckskin	Cappuccino Cream	Charcoal Gray	Cocoa Milk	Evergreen
						
Georgia Brick	Golden Beige	Granite Rock	Hunter Green	Java Brown	Liberty Tan	Malibu Taupe
						
Mocha Caramel	Natural Honey	Nuss Brown	Oatmeal Buff	Pueblo Gold	Raven Black	Rich Earth
						
Rosewood	Sage Green	Salsa Red	Sand Beige	Sun Bronze	Toasted Almond	Western Wheat

DISCLAIMER: The color samples shown are approximations only. Job site-applied colors will vary from this color chart due to printing variances as well as the texture and porosity of the substrate. CXT® recommends applying a color sample to an inconspicuous area on the actual substrate to verify color choice.

Customers can also request specific colors by providing the paint code, paint supplier, and a description of the desired color.

EXTERIOR STONE

			
Basalt	Mountain Blend	Natural Grey	Romana

TEXTURES

EXTERIOR WALL

			
Barnwood	Board & Batt	Horizontal Lap	Stucco
			
Split Face Block	Distressed Wood	Brick	
			
Napa Valley	River Rock	Flagstone	Stacked Rock

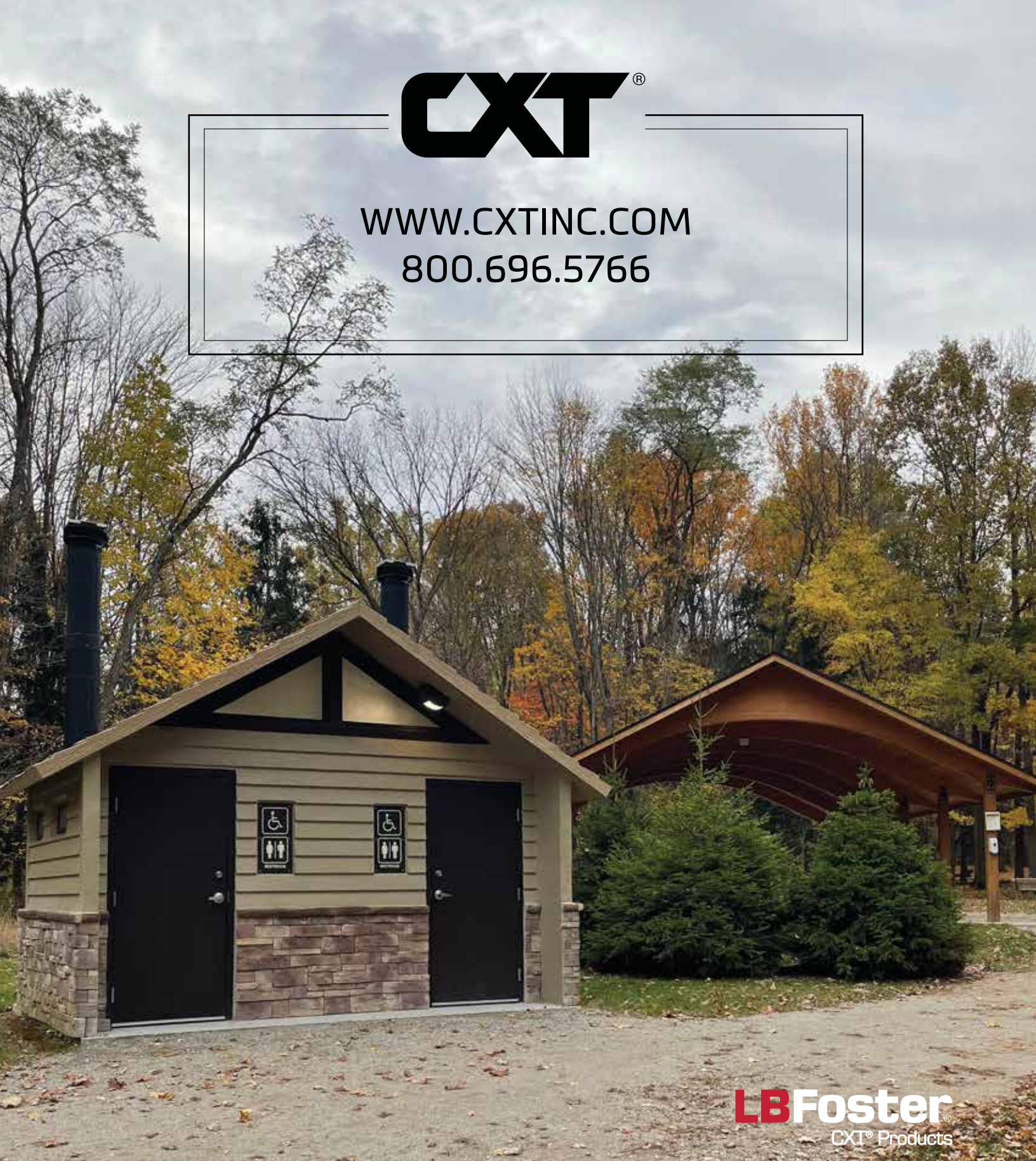
ROOF

	
Cedar Shake	Ribbed Metal





WWW.CXTINC.COM
800.696.5766



LB Foster
CXT® Products