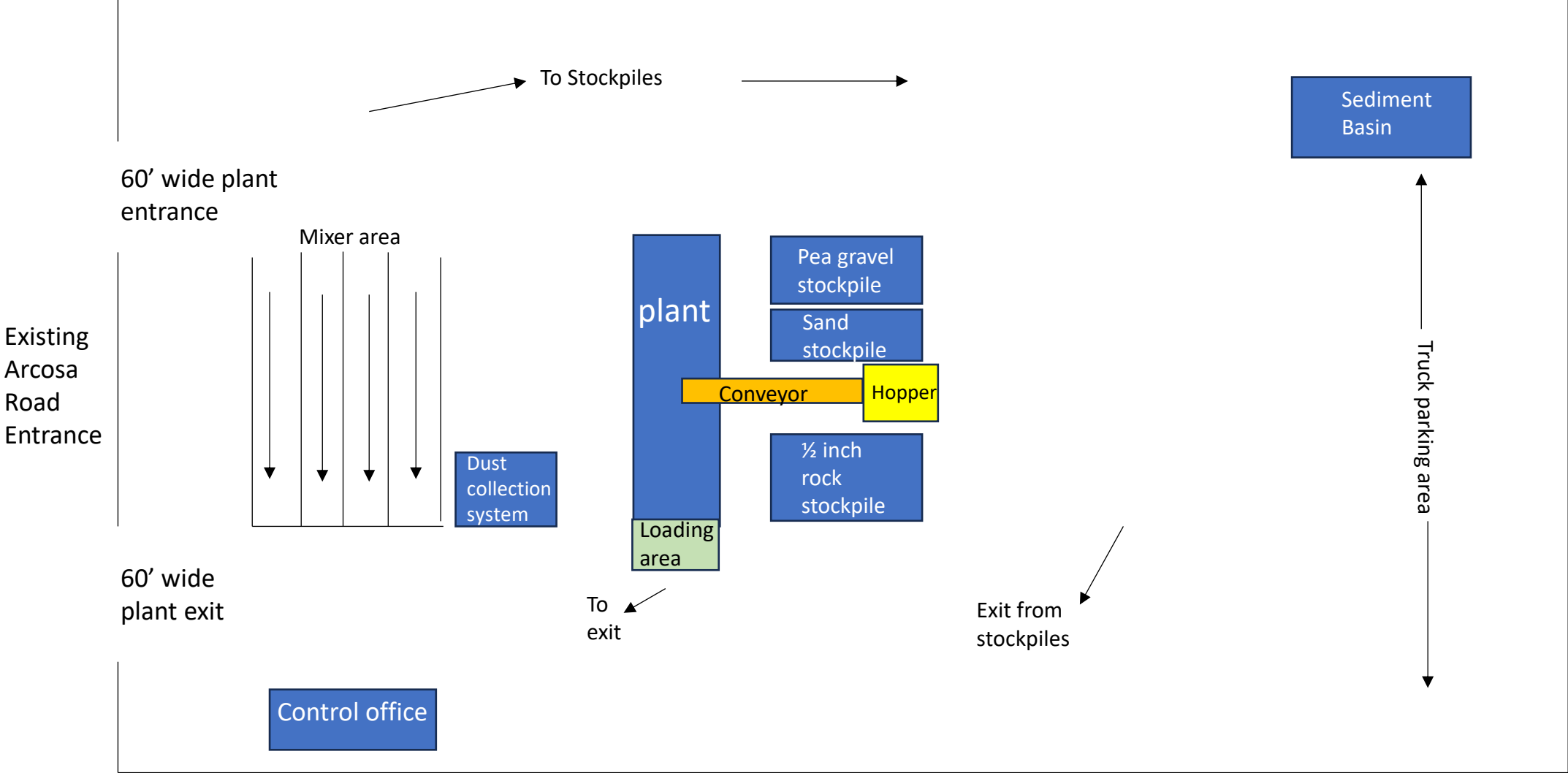
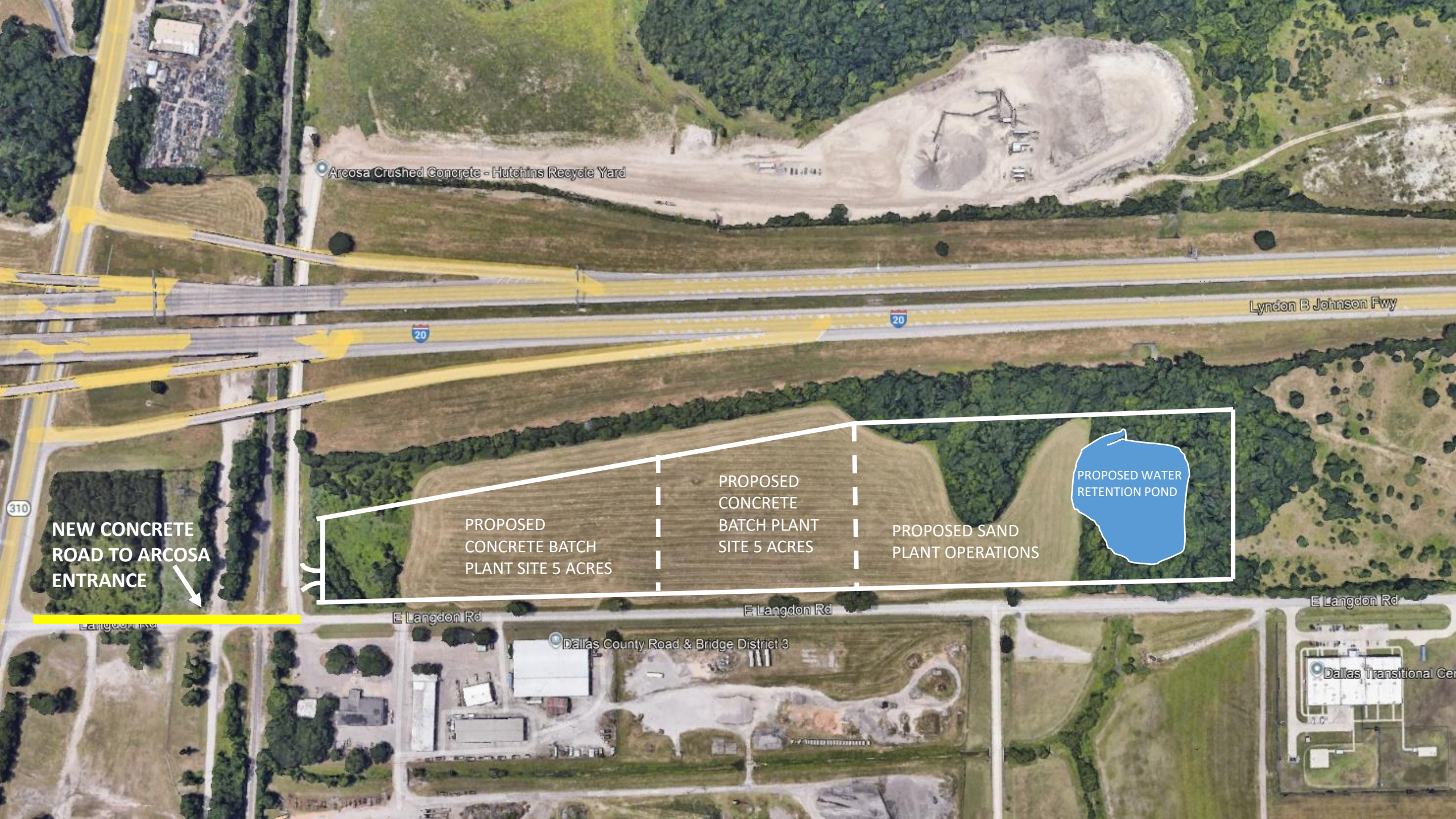


Proposed 5 Acre Concrete Batch Plant Site
City of Hutchins, TX – East Langdon Road

400' x 500'
approximately



East Langdon Road



Arcosa Crushed Concrete - Hutchins Recycle Yard

Lyndon B Johnson Fwy

20

20

PROPOSED
CONCRETE BATCH
PLANT SITE 5 ACRES

PROPOSED
CONCRETE
BATCH PLANT
SITE 5 ACRES

PROPOSED SAND
PLANT OPERATIONS

PROPOSED WATER
RETENTION POND

NEW CONCRETE
ROAD TO ARCOSA
ENTRANCE

E Langdon Rd

E Langdon Rd

Dallas County Road & Bridge District 3

E Langdon Rd

Dallas Transitional Center

Previous
Plants Built



Previous
Plants Built



Previous
Plants Built



Previous
Plants Built

