



CITY OF HUTCHINS DALLAS COUNTY

DALLAS COUNTY INLAND PORT

OVERVIEW

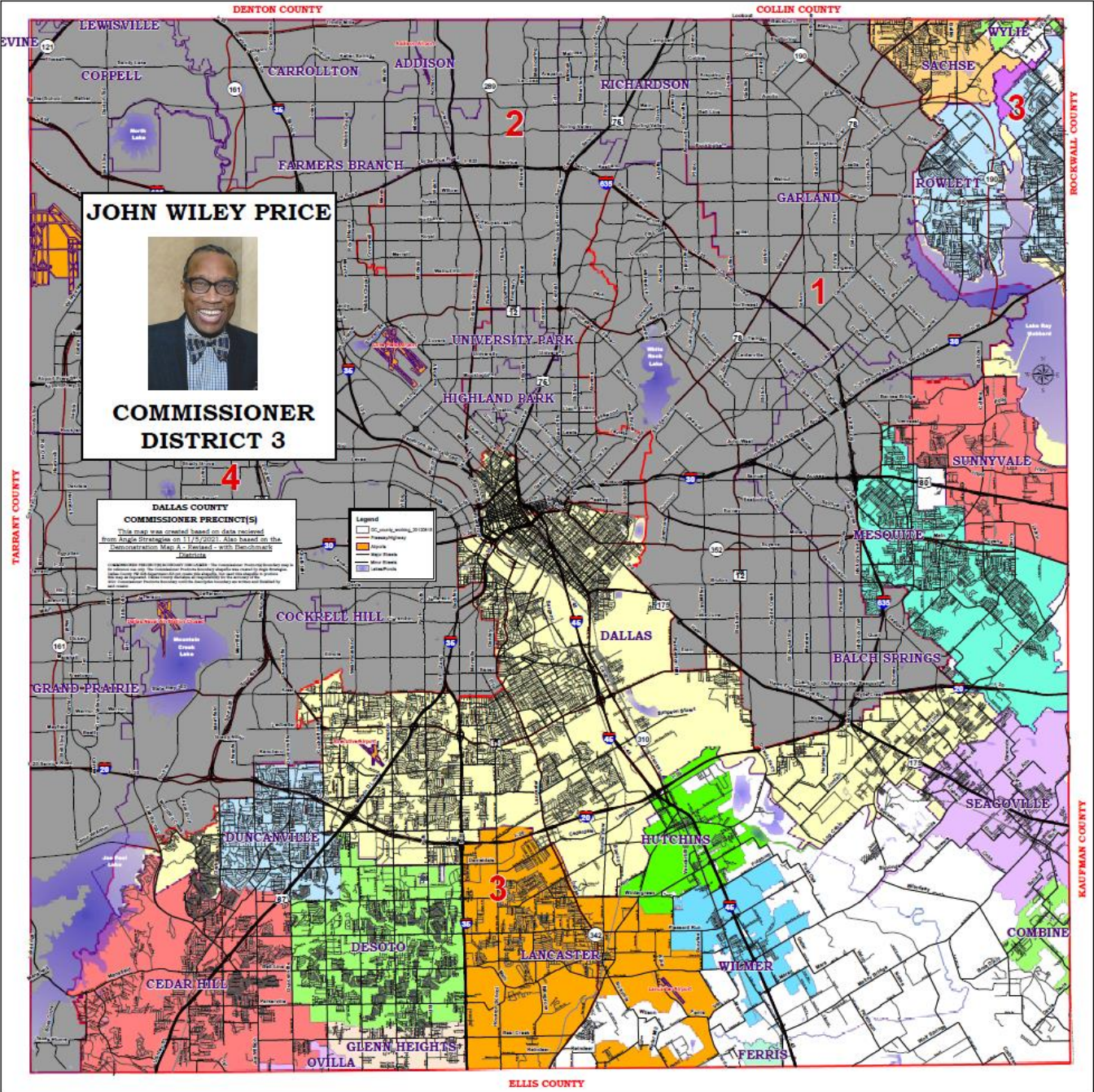
Dallas County Vision

Transportation Infrastructure Projects

- MCIP Projects in/near City of Hutchins
- MCIP Projects in/near District 3
- Inland Port Projects



DISTRICT 3



DALLAS COUNTY VISION

Our Mission: Deliver exceptional services
that promote a
thriving
community

Our Vision: Improving people's lives

Our Values: Professionalism
Customer Focus
Diversity & Inclusion



CITY OF HUTCHINS FACTS

LOCATED IN COUNTY COMMISSIONER DISTRICT 3



DEMOGRAPHICS

13th Most Main Road Miles
in District 3

12th Most Populated City
in District 3



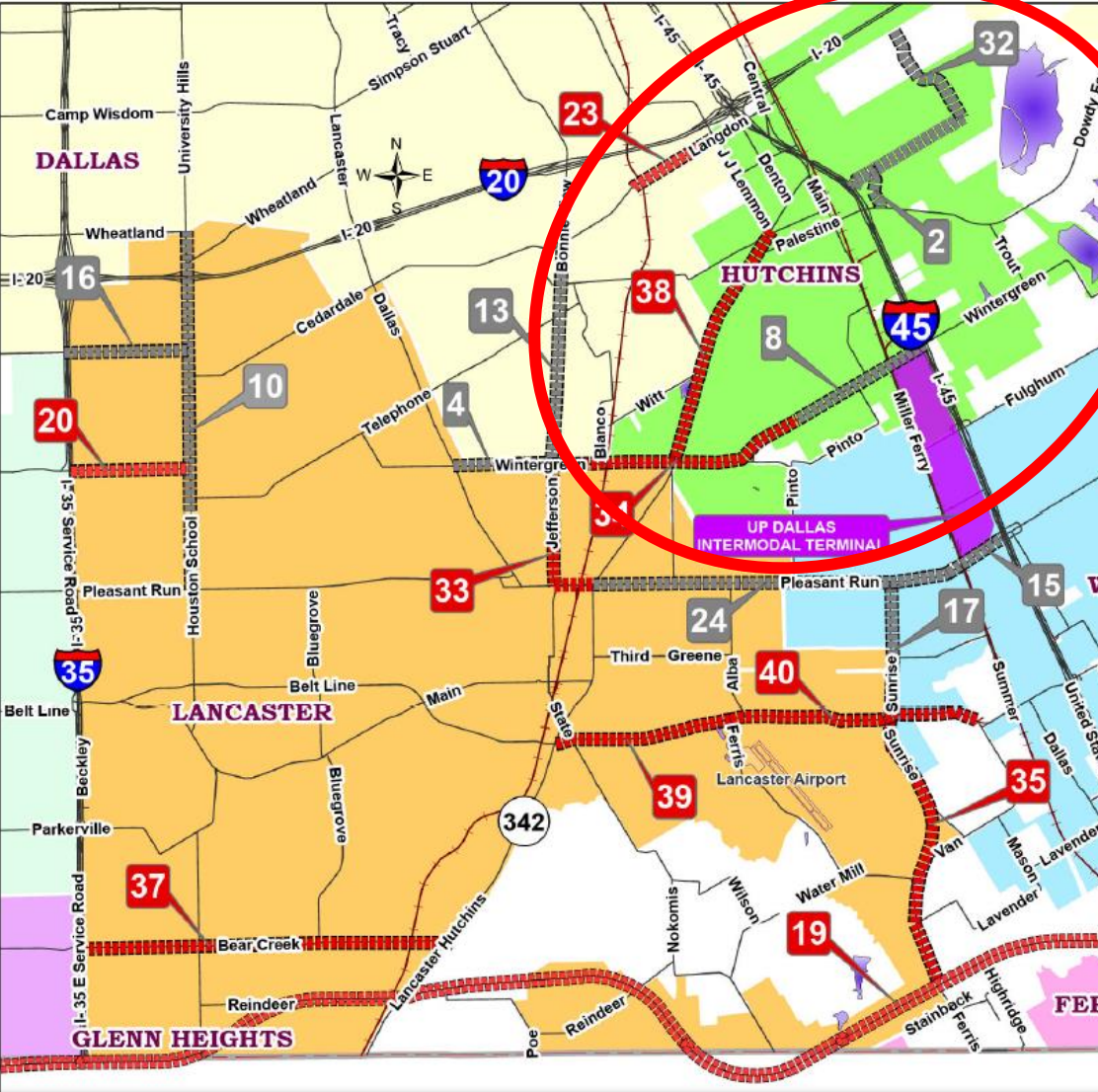
MCIP FUNDING

County District 3 MCIP Funding
in Hutchins since 2000: \$8.032M



CITY OF HUTCHINS PROJECTS

Inland Port Projects with County Participation since 2000



Project	ID
Cleveland Rd (and extension) IH 45 to Dowdy Ferry	2
Wintergreen Rd – SH 342 to Bonnie View Rd	4
Wintergreen Rd UPRR Overpass – IH 45 to ½ mile W of Vanderbilt	8
Houston School Rd – Wheatland Rd to Pleasant Run Rd	10
Bonnie View Rd – Langdon Rd to Wintergreen Rd	13
Pleasant Run UPRR Overpass – Sunrise Rd to IH 45	15
Danielsdale Rd – IH 35E to Houston School Rd	16
Sunrise Rd – Pleasant Run Rd to Belt Line Rd	17
Loop 9 – IH 35E to IH 45 (Alignment subject to change)	19
Wintergreen Rd – IH 35E to Houston School Rd	20
Langdon Rd – W of BNSF RR to Dallas City Limit	23
Pleasant Run Rd – Lancaster/Hutchins to Millers Ferry Rd	24
Buena Vida Way – Langdon Rd to Cleveland Rd	32
Jefferson St – Wintergreen Rd to Pleasant Run Rd	33
Wintergreen Rd – Jefferson St to W of Carpenter Rd	34
Sunrise Rd – Belt Line Rd to North of Loop 9	35
Bear Creek Corridor Study	37
Lancaster/Hutchins Rd – JJ Lemmon Rd to Wintergreen Rd	38
Belt Line Rd – Lancaster/Hutchins Rd to Ferris Rd	39
Belt Line Rd – Ferris Rd to East of Mason Rd	40



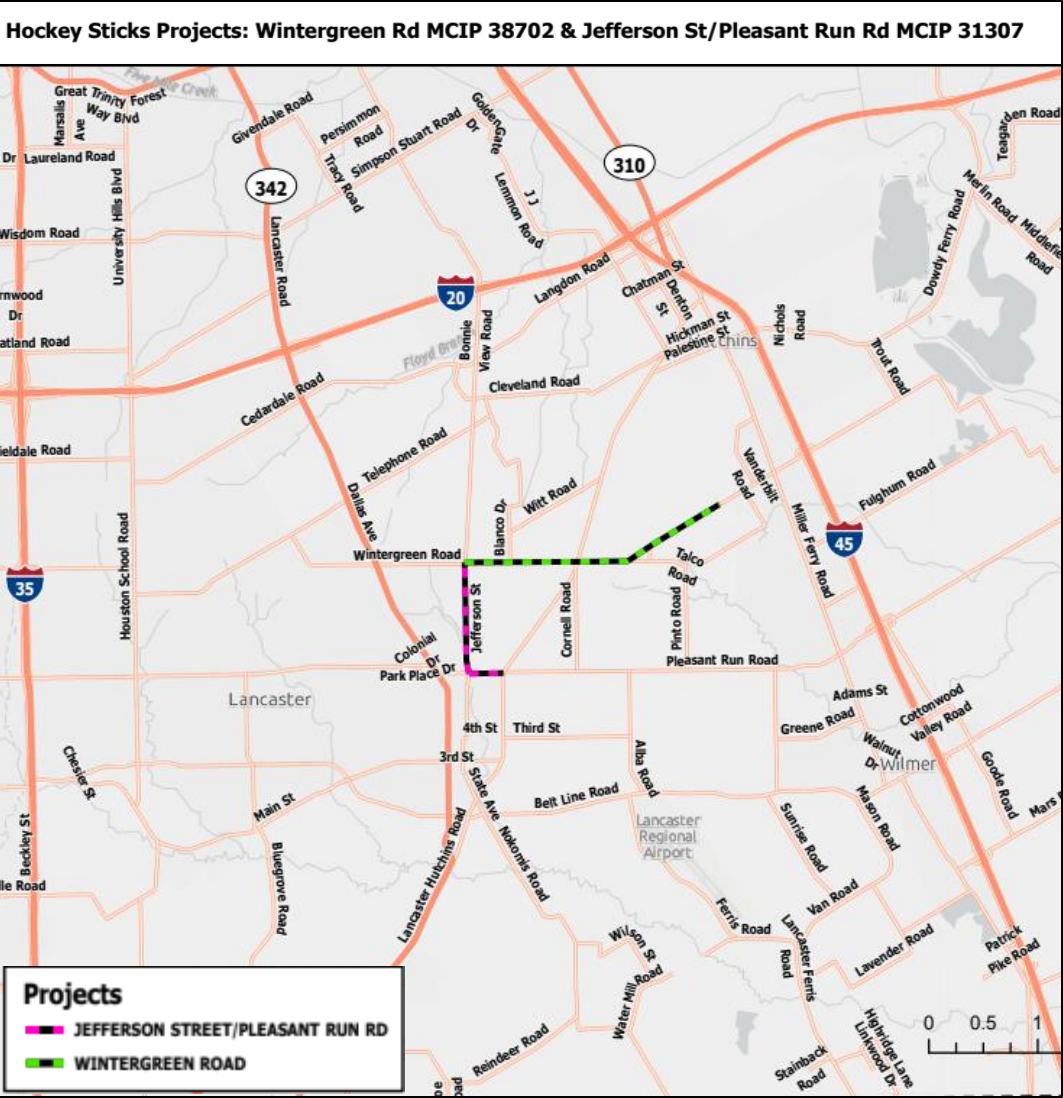
PROJECT TOTALS FOR THE CITY OF HUTCHINS

Project Totals for The City of Hutchins			
	County District 3 MICP Totals in Hutchins	Other Entity Totals	Combined City of Hutchins Totals
Recently Completed	\$3,105,000	\$9,507,000	\$12,612,000
In Planning/Design/Construction	\$4,928,000	\$12,344,000	\$17,272,000
TOTAL	\$8,033,000	\$21,851,000	\$29,884,000

CURRENT PROJECTS IN/NEAR HUTCHINS



INLAND PORT LOOP- HOCKEY STICKS PROJECT



34 Wintergreen Road from Jefferson St. to West of Carpenter Road		
PROJECTS COSTS	PARTICIPATION	STATUS
\$20,726,830	\$9,478,600 TxDOT \$7,748,230 MCIP \$1,500,000 Lancaster \$2,000,000 Hutchins	1) 30% design under review. 2) Upcoming meetings with Lancaster, Hutchins & NCTCOG.



33 Jefferson St. & Pleasant Run from Wintergreen Road to Lancaster-Hutchins Road		
PROJECTS COSTS	PARTICIPATION	STATUS
\$12,751,600	\$8,251,600 TxDOT \$3,000,000 MCIP \$1,500,000 Lancaster	1) Schematic/30% design under review. 2) Upcoming meetings with Lancaster & NCTCOG.



DALLAS COUNTY INLAND PORT (DCIP) MULTIMODAL CONNECTIVITY PROJECT

Project Limits: Belt Line Road from Alba Road to east of Mason Road and Sunrise Road from Pleasant Run Road to the Loop 9 frontage roads

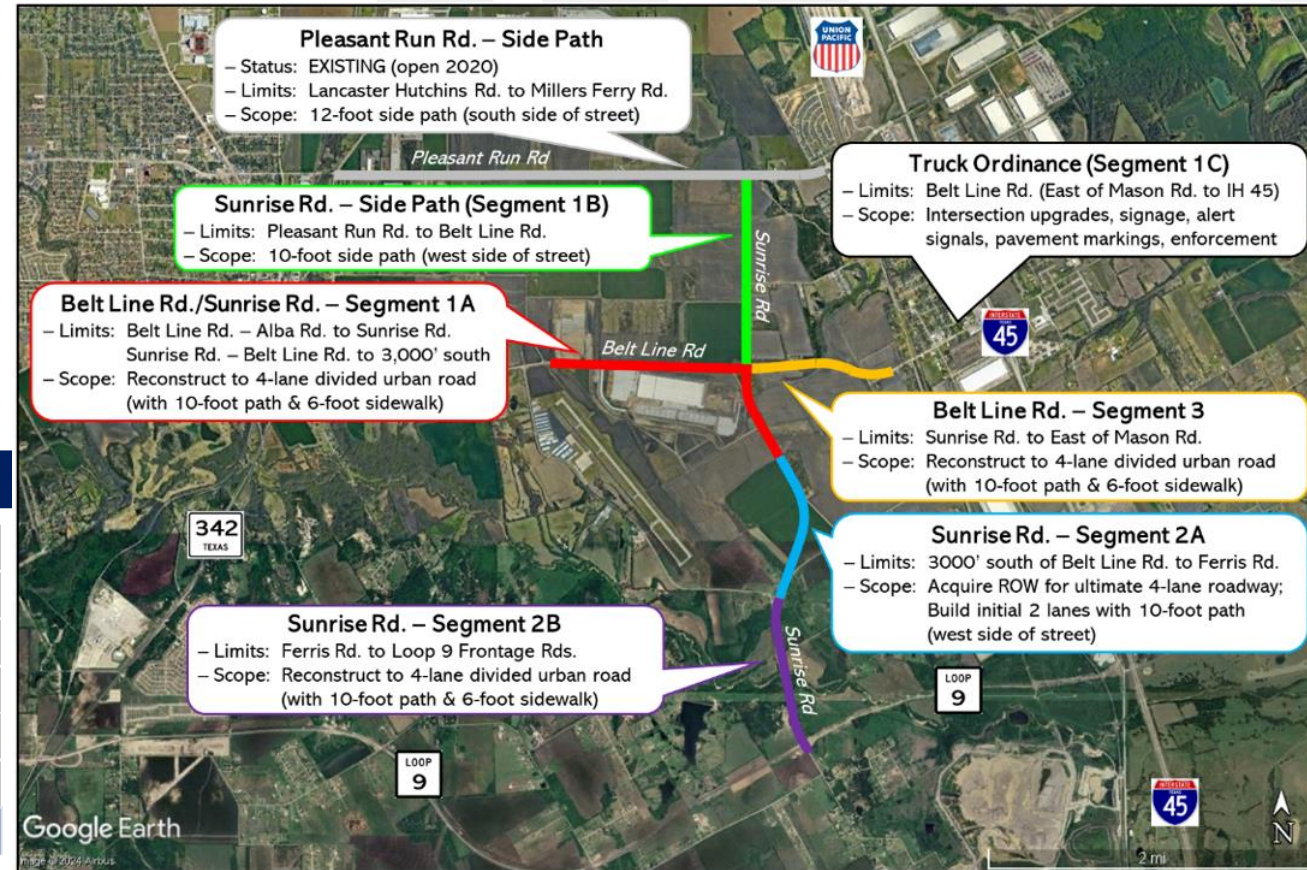
Project scope: widen 2-lane roadways to 4-lane divided facilities with side paths and sidewalks.

Status: Awarded 2024 RAISE Grant

DALLAS COUNTY INLAND PORT (DCIP) MULTIMODAL CONNECTIVITY PROJECT

Recipient	Dallas County
Location	Dallas County, TX: Texas
Project Type	Capital
Urban or Rural	Rural
RAISE Grant Funding	\$25,000,000
Construction Start (estimate)	April 2027
Area of Persistent Poverty or Historically Disadvantaged Community Designation? Yes	

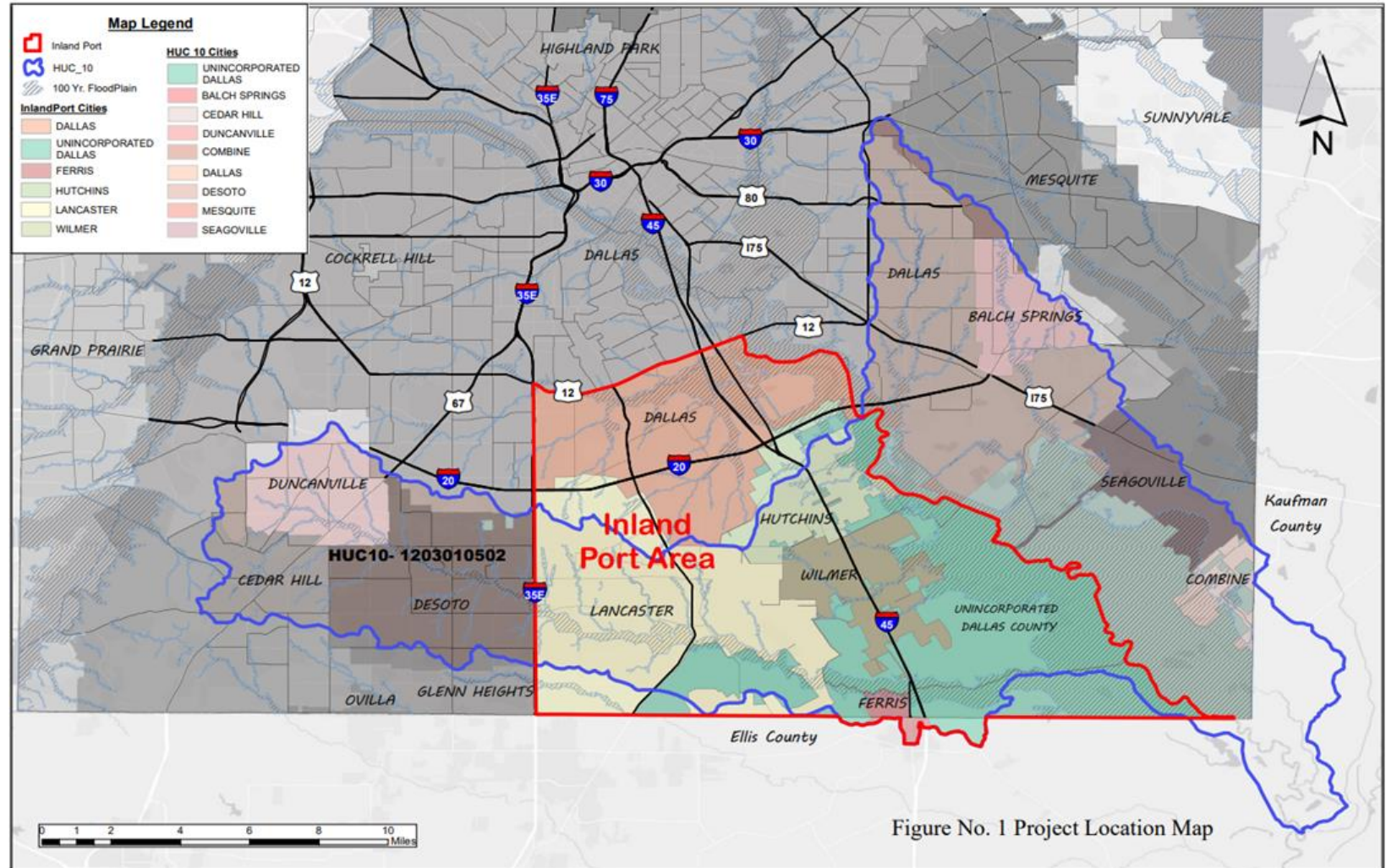
* Estimated construction start date provided by Recipient



INLAND PORT FLOOD PLANNING STUDY

Scope

- H&H of overall HUC-10, including
 - Ten Mile Creek
 - Cottonwood Creek
 - Rawlins Creek
- Existing stormwater drainage $\geq 24''$
- Floodplain mapping
- Assess protection of current system
- Recommend improvements
- Identify projects for Texas Flood Plan



DALLAS COUNTY INTERNATIONAL INLAND PORT SIGNAGE LANCASTER, WILMER, DALLAS & HUTCHINS

Project Limits:

South of IH 20 to the southern Dallas County Boundary Line

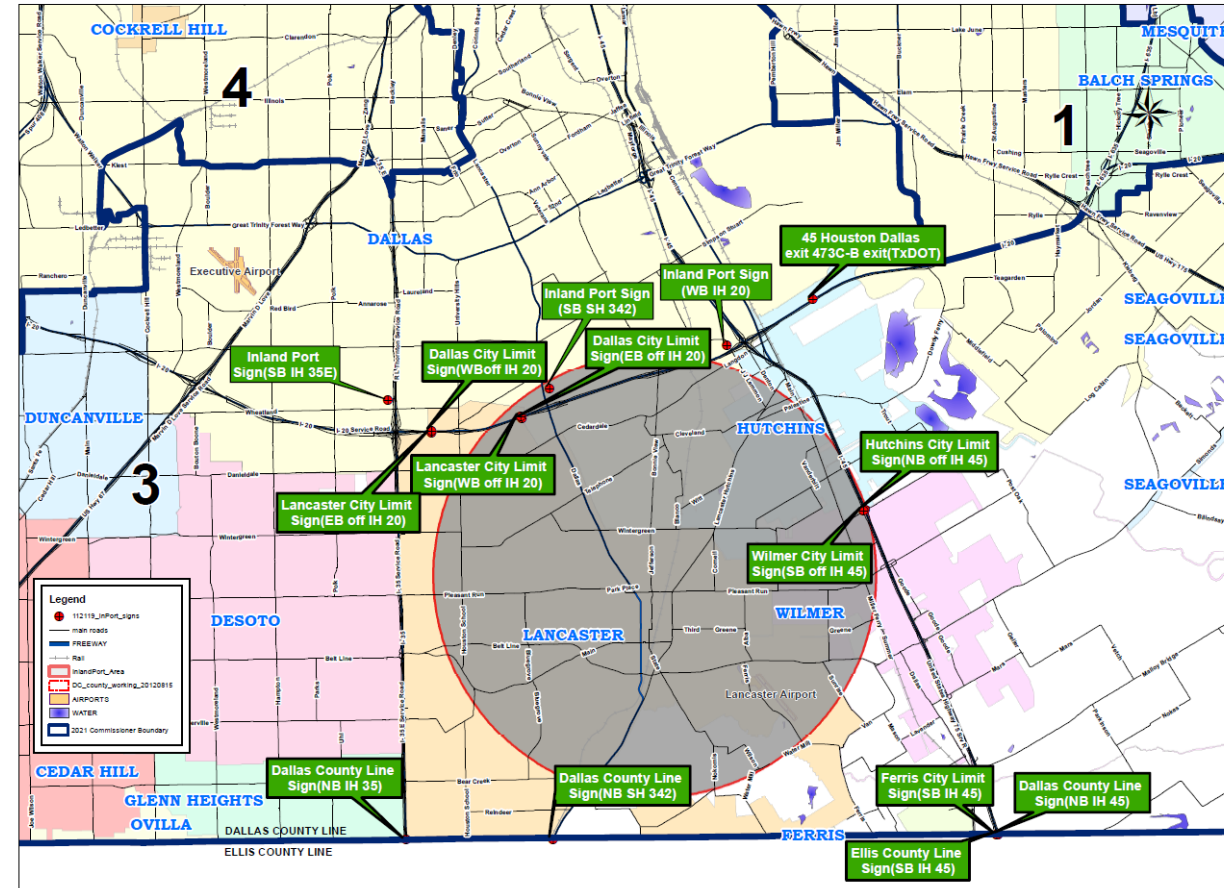
Project Scope: This study will identify the type of signage, potential signage location and develop signage prototype for wayfinding in the Dallas County International Inland Port Area

Project History: Commissioner Price has expressed the need for signage in the Inland Port Area

- Kickoff meeting with Inland Port Cities March 2020
- Initial Coordination with TxDOT April 2020
- Dallas County selected consultant, Civil Associates June 2021
- Signage Work Order was approved in Commissioners Court April 2022
- Partnership with IPTMA and Plaquemine

Status: Kick off meeting held October 2022. Currently on Hold.

PROPOSED INLAND PORT AREA SIGNAGE



LOOP 9 SEGMENT B: IH35E TO IH45

Project Details

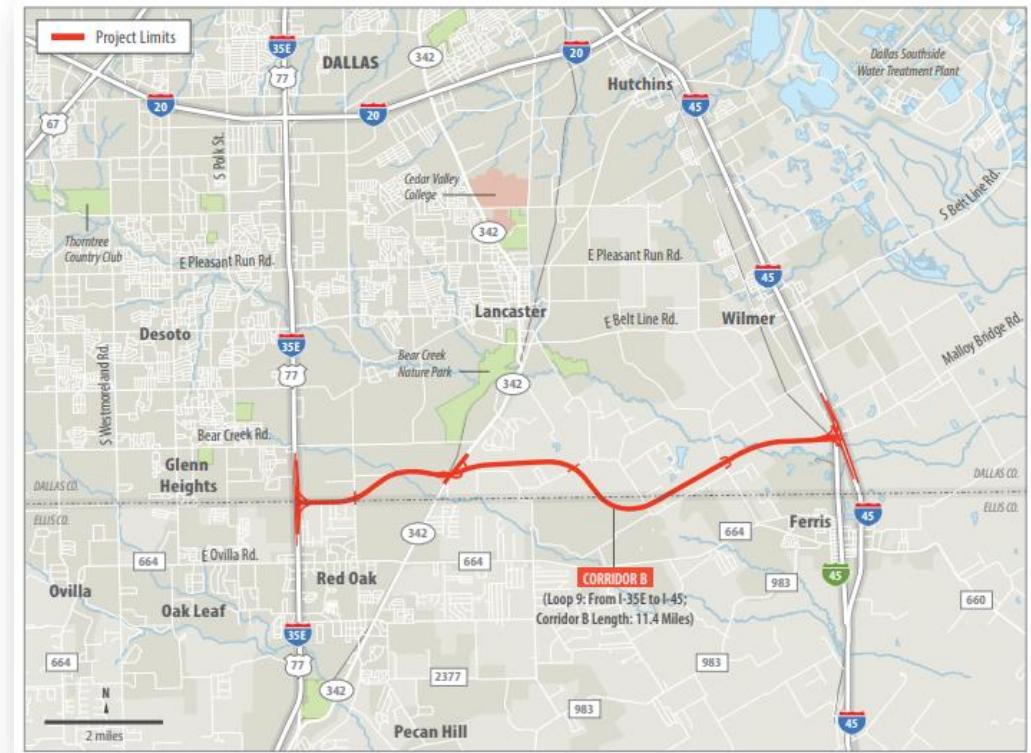
Limits: I-35E To I-45

Csj: 2964-10-005

Description: Construct 0 To 2 (Ultimate 6) Lane Frontage

Status: Under Construction

Total Length: 11.4 Miles



DALLAS COUNTY INLAND PORT



A close-up portrait of a construction worker wearing a white hard hat and clear safety glasses. He has a beard and is looking directly at the camera. A semi-transparent dark rectangular box is overlaid on the lower half of his face, containing the title text in white. He is wearing a dark jacket with a high collar and a bright yellow-green safety vest.

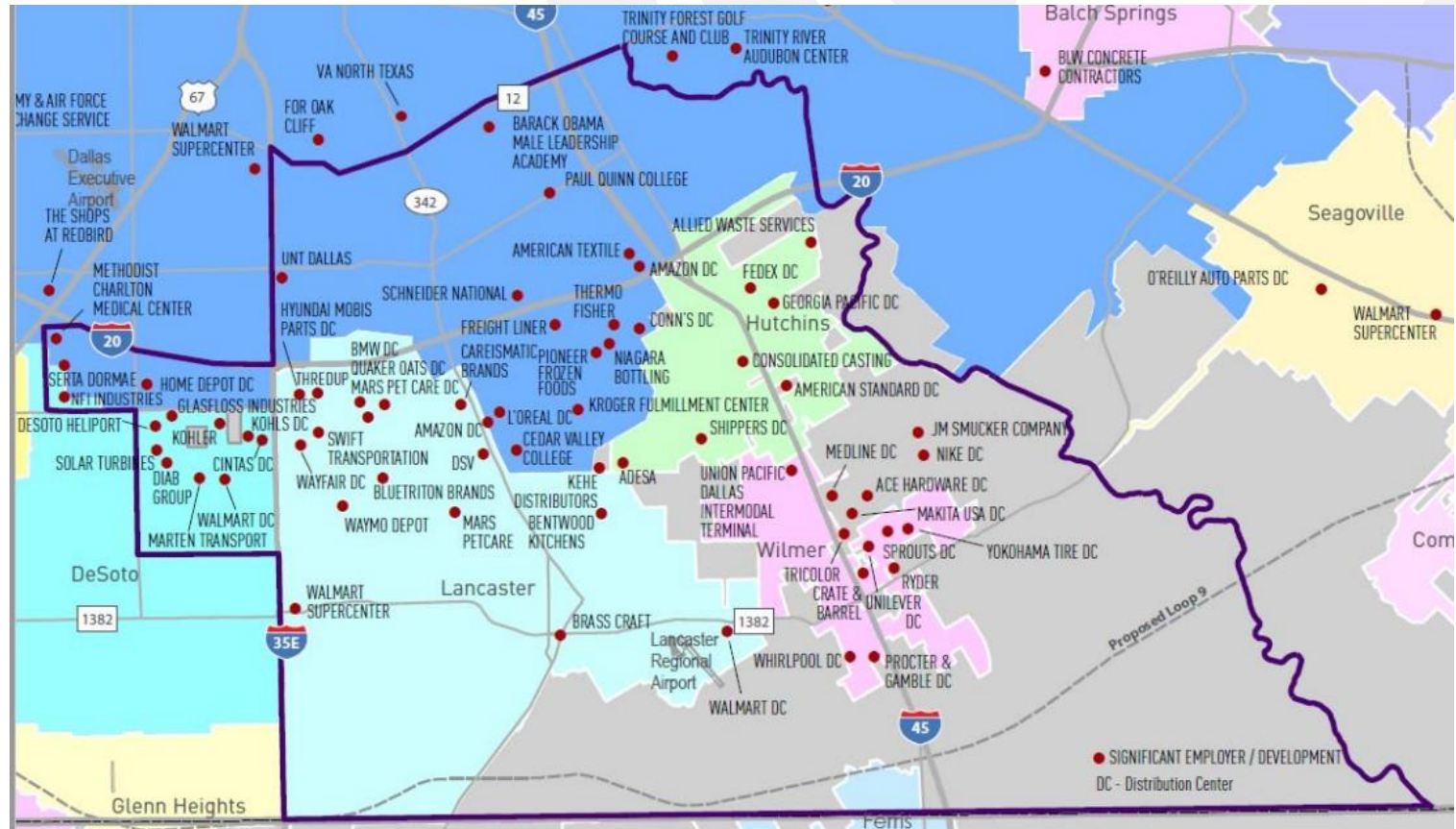
DALLAS COUNTY INLAND PORT VIDEO

WHAT MAKES THIS AN INLAND PORT?

Three Interstates



Union Pacific
Intermodal
Terminal



Dallas-Fort Worth Region's National and International Truck Freight Connectivity

 4 hours

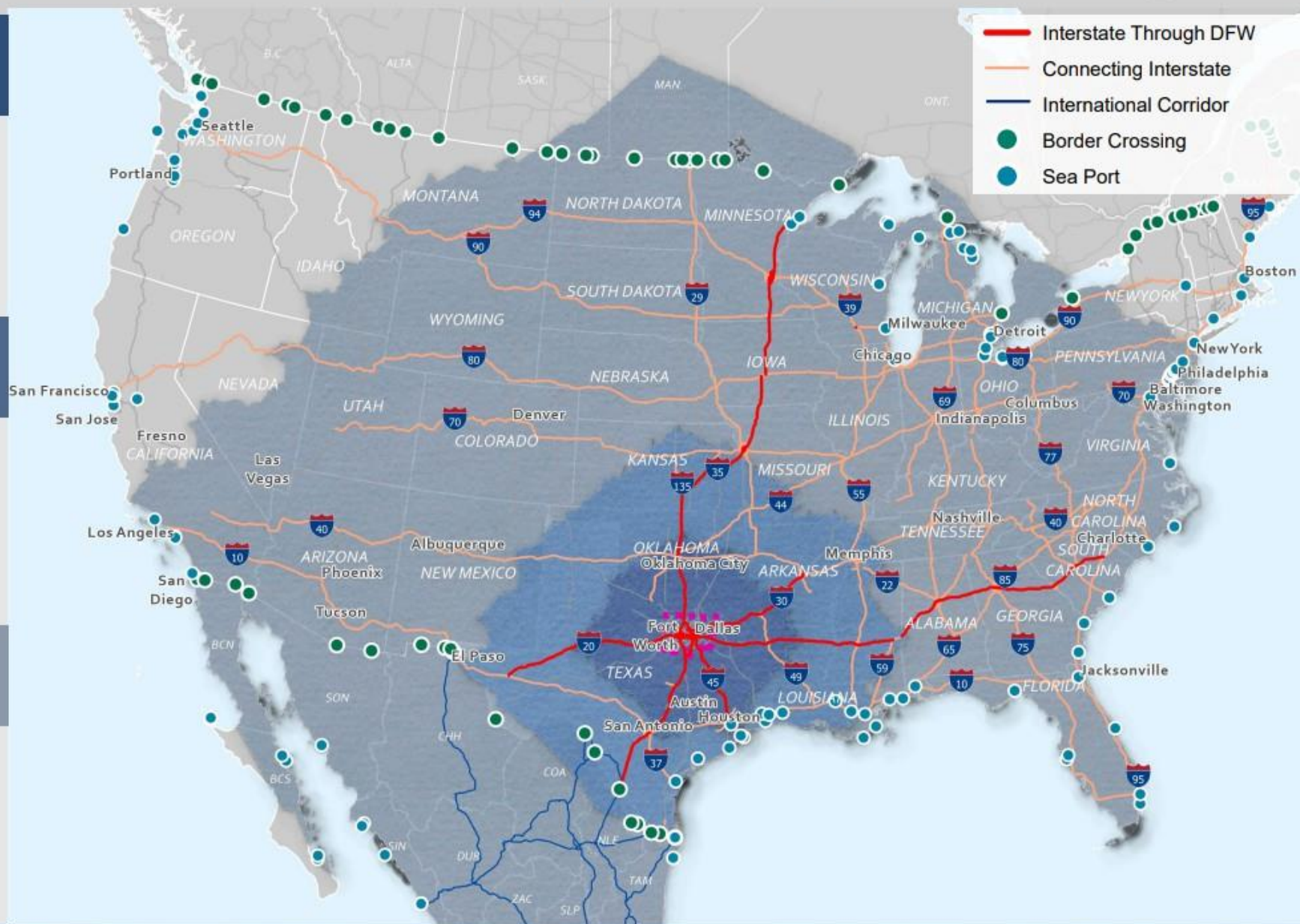
5 major metro areas
4 states

 8 hours

Metro areas in 5 states
12 truck border crossings
16 container port terminals

 24 hours

77% of US Urbanized Areas
29 Mexican States
3 Canadian Provinces

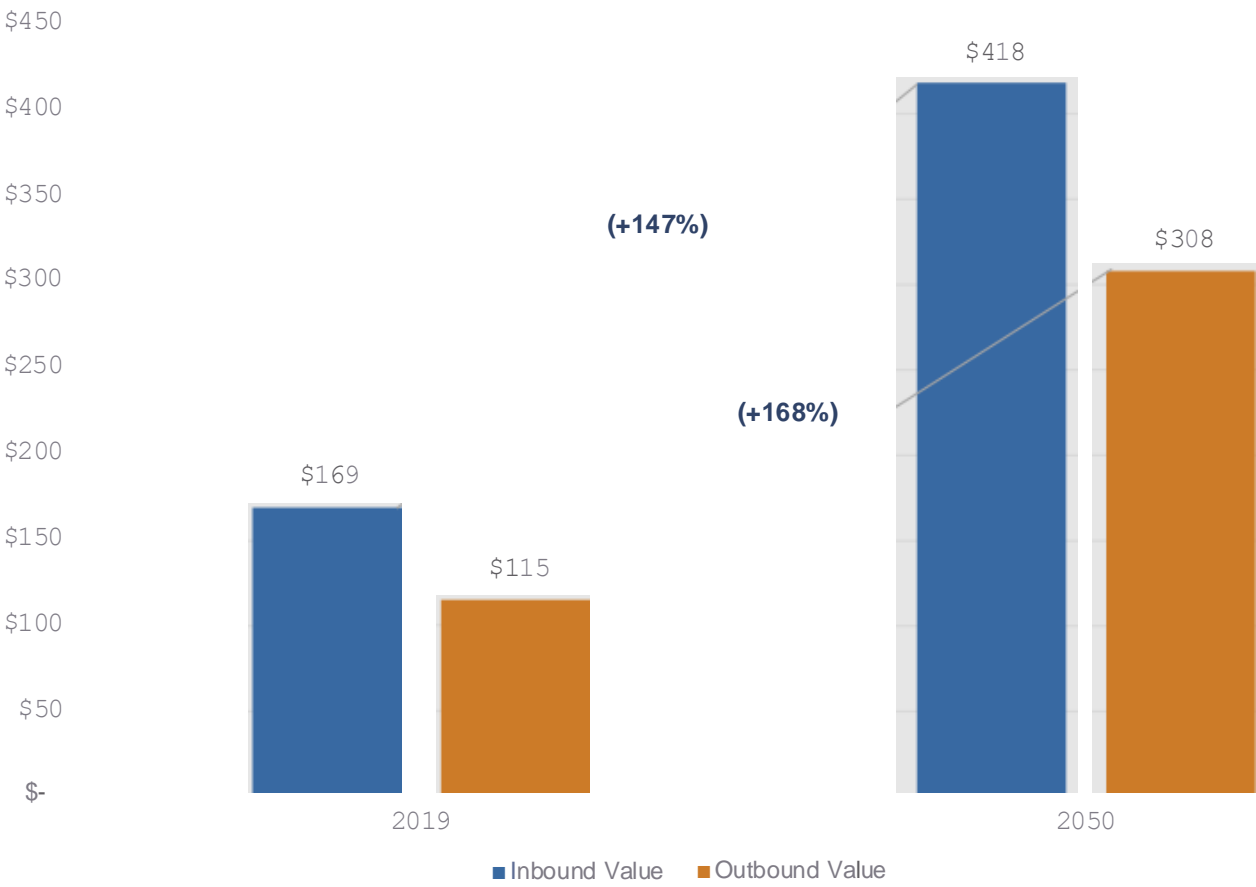


Growth Potential of the Southern Dallas Inland Port Area

The Inland Port area
employs over **30,000**

30% of employers are in manufacturing and **52% in distribution**

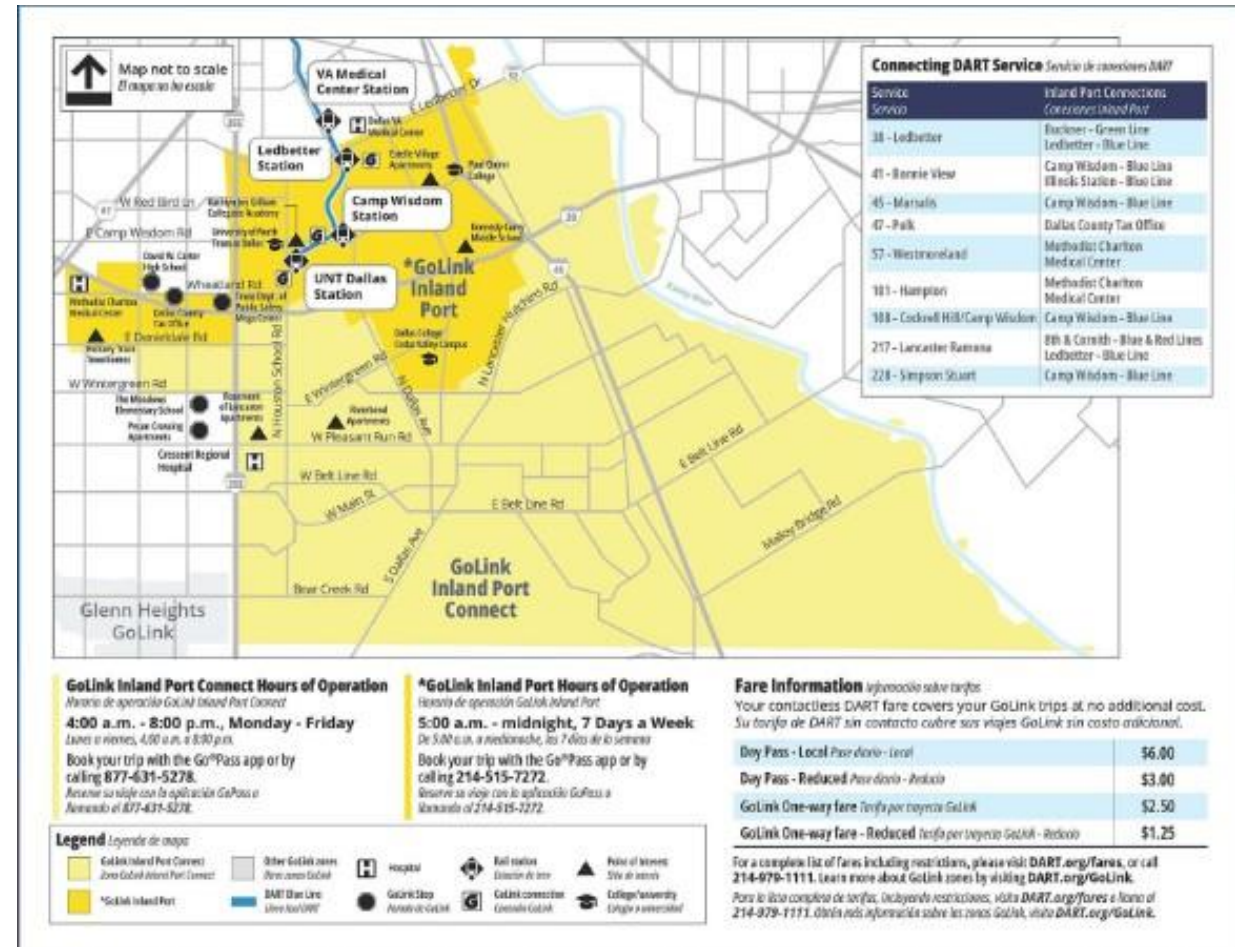
The value of Dallas County inbound and outbound commodity flows is expected to **grow by \$248B** and **\$193B**, respectively



DALLAS COUNTY INLAND PORT

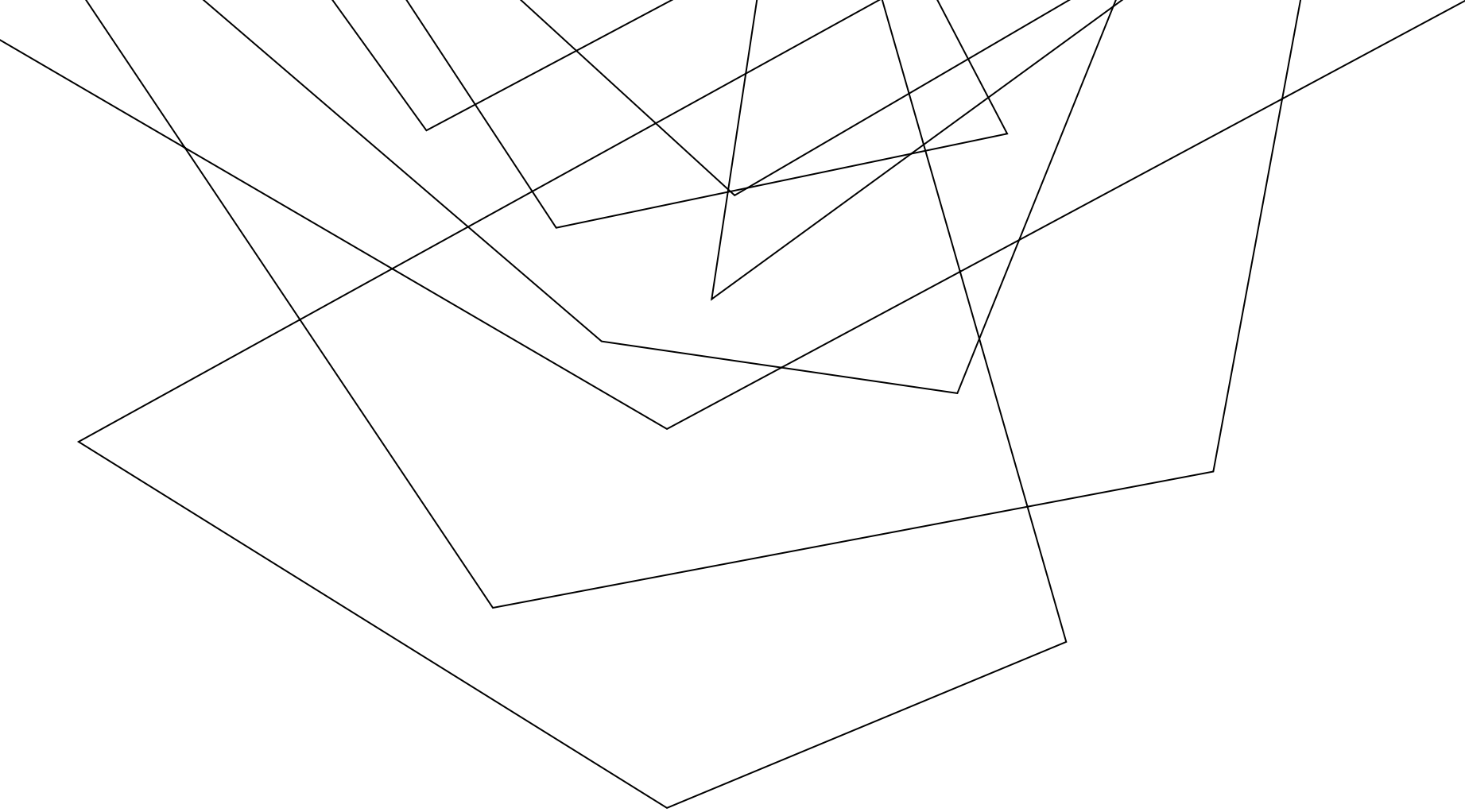
UNIQUE QUALITIES

- Made Up of Five Cities
- Individual Developer Driven
- No Port Authority or Overarching Strategic Team
- Workforce On-Demand Transportation for 120 Sq. Miles



CURRENT INFRASTRUCTURE PROJECTS

- 2012 Southern Dallas County Infrastructure Analysis
- 2021 \$12.8M RAISE grant
- 2024 \$25M RAISE grant for road expansion
- DCIP Flood Protection Planning Study
- Loop 9



IPTMA AND LGC UPDATE

August 2024

RECAP LGC CREATION

RECAP

- Dallas County and the Cities of Balch Springs, Mesquite and Wilmer are the initial incorporators
- Cities of Cedar Hill, DeSoto, Duncanville and Hutchins have expressed desire to join the LGC
- NCTCOG has authorized \$1.8M to facilitate the establishment of a Local Government Corporation (LGC)
- The LGC is designed to support economic development, housing, and transportation needs within the Dallas County Inland Port
 - LGC will encourage investments through grants and public/private partnerships
 - LGC will update Inland Port community on transportation and infrastructure projects
- Funding will cover first three years of LGC costs. Local partners will be responsible for identifying sustainable funding after that time
 - Funding will cover the necessary study and coordination to develop a long-term finance plan as well as clearly defining mission and goals of LGC

See Appendix for full list of NCTCOG funding in the Dallas County Inland Port

UPDATE LGC CREATION

LGC FORMATION

- Still waiting for State approval of LGC Application and Certificate of Formation
- Meeting planned with Michael Morris and Commissioner Price in September

GRANT ACTIVITIES

- The following grant applications were not led by the IPTMA/LGC, but they serve as an example of LGC coordination role in the future:
 - Clean Ports Grant – Perform emissions inventory, assess the daily effects in real-time and engage with the community. Grant led by City of Wilmer
 - SMART Grant – Integrate Urban Air Mobility Technologies in the Inland Port Multimodal Freight Transportation system. Grant led by City of Wilmer and City of Lancaster
- For existing grants (e.g., RAISE 2024 grant) the LCG will play the role of communicating project status with the Inland Port community, both business and residential

LGC CREATION UPDATE (CONTINUED)

INLAND PORT EXPOSURE

- We are making stronger connections with various federal staff members
 - Provided an Inland Port tour for Policy staff for the US Senate Committee on Commerce, Science and Transportation (Cruz is ranking committee member)
 - Provided an abbreviated Inland Port tour for Senator Cornyn's staff
 - Presented at TxDOT Freight Advisory Committee
- These stronger connections are leading to greater support for the Inland Port overall
 - Grant assistance, ability to lobby, data assistance, etc.



Commissioner John Wiley Price



Phone
[214-653-6671](tel:214-653-6671)



Email
district3@dallascounty.org



Website
www.dallascounty.org



THANK YOU!