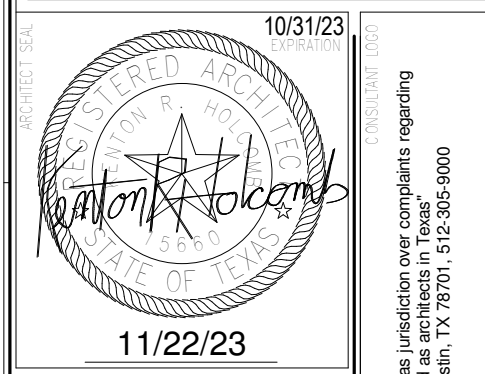
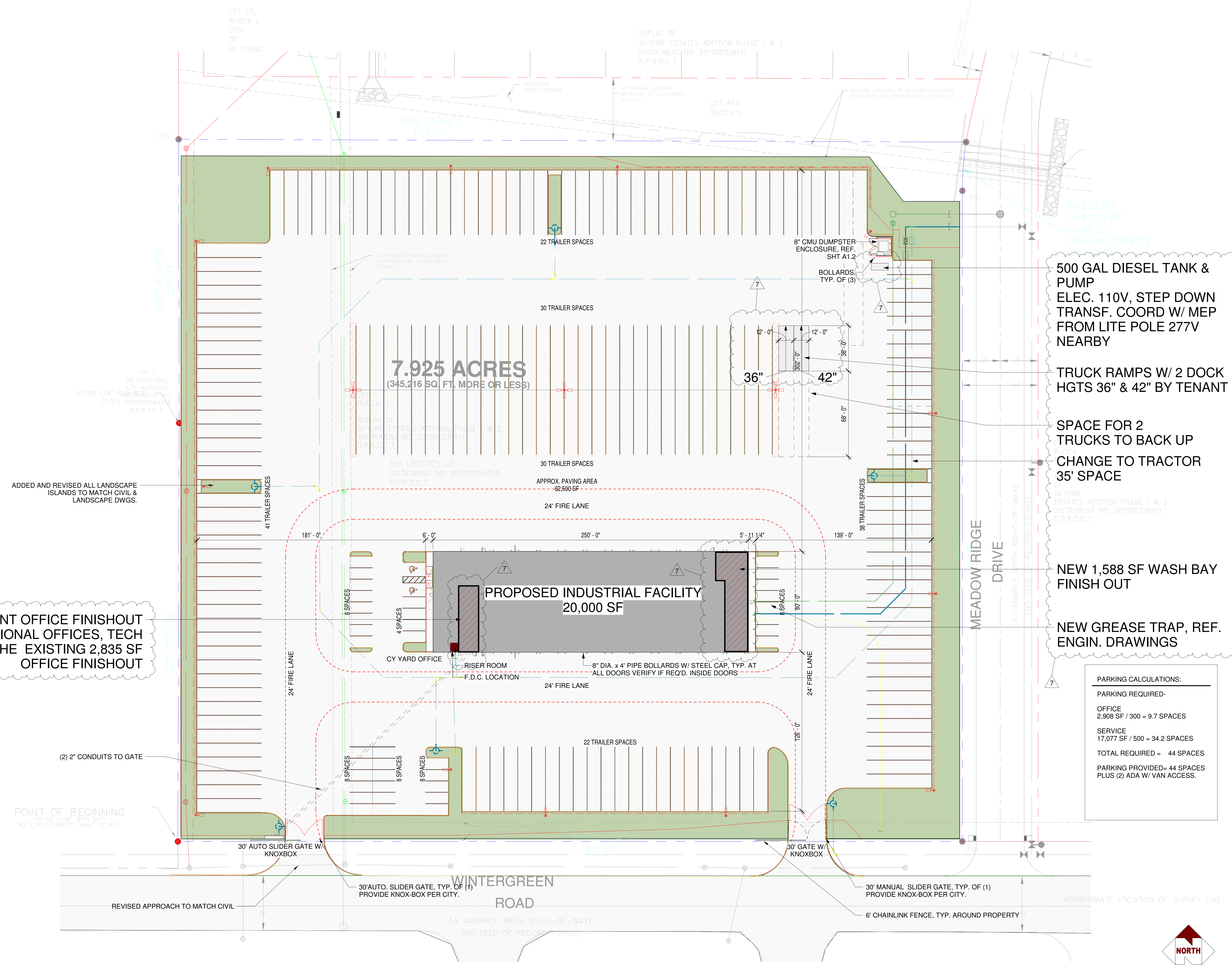




11880 Younger Ct., Ste. A
Azle, Texas 76020
817-905-6991



11/22/23
STATE BOARD OF ARCHITECTURE
The State Board of Architectural Examiners has pronounced the compliance of the
TBM# Address: 550 Guadalupe St., Austin, TX 78701, 512.361.9500



NEW 827 SF TENANT OFFICE FINISHOUT
ALTERATION W/ ADDITIONAL OFFICES, TECH
BREAK & LOCKER IN THE EXISTING 2,835 SF
OFFICE FINISHOUT

500 GAL DIESEL TANK & PUMP
ELEC. 110V, STEP DOWN
TRANSF. COORD W/ MEP
FROM LITE POLE 277V
NEARBY

TRUCK RAMPS W/ 2 DOCK
HGTS 36" & 42" BY TENANT

SPACE FOR 2
TRUCKS TO BACK UP
CHANGE TO TRACTOR
35' SPACE

NEW 1,588 SF WASH BAY
FINISH OUT

NEW GREASE TRAP, REF.
ENGIN. DRAWINGS

PARKING CALCULATIONS:

PARKING REQUIRED-	
OFFICE	2,908 SF / 300 = 9.7 SPACES
SERVICE	17,077 SF / 500 = 34.2 SPACES
TOTAL REQUIRED =	44 SPACES
PARKING PROVIDED =	44 SPACES
PLUS (2) ADA W/ VAN ACCESS.	

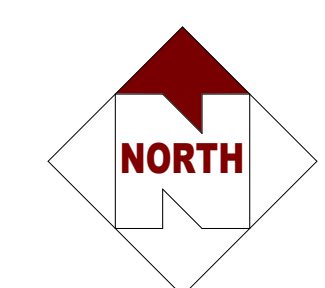
Revision Schedule

NO.	DATE	REVISION DESCRIPTION
1	11/22/23	REVISIONS FOR A NEW TENANT II

DLH 10 DEVELOPMENT

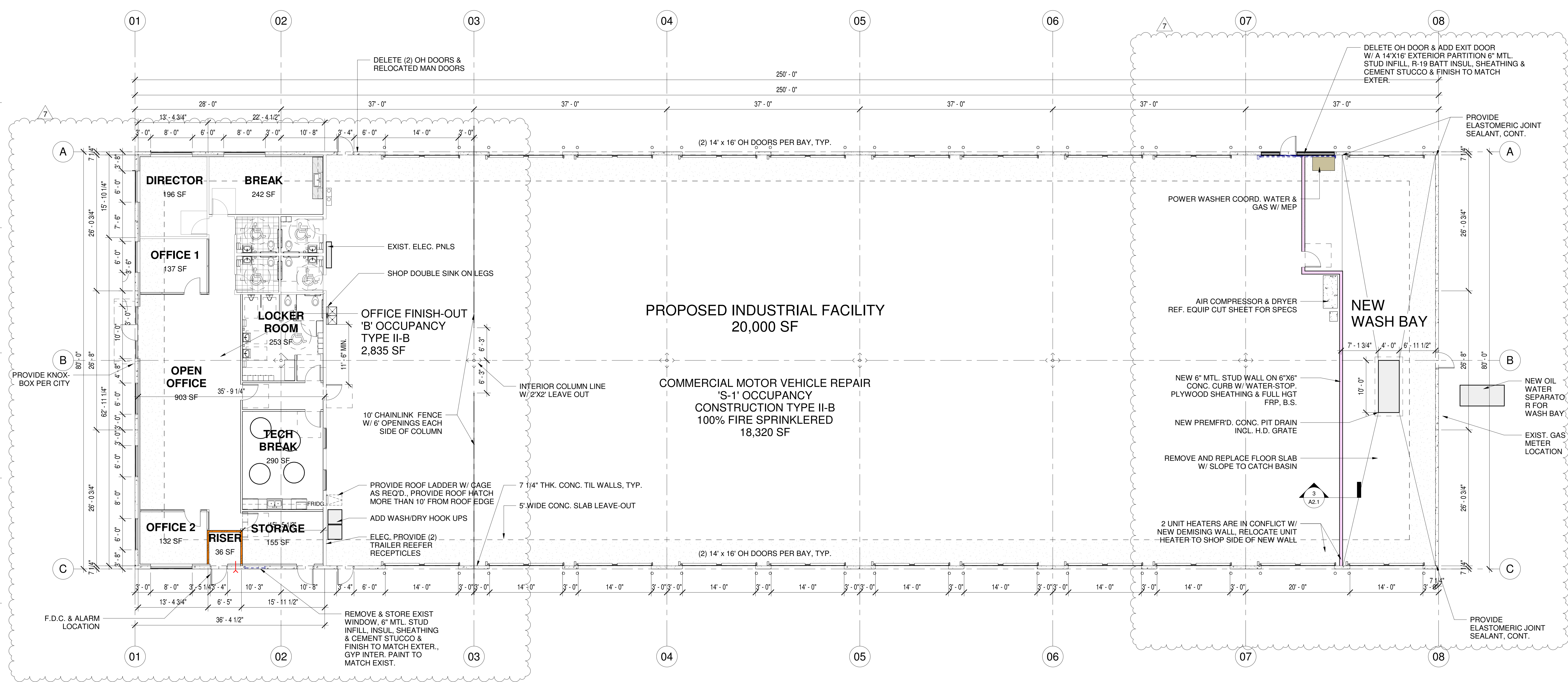
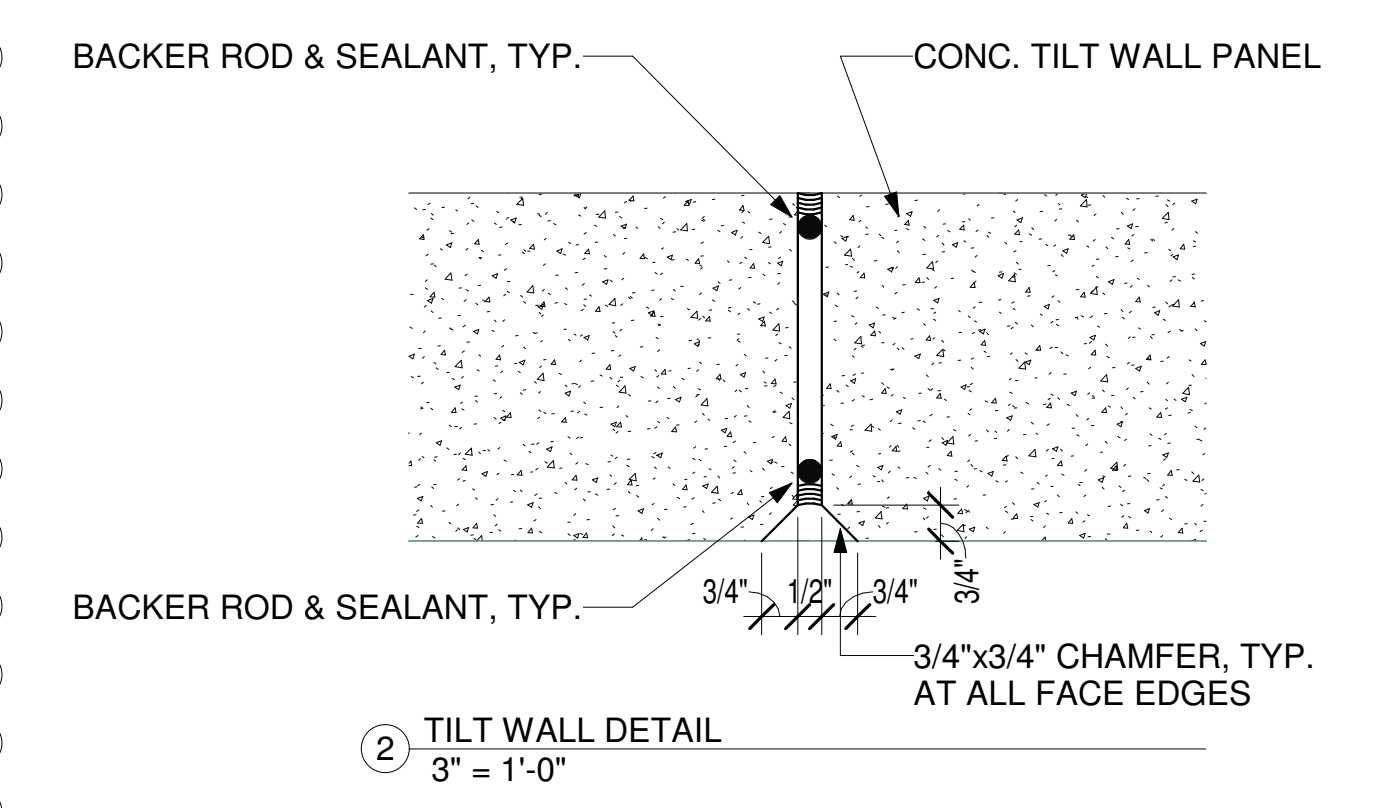
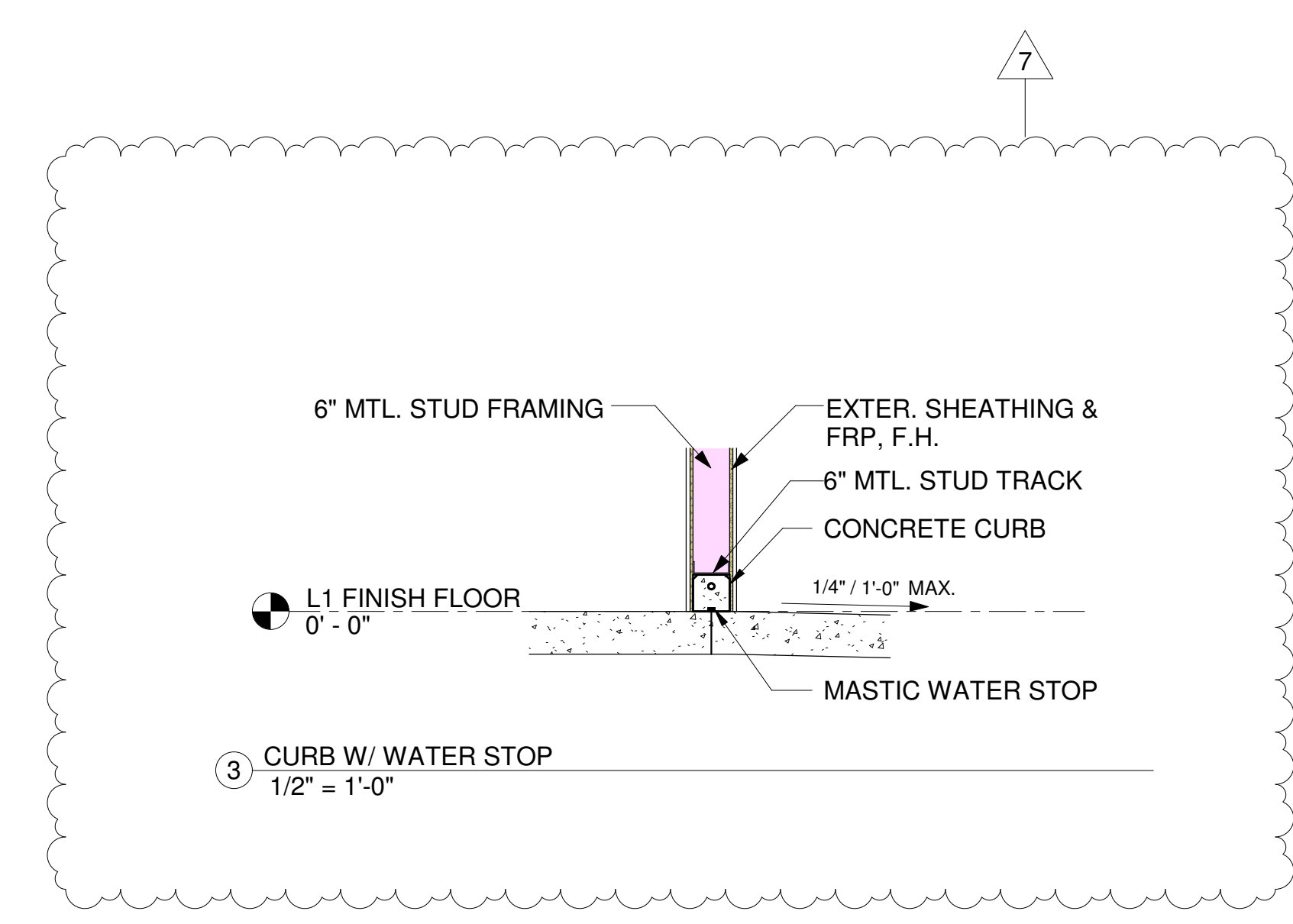
1 Meadow Ridge Drive, Hutchins, TX
TENANT PERMIT ADDENDUM II

1 SITE PLAN
1" = 30'-0"



ARCHITECTURAL SITE
PLAN

CONSTRUCTION DRAWINGS
A1.1



1 FLOOR PLAN - OVERALL
1/8" = 1'-0"

Revision Schedule

Rev.	Description
1	ISSUED FOR PERMIT
2	REVISIONS FOR A NEW TENANT

DLH 10 DEVELOPMENT
1 Meadow Ridge Drive, Hutchins, TX
TENANT PERMIT ADDENDUM II

FLOOR PLAN - OVERALL
CONSTRUCTION DRAWINGS
A2.1
Date: 11/22/23
By: [Signature]

