

DATE: August 17, 2023; 10:45 am – 12 noon

WORK IN PROGRESS: Cutting out of existing mortar joints

PRESENT AT SITE: Mike Madone/Mountain Masonry; Tim and Kris Hoehn/HAPC

DISTRIBUTION: All present; Carl Young, Kim Trujillo/Huerfano County; Danielle Lewon/SHF; Donald Harvey/ANA; Kate McCoy/CPI

NOTES/OBSERVATIONS:

1. The cutting out and repointing of mortar joints is in progress. Most of the joints from the top of the walls to the second floor window sills have been repointed. (Re: Photo #6.)
2. On the south wall at the second floor window, the stones at the arched head have been replaced along with the stones at the west jamb. Backer rod, if required, and sealant will be used to fill the joint between the stone and the brick mould. The steel plate above the arch will remain in place; it may have been installed to serve as support for the arch below when the gutter was leaking, causing damage to the stone. (See Photo #1.)

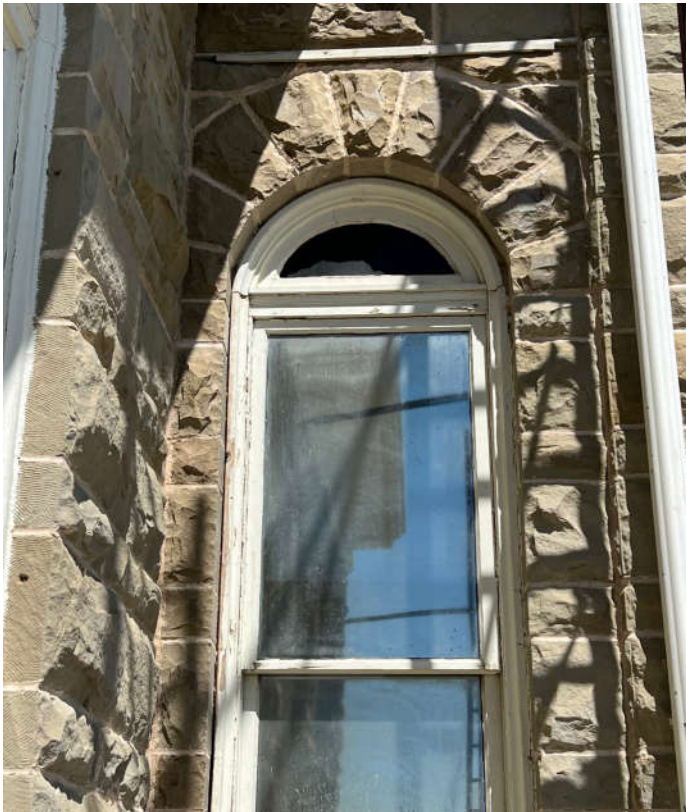


Photo #1: Replacement stone was laid at the arched head and west jamb of this second floor south facing window.

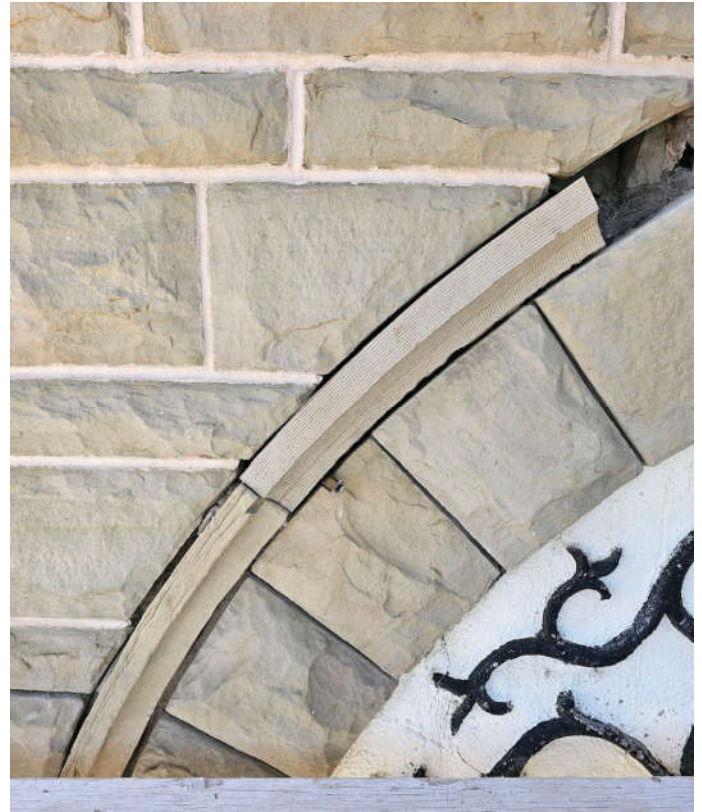


Photo #2: A replacement piece of radiused stone moulding above the plaster sign was fabricated by Mountain Masonry. (Photo Source: Mountain Masonry)

3. On the north wall at the second floor window, the arched brick mould had fallen off previously. A large cavity between the window frame and stone was packed with mortar. The brick mould needs to

be replaced; Mike has a source (carpenter) for fabricating replacement wood moulding in Canon City. A request for the use of contingency will be made for this work.



Photo #3: This course of stone, which includes lintels above the window and door openings on the tower's second floor, will be retooled rather than refaced to avoid damage to the plaster sign.

Photo #4: The decorative stone moulding and the small stones below the window sill are eroded. They will be replaced.

4. Now that the scaffolding is erected, close-up views of the stone condition at the south side of the east wall and tower were available. The following observations and decisions were made:
 - a. The string course of projecting stone, located below the second floor windows, was called to be refaced. Most of the existing stones have been removed and will be replaced. (Re: Photo #5.) Mike is waiting for the next load of stone, which will include smaller stones for this use.
 - b. At the tower's east face, second floor, there is a crack in the stone at the top of the north jamb of the northern window. The crack was not called out on the drawings, but pins were specified to be installed above and below the stone at the mortar joints, which will be carried out.
 - c. The course of stone at the tower's east face, located immediately below the decorative plaster sign, was specified to be refaced; a deep reface would be required, given their function as window and door lintels. Concerns were raised about disturbing the plaster sign, which has wood lath as its backup. To avoid damage to the plaster, these stones will be retooled instead, followed by the application of a breathable siloxane repellent, specified in the Project Manual. (Re: Photo #3.) The specifications also call for stones with skyward faces to be pointed with a non-staining silicone sealant.
 - d. Two stones that form part of the arch above the plaster sign were called to be replaced. They are in good condition and will be retained.
 - e. The decorative stone moulding that wraps the top of the stone arch above the plaster sign was found to be in poor condition; more stones require replacement than what was called out on the drawings. Consequently, all of the stones will be replaced. Mike had a replacement stone on site that he made; he placed it in the arch following the site visit. (Re: Photo #2.) The small, eroded stones below the third floor center window will also be replaced. (Re: Photo #4.)

5. The cracks in the plaster sign will be repaired; it was agreed that repairs should also be made to the existing letters because some have eroded and need minor touch-up. Following the completion of the repairs, the sign will be cleaned and then repainted in colors to match the existing colors.



Photo #5: Most of the existing stones that form the projecting string course below the second floor windows have been removed. They will be replaced in-kind.



Photo #6: Repointing of the mortar joints is underway, with most joints repointed from the top of the walls to the second floor window sills.

End of Field Report No. Three