

RESOLUTION

NO. 23 - 33

**THE BOARD OF COUNTY COMMISSIONERS
OF HUERFANO COUNTY, COLORADO**

**A RESOLUTION ADOPTING REVISED COMMISSIONER DISTRICTS
FOLLOWING THE 2020 CENSUS**

WHEREAS, C.R.S. 30-10-306 requires that each county in the State of Colorado be divided into three (3) compact districts by the Board of County Commissioners; and,

WHEREAS, C.R.S. 30-10-306(4) requires that after each federal census, counties must review their commissioner district boundaries to ensure that districts remain as nearly equal in population as possible based upon said census data; and,

WHEREAS, C.R.S. 30-10-306(4) specifies that there should be no more than a 5% difference between the most populous and the least populous district in each county, at the time such district boundaries are adopted; and,

WHEREAS, after a review of the 2020 Census Data, the Board of County Commissioners determined that redistricting is required as the largest district was District 2 with 2175 people and District 3 was the smallest with 1685, a deviation of approximately 25%; and,

WHEREAS, the Board of County Commissioners held a public hearing during their regular meeting on May 9, 2023 at 10 to receive public comment on four (4) draft maps prepared by County Staff; and

WHEREAS, after the conduct of the public hearing the Board of County Commissioners gave direction on the development of a final map for adoption no sooner than thirty (30) days after the hearing; and

WHEREAS, the Board of County Commissioners has reviewed the final map presented by staff and desires that this map be adopted as the new boundaries of County Commissioner Districts.

NOW, THEREFORE, BE IT RESOLVED by the Board of County Commissioners of Huerfano County, Colorado that effective upon the date of the adoption of this resolution the Huerfano County Commissioner Districts are hereby revised to the following:

County Commissioner District 1

Beginning at a point where County Road 340 (aka Bear Creek Road) and US HWY 160 West (aka 7th Street) intersect,

Thence East following the centerline of US HWY 160 W approximately 0.1 miles until intersection with Birch Avenue,

Thence North following the centerline of Birch Avenue approximately 0.04 miles until the intersection of Birch Avenue and 6th St,

Thence East following the centerline of 6th Street approximately 0.1 miles until the intersection of 6th Street and Ash Ave,

Thence North following the centerline of Ash Avenue approximately 0.03 miles until the intersection of Ash Avenue and 6th Street,

Thence East following the centerline of 6th Street approximately 0.56 miles until the intersection with 6th Street and Hendren Avenue,

Thence North following the centerline of Hendren Avenue for approximately 0.07 miles until the intersection of Hendren Avenue and 5th Street,

Thence East following the centerline of 5th Street for approximately 0.28 miles until the intersection of 5th Street and Russell Avenue,

Thence North following the centerline of Russell Avenue for approximately 0.2 miles until the intersection of Russell Avenue and Kansas Avenue,

Thence West following the centerline of Kansas Avenue for approximately 0.1 miles until the intersection of Kansas Avenue and US Interstate 25 Business loop (AKA Main Street),

Thence North following the centerline of US Interstate 25 Business loop (AKA Main Street) approximately 2.1 miles until the intersection US Interstate 25 Business loop and US Interstate 25,

Thence North following the centerline of US Interstate 25 approximately 16.66 miles until the intersection with US Interstate 25 and the Huerfano County Border,

Thence West, North West, South West and East following the Huerfano County Border to the intersection with US HWY 160 W,

Thence East following US HWY 160 W approximately 11.9 miles until the intersection of US HWY 160 W and County Road 520,

Thence North following the centerline of County Road 520 approximately 5.98 miles until the intersection of County Road 520 and County Road 520.2 (aka Stonewall Drive),

Thence East, North and then East following the centerline of an unnamed road for approximately 2.18 miles until the intersection with the unnamed road and County Road 521.1,

Thence North following the centerline of County Road 521.1 for approximately 1.77 miles until the intersection of County Road 521.1 and County Road 521,

Thence East following the centerline of County Road 521 for approximately 1.47 miles until the intersection of County Road 521 and County Road 526.2,

Thence South West, South East, East, North East and East following the centerline of 526.2 for approximately 6.92 miles until the intersection of Cello Azul Drive,

Thence North East following the centerline of Cello Azul Drive approximately 0.19 miles until the intersection of Cello Azul Drive and Monte Negro Drive,

Thence South and South East following the centerline of Monte Negro Drive for approximately 0.35 miles until the intersection of Monte Negro Drive and County Road 504,

Thence South following the centerline of County Road 504 for approximately 0.87 miles until the intersection with County Road 504 and Culebra Branch Road,

Thence West and South West following the centerline of Culebra Branch Road approximately 0.73 miles until the intersection with Culebra Branch Road and La Deora Road,

Thence South and East following the centerline of La Deora Road for approximately 1.66 miles until the intersection of La Deora Road and County Road 504,

Thence South following the centerline of County Road 504 for approximately 0.95 miles until the intersection of County Road 504 and San Isabel Blvd,

Thence West following the centerline of San Isabel Blvd for approximately 0.14 miles until the intersection of San Isabel Blvd and Trinch Drive,

Thence South following the centerline of Trinch Drive for approximately 0.06 miles until the intersection of Trinch Drive and Creek Park Road,

Thence East following the centerline of Creek Park Road for approximately 0.13 miles until the intersection of Creek Park Road and County Road 504,

Thence South following the centerline of County Road 504 for approximately 0.26 miles until the intersection of County Road 504 and Club Drive,

Thence West and South West along the centerline of Club Drive for approximately 0.14 miles,

Thence N 90° 0' 0" W 0.08 miles until the intersection with west side of Section 23 of Township 28 South Range 70 West,

Thence South along the West side of Section 23 of Township 28 South Range 70 West approximately 0.3 miles until the intersection with US HWY 160 W,

Thence East along the centerline of US HWY 160 W for approximately 4.37 miles until Point of Beginning.

County Commissioner District 2

Beginning at a point where County Road 340 (aka Bear Creek Road) and US HWY 160 West (aka 7th Street) intersect,

Thence South, South West following the center of County Road 340 for approximately 15.45 miles until intersection of County Road 340.2,

Thence South following the center of County Road 340.2 for approximately 0.49 miles until the intersection with the North line of Section 20 of Township 30 South Range 70 West,

Thence West along the North line of Section 20 of Township 30 South Range 70 West approximately 0.26 miles to the North West corner of Section 20 of Township 30 South Range 70 West,

Thence South along the Western border of Sections 20, 29 and 32 of Township 30 South Range 70 West for approximately 2.28 miles to the Huerfano County Border,

Thence South West and North following the Huerfano County Border until the intersection with the centerline of US HWY 160 W,

Thence East following US HWY 160 W approximately 11.9 miles until the intersection of US HWY 160 W and County Road 520,

Thence North following the centerline of County Road 520 approximately 5.98 miles until the intersection of County Road 520 and County Road 520.2 (aka Stonewall Drive),

Thence East, North and then East following the centerline of an unnamed road for approximately 2.18 miles until the intersection with the unnamed road and County Road 521.1,

Thence North following the centerline of County Road 521.1 for approximately 1.77 miles until the intersection of County Road 521.1 and County Road 521,

Thence East following the centerline of County Road 521 for approximately 1.47 miles until the intersection of County Road 521 and County Road 526.2,

Thence South West, South East, North East and East following the centerline of 526.2 for approximately 6.92 miles until the intersection of Cello Azul Drive,

Thence North East following the centerline of Cello Azul Drive approximately 0.19 miles until the intersection of Cello Azul Drive and Monte Negro Drive,

Thence South and South East following the centerline of Monte Negro Drive for approximately 0.35 miles until the intersection of Monte Negro Drive and County Road 504,

Thence South following the centerline of County Road 504 for approximately 0.87 miles until the intersection with County Road 504 and Culebra Branch Road,

Thence West and South West following the centerline of Culebra Branch Road approximately 0.73 miles until the intersection with Culebra Branch Road and La Deora Road,

Thence South and East following the centerline of La Deora Road for approximately 1.66 miles until the intersection of La Deora Road and County Road 504,

Thence South following the centerline of County Road 504 for approximately 0.95 miles until the intersection of County Road 504 and San Isabel Blvd,

Thence West following the centerline of San Isabel Blvd for approximately 0.14 miles until the intersection of San Isabel Blvd and Trinch Drive,

Thence South following the centerline of Trinch Drive for approximately 0.06 miles until the intersection of Trinch Drive and Creek Park Road,

Thence East following the centerline of Creek Park Road for approximately 0.13 miles until the intersection of Creek Park Road and County Road 504,

Thence South following the centerline of County Road 504 for approximately 0.26 miles until the intersection of County Road 504 and Club Drive,

Thence West and South West along the centerline of Club Drive for approximately 0.14 miles,

Thence N 90° 0' 0" W 0.08 miles until the intersection with west side of Section 23 of Township 28 South Range 70 West,

Thence South along the West side of Section 23 of Township 28 South Range 70 West approximately 0.3 miles until the intersection with US HWY 160 W,

Thence East along the centerline of US HWY 160 W for approximately 4.37 miles until Point of Beginning.

County Commissioner District 3

Beginning at a point where County Road 340 (aka Bear Creek Road) and US HWY 160 West (aka 7th Street) intersect,

Thence South and South West following the center of County Road 340 for approximately 15.45 miles until intersection of County Road 340.2,

Thence South following the center of County Road 340.2 for approximately 0.49 miles until the intersection with the North line of Section 20 of Township 30 South Range 70 West,

Thence West along the North line of Section 20 of Township 30 South Range 70 West approximately 0.26 miles to the North West corner of Section 20 of Township 30 South Range 70 West,

Thence South along the Western border of Sections 20, 29 and 32 of Township 30 South Range 70 West for approximately 2.28 miles to the Huerfano County Border,

Thence East, North East, North West and then West following the Huerfano County Border until the intersection with the centerline of US Interstate 25,

Thence South following the centerline of US Interstate 25 approximately 16.66 miles until the intersection with US Interstate 25 Business loop,

Thence South following the centerline of US Interstate 25 Business loop approximately 2.1 miles until the intersection of Kansas Avenue and US Interstate 25 Business loop (AKA Main Street),

Thence East following the centerline of Kansas Avenue for approximately 0.1 miles until the intersection of Kansas Avenue and Russell Avenue,

Thence South following the centerline of Russell Avenue for approximately 0.2 miles until the intersection of Russell Avenue and 5th Street,

Thence West following the centerline of 5th Street for approximately 0.28 miles until the intersection of 5th Street and Hendren Avenue,

Thence South following the centerline of Hendren Avenue for approximately 0.07 miles until the intersection of Hendren Avenue and 6th Street,

Thence West following the centerline of 6th Street approximately 0.56 miles until the intersection with 6th Street and Ash Avenue,

Thence South following the centerline of Ash Avenue approximately 0.03 miles until the intersection of Ash Avenue and 6th Street,

Thence West following the centerline of 6th Street approximately 0.1 miles until the intersection of 6th Street and Birch Avenue,

Thence South following the centerline of Birch Avenue approximately 0.04 miles until the intersection of Birch Avenue and US HWY 160 W (aka 7th Street),

Thence West following the centerline of US HWY 160 W approximately 0.1 miles until the Point of Beginning.

BE IT FURTHER RESOLVED that these Commissioner Districts are described and illustrated in the “Final Exhibit” attached and incorporated by reference into this resolution.

INTRODUCED, READ, APPROVED AND ADOPTED ON THIS 27th day of JUNE 2023.



ATTEST:

County Clerk and Recorder and
Ex-Officio Clerk to said Board

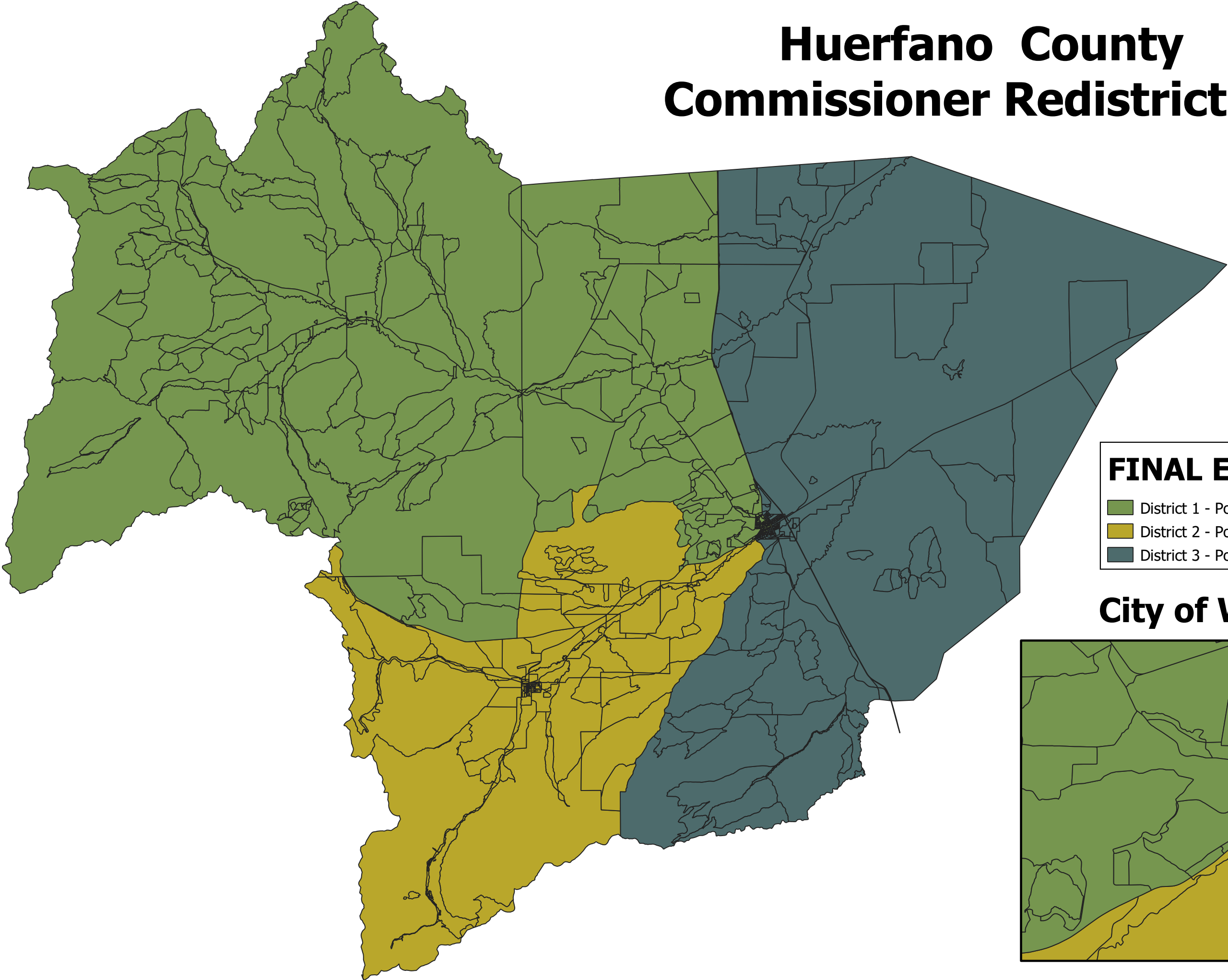
BOARD OF COUNTY COMMISSIONERS
OF HUERFANO COUNTY, COLORADO

BY _____
John Galusha, Chairman

Arica Andreatta, Commissioner

Karl Sporleder, Commissioner

Huerfano County Commissioner Redistricting



FINAL EXHIBIT

- District 1 - Population 1898
- District 2 - Population 1946
- District 3 - Population 1878

City of Walsenburg

