



## MEMORANDUM

---

**MEETING TYPE:** Board of County Commissioners

**MEETING DATE:** November 21, 2023

**ITEM NAME:** Technical Assistance for Lead and Copper Rule Revisions

**SUBMITTED BY:** Carl Young

**SUMMARY:** The Colorado Department of Public Health and Environment (CDPHE) has contracted with WSP and Sunrise Engineering, consulting firms, to help small water systems meet the lead service line inventory and replacement plan requirements outlined in the 2021 Lead and Copper Rule Revisions. These consultants are here to assist water systems who are requesting no cost technical assistance to meet the October 16, 2024, compliance deadline. In order to receive this assistance we need to submit a Contractor and Water System Service Agreement Form.

**RECOMMENDATION:** Motion to authorize the Administrator to sign and submit the Contractor and Water System Service Agreement for Lead and Copper Rule Technical Assistance.

**BACKGROUND:** See attached presentation.

**BOARD ACTION TAKEN:**

APPROVED

DENIED

OTHER

SIGNATURE OF THE CHAIR: \_\_\_\_\_

NOTES:

# Technical Assistance for Lead and Copper Rule Revisions (LCRR)



**COLORADO**  
Department of Public  
Health & Environment



**SUNRISE**  
ENGINEERING

# Housekeeping



**This meeting is being recorded.**



**Please keep your audio off unless you have been invited to come off mute to ask a question.**



**Please engage in the conversation, we want to hear what you have to say!**



**The Q&A feature can be used to ask questions, provide comments, or if seeking technical support with engaging in the Zoom session.**



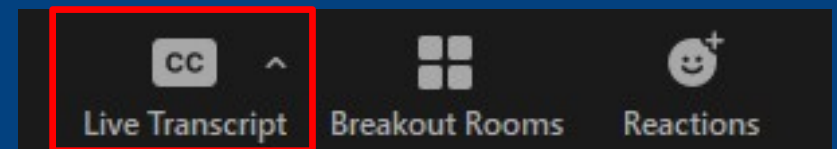
**COLORADO**  
Department of Public  
Health & Environment



**SUNRISE**  
ENGINEERING

# Housekeeping

- If you would like to speak when we open the floor to comments and questions, please put your question into the Q&A and/or raise your hand
- Closed Captioning will be available throughout the presentation through the “Live Transcript” feature

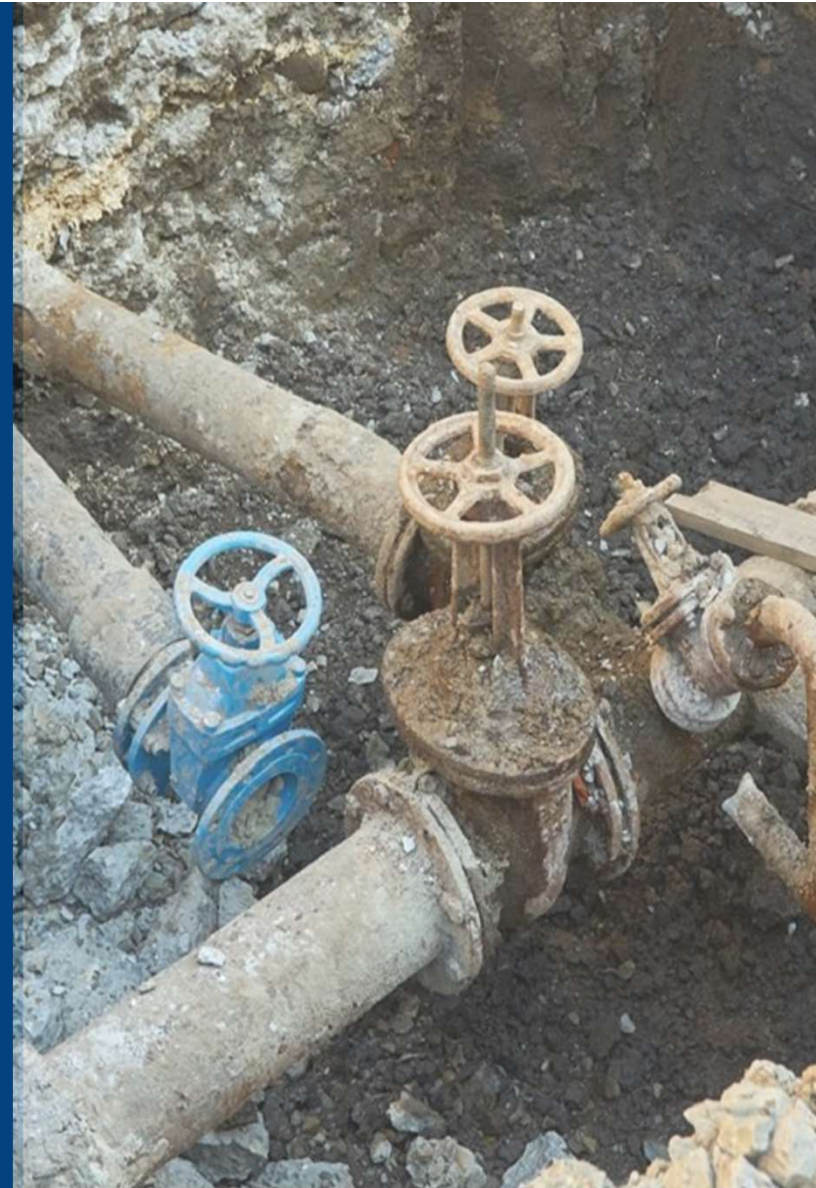


# Agenda




1. Meet the Team
2. Quick Overview-Lead and Copper Rule
3. Contracted Services Provided by CDPHE
4. How to sign up
5. Project Timeline
6. Next steps



**COLORADO**  
Department of Public  
Health & Environment



## MEET THE TEAM

 <p><b>Caroline Miller</b> Project Manager &amp; Central Region Lead</p>	 <p><b>Aaron Averett</b> West Region Lead</p>	 <p><b>Gabi Davis</b> East Region Lead</p>	 <p><b>Joshua Palmer</b> Outreach and Engagement Advisor</p>
---	--	--	---

We are here  
to make your  
lives **easier!**

## Our Goal

Ensure all water systems achieve compliance with the Lead and Copper Rule Revisions



# Quick Overview

## Lead and Copper Rule Revisions

For more information, please visit  
Colorado Department of Health and Environment  
Health Website:

<https://cdphe.colorado.gov/lcr>



### Lead Service Line Inventory and Non-Lead Service Line Inventory

All community and non-transient, non-community water systems must develop an inventory to identify the materials of service lines connected to the public water distribution system by **October 16, 2024**

### Lead Service Line Replacement Plan and Outreach

Water systems with lead, galvanized requiring replacement, or lead status unknown service lines must submit a lead service line replacement plan to the State by **October 16, 2024**. Additionally, water systems must make their lead service line inventory available to the public.

### Getting Consumers Involved

Water systems are encouraged to work with their customers to help them understand the importance of assisting with the service line identification process and the risks of lead in drinking water.



# Free Technical Assistance for Eligible Water Systems

Eligible water system = systems serving populations up to 15,000

Services include:

- Education regarding regulatory compliance requirements
- Collaboration to collect inventory records
- Developing inventory and gap assessment
- Public outreach plan and resources
- Confirmation activities (as needed)
- Finalize service line inventory and replacement plan
- Assist systems to submit their inventory and replacement plans





# Region Map and Leads



## West Region

- 27 counties
- Led by Aaron Averett



## Central Region

- 17 counties
- Led by Caroline Miller



## East Region

- 20 counties
- Led by Gabi Davis



TECHNICAL ASSISTANCE FOR LEAD AND COPPER RULE REVISIONS  
WEBINAR

Technical Assistance for Lead and Copper Rule Revisions



Contractor and Water System Service Agreement

The Colorado Department of Public Health and Environment (CDPHE) has contracted with WSP and Sunrise Engineering, consulting firms, to help small water systems meet the lead service line inventory and replacement plan requirements outlined in the 2021 Lead and Copper Rule Revisions. These consultants are here to assist water systems who are requesting no cost technical assistance to meet the October 16, 2024, compliance deadline. By filling out and submitting this form, your community or non-transient, non-community public water system agrees to work with the project team to reach compliance.

What is the principal county you serve?\*



# Service Agreement

## What is this for?

1. Informs CDPHE that you are engaging with us for services
2. Permission to view and access your records
3. Accountability between WSP/Sunrise and water systems to achieve compliance
4. Initial data gathering



<https://bit.ly/cdphesa>

# Collecting Records

## Details on your water system services lines

1. Your region lead will contact you
2. Discuss the availability of your records and develop a plan to collect
  - Records we collect - Paper, excel, download from a database, GIS
  - Data could include historical water quality reports, distribution system maps and any other existing data on lead service lines.
3. SharePoint link to upload electronic records
4. Onsite visits to help gather records



# Public Outreach Plan

We understand that public outreach will be critical to the success of the project, as the public is both a source of and consumer of the water service line inventory data.

- Templates have already been developed for public outreach which can be customized for the state and local water communities
  - Door Hangers
  - Mailers
  - Email
- Able to provide the public with self-service opportunities
  - Website
  - Hotline



Every water system in the country must perform a service line inventory that includes the line between the road and the customer's house or building.

#### TYPICAL SERVICE LINE



The community water system owns the service line that runs from the main water line to the property line. The customer owns the service line, which may include the valve and water meter, that runs from the property line into their house.



#### NOTICE:

Records show the water service line connecting the main drinking water line to your home could contain lead.

We are required to notify you of this possibility in accordance with Environmental Protection Agency (EPA) updates to the Lead and Copper Rule. Your community water system, after completing a comprehensive service line inventory within its service area, will create a sampling protocol and replacement plan to maintain compliance with the Rule.

Questions or Concerns?  
1-833-739-4633 or [insert water supplier email]

For more information visit:  
[insert water supplier website]

Updates about your community water system will be posted on the LeadRemovalInfo website under *What's Happening In My Community?*



# Public Online Education and Resources

**Contact for email & hotline**

Questions?  
1-833-739-4633  
[info@leadremoval.info](mailto:info@leadremoval.info)

## Navigating the Lead and Copper Rule

**Educational materials for the public**

The EPA revised rules surrounding lead service line identification and mitigation in December of 2021.

As a result, every water system in the country, regardless of how many lead service lines remain in use, must perform a service line materials inventory that includes the area between the road and the customer's house or building (area between the property boundary and the outside wall/foundation of the house or building).

LeadRemoval.info was created to help communities inventory, prioritize and remove lead service lines, all while keeping you informed and involved.

Are you a community water system seeking help with lead and copper rule compliance? Contact [Support@leadremoval.info](mailto:Support@leadremoval.info) to discuss your needs with an expert.

Questions or Concerns?  
1-833-739-4633 or [Info@LeadRemoval.Info](mailto:Info@LeadRemoval.Info)

[More About the New Lead & Copper Rule](#)

Questions? | 1-833-739-4633 | [info@leadremoval.info](mailto:info@leadremoval.info)

LeadRemoval.info

**Do I Have Lead Service Lines?**

Learn how to determine if you have lead pipes.

**What's Happening in My Community?**

Find your community water system status in the service line inventory and removal process.

**How Can I Get More Information?**

Find answers to frequently asked questions.

**Who Can Answer My Questions?**

Find resources and contacts to help you navigate the process.

**Updates specific to individual communities**

### Do I Have Lead Service Lines?

Homes built after 1989 are unlikely to have lead service lines. This survey helps determine the likelihood of having a lead service line. Communities throughout the US are currently creating lead service line inventories and are required to communicate with a property owner if a lead service line is present.

In which state do you live?\*

Please Select

In which city do you live?\*

Zip Code\*

Street Address\*

In which year was your dwelling built?\*

Please Select

**Which of the following situations apply to your property? (choose all that apply)**

On-site daycare

Children under the age of 14 live at this property

Individuals with weakened immune system/health conditions live at this property

**To your knowledge, was a lead service line between the curb or back of sidewalk and the building/home already replaced?**

Yes  No  Unsure

**If 'yes', was the service line replacement before 1989?**

Yes  No  Unsure

**Would you like to take a self-assessment to check your water service line materials?**

Yes  No

**Self-assessment & self-reporting tools**

Submit Reset

Privacy - Terms

# Public Up-to-date Community Information

## What's Happening in My Community?

LeadRemoval.info will continue to support new communities. Please check back if your state and city isn't listed.

Select your state: Colorado  
Select your county: -Select County  
Select your city: -Select City  
Display Status

View the project status for the community

Denver, Colorado – Denver County

**Current Status**

Step 1 - Conduct a Lead and Copper Service Line Inventory: The water system will create a baseline assessment, identifying where lead service lines are and what materials are being used in areas they are not.


**Other Information**

OtherInformation

**Resources**

- Lead in Drinking Water Fact Sheet
- Resource 1

**Lead Service Line Inventory Map**



Open map in a new window

Ability to view the service line inventory

\*Artificial data is being displayed

# Schedule

	Nov	Dec	Jan	Feb	Mar	Apr	May	Jun	Jul	Aug	Sept	Oct
<b>Task 1: Water System Engagement</b>	[Task 1: Water System Engagement - spans all months]											
• Regional Webinar Meetings	[Task 1: Water System Engagement - spans all months]											
• Service Agreements	[Task 1: Water System Engagement - spans all months]											
<b>Task 2: Inventory</b>	[Task 2: Inventory - spans all months]											
• Project start up	[Task 2: Inventory - spans all months]											
• Public outreach	[Task 2: Inventory - spans all months]											
• Review of existing records	[Task 2: Inventory - spans all months]											
• Identify & perform field testing	[Task 2: Inventory - spans all months]											
• Update GIS	[Task 2: Inventory - spans all months]											
• Report preparation	[Task 2: Inventory - spans all months]											
<b>Task 3: Replacement plan</b>	[Task 3: Replacement plan - spans all months]											
• Perform Equity based considerations	[Task 3: Replacement plan - spans all months]											
• Report preparation & submittal	[Task 3: Replacement plan - spans all months]											
<b>Task 4: Confirmation Activities (as needed)</b>	[Task 4: Confirmation Activities (as needed) - spans all months]											

 We are here today!

 EPA deadline 10/16/24

**TECHNICAL ASSISTANCE FOR LEAD AND COPPER RULE REVISIONS  
WEBINAR**

Technical Assistance for Lead and Copper Rule Revisions



**Contractor and Water System Service Agreement**

The Colorado Department of Public Health and Environment (CDPHE) has contracted with WSP and Sunrise Engineering, consulting firms, to help small water systems meet the lead service line inventory and replacement plan requirements outlined in the 2021 Lead and Copper Rule Revisions. These consultants are here to assist water systems who are requesting no cost technical assistance to meet the October 16, 2024, compliance deadline. By filling out and submitting this form, your community or non-transient, non-community public water system agrees to work with the project team to reach compliance.

What is the principal county you serve?\*



# How to Sign up

## Complete a Service Agreement

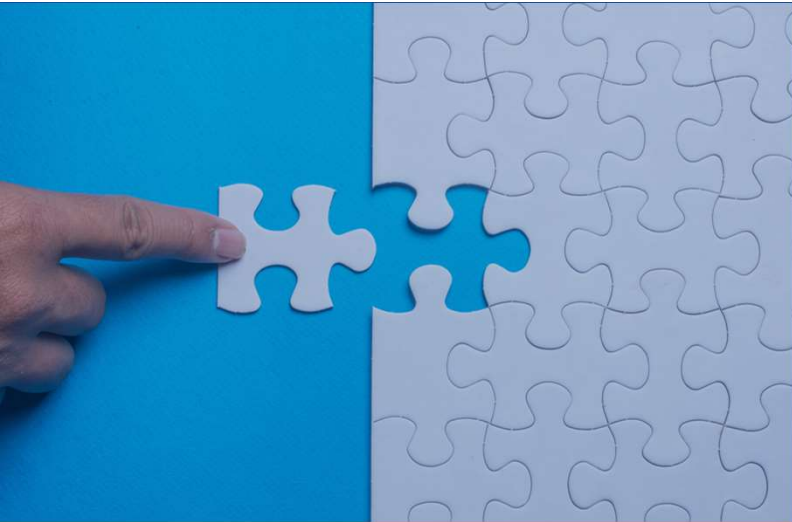
1. Submit a Service Agreement online

<https://bit.ly/cdpheesa>



2. Call us and we will be happy to help you!





## Next Steps

### Water Systems

- Education regarding resources
- Engagement and Service Agreement Completion
- Collaboration to collect records
- Develop Inventory and gap assessment
- Public Outreach Resources [LeadRemoval.info](http://LeadRemoval.info)
- Confirmation activities (as needed)
- Develop Replacement Plan
- Assist suppliers to submit their inventory and replacement plans by October 16th, 2024

TECHNICAL ASSISTANCE FOR LEAD AND COPPER RULE REVISIONS  
WEBINAR

# THANK YOU!

FOR JOINING US DURING TODAY'S WEBINAR

If you have any additional questions or would like to connect with your region lead, please reach out to:

- [Colorado@leadremoval.info](mailto:Colorado@leadremoval.info)
- **West Region - Aaron Averett: 435-292-8047**
- **Central Region - Caroline Miller: 303-244-8242**
- **East Region - Gabi Davis: 303-962-5557**

Complete the service agreement:

<https://bit.ly/cdpheesa>

