

BLUE SKY FARMS, LLP

A portion of Sections 22 & 23, Township 28 South, Range 67 West, 6th P.M.
County of Huerfano, State of Colorado

NW Cor.
E 1/2 NE 1/4
Section 22
Lat: 37°36'14.377" N
Long: 104°52'17.834" W

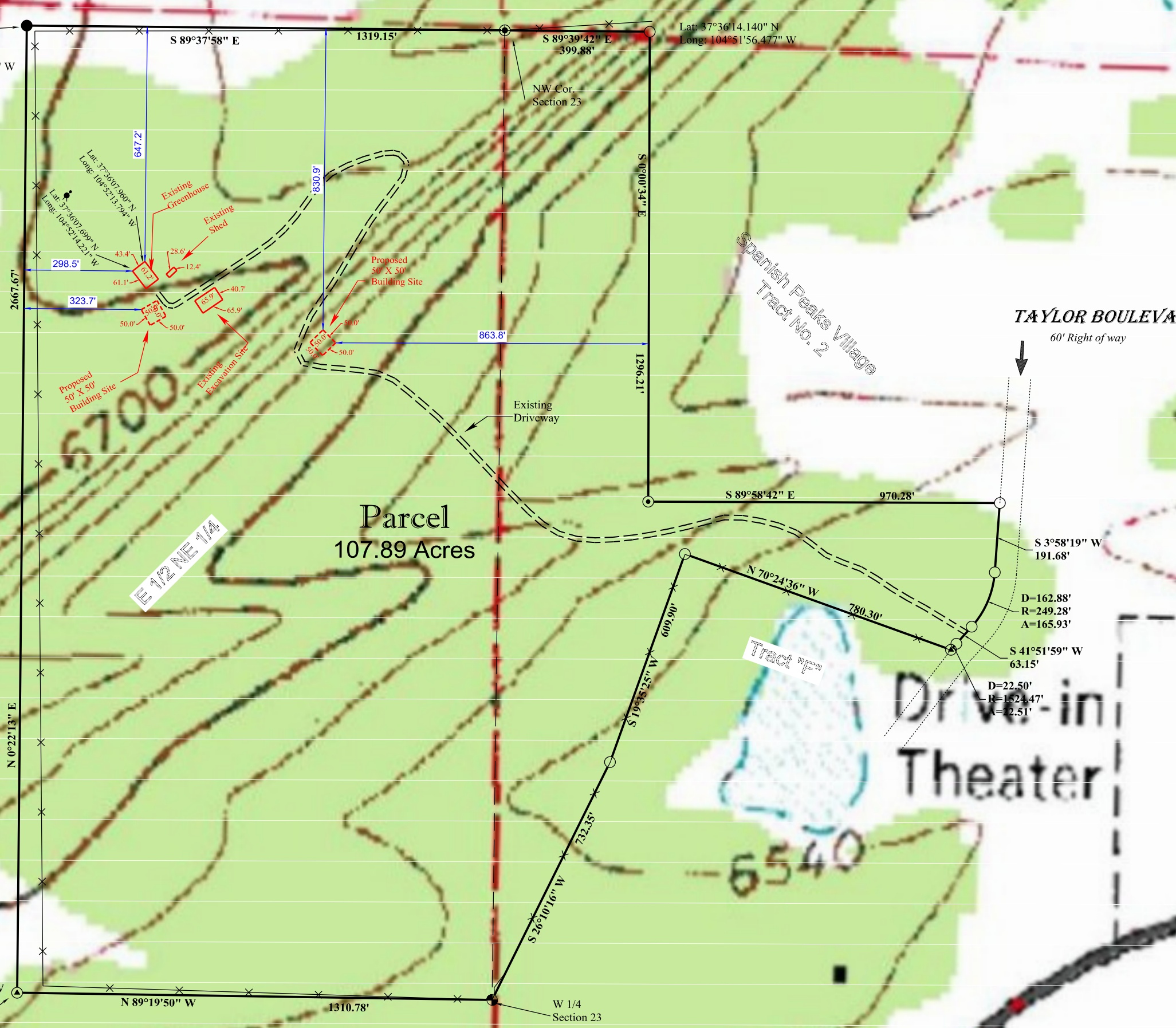
Lat: 37°36'14.140" N
Long: 104°51'56.477" W

NW Cor.
Section 23



0 200' 400'

Scale 1" = 200'



Lat: 37°35'48.007" N
Long: 104°52'18.286" W

SW Cor.
E 1/2 NE 1/4
Section 22

N 89°19'50" W

1310.78'

W 1/4
Section 23

Lat: 37°35'47.764" N
Long: 104°52'01.995" W

LEGEND

- FOUND 3/4" REBAR, WITH 2" ALUMINUM CAP, PLS 10895
- ⊙ FOUND 1/2" REBAR, WITH ALUMINUM CAP, PLS 10777
- ⊙ FOUND 1/2" REBAR, WITH YELLOW CAP, PLS (Illegible)
- ⊙ FOUND 1/2" REBAR, WITH YELLOW CAP, PLS 6128
- FOUND 1/2" REBAR, WITH RED CAP, PLS 10895
- FOUND 1/2" REBAR, NO CAP
- ⊕ WELL
- ✕ EXISTING FENCE LINE

BH&I LAND SURVEYING

P.O. Box 20399, Colorado City, CO 81019
Phone: 970-670-7722
Email: bh@bhlandsurveying.net

Scale 1" = 200' Date: 10/01/17 Drawn By: W...