
Monthly Report March/April 2024



Road & Bridge
Dustin Hribar

Road Maintenance

Throughout the county we have been trying to keep up with all the constant changes in the road conditions. From one day the road being too dry, to the next that it's too muddy to drive down. We are out every day trying to keep up with all the maintenance that needs done.

Projects

One of the bigger projects that was completed in the past couple months, was the cleanup of the transfer station. This project took some time to complete with the help of a lot of different employees. From the persistent hauling of the trash day in and out, to the help moving metal to the west side of the lot.



I wish I would have had a picture to add from what it looked like before the cleanup began. It would have been a good comparison to show the amount of work that went into this project.

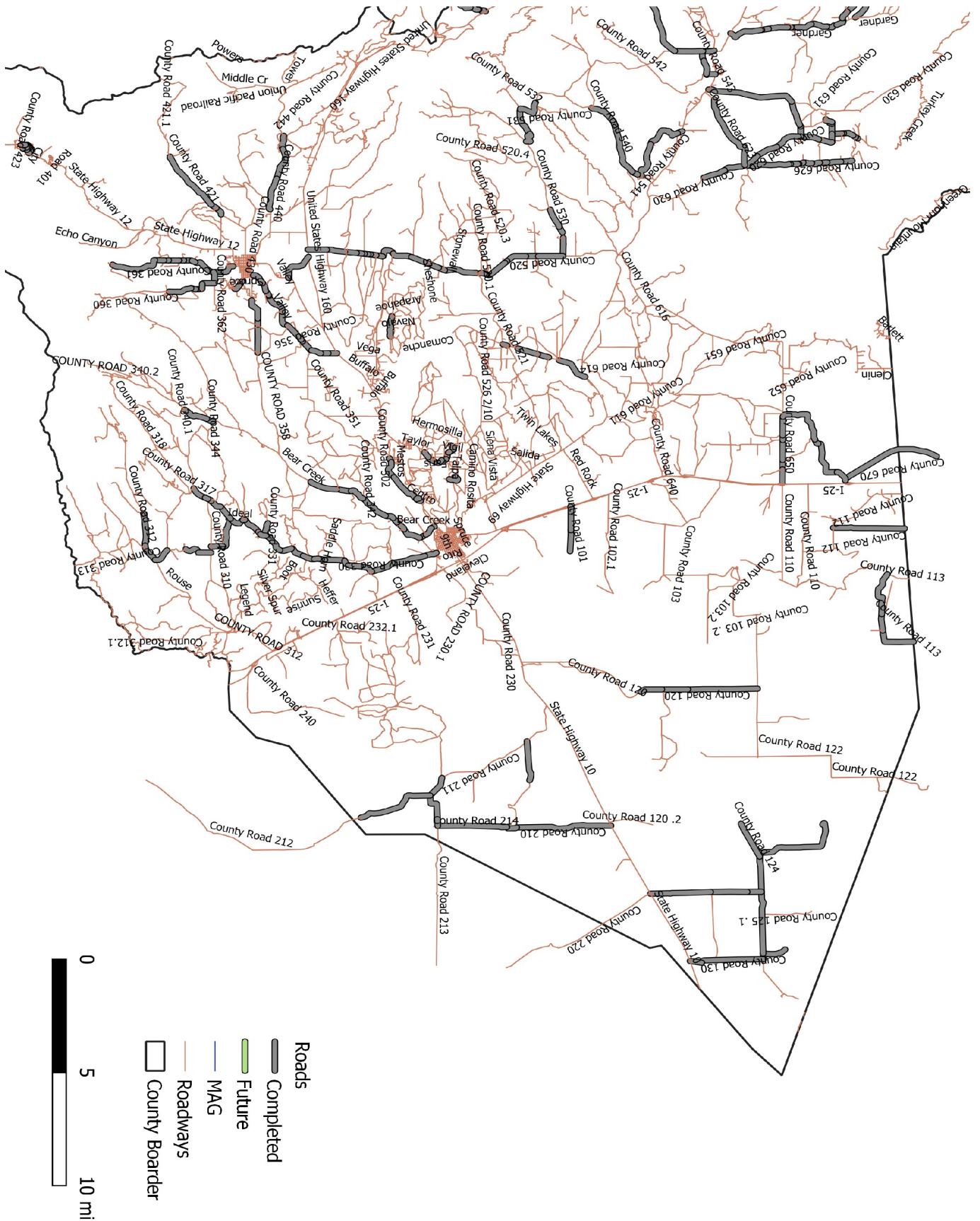
Gravel Operations

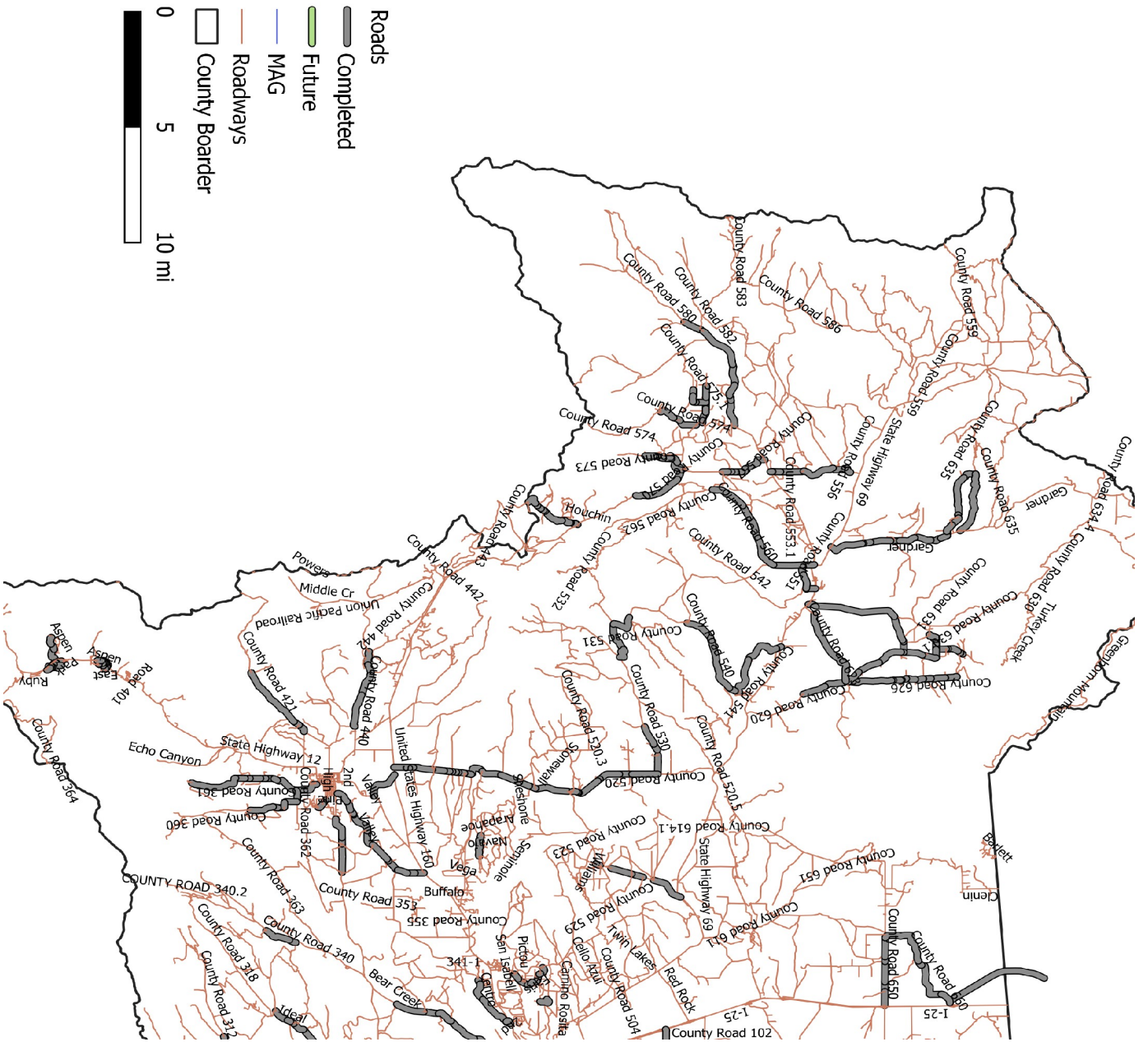
The weather the past couple months slowed things down some, but also a breakdown with the clutch going out on the primary crusher took some time away from production. All in all, things have been going good, we have been able to stay steadily hauling and getting roads graveled. We finished the first section of CR 120 which is about six miles and have a good start on CR 214. We have graveled about one and a half miles so far, with a total of three miles to gravel. Hoping to have this close to done by the end of May. With the finishing of CR 120 and the start of CR 214 we hauled a total of 238 loads of gravel, which is roughly 5,950 tons.

At the crusher they have been able to run most the time, besides some weather delays and the one breakdown. They have crushed 7,748 tons the last two months, hopefully with the weather changing tonnages will go up the next few months. In all at this pit we have crushed 27,355 tons.

Daily Blading

With the nice moisture blading has been good. There have been some days we haven't been able to get out and do anything because it got a little too wet. Other times we have had to go back and fix a road because it has got sloppy from receiving too much moisture after just blading it. But we are out every day we can be trying to fix the roads and improve on them to make the public happy. Road maintenance slowed a little, but we were still able to cover 167 miles of road.





Other Maintenance

Other maintenance to roads continue as normal. A new cattle guard was installed on CR 310 by the railroad tracks. This one just fell apart, the main support underneath rusted out and was beyond repair. A lot of wing repair has happened over all of the county, this winter seemed to be rough on them.

The erosion mat and waddles were put in place on the slope at the cemetery on CR 580. Seed was broadcasted out before hand, so hopefully with this moisture the grass will grow in good and help stabilize the bank.

Another item that has been coming along well is the road asset inventory. Charles has been working diligently to update the mapping we had, plus add some pictures and rating to the cattle guard and culverts. Once it is complete knowing what needs to be done to each one will be an easy process.

Equipment/Vehicle Repairs

Most repairs to Equipment has been done. We still have a few lingering machines that we just can't seem to get running and stay running. The two main problems are the John Deere blade in Gardner and the blue Peterbilt in Walsenburg. The blade seems to always be something different, right now it is having a fuel issue but will run good for a while, then loses all power.

The truck on the other hand is the same issue over and over. Has an emission problem and so far no one has been able to find the source of it. The next option we have is putting new injectors in it. We had the DPF filter cleaned again to see if that changes it for a while, then it will be the injectors.

Vehicle maintenance has been none stop since getting a mechanic. Most the county vehicles have all be fairly simple. The sheriff vehicles have all been major issues that have been put off for months. So usually when a car comes in from the sheriff it is in here on the lift for a week or more. Even at that the new mechanic has been able to keep up with things as they come in and gets things back out the door quick.