



STRANDTEC ACOUSTIC TESTING CHART

Panels (Direct Attach, Shapes, Backfill, Designs, Wrapped)

Thickness	Mount	100	125	160	200	250	315	400	500	630	800	1000	1250	1600	2000	2500	3150	4000	5000	SAA	NRC
1"	A	0.05	0.08	0.03	0.08	0.12	0.18	0.21	0.26	0.31	0.46	0.52	0.62	0.75	0.89	0.86	0.71	0.60	0.68	0.44	0.45
1"	C25	0.10	0.06	0.08	0.21	0.39	0.58	0.78	0.99	1.11	1.07	1.00	0.87	0.77	0.81	0.81	0.89	0.94	0.92	0.78	0.80
1"	C50	0.12	0.22	0.21	0.45	0.76	0.91	1.07	1.04	0.99	0.94	0.86	0.76	0.76	0.83	0.87	0.82	0.91	0.94	0.85	0.85
1"	D20	0.04	0.10	0.05	0.10	0.14	0.18	0.25	0.38	0.47	0.62	0.78	0.80	0.82	0.68	0.63	0.57	0.63	0.74	0.49	0.50
1" Microstrand	A	0.09	0.07	0.06	0.12	0.19	0.19	0.31	0.40	0.46	0.58	0.74	0.86	0.96	1.03	0.89	0.77	0.81	0.62	0.56	0.60
1" Microstrand	C25	0.05	0.12	0.10	0.18	0.37	0.56	0.77	0.97	1.09	1.06	1.01	0.97	0.87	0.81	0.87	0.89	1.00	0.92	0.79	0.80
1" Microstrand	C50	0.14	0.22	0.27	0.47	0.78	0.88	1.09	1.09	1.04	1.01	0.95	0.94	0.90	0.96	0.94	0.85	0.85	0.80	0.92	0.95
1" Microstrand	D20	0.06	0.11	0.08	0.11	0.17	0.24	0.31	0.39	0.52	0.62	0.81	0.88	0.87	0.72	0.66	0.56	0.75	0.86	0.53	0.50
1" Microstrand	D40	0.02	0.09	0.08	0.14	0.22	0.32	0.45	0.60	0.74	0.78	0.79	0.73	0.67	0.65	0.65	0.74	0.71	0.76	0.56	0.55
1" Microstrand	F6	0.00	0.07	0.06	0.07	0.15	0.21	0.26	0.33	0.40	0.48	0.58	0.74	0.87	0.88	0.84	0.71	0.76	0.90	0.48	0.50
1-3/8"	A	0.02	0.04	0.05	0.13	0.23	0.25	0.34	0.41	0.51	0.69	0.80	0.94	0.97	0.79	0.79	0.73	0.81	0.94	0.57	0.55
1-3/8"	D20	0.09	0.08	0.09	0.15	0.24	0.30	0.42	0.53	0.72	0.87	0.91	0.82	0.76	0.63	0.64	0.74	0.83	0.77	0.58	0.60
1-3/8"	C50	0.20	0.28	0.29	0.53	0.80	0.85	1.16	1.06	0.99	0.91	0.81	0.82	0.83	0.96	0.96	0.95	0.95	0.95	0.89	0.90
1-3/8"	C25	0.10	0.12	0.12	0.22	0.43	0.57	0.85	1.04	1.11	1.02	0.96	0.80	0.78	0.81	0.87	0.95	0.99	0.95	0.79	0.80
2"	A	0.04	0.11	0.11	0.21	0.29	0.42	0.59	0.74	0.87	1.01	1.08	1.05	0.89	0.85	0.86	0.97	1.02	0.94	0.74	0.75
2"	C25	0.20	0.16	0.16	0.38	0.56	0.82	1.00	1.07	1.09	0.99	0.91	0.85	0.90	1.01	0.94	0.89	0.93	0.90	0.88	0.90
2"	C50	0.21	0.31	0.32	0.66	0.86	0.93	1.11	1.00	0.96	0.90	0.89	0.91	1.03	0.98	1.01	0.99	0.95	1.00	0.94	0.95
2"	D20	0.07	0.10	0.12	0.22	0.34	0.49	0.68	0.93	1.03	1.03	0.91	0.75	0.72	0.81	0.89	0.92	0.96	0.97	0.73	0.75
2" Backfill	C25	0.10	0.06	0.08	0.21	0.39	0.58	0.78	0.99	1.11	1.07	1.00	0.87	0.77	0.81	0.81	0.89	0.94	0.92	0.78	0.80
2-3/8" Backfill	C25	0.10	0.12	0.12	0.22	0.43	0.57	0.85	1.04	1.11	1.02	0.96	0.80	0.78	0.81	0.87	0.95	0.99	0.95	0.79	0.80
3" Backfill	C25	0.20	0.16	0.16	0.38	0.56	0.82	1.00	1.07	1.09	0.99	0.91	0.85	0.90	1.01	0.94	0.89	0.93	0.90	0.88	0.90

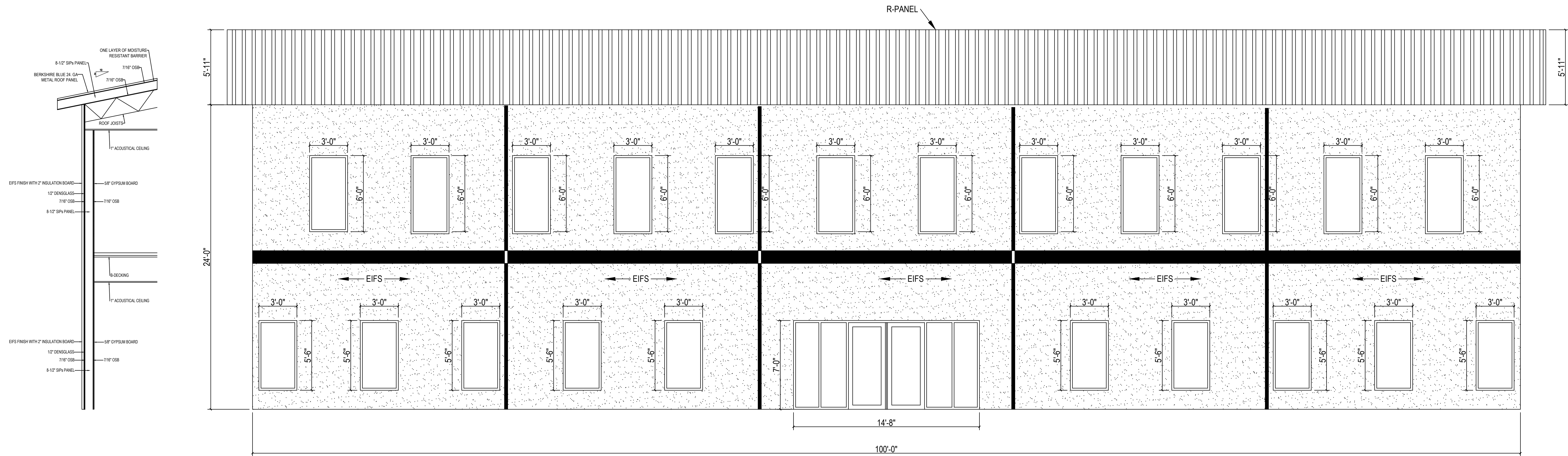


Ceiling Tiles (Lay-In, Tegular Lay-In, Designs)

Thickness	Mount	100	125	160	200	250	315	400	500	630	800	1000	1250	1600	2000	2500	3150	4000	5000	SAA	NRC
1"	E400	0.22	0.12	0.13	0.29	0.34	0.29	0.32	0.31	0.39	0.41	0.48	0.45	0.51	0.51	0.53	0.55	0.65	0.68	0.40	0.40
1" + 1" Backer	E400	0.54	0.01	0.06	0.39	0.73	0.67	0.76	0.78	0.87	0.94	0.96	0.80	0.75	0.70	0.66	0.73	0.90	0.91	0.75	0.80
1" + 2" Backer	E400	0.67	0.06	0.12	0.49	0.74	0.79	0.87	0.91	1.01	0.97	0.95	0.82	0.79	0.73	0.65	0.68	0.73	0.75	0.81	0.85
1" Microstrand	E400	0.20	0.34	0.39	0.48	0.54	0.48	0.44	0.37	0.49	0.59	0.62	0.68	0.69	0.72	0.75	0.80	0.84	0.86	0.57	0.55
1" Microstrand + 1" Backer	E400	0.27	0.42	0.50	0.66	0.82	0.74	0.81	0.77	0.90	1.01	1.00	0.98	0.97	0.93	0.90	0.87	0.91	1.00	0.87	0.90
1" Microstrand + 2" Backer	E400	0.43	0.42	0.51	0.66	0.91	0.86	0.91	0.92	0.95	0.97	0.99	0.99	0.95	0.92	0.90	0.92	1.01	1.00	0.91	0.95
1-3/8"	E400	0.21	0.27	0.31	0.56	0.53	0.49	0.41	0.41	0.53	0.57	0.64	0.70	0.75	0.73	0.78	0.81	0.85	0.80	0.59	0.60
1-3/8" + 1" Backer	E400	0.53	0.70	0.53	0.61	0.77	0.74	0.77	0.80	0.92	0.90	0.92	0.94	0.90	0.86	0.91	0.91	1.05	0.99	0.84	0.85
1-3/8" + 2" Backer	E400	0.46	0.61	0.52	0.67	0.80	0.80	0.85	0.92	0.97	0.96	0.91	0.91	0.90	0.91	0.91	0.95	0.92	0.87	0.88	0.90
2"	E400	0.35	0.35	0.35	0.59	0.64	0.62	0.56	0.60	0.74	0.76	0.86	0.89	0.90	0.94	0.94	0.93	0.88	0.98	0.75	0.75
2" + 1" Backer	E400	0.56	0.43	0.38	0.69	0.82	0.85	0.85	0.89	0.96	0.95	0.98	0.97	0.94	1.01	1.05	0.97	0.89	0.90	0.91	0.95
2" + 2" Backer	E400	0.56	0.47	0.39	0.60	0.89	0.90	0.90	0.98	0.99	0.98	0.97	0.97	0.99	0.95	1.03	0.97	0.95	0.98	0.93	0.95

Notes:

- All testing was performed according to testing standard ASTM C423 at accredited 3rd-party laboratories; full test reports are available for download at asiarchitectural.com.
- For C25 Mount, 1" Cellulose Fiber Backer was used. For C50 Mount, 2" Cellulose Fiber Backer was used.
- Noise Reduction Coefficient (NRC) — a single-number rating, the average, rounded to the nearest 0.05, of the sound absorption coefficients of a material at 250 Hz, 500 Hz, 1000 Hz, and 2000 Hz, measured according to the test method described in ASTM Test Method C423.
- Sound Absorption Average (SAA) — a single number rating, the average, rounded to the nearest 0.01, of the sound absorption coefficients of a material from 200 through 2500 Hz, measured according to the test method described in ASTM Test Method C423.



FRONT ELEVATION
 1/4" = 1'-0"

HARRIS INDUSTRIAL PARK

6 DAVIS RD
 RYE, CO 81069

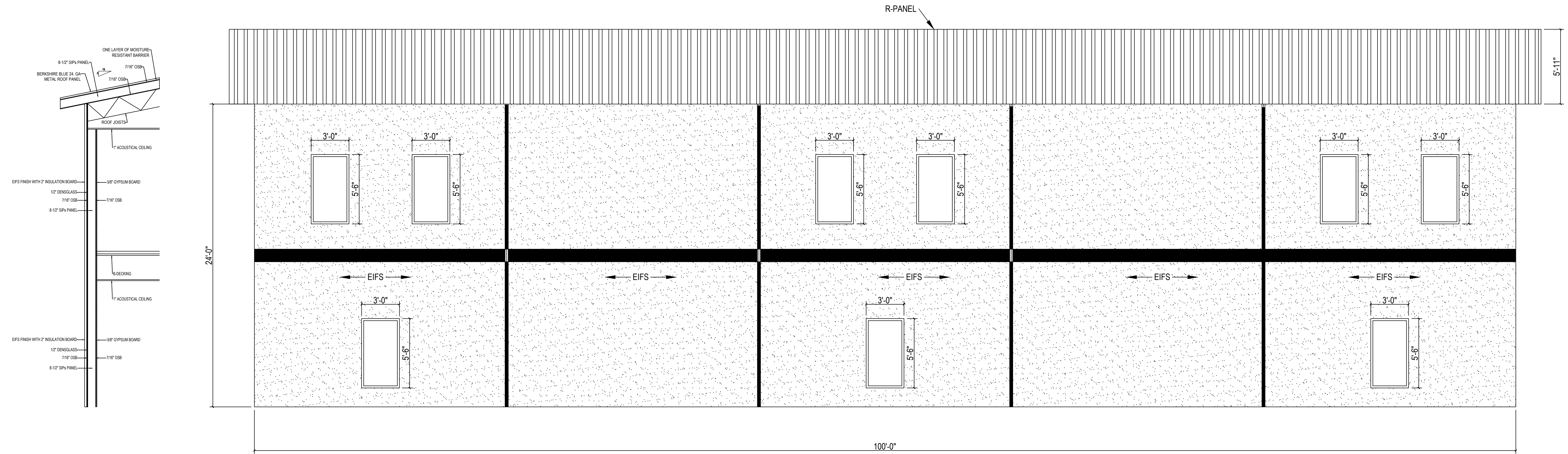
Date Of Revision 1:

Construction Documents Set

Date: May 08, 2024

SHEET TITLE
Exterior Elevations

SHEET NO.
A4.0



REAR ELEVATION
1/4" = 1'-0"

HARRIS INDUSTRIAL PARK

6 DAVIS RD
RYE, CO 81069

Date Of Revision 1:

Construction Documents Set

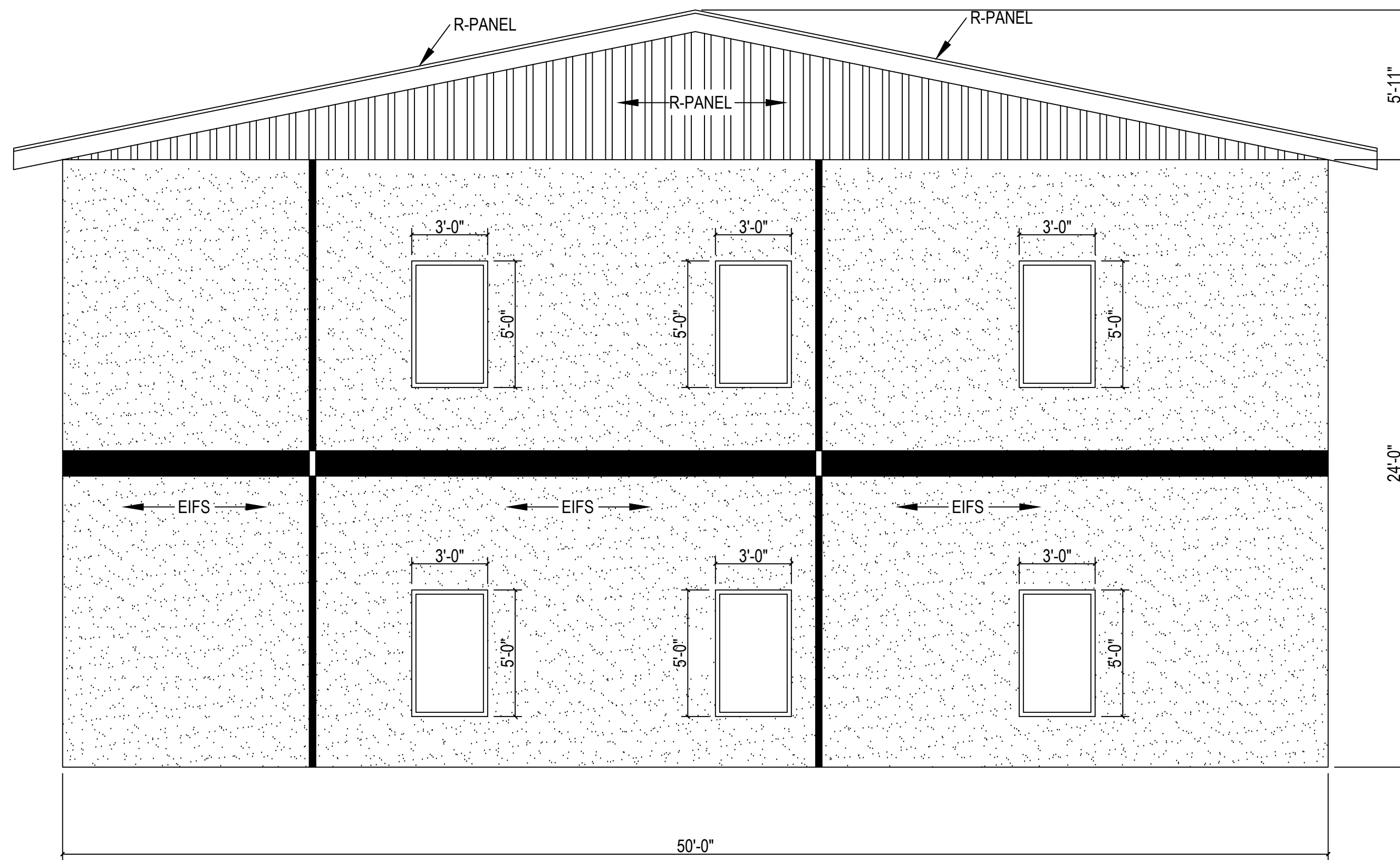
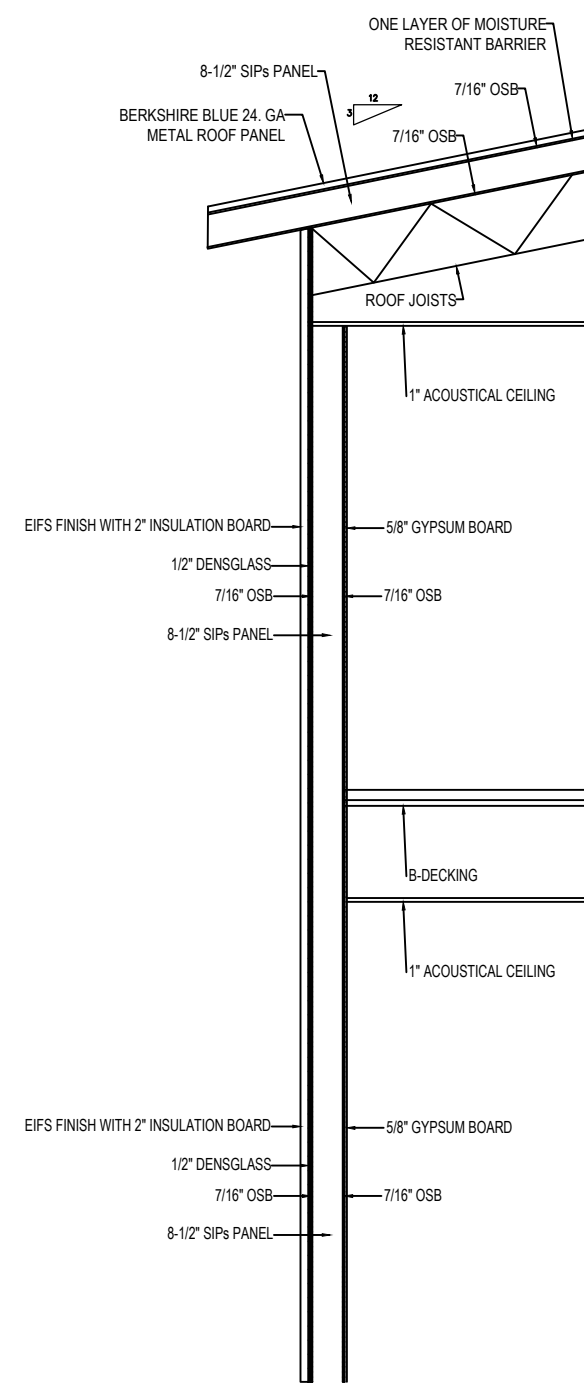
Date: May 08, 2024

SHEET TITLE

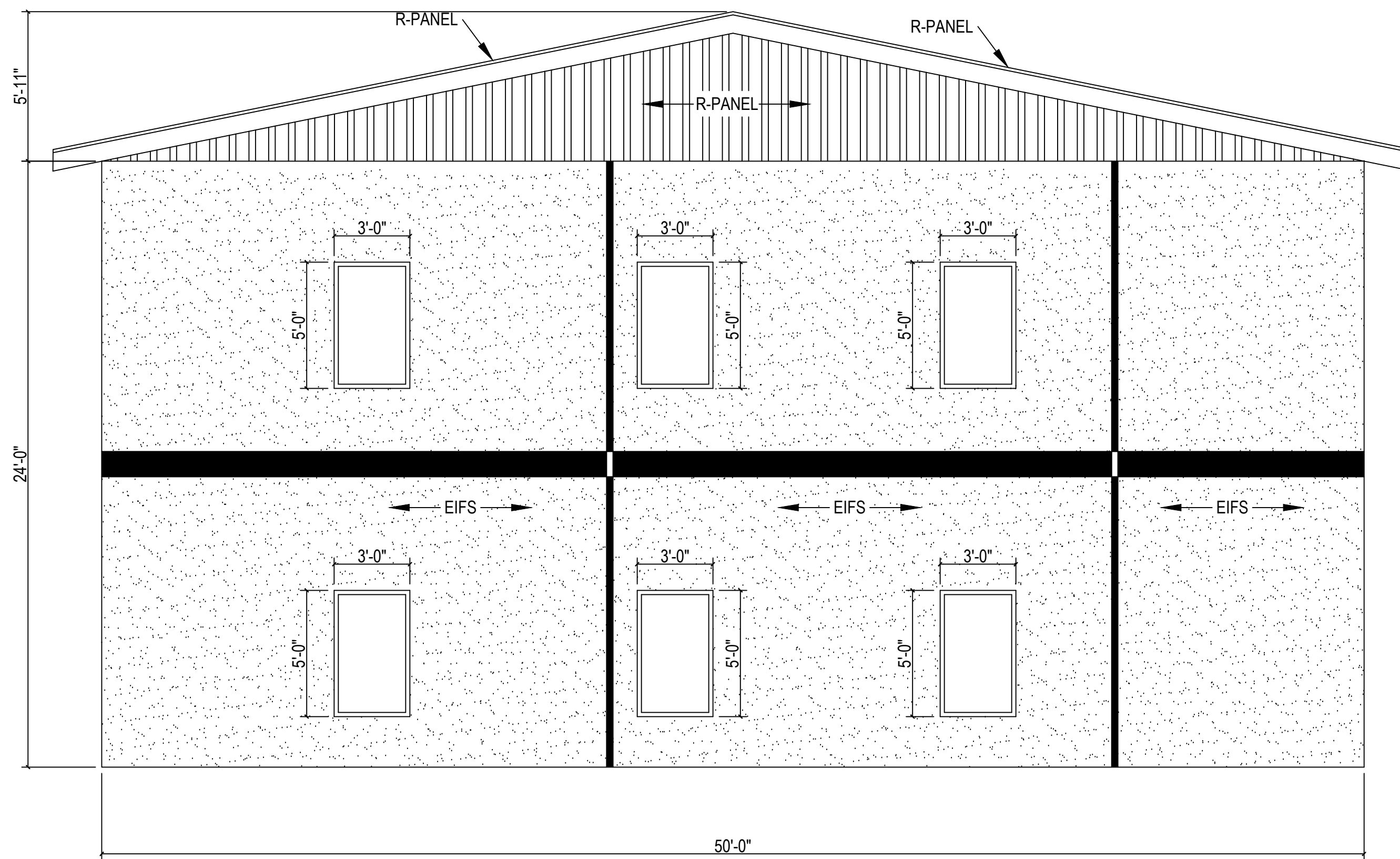
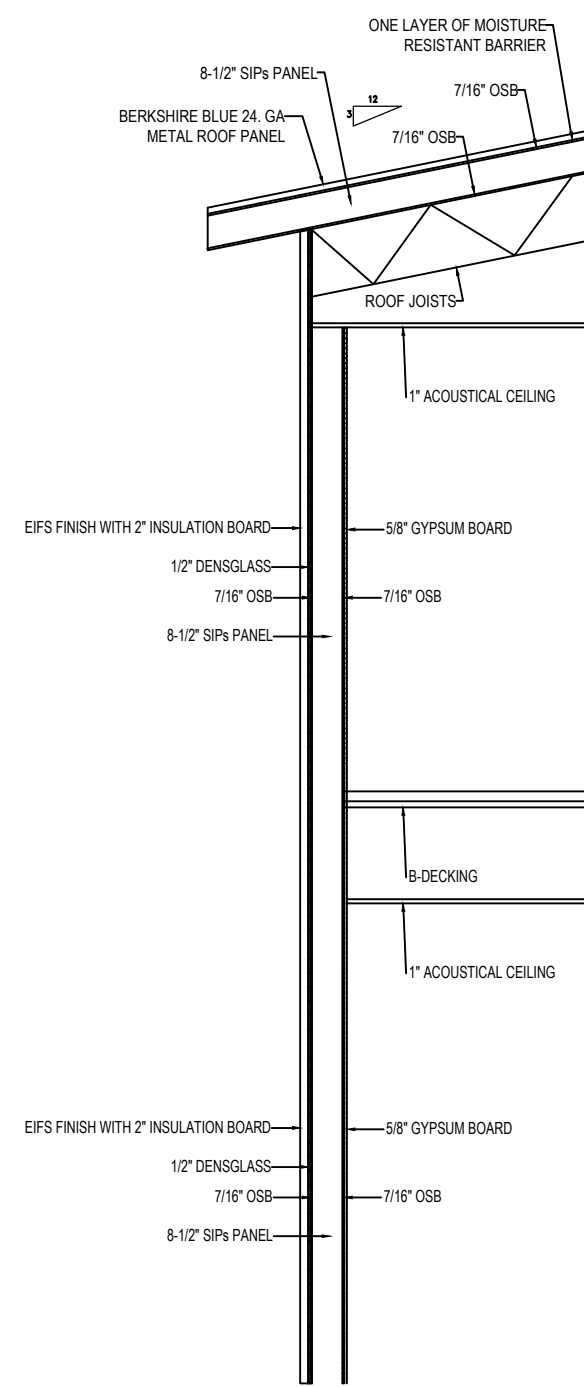
**Exterior
Elevations**

SHEET NO.

A5.0



LEFT ELEVATION
 1/4" = 1'-0"



RIGHT ELEVATION
 1/4" = 1'-0"

HARRIS INDUSTRIAL PARK

6 DAVIS RD
 RYE, CO 81069

Date Of Revision 1:

Construction Documents Set

Date: May 08, 2024

SHEET TITLE
Exterior Elevations

SHEET NO.

A6.0



PAC-CLAD®

P E T E R S E N

A **CARLISLE** COMPANY



FOREST GREEN



HARTFORD GREEN



MILITARY BLUE



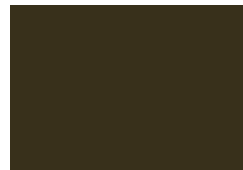
BERKSHIRE BLUE



PACIFIC BLUE
(fka Slate Blue)



AWARD BLUE



AGED BRONZE



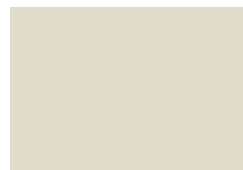
MEDIUM BRONZE



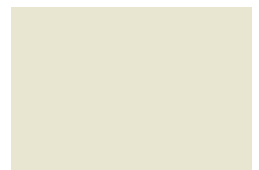
CARDINAL RED



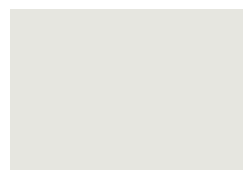
COLONIAL RED



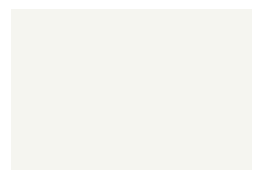
SANDSTONE



ALMOND



STONE WHITE

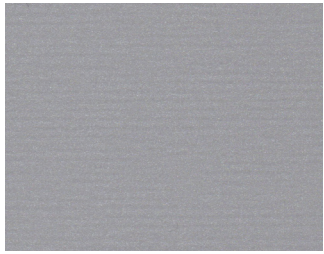


BONE WHITE

Color Guide

PAC-CLAD.COM

Premium Colors



●▲👑\$\$\$ ANODIC CLEAR



●▲👑\$\$\$ SILVERSMITH



●▲👑\$ SILVER



●▲👑\$ CHAMPAGNE



●▲👑\$ ZINC



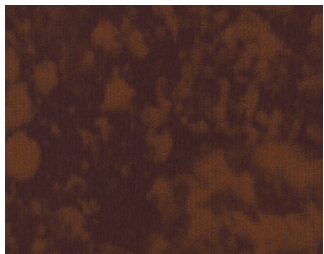
●▲👑\$ WEATHERED ZINC



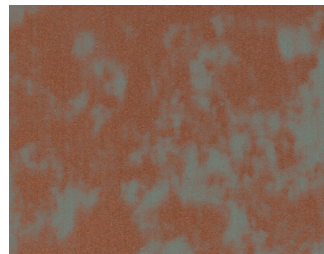
●▲👑\$ COPPER PENNY



●▲👑\$ AGED COPPER



👑\$\$\$ WEATHERED STEEL



👑\$\$\$ WEATHERED COPPER

Kynar 500® or Hylar 5000® pre-finished steel and aluminum for roofing, curtainwall and storefront applications.

● Metallic Colors \$ Pricing ▲ Cool Colors 👑 Premium Colors

See back for color availability chart.

Standard Colors



▲ PATINA GREEN



▲ TEAL



▲ HEMLOCK GREEN



▲ FOREST GREEN



▲ HARTFORD GREEN



▲ EVERGREEN



▲ HUNTER GREEN



▲ ARCADIA GREEN



▲ MILITARY BLUE



▲ BERKSHIRE BLUE



▲ GRAPHITE



▲ CHARCOAL



▲ INTERSTATE BLUE



▲ PACIFIC BLUE
(fka Slate Blue)



▲ AWARD BLUE



▲ MATTE BLACK STEEL
▲ BLACK ALUMINUM



▲ DARK BRONZE



▲ BURNISHED SLATE



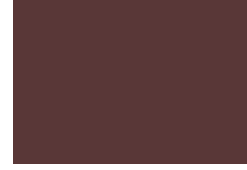
▲ AGED BRONZE



▲ MEDIUM BRONZE



▲ MANSARD BROWN



▲ BURGUNDY



▲ TERRA COTTA



▲ CARDINAL RED



▲ COLONIAL RED



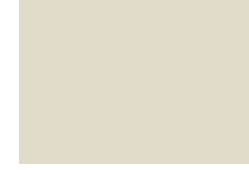
▲ MIDNIGHT BRONZE



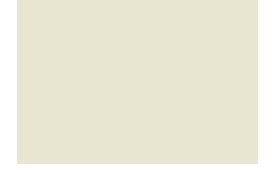
▲ MUSKET GRAY



▲ SIERRA TAN



▲ SANDSTONE



▲ ALMOND



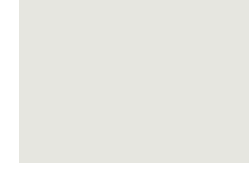
▲ SLATE GRAY



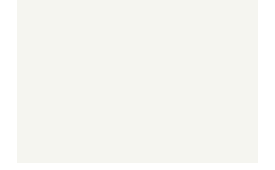
▲ CITYSCAPE



▲ GRANITE



▲ STONE WHITE



▲ BONE WHITE



PAC-CLAD.COM

IL: 800 PAC CLAD TX: 800 441 8661 MD: 800 344 1400
AZ: 833 750 1935 GA: 800 272 4482 WA: 833 750 1935

PAC-CLAD® Color Availability

PAC-CLAD STANDARD COLORS	REFLECTIVITY	EMISSIVITY	3 YEAR EXPOSURE	SRI	STEEL			ALUMINUM			20-IN. COIL	
					24 GA.	22 GA.	.032	.040	.050	.063	24 GA.	.032
AGED BRONZE	0.29	0.87	0.27	29	✓							
ALMOND	0.56	0.86	0.55	65	✓	✓	✓	✓	✓		✓	
ARCADIA GREEN	0.29	0.87	0.29	29	✓		✓					
AWARD BLUE***	0.24	0.86	0.23	22	✓		✓		✓			
BERKSHIRE BLUE*	0.30	0.87	0.27	31	✓							
BLACK ALUMINUM**	0.04	0.89	0.04	-2			✓	✓	✓	✓		
BONE WHITE	0.70	0.86	0.69	85	✓	✓	✓	✓	✓	✓	✓	✓
BURGUNDY	0.14	0.85	0.13	9	✓		✓		✓			
BURNISHED SLATE	0.32	0.87	0.31	33	✓							
CARDINAL RED***	0.44	0.86	0.44	49	✓		✓		✓			
CHARCOAL	0.30	0.86	0.30	30	✓		✓	✓	✓		✓	✓
CITYSCAPE	0.49	0.86	0.50	56	✓	✓	✓	✓	✓		✓	✓
COLONIAL RED	0.31	0.86	0.31	31	✓		✓	✓	✓			
DARK BRONZE	0.29	0.86	0.29	29	✓	✓	✓	✓	✓	✓	✓	✓
EVERGREEN	0.28	0.86	0.26	27	✓		✓					
FOREST GREEN	0.10	0.86	0.10	4	✓	✓	✓	✓	✓			
GRANITE*	0.33	0.87	0.33	34	✓	✓	✓	✓	✓			
GRAPHITE	0.29	0.87	0.28	29	✓							
HARTFORD GREEN	0.08	0.88	0.08	3	✓		✓	✓	✓			
HEMLOCK GREEN	0.31	0.87	0.30	32	✓		✓		✓			
HUNTER GREEN	0.28	0.86	0.27	27	✓		✓					
INTERSTATE BLUE	0.16	0.87	0.15	12	✓		✓		✓			
MANSARD BROWN	0.31	0.86	0.31	31	✓	✓	✓	✓	✓			
MATTE BLACK STEEL**	0.26	0.86	0.25	25	✓	✓					✓	
MEDIUM BRONZE	0.30	0.87	0.29	31	✓	✓	✓	✓	✓	✓	✓	✓
MIDNIGHT BRONZE	0.06	0.87	0.06	0	✓			✓				
MILITARY BLUE	0.31	0.86	0.30	31	✓		✓					
MUSKET GRAY	0.32	0.86	0.31	33	✓	✓	✓		✓			
PACIFIC BLUE	0.28	0.86	0.27	27	✓		✓					
PATINA GREEN	0.33	0.86	0.32	34	✓		✓					
SANDSTONE	0.48	0.86	0.48	54	✓	✓	✓	✓	✓	✓	✓	✓
SIERRA TAN	0.32	0.82	0.31	31	✓	✓	✓	✓	✓		✓	
SLATE GRAY	0.38	0.86	0.37	41	✓	✓	✓	✓	✓		✓	✓
STONE WHITE	0.69	0.86	0.67	84	✓	✓	✓	✓	✓	✓	✓	✓
TEAL	0.32	0.86	0.32	33	✓		✓					
TERRA COTTA	0.34	0.87	0.33	36	✓		✓		✓		✓	✓
PAC-CLAD PREMIUM COLORS												
AGED COPPER	0.55	0.80	0.53	62	✓		✓					
ANODIC CLEAR	0.32	0.83	0.31	31				✓				
CHAMPAGNE	0.50	0.85	0.49	57	✓		✓	✓	✓			
COPPER PENNY	0.52	0.81	0.52	58	✓		✓	✓	✓		✓	
SILVER	0.47	0.87	0.46	53	✓	✓	✓	✓	✓		✓	✓
SILVERSMITH	0.32	0.88	0.32	34				✓				
WEATHERED COPPER	0.45	0.88	N/A	51	✓							
WEATHERED STEEL	0.32	0.89	N/A	34	✓							
WEATHERED ZINC	0.48	0.82	0.46	53	✓	✓	✓		✓			
ZINC	0.42	0.82	0.38	45	✓		✓	✓	✓			
CLEAR-COAT ACRYLIC FINISH (NON-KYNAR)												
GALVALUME PLUS	0.68	0.14	0.55	57	✓	✓					✓	

PAC-CLAD Premium finishes are available from stock at a moderate extra cost. PAC-CLAD Copper Penny is a Non-Weathering finish. Solar Reflectance Index calculated according to ASTM E-1980.

*Low Gloss/Low Sheen, 70% PVDF finish ** Appearance differs for Black Aluminum and Matte Black Steel *** 10-year finish warranty

TECHNICAL DATA FOR KYNAR 500/HYLAR 5000 COATING:

- ▶ South Florida Exposure: Color (ASTM D 2244) - No more than 5ΔE Hunter units at 20 years; Chalk (ASTM D 4214) - Rating no less than 8 at 20 years; Film integrity - 20 years.
- ▶ Accelerated Weathering (ASTM D 4587, ASTM G 154): 5000 Hours; Chalk, per ASTM D 4214, rating of 6 or better; Color, per ASTM D 2244, < 5ΔE (Hunter Units) color change.
- ▶ Humidity Resistance (ASTM D 2247): Galvalume or HDG, 100% RH, 2000 hours - No field blisters; Aluminum, 100% RH,

- 3000 hours - No field blisters
- ▶ Salt Spray Resistance (ASTM B 117): Aluminum: 3000 hours, creep from scribe no more than 1/16" (2mm), no field blisters. Galvalume or HDG: 2000 hours, creep from scribe no more than 1/8" (4mm), no field blisters
- ▶ Chemical/Acid Pollution Resistance (ASTM D 1308): Pass
- ▶ T-Bend (ASTM D 4145): 1T - 3T with no loss of adhesion
- ▶ Pencil hardness (ASTM D 3363): HB - 2H
- ▶ Specular Gloss (ASTM D 523) @ 60 degrees: Typical - 20 - 35
- ▶ Abrasion Resistance (ASTM D 968): 80 Liters/Mil +/- 5 Liters

- ▶ Cross Hatch Adhesion (ASTM D 3359): No loss of adhesion
- ▶ Reverse Impact (ASTM D 2794): Galvalume or HDG, 2x metal thickness inch-pounds, no loss of adhesion; Aluminum, 1.5x metal thickness inch-pounds, no loss of adhesion
- ▶ Flame Test (ASTM E 84): Class A Coating

ROOF DECK

1.5" Type B
Wide Rib



1.5" Type F
Intermediate Rib



3.0" Type N
Deep Rib



1.5" Type A
Narrow Rib



FORM DECK

9/16"



1.0"



1.5"



COMPOSITE DECK

1.5"



2.0"

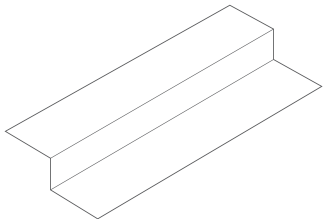


3.0"

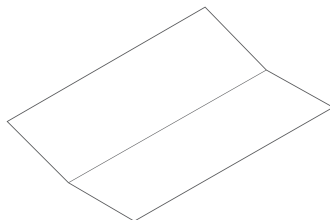


ACCESSORIES

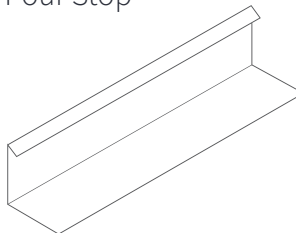
Z Closure



Ridge & Valley Plates



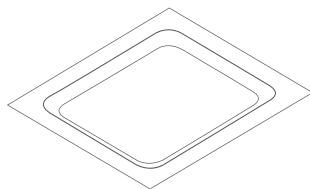
Pour Stop



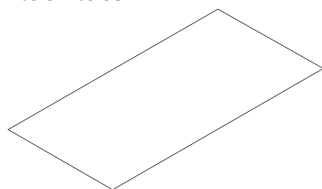
Cell closure



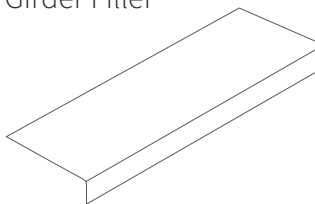
Sump Pan



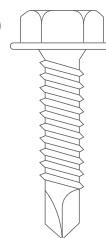
Flat Plate



Girder Filler



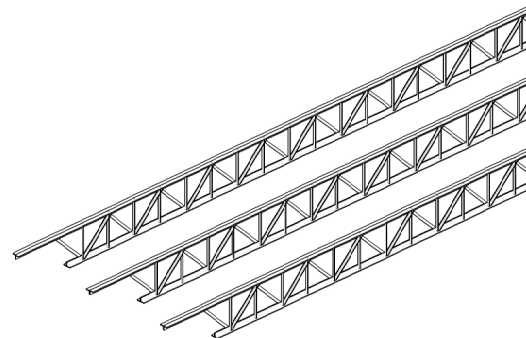
Sidelap
Screws



OUR SERVICES

Joists & Deck Packages

We can optimize costs by supplying bar joists and metal deck for your project.



Takeoffs

A good estimate is critical to the bidding process. Our precise estimate keeps you competitive and protects you from underpricing work.

Shop Drawings & Detailing

Our team can provide shop drawings for your project fast while making the installation simple and efficient.

