

353  
2015

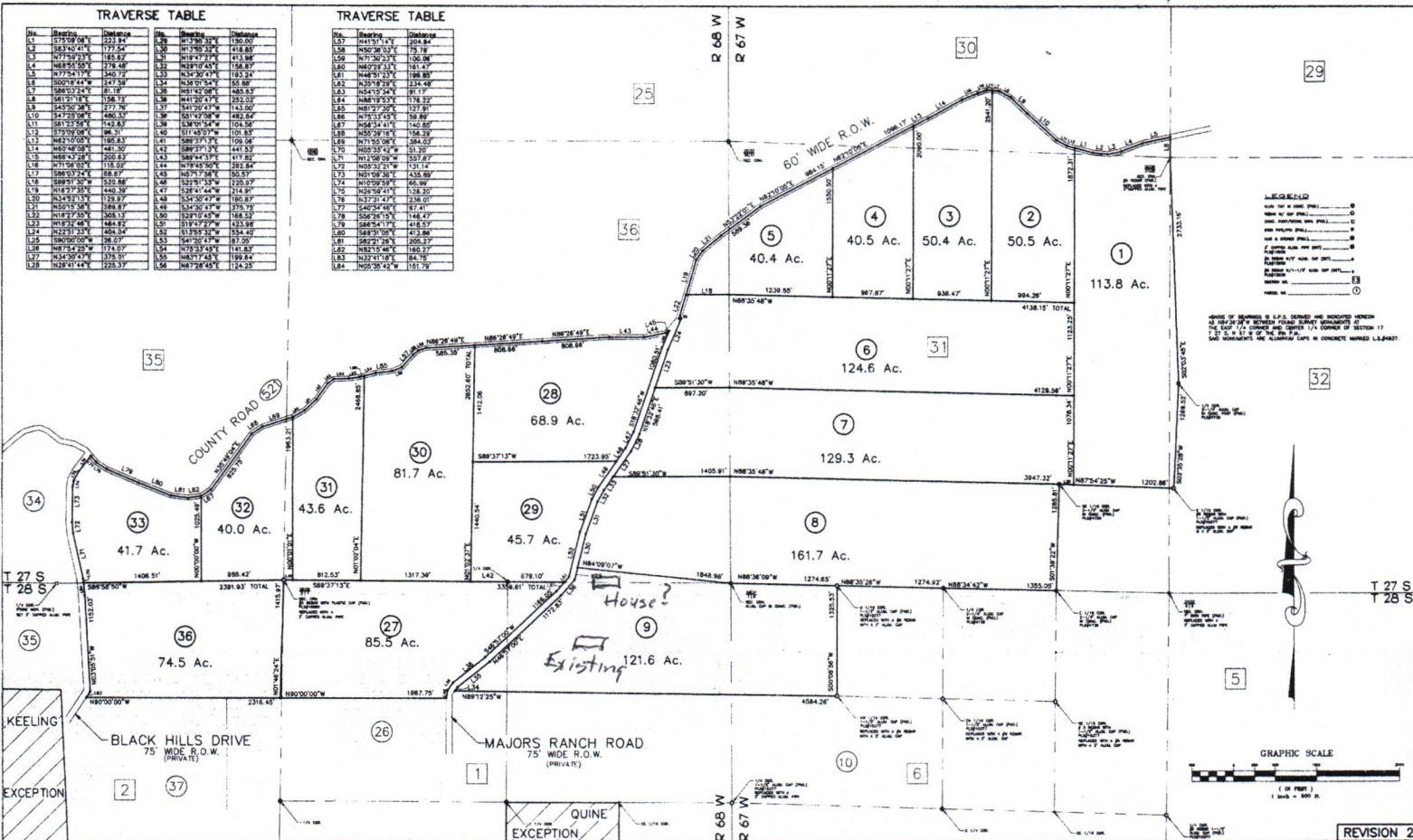
Packet 7  
Folder 3  
2 of 5

TRAVERSE TABLE

Sta.	Backsight	Sight	Distance	Angle	Distance	Angle	Distance
1	1595.08	223.84	1.58	N175°52'31"	1580.00		
2	1583.20	177.54	1.50	N175°52'31"	1418.80		
3	1575.25	183.52	1.50	N175°52'31"	1235.28		
4	1568.50	278.48	1.52	N182°07'43"	158.87		
5	1577.14	340.17	1.53	N125°30'41"	122.24		
6	1500.14	247.58	1.54	N125°30'41"	55.88		
7	1483.24	61.39	1.58	N125°30'41"	480.83		
8	1481.21	156.72	1.58	N142°20'13"	151.22		
9	1425.20	277.76	1.57	S42°20'47"	143.00		
10	1422.20	480.33	1.56	S42°20'47"	480.34		
11	1381.23	742.83	1.58	S38°00'00"	104.50		
12	1379.08	386.37	1.65	S11°40'15"	122.51		
13	1482.02	185.83	1.41	S89°37'13"	109.08		
14	1483.28	202.83	1.43	S89°37'13"	171.22		
15	1483.28	202.83	1.43	S89°37'13"	171.22		
16	1483.28	202.83	1.43	S89°37'13"	171.22		
17	1483.28	202.83	1.43	S89°37'13"	171.22		
18	1483.28	202.83	1.43	S89°37'13"	171.22		
19	1483.28	202.83	1.43	S89°37'13"	171.22		
20	1483.28	202.83	1.43	S89°37'13"	171.22		
21	1483.28	202.83	1.43	S89°37'13"	171.22		
22	1483.28	202.83	1.43	S89°37'13"	171.22		
23	1483.28	202.83	1.43	S89°37'13"	171.22		
24	1483.28	202.83	1.43	S89°37'13"	171.22		
25	1483.28	202.83	1.43	S89°37'13"	171.22		
26	1483.28	202.83	1.43	S89°37'13"	171.22		
27	1483.28	202.83	1.43	S89°37'13"	171.22		
28	1483.28	202.83	1.43	S89°37'13"	171.22		
29	1483.28	202.83	1.43	S89°37'13"	171.22		
30	1483.28	202.83	1.43	S89°37'13"	171.22		
31	1483.28	202.83	1.43	S89°37'13"	171.22		
32	1483.28	202.83	1.43	S89°37'13"	171.22		
33	1483.28	202.83	1.43	S89°37'13"	171.22		
34	1483.28	202.83	1.43	S89°37'13"	171.22		
35	1483.28	202.83	1.43	S89°37'13"	171.22		
36	1483.28	202.83	1.43	S89°37'13"	171.22		
37	1483.28	202.83	1.43	S89°37'13"	171.22		

TRAVERSE TABLE

Sta.	Backsight	Sight	Distance	Angle	Distance	Angle	Distance
1	1413.15	124.84	1.50	N175°52'31"	124.84		
2	1405.20	178.78	1.50	N175°52'31"	106.28		
3	1397.25	184.76	1.50	N175°52'31"	87.72		
4	1390.50	279.72	1.52	N182°07'43"	158.87		
5	1379.14	341.41	1.53	N125°30'41"	122.24		
6	1302.14	247.82	1.54	N125°30'41"	55.88		
7	1285.24	61.63	1.58	N125°30'41"	480.83		
8	1283.21	157.06	1.58	N142°20'13"	151.22		
9	1226.20	278.00	1.57	S42°20'47"	143.00		
10	1223.20	480.57	1.56	S42°20'47"	480.58		
11	1182.23	743.07	1.58	S38°00'00"	104.50		
12	1179.08	387.61	1.65	S11°40'15"	122.51		
13	1282.02	187.07	1.41	S89°37'13"	109.08		
14	1283.28	204.07	1.43	S89°37'13"	171.22		
15	1283.28	204.07	1.43	S89°37'13"	171.22		
16	1283.28	204.07	1.43	S89°37'13"	171.22		
17	1283.28	204.07	1.43	S89°37'13"	171.22		
18	1283.28	204.07	1.43	S89°37'13"	171.22		
19	1283.28	204.07	1.43	S89°37'13"	171.22		
20	1283.28	204.07	1.43	S89°37'13"	171.22		
21	1283.28	204.07	1.43	S89°37'13"	171.22		
22	1283.28	204.07	1.43	S89°37'13"	171.22		
23	1283.28	204.07	1.43	S89°37'13"	171.22		
24	1283.28	204.07	1.43	S89°37'13"	171.22		
25	1283.28	204.07	1.43	S89°37'13"	171.22		
26	1283.28	204.07	1.43	S89°37'13"	171.22		
27	1283.28	204.07	1.43	S89°37'13"	171.22		
28	1283.28	204.07	1.43	S89°37'13"	171.22		
29	1283.28	204.07	1.43	S89°37'13"	171.22		
30	1283.28	204.07	1.43	S89°37'13"	171.22		
31	1283.28	204.07	1.43	S89°37'13"	171.22		
32	1283.28	204.07	1.43	S89°37'13"	171.22		
33	1283.28	204.07	1.43	S89°37'13"	171.22		
34	1283.28	204.07	1.43	S89°37'13"	171.22		
35	1283.28	204.07	1.43	S89°37'13"	171.22		
36	1283.28	204.07	1.43	S89°37'13"	171.22		
37	1283.28	204.07	1.43	S89°37'13"	171.22		



- 1. ALL CORNERS...
- 2. ALL CORNERS...
- 3. ALL CORNERS...
- 4. ALL CORNERS...
- 5. ALL CORNERS...
- 6. ALL CORNERS...
- 7. ALL CORNERS...
- 8. ALL CORNERS...
- 9. ALL CORNERS...
- 10. ALL CORNERS...
- 11. ALL CORNERS...
- 12. ALL CORNERS...
- 13. ALL CORNERS...
- 14. ALL CORNERS...
- 15. ALL CORNERS...
- 16. ALL CORNERS...
- 17. ALL CORNERS...
- 18. ALL CORNERS...
- 19. ALL CORNERS...
- 20. ALL CORNERS...
- 21. ALL CORNERS...
- 22. ALL CORNERS...
- 23. ALL CORNERS...
- 24. ALL CORNERS...
- 25. ALL CORNERS...
- 26. ALL CORNERS...
- 27. ALL CORNERS...
- 28. ALL CORNERS...
- 29. ALL CORNERS...
- 30. ALL CORNERS...
- 31. ALL CORNERS...
- 32. ALL CORNERS...
- 33. ALL CORNERS...
- 34. ALL CORNERS...
- 35. ALL CORNERS...
- 36. ALL CORNERS...
- 37. ALL CORNERS...

NOTES: 1. ALL CORNERS... 2. ALL CORNERS... 3. ALL CORNERS... 4. ALL CORNERS... 5. ALL CORNERS... 6. ALL CORNERS... 7. ALL CORNERS... 8. ALL CORNERS... 9. ALL CORNERS... 10. ALL CORNERS... 11. ALL CORNERS... 12. ALL CORNERS... 13. ALL CORNERS... 14. ALL CORNERS... 15. ALL CORNERS... 16. ALL CORNERS... 17. ALL CORNERS... 18. ALL CORNERS... 19. ALL CORNERS... 20. ALL CORNERS... 21. ALL CORNERS... 22. ALL CORNERS... 23. ALL CORNERS... 24. ALL CORNERS... 25. ALL CORNERS... 26. ALL CORNERS... 27. ALL CORNERS... 28. ALL CORNERS... 29. ALL CORNERS... 30. ALL CORNERS... 31. ALL CORNERS... 32. ALL CORNERS... 33. ALL CORNERS... 34. ALL CORNERS... 35. ALL CORNERS... 36. ALL CORNERS... 37. ALL CORNERS...



**SANTO ASSOCIATES P.C.**  
 REGISTERED PROFESSIONAL LAND SURVEYORS  
 P.O. Box 798  
 LA VETA, COLORADO 81055  
 Phone (719) 748-8415

NO.	DATE	DESCRIPTION	BY
1	08/11/95	ROAD & PARCEL CONFIGURATION	REV

SHEET 2 OF 5

**SURVEYOR'S STATEMENT**  
 I, JOHN R. STOKES, A PROFESSIONAL LAND SURVEYOR LICENSED TO PRACTICE IN THE STATE OF COLORADO, AFFIRM THAT THIS SURVEY AND PLAN WERE PERFORMED UNDER MY DIRECT SUPERVISION AND CHECKING AND ARE TRUE AND CORRECT TO THE BEST OF MY KNOWLEDGE AND BELIEF.

*John R. Stokes*  
 JOHN R. STOKES P.L.S. 12930

SCALE: 1" = 500' DWS NO. 3664/280  
 DATE: 08/31/09 CHECKED BY: J.A.S.  
 DRAWN BY: C.A.R.

ONLY CORRECT WHEN THE ORIGINAL OF THIS SURVEY IS FILED WITH THE ORIGINAL OF THE LAND SURVEYING BOARD'S RECORDS.



**MAJORS RANCH - PHASE II**  
 Huerfano County, Colorado

PHASE (719) 748-8807