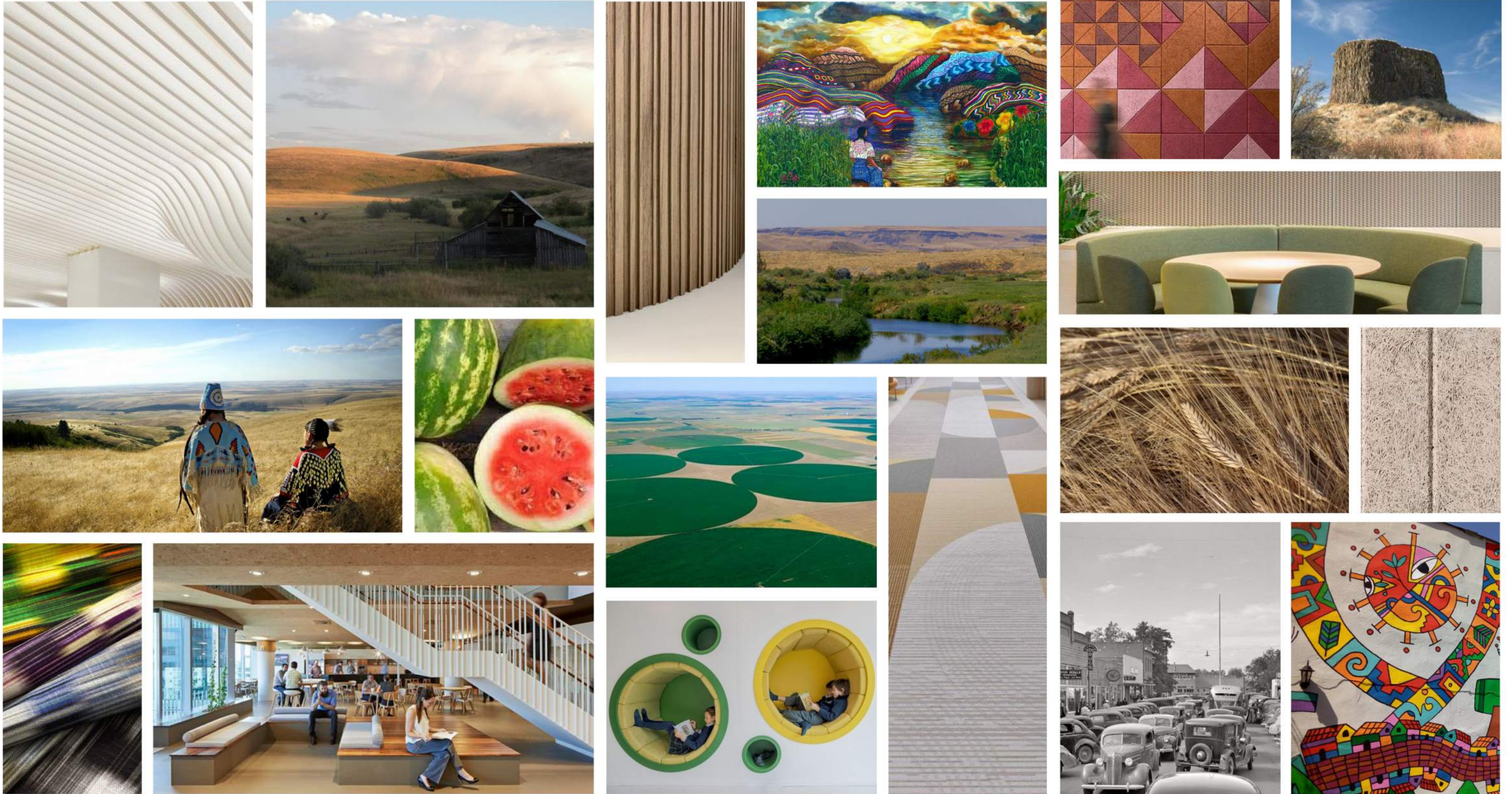


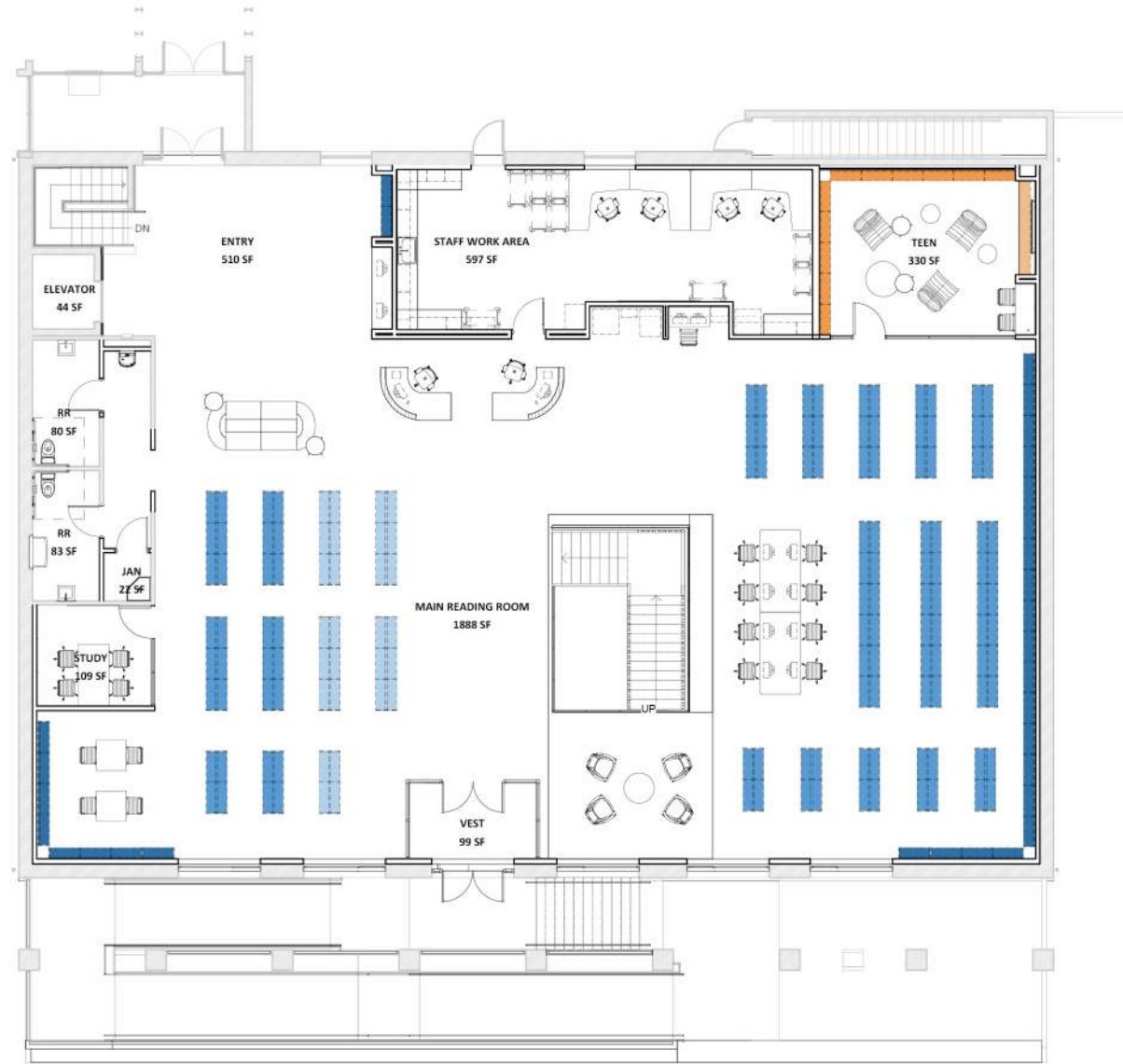
# Design Aspiration

AMPLIFIED LIGHT | REGIONAL PALETTE | ENERGIZED COLORS | WARM AND WELCOMING | ORGANIC TEXTURE | RESPONSIVE TO COMMUNITY

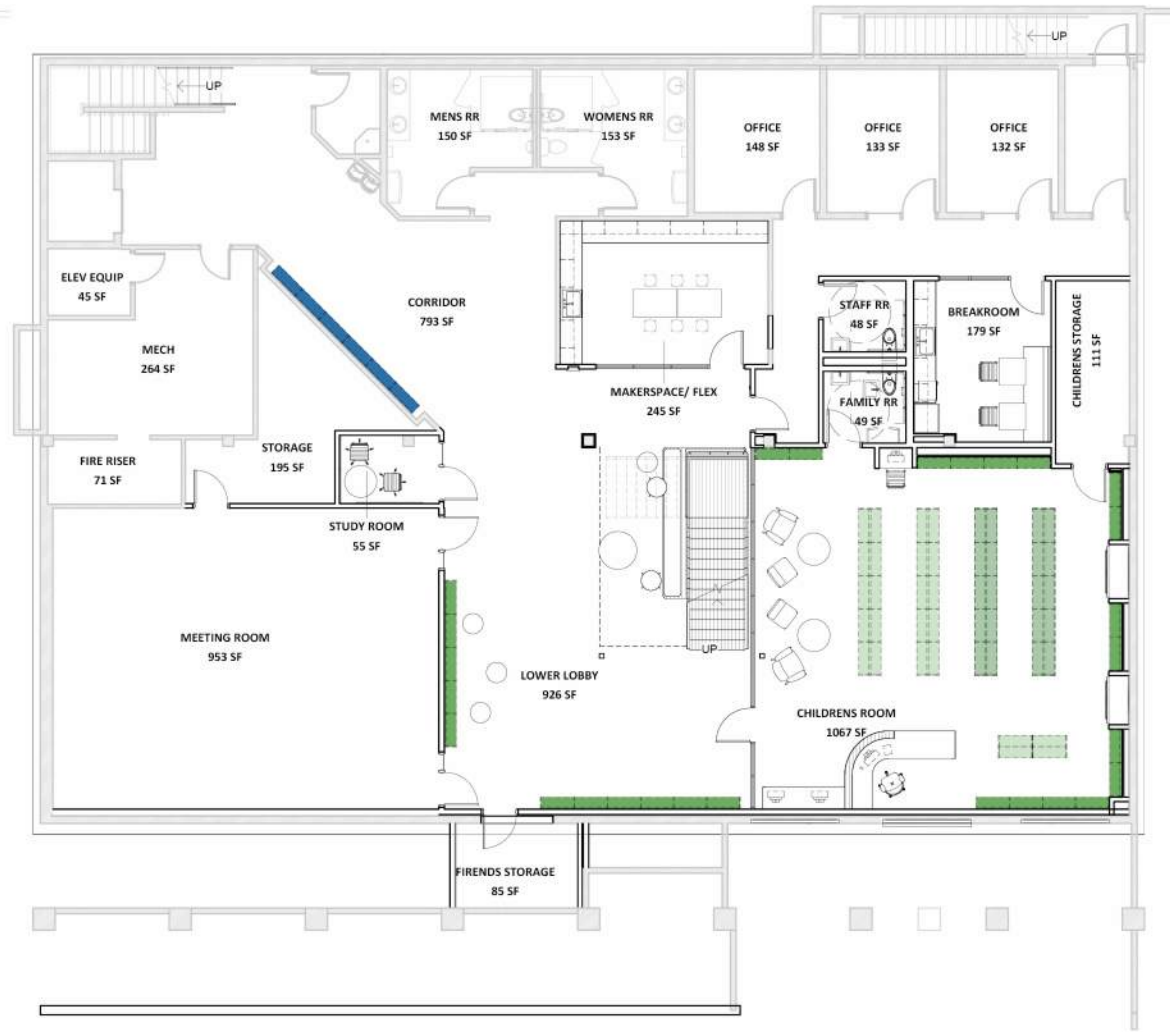


# Floor Plan Updates

STACK COUNTS



Level 01



Level 00

**ADULT COLLECTION**

- 84" 7 SHELVES
- 66" 5 SHELVES
- 48" 3 SHELVES

**TEEN COLLECTION**

- 84" 7 SHELVES
- 34" 2 SHELVES

**CHILDREN'S COLLECTION**

- 66" 5 SHELVES
- 48" 3 SHELVES
- 34" 2 SHELVES

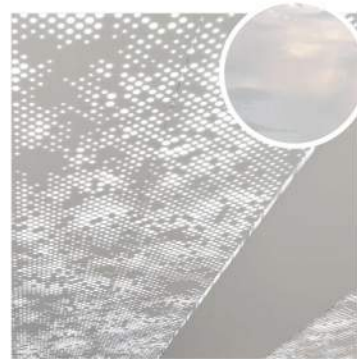
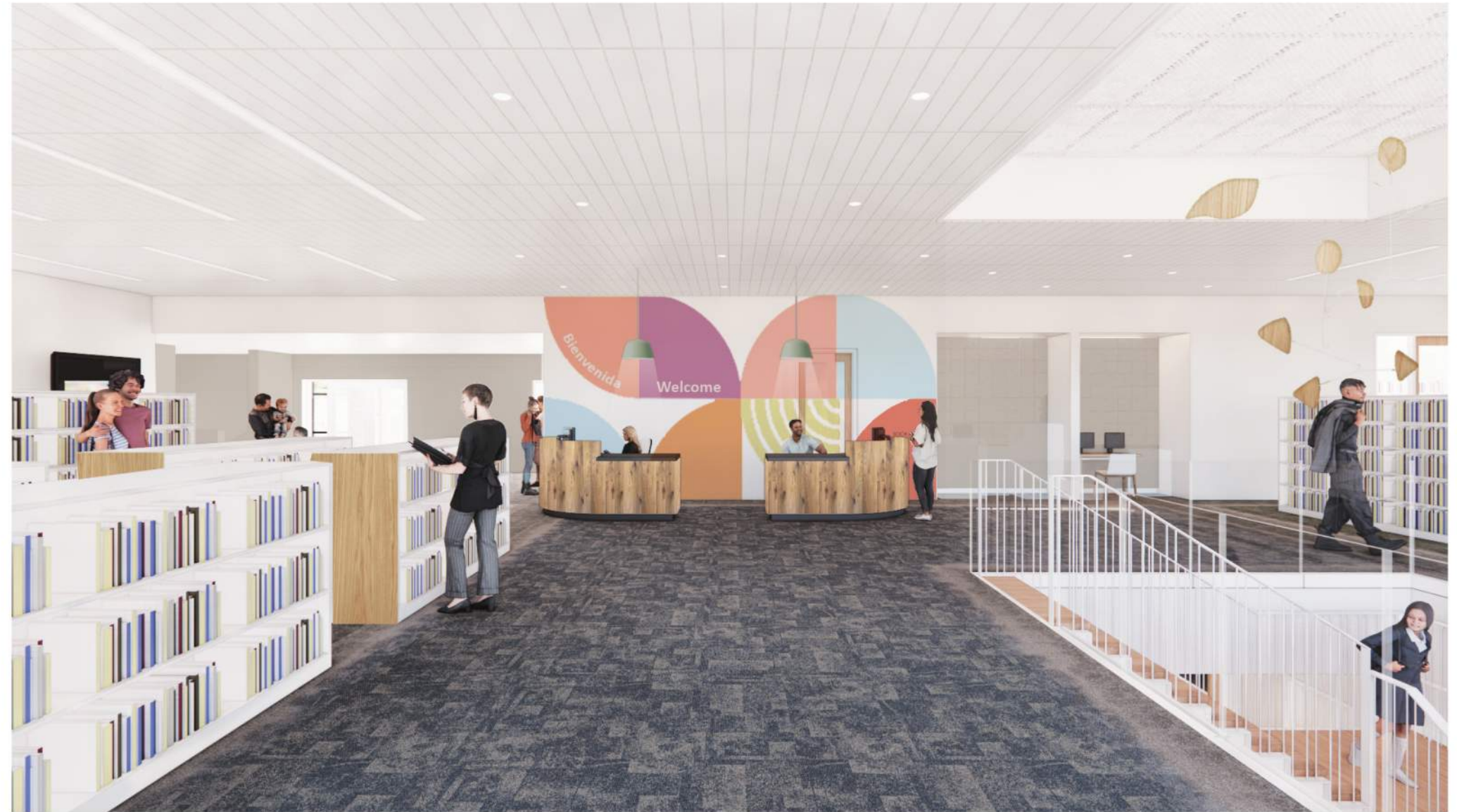
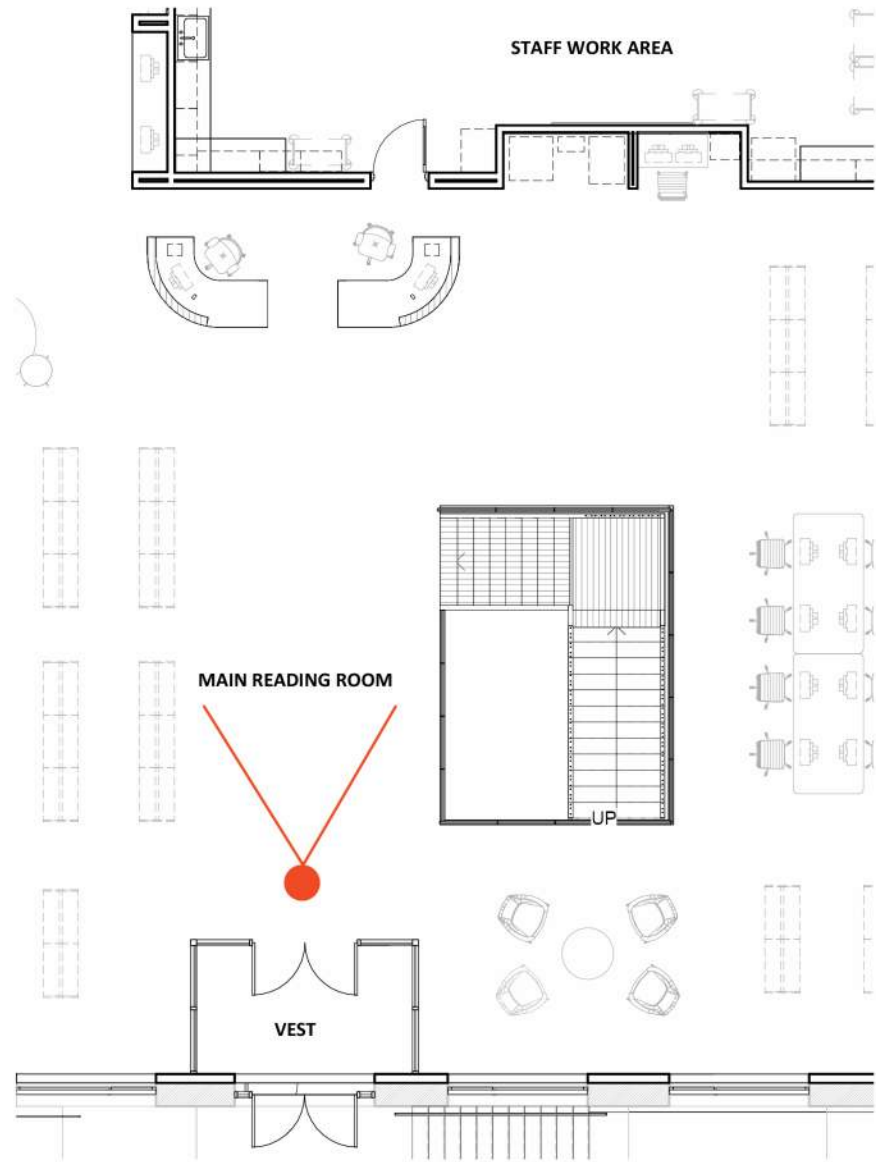
**# OF UNITS REQUESTED**

Adult	913
Teen	86
Children's	242

**# OF UNITS PROVIDED**

Adult	926
Teen	<b>83</b>
Children's	243

# Main Reading Room View from South Entry



Arktura Ceiling Panel  
Product: Vapor Cumula



Elevated Acoustic Ceiling Tile  
Product: Armstrong  
Cirrus Second Look



Decorative Pendant  
MFR: Muuto  
Color: Green



General White Paint  
MFR: Benjamin Moore  
Color: Simply White



Reclaimed Oak Desk Face  
Species: Reclaimed Oak  
Color: Black and Tan

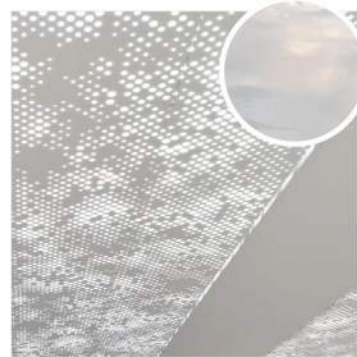
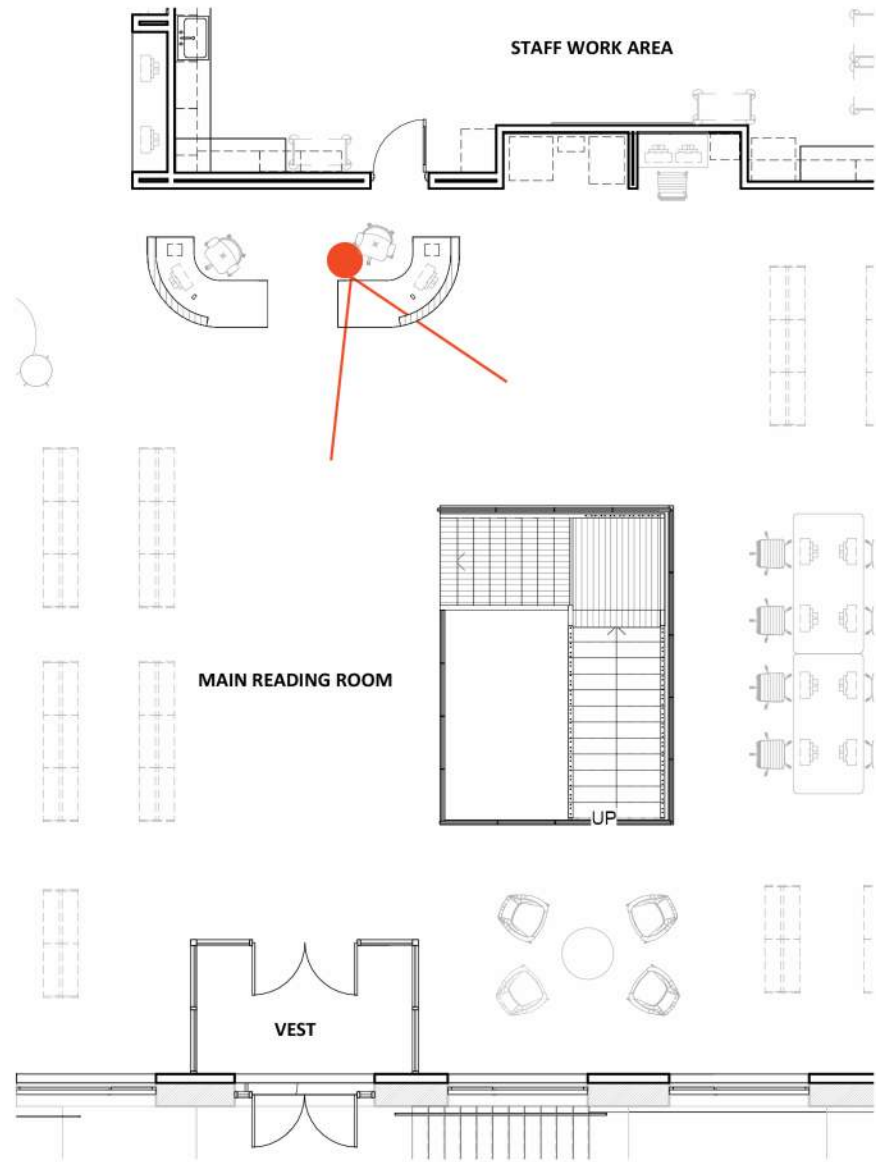


Counter Top  
MFR: Caesarstone  
Color: 4004 Raw Concrete



Gradiated Carpet  
MFR: Interface  
Style: Open Air 404 Accent, Open Air 404 Transition  
Color: Cobalt, Nickel/Cobalt

# Main Reading Room View from Service Desk



Arktura Ceiling Panel  
Product: Vapor Cumula



Elevated Acoustic Ceiling Tile  
Product: Armstrong  
Cirrus Second Look



Decorative Pendant  
MFR: Muuto  
Color: Green



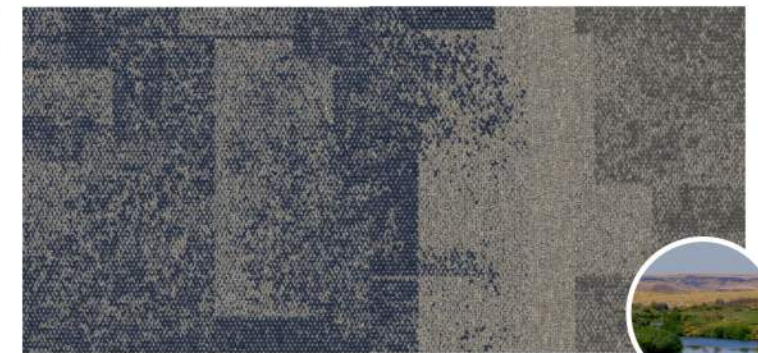
General White Paint  
MFR: Benjamin Moore  
Color: Simply White



Reclaimed Oak Desk Face  
Species: Reclaimed Oak  
Color: Black and Tan



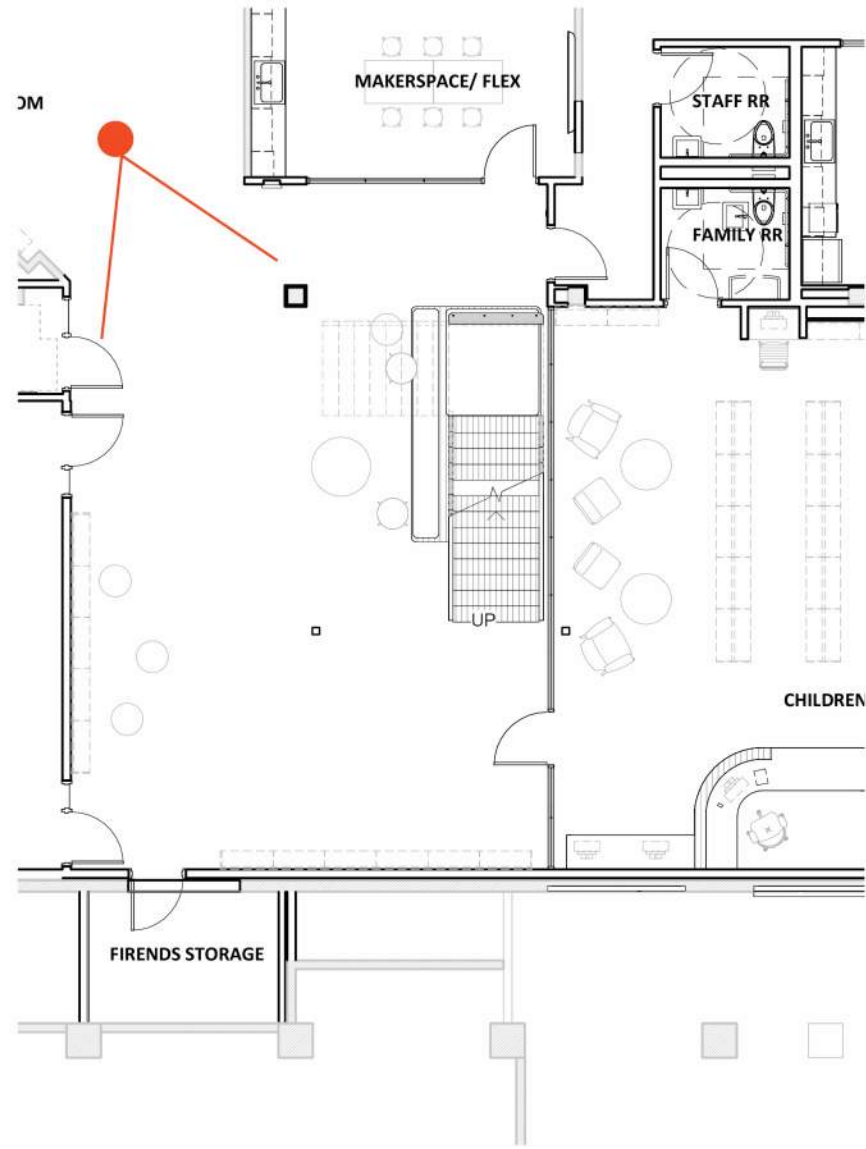
Counter Top  
MFR: Caesarstone  
Color: 4004 Raw Concrete



Gradiated Carpet  
MFR: Interface  
Style: Open Air 404 Accent, Open Air 404 Transition  
Color: Cobalt, Nickel/Cobalt

# Stair + Basement Option 1 - Transparent Glass Window System

VIEW FROM NW STAIR



Stair Character



Elevated Acoustic Ceiling Tile  
Product: Armstrong  
Cirrus Second Look



General White Paint  
MFR: Benjamin Moore  
Color: Simply White



Reclaimed Oak Desk Face  
Species: Reclaimed Oak  
Color: Black and Tan



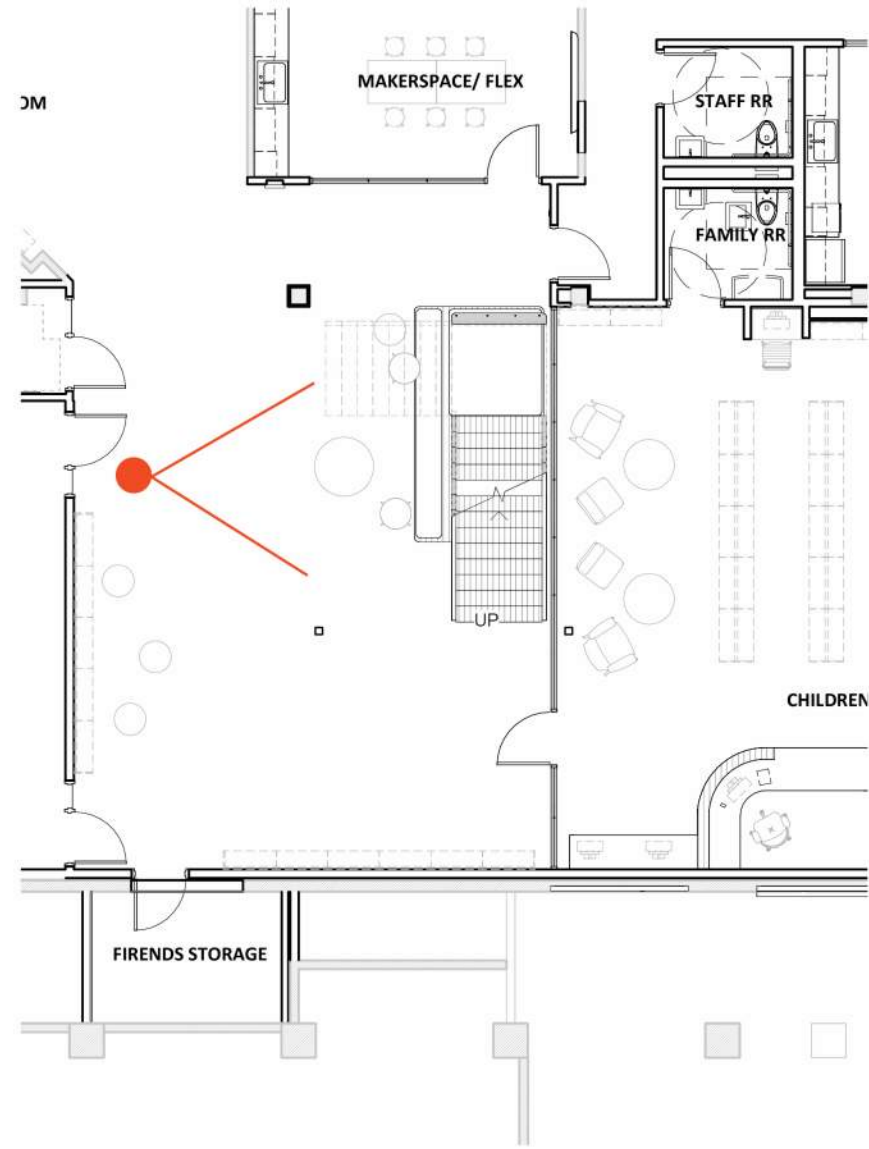
Metal Frame Butt Glazed Glass



Gradiated Carpet  
MFR: Interface  
Style: Open Air 404 Accent, Open Air 404 Transition  
Color: Cobalt, Moss, Nickel/Moss, Nickel/Cobalt

# Stair + Basement Option 1 - Transparent Glass Window System

VIEW FROM COMMUNITY ROOM



Stair Character



Elevated Acoustic Ceiling Tile  
Product: Armstrong  
Cirrus Second Look



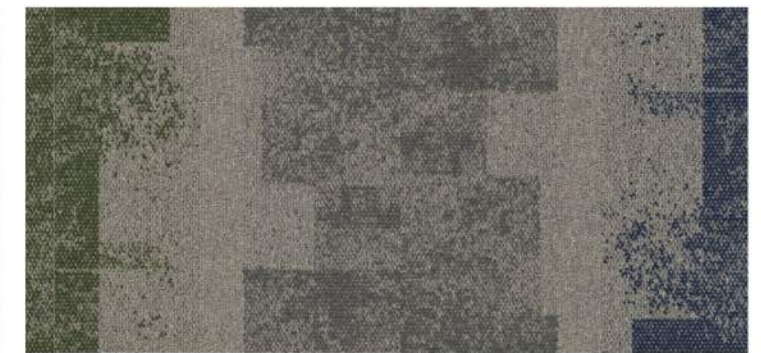
General White Paint  
MFR: Benjamin Moore  
Color: Simply White



Reclaimed Oak Desk Face  
Species: Reclaimed Oak  
Color: Black and Tan



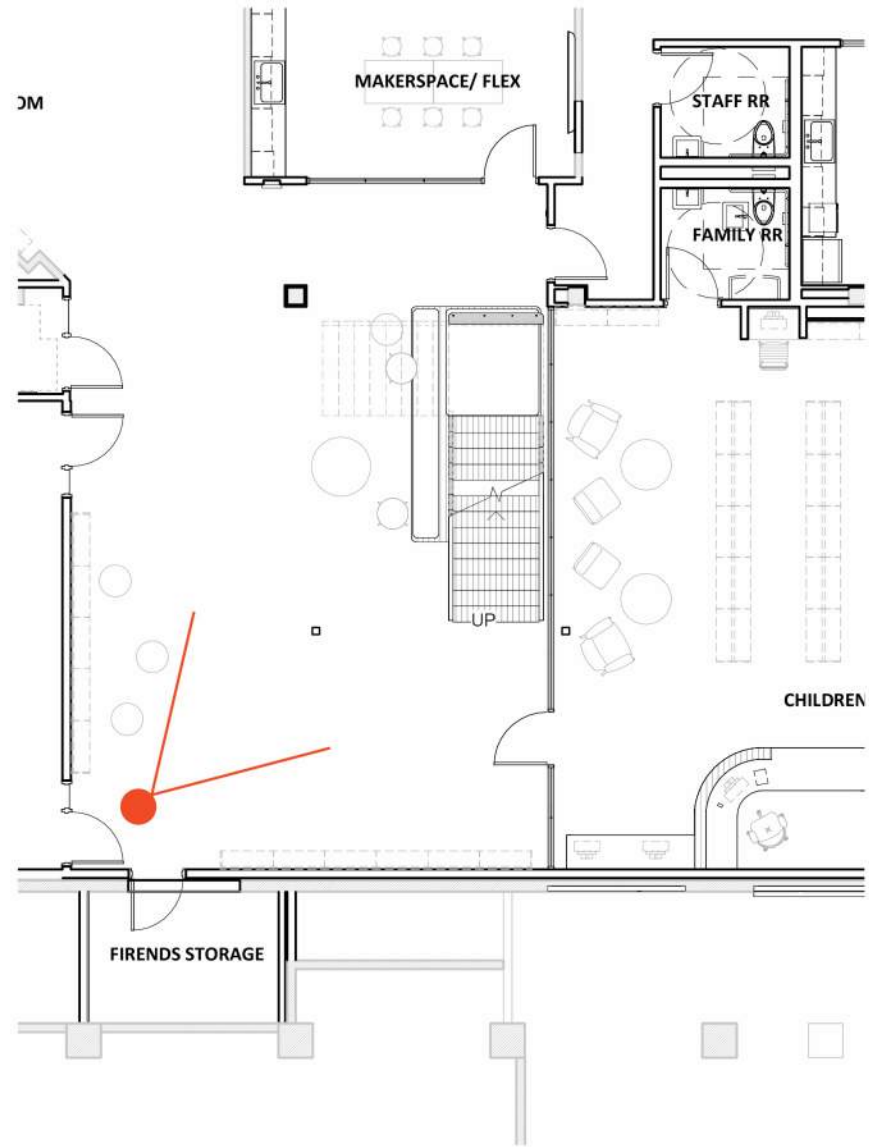
Metal Frame Butt Glazed Glass



Gradiated Carpet  
MFR: Interface  
Style: Open Air 404 Accent, Open Air 404 Transition  
Color: Cobalt, Moss, Nickel/Moss, Nickel/Cobalt

# Stair + Basement Option 1 - Transparent Glass Window System

VIEW FROM SW CORNER



Stair Character



Elevated Acoustic Ceiling Tile  
Product: Armstrong  
Cirrus Second Look



General White Paint  
MFR: Benjamin Moore  
Color: Simply White



Reclaimed Oak Desk Face  
Species: Reclaimed Oak  
Color: Black and Tan



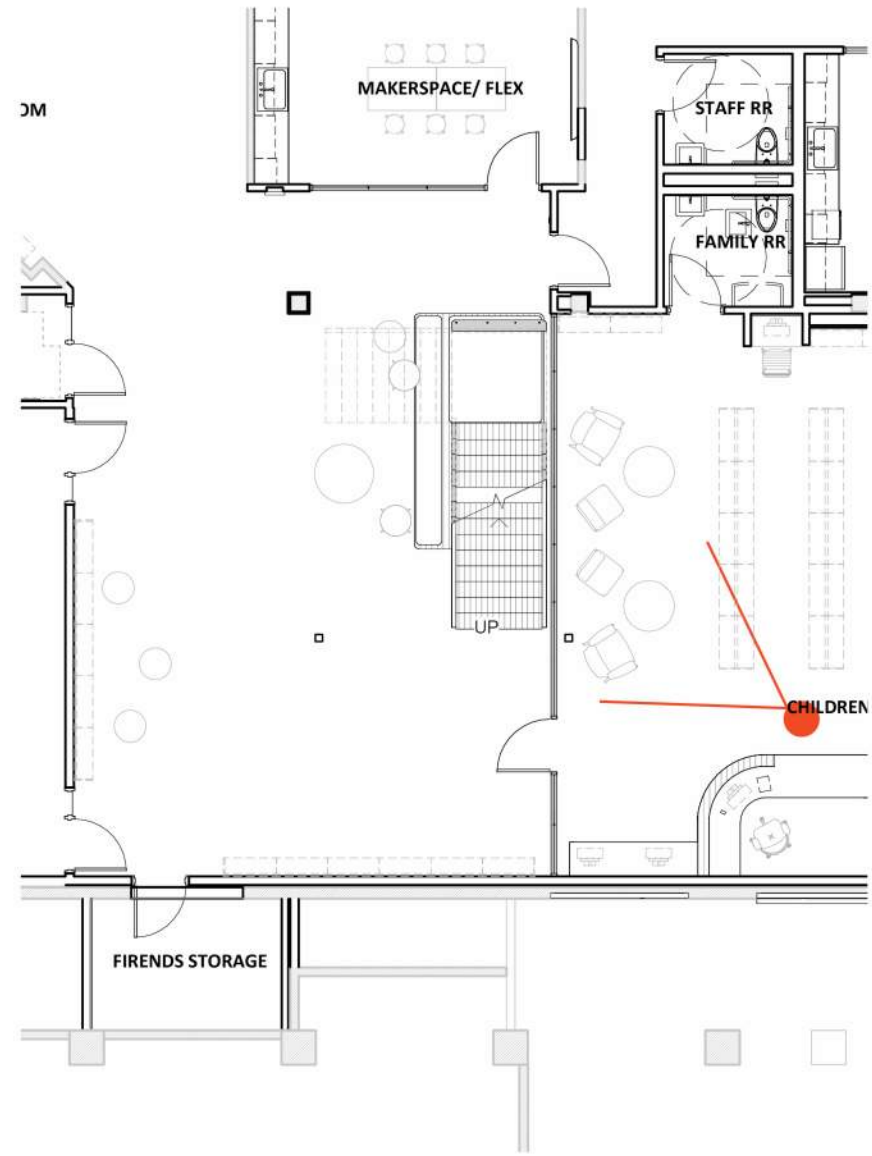
Metal Frame Butt Glazed Glass



Gradiated Carpet  
MFR: Interface  
Style: Open Air 404 Accent, Open Air 404 Transition  
Color: Cobalt, Moss, Nickel/Moss, Nickel/Cobalt

# Stair + Basement Option 1 - Transparent Glass Window System

VIEW FROM CHILDREN'S READING ROOM



Stair Character



Elevated Acoustic Ceiling Tile  
Product: Armstrong  
Cirrus Second Look



General White Paint  
MFR: Benjamin Moore  
Color: Simply White



Reclaimed Oak Desk Face  
Species: Reclaimed Oak  
Color: Black and Tan



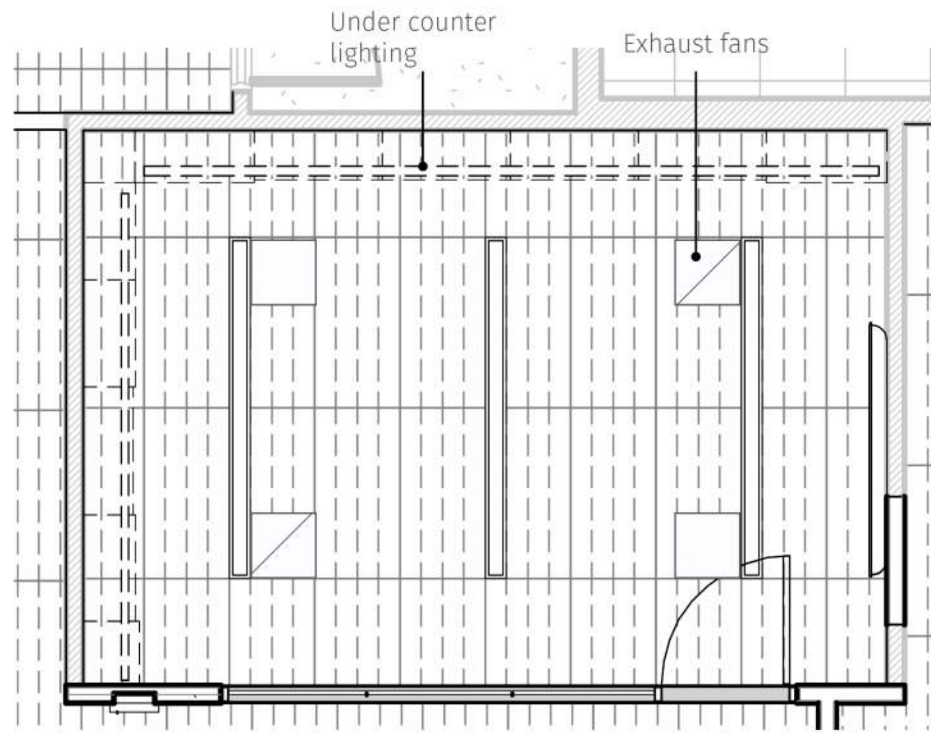
Metal Frame Butt Glazed Glass



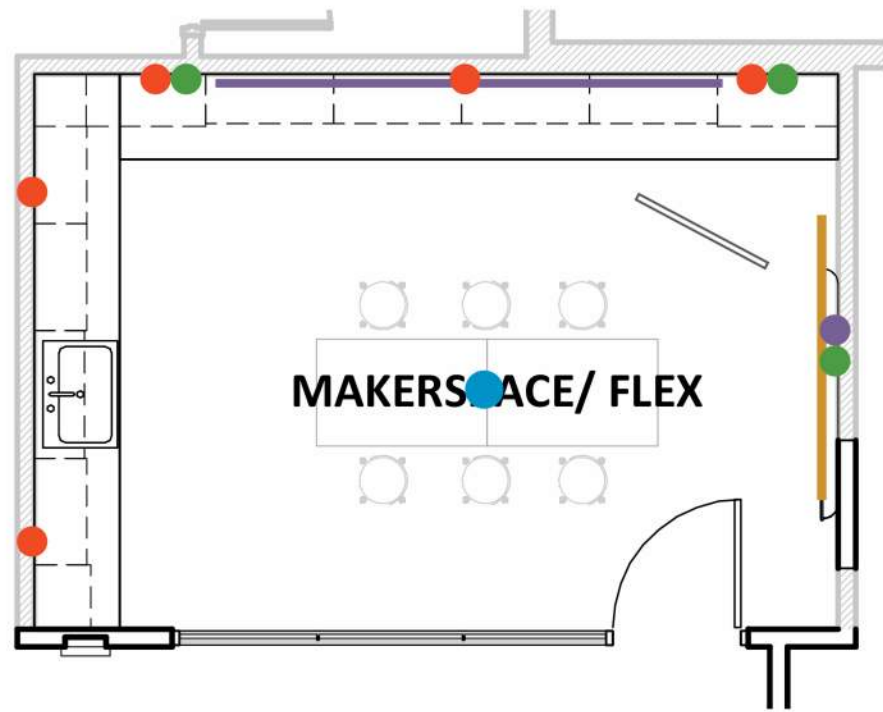
Gradiated Carpet  
MFR: Interface  
Style: Open Air 404 Accent, Open Air 404 Transition  
Color: Cobalt, Moss, Nickel/Moss, Nickel/Cobalt



# Maker Space



RCP



Plan



Window Film  
MFR: 3M™ FASARA™  
Style: Gradation



General White Paint  
MFR: Benjamin Moore  
Color: Simply White



Upper Cabinets Laminate  
MFR: Wilsonart  
Color: Linen



Lower Cabinets Laminate  
MFR: Wilsonart  
Color: Linen



White Metal Pegboard

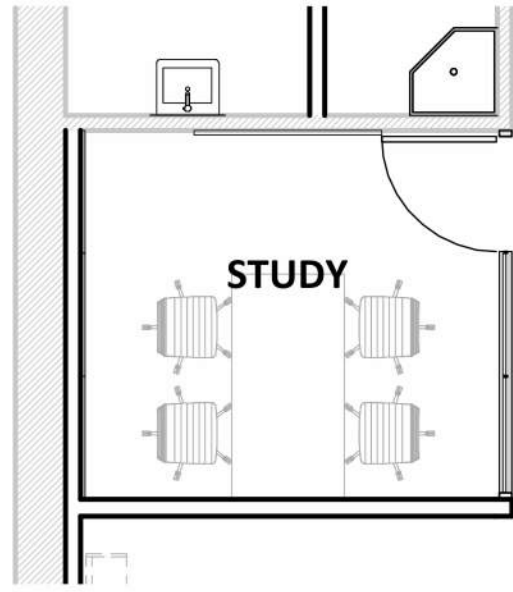


Solid Surface Counter  
MFR: Corian  
Color: Deep Cloud

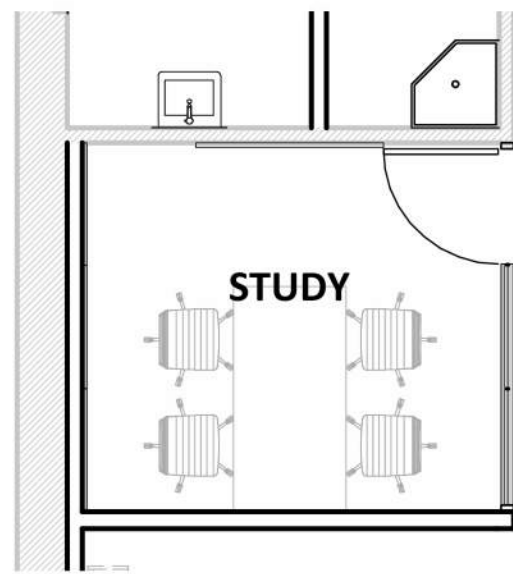


Resilient Flooring  
MFR: Forbo  
Style: Marmoleum Concrete  
Color: 3703 Comet

# Study Room 4 Person



RCP



Plan



Elevated Acoustic Ceiling Tile  
Product: Armstrong  
Cirrus Second Look



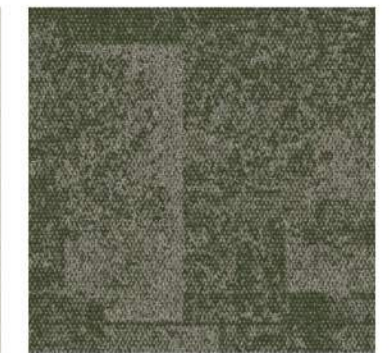
Decorative Pendant  
MFR: NEO  
Color: Standard White  
Size: 24"



General White Paint  
MFR: Benjamin Moore  
Color: Simply White

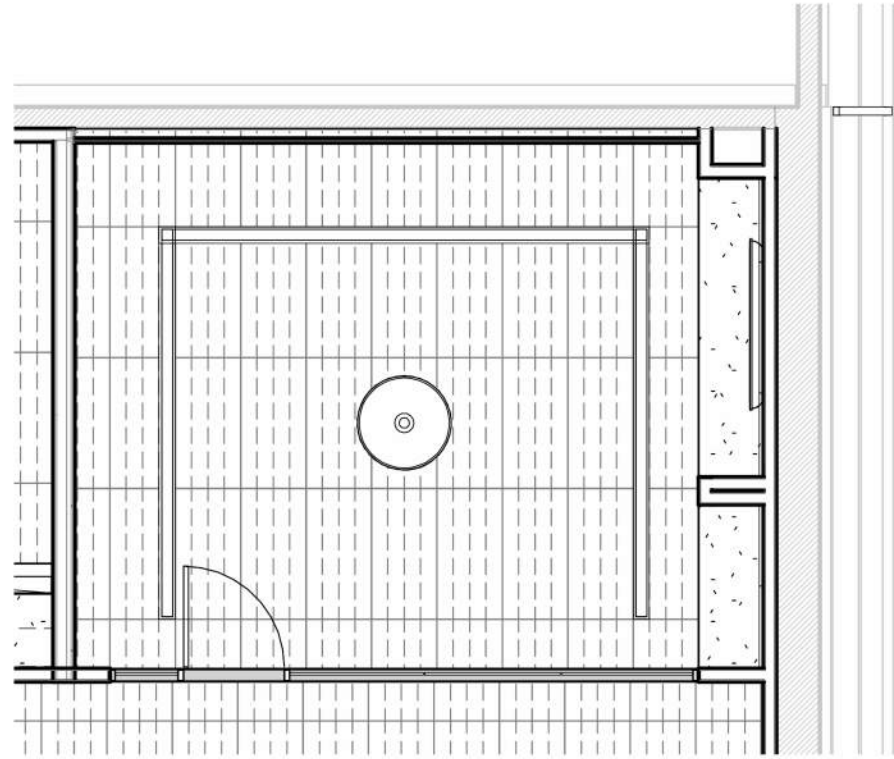


wall Treatment  
MFR: Acoufelt  
Style: Fracture, Maze  
Color: Pistachio

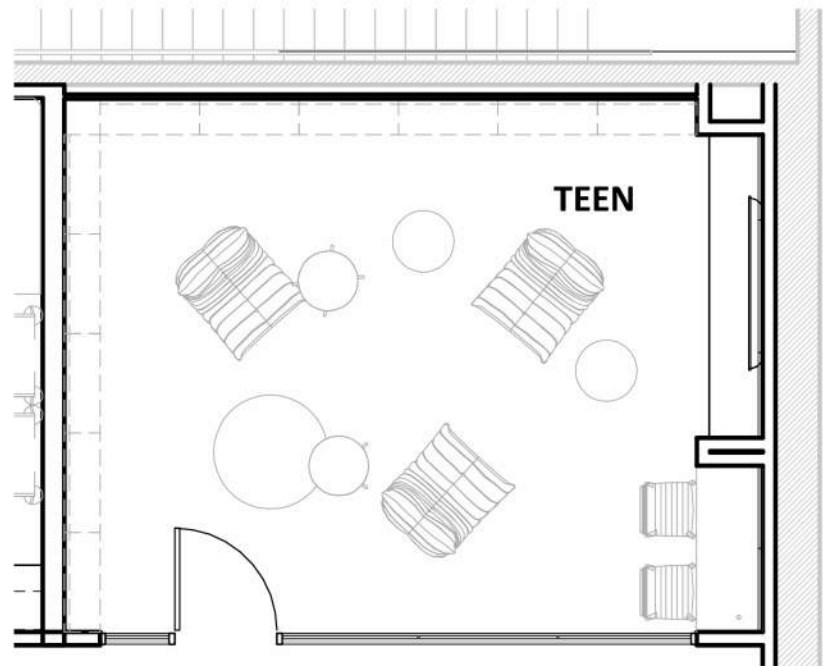


Carpet Tile Area Rug  
MFR: Interface  
Style: Open Air 404 Accent  
Color: Moss

# Teen



RCP



Plan



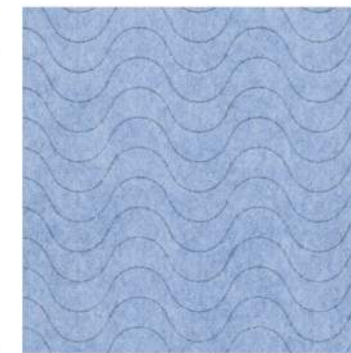
Elevated Acoustic Ceiling Tile  
Product: Armstrong  
Cirrus Second Look



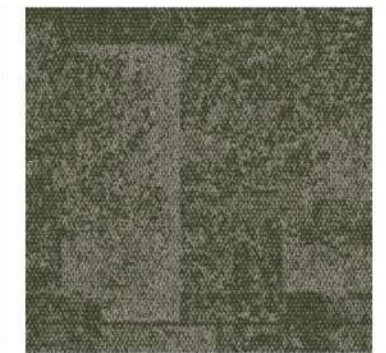
Decorative Pendant  
MFR: NEO  
Color: Standard White  
Size: 24"



General White Paint  
MFR: Benjamin Moore  
Color: Simply White

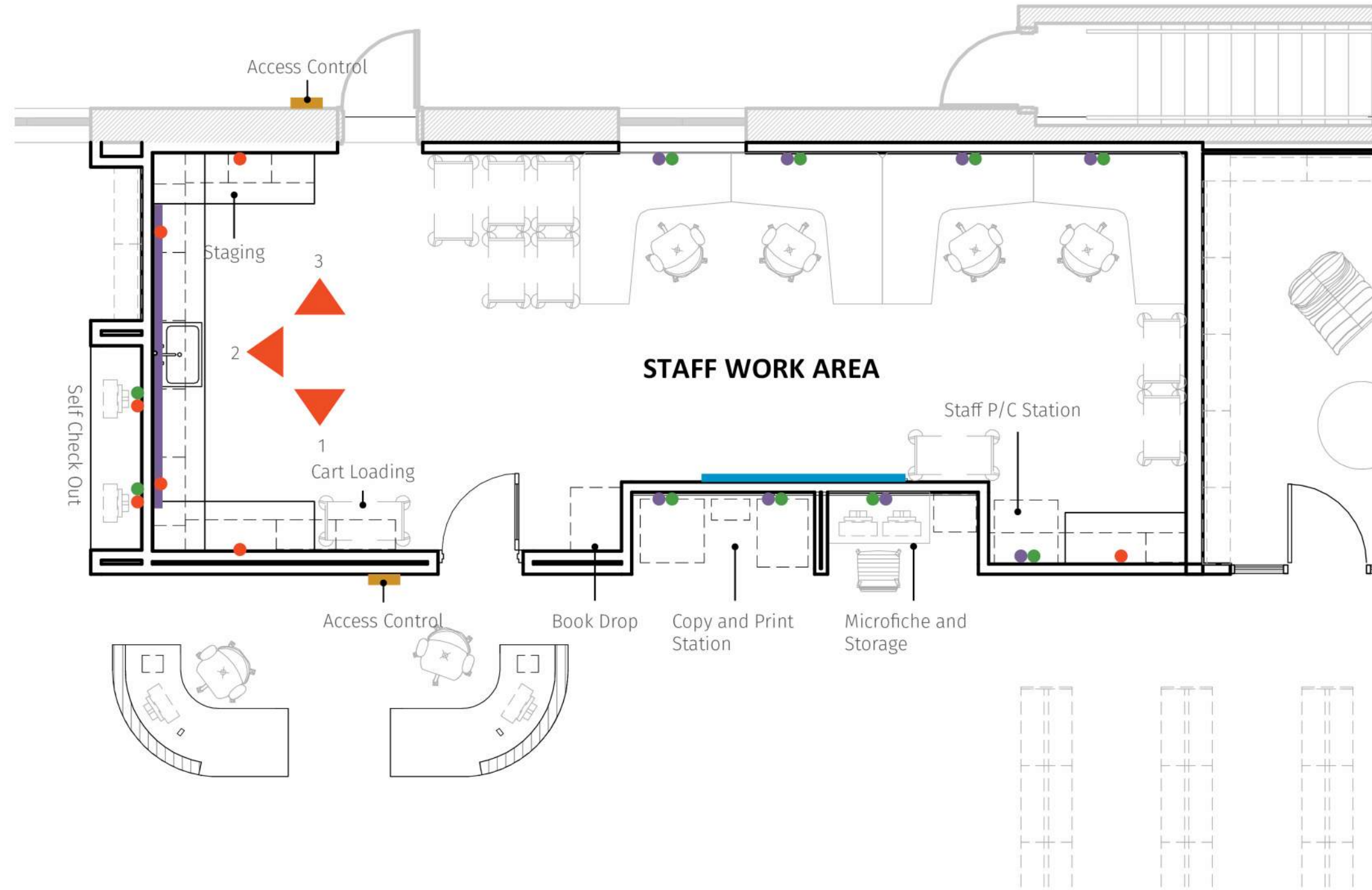


Wall Treatment  
MFR: Acoufelt  
Style: Fracture, Wavelength  
Color: Periwinkle



Gradiated Carpet  
MFR: Interface  
Style: Open Air 404 Accent  
Color: 107137 Moss

# Staff Workroom + Self Serve Niche



- Monitor
- Tack Board
- Marker Board
- Floor Box
- Above Counter Outlet
- Outlet
- Data

\*Staff area currently accommodates 8 reg book carts and 3 large book carts

Plan

# Exterior Option b | City Hall Connection

VIEW FROM STREET



# Exterior Option b | City Hall Connection

VIEW OF ENTRY FROM SIDEWALK



# Exterior Option b.1 | Neutral Base

VIEW OF ENTRY FROM SIDEWALK



# Exterior Exterior Rear

VIEW OF REAR





# Exterior Night at the Library | Neutral Base

VIEW OF ENTRY FROM SIDEWALK





## Library Safety Evaluation

Crime Prevention Through Environmental Design (CPTED)	Citizen Response to Active Shooter Event (CRASE)
Natural Surveillance	Avoid – Be aware of surroundings, recognize threat
Natural Access Control	Deny – Close/lock doors/barricade
Territorial Reinforcement	Defend – Any weapon/right to defend
Maintenance and Management	

### Existing Design (mostly upstairs)

- Cramped/cluttered/dark
- Limited visibility for library staff
- Room split by central office space causing limited visual access on both sides
- Rear entrance/restrooms not in view of front desk
- Very close to front entrance
- No barrier to staff area
- Breakroom is the only possible place to deny or avoid threat



## Proposed Design

- Open floorplan
- Increased distance to front door
- Better sightlines
- Centralized stair increases visibility to high traffic areas
- Doors create clear lines between staff/public spaces
- Children's area glass wall increases visibility and lines of sight
  
- Suggested camera feeds be available to staff on a real-time basis

In summary, it is my opinion, which is based on the principles listed in this report, that the existing library floorplan lacks adequate protection of patrons and staff in many ways. The proposed new floorplan will greatly increase safety and security, allow for reasonable reaction to threats, and create a safe, welcoming environment for our citizens to use and enjoy.