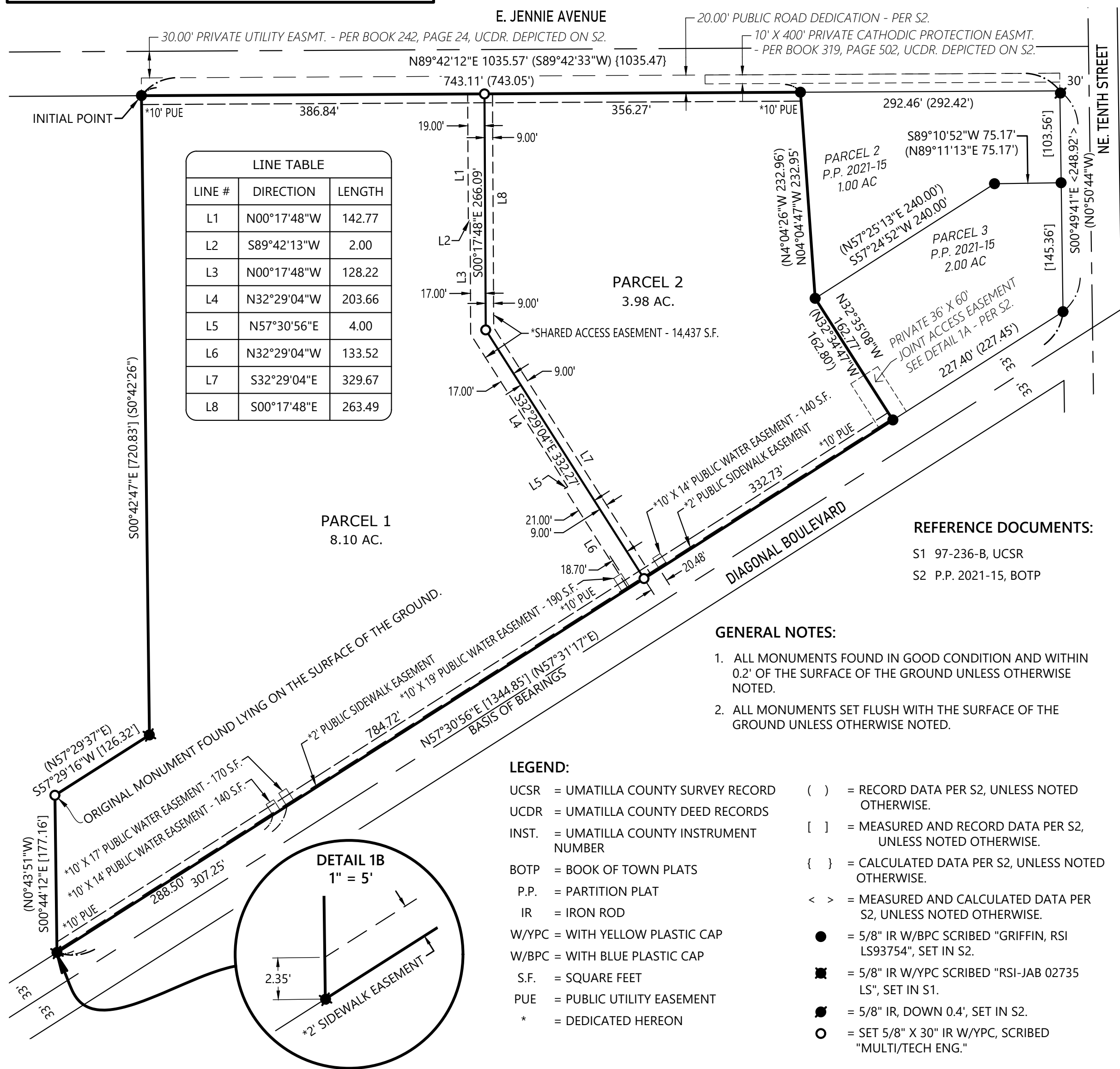



PARTITION OF PARCEL 1, PARTITION PLAT 2021-15  
IN THE NE 1/4 SEC. 11, T. 4 N., R. 28 E., W.M.  
CITY OF HERMISTON, UMATILLA COUNTY, OREGON  
FOR: THE HUB HERMISTON, LLC.



## UMATILLA COUNTY TAX COLLECTOR

UCSR = UMATILLA COUNTY SURVEY RECORD  
UCDR = UMATILLA COUNTY DEED RECORDS  
INST. = UMATILLA COUNTY INSTRUMENT  
NUMBER  
BOTP = BOOK OF TOWN PLATS  
P.P. = PARTITION PLAT  
IR = IRON ROD  
W/YPC = WITH YELLOW PLASTIC CAP  
W/BPC = WITH BLUE PLASTIC CAP  
S.F. = SQUARE FEET  
PUE = PUBLIC UTILITY EASEMENT  
\* = DEDICATED HEREON

SHEET 1 OF 1