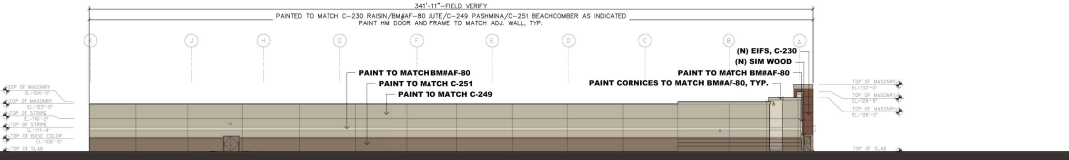
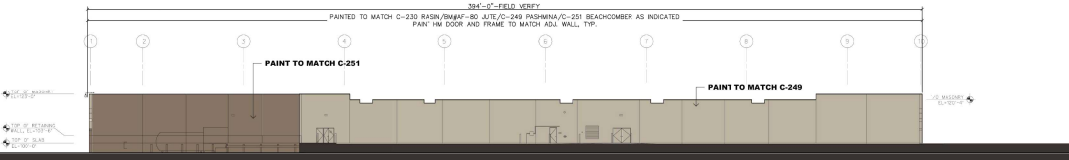


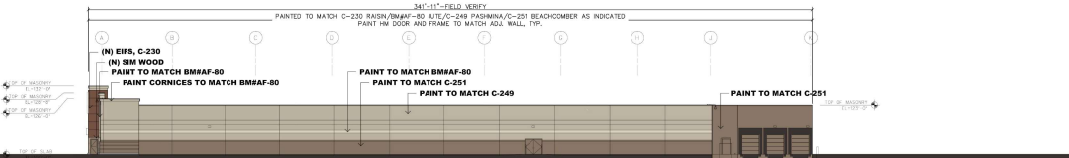
West Elevation



North Elevation



East Elevation



South Elevation

COLOR KEY:

- (BM#AF-80) JUTE
- C-249 (BM #AF-100) PASHMINA
- C-251 (BM #0993) BEACHCOMBER
- C-230 (BM#1237) RAISIN
- SIMULATED WOOD; NICHHA ROUGHSAWN PANEL "SMOKE" COLOR.

NOTE:

- *STORE EXTERIOR WALLS ARE PRIMARILY CMU
- *EXISTING SPHERICAL BOLLARDS REPAINT C-1 RED U.N.O.
- *NEW LIGHT FIXTURES: OCL "NEWPORT" @ EXSTG. SCONCES LOCATIONS
- *BEN-2 : MODERN, COLOR.....SILVER

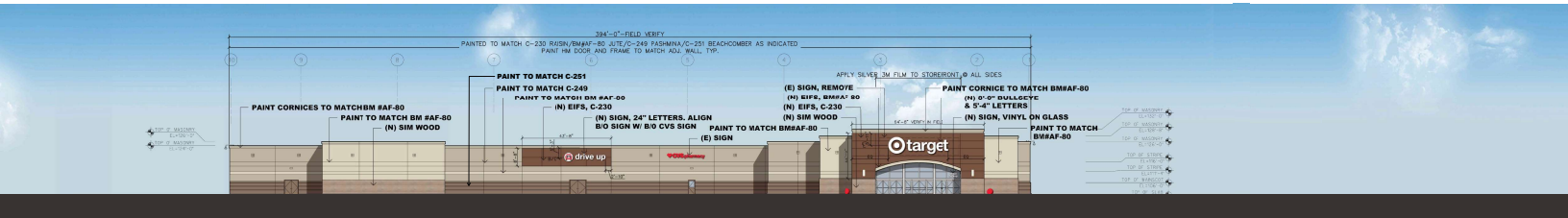
GENERAL NOTE

- * AREA TO BE PAINTED STARTS AT TOP OF CURB OR REVEAL AND CONTINUES TO TOP OF PARAPET/FLASHING OR REVEAL. PAINT COLOR AND FINISH TRANSITIONS OCCUR AT EXISTING VERTICAL CONTROL JOINTS OR AT INSIDE BUILDING CORNERS, U.N.O.
- * ALL EXISTING WALL-MOUNTED ITEMS TO BE PAINTED TO MATCH ADJ. WALL SURFACE, U.N.O.
- * PATCH ALL VISIBLE HOLES FROM MOUNTING OF REMOVED SIGNS WITH LIKE MATERIALS. RESTORE WALL SURFACE TO "LIKE NEW" APPEARANCE.
- * SILVER 3M FILM APPLIED TO METAL TRIM AT STOREFRONT ENTRANCE (NO WINDOWS)



T-1460 Homewood, IL: Remodel - Exterior Design

RSP Architects Ltd.
August 17, 2022



BENJAMIN MOORE #AF-80 JUTE



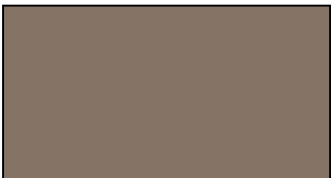
C-230 RAISIN
 BENJAMIN MOORE #1237



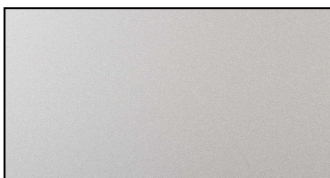
C-249 PASHMINA
 BENJAMIN MOORE #AF-100



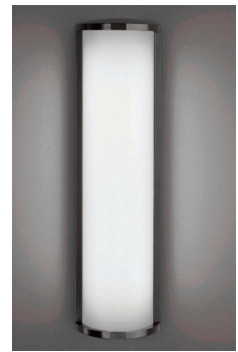
NICHIHA FIBER-CEMENT. ROUGHSAWN PANEL, "SMOKE" FINISH.



C-251 BEACHCOMBER
 BENJAMIN MOORE #0993



3M STOREFRONT FILM - SILVER COLOR



OCL "NEWPORT" SCONCE, 36" HEIGHT, SILVER METALLIC FINISH. COLOR TEMP 2700K



T-1460 Homewood, IL: Remodel - Exterior Design

PROPOSED COLORS & MATERIALS

RSP Architects Ltd.
 August 17, 2022