

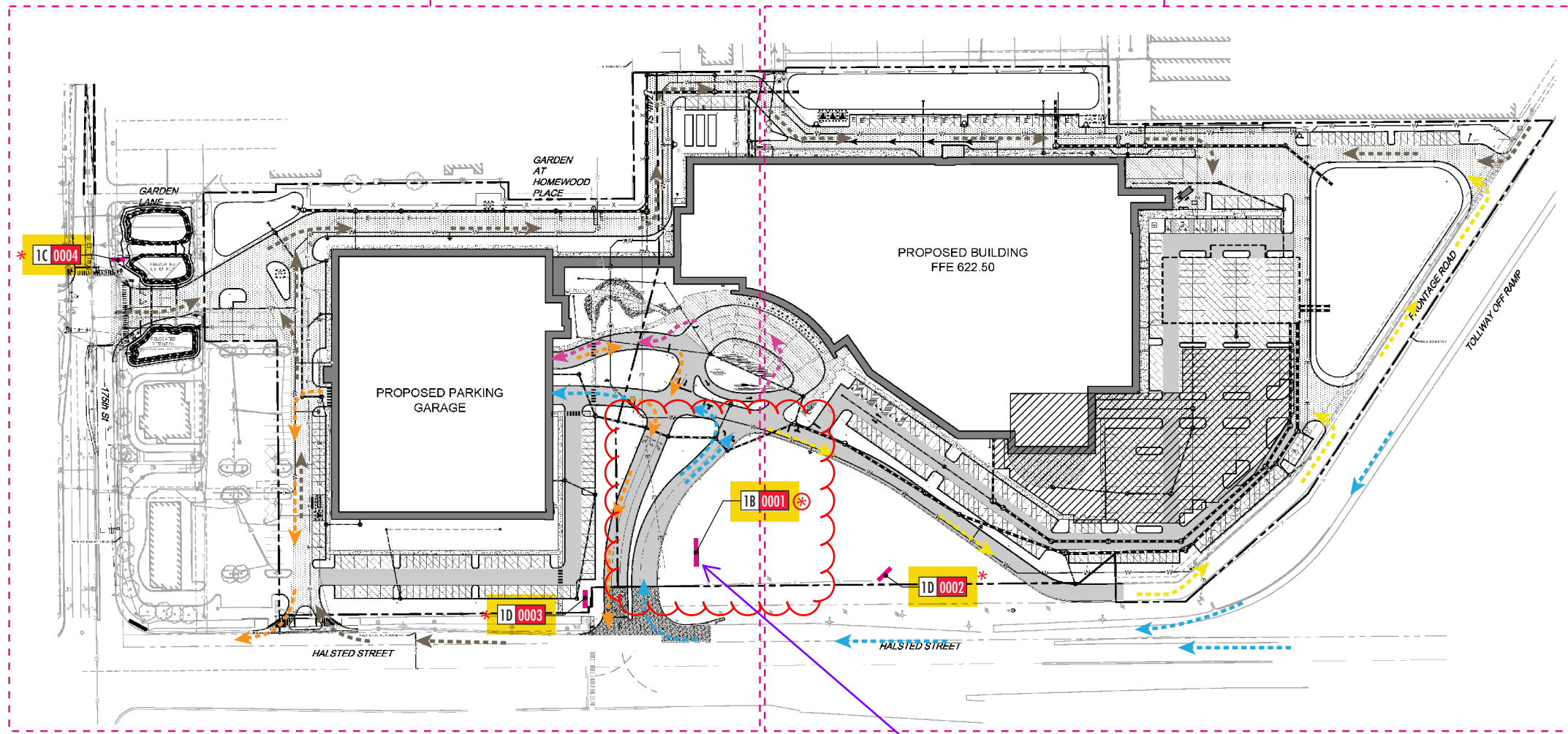
LEGEND:

- 1B Site ID (Halstead Ave.)
- 1C Site ID (175th Street)
- 1D Homewood/ E. Hazel Crest Sign

- POWER REQUIRED AT SIGN LOCATION

SOUTH PLAN

NORTH PLAN



SITE SIGNAGE LOCATION PLAN



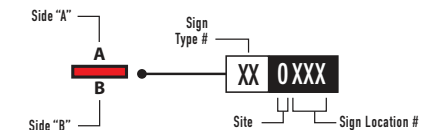
SITE PLAN SHOWN FOR REFERENCE ONLY - UPDATED SITE PLAN TO BE PROVIDED

Pylon

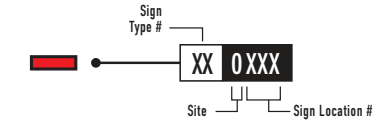
- * Electrical Power Required
- Data Required
- ← Primary Guest Traffic In
- ← Primary Guest Traffic Out
- ← VIP / Valet Traffic
- ← Secondary/Bus/Service Traffic
- ← Employee Traffic

KEY:

Double-Sided Sign



Single-Sided Sign



* See Message Schedule for Sign Type (ST) and message of any particular sign.

109 Vickerh Street . Roswell, GA 30075-4926 . Phone 770.645.2828

PROJECT: Wind Creek Casino - Chicago: Bid Set

FILE NAME: Exterior & Interior Signage

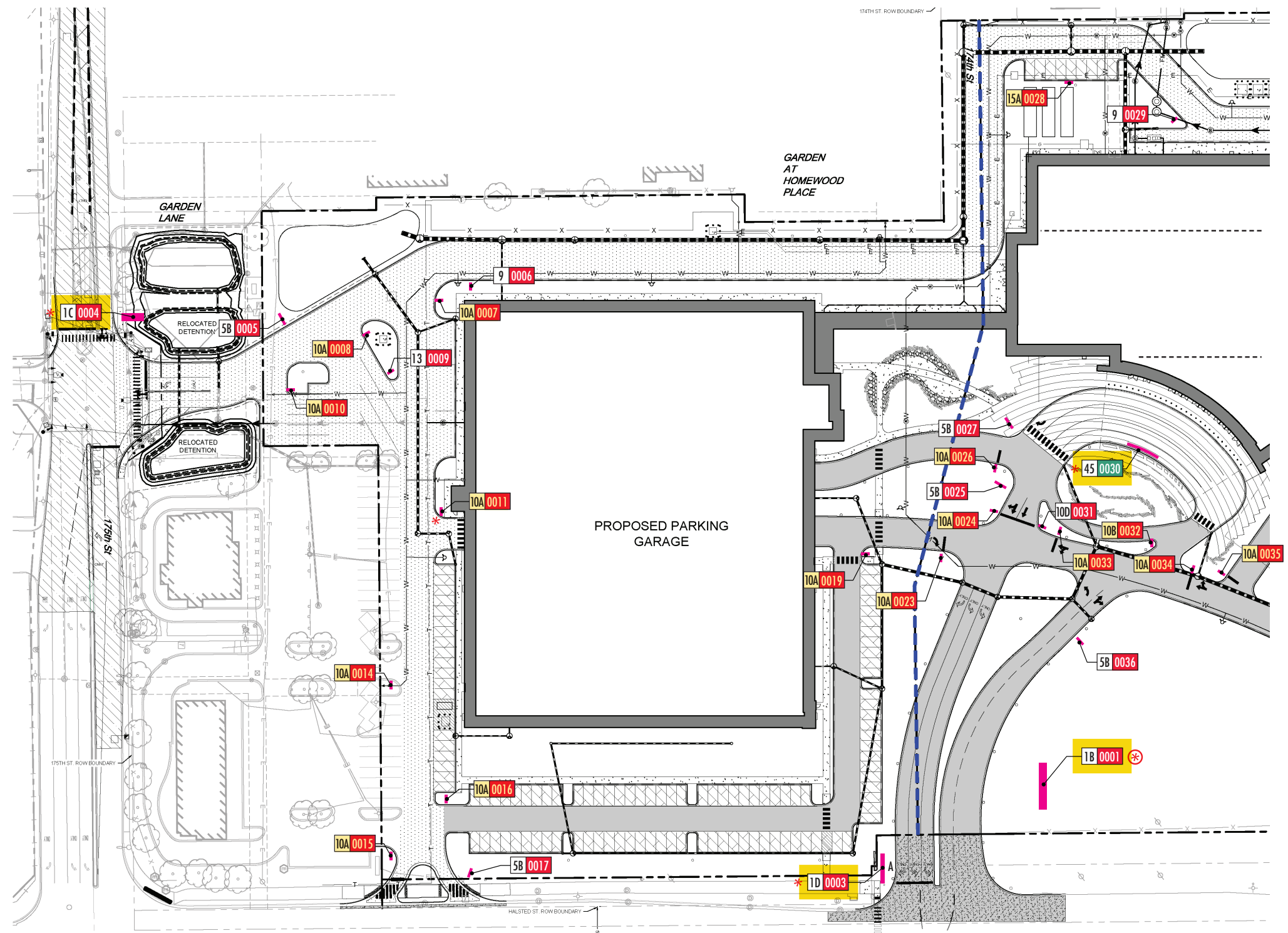
TITLE: Site Signage Location Plans

PROJECT NO: 22.125

DATE: 2024.03.12

REVISIONS:

 - POWER REQUIRED AT SIGN LOCATION

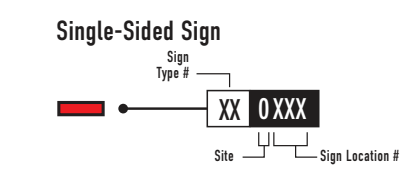
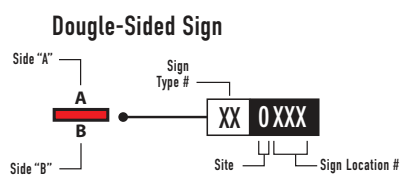


LEGEND:

- 1B Site ID (Halstead Ave.)
- 1C Site ID (175th Street)
- 1D Homewood/ E. Hazel Crest Sign
- 5B Vehicular Directional
- 9 Service Directional
- 10A Regulatory Sign - STOP
- 10B Regulatory Sign - DO NOT ENTER
- 10C Regulatory Sign - YIELD
- 10D Regulatory Sign - TRUCKS ONLY
- 13 Bus Parking ID
- 14 Handicapped Parking Sign
- 15A Reserved (Employee) Parking Sign
- 15B Reserved (EV) Parking Sign
- 15C Reserved IGB Parking Sign
- 40 Building Logo - Level 16
- 45 ID @ Porte Cochere

- * Electrical Power Required
- Data Required

KEY:



* See Message Schedule for Sign Type (ST) and message of any particular sign.

SITE PLAN SHOWN FOR REFERENCE ONLY - UPDATED SITE PLAN TO BE PROVIDED

SITE SIGNAGE LOCATION PLAN (SOUTH) 

PROJECT NO: 22.125
DATE: 2024.03.12
REVISIONS:

109 Vickerh Street . Roswell, GA 30075-4926 . Phone 770.645.2828
PROJECT: Wind Creek Casino - Chicago: Bid Set
FILE NAME: Exterior & Interior Signage

TITLE: Site Signage Location Plans

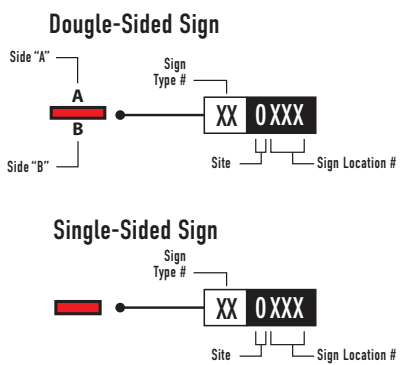
These drawings are for the sole purpose of expressing visual design intent and are not intended for actual fabrication purposes.

LEGEND:

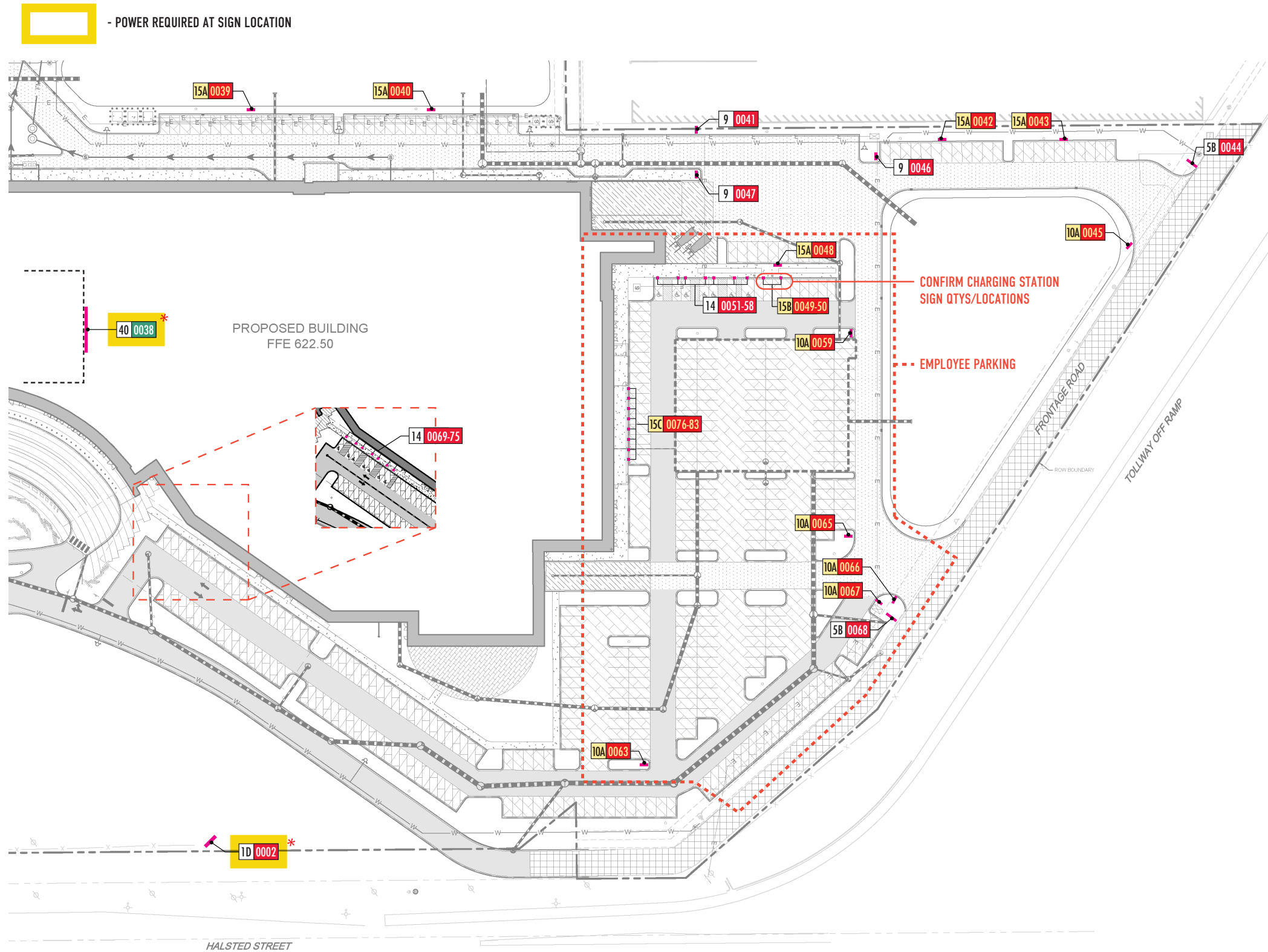
- 18 Site ID (Halstead Ave.)
- 1C Site ID (175th Street)
- 1D Homewood/ E. Hazel Crest Sign
- 5B Vehicular Directional
- 9 Service Directional
- 10A Regulatory Sign - STOP
- 10B Regulatory Sign - DO NOT ENTER
- 10C Regulatory Sign - YIELD
- 10D Regulatory Sign - TRUCKS ONLY
- 13 Bus Parking ID
- 14 Handicapped Parking Sign
- 15A Reserved (Employee) Parking Sign
- 15B Reserved (EV) Parking Sign
- 15C Reserved IGB Parking Sign
- 40 Building Logo - Level 16
- 45 ID @ Porte Cochere

- * Electrical Power Required
- Data Required

KEY:



* See Message Schedule for Sign Type (ST) and message of any particular sign.



SITE PLAN SHOWN FOR REFERENCE ONLY - UPDATED SITE PLAN TO BE PROVIDED

SITE SIGNAGE LOCATION PLAN (NORTH) 

PROJECT NO: 22.125

DATE: 2024.03.12

REVISIONS:

109 Vickerh Street . Roswell, GA 30075-4926 . Phone 770.645.2828

PROJECT: Wind Creek Casino - Chicago: Bid Set

FILE NAME: Exterior & Interior Signage

TITLE: Site Signage Location Plans

These drawings are for the sole purpose of expressing visual design intent and are not intended for actual fabrication purposes.