



173936
Wind Creek
Chicago Southland
Parking Garage Signage
June 4, 2024



Headquarters
425 North 3rd Street
Reading, PA 19601
610.898.9600
sales@lhsigns.com

www.lhsigns.com

Colors | Materials

P13 Pink
To Match: MP08744

V13 Perfect Match Red
3M 7725-263

P12 Beige
To Match: MP04474

V12 Oramask 810 Stencil Film

P11 White Diamond
To Match: MP04561

V11 Translucent Cardinal Red
3M 3630-53

P10 Blue Sapphires
To Match: MP13912

V10 Diffuser
3M 3635-30

P9 Green Emeralds
To Match: MP01068

V9 Frosted Vinyl
3M Dusted Crystal

P8 Red Rubies
To Match: MP12602

V8 Reflective Red
3M 680-72

P7 Gold Nuggets
To Match: MP10190

V7 Reflective Black
3M 680-85

P6 Black - **Satin Finish**
To Match: MP59647

V6 Black
3M 180C-12

D6 Green
To Match: PMS 342C

P5 Red - **Satin Finish**
To Match: MP08937

V5 Cardinal Red
3M 180C-53

D5 Wood Print

P4 Grey 2
To Match: MP07102

V4 Dark Grey
3M 180C-41

M4 Rowmark ADA Alternative
3X1-307

D4 Blue
To Match: PMS 293C

P3 Grey 1
To Match: MP03730

V3 Double-Layer Translucent Frosted
3M Frosted Crystal Overlaid on 3M Dusted Crystal

M3 #7328 Trans. White Acrylic

D3 Red 1
To Match: PMS 207C

P2 Bronze
To Match: MP20509

V2 Reflective White
3M 680-10

M2 Poured Resin
To Match: M1

D2 Black

P1 White - **Satin Finish**
To Match: MP03549

V1 White
3M 7725-10

M1 First Surface/Edges Sand-Blasted Acrylic

D1 White

PAINT

VINYL

MATERIAL FINISHES

DIGITAL PRINT



ABCDEFGHIJKLMNOPQRSTUVWXYZ
abcdefghijklmnopqrstuvwxyz
1234567890

TYPEFACE 5
Futura Bold

ABCDEFGHIJKLMNOPQRSTUVWXYZ
abcdefghijklmnopqrstuvwxyz
1234567890

TYPEFACE 4
GOTHAM BOLD

ABCDEFGHIJKLMNOPQRSTUVWXYZ
 abcdefghijklmnopqrstuvwxyz
 1234567890

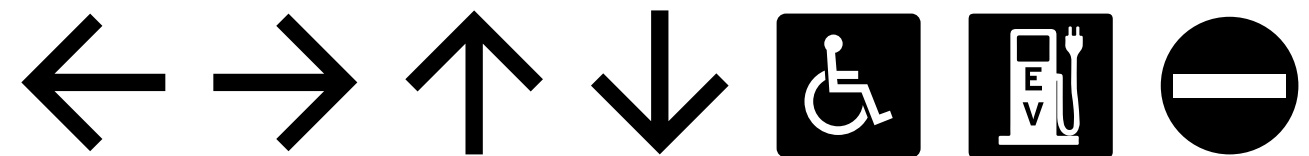
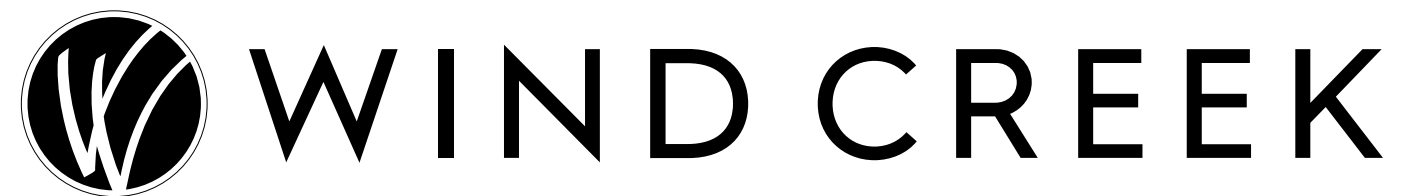
TYPEFACE 3
GOTHAM CONDENSED BOOK

ABCDEFGHIJKLMNOPQRSTUVWXYZ
 abcdefghijklmnopqrstuvwxyz
 1234567890

TYPEFACE 2
GOTHAM NARROW BOOK

ABCDEFGHIJKLMNOPQRSTUVWXYZ
 abcdefghijklmnopqrstuvwxyz
 1234567890

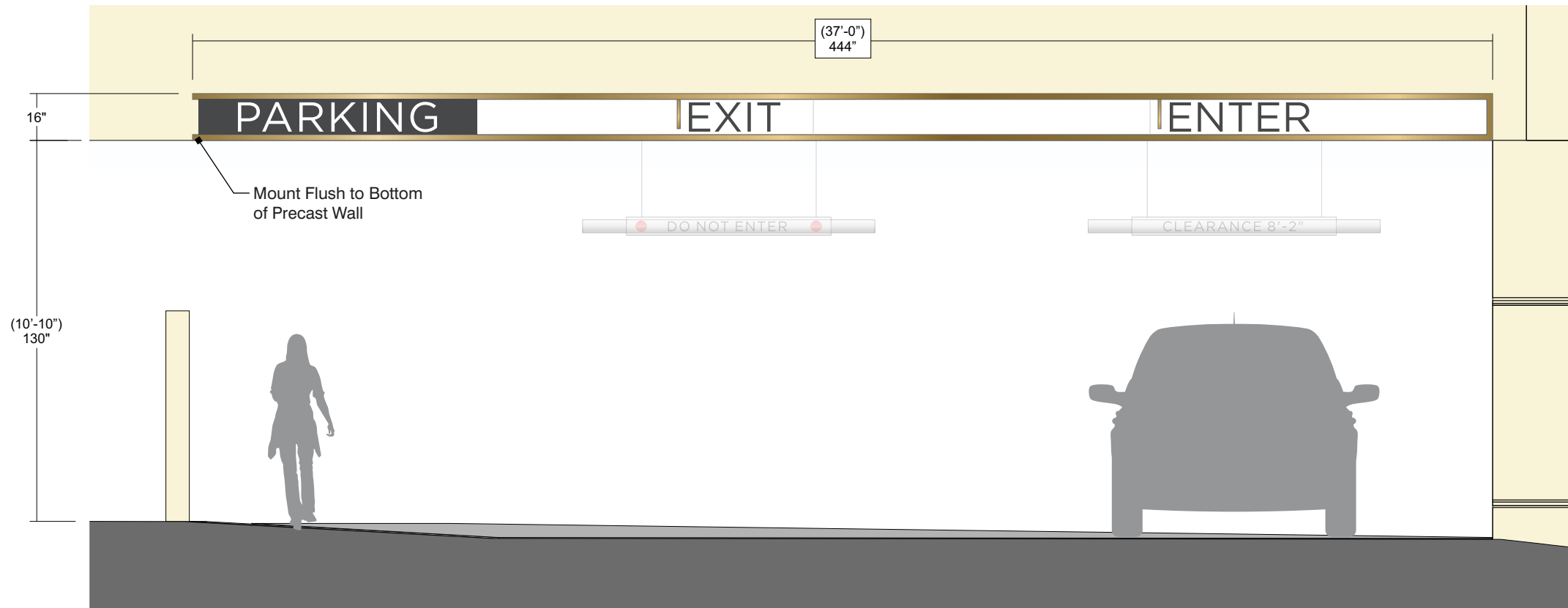
TYPEFACE 1
GOTHAM BOOK



SYMBOLS

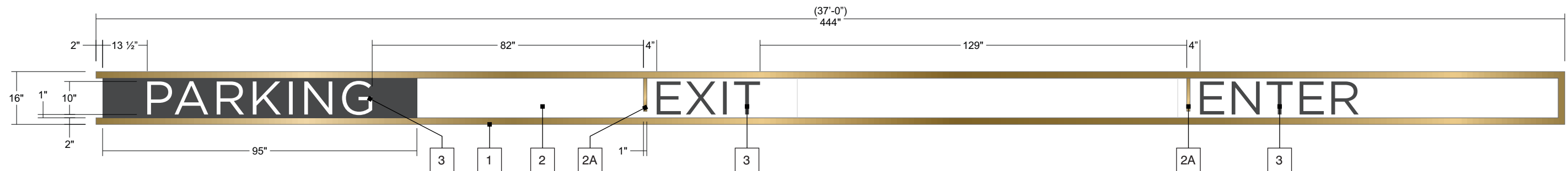
20A | Primary Parking Entry/Exit

S/F | Non-Illuminated | Qty: 1



- 1 **Tube Frame**
Fabricated 1 1/2" X 2" X 1/8" Aluminum Tube Frame; Color: P2;
- 2 **Face**
.090" Aluminum; Color: P1 & P4;
- 2A **Face Accent**
1/4" Clear Acrylic; Color: P2; Secured to Face w/ VHB;
- 3 **FCO Copy**
1/2" Clear Acrylic; Color: P1 & P4; Secured to Face w/ VHB;
- * See Drawing "173936_ST20A" for Fabrication & Install Details;

2 **Front Elevation**
Scale: 1/4" = 1'



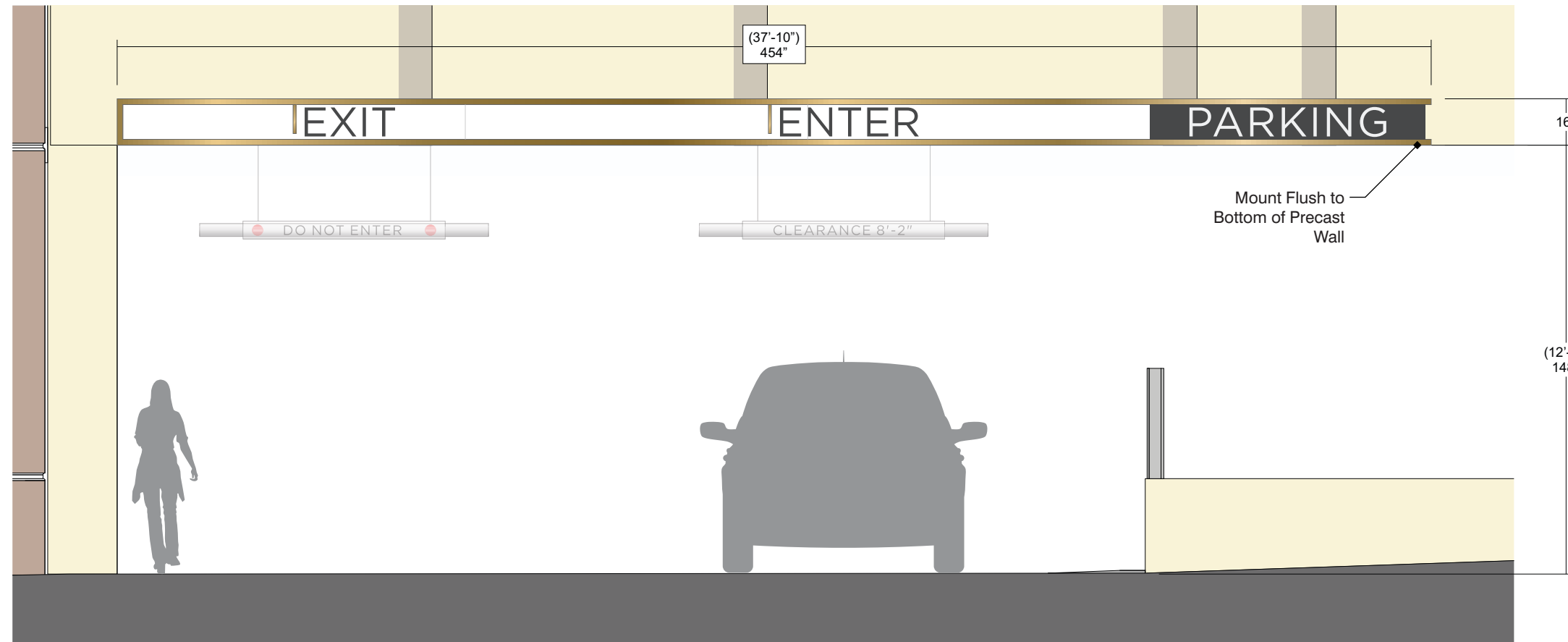
1 **Front View**
Scale: 3/8" = 1'

THIS PAGE LEFT INTENTIONALLY BLANK



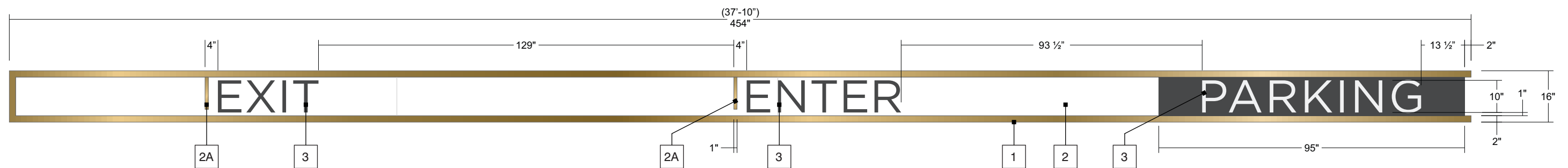
20B | Secondary Parking Entry/Exit

S/F | Non-Illuminated | Qty: 1



- 1 **Tube Frame**
Fabricated 1 1/2" X 2" X 1/8" Aluminum Tube Frame; Color: P2;
- 2 **Face**
.090" Aluminum; Color: P1 & P4;
- 2A **Face Accent**
1/4" Clear Acrylic; Color: P2; Secured to Face w/ VHB;
- 3 **FCO Copy**
1/2" Clear Acrylic; Color: P1 & P4; Secured to Face w/ VHB;
- * See Drawing "173936_ST20B" for Fabrication & Install Details;

2 **Front Elevation**
Scale: 1/4" = 1'



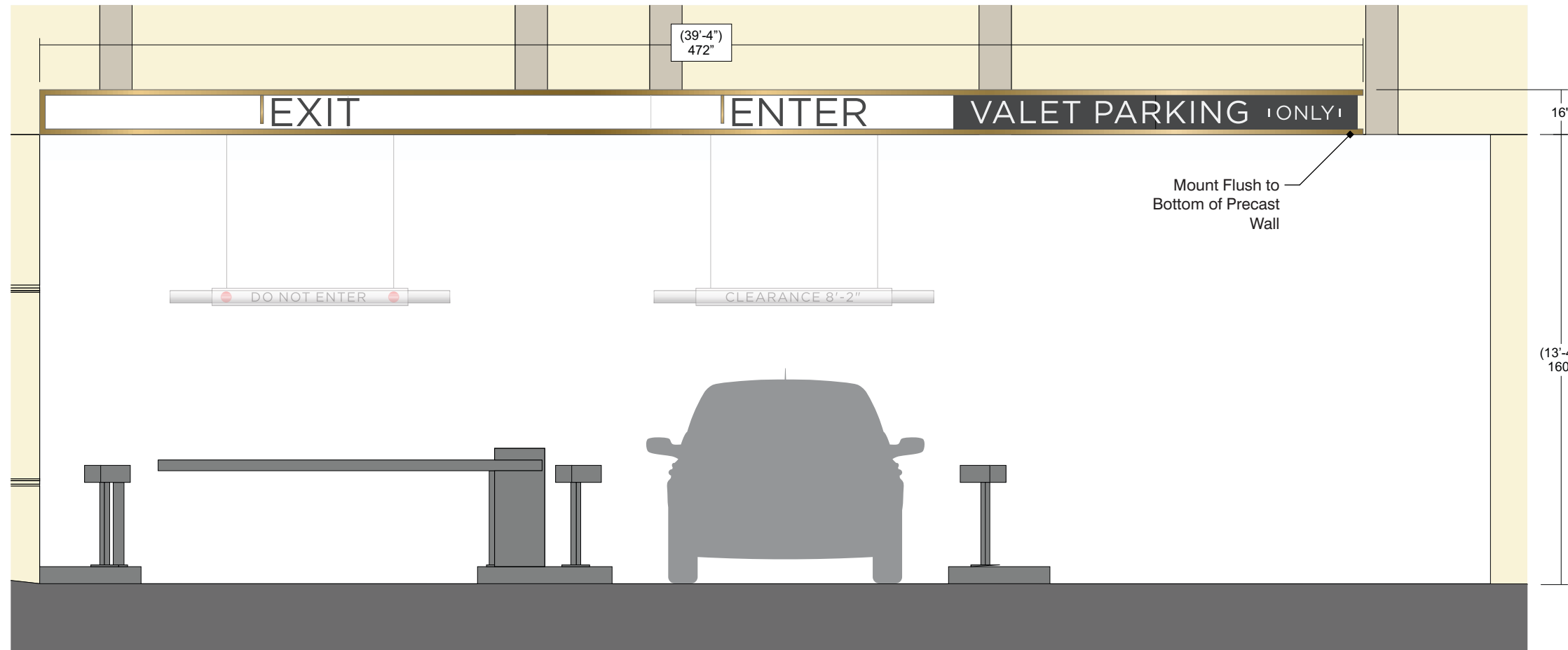
1 **Front View**
Scale: 3/8" = 1'

THIS PAGE LEFT INTENTIONALLY BLANK



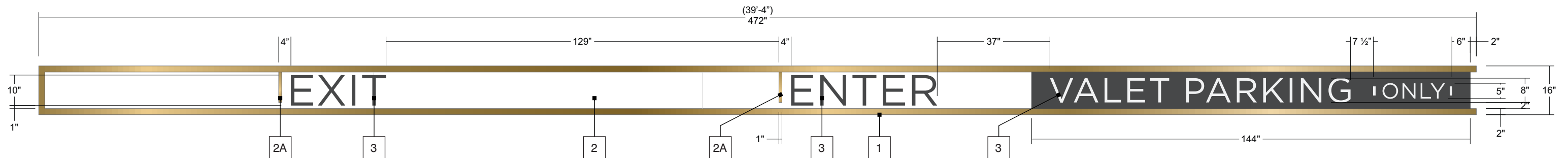
20C | Valet Parking Entry/Exit

S/F | Non-Illuminated | Qty: 1



- 1 **Tube Frame**
Fabricated 1 1/2" X 2" X 1/8" Aluminum Tube Frame; Color: P2;
- 2 **Face**
.090" Aluminum; Color: P1 & P4;
- 2A **Face Accent**
1/4" Clear Acrylic; Color: P2; Secured to Face w/ VHB;
- 3 **FCO Copy**
1/2" Clear Acrylic; Color: P1 & P4; Secured to Face w/ VHB;
- * See Drawing "173936_ST20C" for Fabrication & Install Details;

2 **Front Elevation**
Scale: 1/4" = 1'



1 **Front View**
Scale: 3/8" = 1'

THIS PAGE LEFT INTENTIONALLY BLANK



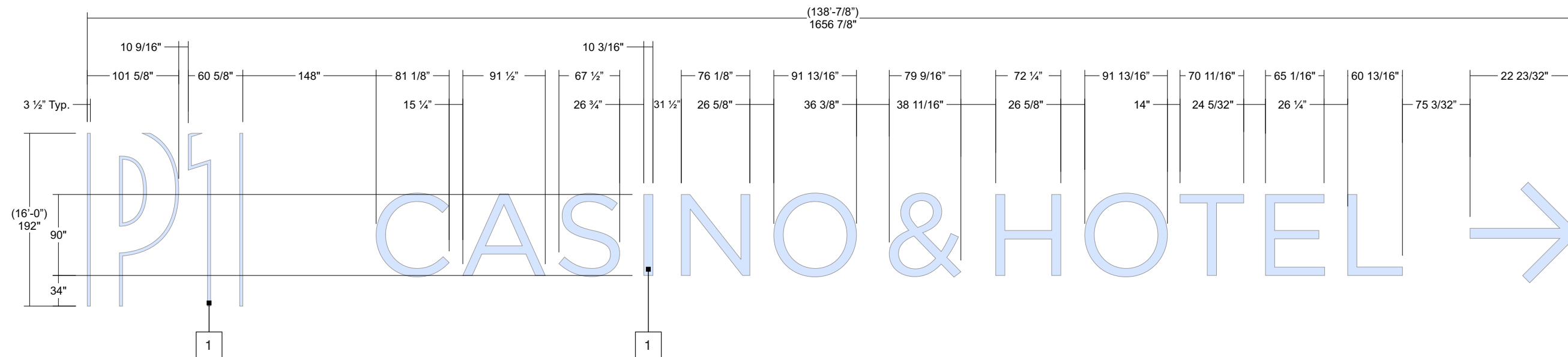
21 | Parking Connector Stencil

S/F | Non-Illuminated | Qty: 1

1 Stencil
Die-Cut Vinyl Stencil; Color: V12; Wall Painted by Others;



2 Front Elevation
Scale: 3/32" = 1'



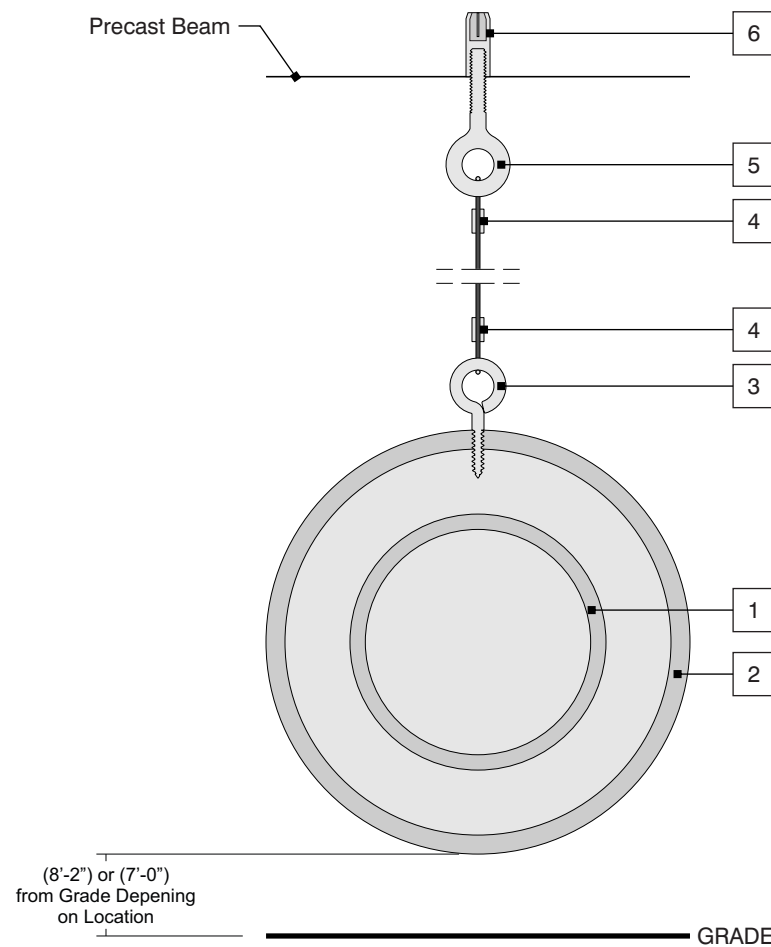
1 Front View
Scale: 3/32" = 1'

THIS PAGE LEFT INTENTIONALLY BLANK



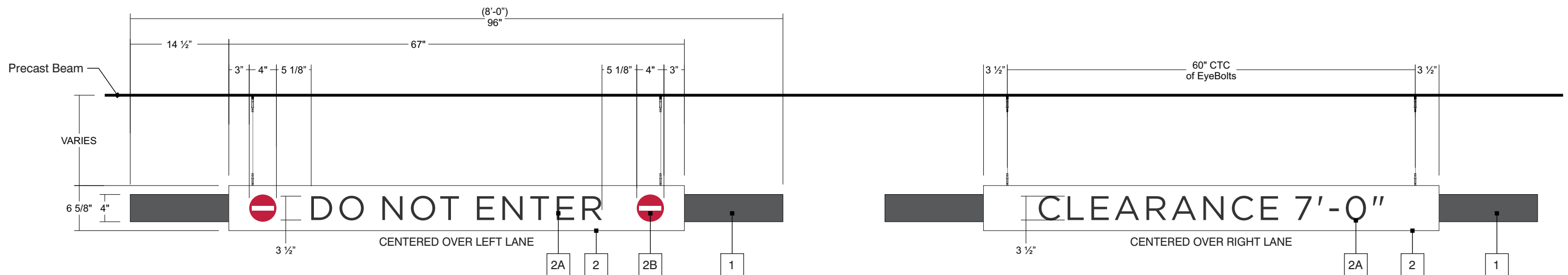
22 | Clearance Bar (Sets)

S/F | Non-Illuminated | Qty: 14



3 Typical Section View
Scale: 1:3

- 1 Center Tube**
3 1/2" SCH40 PVC Pipe w/ PVC End Caps; Color: P3;
- 2 Accent Tube**
6" SCH40 PVC Pipe w/ PVC End Caps - Glued to Center Tube; Color: P1;
- 2A Copy**
First Surface Applied Vinyl Copy; Typeface: T1; Color: V7;
- 2B Do Not Enter Symbol**
First Surface Applied Vinyl Symbol; Color: V8;
- 3 Bar Eyebolt**
3/16" X 1/2" Loop X 1" Shank S.S. Eyebolt - Mc#30425T41; Qty: 4; Pre-Drill PVC Tube w/ 3/32" Drill-Bit;
- 4 Wire Rope**
1/16" - 7X7 - S.S. Wire Rope w/ Rope Compression Sleeves - Mc#3633T2;
- 5 Precast Beam Eyebolt**
1/4"-20 X 1" Threaded S.S. Eyebolt - Mc#3032T51; Qty: 4; Secured in Concrete Anchors
- 6 Concrete Anchor**
1/4"-20 S.S. Female Threaded Anchor - Mc#97082A160; Qty: 4;



1 Front View @ Location 1015
Scale: 1:15

CLEARANCE 7'-0"

CENTERED OVER LANE

- 3** Front View @ Locations 2085, 2086, 2087, 2088 , 3059, 3060, 3061, 3062, 3063, & 3064
 Mounted 7'-0" from Grade
 Scale: 1:15

 DO NOT ENTER 

CENTERED OVER LEFT LANE

- 2** Front View @ Locations 1008, 1011, & 1029
 Mounted 8'-2" from Grade
 Scale: 1:15

CLEARANCE 8'-2"

CENTERED OVER RIGHT LANE

 DO NOT ENTER 

CENTERED OVER LEFT LANE

- 1** Front View @ Location 1015
 Mounted 7'-0" from Grade
 Scale: 1:15

CLEARANCE 7'-0"

CENTERED OVER RIGHT LANE

THIS PAGE LEFT INTENTIONALLY BLANK

