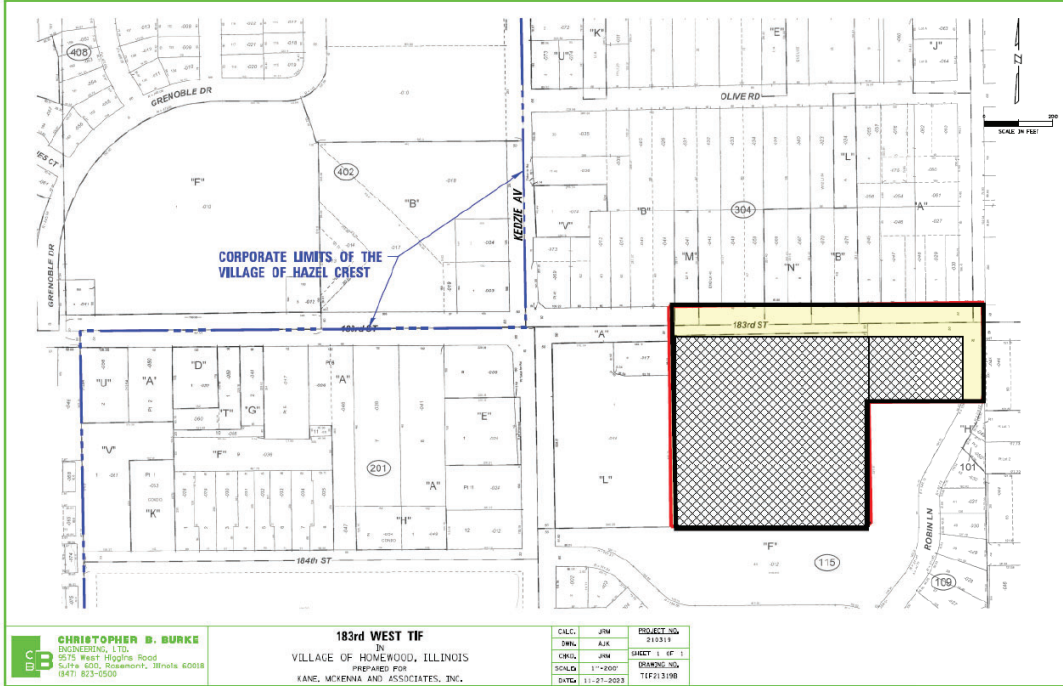

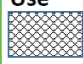


Proposed Future Land Use Map

Village of Homewood

183rd West RPA



-  Proposed Boundary
-  Parcels
- Proposed Land Use**
-  Commercial

CHRISTOPHER B. BURKE
 ENGINEERING, LTD.
 2215 West Poplar Road
 Suite 600, Rosemont, Illinois 60018
 847 823-5000

183rd WEST TIF
 IN
 VILLAGE OF HOMEWOOD, ILLINOIS
 PREPARED FOR
 KANE, MCKENNA AND ASSOCIATES, INC.

DATE	11-21-2023	PROJECT NO.	230313
SCALE	1"=200'	DRAWING NO.	TIF213198
DESIGNED BY	JPM	CHECKED BY	AJK
DRAWN BY	JPM	DATE	11-21-2023

S:\VILLAGES\183RD WEST TIF\183RD WEST TIF.DWG