

Qualifications & Proposal

VILLAGE OF HOMEWOOD

Request for Proposal

for Design and Construction Improvements to the
Village of Homewood Auditorium

Village of Homewood

Att: Terance Acquah

2020 Chestnut Road

Homewood, Illinois, 60430

tacquah@homewoodil.org



LINDENGROUP
ARCHITECTS



COSGROVE
CONSTRUCTION INC

Linden Group Architects

Contact: Michael Matthys

10100 Orland Parkway suite 110

Orland Park, Illinois, 60467

708-799-4400

mmatthys@lindengroupinc.com





TABLE OF CONTENTS

1. Cover Letter.....	4
2. Knowledge and Experience.....	6
3. Key Personnel.....	10
Resumes.....	12
4. Project Approach.....	16
5. Cost Proposal.....	18
6. Timeline.....	20
7. References.....	22
8. Additional Project Team Information	
Linden Group Architects.....	26
Cosgrove Construction Inc.....	30
Threshold Acoustics.....	34
Millies Engineering Group.....	38

1. COVER LETTER

4/10/2025
Village of Homewood
Terence Acquah
2020 Chestnut Road
Homewood, IL 60430
tacquah@homewoodil.gov

RE: Response to RFP – Homewood Auditorium Design Services

To Mr Aquah:

Linden Group Architects is pleased to submit this proposal in response to the Village of Homewood's Request for Proposals for design services associated with improvements to the Homewood Auditorium. We are located at 10100 Orland Parkway, Orland Park, IL 60467. I, Michael Matthys, Principal at Linden Group Architects, will serve as the primary point of contact and can be reached at (708) 799-4400 or mmatthys@lindengroupinc.com.

Our team brings extensive experience in the thoughtful renovation of public spaces, and we are confident in our ability to deliver a solution that balances functionality, compliance, and design excellence. With a clear understanding of the awarded grant budget of \$1.3 million, we will focus our efforts during the design phase on assessing the existing auditorium and developing plans that are cost-conscious while addressing the Village's goals for improved user experience, accessibility, and performance.

Linden Group is proud to be teaming with **Cosgrove Construction** to support a future design-build delivery model, ensuring an efficient and collaborative path from design through execution. We are also partnering with **Threshold Acoustics**, whose deep expertise will ensure that the auditory performance of the renovated space meets the highest standards—an essential consideration for a multi-purpose performance venue.

We appreciate the opportunity to be considered for this important community project and look forward to the chance to contribute to the future of the Homewood Auditorium.

Sincerely,

Michael Matthys
Principal
Linden Group Architects
10100 Orland Parkway
Orland Park, IL 60467

2. KNOWLEDGE AND EXPERIENCE

Calvary Church - Linden Group Architects



Homewood Brewing Company
Linden Group Architects



Omaha Conservatory of Music
Threshold Acoustics

- **Multidisciplinary Team:** *Linden Group Architects*, in collaboration with *Cosgrove Construction* and *Threshold Acoustics*, brings a multidisciplinary team with extensive experience in designing and delivering high-quality institutional, community, and performance-based projects.
- **Comprehensive Project Delivery:** Our team’s experience spans the full project lifecycle—from early conceptual design through detailed engineering and final construction—allowing us to provide cohesive, coordinated service delivery.
- **Local Knowledge & Collaboration:** We bring local knowledge and long-standing relationships with municipalities, which strengthens our ability to collaborate effectively with Village staff and elected officials.
- **Proven Homewood Experience:** *Linden Group Architects* has a proven track record of successful projects in Homewood, including:
 - *Homewood Brewing Company*
 - *La Banque Hotel*
 - *The Maple Tree Inn*
 - *Lassen’s Tap*
- **Design-Build Expertise:** Our design-build partner, *Cosgrove Construction*, brings extensive experience in designing and delivering high-quality institutional, community, and performance-based projects. Homewood-Flossmoor High School Project experience highlight:
 - Renovation and expansion of the *Homewood-Flossmoor High School District 233 Fine Arts and Performing Arts Center* in 2020.
- **Acoustics and AV Specialization:** *Threshold Acoustics* brings a wealth of expertise in optimizing environments for spoken word and musical performance. They also have existing knowledge of the Homewood Auditorium facility from their prior involvement during the *2018 feasibility study for the Homewood Performing Arts Center*.
- **Facility Systems Expertise:** *Millies Engineering Group* joins our team to conduct a comprehensive assessment of the existing building systems. Their work will include evaluation of HVAC infrastructure, power supply, and lighting needs to ensure system upgrades are well-integrated with design priorities and performance goals.

Together, our team brings deep technical expertise, a commitment to collaborative public work, and an understanding of the unique potential this project holds for the Village of Homewood.



Homewood Flossmoor Highschool Fine Arts Addition - **Cosgrove Construction**



Kirkwood Performing Arts Center
Threshold Acoustics



Illiana Christian High School Millies
Engineering Group



Wheaton College Conservatory of Music
Threshold Acoustics

3. KEY PERSONNEL

PROJECT TEAM

Design

Michael Matthys, *Partner in Charge*
Linden Group Architects
10100 Orland Parkway, Orland Park, IL
mmatthys@lindengroupinc.com
708-642-2255

Construction

Tim Cosgrove, *Partner in Charge*
Cosgrove Construction Inc.
20654 Amherst Ct, Joliet, IL 60433
tcosgrove@cosgroveconstructioninc.com
815-774-0036

Accoustics/AV

Brandon Cudequest, *Senior Consultant*
Threshold Acoustics, LLC
141 West Jackson Blvd, Suite 2080
Chicago, IL 60604
djanney@milliesengineeringgroup.com
312-386-1414

Interior Design

Hope Fuchs, *Interior Designer*
Linden Group Architects
10100 Orland Parkway, Orland Park, IL
hfuchs@lindengroupinc.com
708-799-4400

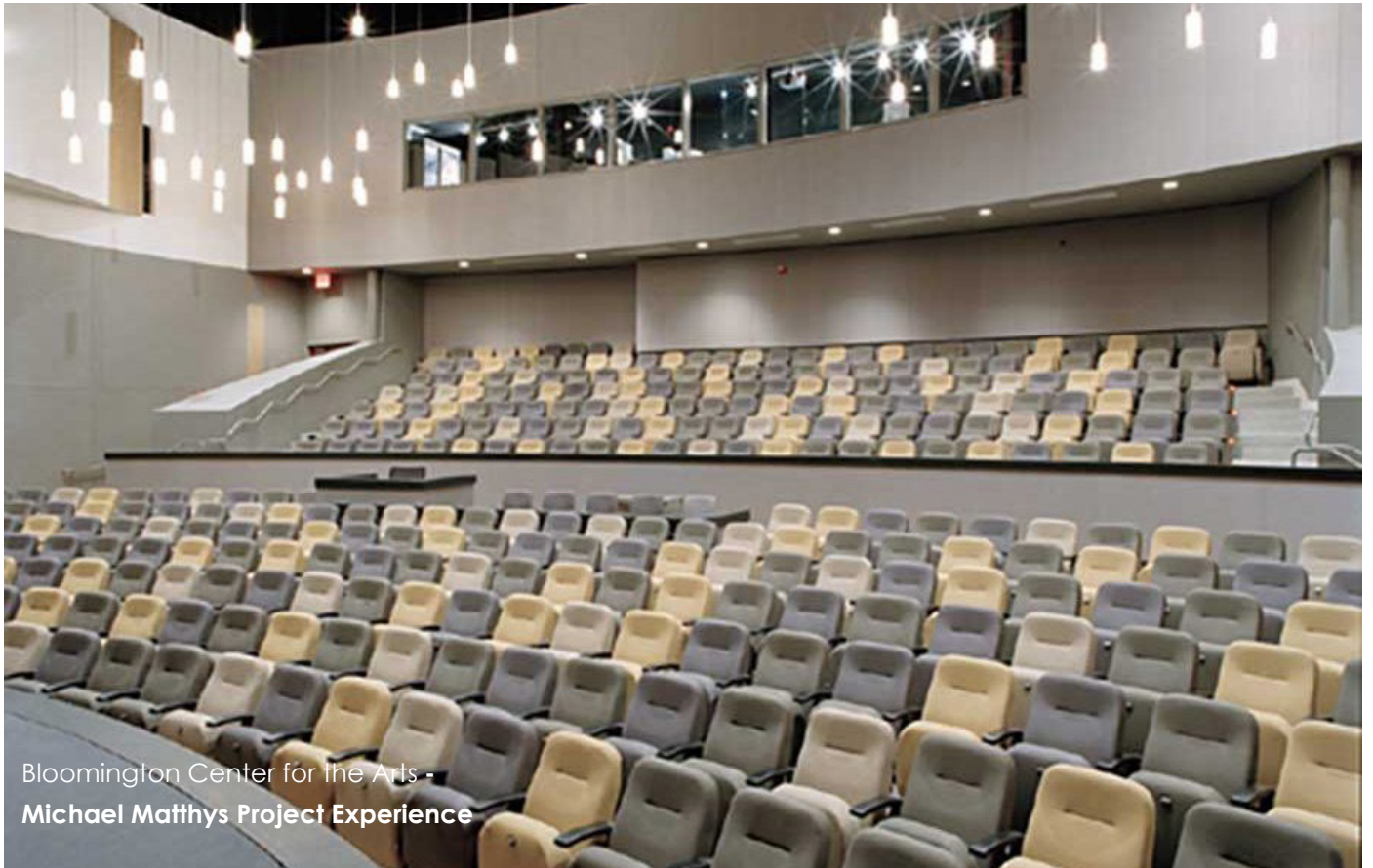
Mechanical / Plumbing /

Electrical Engineering

David Janney, *Principal*
Millies Engineering Group
9711 Valparaiso Drive
Munster, IN 46321
djanney@milliesengineeringgroup.com
219-924-8400

Structural Engineering

Seth Michael, *Principal*
McCluskey Engineering Corp
smichael@mccluskeyeng.com
1887 High Grove Lane
Naperville, IL 60540
630-717-5335



Bloomington Center for the Arts -
Michael Matthys Project Experience



Homewood Flossmoor Highschool Fine
Arts Addition - **Cosgrove Construction**



Michael Matthys

Project Role: Partner in Charge



About Michael

Michael has been in the practice of architecture for the past 25 years, serving and assisting a wide variety of clients with their planning and building objectives. Michael's experience with the LEED certification process has given him an understanding of cost-effective green building strategies that can be implemented into your project. He offers design expertise to all phases of the architectural process from early programming through construction. Having worked on a wide variety of public projects, his collaborative leadership skills are well versed. Michael enjoys working within his home community of Homewood-Flossmoor and has shared his architectural insight as a committee member both in Homewood and Flossmoor and donated his time towards community projects like the Homewood Science Center and the Flossmoor Veterans Wall of Honor.

Education

Iowa State University, Bachelor of Architecture, 1997
Homewood Flossmoor High School class of 1992!

Recognition

Architectural Registration attained in 12 states
Design Excellence awards of the American Institute of Architects

Experience

Vice President, Linden Group Architects, a multidisciplinary professional organization based in the south suburbs of Chicago serving a diverse set of clients including but not limited to Municipal, Recreation, Corporate, Hospitality, Veterinary Care, Medical, Multi family housing, single family residential, Manufacturing, Retail, and Mixed Use projects.

Related Project Experience

Work in Homewood: The Cottage on Dixie; Lassens Tap Renovation and expansion projects; Lavoute Bistro; La Banque Hotel; Homewood Brewing Company (Current).

Municipal Project Experience: Bloomington Minnesota City Hall, Police Station, and Performing Arts Center; Village of Lansing Village Hall; Centennial Park, Munster Indiana; Community Park, Munster Indiana, Coal City Administrative and Police Space Needs Assessment; Village of Flossmoor, administrative, Police, and Fire Space Needs Assessment.

Current Notable Work in the Area: Homewood Brewing Company, Dixie Highway; Flossmoor Veterans Wall of Honor, Flossmoor Park; South Suburban Humane Society (new shelter in Matteson).

- Village of Homewood Appearance Commissioner from 2005-2012
- Village of Flossmoor Plan Commissioner 2013 to present

Professional Affiliations

Nation Council of Architectural Registration Boards Certificate
American Institute of Architects

Tim Cosgrove

Project Role: Partner in Charge



Summary

Tim joined Cosgrove Construction in 1998. Where he ran work as a foreman. Quickly moving through the ranks Tim began estimating and project management. In 2010 Tim became an officer in the company.

Education & Certification

- Joliet Jr College; two years construction technology, surveying, blue prints, drafting and basics
- One year internship and one year working with GME Consultants; construction engineering and testing.
- Four year apprenticeship with carpenters training program in Chicago.

Safety & Training Record

OSHA 30
Cosgrove quarterly safety training

Experience

- Partner of Cosgrove Construction, whose average number of union employees is 80-100. Twenty years in office support and management.
- Project management and office manager for 20 years.
- Estimating general construction and sub-contract work for ten years.
- Carpenter foreman for fifteen plus years.
- Supervises and monitors performance of team members
- Coordinates and attends meetings with owner representatives, client team members, contractors, engineers and others to discuss project related matters and progress
- Able to read and interpret complex drawings, technical documents, blueprints, construction drawings, contracts, and legal documents.
- Member of Three Rivers Construction Alliance
- Expertise in installation and management of all phases of construction for industrial, commercial projects spanning across manufacturing, packaging, food processing, strip malls, retail stores, restaurants, and Municipal buildings

Brandon Cudequest Senior Consultant



Education

Loyola Marymount University, Bachelor of Arts in
Recording Arts

Rensselaer Polytechnic Institute, Master of Science
in Architectural Sciences

Licenses and Affiliations

Acoustical Society of America,
ASA Standards S12 Committee Working Group 18
Los Angeles ASA Chapter, Secretary

Audio Engineering Society
JAES Associate Editor, Book Reviews
Chicago Chapter, Treasurer

American Society of Heating, Refrigerating, and Air-
Conditioning Engineers
Vice Chair, Technical Committee 2.6

Institute of Noise Control Engineers

Brandon's early love for acoustics came out of a household appreciation for theatre and film scores. Playing in dive bars with his high school garage band, Brandon began to appreciate the importance of good acoustics and audio, leading him to study Recording Arts at Loyola Marymount University. Brandon started his consulting career in Los Angeles, before trading in his car for a winter jacket and joining Threshold. He still holds out hope that public transportation in Los Angeles is possible. He's on a constant quest to understand all rumbley things - from bass guitars and bass clarinets to nowadays the low whirrs of mechanical systems and thumps of subwoofers.



Wheaton College Conservatory of Music, Wheaton, Illinois

Village of Homewood Auditorium, Homewood, Illinois

Acoustic feasibility study of existing auditorium to determine best uses and needs for future facilities.

Atlanta Music Project, Center for Performance & Education, Atlanta, Georgia

Adaptive reuse of a grocery store to create a 200-seat performance space, music rehearsal spaces, and individual practice rooms.

Streater High School Auditorium, Streator, Illinois

Acoustics and AV renovation of a 650-seat, WPA-era auditorium.

Wheaton College Conservatory of Music, Wheaton, Illinois

Renovation of the existing Armerding science building and new addition to create a new conservatory featuring a dedicated recital hall, teaching studios, practice spaces and ensemble rooms in the renovated structure and new 650-seat concert hall.

Owosso Middle and High School, Performing Arts Wing Addition, Owosso, Michigan

A performing arts wing addition including a 1000-seat theatre, rehearsal rooms for vocal, band and marching band, and practice rooms.

Steelhouse Omaha, Omaha, Nebraska

Addition of a live music venue for up to 2,600 standing patrons and an educational building with 200-seat performance/rehearsal room, rehearsal rooms, practice rooms, classrooms, a digital audio lab, a 500-seat event space and office space.



MILLIES
ENGINEERING GROUP

DAVE JANNEY

PROJECT PRINCIPAL | LICENSED P.E.

David has over 35 years of expertise in lighting design, audio/visual/data technology and communication systems, emergency and normal power distribution systems as well as fire alarm, security, and other low voltage systems. He has extensive experience with all types of projects including schools (elementary, middle and high schools), higher education facilities, municipal facilities, religious facilities, medical facilities, hospitals, light industrial facilities and recreational facilities. Additionally, Dave is a licensed professional engineer in 24 states and DC.



PROJECT EXPERIENCE

ST. JOHN THE EVANGELIST PARISH - *St. John, Indiana*

- New Ground Up Construction

BOYS & GIRLS CLUB - *Valparaiso & Chesterton, Indiana*

- New Valparaiso Facility
- Chesterton Facility Renovation For Duneland

MARIST CATHOLIC COLLEGE PREP - *Chicago, Illinois*

- Science Wing Renovation

ST. MONICA CATHOLIC CHURCH & SCHOOL - *Mishawaka, Indiana*

- Assessment & Feasibility Analysis

EDUCATION

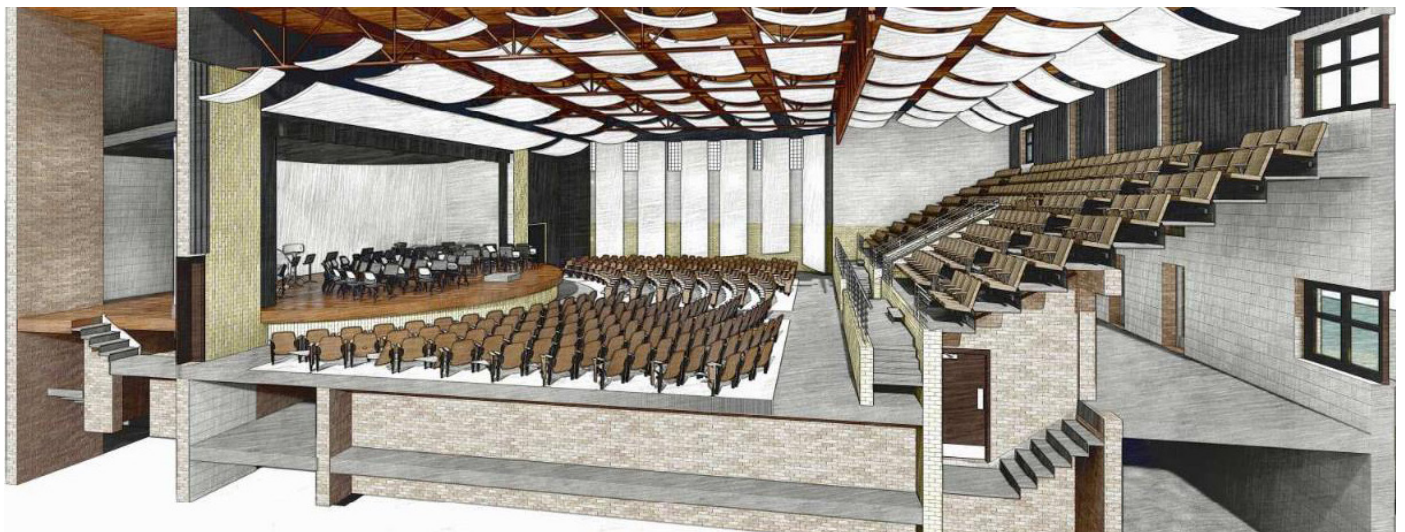
BACHELOR OF ELECTRICAL ENGINEERING

*Purdue University
Class of 1994*

LICENSEURE

ALABAMA	NEBRASKA
ARIZONA	NEVADA
ARKANSAS	NEW HAMPSHIRE
CALIFORNIA	NEW MEXICO
DELAWARE	NEW YORK
FLORIDA	OKLAHOMA
ILLINOIS	OREGON
INDIANA	TENNESSEE
KANSAS	WASHINGTON
MARYLAND	WASHINGTON D.C.
MASSACHUSETTS	
MICHIGAN	

4. PROJECT APPROACH



Design Phase

Initial Assessment and Stakeholder Engagement

We will begin by conducting a comprehensive assessment of the existing auditorium facilities. This includes reviewing current conditions, identifying structural or mechanical constraints, and meeting with key stakeholders to understand project goals and priorities.

Concept Development and Schematic Design

Based on the assessment, we will develop conceptual designs that address seating improvements, acoustic enhancements, lighting and AV upgrades, flooring updates, and ADA compliance. We will present these initial concepts to the Village of Homewood for feedback and refinement.

Design Development

After refining the concept, we will progress to detailed design development. This phase includes producing architectural drawings and specifications for construction, incorporating input from acoustic and AV engineers to ensure optimal performance.

Cost Estimation and Budget Alignment

We will prepare detailed cost estimates to ensure that the proposed design stays within the \$1.3 million budget. Adjustments will be made as necessary to align with financial constraints while maintaining project goals.

Permitting and Approvals

We will coordinate with local authorities to obtain necessary permits, ensuring that all plans comply with building codes and regulations.

Construction Phase

Design-Build Collaboration

Partnering with Cosgrove Construction, we will implement a design-build approach that ensures seamless coordination from design through construction. This integrated approach will minimize delays, manage costs, and maintain design integrity.

Construction Management

During construction, our team will provide continuous oversight to ensure that work progresses according to plan, adheres to quality standards, and stays on budget. Regular progress meetings with stakeholders will keep everyone informed and aligned.

5. COST PROPOSAL

Design Phase Cost Proposal

Service	Percentage	Estimated Cost
Architectural & Engineering Design Fee – <i>Linden Group Architects</i>	7%	\$80,500
Acoustical Engineer Fee – <i>Threshold Acoustics</i>		\$11,000
AV Design – <i>Threshold Acoustics</i>		\$7,500
Pre-Construction Cost Estimating – <i>Cosgrove Construction</i>	1%	\$11,500
Interior Design – <i>Linden Group Architects</i>	1%	\$11,500
Total Estimated Design Phase Fee		\$122,000

Construction Phase Fee

Service	Percentage	Estimated Cost
Construction Phase Fee – <i>Cosgrove Construction</i>	6.5–8%	\$74,750 – \$92,000

6. TIMELINE

PHASE 1: Design Phase (2–3 Months)

Month 1: Existing Conditions Assessment + Schematic Design

- Conduct a thorough assessment of the existing auditorium facility
 - Seating layout and structural condition
 - Acoustics performance and deficiencies
 - AV system evaluation
 - Flooring condition and hazardous material review
 - ADA accessibility and compliance gaps
- Engage Village stakeholders for visioning and project priorities
- Prepare initial schematic layout and scope narrative
- Identify permitting pathway and regulatory constraints

Month 2: Design Development

- Refine auditorium design:
 - Updated seating layout and sightlines
 - Acoustical treatments and shell design
 - AV infrastructure and control zones
 - Flooring materials and finish selections
 - ADA-compliant path of travel, restrooms, and seating
- Begin coordination with engineering (MEP/structural if needed)
- Develop draft cost estimate and outline construction timeline

Month 3: Construction Documents & Permitting

- Finalize detailed drawings and specifications
- Submit for permit review in accordance with Village requirements
- Respond to any code comments or revisions
- Provide final cost estimate and construction schedule

PHASE 2: Construction (6–9 Months)

Month 4–5: Mobilization + Selective Demolition

- Mobilize construction team and review schedule with Village
- Manage selective demolition of finishes, seating, flooring, etc.
- Prepare for AV, acoustical, and ADA upgrades
- Begin document and drawing review with subcontractors

Month 5–6: Core Auditorium Work Begins

- Prepare risers or platforms for new seating configuration
- Begin acoustic treatment installations and sound shell assembly
- AV cabling infrastructure rough-in
- Replace/repair flooring system and substructure if needed
- Limited HVAC modifications, as scoped

Month 6–8: Interior Finishes and Systems

- Install new finishes: flooring, ceiling, lighting, painting
- AV equipment installation and configuration
- Final seating installation
- ADA improvements to restrooms, doors, ramps, and egress signage

Month 8–9: Punch List + Testing + Occupancy

- Final inspections with building officials and Village representatives
- System testing for AV, lighting, sound
- Address punch list items and closeout documentation
- Certificate of Occupancy and project turnover

7. REFERENCES

WORD ON THE STREET

“In a people oriented profession, I have found the Linden Group especially strong in their communications with clients and in working with the many contractors and subcontractors on their projects. Their approach in handling any situation and the confidence that is exuded in making decisions and / or recommendations has been instrumental.”

—Robert O’Shaughnessy
Director of Parks and Recreation
Munster, Indiana

“Linden Group proved to be a reliable, cooperative, and innovative firm ... Meetings were held with all involved and their ideas and suggestions were listened to and acted upon. The entire staff at Linden Group was accessible for questions, and they were quick to provide answers to those questions.”

— Trustee Tony DeLaurentis
Village of Lansing, IL

“The Village of Frankfort recently engaged Linden Group Architects to design an addition to village hall that will include a new board room and customer service area. We chose Linden Group because of their quality work in Frankfort and notable design reputation in the region. Linden designed several of Frankfort’s most distinguished buildings and therefore became an obvious choice to design our project.”

— May Jim Holland
Village of Frankfort

“The Linden Group accomplished the three main goals of the Township: On Time; On Budget; and Customer Satisfaction. I am pleased to recommend them without reservation.”

— Carl Brooks
Chairman, Architect Selection Committee
Township of Hampshire

Linden Group Architects References

Claude Gendreau

847-207-7220

jk@vetorthoctr.com

La Banque Hotel, Ravisloe CC, The Cardinal Hotel

Carmela Wallace

708-802-3069

carmela@homewoodbrew.com

Homewood Brewing Company

Village of Frankfort

Keith Oglr, Mayor of Frankfort

815-341-3624

kogle@frankfortil.org

Jim Holland, former Mayor of Frankfort

815-644-4420

jimholland123@gmail.com

Village of Monee

Dr. Therese M. Bogs, Mayor of Monee

708-534-8301

tbogs@villageofmonee.org

Cosgrove Construction References

Matt Ulfax/Newco Design Build

616-493-9360

Matt@Newcodb.com

Multiple Meijer projects

Tom Wehmeier/Community Honda

708-364-2450

twehmeier@communityhonda.com

Community Honda – Orland Park, IL

Bryan Reiser/Professional Building Services

815-672-4010

Bryan@pbsdesignbuild.com

Multiple Church projects

Threshold Acoustics References

Hudson Valley Shakespeare Festival

Davis McCallum

Artistic Director,

(845) 809-5750 ext.103

dmccallum@hvshakespeare.org

Wachholz College Center

Matt Laughlin

Director

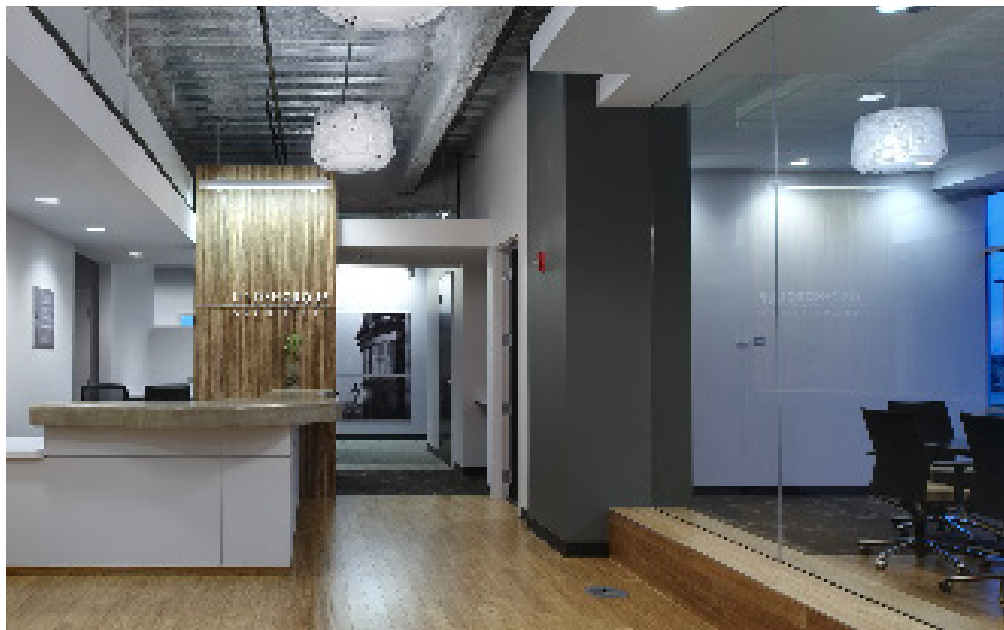
406.756.3619

mLaughlin@fvcc.edu

8. ADDITIONAL PROJECT TEAM INFORMATION

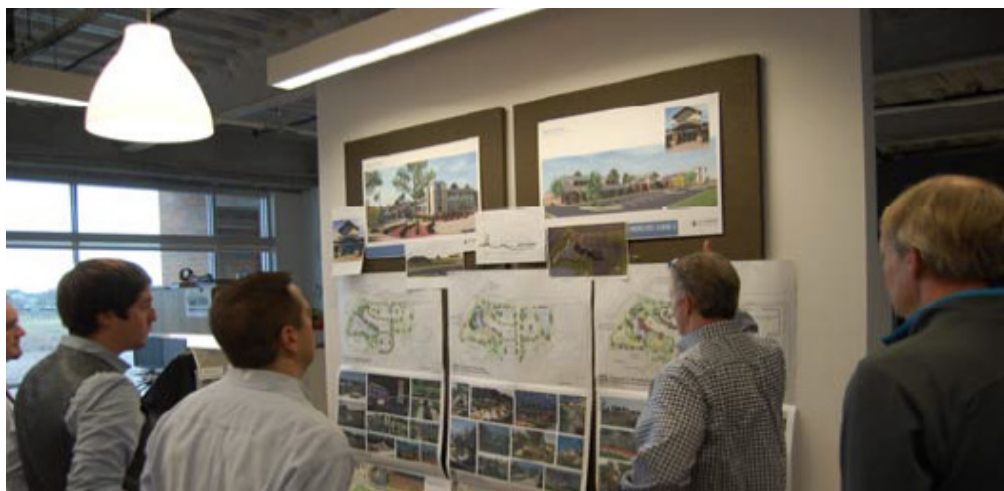
OUR CULTURE

We are proud of the reputation we've achieved since 1978 ... one which illustrates a responsible, flexible, and imaginative attitude in our endeavors while considering the clients needs with cost effective results. A comprehensive approach has kept Linden Group growing and diversifying in pace with our clients' needs. Today, with strong talent and continued vitality, we maintain the qualities on which the firm was founded and bring a wide range of strengths, experience, and perspectives to your project.



10100 Orland Parkway, Suite 110
Orland Park, IL 60467
708-799-4400

lindengroupinc.com



LINDENGROUP



PROFILE

LINDENGROUP INC. (LGI) is a multi talented organization providing full service architecture, interior design, land-scape design and land planning.

- State or Registration: Illinois
- 43 years in business
- 16 employees; 6 architects, 3 graduate architects, 1 graduate engineer, 2 interior designer, 2 technical, 1 administration, 1 construction specialist.
- 1 LEED accredited professional
- Licensed to practice architecture in 17 States; Illinois, Minnesota, Indiana, Ohio, Michigan, Tennessee, Georgia, Kansas, North Carolina, Colorado, Wisconsin, Texas, Oklahoma, Nebraska, Maryland, New Hampshire

We provide the following in-house services to our valued Clients:

- Feasibility Studies
- Space Needs Analysis
- Land Planning
- Site Development
- Full Service Architecture
- Project Theme Development
- Construction Documents
- Interior Design
- Zoning/Re-Zoning
- Annexation
- Preliminary Cost Projections
- Building Evaluation Services
- Space Planning
- Bidding Assistance and Analysis
- Contract Administration
- Shop Drawing Reviews

REVENUE — Last 24 months Billings: \$7,500,000



ADMINISTRATION BUILDING EXPANSION

Village of Frankfort / Frankfort, Illinois

AIA Distinguished Building Award

American Institute of Architects—Eastern Illinois Chapter

Linden Group worked with Village of Frankfort staff members, board of directors, and trustees to design an addition to the existing Village Hall facility. The new design features a 3,300 sf board room, and includes a new conference room, cable broadcast room, additional offices, toilet rooms, pre-function meeting room, public lobby, reception desk, and basement storage. This project also included exterior improvements such as a public gathering plaza, trellised courtyard, storm water management, landscaping walking paths, and additional parking.

\$4 MILLION construction cost

13,000 SF new building gross area (including basement)

8,500 SF existing remodeling gross area (including second story)



CALVARY CHURCH

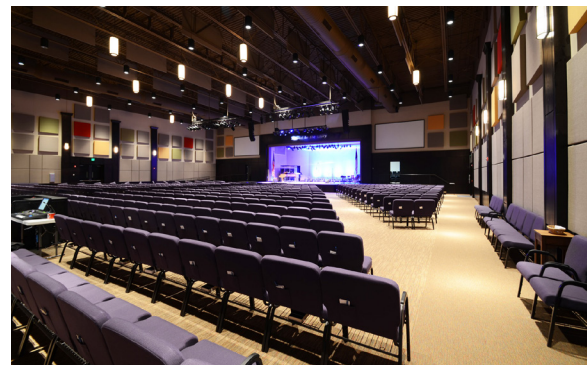
HALL, AMPHITHEATER & AMENITIES / Munster, Indiana

Project Overview:

Calvary Church in Orland Park, Illinois, is a new ground-up construction project designed to serve a growing and dynamic congregation. Envisioned as a modern, mission-driven campus, the facility provides a flexible and welcoming environment for worship, fellowship, education, and outreach. Linden Group Architects partnered closely with the church leadership to design a building that reflects Calvary's commitment to faith, community, and future generations.

Design Intent:

The architectural vision for Calvary Church emphasizes openness, light, and community connection. The sanctuary anchors the site, with a soaring roofline and generous glazing that draws in natural light and creates a sense of sacred space. The building layout supports intuitive wayfinding and a seamless flow between worship, education, and fellowship areas. Materials and forms strike a balance between warmth and simplicity, inspired by both traditional ecclesiastical design and contemporary functionality.





HOMEWOOD BREWING COMPANY / Homewood, Illinois

Project Overview:

Homewood Brewing Company is a dynamic new gathering space located in the heart of Homewood, Illinois. Designed as a cornerstone for community and craft, the project transforms a redevelopment site into a vibrant brewery that combines small-batch beer production, a full-service restaurant, while integrating with the fabric of the surrounding neighborhood.

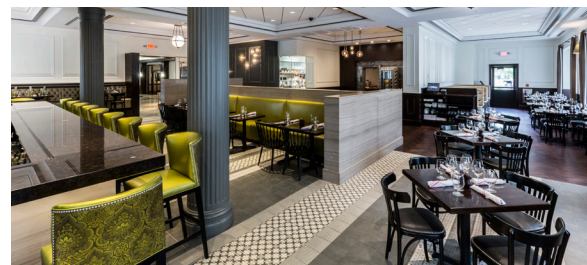
Design Intent:

The design is rooted in Homewood's spirit—creative, welcoming, and rooted in craftsmanship. The architectural expression blends industrial elements with warm, contemporary finishes, honoring the heritage of the site while embracing modern sensibilities. A signature feature is the exposed brewing system, which becomes a visual centerpiece and educational experience for guests. A large glass wall along the street invites the public in and celebrates the brewing process.



LA BANQUE & LA VOUTE / Homewood, Illinois

The historical Homewood State Bank was transformed into a modern boutique hotel and restaurant, while maintaining the property's historical integrity. Great care was taken to preserve and reuse original features, such as the vault door and safety deposit boxes. The transition between hotel and restaurant occurs at the vault original gate, which was re-purposed as a screen wall dividing the hotel and restaurant. A main feature of the restaurant is the bank vault and its massive pneumatic door. The vault room houses a breakfast buffet in the morning and a private chef's table during dinner service. As guests move through the space, they encounter more subtle hints of the property's history, as safety deposit boxes decorate the back bar and host desk. The historic elements blend seamlessly with modern design touches. Examples are evident in the patterned floor tile, minimalist light fixtures, unique dining chairs, and deluxe finishes that are used throughout the space. These touches elevate the French Bistro concept to one that is more befitting of the grandeur of this historic building.



Cosgrove Construction Inc. is a family owned business that was founded by Virginia and John Cosgrove in 1991. The company has grown to over 70 employees over the last 29 years. The company is currently managed by Virginia and John's sons Tim, John, Marty and Tom. As a General Contractor and Construction Manager we provide a complete range of construction services. In addition to traditional General Contracting we provide Construction Management services and self-perform carpentry, painting and decorating. Our annual revenues average around \$30,000,000.00. Cosgrove Construction Inc. has experience with a wide variety of types of projects. We have built Coppers Hawk restaurants, Meijer stores, Fire Stations, Police Stations, Medical offices, Shopping Centers, Athletic Facilities, Elementary Schools, High Schools, Churches, Universities and Hospital renovations.

Cosgrove Construction Inc. provides services in many different ways. We act as general contractor in design/ bid/ build agreements and design/ build agreements. We also act as the general trades contractor (prime) in Construction Manager agreements. We provide repeat construction services to several Construction Managers and Owners. Our experienced staff includes six project managers, three estimators, six superintendents, thirty carpenters and thirty painters. We supplement our staff with experienced trade contractors for whom we have long standing relationships. Cosgrove Construction Inc. is signatory to the local unions.



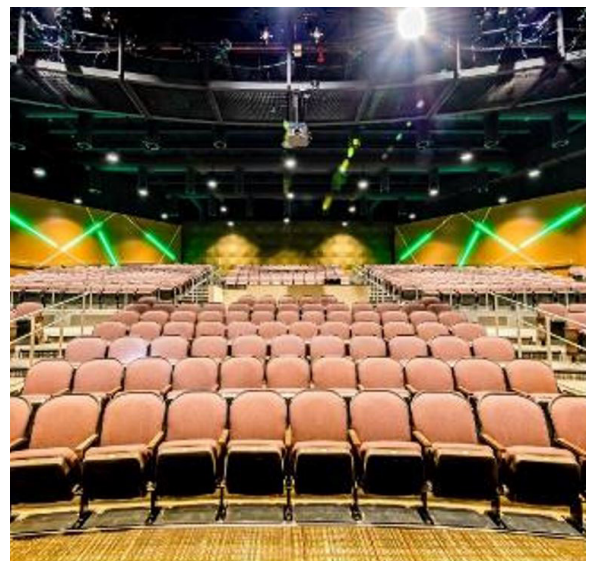
Homewood Flossmoor High School – Flossmoor, IL

The Homewood Flossmoor High School project for the Homewood Flossmoor High School District 233 is a \$14,000,000.00 renovation and addition to be completed in the October of 2020. The project includes additions on both sides of the existing auditorium that will house a black box theater and new music education classrooms. Two new lobbies connect the additions to the existing building. The existing music education spaces are being renovated to house new 3D Art and 2D Art studios. The project area is approximately 58,000 square feet. The architect is DLA Architects represented by Ed Wright at 847-742-4063. The facility manager for the high school is Tom Wagner at 708-335-5521.



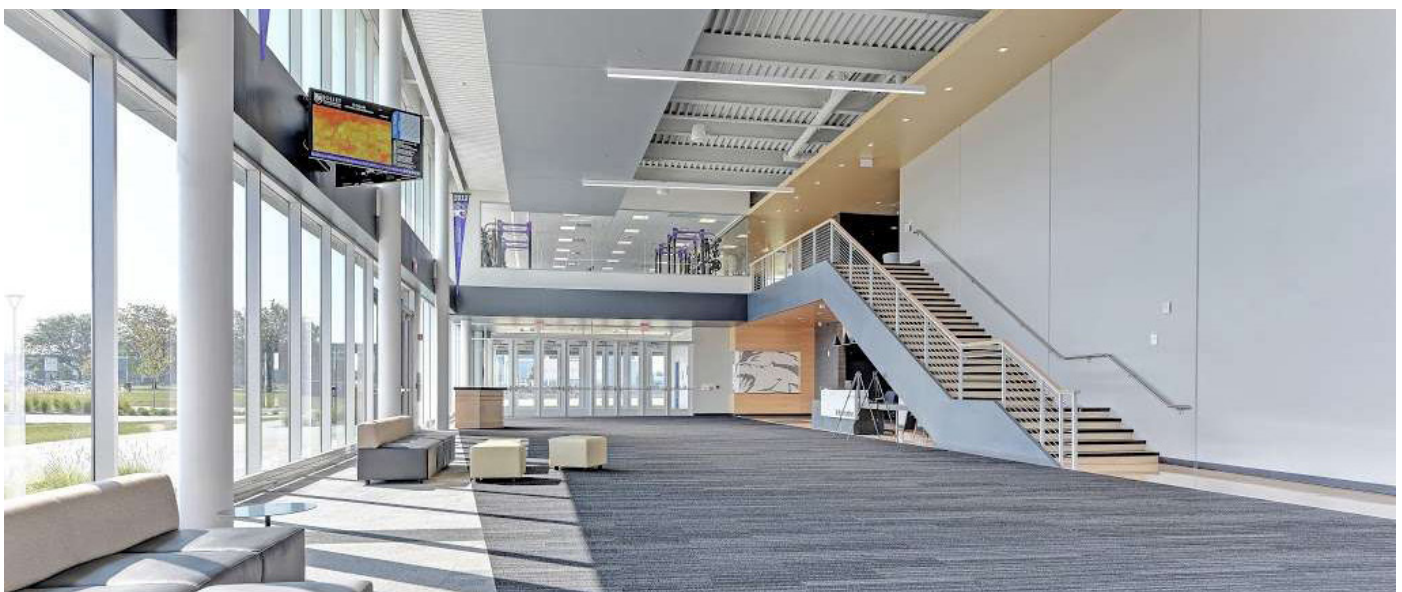
Kankakee High School – Kankakee, IL

The Kankakee High School project for the Kankakee School District 111 is a \$21,000,000.00 renovation and addition to be completed in the December of 2018. The project includes additions to the front of the building that house administration offices, the lobby, science labs and learning studios. An existing courtyard has been filled in and will house a new student success center and make room for the kitchen and cafeteria to expand. The project also includes renovating about 80% of the existing building. These areas include the music education area, auditorium, classrooms and offices. The project area is approximately 88,000 square feet. The architect is DLA Architects represented by Ed Wright at 847-742-4063. The construction manager was Grilli Construction represented by Dan Petrarca at 708-774-5544.



Joliet Junior College Multi-Purpose Facility – Joliet, IL

The Joliet Junior College Multi-Purpose Facility project is a \$16,000,000.00 new building scheduled to be completed in 2016. The building will house a gymnasium for basketball and soccer, locker rooms, weight room, offices and study rooms. The building is 80,000 square feet and is pursuing LEED Silver certification. We are the general trades contractor on the project and are self-performing carpentry and painting. The architect is Demonica Kemper Architects and our contact there is Peter Eliopoulos. DKA can be reached at 312-496-0000. The project manager for Joliet Junior College is Phil Thiele and he can be reached at 708-277-8950.





Atlanta Music Project, Atlanta, Georgia

Threshold's team of experts in the fields of acoustic and audio/video design create places of gathering to learn, share wisdom, and pass along culture.

Even as a profoundly visual species, when we gather to exchange information, the aural component of that transfer is undeniable. When the sound of every space receives our attention, we can be immersed in each other's presence and build authentic connections.

Our approach reinforces the visual realm of architecture with the subtlety, power, and delight that sound can bring to the built environment. We strive to understand what is unique about and important to the Client, identify the acoustic attributes of each space that derive from those unique aspects, and then pursue and defend those attributes with vigor and good humor through the entire duration of design and construction.

We share our knowledge with the design community: serving on boards, lecturing in academia, presenting our research, and contributing to guidelines for healing environments. Our work increases awareness of the aural realm's impact on our quality of life.

We work alongside administrators, architects, and artists to deliver thoughtful designs using our holistic understanding of architecture, engineering and physics. Our work can be heard at Omaha Conservatory of Music, Columbia College of Chicago 11th Street Theatre, Kirkwood Performing Arts Center, McNeely Music Center, and Groton Hill Music Center. Our ongoing performing arts, educational, worship, cultural, and experimental projects include Obama Presidential Center, Calgary Arts Commons, and Boca Raton Center for Arts and Innovation.



Location

St. Louis, Missouri

Owner

Kirkwood Performing Arts Center

Renovation Team

Acoustics - Threshold

Architects - Jacobs

Theatre Consultants - Schuler Shook

Size

38,000 square feet

525-seat proscenium theatre

Schedule

Completed 2020

The Kirkwood Performing Arts Center is a community asset and cultural hub, as well as the anchor for a new downtown Arts & Entertainment District.

The facility is comprised of a state-of-the-art, two-level, traditional proscenium theatre and performance support spaces; a 3,000-square-foot Black Box performance theatre; a 2,000-square-foot Events Space; and a two-story atrium lobby that will serve as the face of community events. The main theatre is designed as an intimate space with the inclusion of a balcony and stage extensions to ensure proximity to the stage for theatregoers.

The Black Box, which can vary in size to create a flexible stage and varied audience interaction opportunities, is an intimate performance space where more experimental performance and staging can be explored, with the most human and least technical elements in focus.

With its prime tenant the theater company Stages St. Louis, Kirkwood Performing Arts Center is an example of a beloved proscenium stage that is the first and foremost a home for artists.

**Location**

Omaha, Nebraska

Owner

Omaha Conservatory of Music

Team

Acoustics and A/V - Threshold

Architect - HDR

Size

40,000 square feet

Schedule

Completed 2016

Awards2018 - Excellence in Design, Merit Award,
Adaptive Reuse Category2017 - Excellence in Design, Merit Award,
Interior Architecture Category

Originally occupying space in several small, temporary locations, the Omaha Conservatory of Music continued to grow and found itself in need of a new, dedicated home — a larger facility with teaching studios, as well as a performance venue. Opportunity presented itself when a local temple, originally constructed in 1952, relocated to a new facility leaving its existing building available to be repurposed. The Conservatory provides private lessons in orchestral instruments and voice, as well as, conducting, music composition and theory.

The 40,000-square-foot facility offered a perfect spatial fit and venue. An adaptive reuse project, the existing classrooms were subdivided into teaching studios, the conference center converted into a café and lounge, the chapel into a recital hall, and the sanctuary and social hall converted into a performance venue with 200 fixed seats. Seating Company installed telescopic seats that retract, bleacher-style, into the back wall, to increase the seating capacity to 500. State-of-the-art systems, including sound isolating partitions, proper room acoustics and a new mechanical system were designed and installed. The shell of the existing facility was in good shape and needed little work with the exception of a new roof and windows (the windows were configured similar to the original) essentially preserving the original exterior architecture.

Flathead Valley Community College
Wachholz College Center



Location

Kalispell, Montana

Owner

Flathead Valley Community College

Team

Acoustics and AV - Threshold
Architect - Cushing Terrell
Theatre Consultant - Schuler Shook

Size

58,000 sf
1,014-seat Performing Arts Center

Schedule

Estimated completion 2025

The Wachholz College Center is a 67,000-square-foot facility that combines two distinct venues into one stunning building on the Flathead Valley Community College campus. The goal of the project was to meld two programs that are usually separate — performing arts and athletics — into one grand facility. The project theme: music in motion.

The project's design challenges — or rather opportunities for creativity and invention — involved delivering superior acoustic performance as well as acoustic separation of the different programs, while connecting the two in a natural, harmonious manner. Leveraging the idea of music in motion, the design team worked to ensure all elements of the facility responded to and aligned with this theme — everything from the very visible exterior elements that represent musical scales and piano keys to the smallest interior details, such as balcony railings and wood accents that mirror music vibrations and convey a sense of repetition and rhythm.

The two primary spaces (performance hall and gymnasium) are made of massive pre-stressed concrete panels. The concrete panels not only provide for high-quality acoustics, but also a solid structure with durable finishes. Additionally, the project boasts large ductwork to create low-volume air for better acoustics. To solve for the issue of sound separation between the programs, the design team utilized an acoustic isolation joint with isolation pads that support the balcony-level bridges between the two venues. These engineering features act to split the building in half and separate the spaces acoustically.



COMPANY SNAPSHOT

HOME OFFICE

9711 Valparaiso Drive, Suite A, Munster, IN 46321

BRANCH OFFICE

221 North LaSalle Street, Suite 3100, Chicago, IL 60601

99 Monroe Ave Northwest Suite 200, Grand Rapids, MI 49503

BACKGROUND

Millies Engineering Group (MEG) is a multi-disciplined consulting engineering firm which pursues excellence in every task in order to satisfy its clients' needs and provide maximum opportunity for career satisfaction, motivation, and advancement of its staff. The firm provides innovative and creative evaluations and design of various environmental systems for commercial, institutional, and industrial facilities to end users directly and indirectly through architects and other design professionals. The firm adheres to the philosophy of providing professional services to its clients by incorporating the client as an integral member of the engineering design team, in order to best complete the needs of the project.

STAFF

Millies Engineering Group is staffed by nearly 40 full-time employees, and led by a team of four principals. In total, the firm has professional licensure in 49 states.

HISTORY

Millies Engineering Group is an MEP Consulting Engineering firm established in April of 1975 by Ronald Millies as R. L. Millies & Associates, Inc. As of January 2012, the firm rebranded its logo and name to Millies Engineering Group.

HOURLY RATES

Principal \$275.00

Associate \$225.00

Project Engineer \$200.00

Project Designer \$165.00

Designer \$135.00

Design Draftsman \$110.00

Clerical \$100.00

SERVICES

MEP DESIGN ENGINEERING

Offering design of heating, air conditioning, ventilating, plumbing, fire protection, and electrical systems for new or existing facilities.

- Lighting Design - Interior and Site
- AV/IT System Design
- Alternative Energy Design - Photovoltaic, Wind Turbine, Geo Thermal, Thermal Storage, Land Fill Gas Micro Turbines
- Design administration including coordination with associated architectural and structural services to provide integrated plans and specifications
- Construction administration services including review of bid documents, pre-bid meetings, bid evaluation, shop drawing review, job progress meetings, field observation reports and project close out.
- Complete BIM and CADD Computer Aided design and drafting service including digitizing existing facility drawings, development of standards, details, and plotting.

SYSTEM ASSESSMENT SURVEYS & REPORTS

Offering survey and energy analysis of existing buildings including facility assessments, energy audits, code deficiency, life safety, operating cost analysis, recommendations for energy efficient modification and cost payback analysis including life cycle costing. Other services include engineering analysis and recommendations for facilities with existing problems related to heating, air conditioning, ventilation, plumbing, and electrical systems

FEASIBILITY STUDIES & REPORTS

Offering evaluation of alternative energy sources and energy conservation measures as they relate to the client's energy utilization needs.

LEED AP & COMMISSIONING SERVICES

LEED team leader services by a LEED Accredited Professional, and LEED MEP/FP and Energy Code Commissioning service.

TELEPHONE
219.924.8400



EMAIL
info@megce.com

Please refer to our website for an updated list of P.E. registrations and registrants listed under our firm profile and staff resumes.

ILLIANA CHRISTIAN HIGH SCHOOL NEW HIGH SCHOOL FACILITY



A new high school facility coming in at 110,000 square feet was commissioned - designed to be modern and energy efficient all while staying on budget. On behalf of ICHS, Millies submitted an application for and won an energy grant from Nisource, the local utility company. In addition to the construction of the new facility, a fundraiser was held to support the build-out of a new secondary gymnasium which would double as a performance space. Existing theatrical lighting and sound equipment was acquired from the school Alumni via the nearby Star Plaza Theatre. A highly functional building which minimized heating and cooling capacity requirements of the facility and maxed out its energy efficiency. The cost effective designed allowed the project to come in under the original budget. Additionally, thanks to the successful fundraising, a new gymnasium space was integrated into the project.

CLIENT:
AMDG Architects, Inc.

COST:
\$28,000,000

COMPLETED:
2018

BUILDER:
Core Construction

VALPARAISO UNIVERSITY NEIL SCIENCE CENTER IN NEW S.T.E.M. VILLAGE



In this highly collaborative, ground-up facility, Millies Engineering Group worked closely with both other contractors as well as representatives from the University. Covering 3-floors, the Neil's Science Center is part of a campus transformation project to address the need for more science classrooms and laboratories. This "S.T.E.M. Village" became a successful university campaign to support existing science programs and position itself for the cutting edge future. The state-of-the-art laboratories were designed to be as flexible as possible in order to facilitate interdisciplinary collaboration and research. Inside, students and faculty have access to a Microscopy Laboratory, a Molecular Biology & Cell Culture Laboratory, and a Cadaver Laboratory, which have proven to be well-received since the facility's completion in mid-2017.

LOCATION
Valparaiso, Indiana

SQUARE FOOTAGE:
55,000

COMPLETED:
2017



LOOKING GLASS THEATRE

FACILITY UPDATE AND TRANSFORMATION | 2013

CHICAGO, ILLINOIS



The design enabled the construction of two stages, and the main stage in particular allows Lookingglass to reconfigure both the stage and the audience based upon the needs of the production. At a maximum capacity of 240 persons, it is outfitted with a balcony fitting 60 total, a subtle architectural reference to the traditional playhouses in Victorian England around the time of Shakespeare. Additionally, the ceiling is stripped down, allowing the historic nature of the space influence the emotional feeling of the space. Apart from the main stage and supplementary second stage, the design added public and performer event space like lobbies, dressing

rooms, and concessions areas to support stakeholders in an holistic way. Like the built environment it inhabits, Lookingglass aims to be cutting edge in all meaningful ways. Founded in 1988 at nearby Northwestern University, after 2003 it has used this space to evolve into a nationwide leader in production and sharing its ensemble-based techniques with Chicago-area students and teachers. Despite their work being produced in over a dozen US cities, Lookingglass has certainly embraced their artistic voice as a Chicago flavor, winning the 2011 Tony Award for Outstanding Regional Theatre.

TELEPHONE
219.924.8400



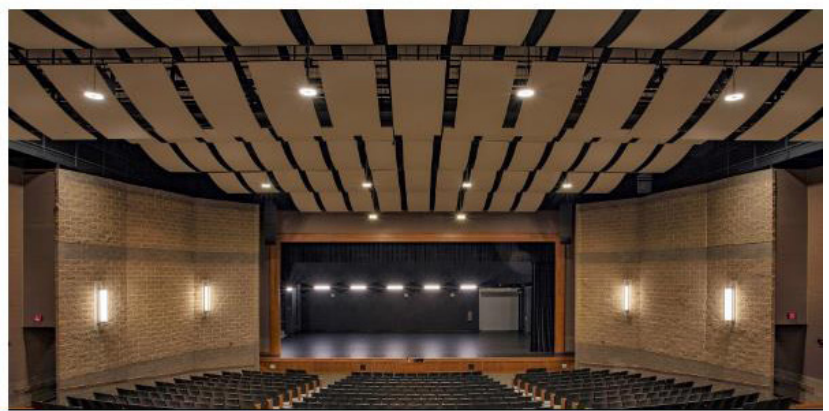
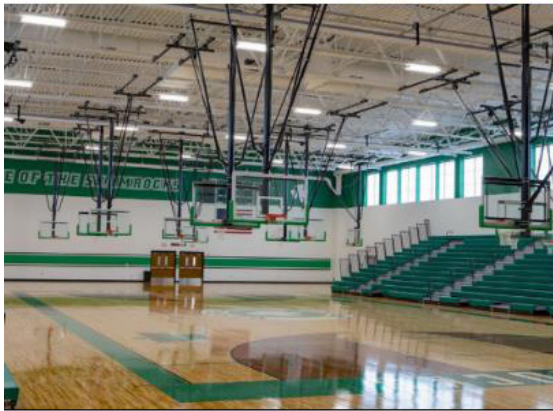
EMAIL
info@megce.com

Please refer to our website for an updated list of P.E. registrations and registrants listed under our firm profile and staff resumes.

BERRIEN SPRINGS PUBLIC SCHOOLS

PERFORMING ARTS ADDITION | 2022

BERRIEN SPRINGS, MICHIGAN



The Performing Arts Center provided access to classrooms & instructional space for the choir program, band program, drama & musical productions, and possibly technology-related programming such as robotics, computer science, and future technology-related programming. In addition, the facility includes auditorium style seating, storage areas and performing areas for the school district's Fine Arts programs. The full 72,000-plus square foot facility features a 750-seat performance arts theater, a gymnasium with a tournament court as well as three practice courts, band and choir practice rooms, space for wrestling and cheer practice, locker rooms, a fitness/weightlifting center, and more.

Prior to the new facilities, choir students go to the middle school for class, band students used the cafeteria and athletes would be forced to have practices late at night or early in the morning due to lack of space. The project, along with the football field

upgrades, were part of a master plan completed in 2016. Voters approved this project via a \$19.73 million bond approved by voters in 2018. Now, Berrien Springs has a state-of-the-art facility with room for everyone, and then some.

"We've not only built the facility to meet the current need but to try to anticipate future needs," said Superintendent David Eichberg. "The hope was that we were good stewards with the money that we were given by the community. We invested that money well, not only for today but the future. The facility is built to hopefully address future needs and future growth in the district." "Students, teachers, coaches and administrators alike have been thrilled with the the finished product.

"I smile every time I walk in the door," said Assistant Superintendent Dr. Thomas Bruce. "Each of these rooms are incredible in themselves."

TELEPHONE
219.924.8400



EMAIL
name@megce.com

Please refer to our website for an updated list of P.E. registrations and registrants listed under our firm profile and staff resumes.



Linden Group Architects

Contact: Michael Matthys

10100 Orland Parkway suite 110

Orland Park, Illinois, 60467

708-799-4400

mmatthys@lindengroupinc.com