

# HOMEWOOD SUBSTATION

## APPEARANCE COMMITTEE REVIEW

04.02.2026



## MODERN MINIMALISM

- ACCENTUATED ENTRANCE THAT CREATES HUMAN-SCALE ELEMENTS ALONG THE STREET
- UNIFIED DESIGN LANGUAGE CONSISTENT WITH THE NORTH METRA STATION ON HARWOOD AVE.



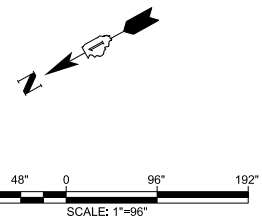
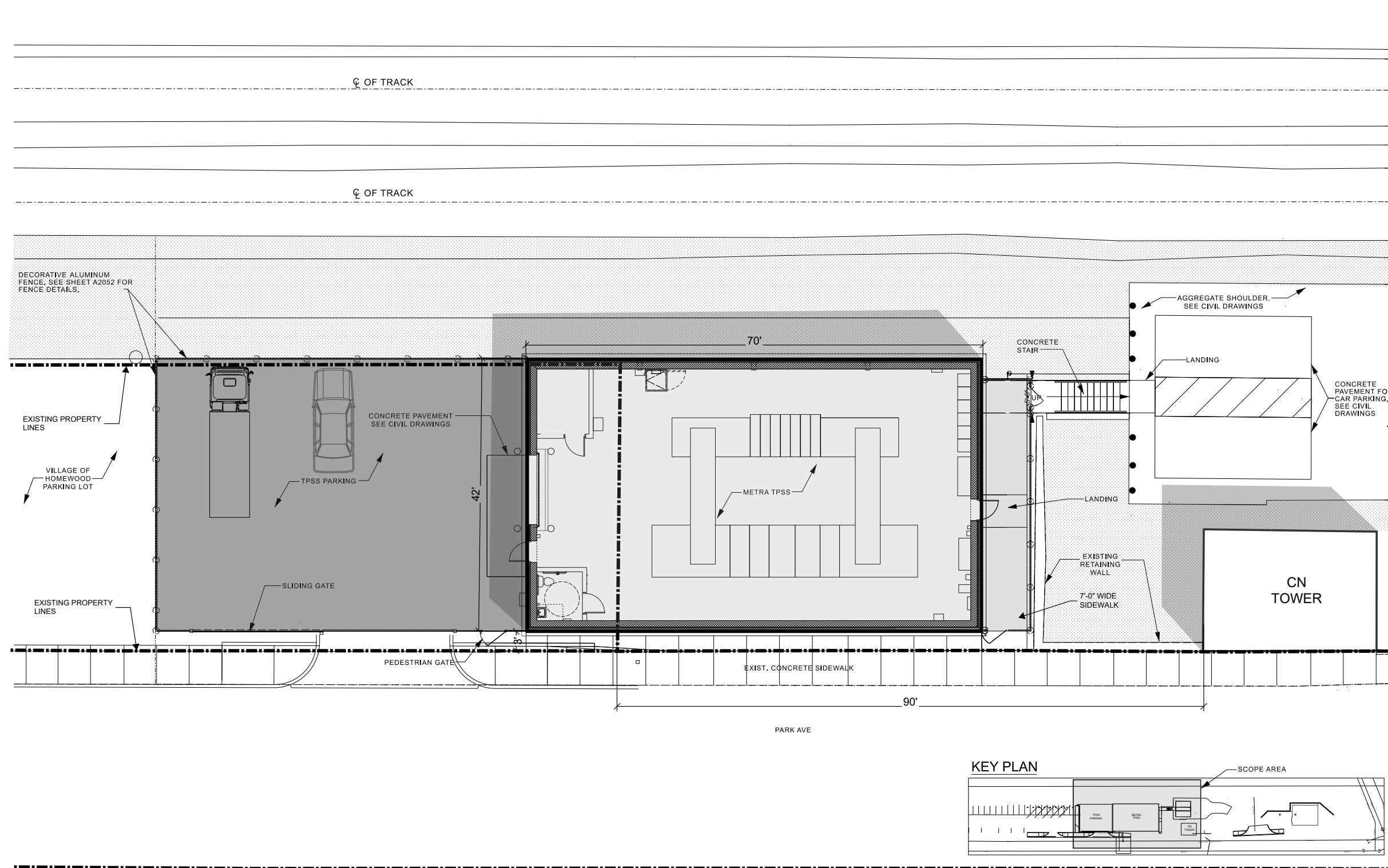


## MODERN MINIMALISM

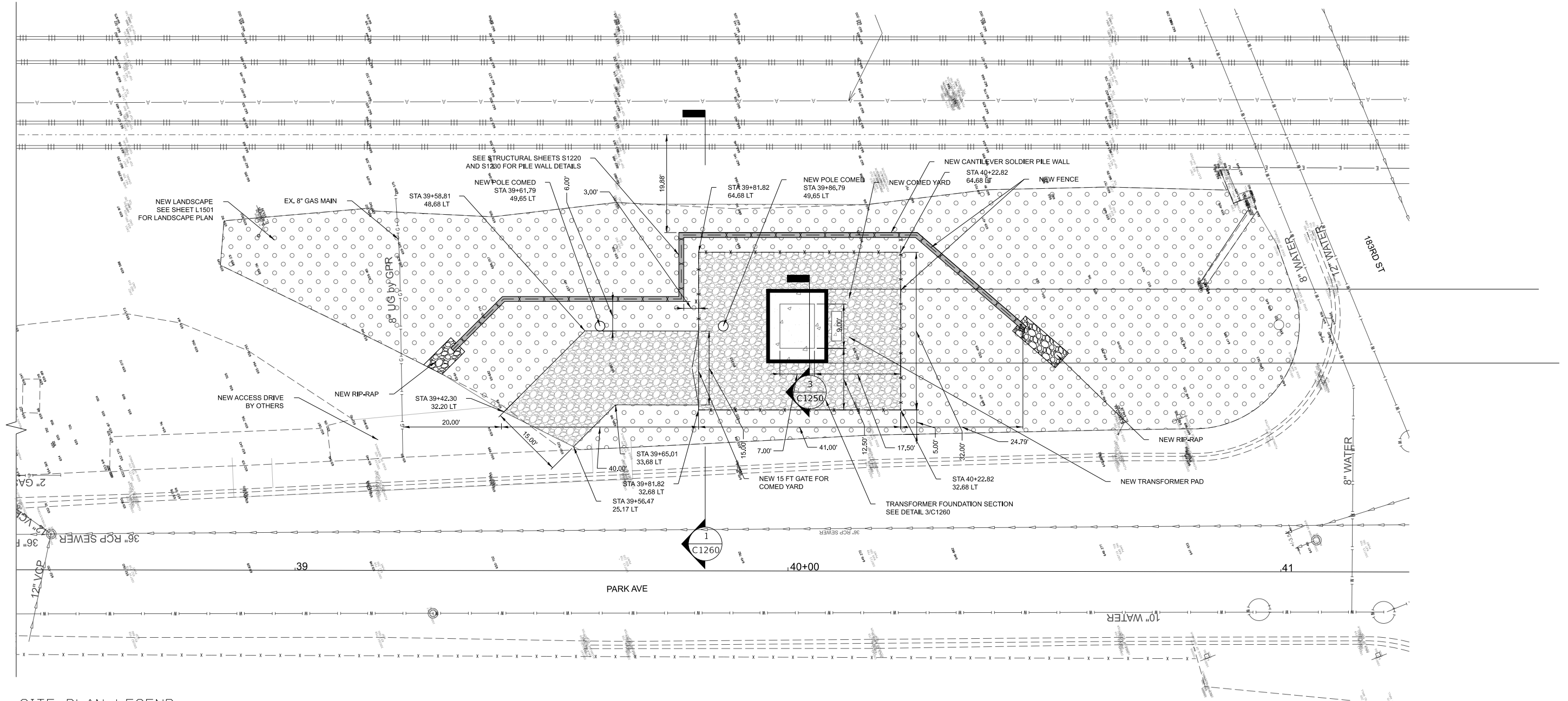
- A FEATURED TEXTURED UPPER FAÇADE THAT HIGHLIGHTS THE ENTRY AND STRENGTHENS THE BUILDING'S MINIMALIST EXPRESSION
- A PROGRAM-FOCUSED, ECONOMICAL DESIGN THAT RESPONDS SENSITIVELY TO ITS NEIGHBORS



# SITE PLAN



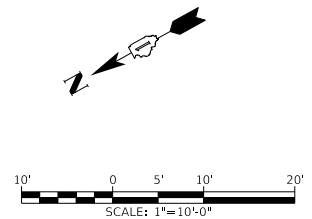
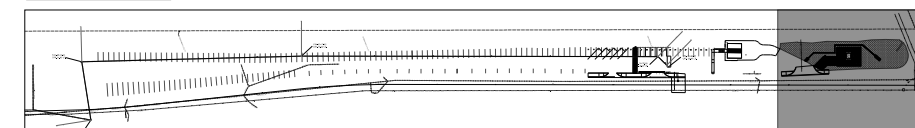
# SITE PLAN | COMED



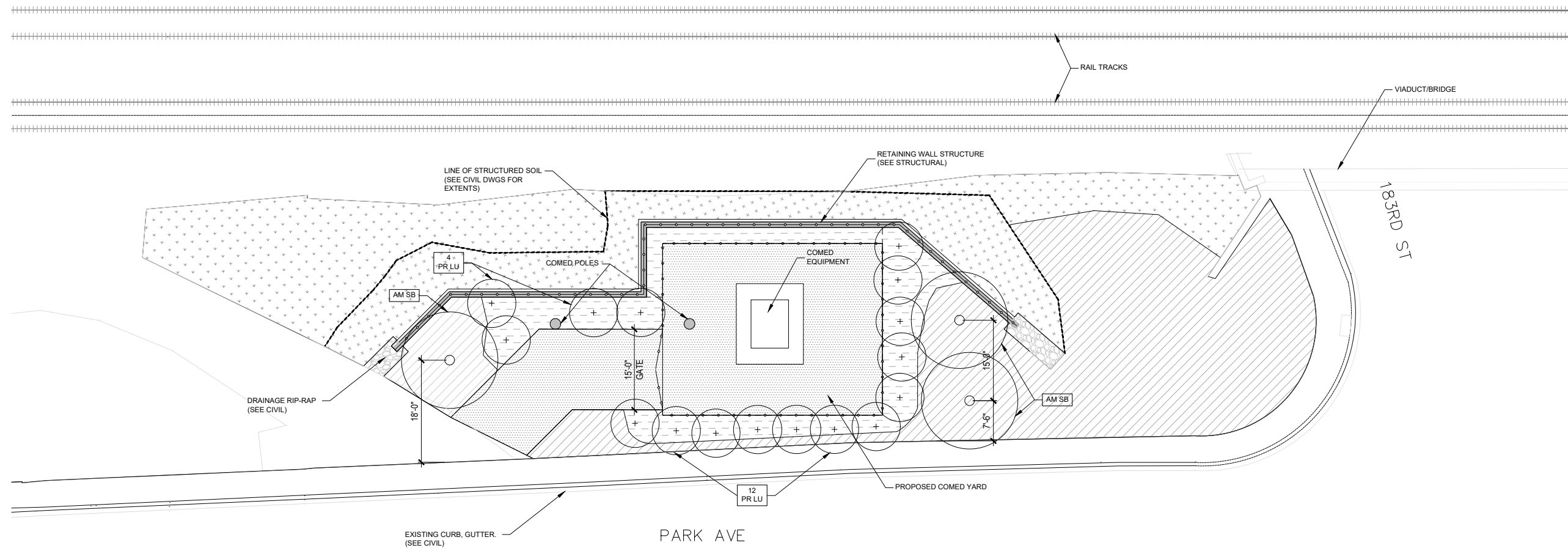
## SITE PLAN LEGEND

—T—	EX. TELEPHONE	—G—	EX. GUARD RAIL
—FO—	EX. FIBER OPTIC	—S—	EX. SIGN
◇	EX. UTILITY POLE	∞	EX. VEGETATION/ TREE
—A—	EX. AERIAL LINES	—	EX. SIDEWALK
—E—	EX. ELECTRIC LINE	—G—	EX. CURB AND GUTTER
■	EX. TRAFFIC SIGNAL STRUCTURE	▨	NEW GRAVEL
⊗	EX. STREET LIGHT	▨	NEW LANDSCAPE SEE SHEET L1501 FOR LANDSCAPE PLAN
○	EX. MANHOLE (SEWER, WATER, ELECTRIC)	▨	NEW CONCRETE PAD
—S—	EX. COMBINED SEWER	▨	NEW RETAINING WALL
○	EX. CATCH BASIN	—F—	NEW FENCE
—	EX. STORM SEWER		
+	EX. BUFFALO BOX		
⊙	EX. FIRE HYDRANT		
—W—	EX. WATERMAIN		
⊙	EX. GAS VALVE		
—G—	EX. GAS MAIN		
—X—	EX. FENCE LINE		

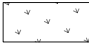





## KEY PLAN



# SITE PLAN | COMED LANDSCAPE PLAN



## PLAN LEGEND

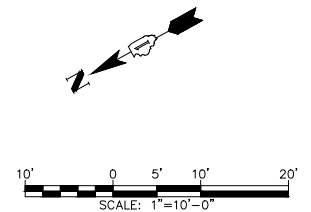
-  GRASS (SOD)  
(SEE SCHEDULE THIS SHEET)
-  GROUND COVER  
PLANTED IN MULCH BED  
(SEE SCHEDULE THIS SHEET)
-  MULCH  
(SEE SCHEDULE THIS SHEET)
-  GRAVEL, ACCESS ROAD &  
EQUIPMENT YARD  
(SEE CIVIL)
-  RETAINING WALL  
(SEE STRUCTURAL)
-  CHAINLINK FENCE  
(SEE CIVIL)

PLANT SCHEDULE						
KEY	COMMON NAME	SCIENTIFIC NAME	SIZE	QUANTITY	SPACING	NOTES
PR LU	SKIP LAUREL	PRUNUS LAUROCERASUS 'SCHIPKAENSIS'	48" TALL	16	AS SHOWN	PLANTED IN MULCH BED
AM SB	SERVICEBERRY	AMELANCHIER	3" CALIPER	3	-	STAKED/SCREWED W/ WIRES & INSTALLED W/ SLOW-RELEASE WATER BAGS
JU HO	CREeping JUNIPER	JUNIPERUS HORIZONTALIS	GROUND COVER (1 GAL POTS)	-	18" EACH WAY	PLANTED IN MULCH BED (2950 TOTAL SF)

MATERIAL SCHEDULE			
ITEM	KEY	AREA	NOTES
GRASS (SOD)	SOD	2970 sq.ft	PROVIDE DROUGHT-TOLERANT SPECIES SUCH AS TALL FESCUE (FESTUCA ARUNDINACEA). FINAL SELECTION TO BE APPROVED BY VILLAGE
MULCH	MU	3860 sq.ft	PROVIDE CLEAN, SHREDDED HARDWOOD BARK MULCH. FINAL SELECTION TO BE APPROVED BY VILLAGE. (INCLUDES GROUND COVER BEDS)

## PLANTING NOTES:

1. PROVIDE PLANT SAMPLES OR PHOTOGRAPHS OF EACH PLANT SPECIFIED TO THE LANDSCAPE ARCHITECT FOR COMPLIANCE REVIEW PRIOR TO INSTALLATION.
2. PROTECT PLANT MATERIAL DURING DELIVERY TO PREVENT DAMAGE TO ROOT BALLS, TRUNKS, BRANCHES AND THE DESICCATION OF LEAVES. PROTECT PLANT MATERIAL DURING SHIPPING WITH SHADE CLOTH OR SHIP WITH ENCLOSED TRANSPORT. MAINTAIN PROTECTIONS AND HEALTH OF PLANT MATERIAL STORED ON SITE. HANDLE TREES WITH NYLON STRAPS. NO CHAINS OR CABLES WILL BE ALLOWED. REMOVE UNACCEPTABLE PLANT MATERIAL IMMEDIATELY FROM THE SITE.
3. VERIFY PLANTING PRODUCTS, PLANT MATERIAL, AND PLANT QUANTITIES DELIVERED TO THE SITE MATCH WHAT IS INDICATED ON THE PLANS AND SPECIFICATIONS.
4. STAKE BED LINES AND TREE LOCATIONS FOR THE DESIGNATED REPRESENTATIVE REVIEW PRIOR TO INSTALLATION. PLANTING PROCEDURES ARE SUBJECT TO THE REVIEW OF THE DESIGNATED REPRESENTATIVE AND THE CONTRACTOR SHALL CORRECT ANY DEFICIENCIES FOUND AT NO ADDITIONAL COST TO THE OWNER.
5. REFER TO VILLAGE STANDARDS FOR SIMILAR PLANTING REQUIREMENTS, INCLUDING MINIMUM SIZE AND WIDTH OF PLANTING PITS AND BEDS, GUYING AND STAKING, MULCHING, AND OTHER PLANTING REQUIREMENTS.
6. ROOT BALLS SHALL CONFORM TO THE SIZE STANDARDS SET FORTH IN "AMERICAN STANDARDS FOR NURSERY STOCK".
7. PLANT MATERIAL DELIVERED TO THE SITE IS SUBJECT TO THE REVIEW OF THE DESIGNATED REPRESENTATIVE BEFORE, DURING AND AFTER INSTALLATION.
8. TEST FILL EACH TREE AND PLANTING PIT WITH WATER PRIOR TO PLANTING TO ASSURE PROPER SOIL PERCOLATION. PITS WHICH DO NOT ADEQUATELY DRAIN SHALL BE FURTHER SCARIFIED ALONG OUTER EDGES AND SIDES OF PIT. DO NOT DISTURB AREA SUPPORTING TREE BALL. REPEAT TEST. ALLOWANCES WILL NOT BE MADE FOR PLANT MATERIAL LOSS DUE TO IMPROPER DRAINAGE.
9. REMOVE PLANTING AND LANDSCAPE DEBRIS FROM THE PROJECT SITE AND SWEEP AND WASH CLEAN PAVED AND FINISHED SURFACES AFFECTED BY THE LANDSCAPE INSTALLATION.
10. PLANTING AREAS SHALL BE WEED FREE PRIOR TO PLANTING INSTALLATION AND MAINTAINED WEED FREE THROUGH FINAL ACCEPTANCE.



# VIEW FROM WEST



# VIEW FROM NORTHWEST



# VIEW FROM SOUTHWEST



# VIEW FROM NORTHEAST



# MATERIALITY



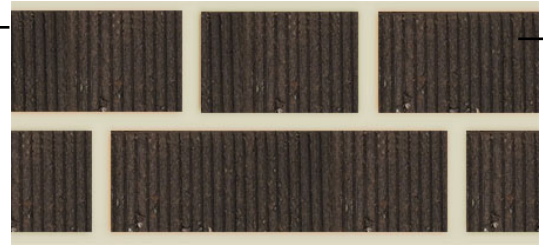
**CEDAR RIDGE+ QUEENSTOWN VERTEX**



**FLEMISH BOND  
ACCENTUATED WITH  
QUEENSTOWN VERTEX**

**LED LIGHT BETWEEN BRICKS**

**QUEENSTOWN VERTEX**



**FLEMISH BOND COLOR  
MATCHED WITH CN TOWER  
BRICK**

**SUMMER YELLOW  
ALUMINUM COMPOSITE PANEL  
MATCHED WITH HARWOOD AVE.  
STATION**

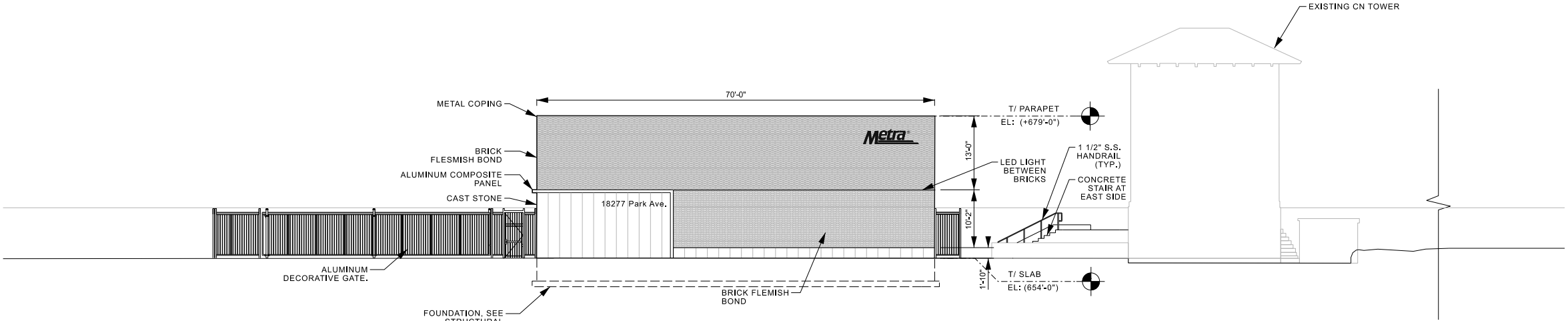
**CAST STONE  
MATCHES WITH HARWOOD AVE.  
STATION**



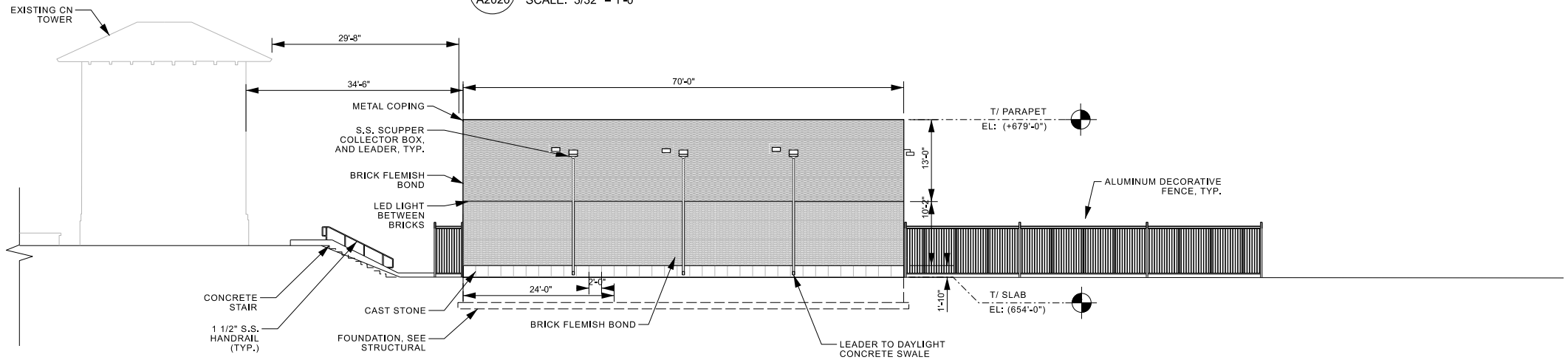
# RENDERINGS



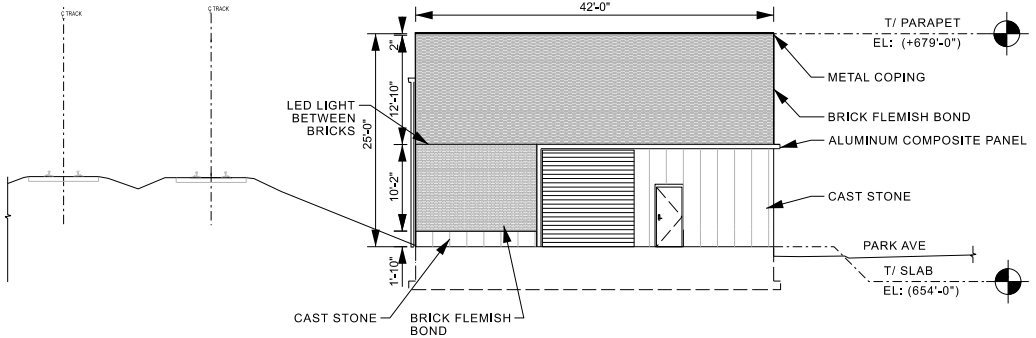
# ELEVATIONS



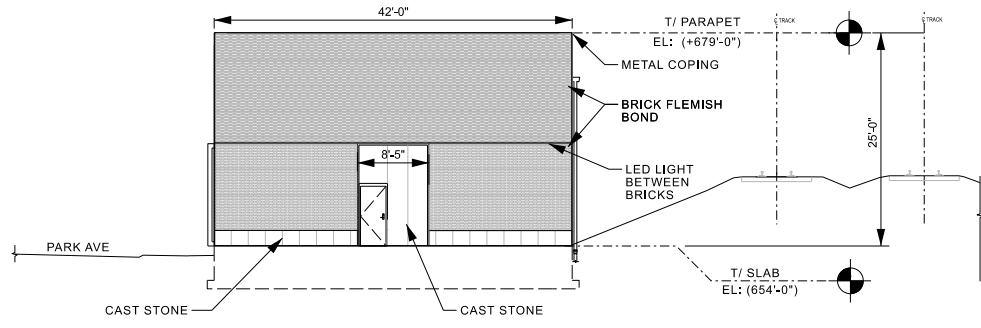
1 WEST ELEVATION  
A2020 SCALE: 3/32" = 1'-0"



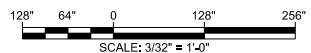
2 EAST ELEVATION  
A2020 SCALE: 3/32" = 1'-0"



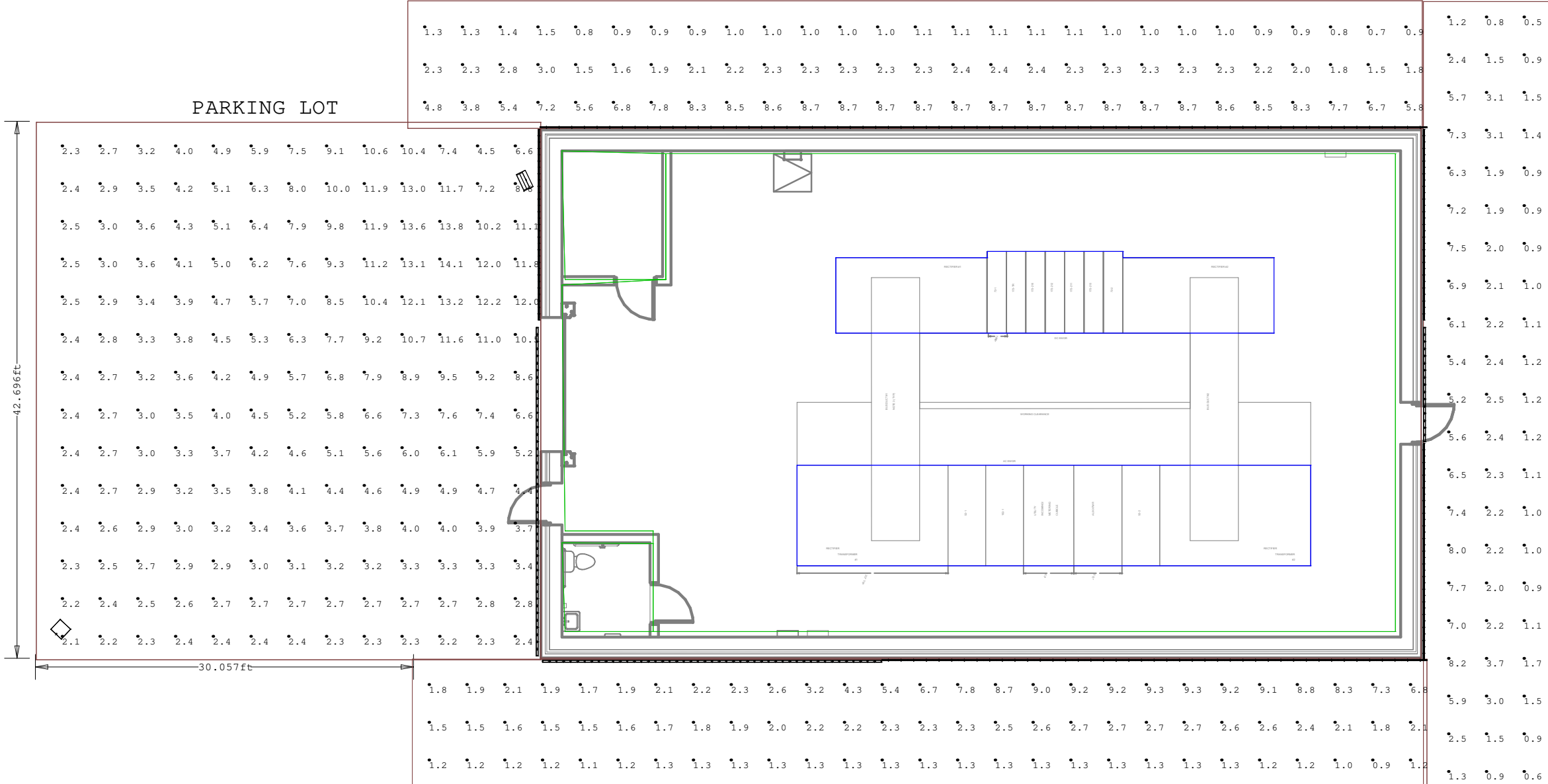
3 NORTH ELEVATION  
A2020 SCALE: 3/32" = 1'-0"



4 SOUTH ELEVATION  
A2020 SCALE: 3/32" = 1'-0"



# LIGHTING PLAN



Calculation Summary							
Label	CalcType	Units	Avg	Max	Min	Avg/Min	Max/Min
NORTH WALKWAY_Top	Illuminance	Fc	3.00	9.3	0.9	3.33	10.33
Parking Lot_Top	Illuminance	Fc	5.32	14.1	2.1	2.53	6.71
SOUTH WALKWAY_Top	Illuminance	Fc	3.64	8.7	0.7	5.20	12.43
WEST Walkway_Top	Illuminance	Fc	3.01	8.2	0.5	6.02	16.40

Luminaire Schedule									
Symbol	Qty	Label	Arrangement	Description	LLF	Luminaire Lumens	Luminaire Watts	Total Watts	Mounting Height (ft)
	1	DSX1 LED P1 40K 80CRI TFTM	Single	DSX1 LED P1 40K 80CRI TFTM	0.600	7120	50.9	50.9	18
	160	VERS-04-SW-1_5-30-WET-GZR-ST	Single	N_A	0.600	169	1.68	268.8	10
	1	NHRS100UBZ740_50percent_24137	Single	NHRS100UBZ740-50_	0.600	24137	143.2	143.2	15
	55	L50-E-12-02-40-90-MULT-LOL	Single	L50-E-12-02-40-90-MULT-LOL	0.600	68	2	110	10

## METRA HOMEWOOD EXTERIOR SUBSTATION LIGHTING LAYOUT

***GFT***

***Metra*** **HATCH**