

EXTERIOR ELEVATION MATERIALS LEGEND	
MARK	DESCRIPTION
A	ARCHITECTURAL CEMENT BOARD SIDING (BRK-2)
B	ARCHITECTURAL CEMENT BOARD SIDING (BRK-1)
C	BRAKE METAL FASCIA (MP-2)
D	SOFFIT PANELS (MP-2)
E	STANDING SEAM ROOF PANELS (MP-2)
F	METAL BRAKE CAP (MP-3)
G	VERTICAL METAL SIDING (MP-1)
H	SPANDREL GLAZING

EXTERIOR ELEVATION KEYNOTES	
MARK	DESCRIPTION
1	SITE BUILT CANOPY; REF STRUCTURAL
2	SURFACE-MOUNTED SHIELDED LED NEON FLEX LIGHTING AS INDICATED (SHOWN DASHED), TYP: REF ELECTRICAL
3	MOUNTED SPEAKER SYSTEM; REF SYSTEMS PLAN
4	CANOPY HEATER
5	ADDRESS NUMBERS TO BE 8" TALL x 2" BRUSH STROKE
6	FROST-PROOF FLUSH HOSE BIB
7	EXTERIOR WEATHER-PROOF OUTLET; REF ELECTRICAL
8	KNOX BOX
9	OUTLINE OF MECHANICAL UNIT BEYOND
10	DISPLAYS2GO MODEL: LEDOD2436 SILVER FRAME SURFACE-MOUNTED LIGHTED SIGN BOX
11	ROUND STOREFRONT SIGN; SUPPLIED AND INSTALLED BY SIGN CONTRACTOR
12	1/4" THICK ACRYLIC SIGNAGE APPLIED TO SIDING WITH VH DOUBLE SIDE TAPE
13	ILLUMINATED STOREFRONT SIGNAGE BY SIGN CONTRACTOR
14	EXTERIOR SECURITY LIGHT
15	PAINTED STRUCTURAL CANOPY COLUMN; REF CIVIL
16	GAS METER, PAINTED TO MATCH BUILDING; REF PLUMBING
17	PAINTED STRUCTURAL CANOPY COLUMN; RAINWATER DOWNSPOUT WITHIN; CONNECT BASE OF CANOPY COLUMN DOWNSPOUT TO STORMWATER MANAGEMENT SYSTEM; REF CIVIL
18	OPEN-TOP SCUPPER PER TPO MANUF'S INSTALLATION INSTRUCTIONS: 4" MIN WIDTH' 3" MIN OVERHANG W/ SHARP EDGE
19	DOWNSPOUT OUTLET; CONNECT TO SUBGRADE STORMWATER CONNECTION; REF CIVIL
20	TEMPORARY CANVAS CRAFT WARMING HUT
21	CUSTOM FABRICATED OSHA/IBC COMPLIANT ROOF ACCESS LADDER
22	GUTTER AND DOWNSPOUT
23	DAYLIGHT ROOF OVERFLOW DRAIN; TRIM WITH BRASS LAMBS TONGUE

EXTERIOR ELEVATION COOLER GLAZING SUMMARY		
SOUTH ELEVATION - 715F TOTAL MAIN LEVEL FACADE AREA BETWEEN 2'-6" AND 7'-0" (100%)		
MATERIAL	MAX % / SF	PROPOSED % / SF
GLASS	MIN 30 % / 215F	PROPOSED 88 % / 635F



**1 EXTERIOR ELEVATION - SOUTH**  
3/8" = 1'-0"

7 BREW DRIVE THRU - HOMEWOOD - HALSTED  
WHO BREW, LLC  
17855 South Halsted Street, Homewood, Illinois 60430

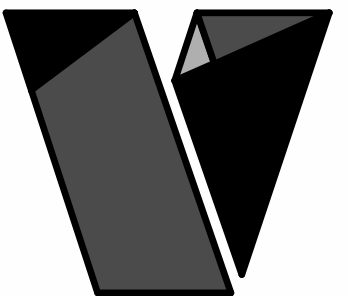
REVISIONS		
No.	Description	Date

sheet issue date:  
4/13/26

project no.:  
23.43.61

sheet contents:  
EXTERIOR ELEVATIONS

sheet no.:  
**A2.0**



veritas  
architecture + design

707 n. 6th street  
kansas city, ks 66101  
www.veritas-ad.com  
913.308.1460

consulting engineer:

7 BREW DRIVE THRU - HOMEWOOD - HALSTED  
WHO BREW, LLC  
17855 South Halsted Street, Homewood, Illinois 60430

REVISIONS  
No. Description Date

sheet issue date:  
4/13/26

project no.:  
23.43.61

sheet contents:  
EXTERIOR ELEVATIONS

sheet no.:

A2.1

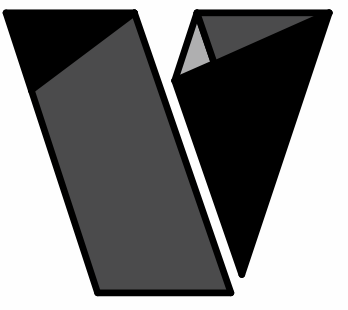
EXTERIOR ELEVATION MATERIALS LEGEND	
MARK	DESCRIPTION
A	ARCHITECTURAL CEMENT BOARD SIDING (BRK-2)
B	ARCHITECTURAL CEMENT BOARD SIDING (BRK-1)
C	BRAKE METAL FASCIA (MP-2)
D	SOFFIT PANELS (MP-2)
E	STANDING SEAM ROOF PANELS (MP-2)
F	METAL BRAKE CAP (MP-3)
G	VERTICAL METAL SIDING (MP-1)
H	SPANDREL GLAZING

EXTERIOR ELEVATION KEYNOTES	
MARK	DESCRIPTION
1	SITE BUILT CANOPY; REF STRUCTURAL
2	SURFACE-MOUNTED SHIELDED LED NEON FLEX LIGHTING AS INDICATED (SHOWN DASHED), TYP; REF ELECTRICAL
3	MOUNTED SPEAKER SYSTEM; REF SYSTEMS PLAN
4	CANOPY HEATER
5	ADDRESS NUMBERS TO BE 8" TALL x 2" BRUSH STROKE
6	FROST-PROOF FLUSH HOSE BIB
7	EXTERIOR WEATHER-PROOF OUTLET; REF ELECTRICAL
8	KNOX BOX
9	OUTLINE OF MECHANICAL UNIT BEYOND
10	DISPLAYS2GO MODEL: LEDOD2436 SILVER FRAME SURFACE-MOUNTED LIGHTED SIGN BOX
11	ROUND STOREFRONT SIGN; SUPPLIED AND INSTALLED BY SIGN CONTRACTOR
12	1/4" THICK ACRYLIC SIGNAGE APPLIED TO SIDING WITH VH DOUBLE SIDE TAPE
13	ILLUMINATED STOREFRONT SIGNAGE BY SIGN CONTRACTOR
14	EXTERIOR SECURITY LIGHT
15	PAINTED STRUCTURAL CANOPY COLUMN; REF CIVIL
16	GAS METER, PAINTED TO MATCH BUILDING; REF PLUMBING
17	PAINTED STRUCTURAL CANOPY COLUMN; RAINWATER DOWNSPOUT WITHIN; CONNECT BASE OF CANOPY COLUMN DOWNSPOUT TO STORMWATER MANAGEMENT SYSTEM; REF CIVIL
18	OPEN-TOP SCUPPER PER TPO MANUF'S INSTALLATION INSTRUCTIONS; 4" MIN WIDTH' 3" MIN OVERHANG W/ SHARP EDGE
19	DOWNSPOUT OUTLET; CONNECT TO SUBGRADE STORMWATER CONNECTION; REF CIVIL
20	TEMPORARY CANVAS CRAFT WARMING HUT
21	CUSTOM FABRICATED OSHA/IBC COMPLIANT ROOF ACCESS LADDER
22	GUTTER AND DOWNSPOUT
23	DAYLIGHT ROOF OVERFLOW DRAIN; TRIM WITH BRASS LAMBS TONGUE

EXTERIOR ELEVATION COOLER GLAZING SUMMARY		
NORTH ELEVATION - 715F TOTAL MAIN LEVEL FACADE AREA BETWEEN 2'-6" AND 7'-0" (100%)		
MATERIAL	MAX % / SF	PROPOSED % / SF
GLASS	MIN 30 % / 215F	PROPOSED 42 % / 305F



**1** EXTERIOR ELEVATION - NORTH  
3/8" = 1'-0"



veritas  
architecture + design

707 n. 6th street  
kansas city, ks 66101  
www.veritas-ad.com  
913.308.1460

consulting engineer:

7 BREW DRIVE THRU - HOMEWOOD - HALSTED

WHO BREW, LLC

17855 South Halsted Street, Homewood, Illinois 60430

REVISIONS  
No. Description Date

sheet issue date:  
4/13/26

project no.:  
23.43.61

sheet contents:  
EXTERIOR ELEVATIONS

sheet no.:

A2.2

### EXTERIOR ELEVATION MATERIALS LEGEND

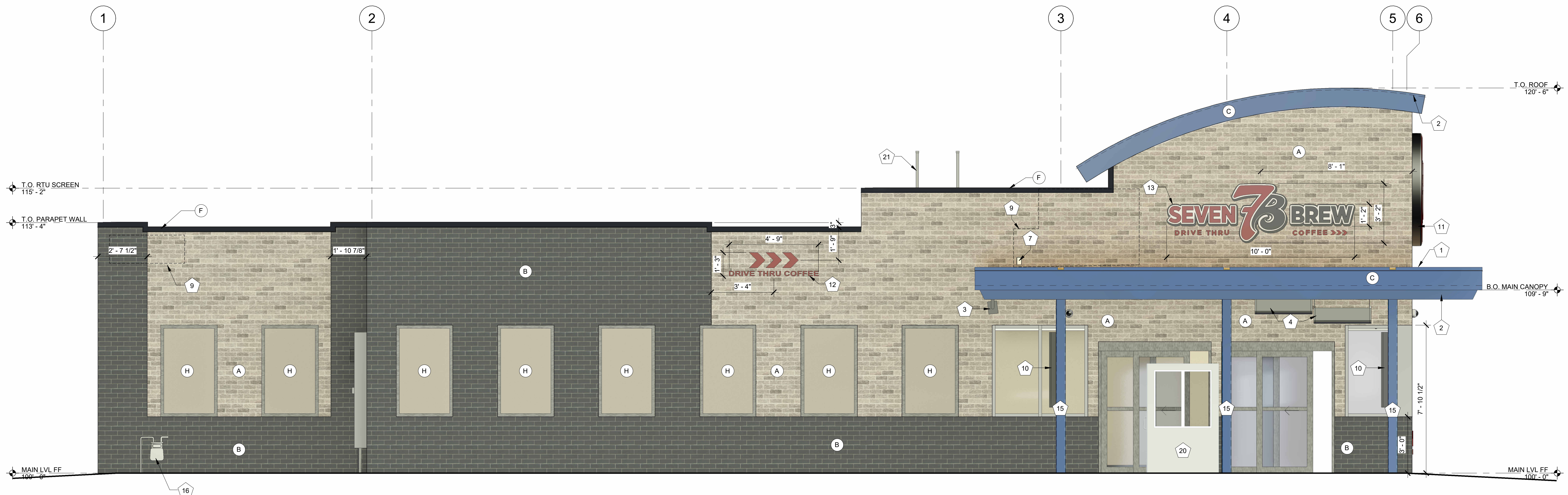
MARK	DESCRIPTION
A	ARCHITECTURAL CEMENT BOARD SIDING (BRK-2)
B	ARCHITECTURAL CEMENT BOARD SIDING (BRK-1)
C	BRAKE METAL FASCIA (MP-2)
D	SOFFIT PANELS (MP-2)
E	STANDING SEAM ROOF PANELS (MP-2)
F	METAL BRAKE CAP (MP-3)
G	VERTICAL METAL SIDING (MP-1)
H	SPANDREL GLAZING

### EXTERIOR ELEVATION KEYNOTES

MARK	DESCRIPTION
1	SITE BUILT CANOPY; REF STRUCTURAL
2	SURFACE-MOUNTED SHIELDED LED NEON FLEX LIGHTING AS INDICATED (SHOWN DASHED), TYP; REF ELECTRICAL
3	MOUNTED SPEAKER SYSTEM; REF SYSTEMS PLAN
4	CANOPY HEATER
5	ADDRESS NUMBERS TO BE 8" TALL x 2" BRUSH STROKE
6	FROST-PROOF FLUSH HOSE BIB
7	EXTERIOR WEATHER-PROOF OUTLET; REF ELECTRICAL
8	KNOX BOX
9	OUTLINE OF MECHANICAL UNIT BEYOND
10	DISPLAYS2GO MODEL: LEDOD2436 SILVER FRAME SURFACE-MOUNTED LIGHTED SIGN BOX
11	ROUND STOREFRONT SIGN; SUPPLIED AND INSTALLED BY SIGN CONTRACTOR
12	1/4" THICK ACRYLIC SIGNAGE APPLIED TO SIDING WITH VH DOUBLE SIDE TAPE
13	ILLUMINATED STOREFRONT SIGNAGE BY SIGN CONTRACTOR
14	EXTERIOR SECURITY LIGHT
15	PAINTED STRUCTURAL CANOPY COLUMN; REF CIVIL
16	GAS METER, PAINTED TO MATCH BUILDING; REF PLUMBING
17	PAINTED STRUCTURAL CANOPY COLUMN; RAINWATER DOWNSPOUT WITHIN; CONNECT BASE OF CANOPY COLUMN DOWNSPOUT TO STORMWATER MANAGEMENT SYSTEM; REF CIVIL
18	OPEN-TOP SCUPPER PER TPO MANUF'S INSTALLATION INSTRUCTIONS; 4" MIN WIDTH 3" MIN OVERHANG W/ SHARP EDGE
19	DOWNSPOUT OUTLET; CONNECT TO SUBGRADE STORMWATER CONNECTION; REF CIVIL
20	TEMPORARY CANVAS CRAFT WARMING HUT
21	CUSTOM FABRICATED OSHA/IBC COMPLIANT ROOF ACCESS LADDER
22	GUTTER AND DOWNSPOUT
23	DAYLIGHT ROOF OVERFLOW DRAIN; TRIM WITH BRASS LAMBS TONGUE

### EXTERIOR ELEVATION COOLER GLAZING SUMMARY

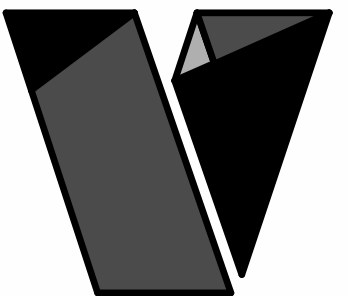
WEST ELEVATION - 3145F TOTAL MAIN LEVEL FACADE AREA BETWEEN 2'-6" AND 7'-0" (100%)		
MATERIAL	MAX % / SF	PROPOSED % / SF
GLASS	MIN 60 % / 1885F	PROPOSED 64 % / 2045F



**1** EXTERIOR ELEVATION - WEST  
3/8" = 1'-0"

This drawing is an instrument of service and, as such, shall remain the property of Veritas Architecture and Design LLC. Unauthorized use or reproduction without permission is prohibited. This document is for use in connection with the specified project and shall not be used for other locations. © 2023

4/13/2026 4:56:59 PM C:\Users\seam\Documents\23.43.61\_Homewood IL- Halsted Entitlement\_R24\_sam6QWCY.rvt



veritas  
architecture + design

707 n. 6th street  
kansas city, ks 66101  
www.veritas-ad.com  
913.308.1460

consulting engineer:

7 BREW DRIVE THRU - HOMEWOOD - HALSTED

WHO BREW, LLC

17855 South Halsted Street, Homewood, Illinois 60430

REVISIONS  
No. Description Date

sheet issue date:  
4/13/26

project no.:  
23.43.61

sheet contents:  
EXTERIOR ELEVATIONS

sheet no.:

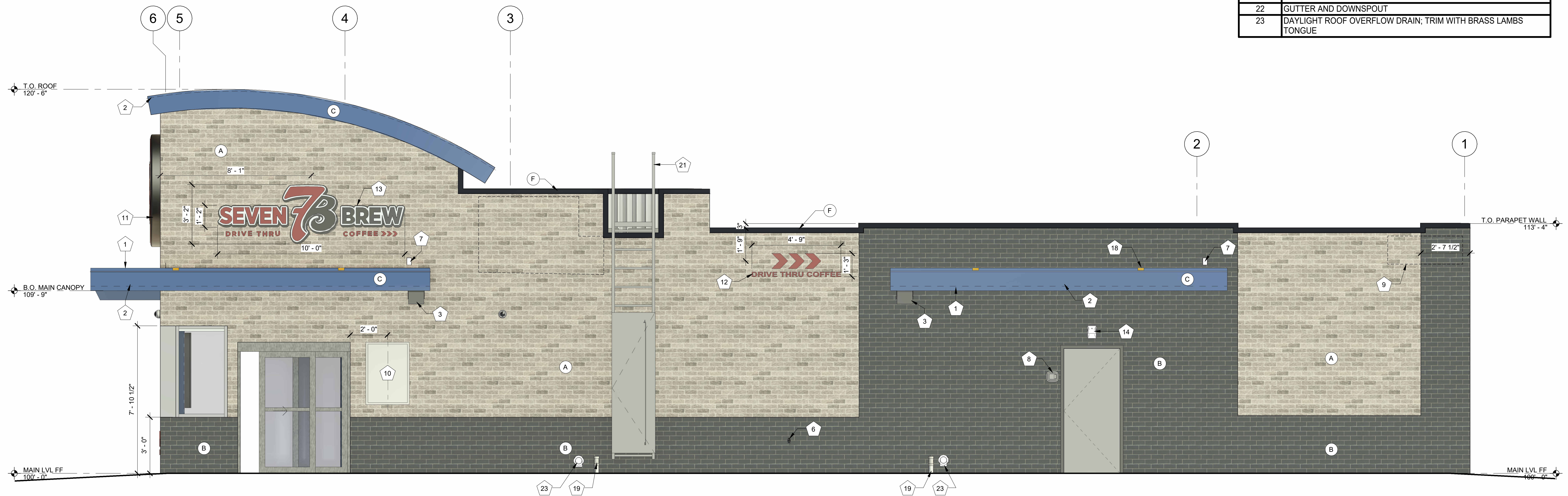
A2.3

### EXTERIOR ELEVATION MATERIALS LEGEND

MARK	DESCRIPTION
A	ARCHITECTURAL CEMENT BOARD SIDING (BRK-2)
B	ARCHITECTURAL CEMENT BOARD SIDING (BRK-1)
C	BRAKE METAL FASCIA (MP-2)
D	SOFFIT PANELS (MP-2)
E	STANDING SEAM ROOF PANELS (MP-2)
F	METAL BRAKE CAP (MP-3)
G	VERTICAL METAL SIDING (MP-1)
H	SPANDREL GLAZING

### EXTERIOR ELEVATION KEYNOTES

MARK	DESCRIPTION
1	SITE BUILT CANOPY; REF STRUCTURAL
2	SURFACE-MOUNTED SHIELDED LED NEON FLEX LIGHTING AS INDICATED (SHOWN DASHED), TYP; REF ELECTRICAL
3	MOUNTED SPEAKER SYSTEM; REF SYSTEMS PLAN
4	CANOPY HEATER
5	ADDRESS NUMBERS TO BE 8" TALL x 2" BRUSH STROKE
6	FROST-PROOF FLUSH HOSE BIB
7	EXTERIOR WEATHER-PROOF OUTLET; REF ELECTRICAL
8	KNOX BOX
9	OUTLINE OF MECHANICAL UNIT BEYOND
10	DISPLAYS2GO MODEL: LEDOD2436 SILVER FRAME SURFACE-MOUNTED LIGHTED SIGN BOX
11	ROUND STOREFRONT SIGN; SUPPLIED AND INSTALLED BY SIGN CONTRACTOR
12	1/4" THICK ACRYLIC SIGNAGE APPLIED TO SIDING WITH VH DOUBLE SIDE TAPE
13	ILLUMINATED STOREFRONT SIGNAGE BY SIGN CONTRACTOR
14	EXTERIOR SECURITY LIGHT
15	PAINTED STRUCTURAL CANOPY COLUMN; REF CIVIL
16	GAS METER, PAINTED TO MATCH BUILDING; REF PLUMBING
17	PAINTED STRUCTURAL CANOPY COLUMN; RAINWATER DOWNSPOUT WITHIN; CONNECT BASE OF CANOPY COLUMN DOWNSPOUT TO STORMWATER MANAGEMENT SYSTEM; REF CIVIL
18	OPEN-TOP SCUPPER PER TPO MANUF'S INSTALLATION INSTRUCTIONS: 4" MIN WIDTH' 3" MIN OVERHANG W/ SHARP EDGE
19	DOWNSPOUT OUTLET; CONNECT TO SUBGRADE STORMWATER CONNECTION; REF CIVIL
20	TEMPORARY CANVAS CRAFT WARMING HUT
21	CUSTOM FABRICATED OSHA/IBC COMPLIANT ROOF ACCESS LADDER
22	GUTTER AND DOWNSPOUT
23	DAYLIGHT ROOF OVERFLOW DRAIN; TRIM WITH BRASS LAMBS TONGUE



## 1 EXTERIOR ELEVATION - EAST

3/8" = 1'-0"

REVISIONS

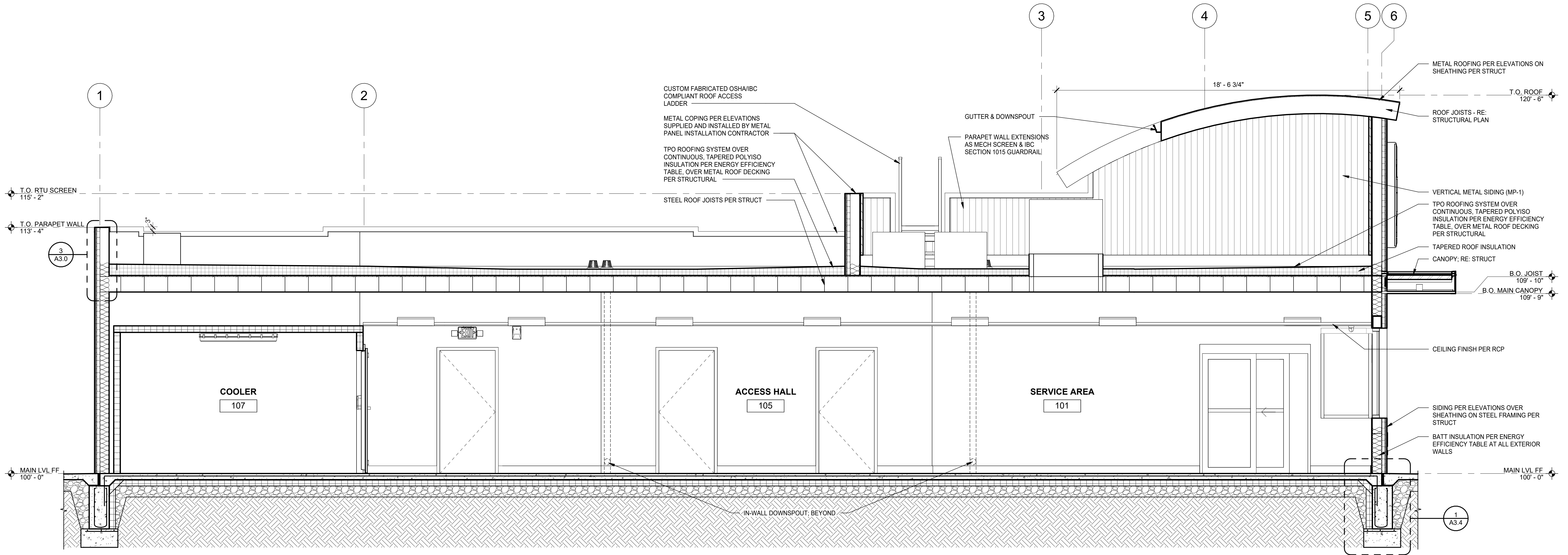
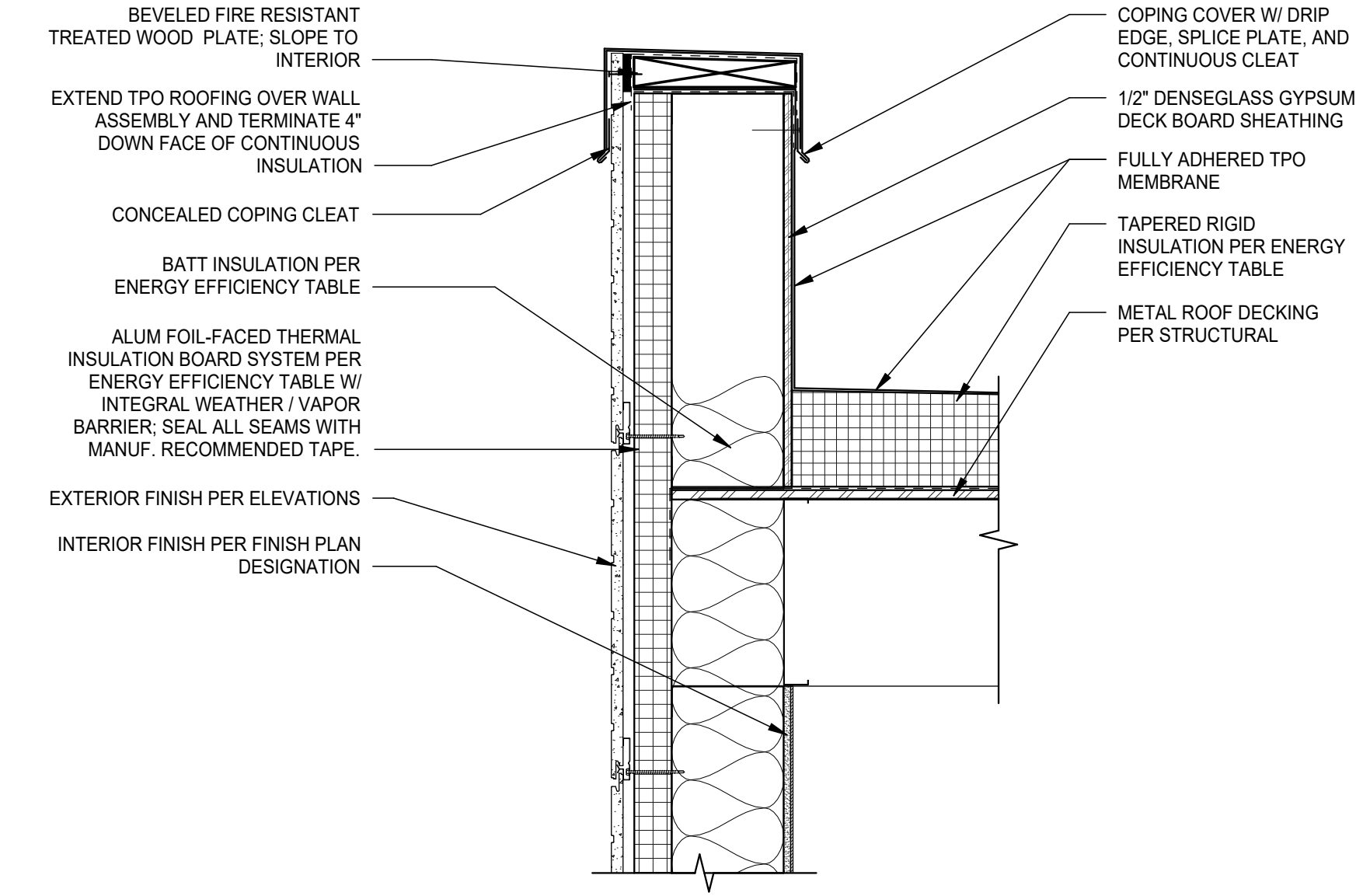
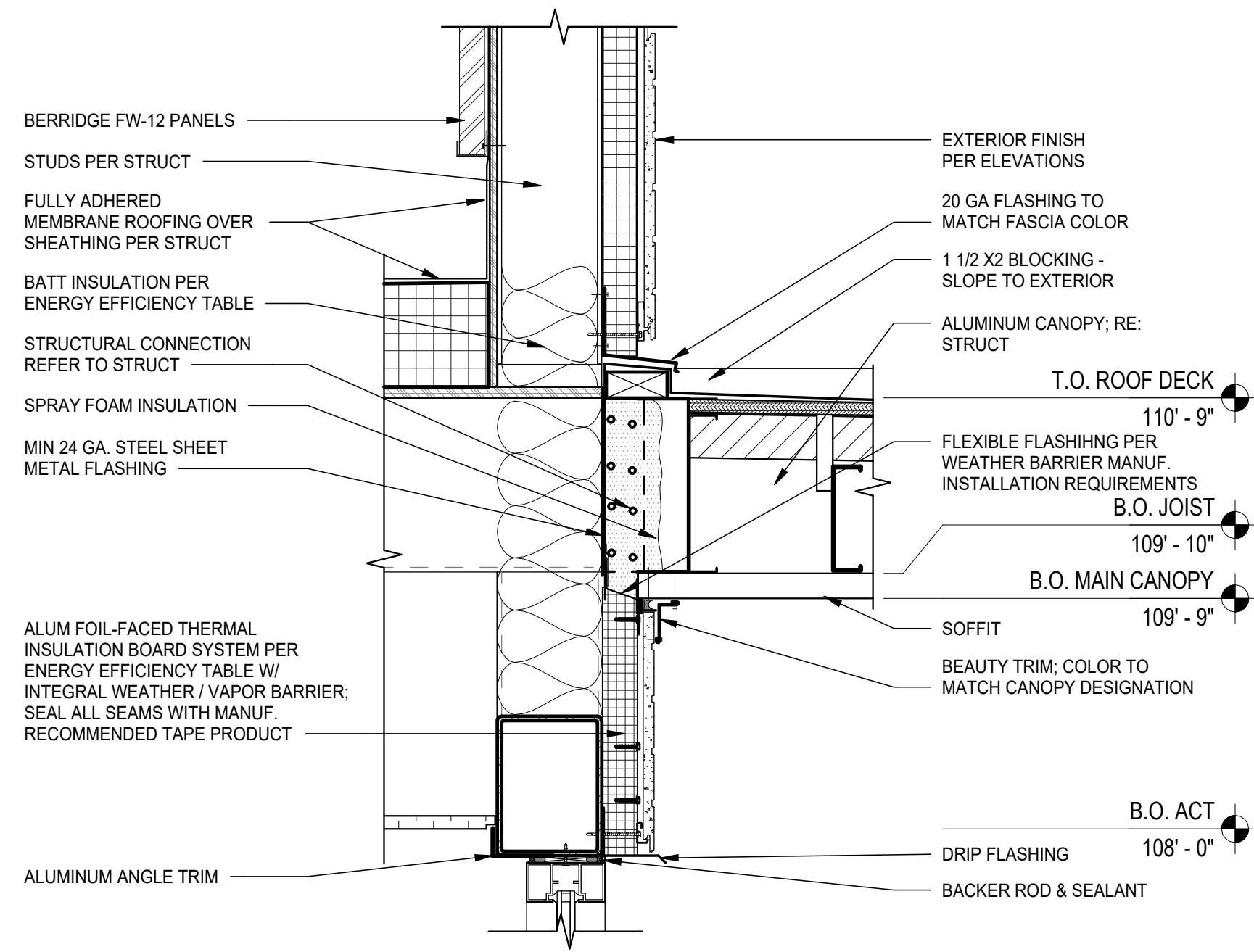
No.	Description	Date

sheet issue date:  
4/13/26

project no.:  
23.43.61

sheet contents:  
BUILDING SECTION

sheet no.:  
A3.0



4/13/2026 4:57:10 PM C:\Users\sam\Documents\23.43.61\_Homewood IL- Halsted\_Entitlement\_R24\_sam6QWCY.rvt 7 Brew Template V2.0 This drawing is an instrument of service and, as such, shall remain the property of Veritas Architecture and Design LLC. Unauthorised use or reproduction without permission is prohibited. This document is for use in connection with the specified project and shall not be used for other locations. © 2023