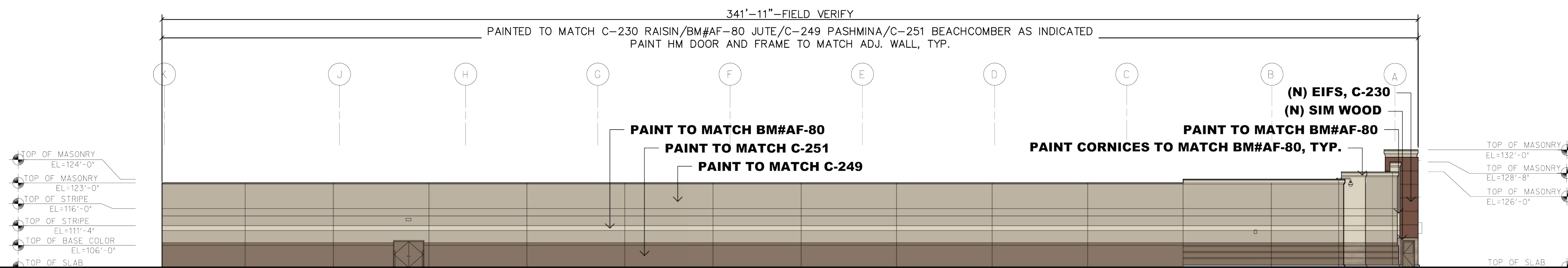
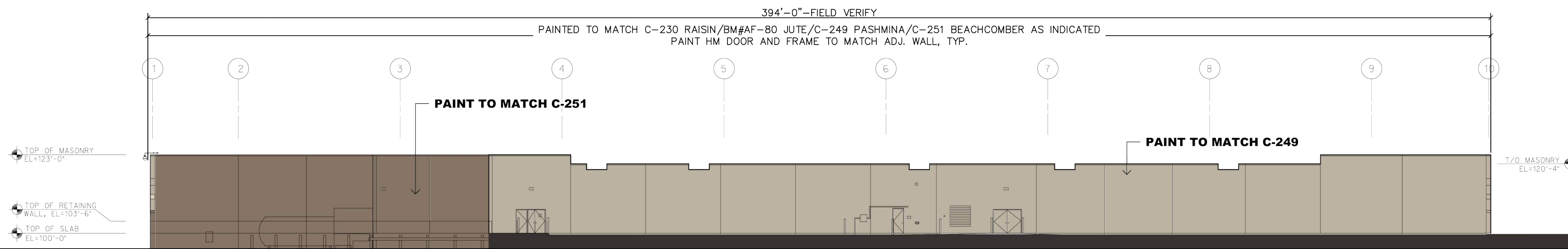


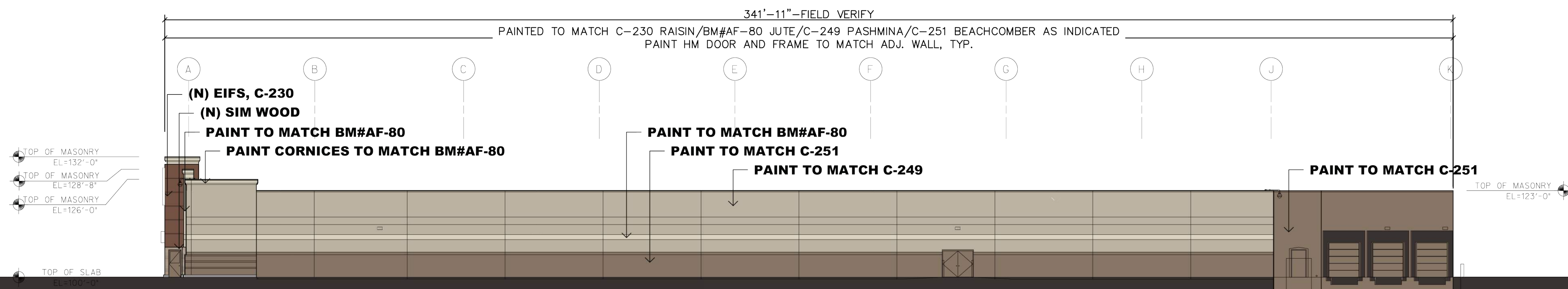
West Elevation



North Elevation



East Elevation



South Elevation

COLOR KEY:

- (BM#AF-80) JUTE
- C-249 (BM #AF-100) PASHMINA
- C-251 (BM #0993) BEACHCOMBER
- C-230 (BM#1237) RAISIN
- SIMULATED WOOD: NICHIIHA ROUGHSAWN PANEL "SMOKE" COLOR.

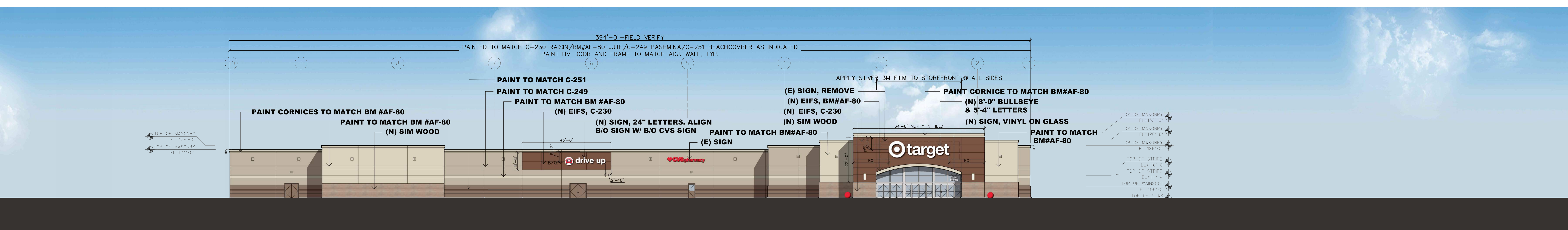
NOTE:

- *STORE EXTERIOR WALLS ARE PRIMARILY CMU
- *EXISTING SPHERICAL BOLLARDS REPAINT C-1 RED U.N.O.
- *NEW LIGHT FIXTURES: OCL "NEWPORT" @ EXSTG. SCONCES LOCATIONS
- *BEN-2 : MODERN, COLOR.....SILVER

GENERAL NOTE

- * AREA TO BE PAINTED STARTS AT TOP OF CURB OR REVEAL AND CONTINUES TO TOP OF PARAPET/FLASHING OR REVEAL. PAINT COLOR AND FINISH TRANSITIONS OCCUR AT EXISTING VERTICAL CONTROL JOINTS OR AT INSIDE BUILDING CORNERS, U.N.O.
- * ALL EXISTING WALL-MOUNTED ITEMS TO BE PAINTED TO MATCH ADJ. WALL SURFACE, U.N.O.
- * PATCH ALL VISIBLE HOLES FROM MOUNTING OF REMOVED SIGNS WITH LIKE MATERIALS. RESTORE WALL SURFACE TO 'LIKE NEW' APPEARANCE.
- *SILVER 3M FILM APPLIED TO METAL TRIM AT STOREFRONT ENTRANCE (NO WINDOWS)





BENJAMIN MOORE #AF-80 JUTE



C-230 RAISIN
BENJAMIN MOORE #1237



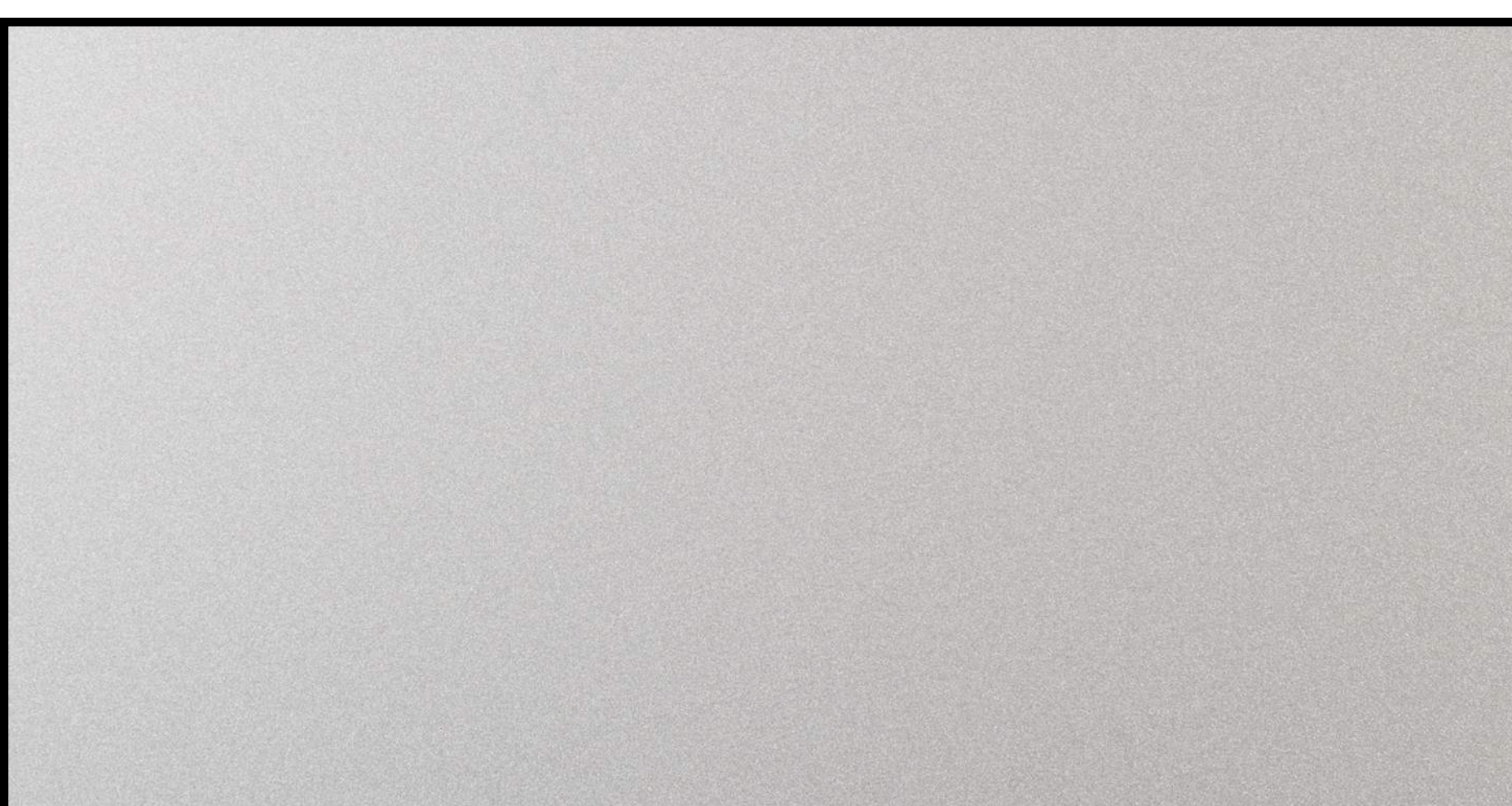
C-249 PASHMINA
BENJAMIN MOORE #AF-100



NICHIHA FIBER-CEMENT. ROUGHSAWN
PANEL, "SMOKE" FINISH.



C-251 BEACHCOMBER
BENJAMIN MOORE #0993



3M STOREFRONT FILM -SILVER COLOR



OCL "NEWPORT" SCONCE. 36" HEIGHT,
SILVER METALLIC FINISH. COLOR TEMP
2700K

