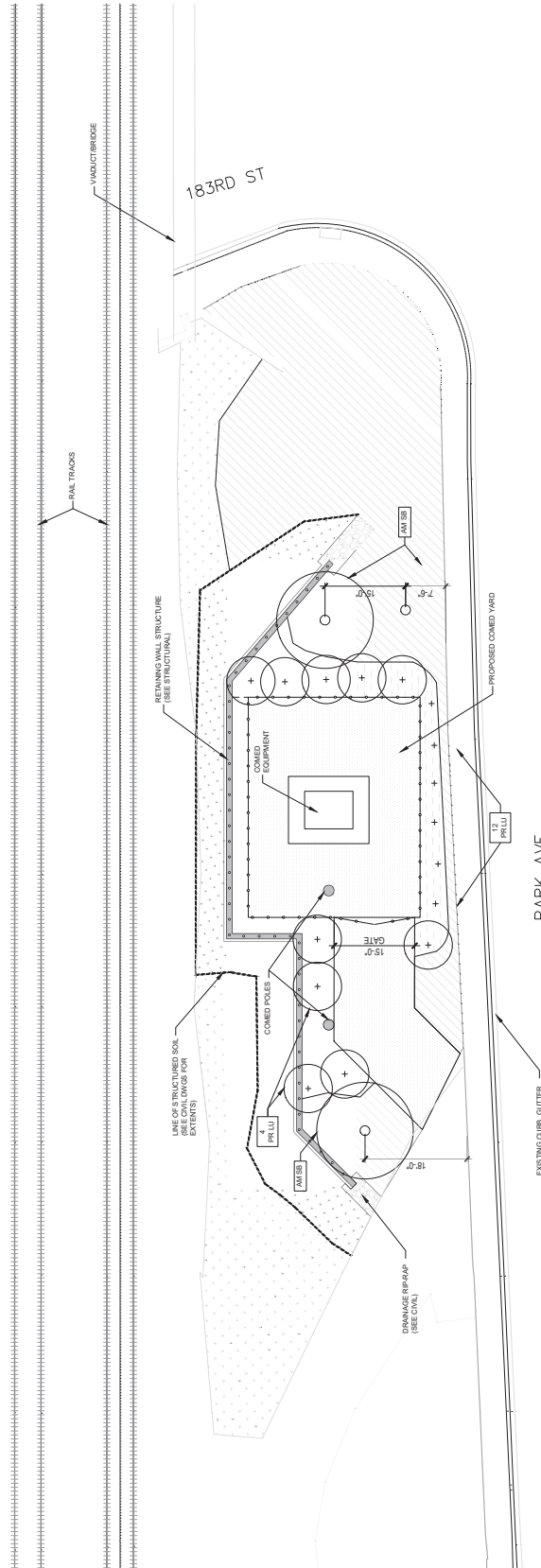


SITE PLAN I COMED LANDSCAPE PLAN



PLANTING NOTES:

1. PROVIDE PLANT SAMPLES OR PHOTOGRAPHS OF EACH PLANT SPECIFIED TO THE LANDSCAPE ARCHITECT FOR COMPLIANCE REVIEW PRIOR TO INSTALLATION.
2. PROTECT PLANT MATERIAL DURING DELIVERY TO PREVENT DAMAGE TO ROOT BALLS, TRUNKS, BRANCHES AND THE DISSECTION OF LEAVES. PROTECT PLANT MATERIAL DURING SHIPPING WITH SHADE CLOTH OR SHIP WITH ENCLOSED TRANSPORT. MAINTAIN PROTECTIONS AND HEALTH OF PLANT MATERIAL STORED ON SITE. HANDLE TREES WITH NYLON STRAPS, NO CHAINS OR CABLES WILL BE ALLOWED. REMOVE UNACCEPTABLE PLANT MATERIAL IMMEDIATELY FROM THE SITE.
3. VERIFY PLANTING PRODUCTS, PLANT MATERIAL, AND PLANT QUANTITIES DELIVERED TO THE SITE MATCH WHAT IS INDICATED ON THE PLANS AND SPECIFICATIONS.
4. STAKE BED LINES AND TREE LOCATIONS FOR THE DESIGNATED REPRESENTATIVE REVIEW PRIOR TO PLANTING. THE DESIGNATED REPRESENTATIVE SHALL CORRECT ANY DEFICIENCIES FOUND AT NO ADDITIONAL COST TO THE OWNER.
5. REFER TO VILLAGE STANDARDS FOR SIMILAR PLANTING REQUIREMENTS, INCLUDING MINIMUM SIZE AND WIDTH OF PLANTING PITS AND BEDS, GUYING AND STAKING, MULCHING, AND OTHER PLANTING REQUIREMENTS.
6. ROOT BALLS SHALL CONFORM TO THE SIZE STANDARDS SET FORTH IN "AMERICAN STANDARDS FOR NURSERY STOCK"
7. PLANT MATERIAL DELIVERED TO THE SITE IS SUBJECT TO THE REVIEW OF THE DESIGNATED REPRESENTATIVE BEFORE, DURING AND AFTER INSTALLATION. PLANTING TO ASSURE PROPER SOIL PERCOLATION PITS WHICH DO NOT ADEQUATELY DRAIN SHALL BE FURTHER SCARIFIED ALONG OUTER EDGES AND SIDES OF PIT. DO NOT DISTURB AREA SUPPORTING TREE BALL. REPEAT TEST. ALLOWANCES WILL NOT BE MADE FOR PLANT MATERIAL LOSS DUE TO IMPROPER DRAINAGE.
8. REMOVE PLANTING AND LANDSCAPE DEBRIS FROM THE PROJECT SITE AND SWEEP AND WASH CLEAN PAVED AND FINISHED SURFACES AFFECTED BY THE LANDSCAPE INSTALLATION.
9. PLANTING AREAS SHALL BE WEED FREE PRIOR TO PLANTING INSTALLATION AND MAINTAINED WEED FREE THROUGH FINAL ACCEPTANCE.

PLAN LEGEND

- GRASS (SOD) (SEE SCHEDULE THIS SHEET)
- GROUND COVER PLANTED IN MULCH BED (SEE SCHEDULE THIS SHEET)
- MULCH (SEE SCHEDULE THIS SHEET)
- GRAVEL, ACCESS ROAD & EQUIPMENT YARD (SEE CIVIL)
- RETAINING WALL (SEE STRUCTURAL)
- CHAIN LINK FENCE (SEE CIVIL)

PLANT SCHEDULE						
KEY	COMMON NAME	SCIENTIFIC NAME	SIZE	QUANTITY	SPACING	NOTES
PR LU	SNP LAUREL	SPERMATOPHYTES	48" TALL	16	AS SHOWN	PLANTED IN MULCH BED
AM SB	SERVICE BERRY	AMELANCHIER	9" CALIPER	3	-	STAKED SCREWDRIVER WIRES SLOW-RELEASE WATER BAGS
JU HO	CREEPING JUNIPER	JUNIPERUS HORIZONTALIS	GROWING COVER (LOCAL POTS)	-	18" EACH WAY	PLANTED IN MULCH BED (BEST TOTAL FIT)

MATERIAL SCHEDULE		
ITEM	KEY	AREA
GRASS (SOD)	SOD	2970 sq ft
MULCH	MU	3860 sq ft

