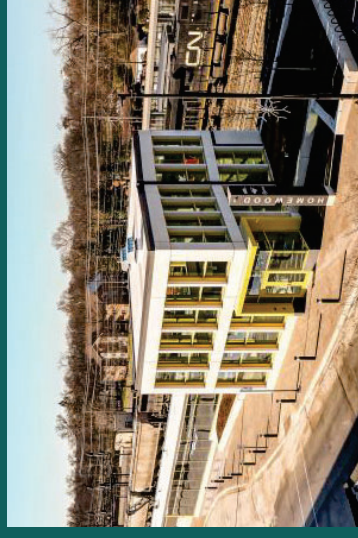


MODERN MINIMALISM

- ACCENTUATED ENTRANCE THAT CREATES HUMAN-SCALE ELEMENTS ALONG THE STREET
- UNIFIED DESIGN LANGUAGE CONSISTENT WITH THE NORTH METRA STATION ON HARWOOD AVE.



VIEW FROM NORTHWEST



VIEW FROM SOUTHWEST



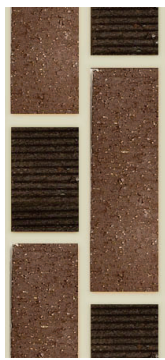
VIEW FROM NORTHEAST



MATERIALITY



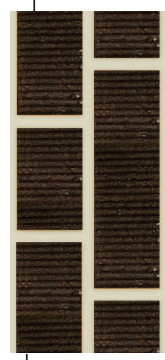
CEDAR RIDGE+ QUEENSTOWN VERTEX



**FLEMISH BOND
ACCENTUATED WITH
QUEENSTOWN VERTEX**

LED LIGHT BETWEEN BRICKS

QUEENSTOWN VERTEX



**FLEMISH BOND COLOR
MATCHED WITH CN TOWER
BRICK**

SUMMER YELLOW

**ALUMINUM COMPOSITE PANEL
MATCHED WITH HARWOOD AVE.
STATION**

CAST STONE

**MATCHES WITH HARWOOD AVE.
STATION**



RENDERINGS

