



Site Name: RC1461 Homewood, IL

Site ID: RC1461

Street Address: 17601 Halsted St

City, State Zipcode: Homewood, IL

Date: 01-12-2026

Revision Number: R-01

## Comprehensive Sign Program

TABLE OF CONTENTS

Cover Page

Site Overview

Site Plan

Elevations

Code Check

Product Description

01 23SF Monument @ 6' OAH

02 5'x10' Wall Sign

03 4'x8' Wall Sign

04 4'x8' Wall Sign

05 4'x8' Wall Sign

06 PMRL (Mural)

07 Red Dog on Substrate

08 20" "ONE LOVE" Channel Letters Canopy M

09 Menu Board with Awning

10 Menu Board with Awning

11 Pre-Sell Board

12 Drive-Thru Speaker Post

13 Drive-Thru Speaker Post

19 1'-2" x 2-3' "OPEN" Neon Window Sign

PG. 01

PG. 02

PG. 03

PG. 4-5

PG. 6-7

PG. 08

PG. 09

PG. 10

PG. 11

PG. 12

PG. 13

PG. 14

PG. 15

PG. 16

PG. 17

PG. 18

PG. 19

PG. 20

PG. 26

SITE OVERVIEW

Site ID: RC1461

Site Name: RC1461 Homewood, IL

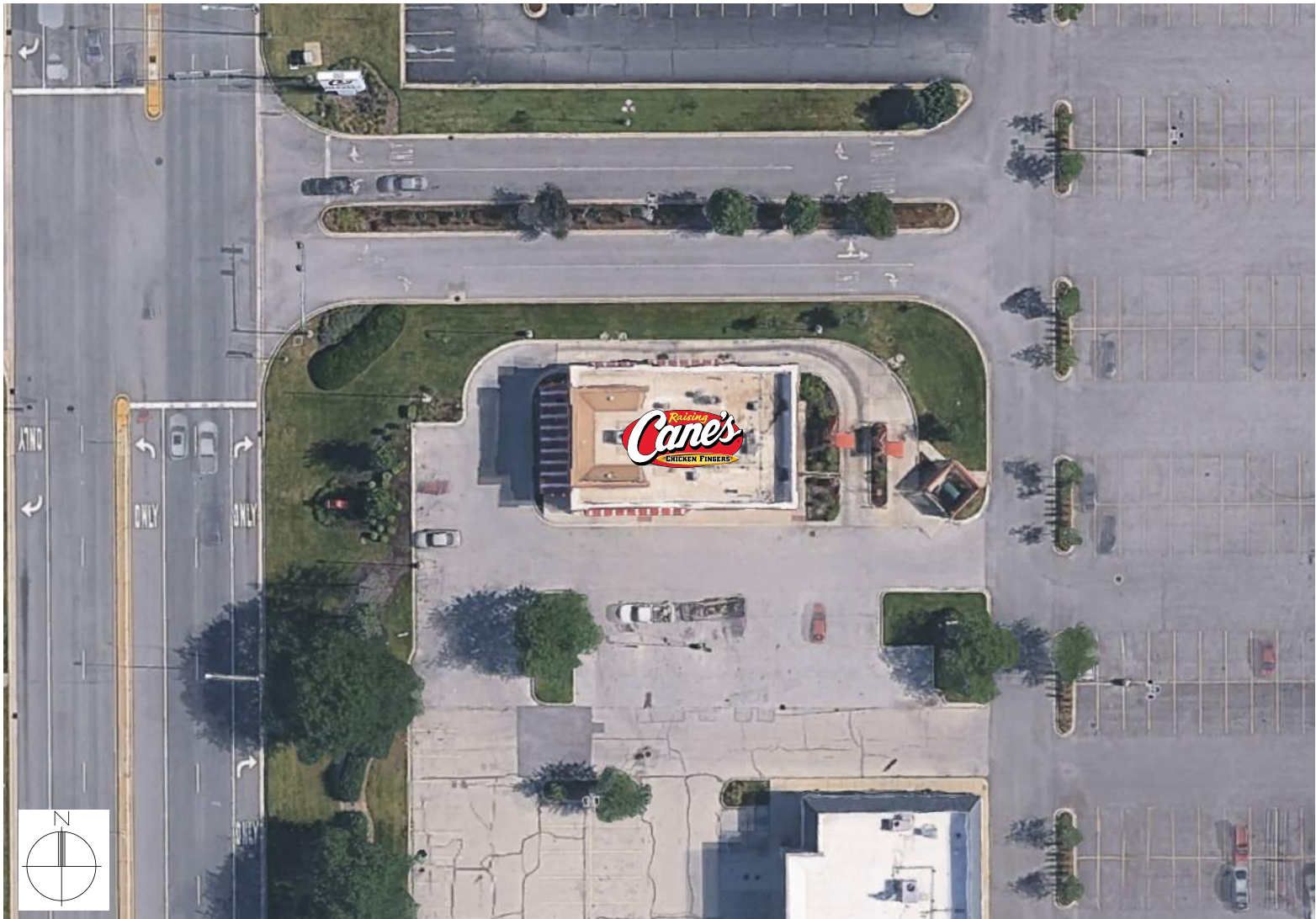
Street Address: 17601 Halsted St

City, State Zipcode: Homewood, IL

Creation Date: 10-23-2025

PM: Corey Johnson

CAM: Christopher Russell



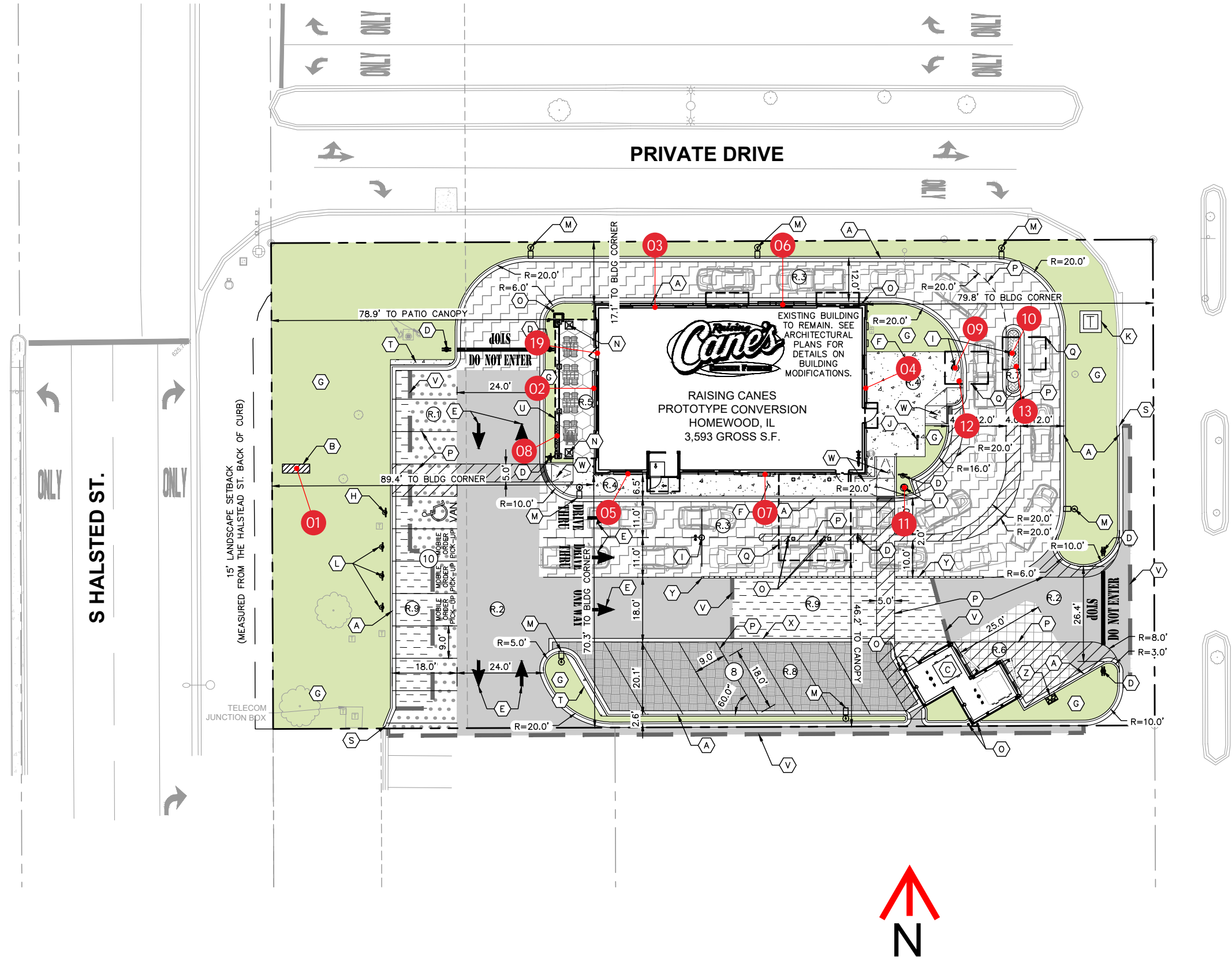
DOCUMENT NAVIGATION

- CLICKING THIS ICON (LOCATED ON EVERY PAGE NEAR IN THE FOOTER) WILL LINK TO SITE PLAN.
- 01

CLICKING THE NUMBER ICON (LOCATED ON EVERY SIGN LIST) WILL LINK TO THE CUTSHEET PAGE OF THAT SIGN.



SITEPLAN



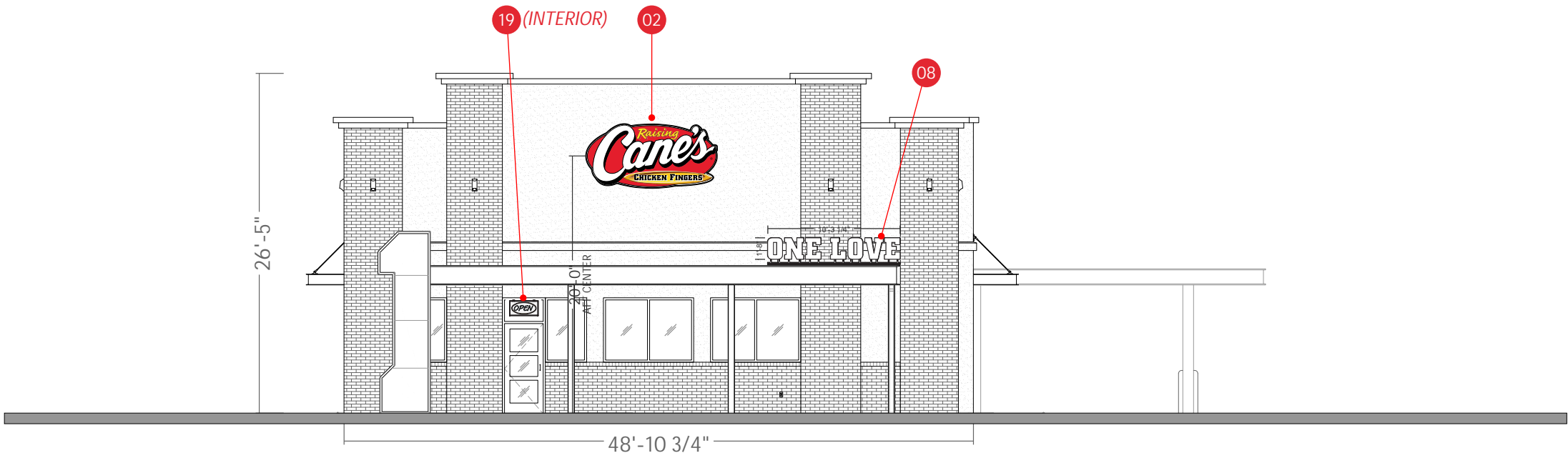
SITE KEY

PART #	DESCRIPTION
01	RAI-M-20-AP-6 23SF Monument @ 6' OAH
02	RAI-WS-10FT 5'x10' Wall Sign
03	RAI-WS-8FT 4'x8' Wall Sign
04	RAI-WS-8FT 4'x8' Wall Sign
05	RAI-WS-8FT 4'x8' Wall Sign
06	RC-PMRL-9 PMRL (Mural)
07	RAI-RD-1 Red Dog on Substrate
08	RAI-OL-RW-20 20" "ONE LOVE" Channel Letters Canopy Mounted
09	RAI-MA03 Menu Board with Awning
10	RAI-MA03 Menu Board with Awning
11	RAI-DTPS Pre-Sell Board
12	RAI-DTSP Drive-Thru Speaker Post
13	RAI-DTSP Drive-Thru Speaker Post
19	RAI-NEON-OPEN 1'-2" x 2'-3" "OPEN" Neon Window Sign

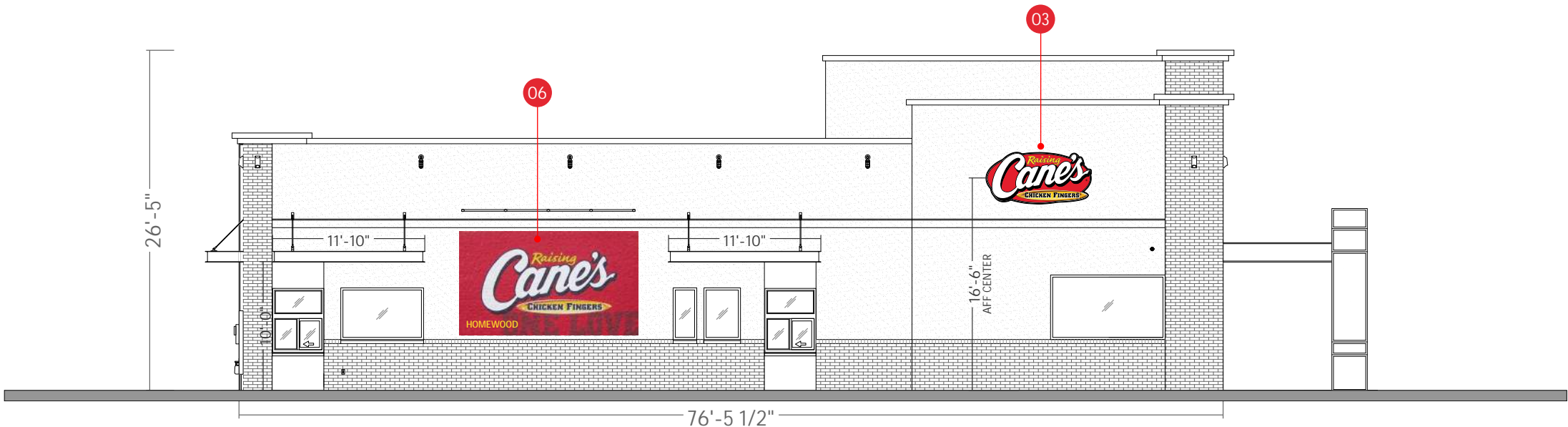




ELEVATIONS



FRONT ELEVATION



DRIVE THRU ELEVATION

SITE KEY

PART #	DESCRIPTION
01	RAI-M-20-AP-6 23SF Monument @ 6' OAH
02	RAI-WS-10FT 5'x10' Wall Sign
03	RAI-WS-8FT 4'x8' Wall Sign
04	RAI-WS-8FT 4'x8' Wall Sign
05	RAI-WS-8FT 4'x8' Wall Sign
06	RC-PMRL-9 PMRL (Mural)
07	RAI-RD-1 Red Dog on Substrate
08	RAI-OL-RW-20 20" "ONE LOVE" Channel Letters Canopy Mounted
09	RAI-MA03 Menu Board with Awning
10	RAI-MA03 Menu Board with Awning
11	RAI-DTPS Pre-Sell Board
12	RAI-DTSP Drive-Thru Speaker Post
13	RAI-DTSP Drive-Thru Speaker Post
19	RAI-NEON-OPEN 1'-2" x 2-3' "OPEN" Neon Window Sign

Scale: 3/32"=1'

ARTISTIC REPRESENTATION ONLY.

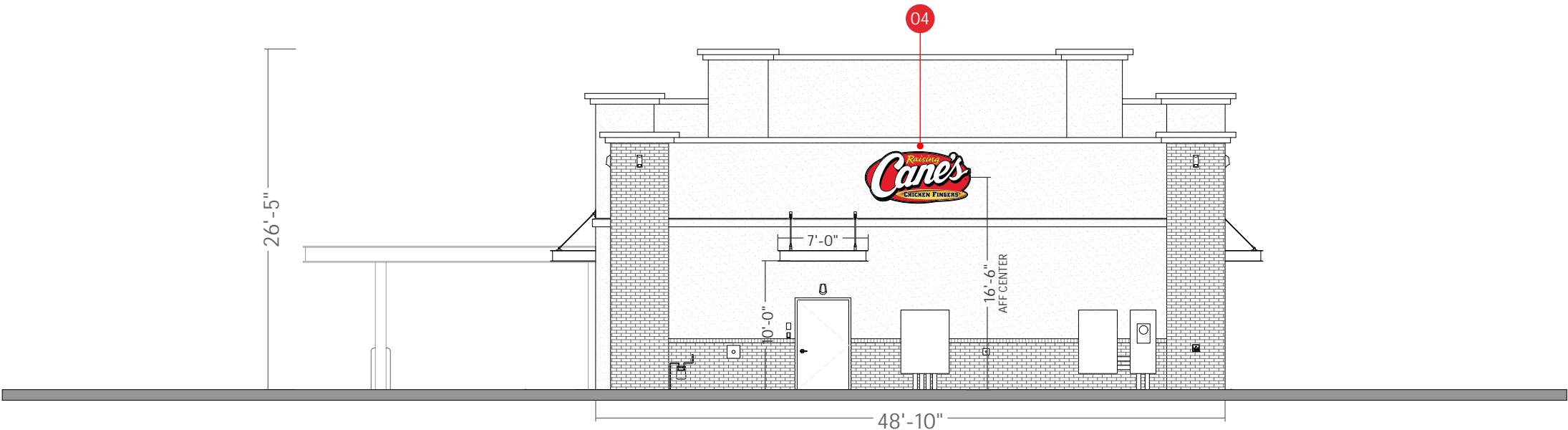
PAGE



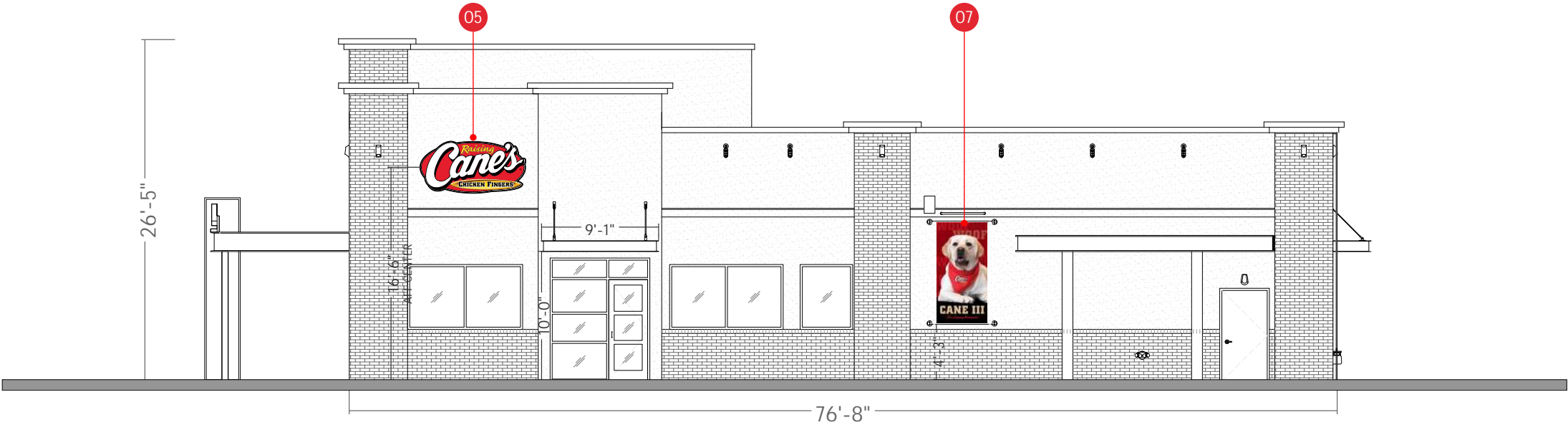
This document is the sole property of AGI, and all design, manufacturing, reproduction, use and sale rights regarding the same are expressly forbidden. It is submitted under a confidential relationship, for a special purpose, and the recipient, by accepting this document assumes custody and agrees that this document will not be copied or reproduced in whole or in part, nor its contents revealed in any manner or to any person except for the purpose for which it was tendered, not any special features peculiar to this design be incorporated in other projects.



ELEVATIONS



REAR ELEVATION



SIDE ENTRY ELEVATION

SITE KEY		
PART #	DESCRIPTION	
01	RAI-M-20-AP-6	23SF Monument @ 6' OAH
02	RAI-WS-10FT	5'x10' Wall Sign
03	RAI-WS-8FT	4'x8' Wall Sign
04	RAI-WS-8FT	4'x8' Wall Sign
05	RAI-WS-8FT	4'x8' Wall Sign
06	RC-PMRL-9	PMRL (Mural)
07	RAI-RD-1	Red Dog on Substrate
08	RAI-OL-RW-20	20" "ONE LOVE" Channel Letters Canopy Mounted
09	RAI-MA03	Menu Board with Awning
10	RAI-MA03	Menu Board with Awning
11	RAI-DTPS	Pre-Sell Board
12	RAI-DTSP	Drive-Thru Speaker Post
13	RAI-DTSP	Drive-Thru Speaker Post
19	RAI-NEON-OPEN	1'-2" x 2-3' "OPEN" Neon Window Sign

Scale: 3/32"=1'

ARTISTIC REPRESENTATION ONLY.

PAGE



This document is the sole property of AGI, and all design, manufacturing, reproduction, use and sale rights regarding the same are expressly forbidden. It is submitted under a confidential relationship, for a special purpose, and the recipient, by accepting this document assumes custody and agrees that this document will not be copied or reproduced in whole or in part, nor its contents revealed in any manner or to any person except for the purpose for which it was tendered, not any special features peculiar to this design be incorporated in other projects.



DESCRIPTION

23SF Monument @ 6' OAH with address numbers

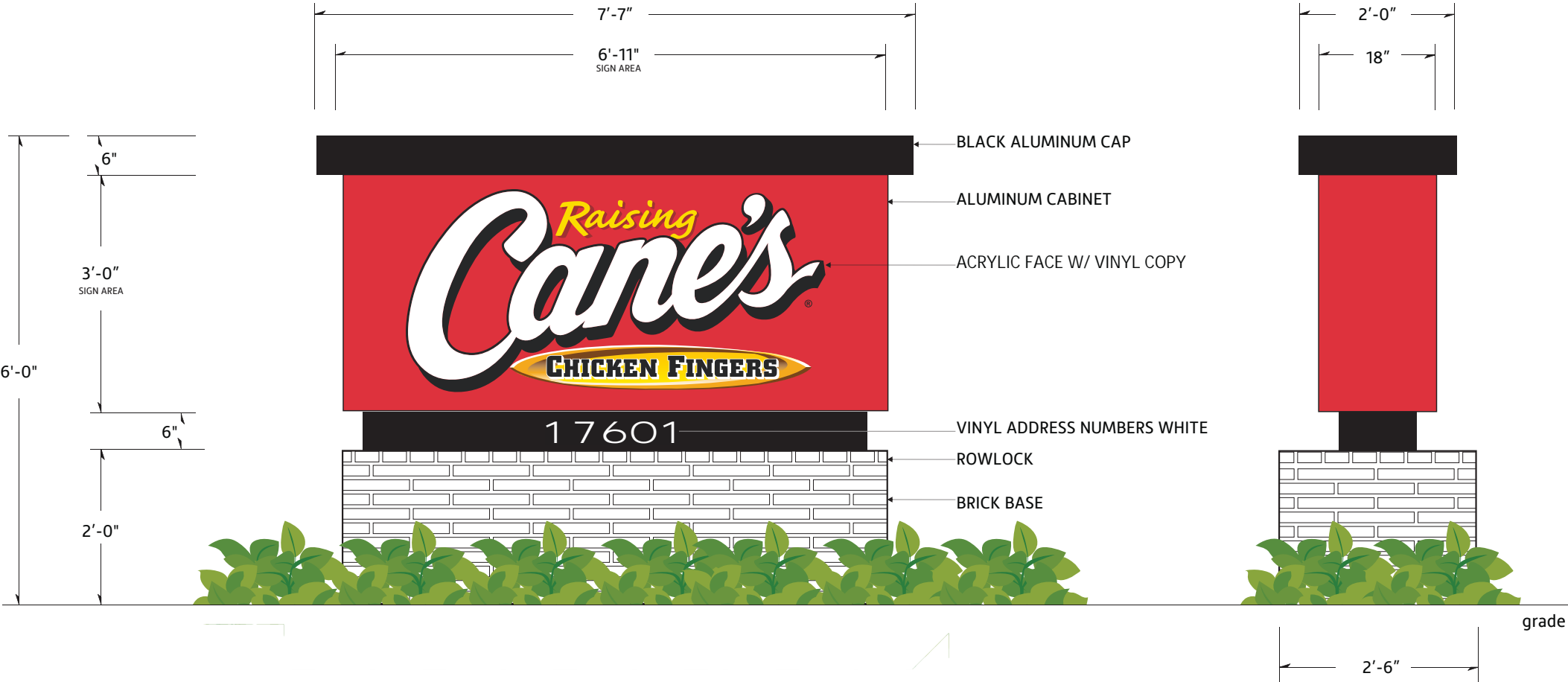
Example of an authorized painted mural

SPECIFICATIONS

- SIGN H: 3'-0"
- SIGN W: 6'-11"
- OAH: 6'-0"
- OAW: 7'-7"
- SIGN SF: 22.75 SF
- TOTAL SF:
- ILLUMINATION: Internal
- AMPS:

CSP Guidelines

The tenant is allowed one double sided 45.5 SF monument sign that includes a 2' high brick base and a max overall height of 6'. The monument sign must be internally illuminated and meet all city guidelines for electrical and illumination standards. The monument must display vinyl address numbers on both side and must be at least 5.5" high. The monument sign is allowed on the eastern frontage of the site and must follow all city guidelines for setbacks and building and electrical codes.



COLOR SCHEDULE			
PAINT COLORS		VINYL COLORS	
	MAP / 27386		3M / OPAQUE / #7725-10 / 'WHITE'
	PANTONE / #109C / 'YELLOW'		3M/ OPAQUE / #680-10 / 'WHITE' / REFLECTIVE
	MAP / 2075		3M / TRANS./ #3630-015 / 'YELLOW'
	MAP / 'BLACK'		3M / TRANS./ #3630-53 / 'CARDINAL RED'
	MAP/ 'BLACK' / FINISH MATTE		3M / TRANS./ #3630-73 / 'RED'
	MAP/ 'BLACK' / FINISH SATIN		3M / OPAQUE / 'BLACK'



DESCRIPTION

4'-9 11/16" x 10'-0" Internally Illuminated Single-Face Wall Sign With Thermoformed Polycarbonate Face With Applied Vinyl Graphics

Example of an authorized painted mural

SPECIFICATIONS

SIGN H:

SIGN W:

OAH:

OAW:

SIGN SF:

TOTAL SF:

ILLUMINATION:

AMPS:

4'-9 11/16"

10'-0"

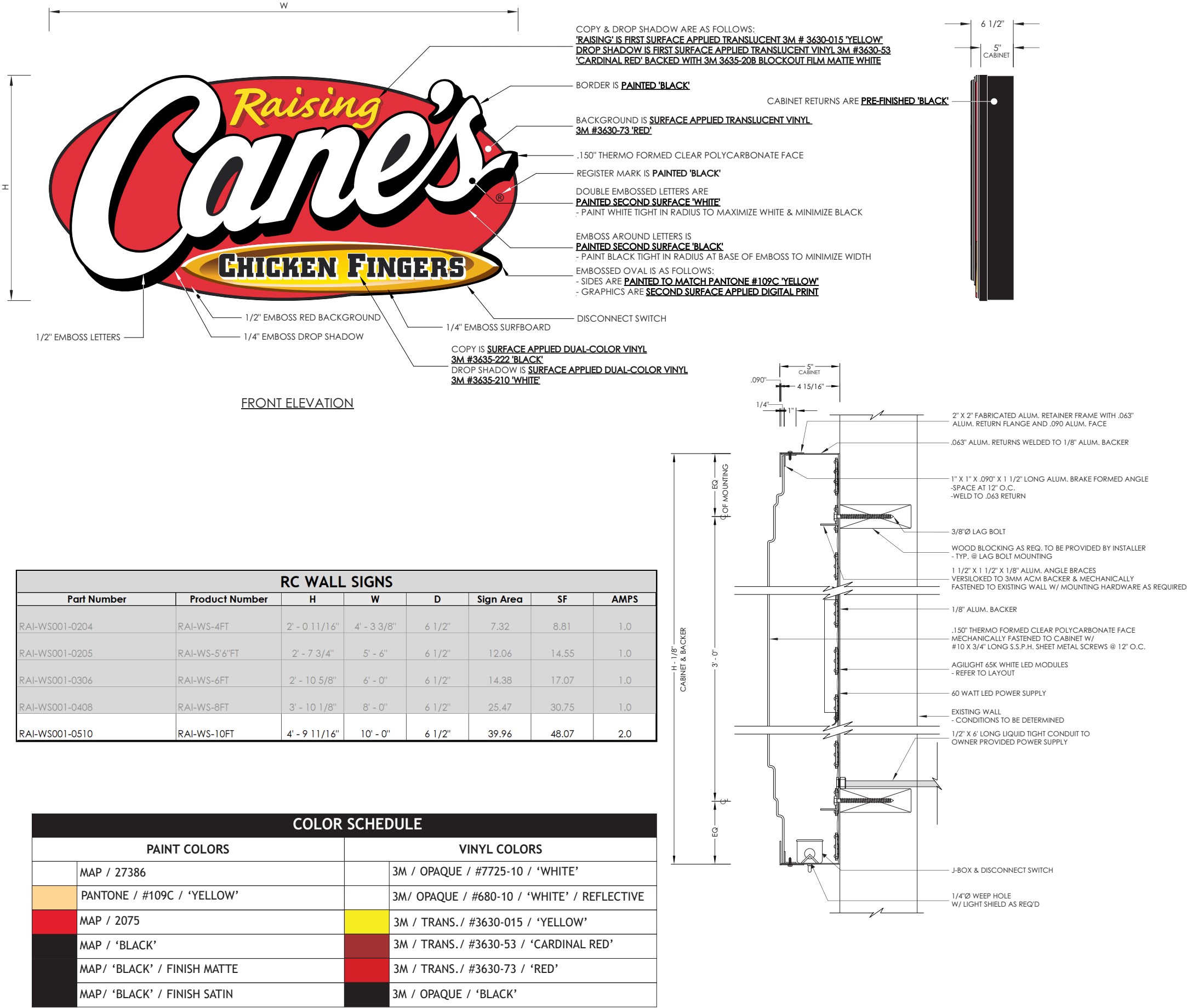
48.07

Internal

2.0 @ 120 Volts Connected Load

CSP Guidelines

Wall signage shall be regulated by elevation with an overall maximum square footage of 130 SF and a maximum quantity of 6 wall signs. Wall sign designs may include cabinets, channel letters, projecting signs and may be mounted to walls or canopies. A maximum of two wall signs can be installed per building elevation. Internal illumination is preferred but an exception can be made for external or halo illumination if required due to site conditions, brand design requirements, or safety concerns.





- 03
- 04
- 05
- RAI-WS-8FT
- 4'x8' Wall Sign

DESCRIPTION

3' - 10 1/8" x 8' - 0" Internally Illuminated Single-Face Wall Sign With Thermoformed Polycarbonate Face With Applied Vinyl Graphics

Example of an authorized painted mural

SPECIFICATIONS

SIGN H:

SIGN W:

OAH:

OAW:

SIGN SF:

TOTAL SF:

ILLUMINATION:

AMPS:

3'-10 1/8"

8'-0"

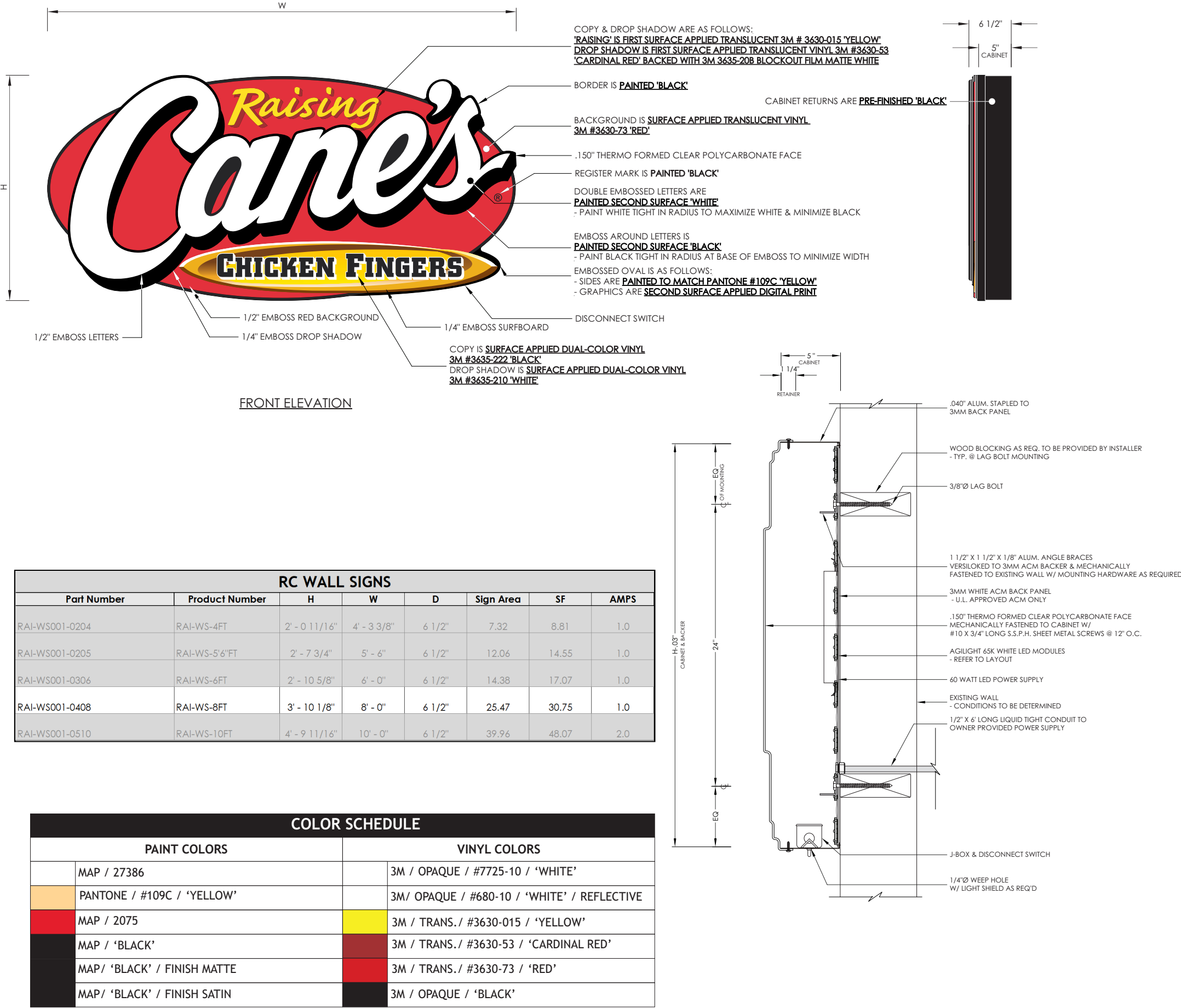
30.75

Internal

1.0 @ 120 Volts Connected Load

CSP Guidelines

Wall signage shall be regulated by elevation with an overall maximum square footage of 130 SF and a maximum quantity of 6 wall signs. Wall sign designs may include cabinets, channel letters, projecting signs and may be mounted to walls or canopies. A maximum of two wall signs can be installed per building elevation. Internal illumination is preferred but an exception can be made for external or halo illumination if required due to site conditions, brand design requirements, or safety concerns.





DESCRIPTION

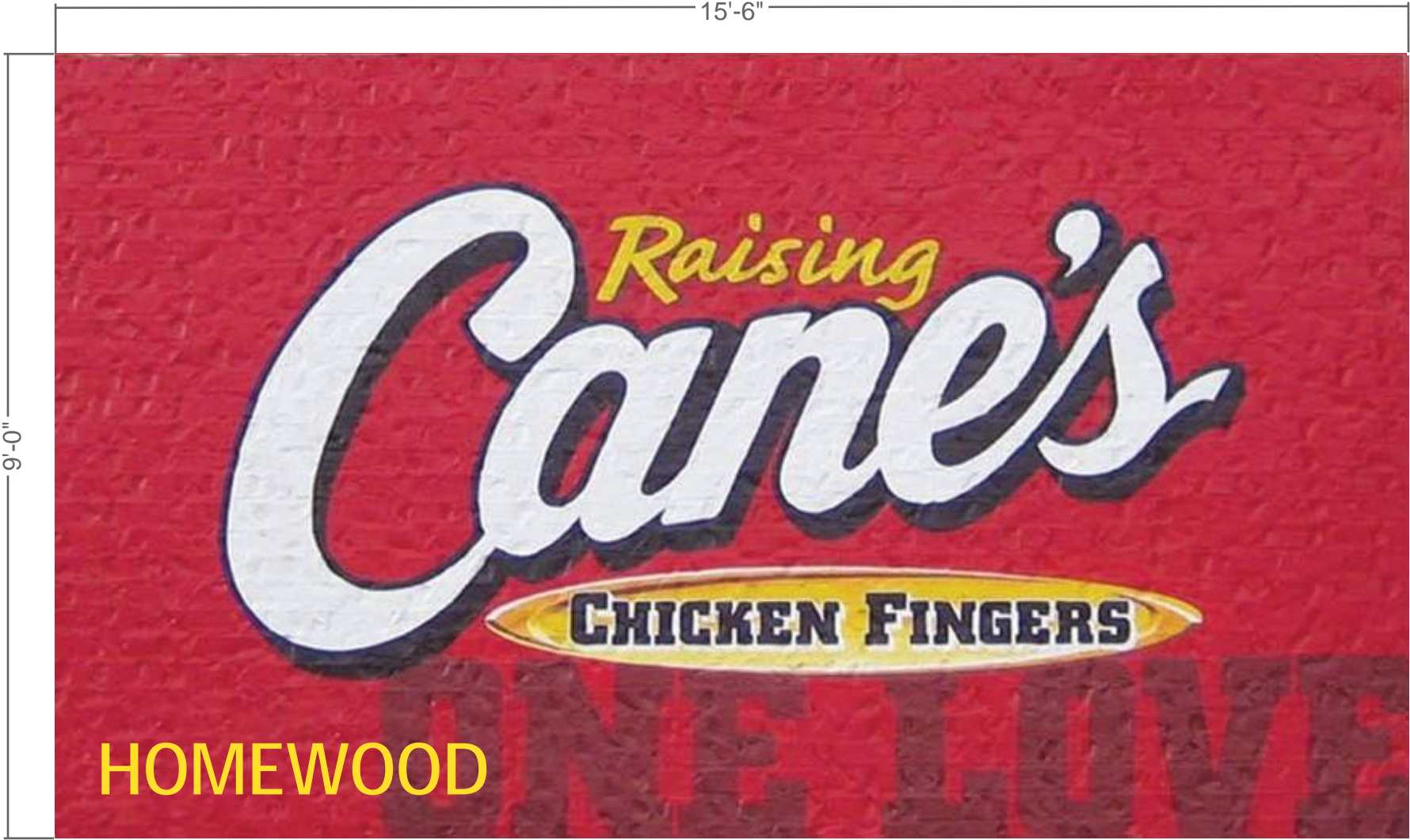
Painted Mural W/City Name  
Example of an authorized painted mural

SPECIFICATIONS

SIGN H:	9'-0"
SIGN W:	15'-6"
OAH:	
OAW:	
SIGN SF:	139.5
TOTAL SF:	
ILLUMINATION:	None
AMPS:	N/A

CSP Guidelines

The occupant is allowed one painted mural not to exceed 140 SF. The painted mural can contain commercial messaging and can go on any elevation.



COLOR SCHEDULE			
PAINT COLORS		VINYL COLORS	
	MAP / 27386		3M / OPAQUE / #7725-10 / 'WHITE'
	PANTONE / #109C / 'YELLOW'		3M/ OPAQUE / #680-10 / 'WHITE' / REFLECTIVE
	MAP / 2075		3M / TRANS./ #3630-015 / 'YELLOW'
	MAP / 'BLACK'		3M / TRANS./ #3630-53 / 'CARDINAL RED'
	MAP/ 'BLACK' / FINISH MATTE		3M / TRANS./ #3630-73 / 'RED'
	MAP/ 'BLACK' / FINISH SATIN		3M / OPAQUE / 'BLACK'





20" "ONE LOVE" Channel Letters Canopy Mounted

DESCRIPTION

20" "ONE LOVE" Channel Letters Canopy Mounted

Example of an authorized wall sign

SPECIFICATIONS

SIGN H:

SIGN W:

OAH:

OAW:

SIGN SF:

TOTAL SF:

ILLUMINATION:

AMPS:

1'-8"

10'-3 3/8"

2'-2"

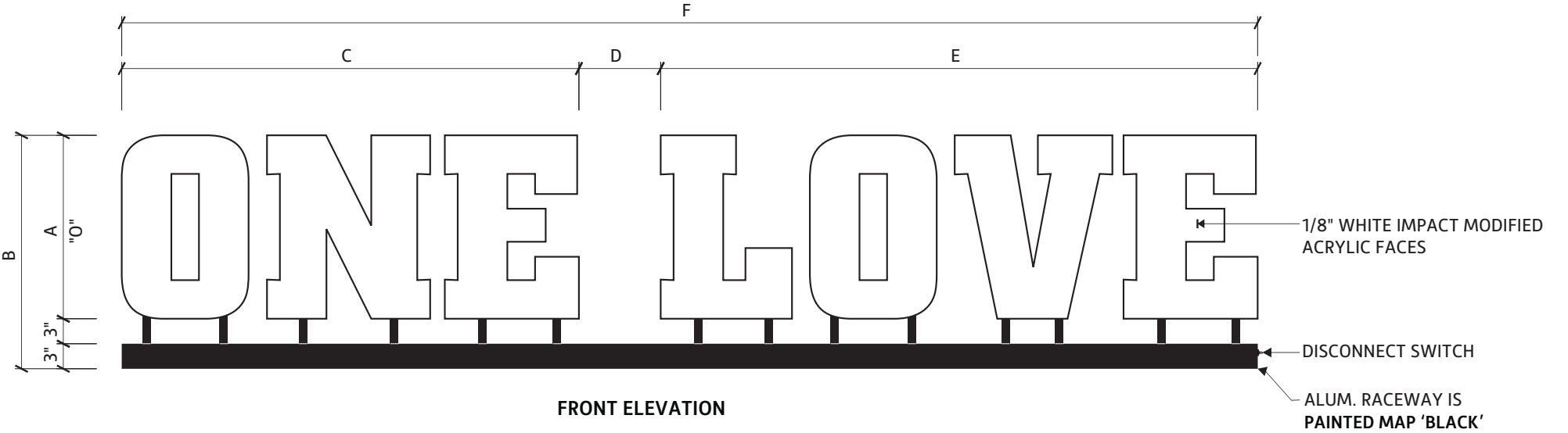
17.57 SF

INTERNAL

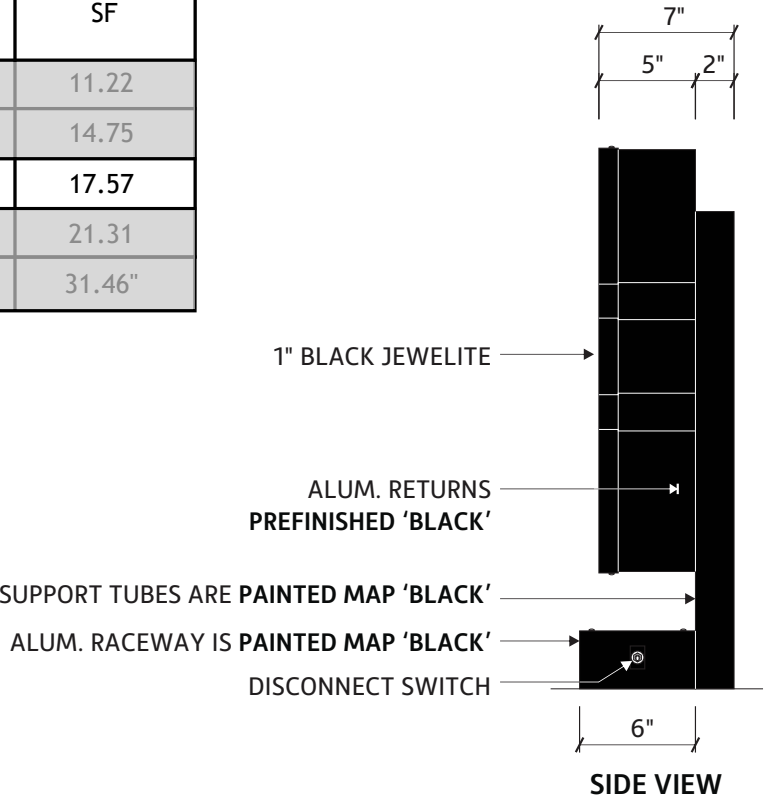
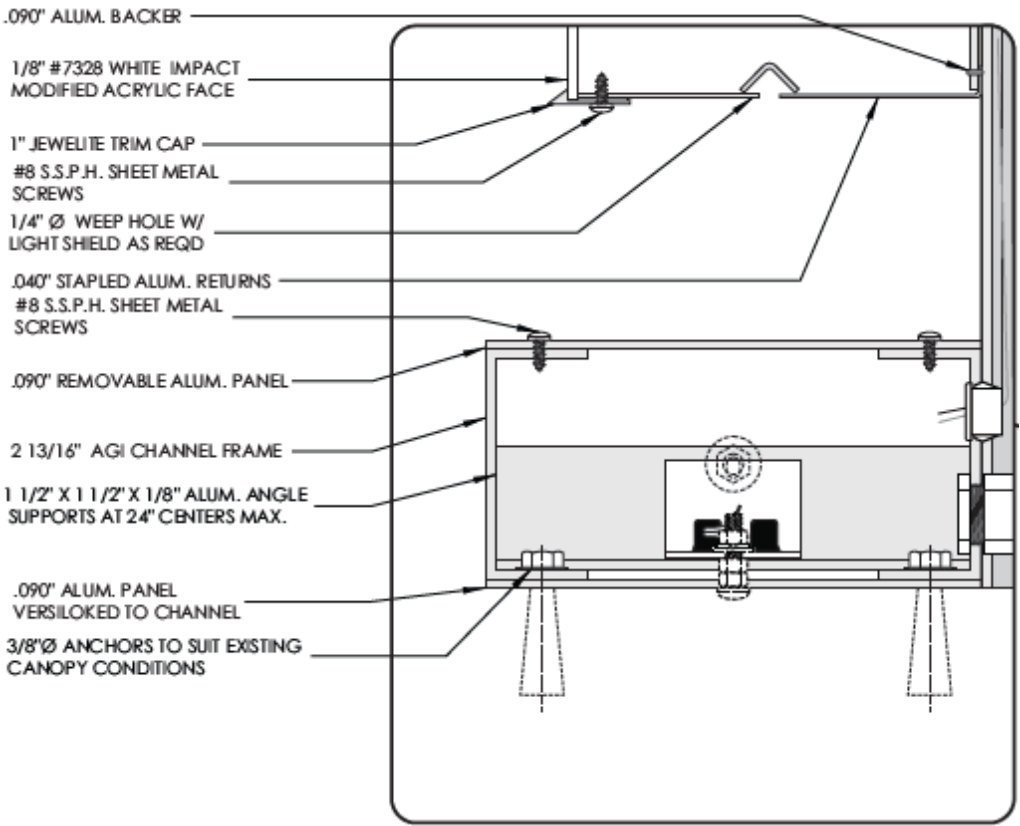
1.8 @ 120 Volts Connected Load

CSP GUIDELINES

Wall signage shall be regulated by elevation with an overall maximum square footage of 130 SF and a maximum quantity of 6 wall signs. Wall sign designs may include cabinets, channel letters, projecting signs and may be mounted to walls or canopies. A maximum of two wall signs can be installed per building elevation. Internal illumination is preferred but an exception can be made for external or halo illumination if required due to site conditions, brand design requirements, or safety concerns.



Sign Size	A	B	C	D	E	F	SF
OL-16	16"	1'-10 9/16"	3'-3 13/16"	7 1/8"	4'-4"	8'-3"	11.22
OL-18	18"	2'-0"	3'-8 13/16"	8"	4'-10 1/2"	9'-3 3/8"	14.75
OL-20	20"	2'-2"	4'-1 13/16"	8 15/16"	5'-5"	10'-3 3/8"	17.57
OL-22	22"	2'-4"	4'-6 3/4"	9 13/16"	5'-11 1/2"	11'-4 1/8"	21.31
OL-24	24"	2'-6 9/16"	4'-11 9/16"	10 15/16"	6'-5 13/16"	12'-4 1/4"	31.46"





Menu Board with Awning

DESCRIPTION

Internally Illuminated Drive-Thru Menu Board With Canopy

Example of an authorized drive-thru menu board

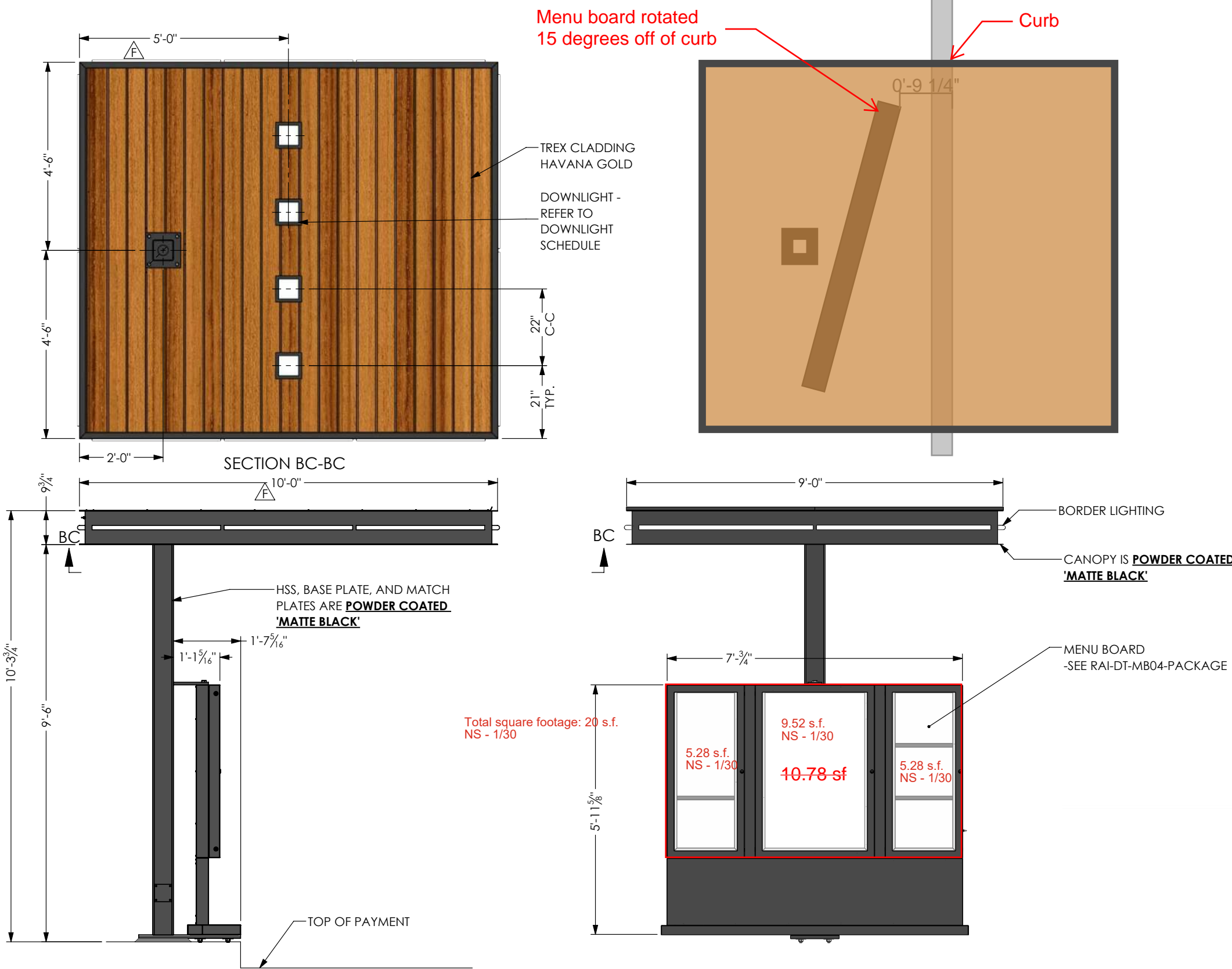
SPECIFICATIONS

SIGN H:	5'-11 5/8"
SIGN W:	7'-0 3/4"
OAH:	10'-3 3/4"
OAW:	9'-0"
SIGN SF:	29.25 SF
TOTAL SF:	
ILLUMINATION:	Internal
AMPS:	

20 s.f. per sign measurement standard  
NS - 1/30

CSP GUIDELINES

Occupants are allowed one pre-sell board, two menu boards and two speaker posts. The pre-sell board is allowed at 1.25 SF and 6' Overall height. The menu boards are allowed at 10.78 SF and 5' 11 5/8" high. Menu boards are also allowed an attached canopy not to exceed 10' 3 3/4" high. Speaker posts are allowed at 1.25 SF and 2' 6" overall height.





DESCRIPTION

Standard Pre-Sell Board

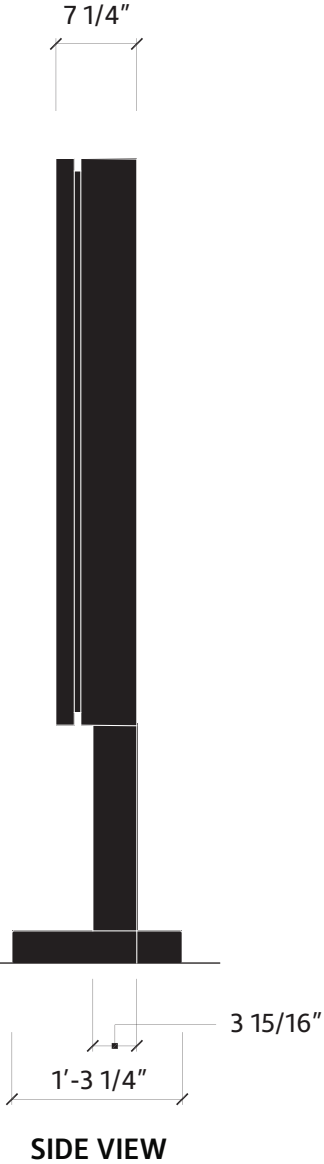
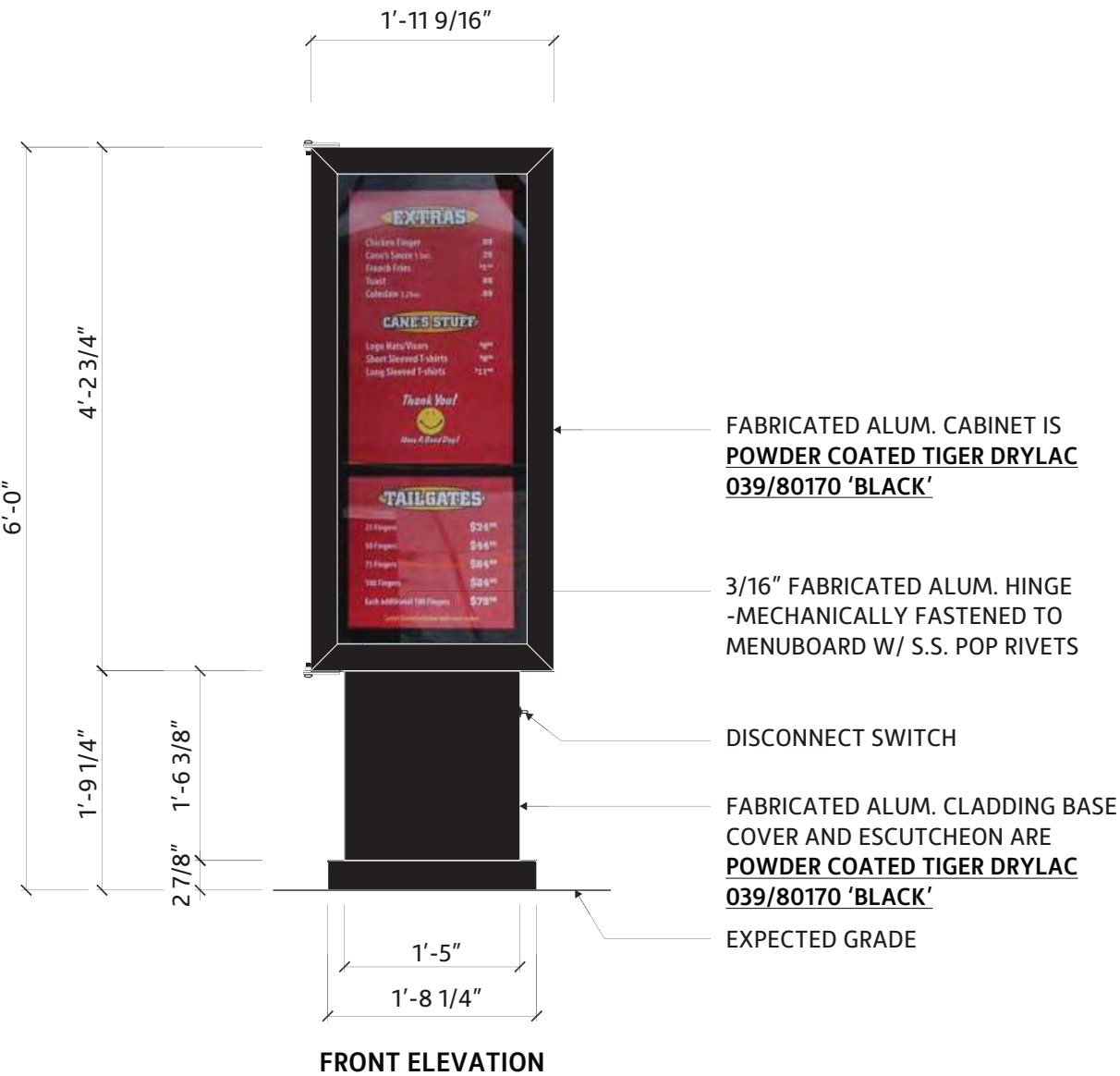
Example of an authorized drive-thru pre-sell board

SPECIFICATIONS

SIGN H:	4'-2 3/4"
SIGN W:	1'-11 9/16"
OAH:	6'-0"
OAW:	1'-11 9/16"
SIGN SF:	8.31 SF
TOTAL SF:	11.94 SF
ILLUMINATION:	Internal
AMPS:	1.8 @ 120 Volts Connected Load

CSP Guidelines

Occupants are allowed one pre-sell board, two menu boards and two speaker posts. The pre-sell board is allowed at 1.25 SF and 6' Overall height. The menu boards are allowed at 10.78 SF and 5' 11 5/8" high. Menu boards are also allowed an attached canopy not to exceed 10' 3 3/4" high. Speaker posts are allowed at 1.25 SF and 2' 6" overall height.



COLOR SCHEDULE			
PAINT COLORS		VINYL COLORS	
	MAP / 27386		3M / OPAQUE / #7725-10 / 'WHITE'
	PANTONE / #109C / 'YELLOW'		3M / OPAQUE / #680-10 / 'WHITE' / REFLECTIVE
	MAP / 2075		3M / TRANS. / #3630-015 / 'YELLOW'
	MAP / 'BLACK'		3M / TRANS. / #3630-53 / 'CARDINAL RED'
	MAP/ 'BLACK' / FINISH MATTE		3M / TRANS. / #3630-73 / 'RED'
	MAP/ 'BLACK' / FINISH SATIN		3M / OPAQUE / 'BLACK'



Drive-Thru Speaker Post

DESCRIPTION

Standard Speaker Post

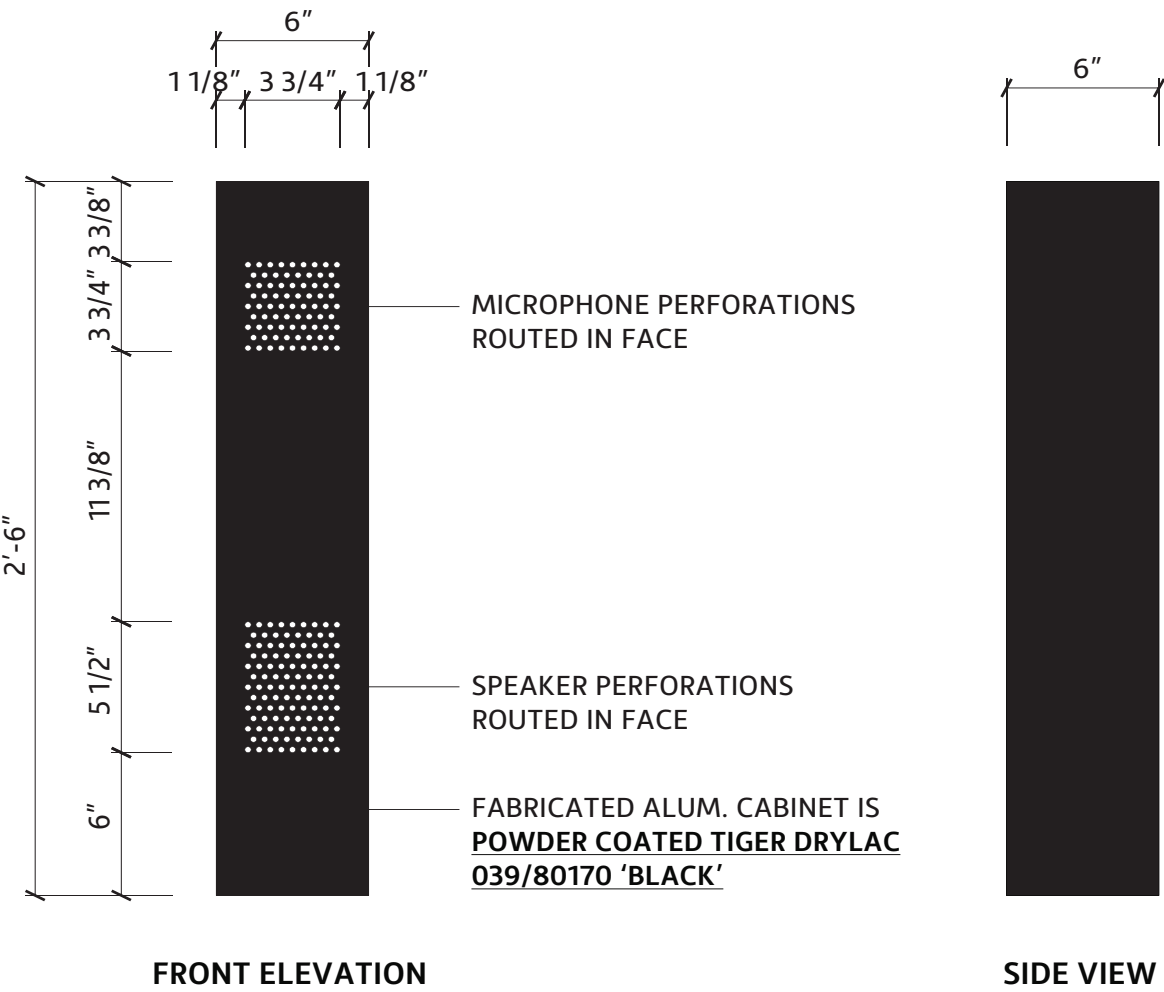
Example of an authorized drive-thru speaker post

SPECIFICATIONS

SIGN H:	2'-6"
SIGN W:	0'-6"
OAH:	
OAW:	
SIGN SF:	1.25
TOTAL SF:	
ILLUMINATION:	None
AMPS:	N/A

SITE SPECIFIC NOTES

Occupants are allowed one pre-sell board, two menu boards and two speaker posts. The pre-sell board is allowed at 1.25 SF and 6' Overall height. The menu boards are allowed at 10.78 SF and 5' 11 5/8" high. Menu boards are also allowed an attached canopy not to exceed 10' 3 3/4" high. Speaker posts are allowed at 1.25 SF and 2' 6" overall height.



COLOR SCHEDULE			
PAINT COLORS		VINYL COLORS	
	MAP / 27386		3M / OPAQUE / #7725-10 / 'WHITE'
	PANTONE / #109C / 'YELLOW'		3M / OPAQUE / #680-10 / 'WHITE' / REFLECTIVE
	MAP / 2075		3M / TRANS. / #3630-015 / 'YELLOW'
	MAP / 'BLACK'		3M / TRANS. / #3630-53 / 'CARDINAL RED'
	MAP / 'BLACK' / FINISH MATTE		3M / TRANS. / #3630-73 / 'RED'
	MAP / 'BLACK' / FINISH SATIN		3M / OPAQUE / 'BLACK'

19 RAI-NEON-OPEN

1'-2" x 2'-3" "OPEN" Neon Window Sign

DESCRIPTION

1'-2" x 2'-3" "OPEN" Neon Single-Face Suspended Window Sign, with Polycarbonate Case

Example of an authorized window sign

SPECIFICATIONS

- SIGN H:

SIGN W:

OAH:

OAW:

SIGN SF:

TOTAL SF:

ILLUMINATION:

AMPS:
- 1'-2 1/16"

2'-3"

TBD

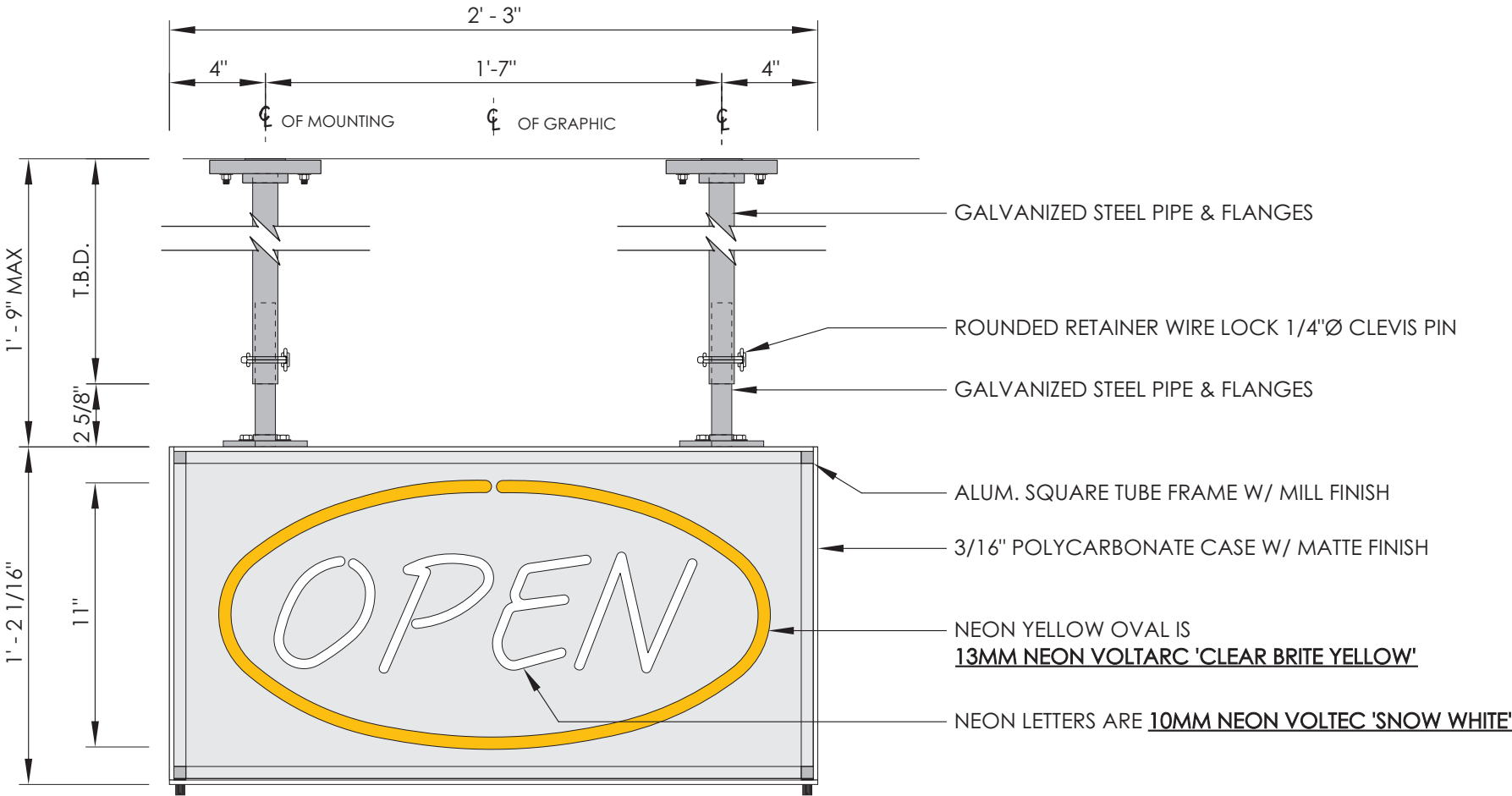
2.6 SF

Neon

2.8 @ 120 Volts Connected Load

SITE SPECIFIC NOTES

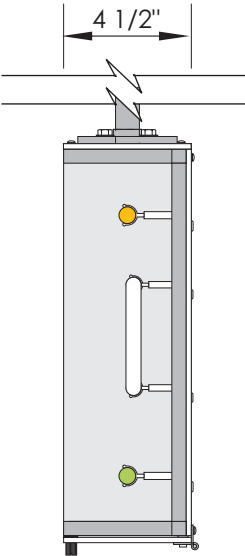
The occupant shall be allowed one illuminated window sign not to exceed 3 square feet. Window signs may be illuminated with neon lights or other illuminated. Signage comprised of neon or other exposed illuminated tubing or bulbs shall not comprise greater than 25% of the allowable window sign area on any facade.



FRONT VIEW

RC WINDOW SIGNS									
Product Number	H	W	OAW	G	D	C	E	SF	AMPS
RAI-NEON-OPEN	1'-2 1/16"	2'-3"	2'-3"	1'-9" MAX	4 1/2"	1'-7"	4"	2.64	2.8
RAI-NEON-CHICKEN FINGERS OG	1'- 6"	2'- 0"	2'- 0"	1'-9" MAX	4 1/2"	1'- 4"	4"	3	2.8
RAI-WN-SUS-ORDER-NEON	1'-2 1/16"	2'-3"	2'-3"	1'-9" MAX	4 1/2"	1'-7"	4"	2.64	1.4
RAI-WN-SUS-WALKUP-NEON	1'-2 1/16"	2'-3"	2'-3"	1'-9" MAX	4 1/2"	1'-7"	4"	2.64	1.4
RAI-WN-SUS-PICKUP-NEON	1'-2 1/16"	2'-3"	2'-3"	1'-9" MAX	4 1/2"	1'-7"	4"	2.64	1.4
RAI-WN-MPU-NEON	1'-2 1/16"	2'-3"	2'-3"	1'-9" MAX	4 1/2"	1'-7"	4"	2.64	2.8
RAI-WN-CF-NEON-H	1'-2 1/16"	4'-4"	4'-4"	1'-9" MAX	4 1/2"	3'-4"	6	5.08	2.8

COLOR SCHEDULE	
PAINT COLORS	VINYL COLORS
MAP / 27386	3M / OPAQUE / #7725-10 / 'WHITE'
PANTONE / #109C / 'YELLOW'	3M/ OPAQUE / #680-10 / 'WHITE' / REFLECTIVE
MAP / 2075	3M / TRANS./ #3630-015 / 'YELLOW'
MAP / 'BLACK'	3M / TRANS./ #3630-53 / 'CARDINAL RED'
MAP/ 'BLACK' / FINISH MATTE	3M / TRANS./ #3630-73 / 'RED'
MAP/ 'BLACK' / FINISH SATIN	3M / OPAQUE / 'BLACK'



SIDE VIEW

