

# FOR SALE - VALUE ADD OPPORTUNITY

Homewood Center  
18320-18336 S Kedzie Avenue  
Homewood, IL 60430



### CONFIDENTIALITY & DISCLAIMER

All materials and information received or derived from Frontline Real Estate Partners, LLC its directors, officers, agents, advisors, affiliates and/or any third party sources are provided without representation or warranty as to completeness, veracity, or accuracy, condition of the property, compliance or lack of compliance with applicable governmental requirements, developability or suitability, financial performance of the property, projected financial performance of the property for any party's intended use or any and all other matters.

Neither Frontline Real Estate Partners, LLC its directors, officers, agents, advisors, or affiliates makes any representation or warranty, express or implied, as to accuracy or completeness of the any materials or information provided, derived, or received. Materials and information from any source, whether written or verbal, that may be furnished for review are not a substitute for a party's active conduct of its own due diligence to determine these and other matters of significance to such party. Frontline Real Estate Partners, LLC will not investigate or verify any such matters or conduct due diligence for a party unless otherwise agreed in writing.

EACH PARTY SHALL CONDUCT ITS OWN INDEPENDENT INVESTIGATION AND DUE DILIGENCE.

Any party contemplating or under contract or in escrow for a transaction is urged to verify all information and to conduct their own inspections and investigations including through appropriate third party independent professionals selected by such party. All financial data should be verified by the party including by obtaining and reading applicable documents and reports and consulting appropriate independent professionals. Frontline Real Estate Partners, LLC makes no warranties and/or representations regarding the veracity, completeness, or relevance of any financial data or assumptions. Frontline Real Estate Partners, LLC does not serve as a financial advisor to any party regarding any proposed transaction. All data and assumptions regarding financial performance, including that used for financial modeling purposes, may differ from actual data or performance. Any estimates of market rents and/or projected rents that may be provided to a party do not necessarily mean that rents can be established at or increased to that level. Parties must evaluate any applicable contractual and governmental limitations as well as market conditions, vacancy factors and other issues in order to determine rents from or for the property.

Legal questions should be discussed by the party with an attorney. Tax questions should be discussed by the party with a certified public accountant or tax attorney. Title questions should be discussed by the party with a title officer or attorney. Questions regarding the condition of the property and whether the property complies with applicable governmental requirements should be discussed by the party with appropriate engineers, architects, contractors, other consultants and governmental agencies. All properties and services are marketed by Frontline Real Estate Partners, LLC in compliance with all applicable fair housing and equal opportunity laws.

### CONTENTS

PROPERTY INFORMATION	3
LOCATION INFORMATION	7
RENT ROLL	11
DEMOGRAPHICS	13
ADVISOR BIOS	15

**Matthew Tarshis**  
Principal

847.780.8063  
mtarshis@frontlinerepartners.com

**Andrew Rubin**  
Executive Vice President

224.628.4005  
arubin@frontlinerepartners.com

**Zack Pearlstein**  
Senior Vice President

847.275.6106  
zpearlstein@frontlinerepartners.com

**Andrew Picchiatti**  
Vice President

847.602.2005  
apicchiatti@frontlinerepartners.com

**Andrew Slovis**  
Associate Broker

847.989.6020  
aslovis@frontlinerepartners.com



# 1

## PROPERTY INFORMATION



### Offering Summary

Sale Price:	Subject to Offer
Building Size:	12,675 SF
Occupancy:	34.7%
Lot Size:	0.95 Acres
Year Built:	1979
Traffic Count:	Approx. 14,400 VPD
Submarket	South Chicago Suburbs
Market	Chicago

### Property Overview

12,675 SF multi-tenant neighborhood center located along the west side of Kedzie Avenue, just south of 183rd Street, in Homewood, IL (Chicago MSA). The center is located directly across the street from Jewel-Osco and Ollie's Bargain Outlet and is adjacent to U.S. Bank to the north and Car -X Tire & Auto to the south. There are several national retailers in the immediate vicinity including Aldi, McDonald's, Dollar Tree, Chase Bank, Walgreens, Starbucks, and Burger King, among others. The center is currently 35% leased to a mix of local Tenants including JJ Fish, Charm Cleaners, and Shining Salon, among others. Pylon signage fronting Kedzie Avenue provides visibility and exposure to over 14,000 VPD.

### Property Highlights

- 12,000+ SF center located along the east side of Kedzie Avenue, just south of 183rd Street, with over 32,000 VPD at the intersection
- Value-add opportunity with the ability to add value through lease-up and stabilization
- Pylon signage fronting Kedzie Avenue provides visibility and exposure to over 14,000 VPD
- Located directly across the street from Jewel- Osco and Ollie's Bargain Outlet and within the immediate vicinity of several national retailers including Aldi, McDonald's, Dollar Tree, Chase Bank, Walgreens, Starbucks, and Burger King, among others

**Matthew Tarshis**  
Principal

847.780.8063  
mtarshis@frontlinerepartners.com

**Andrew Rubin**  
Executive Vice President

224.628.4005  
arubin@frontlinerepartners.com

**Zack Pearlstein**  
Senior Vice President

847.275.6106  
zpearlstein@frontlinerepartners.com

**Andrew Picchietti**  
Vice President

847.602.2005  
apicchietti@frontlinerepartners.com

**Andrew Slovis**  
Associate Broker

847.989.6020  
aslovis@frontlinerepartners.com

# RETAIL PROPERTY FOR SALE

## PROPERTY DESCRIPTION



## Location Description

Homewood Center is located at 18320–18336 S. Kedzie Avenue in Homewood, Illinois, one of the South Suburbs' most dynamic and growing communities. With nearly one (1) acre of land, 12,600+ square feet of retail space, and 192 feet of highly visible frontage along Kedzie Avenue, the property provides unmatched exposure within a commercial corridor. Just 22 miles south of downtown Chicago, Homewood Center benefits from exceptional regional connectivity via Metra, Amtrak, and major interstates, drawing consistent traffic from both local residents and surrounding suburbs. Anchored by Homewood's award-winning schools, thriving downtown, and vibrant community amenities, this prime location positions tenants to capture strong consumer demand and long-term growth in one of Chicagoland's southern suburban markets.

## Property Highlights

- Positioned along S. Kedzie Avenue with 192 feet of highly visible frontage in a bustling commercial corridor
- Nearly one (1) acre of land with over 12,600 square feet of existing retail space, ideal for a variety of uses
- Located 22 miles south of downtown Chicago with convenient access to major interstates, Metra, and Amtrak
- Surrounded by a dense residential population with high household incomes and a stable consumer base
- Located in Homewood, a thriving suburb with award-winning schools, cultural amenities, and a dynamic downtown
- Value-add opportunity with the ability to add value through lease-up and stabilization

**Matthew Tarshis**  
Principal

847.780.8063  
mtarshis@frontlinerepartners.com

**Andrew Rubin**  
Executive Vice President

224.628.4005  
arubin@frontlinerepartners.com

**Zack Pearlstein**  
Senior Vice President

847.275.6106  
zpearlstein@frontlinerepartners.com

**Andrew Picchietti**  
Vice President

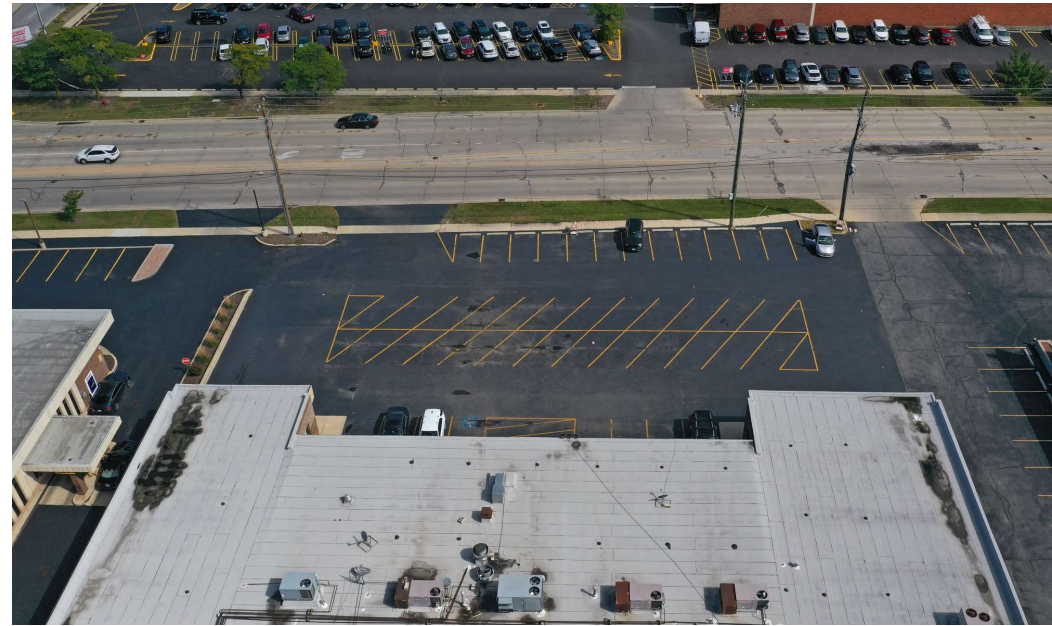
847.602.2005  
apicchietti@frontlinerepartners.com

**Andrew Slovis**  
Associate Broker

847.989.6020  
aslovis@frontlinerepartners.com

# RETAIL PROPERTY FOR SALE

ADDITIONAL PHOTOS



**Matthew Tarshis**  
Principal

847.780.8063  
mtarshis@frontlinerepartners.com

**Andrew Rubin**  
Executive Vice President

224.628.4005  
arubin@frontlinerepartners.com

**Zack Pearlstein**  
Senior Vice President

847.275.6106  
zpearlstein@frontlinerepartners.com

**Andrew Picchietti**  
Vice President

847.602.2005  
apicchietti@frontlinerepartners.com

**Andrew Slovis**  
Associate Broker

847.989.6020  
aslovis@frontlinerepartners.com

An aerial photograph of a large commercial property, possibly a shopping center or industrial park, with several buildings and extensive parking lots. A large, stylized green number '3' is overlaid in the center of the image. The background is slightly faded to make the text stand out.

3

RENT ROLL

# RETAIL PROPERTY FOR SALE

## RENT ROLL

Suite	Tenant Name	Size SF	% Of Building	Price / SF / Year	Annual Rent	Lease Start	Lease End
836-104	Charm Cleaners	1,100 SF	8.68%	\$9.41	\$10,351	7/1/2013	11/30/2027
836-105	JJ Fish	1,100 SF	8.68%	\$12.54	\$13,794	10/12/2017	10/31/2028
836-106	DeDe African Hair	1,100 SF	8.68%	\$14.69	\$16,159	9/1/2002	9/30/2027
836-107	Shining Salon	1,100 SF	8.68%	\$14.99	\$16,489	1/10/2014	9/30/2029
836-101	Vacant	4,050 SF	31.95%	-	-	-	-
836-103	Vacant	1,100 SF	8.68%	-	-	-	-
836-108	Vacant	3,125 SF	24.65%	-	-	-	-
<b>Totals</b>		<b>12,675 SF</b>			<b>\$56,793</b>		

**Matthew Tarshis**  
Principal  
847.780.8063  
mtarshis@frontlinerepartners.com

**Andrew Rubin**  
Executive Vice President  
224.628.4005  
arubin@frontlinerepartners.com

**Zack Pearlstein**  
Senior Vice President  
847.275.6106  
zpearlstein@frontlinerepartners.com

**Andrew Picchiatti**  
Vice President  
847.602.2005  
apicchiatti@frontlinerepartners.com

**Andrew Slovis**  
Associate Broker  
847.989.6020  
aslovis@frontlinerepartners.com