



D-Series Size 0 LED Area Luminaire



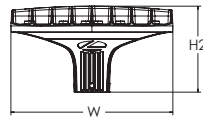
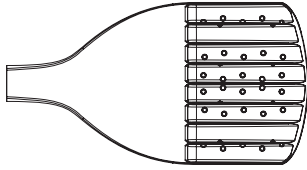
Catalog Number	DSX0-LED-P5-50K-70CRI-T5M-MVOLT-SPA-DDBXD
Notes	
Type	SP1

Hit the Tab key or mouse over the page to see all interactive elements.

d#series

Specifications

EPA:	0.44 ft ² (0.04 m ²)
Length:	26.18" (66.5 cm)
Width:	14.06" (35.7 cm)
Height H1:	2.26" (5.7 cm)
Height H2:	7.46" (18.9 cm)
Weight:	23 lbs (10.4 kg)



Introduction

The modern styling of the D-Series features a highly refined aesthetic that blends seamlessly with its environment. The D-Series offers the benefits of the latest in LED technology into a high performance, high efficacy, long-life luminaire.

The photometric performance results in sites with excellent uniformity, greater pole spacing and lower power density. D-Series outstanding photometry aids in reducing the number of poles required in area lighting applications, with typical energy savings of 70% and expected service life of over 100,000 hours.

Ordering Information

EXAMPLE: DSX0 LED P6 40K 70CRI T3M MVOLT SPA NLTAIR2 PIRHN DDBXD

DSX0 LED	P5	50K	70CRI	T5M	MVOLT	SPA		
Series	LEDs	Color temperature ²	Color Rendering Index ²	Distribution	Voltage	Mounting		
DSX0 LED	Forward optics	(this section 70CRI only)		AFR Automotive front row T1S Type I short T2M Type II medium T3M Type III medium T3LG Type III low glare ³ T4M Type IV medium T4LG Type IV low glare ³ TFTM Forward throw medium	T5M Type V medium T5LG Type V low glare T5W Type V wide BLC3 Type III backlight control ³ BLC4 Type IV backlight control ³ LCCO Left corner cutoff ³ RCCO Right corner cutoff ³	Shipped included SPA Square pole mounting (#8 drilling, 3.5" min. SQ pole) RPA Round pole mounting (#8 drilling, 3" min. RND pole) SPA5 Square pole mounting (#5 drilling, 3" min. SQ pole) ⁹ RPA5 Round pole mounting (#5 drilling, 3" min. RND pole) ⁹ SPA8N Square narrow pole mounting (#8 drilling, 3" min. SQ pole) WBA Wall bracket ¹⁰ MA Mast arm adapter (mounts on 2.3/8" OD horizontal tenon)		
		P1 P5	30K 3000K				70CRI	MVOLT (120V-277V) ⁴
		P2 P6	40K 4000K				70CRI	HVOLT (347V-480V) ^{5,6}
		P3 P7	50K 5000K				70CRI	XVOLT (277V-480V) ^{7,8}
		P4	(this section 80CRI only, extended lead times apply)					
	Rotated optics							
	P10 ¹ P12 ¹	27K 2700K	80CRI					
	P11 ¹ P13 ¹	30K 3000K	80CRI					
			35K 3500K	80CRI				
			40K 4000K	80CRI				
		50K 5000K	80CRI					

Control options		Other options		DDBXD			
Shipped installed		Shipped installed		Finish (required)			
NLTAIR2 PIRHN	nLight AIR gen 2 enabled with bi-level motion / ambient sensor, 8-40' mounting height, ambient sensor enabled at 2fc. ^{11, 12, 18, 19}	PER7	Seven-pin receptacle only (controls ordered separate) ^{14, 19}	HS	Houseside shield (black finish standard) ²⁰	DDBXD	Dark Bronze
PIR	High/low, motion/ambient sensor, 8-40' mounting height, ambient sensor enabled at 2fc. ^{13, 18, 19}	FAO	Field adjustable output ^{15, 19}	L90	Left rotated optics ¹	DBLXD	Black
PER	NEMA twist-lock receptacle only (controls ordered separate) ¹⁴	BL30	Bi-level switched dimming, 30% ^{16, 19}	R90	Right rotated optics ¹	DNAXD	Natural Aluminum
PERS	Five-pin receptacle only (controls ordered separate) ^{14, 19}	BL50	Bi-level switched dimming, 50% ^{16, 19}	CCE	Coastal Construction ²¹	DWHXD	White
		DMG	0-10v dimming wires pulled outside fixture (for use with an external control, ordered separately) ¹⁷	HA	50°C ambient operation ²²	DDBTXD	Textured dark bronze
				Shipped separately		DBL BXD	Textured black
				EGSR	External Glare Shield (reversible, field install required, matches housing finish)	DNATXD	Textured natural aluminum
				BSDB	Bird Spikes (field install required)	DWHGXD	Textured white



Ordering Information

Accessories

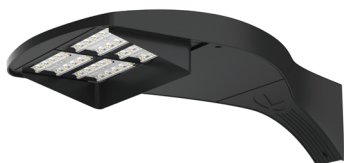
Ordered and shipped separately.

DLL127F 1.5 JU	Photocell - SSL twist-lock (120-277V) ²³
DLL347F 1.5 CUL JU	Photocell - SSL twist-lock (347V) ²³
DLL480F 1.5 CUL JU	Photocell - SSL twist-lock (480V) ²³
DSHORT SBK	Shorting cap ²³
DSXOHS P#	House-side shield (enter package number P1-7, P10-13 in place of #)
DSXRPA (FINISH)	Round pole adapter (#8 drilling, specify finish)
DSXRPA5 (FINISH)	Round pole adapter #5 drilling (specify finish)
DSXSPA5 (FINISH)	Square pole adapter #5 drilling (specify finish)
DSXOEGSR (FINISH)	External glare shield (specify finish)
DSXOBSDB (FINISH)	Bird spike deterrent bracket (specify finish)

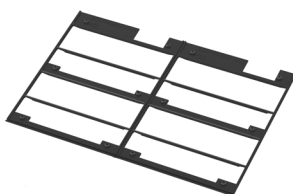
NOTES

- 1 Rotated optics available with packages P10, P11, P12 and P13. Must be combined with option L90 or R90.
- 2 30K, 40K, and 50K available in 70CRI and 80CRI. 27K and 35K only available with 80CRI. Contact Technical Support for other possible combinations.
- 3 T3LG, T4LG, BLC3, BLC4, LCCO, RCCO not available with option HS.
- 4 MVOLT driver operates on any line voltage from 120-277V (50/60 Hz).
- 5 HVOLT driver operates on any line voltage from 347-480V (50/60 Hz).
- 6 HVOLT not available with package P1, P2 and P10 when combined with option NLTAIR2 PIRHN or option PIR.
- 7 XVOLT operates with any voltage between 277V and 480V (50/60 Hz).
- 8 XVOLT not available in packages P1, P2 or P10.
- 9 SPAS and RPA5 for use with #5 drilling only (Not for use with #8 drilling).
- 10 WBA cannot be combined with Type 5 distributions plus photocell (PER).
- 11 NLTAIR2 and PIRHN must be ordered together. For more information on nLight Air 2.
- 12 NLTAIR2 PIRHN not available with other controls including PIR, PER, PER5, PER7, FAO, BL30, BL50 and DMG. NLTAIR2 PIRHN not available with P1, P2 and P10 using HVOLT. NLTAIR2 PIRHN not available with P1, P2 and P10 using XVOLT.
- 13 PIR not available with NLTAIR2, PER, PER5, PER7, FAO BL30, BL50 and DMG. PIR not available with P1, P2 and P10 using HVOLT. PIR not available with P1, P2 and P10 using XVOLT.
- 14 PER/PER5/PER7 not available with NLTAIR2, PIR, BL30, BL50. Photocell ordered and shipped as a separate line item from Acuity Brands Controls. See accessories. Shorting Cap included.
- 15 FAO not available with other dimming control options NLTAIR2 PIRHN, PIR, PER5, PER7, BL30, BL50, or DMG.
- 16 BL30 and BL50 are not available with NLTAIR2 PIRHN, PIR, PER, PER5, PER7, FAO and DMG.
- 17 DMG not available with NLTAIR2 PIRHN, PIR, PER, PER5, PER7, BL30, BL50 and FAO.
- 18 Reference Motion Sensor Default Settings table on page 4 to see functionality.
- 19 Reference Controls Options table on page 4.
- 20 Option HS not available with T3LG, T4LG, BLC3, BLC4, LCCO and RCCO distribution. Also available as a separate accessory; see Accessories information.
- 21 CCE option not available with option BS and EGSR. Contact Technical Support for availability.
- 22 Option HA not available with performance packages P6, P7, P12 and P13.
- 23 Requires luminaire to be specified with PER, PER5 or PER7 option. See Controls Table on page 4.

Shield Accessories



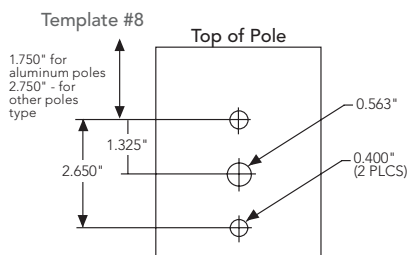
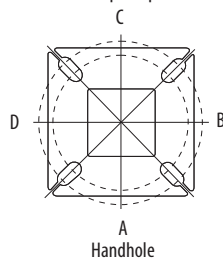
External Glare Shield (EGSR)



House Side Shield (HS)

Drilling

HANDHOLE ORIENTATION (from top of pole)



Tenon Mounting Slipfitter

Tenon O.D.	Mounting	Single Unit	2 @ 180	2 @ 90	3 @ 90	3 @ 120	4 @ 90
2-3/8"	RPA	AS3-5 190	AS3-5 280	AS3-5 290	AS3-5 390	AS3-5 320	AS3-5 490
2-7/8"	RPA	AST25-190	AST25-280	AST25-290	AST25-390	AST25-320	AST25-490
4"	RPA	AST35-190	AST35-280	AST35-290	AST35-390	AST35-320	AST35-490

Mounting Option	Drilling Template	Single	2 @ 180	2 @ 90	3 @ 90	3 @ 120	4 @ 90
Head Location		Side B	Side B & D	Side B & C	Side B, C & D	Round Pole Only	Side A, B, C & D
Drill Nomenclature	#8	DM19AS	DM28AS	DM29AS	DM39AS	DM32AS	DM49AS
Minimum Acceptable Outside Pole Dimension							
SPA	#8	3.5"	3.5"	3.5"	3.5"	3"	3.5"
RPA	#8	3"	3"	3"	3"	3"	3"
SPAS	#5	3"	3"	3"	3"	3"	3"
RPA5	#5	3"	3"	3"	3"	3"	3"
SPA8N	#8	3"	3"	3"	3"	3"	3"

DSX0 Area Luminaire - EPA

*Includes luminaire and integral mounting arm. Other tenons, arms, brackets or other accessories are not included in this EPA data.

Fixture Quantity & Mounting Configuration	Single DM19	2 @ 180 DM28	2 @ 90 DM29	3 @ 90 DM39	3 @ 120 DM32	4 @ 90 DM49
Mounting Type						
DSX0 with SPA	0.44	0.88	0.96	1.18	---	1.16
DSX0 with SPAS, SPA8N	0.51	1.02	1.06	1.26	---	1.29
DSX0 with RPA, RPA5	0.51	1.02	1.06	1.26	1.24	1.29
DSX0 with MA	0.64	1.28	1.24	1.67	1.70	1.93

Catalog Number	SSS-20'-5G-DM19AS-DDBXD
Notes	
Type	Pole for Fixtures SP1, SP2, SP3 & SP4

FEATURES & SPECIFICATIONS

INTENDED USE — These specifications are for USA standards only. Square Straight Steel is a general purpose light pole for up to 39-foot mounting heights. This pole provides a robust yet cost effective option for mounting area lights and floodlights.

CONSTRUCTION

Pole Shaft: The pole shaft is of uniform dimension and wall thickness and is made of a weldable-grade, hot-rolled, commercial-quality steel tubing with a minimum yield of 55 KSI (11-gauge, 0.120"), or 50 KSI (7-gauge, 0.179"). Shaft is one-piece with a full-length longitudinal high-frequency electric resistance weld. Uniformly square in cross-section with flat sides, small corner radii and excellent torsional qualities. Available shaft widths are 4", 5" and 6".

Pole Top: Options include tenon top, drilled for side mount fixture, tenon with drilling (includes extra handhole) and open top. Side drilled and open top poles include a removable top cap.

Handhole: A reinforced handhole with grounding provision is provided at 18" from the base on side A. Positioning the handhole lower may not be possible and requires engineering review; consult Tech Support-Outdoor for further information. Every handhole includes a cover and cover attachment hardware. The handhole has a nominal dimension of 2.5" x 5".

Base Cover: A durable ABS plastic two-piece full base cover, finished to match the pole, is provided with each pole assembly. Additional base cover options are available upon request.

Anchor Base/Bolts: Anchor base is fabricated from steel that meets ASTM A36 standards and can be altered to match existing foundations; consult factory for modifications. Anchor bolts are manufactured to ASTM F1554 Standards grade 55, (55 KSI minimum yield strength and tensile strength of 75-95 KSI). Top threaded portion (nominal 12") is hot-dipped galvanized per ASTM A-153.

HARDWARE — All structural fasteners are high-strength galvanized carbon steel. All non-structural fasteners are galvanized or zinc-plated carbon steel or stainless steel.

FINISH — Extra durable painted finish is coated with TGIC (Triglycidyl Isocyanurate) Polyester powder that meets 5A and 5B classifications of ASTM D3359. Powder-coat finishes include Dark Bronze, White, Black, and Natural Aluminum colors. Architectural Colors and Special Finishes are available by quote and include, but are not limited to Paint over Hot-dipped Galvanized, RAL Colors, Custom Colors and Extended Warranty Finishes.

BUY AMERICAN — Product with the BAA option is assembled in the USA and meets the Buy America(n) government procurement requirements under FAR, DFARS and DOT. Please refer to www.acuitybrands.com/buy-american for additional information.

INSTALLATION — **Do not** erect poles without having fixtures installed. Factory-supplied templates must be used when setting anchor bolts. Lithonia Lighting will not accept claim for incorrect anchorage placement due to failure to use Lithonia Lighting factory templates. If poles are stored outside, all protective wrapping must be removed immediately upon delivery to prevent finish damage. Lithonia Lighting is not responsible for the foundation design.

WARRANTY — 1-year limited warranty. This is the only warranty provided and no other statements in this specification sheet create any warranty of any kind. All other express and implied warranties are disclaimed. Complete warranty terms located at: www.acuitybrands.com/support/warranty/terms-and-conditions

NOTE: Actual performance may differ as a result of end-user environment and application. Specifications subject to change without notice.



Anchor Base Poles

SSS

SQUARE STRAIGHT STEEL



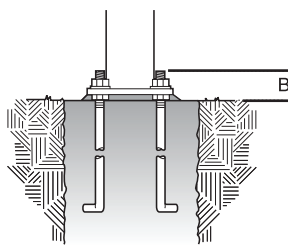
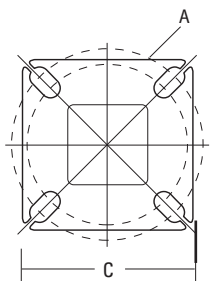
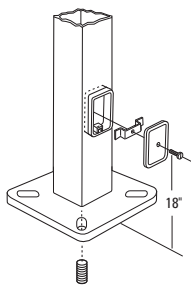
SSS Square Straight Steel Poles

TECHNICAL INFORMATION — EPA (ft²) with 1.3 gust

Catalog Number	Nominal Shaft Length (ft.)*	Pole Shaft Size (Base in. x Top in. x ft.)	Wall thick (in)	Gauge	EPA (ft ²) with 1.3 gust						Bolt circle (in)	Bolt size (in. x in. x in.)	Approximate ship weight (lbs.)
					80 MPH	Max. weight	90 MPH	Max. weight	100 MPH	Max. weight			
SSS 10 4C	10	4.0 x 10.0	0.120"	11	30.6	765	23.8	595	18.9	473	8--9	3/4 x 18 x 3	75
SSS 12 4C	12	4.0 x 12.0	0.120"	11	24.4	610	18.8	470	14.8	370	8--9	3/4 x 18 x 3	90
SSS 14 4C	14	4.0 x 14.0	0.120"	11	19.9	498	15.1	378	11.7	293	8--9	3/4 x 18 x 3	100
SSS 16 4C	16	4.0 x 16.0	0.120"	11	15.9	398	11.8	295	8.9	223	8--9	3/4 x 18 x 3	115
SSS 18 4C	18	4.0 x 18.0	0.120"	11	12.6	315	9.2	230	6.7	168	8--9	3/4 x 18 x 3	125
SSS 20 4C	20	4.0 x 20.0	0.120"	11	9.6	240	6.7	167	4.5	150	8--9	3/4 x 18 x 3	140
SSS 20 4G	20	4.0 x 20.0	0.179"	7	14	350	11	275	8	200	8--9	3/4 x 30 x 3	198
SSS 20 5C	20	5.0 x 20.0	0.120"	11	17.7	443	12.7	343	9.4	235	10--12	1 x 36 x 4	185
SSS 20 5G	20	5.0 x 20.0	0.179"	7	28.1	703	21.4	535	16.2	405	10--12	1 x 36 x 4	265
SSS 25 4C	25	4.0 x 25.0	0.120"	11	4.8	150	2.6	100	1	50	8--9	3/4 x 18 x 3	170
SSS 25 4G	25	4.0 x 25.0	0.179"	7	10.8	270	7.7	188	5.4	135	8--9	3/4 x 30 x 3	245
SSS 25 5C	25	5.0 x 25.0	0.120"	11	9.8	245	6.3	157	3.7	150	10--12	1 x 36 x 4	225
SSS 25 5G	25	5.0 x 25.0	0.179"	7	18.5	463	13.3	333	9.5	238	10--12	1 x 36 x 4	360
SSS 30 4G	30	4.0 x 30.0	0.179"	7	6.7	168	4.4	110	2.6	65	8--9	3/4 x 30 x 3	295
SSS 30 5C	30	5.0 x 30.0	0.120"	11	4.7	150	2	50	--	--	10--12	1 x 36 x 4	265
SSS 30 5G	30	5.0 x 30.0	0.179"	7	10.7	267	6.7	167	3.9	100	10--12	1 x 36 x 4	380
SSS 30 6G	30	6.0 x 30.0	0.179"	7	19	475	13.2	330	9	225	11--13	1 x 36 x 4	520
SSS 35 5G	35	5.0 x 35.0	0.179"	7	5.9	150	2.5	100	--	--	10--12	1 x 36 x 4	440
SSS 35 6G	35	6.0 x 35.0	0.179"	7	12.4	310	7.6	190	4.2	105	11--13	1 x 36 x 4	540
SSS 39 6G	39	6.0 x 39.0	0.179"	7	7.2	180	3	75	--	--	11--13	1 x 36 x 4	605

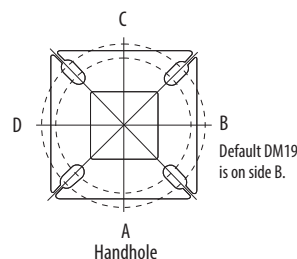
NOTE: * EPA values are based ASCE 7-93 wind map. For 1/2 ft increments, add -6 to the pole height. Ex: 20-6 equals 20ft 6in.

BASE DETAIL



POLE DATA							
Shaft base size	Bolt circle A	Bolt projection B	Base square C	Base plate thickness	Template description	Anchor bolt description	Anchor bolt and template description
4"C	8" - 9"	3.25" - 3.75"	8" - 8.25"	0.75"	ABTEMPLATE PJ50004	AB18-0	ABSSS-4C
4"G	8" - 9"	3.38" - 3.75"	8" - 8.25"	0.875"	ABTEMPLATE PJ50004	AB30-0	ABSSS-4G
5"	10" - 12"	3.5" - 4"	11"	1"	ABTEMPLATE PJ50010	AB36-0	ABSSS-5
6"	11" - 13"	4" - 4.50"	12.5"	1"	ABTEMPLATE PJ50011	AB36-0	N/A

HANDHOLE ORIENTATION



IMPORTANT INSTALLATION NOTES:

- **Do not** erect poles without having fixtures installed.
- Factory-supplied templates must be used when setting anchor bolts. Lithonia Lighting will not accept claim for incorrect anchorage placement due to failure to use Lithonia Lighting factory templates.
- If poles are stored outside, all protective wrapping must be removed immediately upon delivery to prevent finish damage.
- Lithonia Lighting is not responsible for the foundation design.
- Bolt circles have +/- 1/2" tolerance.

CAUTION: These specifications are intended for general purposes only. Lithonia Lighting reserves the right to change material or design, without prior notice, in a continuing effort to upgrade its products.