



810 Maple Avenue

Building Repositioning

Existing Building

PIN: 29-32-200-022-0000

Case 22-25 AC

August 4, 2022



810 Maple Avenue

Building Repositioning

South Elevation

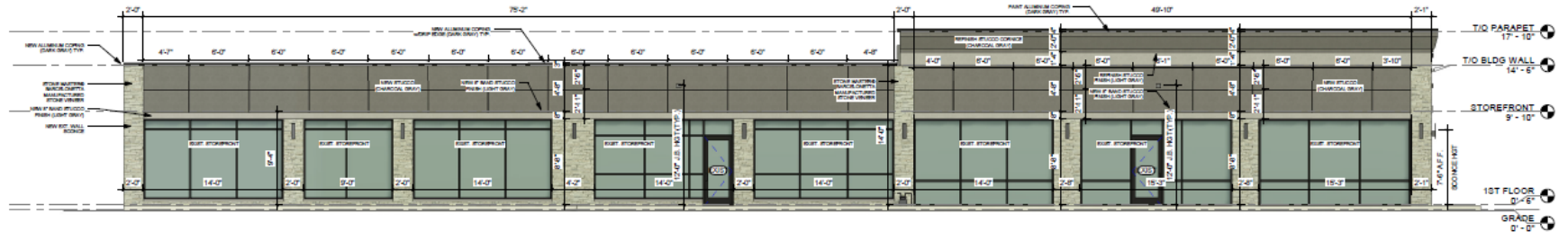
PIN: 29-32-200-022-0000

Case 22-25 AC

August 4, 2022



EXISTING



PROPOSED



810 Maple Avenue

Building Repositioning

North Elevation

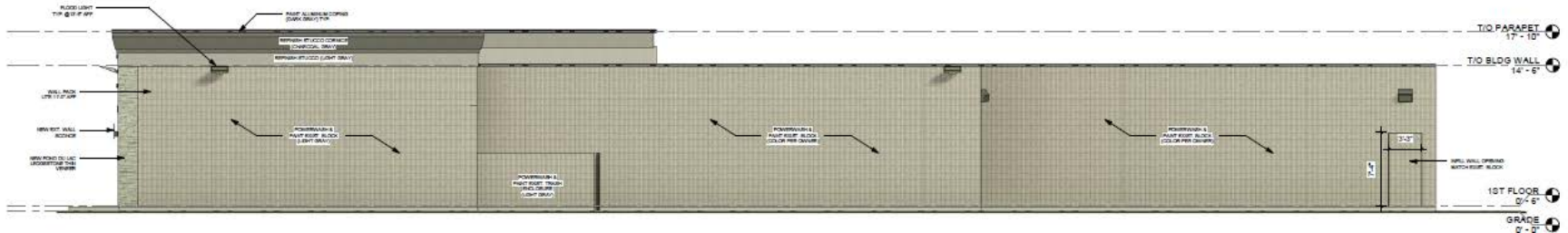
PIN: 29-32-200-022-0000

Case 22-25 AC

August 4, 2022



EXISTING



PROPOSED



810 Maple Avenue

Building Repositioning

Materials

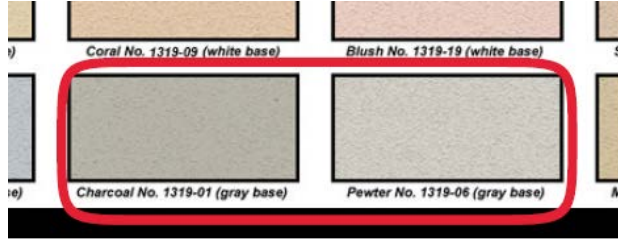
PIN: 29-32-200-022-0000

Case 22-25 AC

August 4, 2022



Stone Veneer



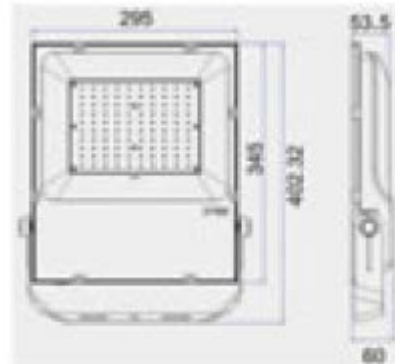
Stucco Colors



Wall Sconce



Wall Pack
Security Light



Flood Light



CALAMAGROSTIS - CL



AMORPHA FRUTICOSA - IN



BAPTISIA - BA



BUXUS MICROPHYLLA - BM

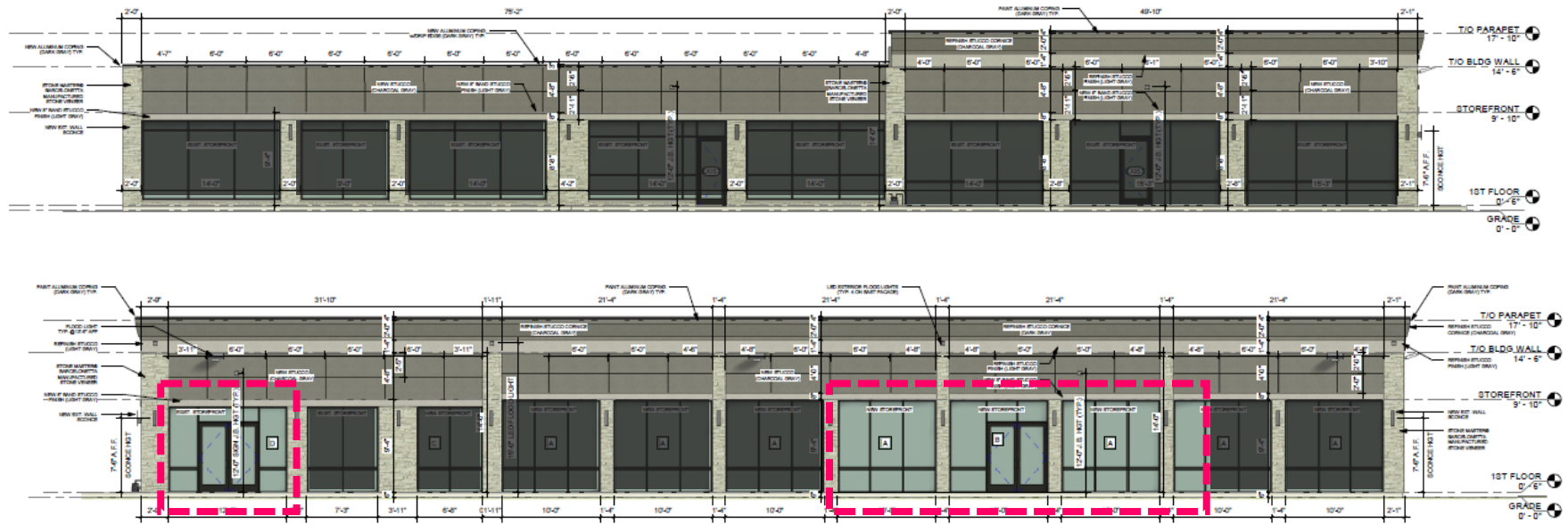


BLACK MULCH - BLK



ACER TRUNCATUM - AT

Landscape Palette



All windows will have full height walls installed inside, blocking transparency and visibility, *except* those highlighted

