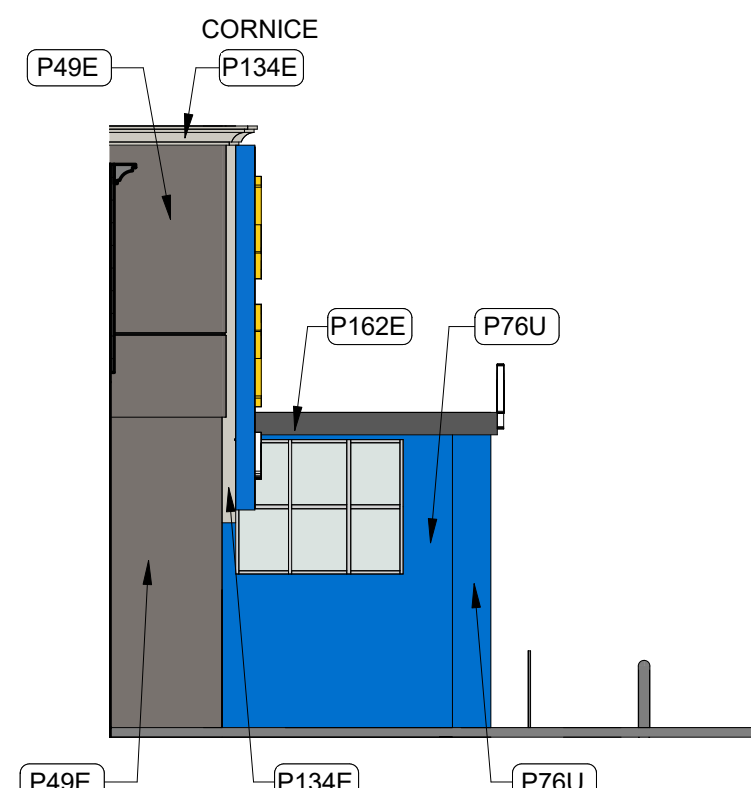






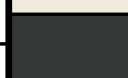
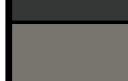
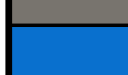




The diagram shows a cross-section of a building facade. A blue wall is on the left, and a grey roof is on top. A window with a grid pattern is on the wall. Two pressure transducers are indicated: P76U is located on the wall and the roof edge, and P134E is located on the roof surface. Arrows point from the labels to the respective locations.

SIDE WALL AND GR VESTIBULE ELEVATION



SIDE WALL AND GM VESTIBULE ELEVATION

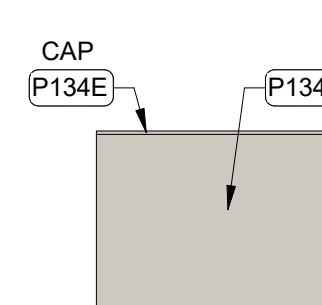
1. REMOVAL OF LIT ID# LOGO SIGNS AND UNLIT EXTERIOR STU MOUNTED BUILDING SIGNS BY OTHERS
2. GENERAL CONTRACTOR TO PATCH/REPAIR HOLES LEFT AFTER SIGNS ARE REMOVED AND REPAIR AS SCOPED AND NOTED
3. REMOVE EXTERIOR TENANT SIGNS. COORDINATE REMOVAL WITH WALMART CM AND TENANT PRIOR TO BEGINNING WORK. DELIVER REMOVED TENANT SIGNS TO TENANT
4. REMOVAL OF BUILDING MOUNTED ITEMS, SHOWN OR NOTED TO BE DEMOLISHED OR AS REQUIRED BY SCOPE OF WORK, SHALL OCCUR PRIOR TO PAINTING BUILDING. COORDINATE DEMOLITION WORK SO EXTERIOR PAINTING WILL OCCUR PRIOR TO INSTALLATION OF BUILDING MOUNTED ITEMS.

COLOR LEGEND		
	P#	COLOR NAME
	P5E	SAFETY YELLOW OSHA STANDARD
	P18E	MATCH SW# 7507 STONE LION
	P21E	SAFETY RED
	P33E	DOVER WHITE
	P36E	DOMINO
	P49E	DARK GRAY
	P76U	WALMART BLUE (URETHANE-LIKE)
	P81E	BLACK
	P134E	LIGHT GRAY
	P135E	MEDIUM GRAY
	P162E	BLACK GRAY

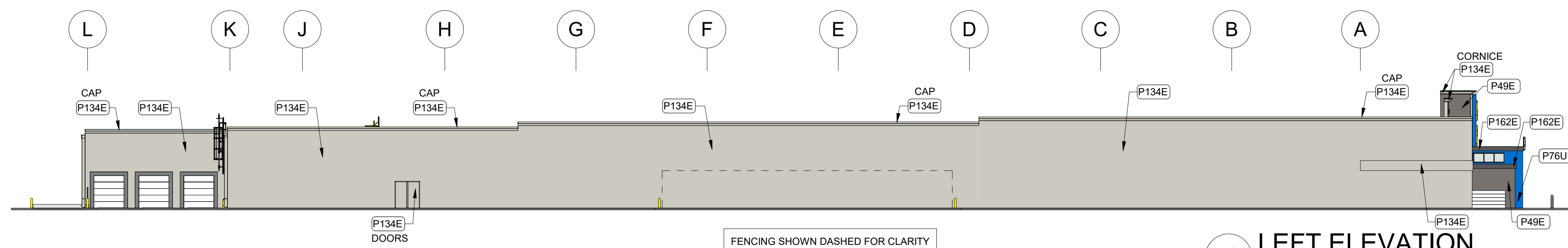
- 1 POWER WASH 100% OF EXTERIOR WALLS PRIOR TO PAINTING.
- 2 PATCH AND REPAIR EXTERIOR WALL SURFACES, CRACKS, DROPPINGS OR EXPOSED DUE TO REMOVAL OF BUILDING MOUNTED ITEMS, TO MATCH ADJACENT AS REQUIRED.
- 3 REMOVE SEALANT AND BACKER MATERIAL FROM ALL JOINTS, CRACKS, CONTROL JOINTS, AND CRACKS. FILL AND SEAL JOINTS, REF SPEC 07900.
- 4 REFER TO DETAILS ON SHEET A2, FOR SUBSTRATE, AND PREPARATIONS AT LOCATIONS OF BUILDING MOUNTED SIGNS.
- 5 RESURFACE EXISTING EIFS WHERE SHOWN (HATCHED).
- 6 PAINT EXTERIOR OF BUILDING AS SHOWN. AT WALL(S) AND (IF REQUIRED) GUTTER MASK AND PAINT AROUND SIGN CHARACTERS.
- 7 PAINT DOOR HOODS, HOLLOW METAL STEEL DOORS, AND GUTTER HOODS. PAINT EXPOSED METAL FLASHING, HANDRAILS, AND EXPOSED MISCELLANEOUS STEEL TO MATCH ADJACENT BUILDING COLOR.
- 8 PAINT ALL GAS PIPES ON ROOF P5E. PAINT GAS PIPES ALONG SIDE WALL TO GRADE TO MATCH ADJACENT BUILDING COLOR.
- 9 PAINT CANOPY STRUCTURAL STEEL AND FLASHING TO MATCH ADJACENT WALL.
- 10 PAINT CANOPY AND BE VISIBLE TO AND ACCESSED BY CUSTOMERS. PAINT UNDERSIDE OF CANOPY DECK DO NOT PAINT CANOPY DECK IF NOT PREVIOUSLY PAINTED.
- 11 PAINT TRUNK CARRIER - P33E ON JMB, POSE, JMB, POSE, ON P33H HANDRAILS.
- 12 PAINT CHIMNEY VALVES P21E DO NOT PAINT OVER SIGN GLASS OR FIRE ALARM BELL.
- 13 PAINT EXTERIOR OF FIRE BELL MOUNTING TO MATCH EXTERIOR OF FIRE BELL MOUNTING.
- 14 PAINT ALL SIGN HOUSING PLASTIC, BOLLARD, SLEEVE.
- 15 PAINT TO MATCH QUIK BIK, STONE VENEER, FACE BRICK, BRICK, TILTED TILT-WALL OR PRECAST PANELS.



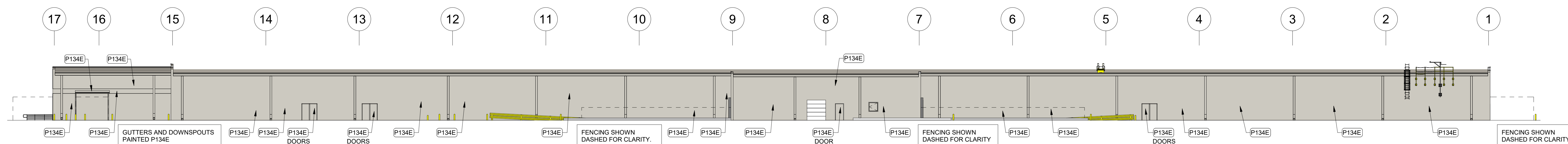
9 SCREENING WALL REAR ELEVATION



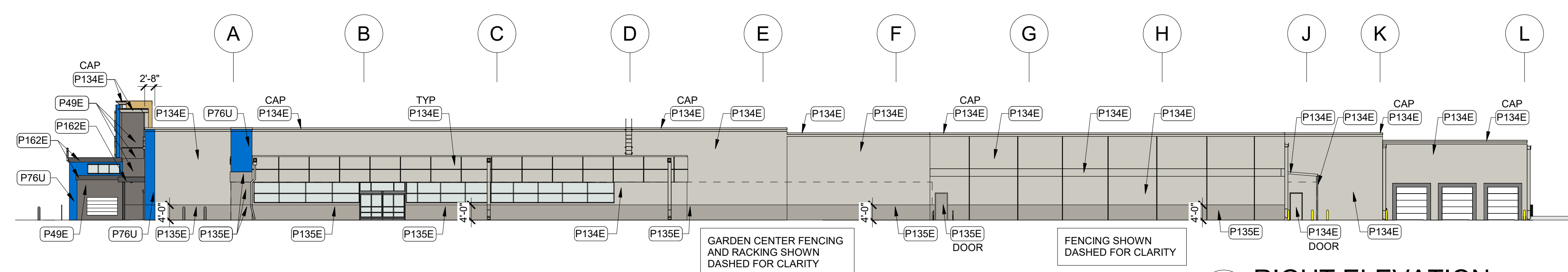
7 SIDE ELEVATION



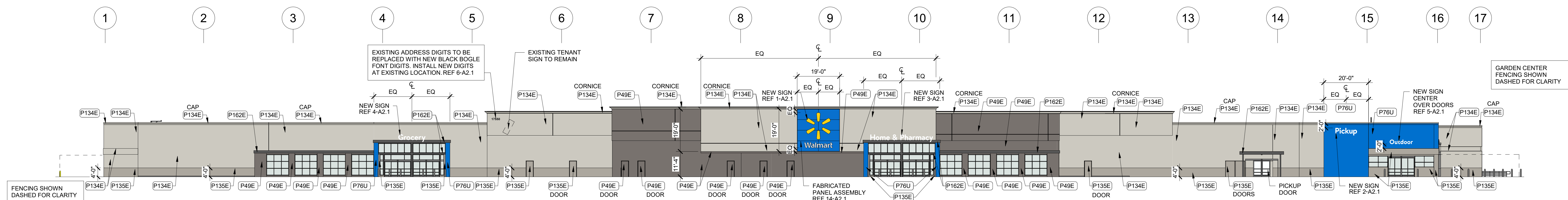
4 LEFT ELEVATION



2 REAR ELEVATION



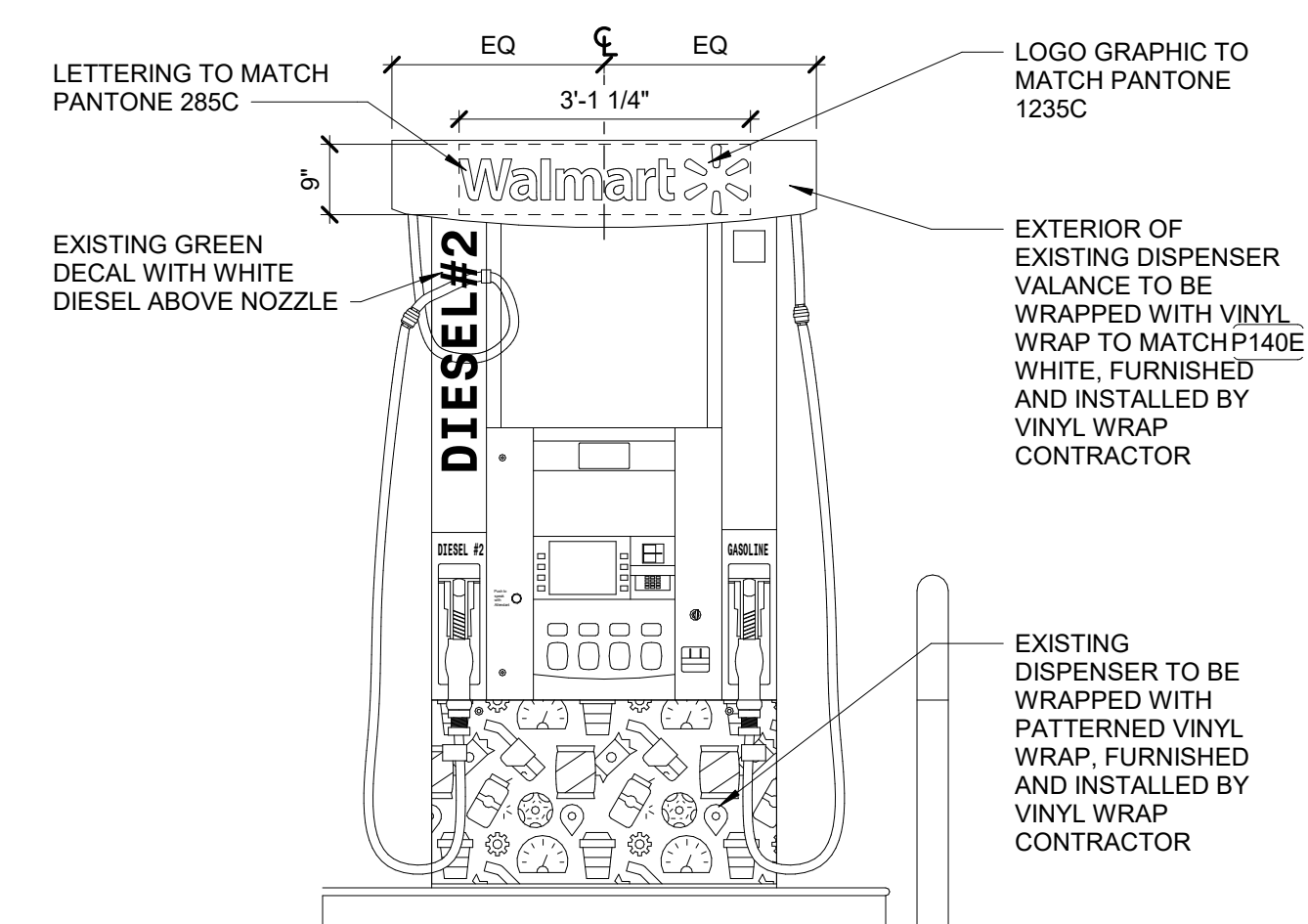
2 RIGHT ELEVATION



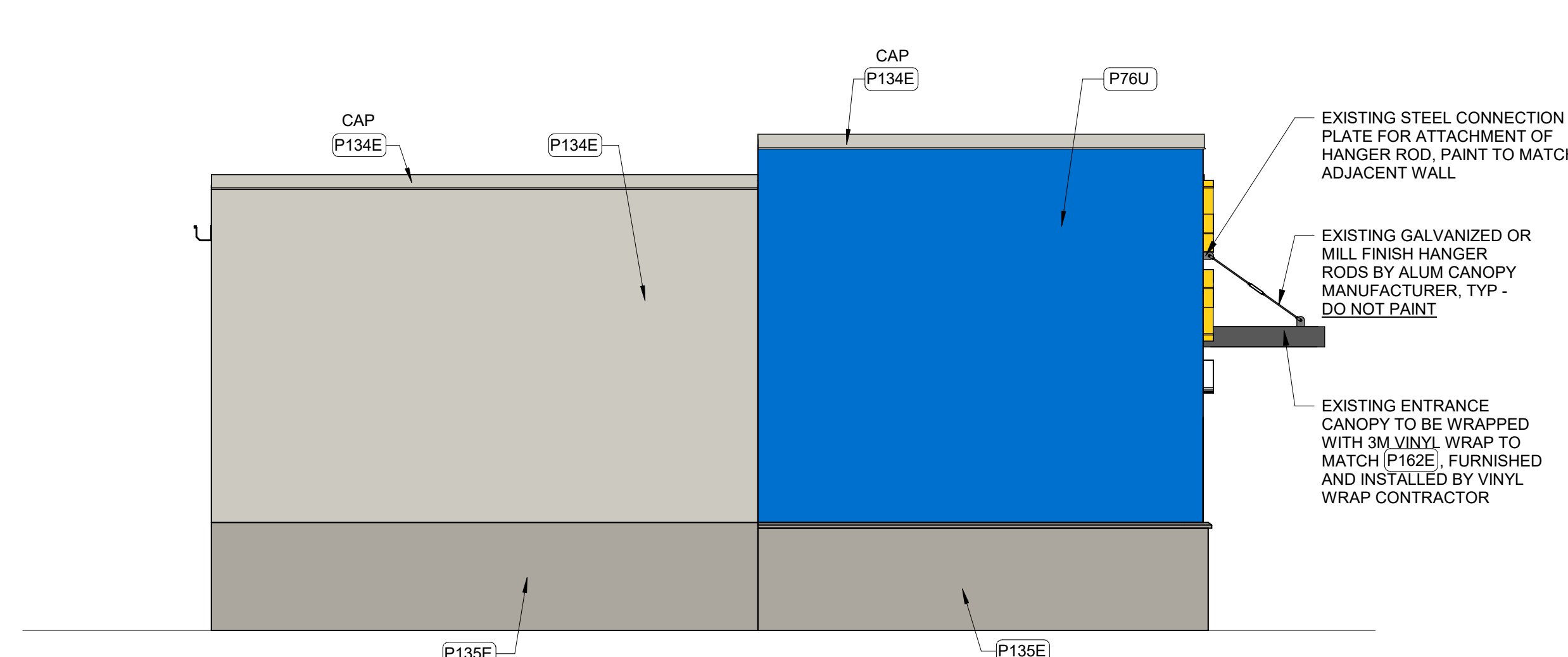
1 FRONT ELEVATION

SHEET NOTES

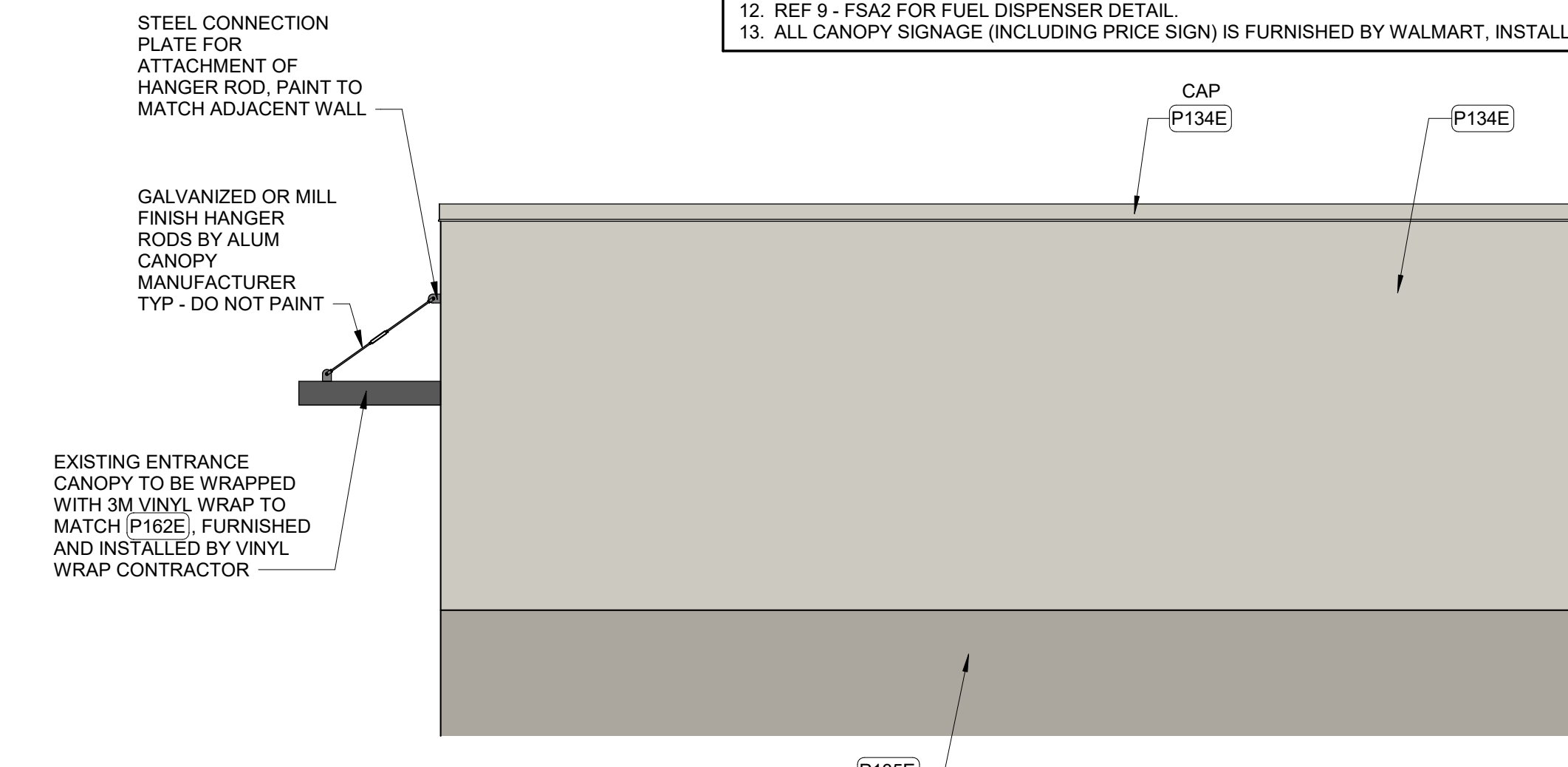
1. POWER WASH ALL EXTERIOR SURFACES. POWER WASH 100% OF EXTERIOR WALLS PRIOR TO PAINTING.
2. POWER WASH UNDERSIDE OF EXISTING METAL CANOPIES. REMOVE BIRD NESTS AND REPLACE DAMAGED OR MISSING PRE-MOLDED CLOSURE STRIPS.
3. PAINT EXTERIOR OF BUILDING AS SHOWN.
4. NOT USED.
5. MATCH SECURITY WALL PACK HOUSINGS TO MATCH ADJACENT WALL. REMOVE PAINT OVERSPRAY FROM LENSES.
6. NOT USED.
7. DO NOT PAINT WINDOW FRAMES OR STOREFRONT DOOR FRAMES.
8. REMOVE SEALANT AND BACKER MATERIAL FROM ALL BUILDING CONTACT JOINTS AND EXPANSION JOINTS. FILL AND SEAL JOINTS. REF SPEC 07000.
9. REF SHEET AS FOR SCHEDULE FINISH KEY AND GENERAL FINISH NOTES.
10. NOT USED.
11. REF 9 - F54A FOR FUEL DISPENSER DETAIL.
12. ALL CANOPY SIGNAGE (INCLUDING PRICE SIGN) IS FURNISHED BY WALMART, INSTALLED BY GC.



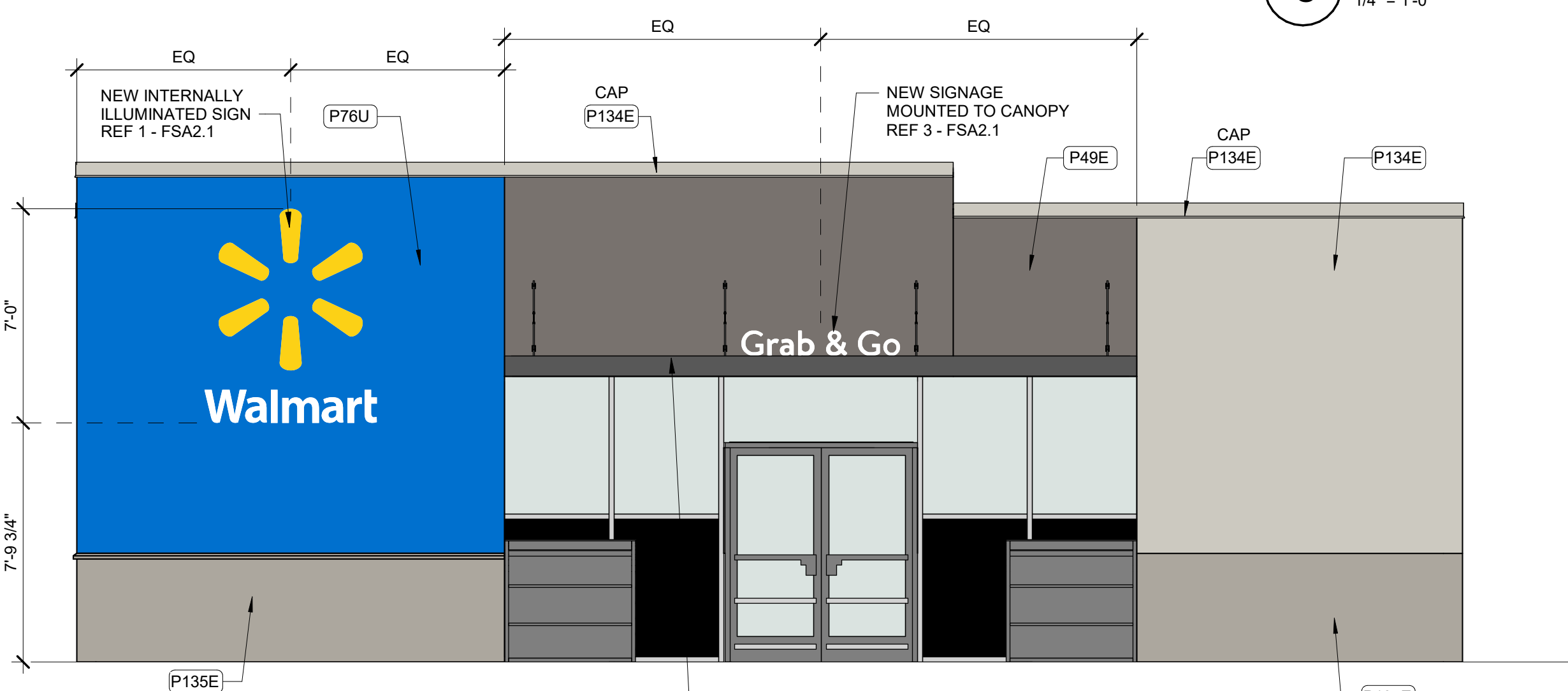
9 DIESEL AT ENDS (TYP) (SIM @ UNLEADED)
1/2" = 1'-0"



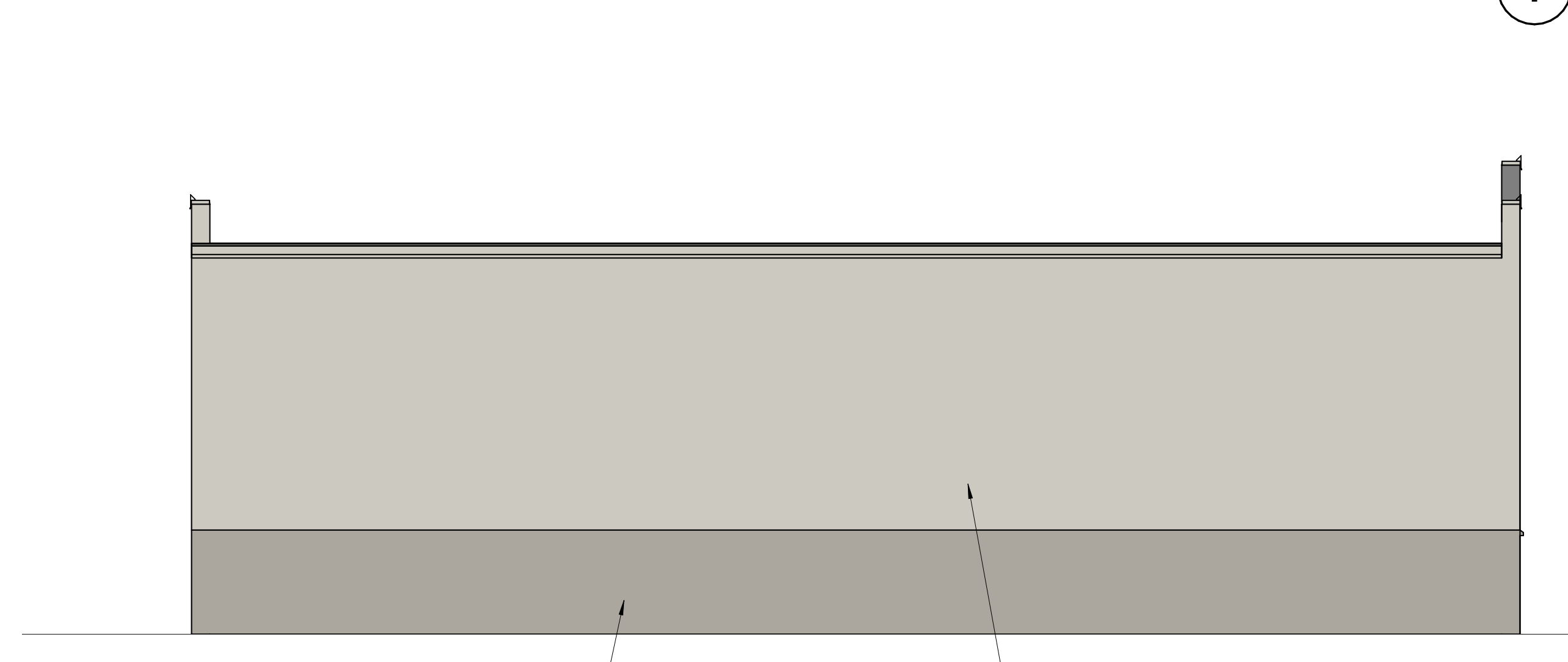
8 LEFT ELEVATION
1/4" = 1'-0"



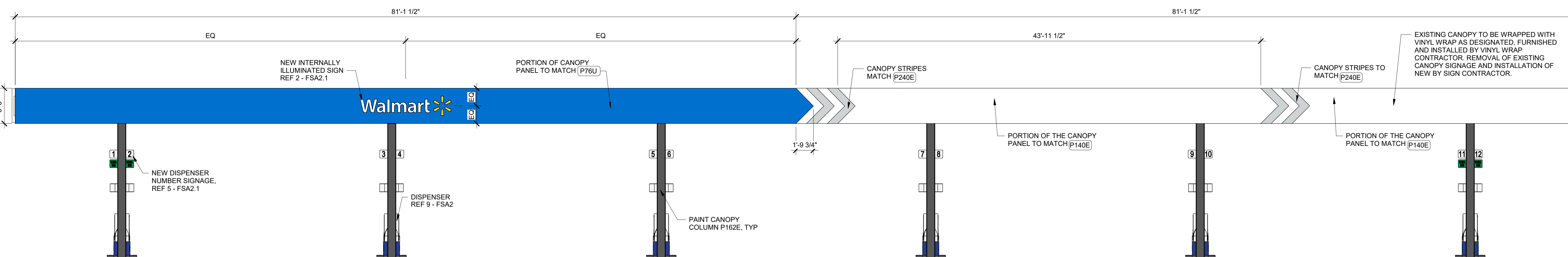
7 RIGHT ELEVATION



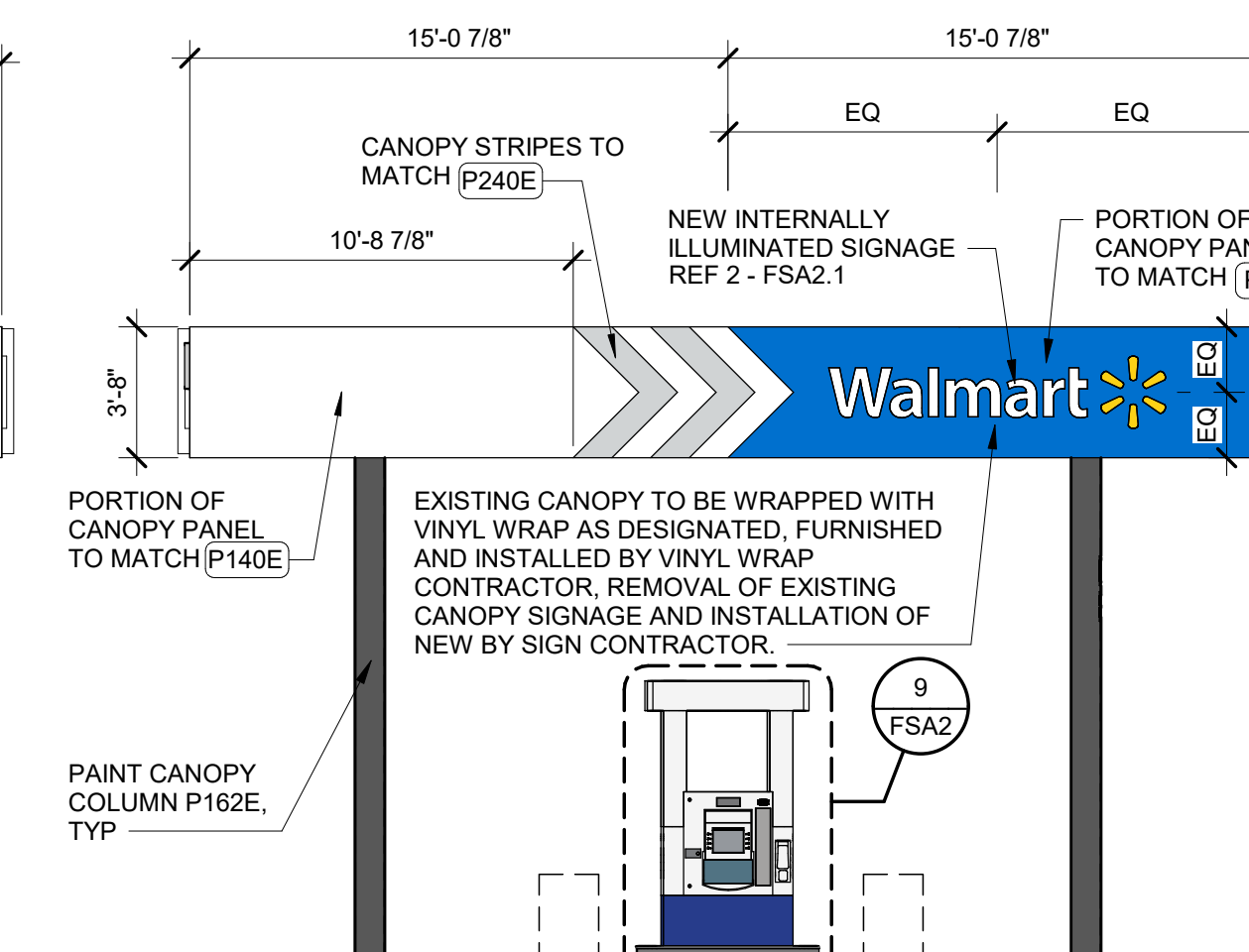
6 FRONT ELEVATION



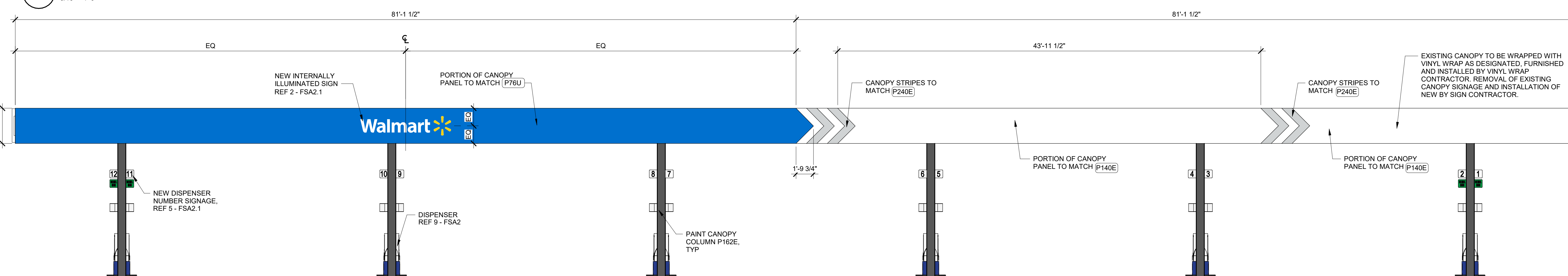
5 REAR ELEVATION



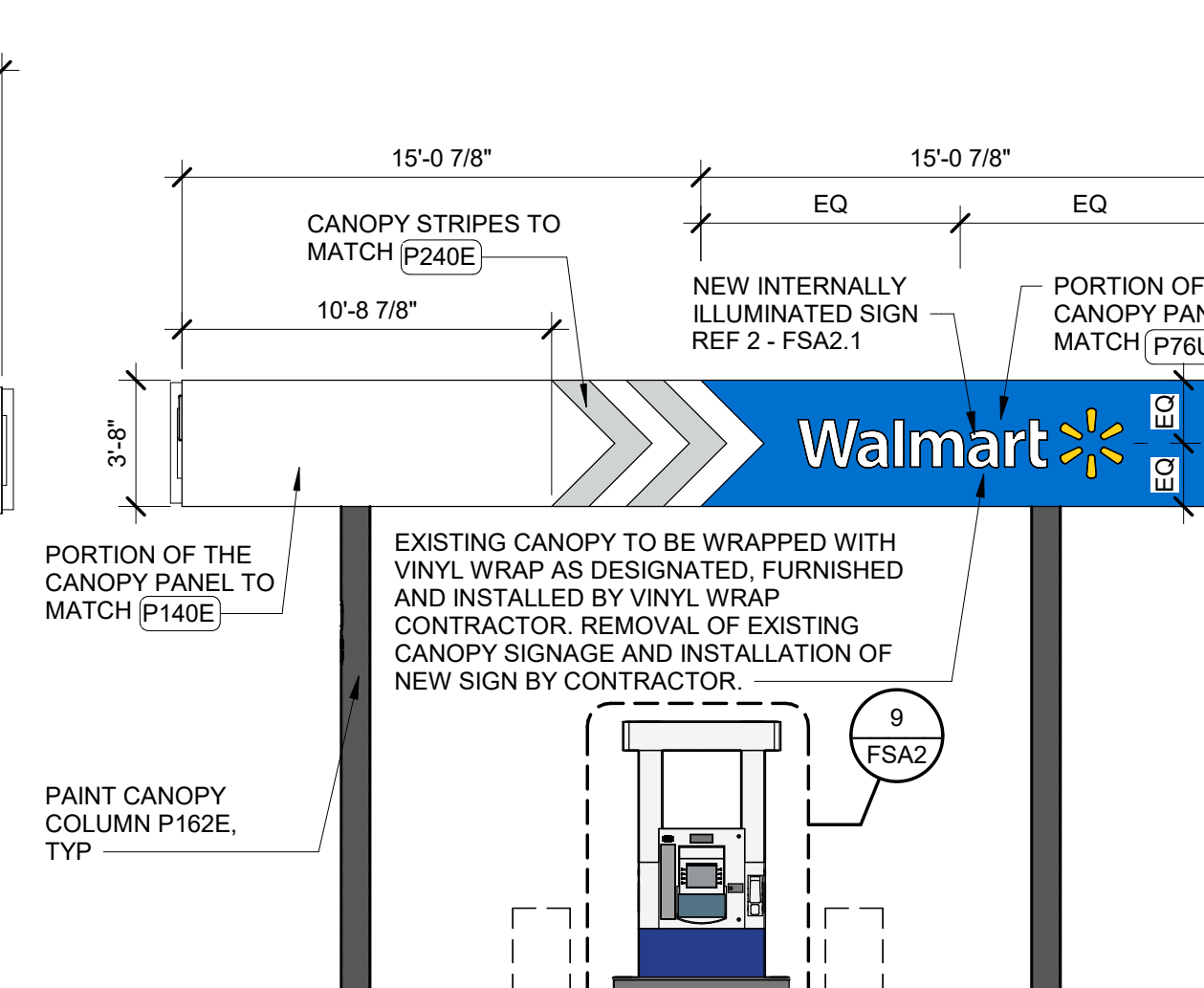
4 REAR CANOPY ELEVATION



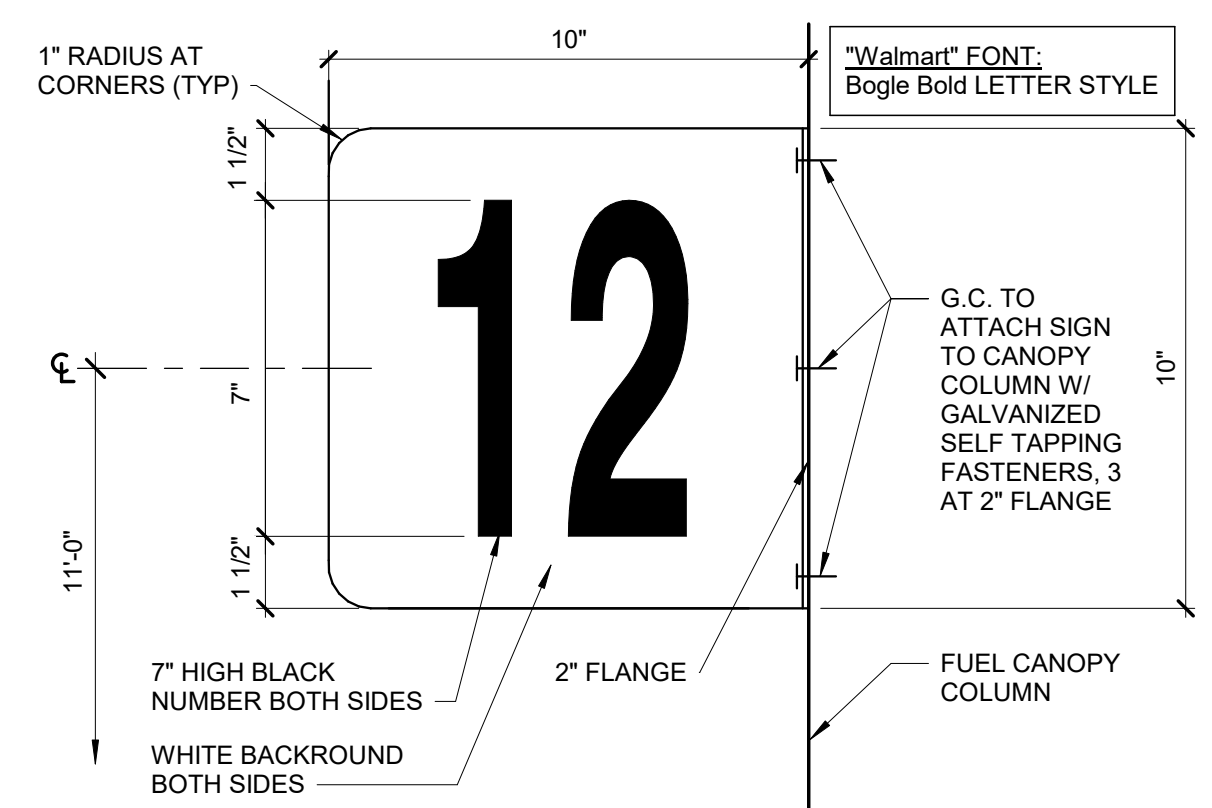
3 LEFT CANOPY ELEVATION



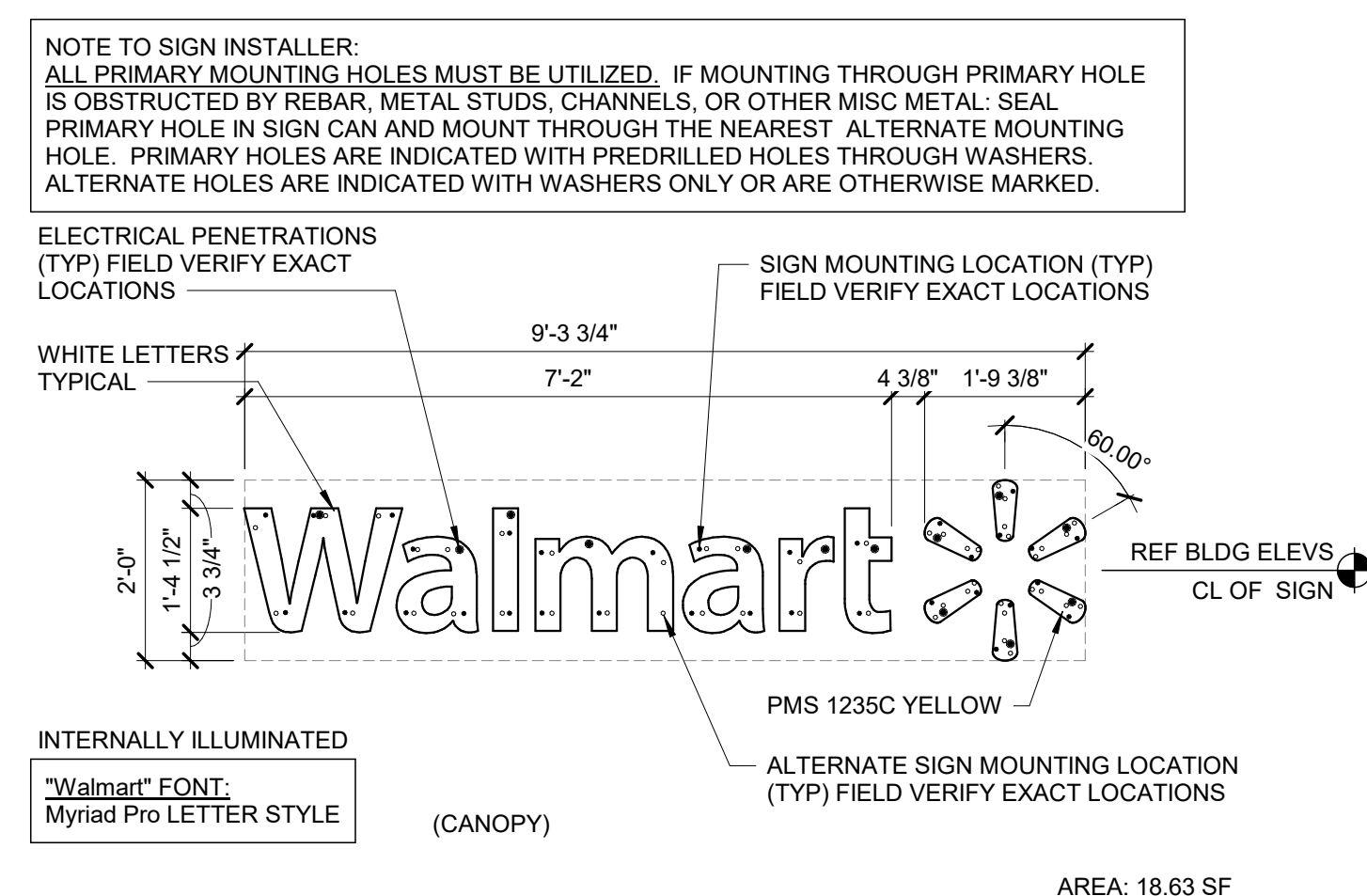
2 FRONT CANOPY ELEVATION



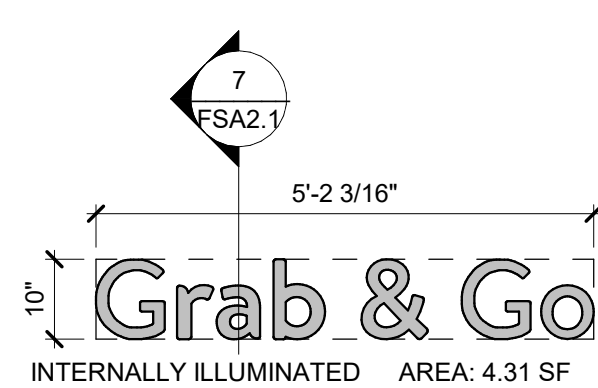
1 RIGHT CANOPY ELEVATION.



1 WALMART SIGN
1/2" = 1'-0"



2 WALMART SIGN
1/2" = 1'-0"



3 GRAB & GO SIGN

