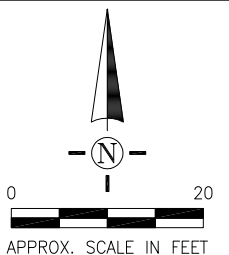
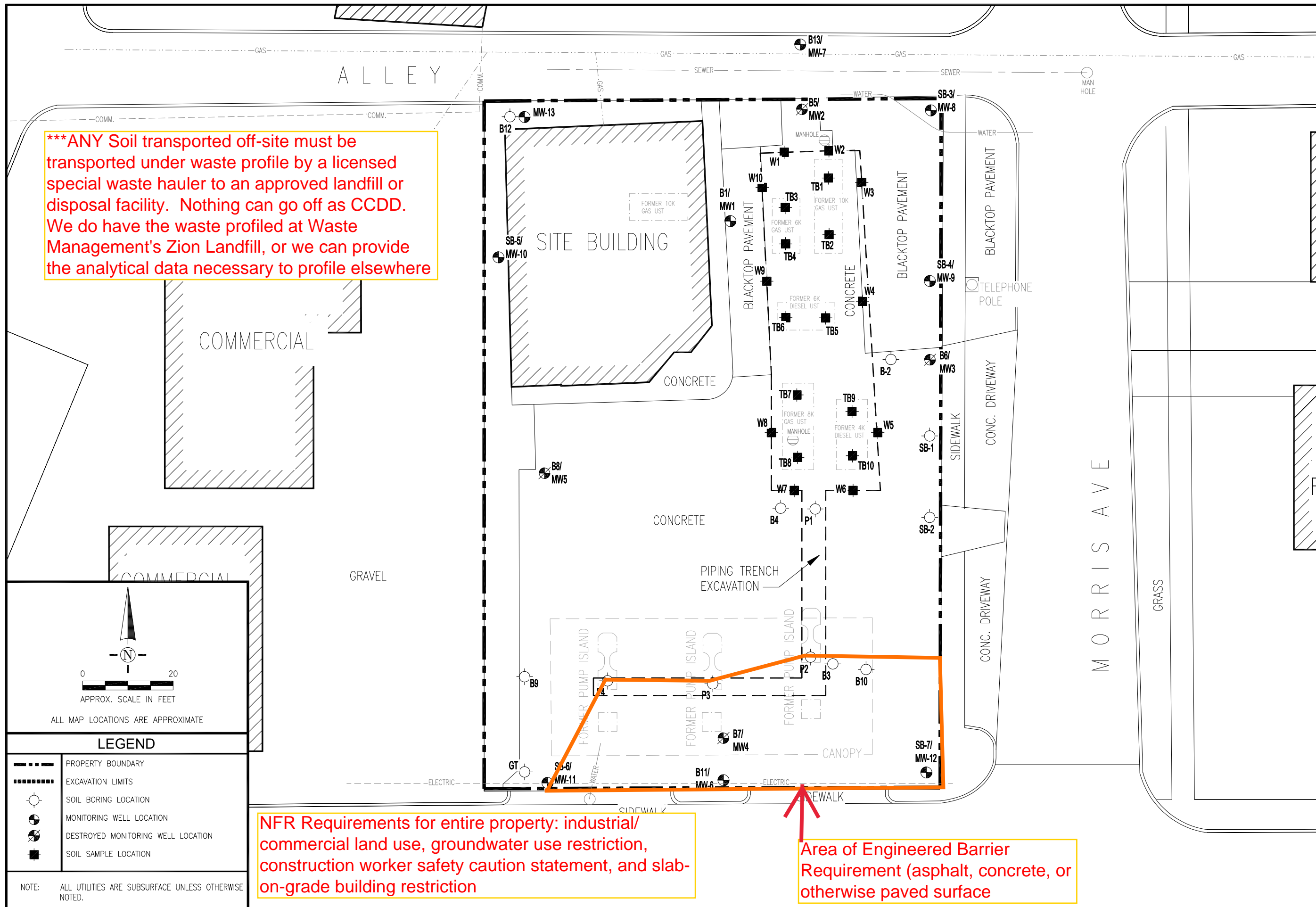


***ANY Soil transported off-site must be transported under waste profile by a licensed special waste hauler to an approved landfill or disposal facility. Nothing can go off as CCDD. We do have the waste profiled at Waste Management's Zion Landfill, or we can provide the analytical data necessary to profile elsewhere



ALL MAP LOCATIONS ARE APPROXIMATE

LEGEND

- PROPERTY BOUNDARY
- EXCAVATION LIMITS
- SOIL BORING LOCATION
- MONITORING WELL LOCATION
- ⊗ DESTROYED MONITORING WELL LOCATION
- SOIL SAMPLE LOCATION

NOTE: ALL UTILITIES ARE SUBSURFACE UNLESS OTHERWISE NOTED.

NFR Requirements for entire property: industrial/commercial land use, groundwater use restriction, construction worker safety caution statement, and slab-on-grade building restriction

Area of Engineered Barrier Requirement (asphalt, concrete, or otherwise paved surface)

TriCore Environmental, LLC
 2368 Corporate Lane, Suite 116
 Naperville, IL 60563
 (630) 520-9973



Village of Homewood
 2020 Chestnut
 Homewood, IL 60430

SITE MAP
 GUPTA, RAMESH
 2124 W. 1183rd STREET
 HOMEWOOD, IL 60430

DRAWN BY:	JO
APPROVED BY:	MIC
SCALE:	1" = 20'
DATE:	8/22/2022
DRAWING FILE:	MD21-156

FIGURE 2