

18148 Perth Avenue

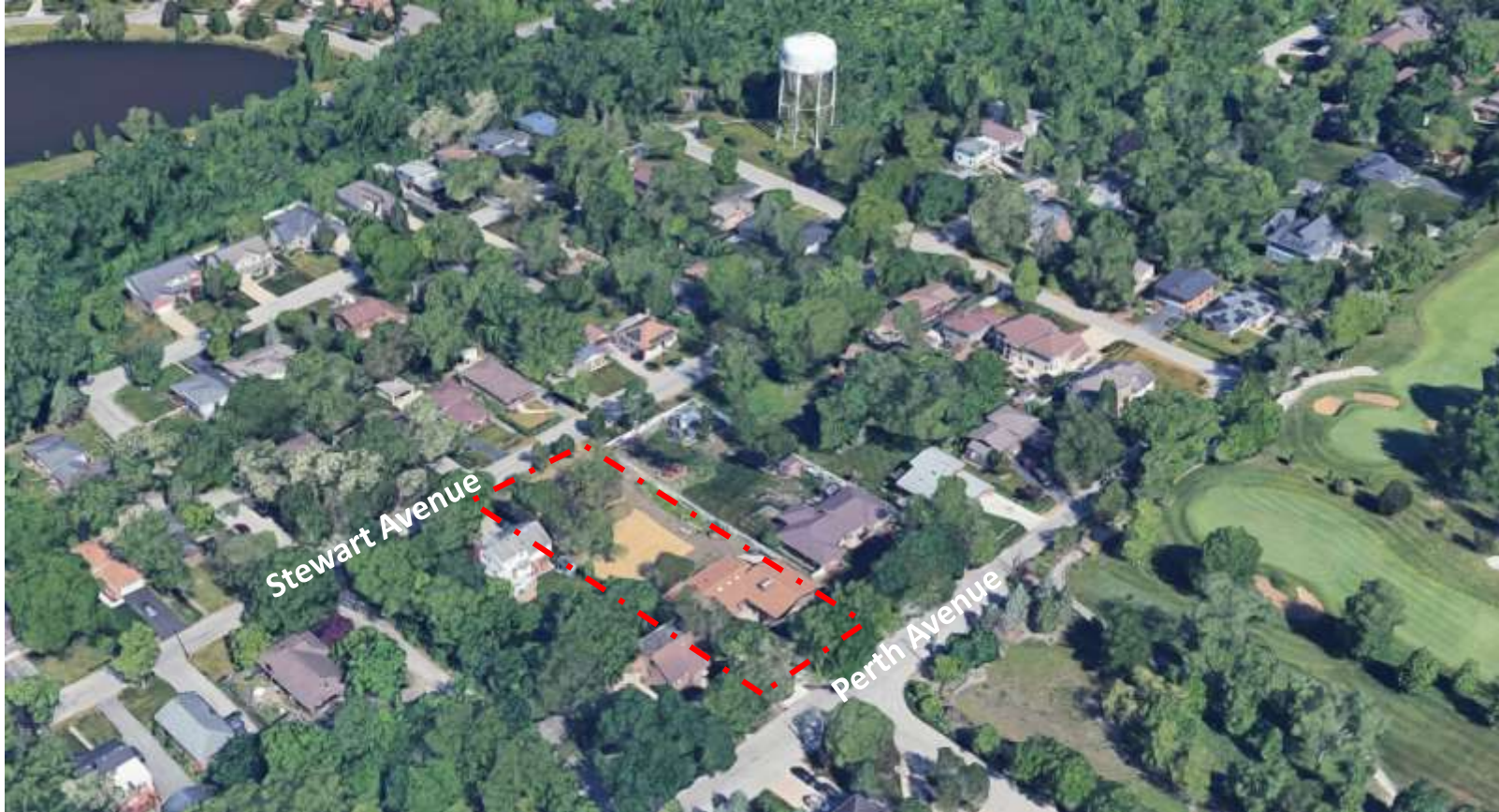
Driveway Variance

Context Aerial Image

PIN: 28-36-409-018 to 021; 036 to 040

Case 24-53 PZC

November 21, 2024



© 2023 Google, Maxar Technologies, USGS

Prepared by: Noah Schumert, Assistant Director of Community and Economic Development







PIN: 28-36-409-018 to 021; 036 to 040

Case 24-53 PZC

November 21, 2024

