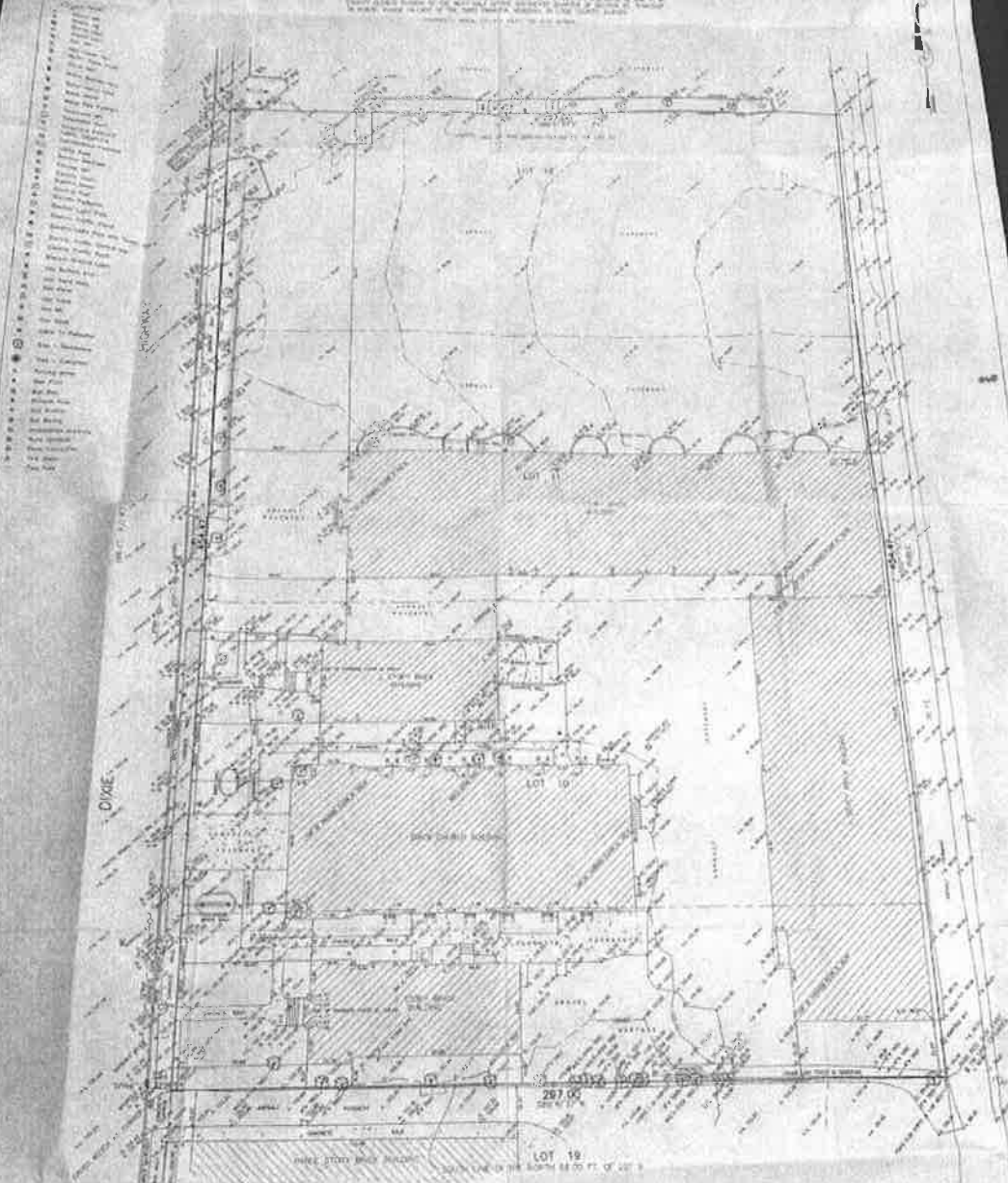


GREMLEY & BIEDERMANN

Plat of Survey



- 1/8" = 10' Scale
- 1/4" = 20' Scale
- 1/2" = 40' Scale
- 3/4" = 60' Scale
- 1" = 80' Scale
- 1 1/4" = 100' Scale
- 1 1/2" = 120' Scale
- 1 3/4" = 140' Scale
- 2" = 160' Scale
- 2 1/4" = 180' Scale
- 2 1/2" = 200' Scale
- 2 3/4" = 220' Scale
- 3" = 240' Scale
- 3 1/4" = 260' Scale
- 3 1/2" = 280' Scale
- 3 3/4" = 300' Scale
- 4" = 320' Scale
- 4 1/4" = 340' Scale
- 4 1/2" = 360' Scale
- 4 3/4" = 380' Scale
- 5" = 400' Scale
- 5 1/4" = 420' Scale
- 5 1/2" = 440' Scale
- 5 3/4" = 460' Scale
- 6" = 480' Scale
- 6 1/4" = 500' Scale
- 6 1/2" = 520' Scale
- 6 3/4" = 540' Scale
- 7" = 560' Scale
- 7 1/4" = 580' Scale
- 7 1/2" = 600' Scale
- 7 3/4" = 620' Scale
- 8" = 640' Scale
- 8 1/4" = 660' Scale
- 8 1/2" = 680' Scale
- 8 3/4" = 700' Scale
- 9" = 720' Scale
- 9 1/4" = 740' Scale
- 9 1/2" = 760' Scale
- 9 3/4" = 780' Scale
- 10" = 800' Scale

NOTE: BENCHMARKS, CROSS SECTION AT NORTHWEST CORNER OF SURVEY PLANNED BY E.L. BROWN, 1945. BENCHMARKS SUPPLIED BY THE VILLAGE OF HOMEROOD HAVE BEEN DESTROYED. COPIES OF RECORD & SET NOT AVAILABLE FOR THIS SURVEY. COPIES OF RECORD & SET NOT AVAILABLE FOR THIS SURVEY. COPIES OF RECORD & SET NOT AVAILABLE FOR THIS SURVEY. COPIES OF RECORD & SET NOT AVAILABLE FOR THIS SURVEY.

SUBJECT TO RECORD NO. 000 NO. 22-963-003 UTILITY WARNING: THE UNDERGROUND UTILITIES SHOWN HAVE BEEN LOCATED FROM SURVEY INFORMATION AND FIELD SURVEYS. THE SURVEYOR MAKES NO GUARANTEE THAT THE UNDERGROUND UTILITIES SHOWN CORRESPOND TO THE ACTUAL UTILITIES IN THE FIELD. OTHER UTILITIES MAY BE PRESENT AND THE SURVEYOR MAKES NO GUARANTEE THAT THE UNDERGROUND UTILITIES SHOWN ARE IN THE ACTUAL LOCATION SHOWN. THE SURVEYOR HAS NOT PREVIOUSLY LOCATED THE UNDERGROUND UTILITIES.

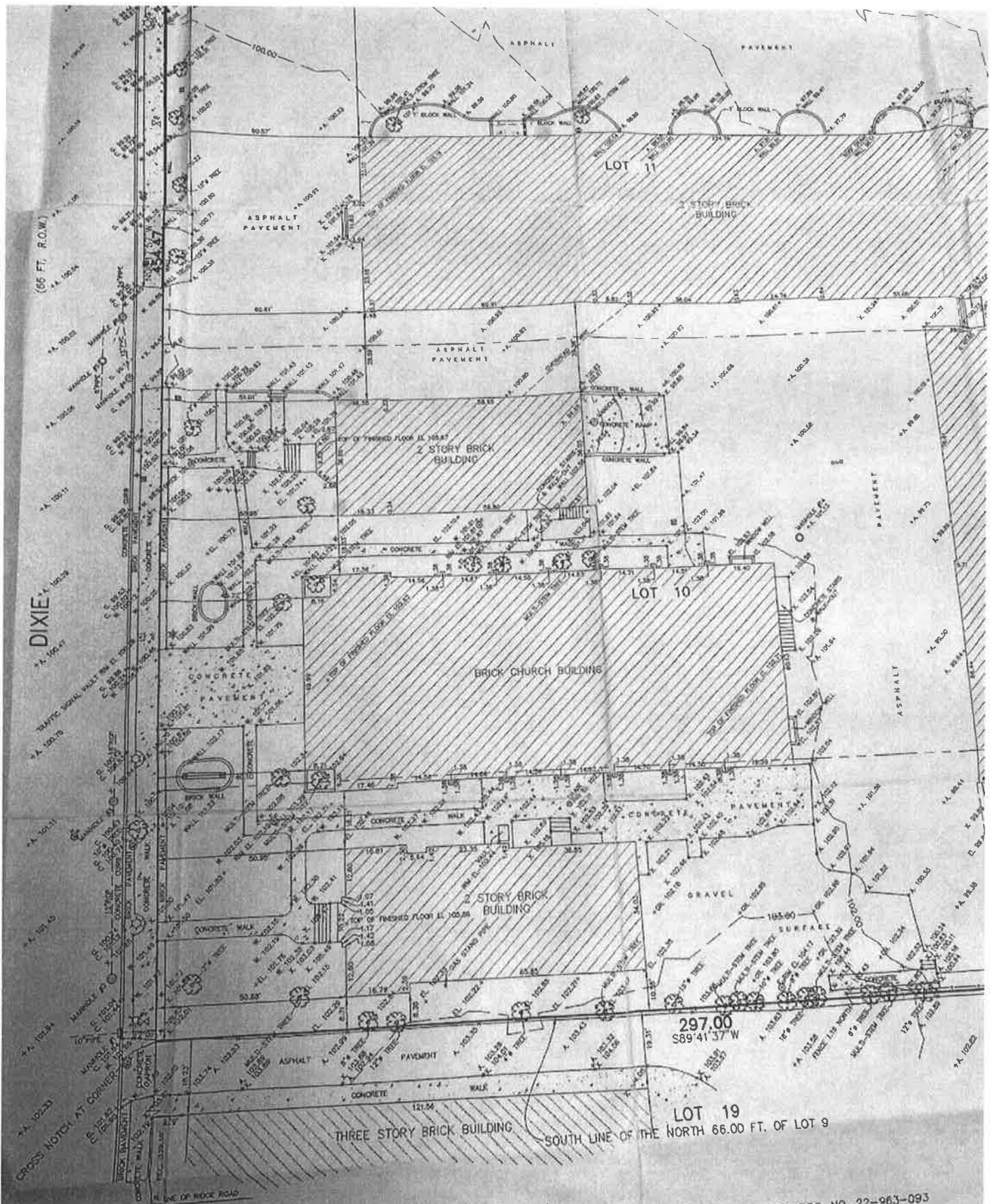
State of Illinois
County of Cook
We, GREMLEY & BIEDERMANN, do hereby certify that we have surveyed the above described property and that the same herein shown is a correct representation of said survey conducted in a conformity with the laws of the State of Illinois.
This measurement completed on June 22, 2005.
Signed on _____
By: *[Signature]*
Professional Surveyor License No. 22922
My License Expires December 31, 2006
This professional service conforms to the current Surveying and Mapping Act of Illinois.

2005-03516-001

GREMLEY & BIEDERMANN

191





NOTE:
 BENCHMARK: CROSS NOTCH AT NORTHWEST CORNER OF SURVEY
 ASSUMED ELEVATION = 100.00
 BENCHMARKS SUPPLIED BY THE VILLAGE OF HOMEWOOD HAVE BEEN DESTROYED
 Distances are marked in feet and decimal parts thereof. Compare all points
 BEFORE building by same and at once report any differences BEFORE
 work is done.

SUBJECT TO RIGHTS PER DOC. NO. 22-963-093
 UTILITY WARNING
 The underground utilities shown have been located from field information and existing drawings. The surveyor makes no guarantee that the underground utilities shown comprise all such utilities in the area, either in service or abandoned. The surveyor further warrants that the underground utilities shown are in the area shown and are located as shown.

CHECKED: [Signature] DRAWN: [Signature]

Exhibit B

STATE OF ILLINOIS
Office of the Secretary of State
I hereby certify that this is a true and
correct copy, consisting of *one*
pages, as taken from the original on file in
this office.



George H. Ryan

George H. Ryan
Secretary of State

DATED September 25, 1975

BY *Robert J. Hall*