

ISSUED FOR

DATE	DATE
1. SITE PLAN REVIEW	8/13/2024
2. ---	---
3. ---	---
4. ---	---
5. ---	---
6. ---	---
7. ---	---
8. ---	---
9. ---	---
10. ---	---
11. ---	---
12. ---	---

REVISIONS

ITEM	DATE
1. ---	---
2. ---	---
3. ---	---
4. ---	---
5. ---	---
6. ---	---

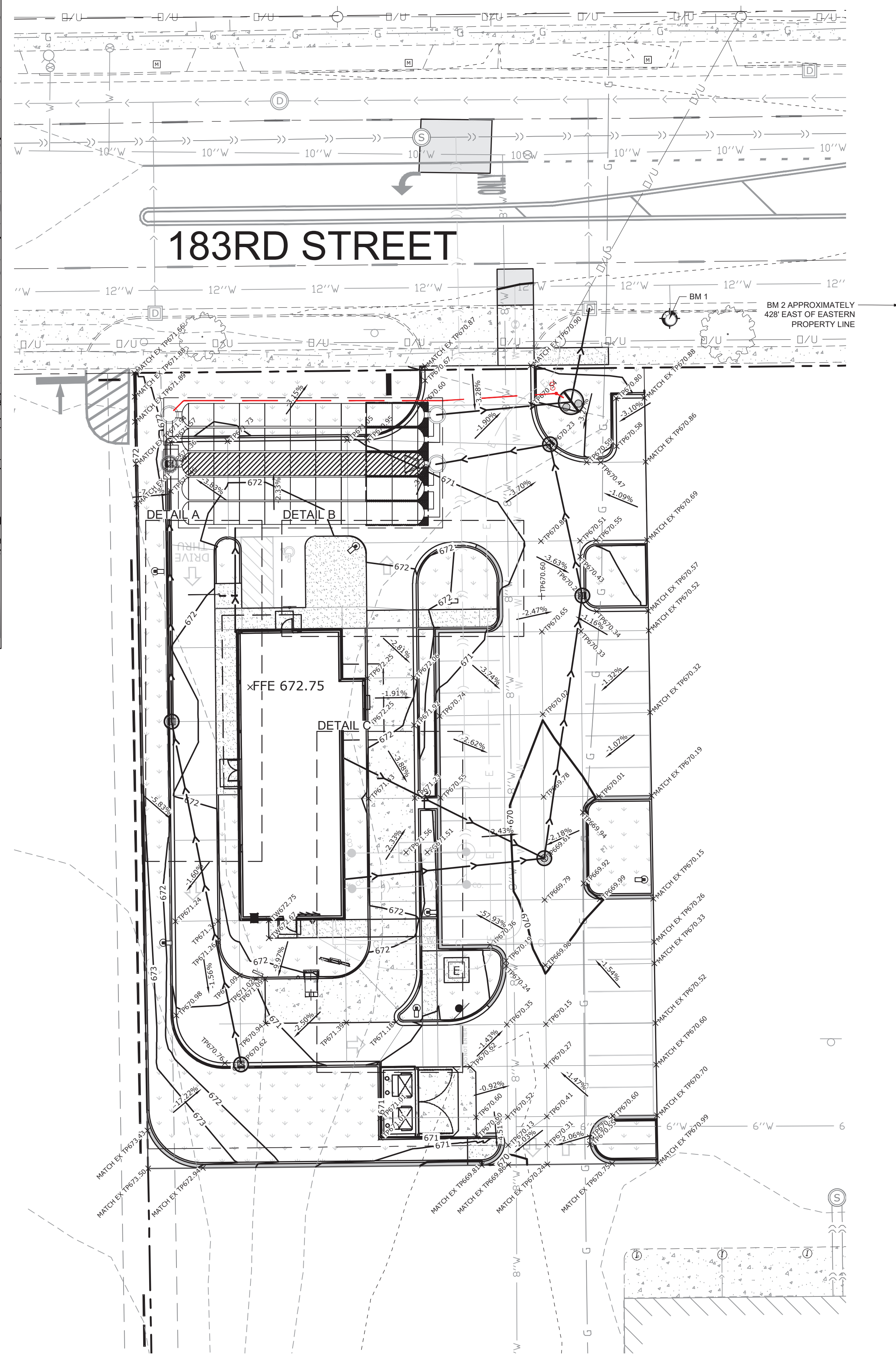
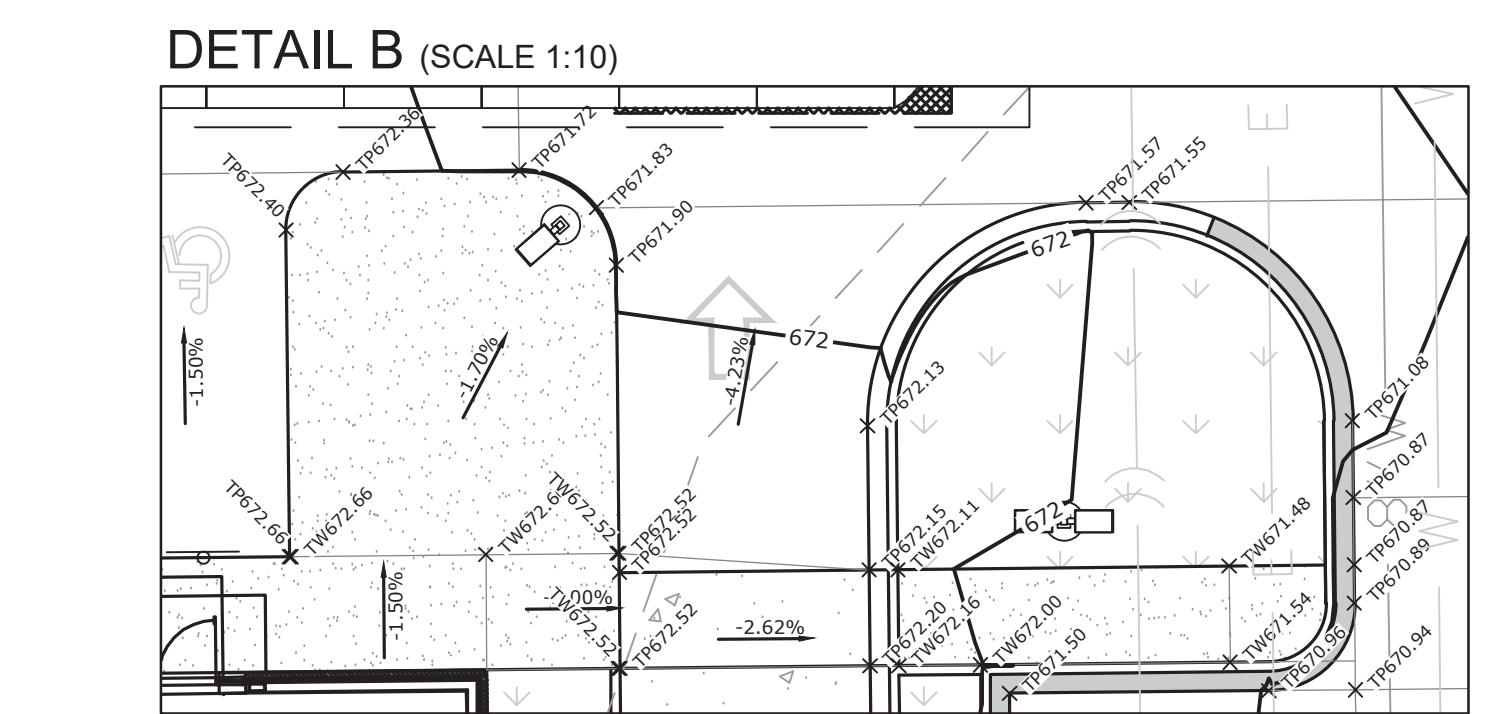
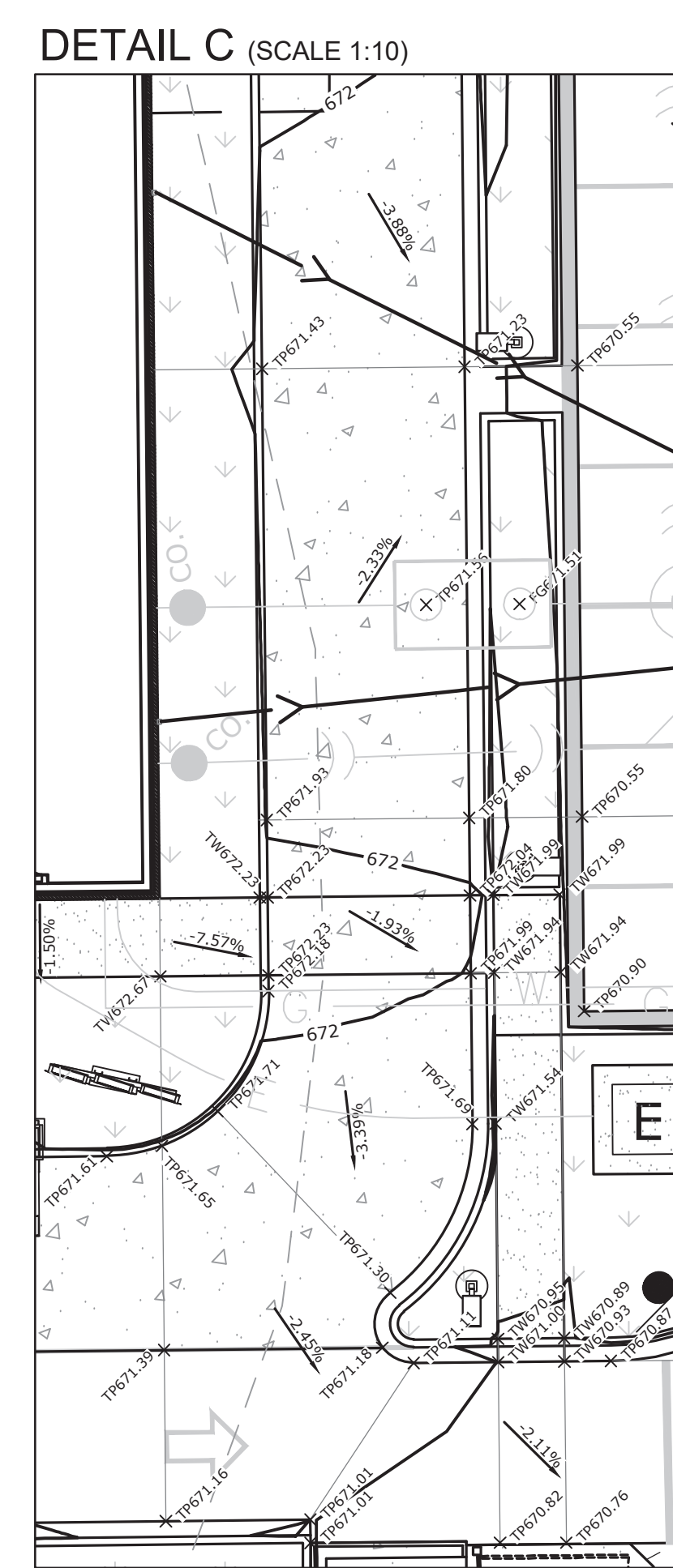
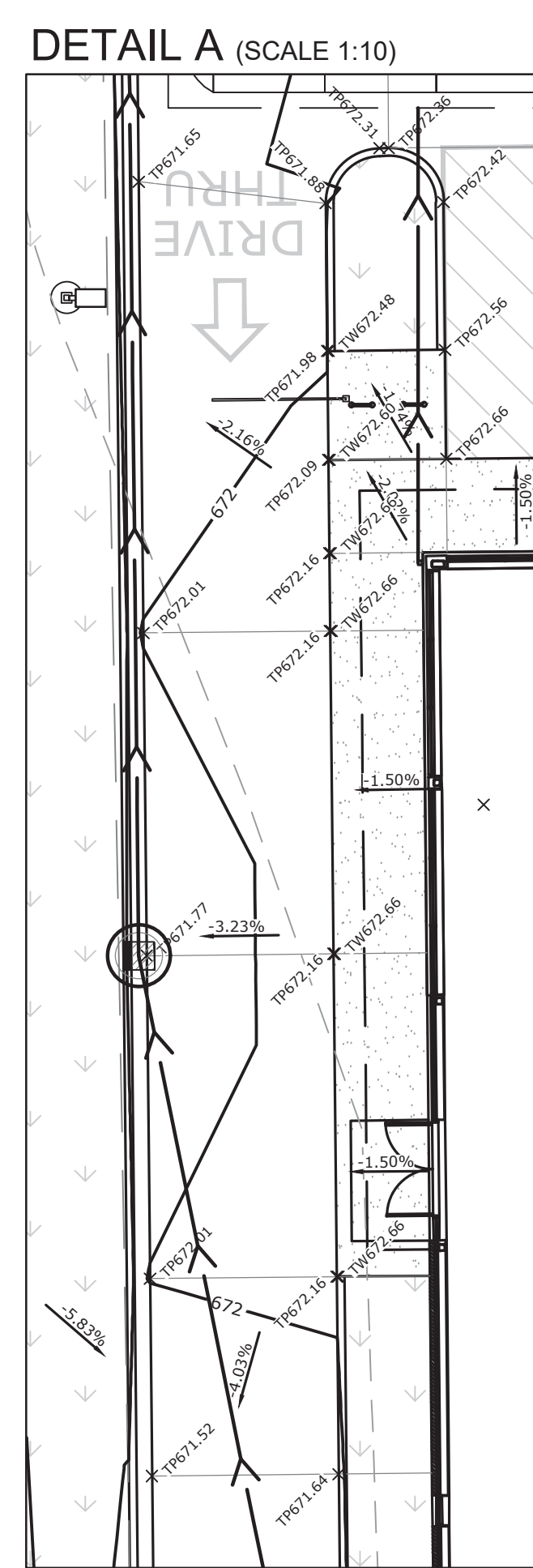
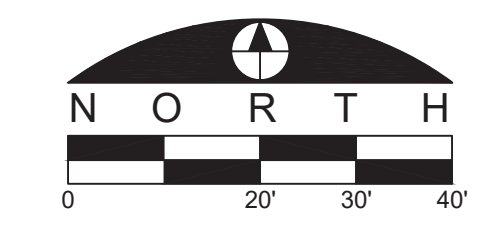
LEGEND

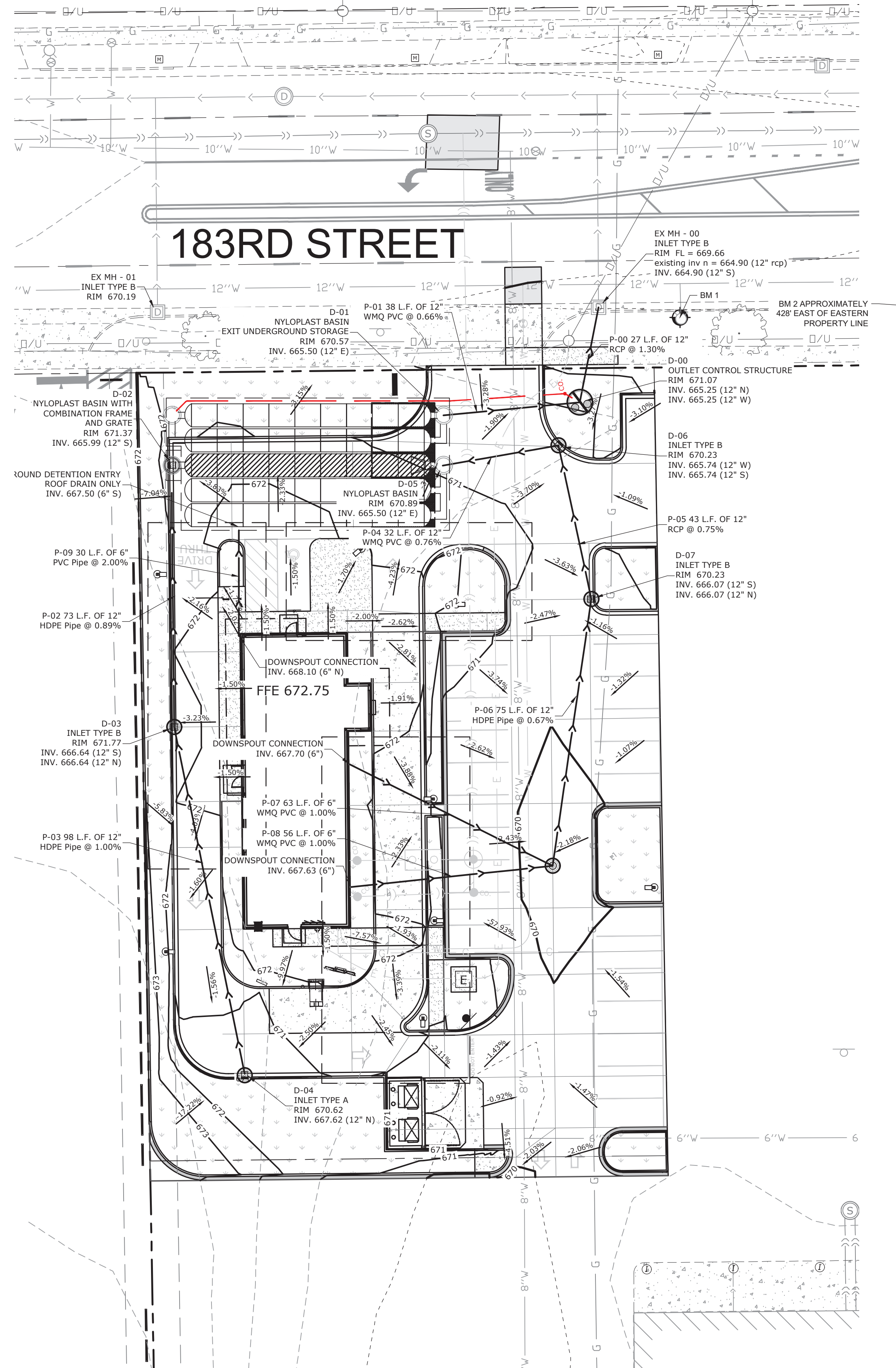
- PROPERTY LINE
- - - LOT LINE
- EXISTING RIGHT-OF-WAY
- ==== PROPOSED CURB AND GUTTER
- ==== PROPOSED REJECTING CURB AND GUTTER
- EXISTING CURB AND GUTTER
- PROPOSED STORM SEWER
- EXISTING STORM SEWER
- PROPOSED GRADE BREAK LINE
- PROPOSED CONTOUR LINE
- EXISTING CONTOUR LINE
- ⊙ ⊕ PROPOSED CATCH BASIN OR MANHOLE
- CO PROPOSED CLEANOUT
- 1.6% DIRECTION OF SHEET FLOW
- + TPO90.50 TOP OF WALK ELEVATION
- + TPO90.50 TOP OF PAVEMENT ELEVATION
- + TPO90.50 FINISHED GRADE ELEVATION
- ⊕ BENCHMARK
- ➔ EMERGENCY OVERLAND FLOW ROUTE

- GRADING NOTES**
- THE CONTRACTOR SHALL FIELD VERIFY THE ELEVATIONS OF THE BENCHMARKS PRIOR TO COMMENCING WORK. THE CONTRACTOR SHALL ALSO FIELD VERIFY LOCATION AND ELEVATION OF EXISTING PIPE INVERTS, FLOOR ELEVATIONS CURB OR PAVEMENT WHERE MATCHING INTO EXISTING WORK. THE CONTRACTOR SHALL FIELD VERIFY HORIZONTAL OR VERTICAL CONTROL BY REFERENCING SHOWN COORDINATES OR ELEVATIONS TO HORIZONTAL OR VERTICAL CONTROL POINTS PRIOR TO PROCEEDING WITH WORK.
 - ALL UNSURFACED AREAS ARE TO RECEIVE FOUR INCHES OF TOPSOIL AND SODDED (OR SEEDED WHERE NOTED) AND WATERED UNTIL A HEALTHY STAND OF GRASS IS OBTAINED.
 - ALL STORM SEWER PIPE IS TO BE REINFORCED CONCRETE CULVERT PIPE CLASS IV UNLESS OTHERWISE NOTED. WHERE HDPE OR PVC PIPE IS LISTED AS ACCEPTABLE MATERIALS, PVC SDR 35 HDPE DOUBLE WALL (ADS N-12), OR PVC SCHEDULE 40 MAY BE USED AT THE CONTRACTOR'S DISCRETION.
 - THE MAXIMUM SLOPE RATIO ON CUT/FILL SLOPES IS 3.5 HORIZONTAL TO 1 VERTICAL.
 - PROPERTY CORNERS SHALL BE CAREFULLY PROTECTED UNTIL THEY HAVE BEEN REFERENCED BY A PROFESSIONAL LAND SURVEYOR. PROPERTY MONUMENTS DISTURBED BY THE CONTRACTOR'S OPERATION SHALL BE REPLACED AT THE CONTRACTOR'S EXPENSE.
 - CONTRACTOR SHALL SET ALL CLEANOUT, MANHOLE AND INLET CASTINGS, FIRE HYDRANTS AND VALVE BOXES TO FINISHED GRADE.
 - ALL PROPOSED PAVED AREAS SHALL BE STRIPPED OF ALL TOPSOIL AND UNSUITABLE MATERIAL AND EXCAVATED OR FILLED TO WITHIN 0.10 FEET OF DESIGN SUBGRADE.
 - THE EARTHWORK CONTRACTOR IS RESPONSIBLE FOR MAINTAINING POSITIVE DRAINAGE AT THE CONCLUSION OF EACH WORKING DAY.
 - ROOF AND CANOPY DRAIN SHALL INCORPORATE BOOT PER DETAIL. 6" PVC PIPE SHALL EXTEND TO A MAIN AS SHOWN ON THE PLAN. POSITIVE DRAINAGE SHALL BE MAINTAINED TOWARD MAIN AT 1.0% MINIMUM SLOPE. 6" PVC CONNECTION TO BE MADE WITH INSERT-A-TEE OR ENGINEER APPROVED EQUIVALENT BETWEEN DISSIMILAR MATERIALS.

BENCHMARKS

DESCRIPTION	ELEVATION
BENCHMARK 1 SE BOLT ON FIRE HYDRANT	671.56
BENCHMARK 2 CUT SQUARE SW CORNER OF CONCRETE PAD	669.28





LEGEND

- PROPERTY LINE
- - - LOT LINE
- - - EXISTING RIGHT-OF-WAY
- ==== PROPOSED CURB AND GUTTER
- ==== PROPOSED REJECTING CURB AND GUTTER
- - - EXISTING CURB AND GUTTER
- PROPOSED STORM SEWER
- EXISTING STORM SEWER
- PROPOSED GRADE BREAK LINE
- PROPOSED CONTOUR LINE
- - - EXISTING CONTOUR LINE
- PROPOSED WATER SERVICE
- PROPOSED SANITARY SEWER
- PROPOSED GAS MAIN
- PROPOSED UNDERGROUND ELECTRIC SERVICE
- PROPOSED TELEPHONE SERVICE
- ⊙ EXISTING MANHOLE OR CATCH BASIN
- ⊙ PROPOSED CATCH BASIN OR MANHOLE
- PROPOSED CLEANOUT
- 1.6% DIRECTION OF SHEET FLOW

ARC DESIGN
RESOURCES INC.

5281 ZENITH PARKWAY
LOVES PARK, IL 61111
VOICE: (815) 484-4300
FAX: (815) 484-4303

www.arcdesign.com
Illinois Design Firm License No. 184-001334

PROJECT NAME
OWNER'S NAME

**RESTAURANT
WITH
DRIVE-THRU**

3047 183RD STREET
HOMEWOOD, IL
COOK COUNTY

ALRIG USA
RACHEL DELANEY
RACHEL@ALRIGUSA.COM
(248) 909-7072

CONSULTANTS

ISSUED FOR

ITEM	DATE
1. SITE PLAN REVIEW	8/13/2024
2. --	--
3. --	--
4. --	--
5. --	--
6. --	--
7. --	--
8. --	--
9. --	--
10. --	--
11. --	--
12. --	--

REVISIONS

ITEM	DATE
1. --	--
2. --	--
3. --	--
4. --	--
5. --	--
6. --	--

BENCHMARKS

DESCRIPTION	ELEVATION
BENCHMARK 1 SE BOLT ON FIRE HYDRANT	671.56
BENCHMARK 2 CUT SQUARE SW CORNER OF CONCRETE PAD	669.28

SHEET TITLE

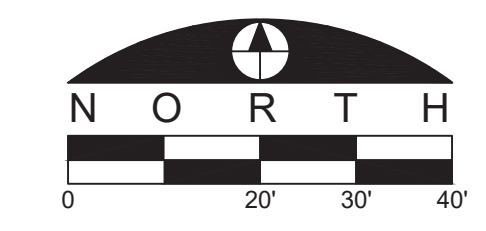
DRAINAGE PLAN

DRAWN	ARM
CHECKED	LND
PM	RCS

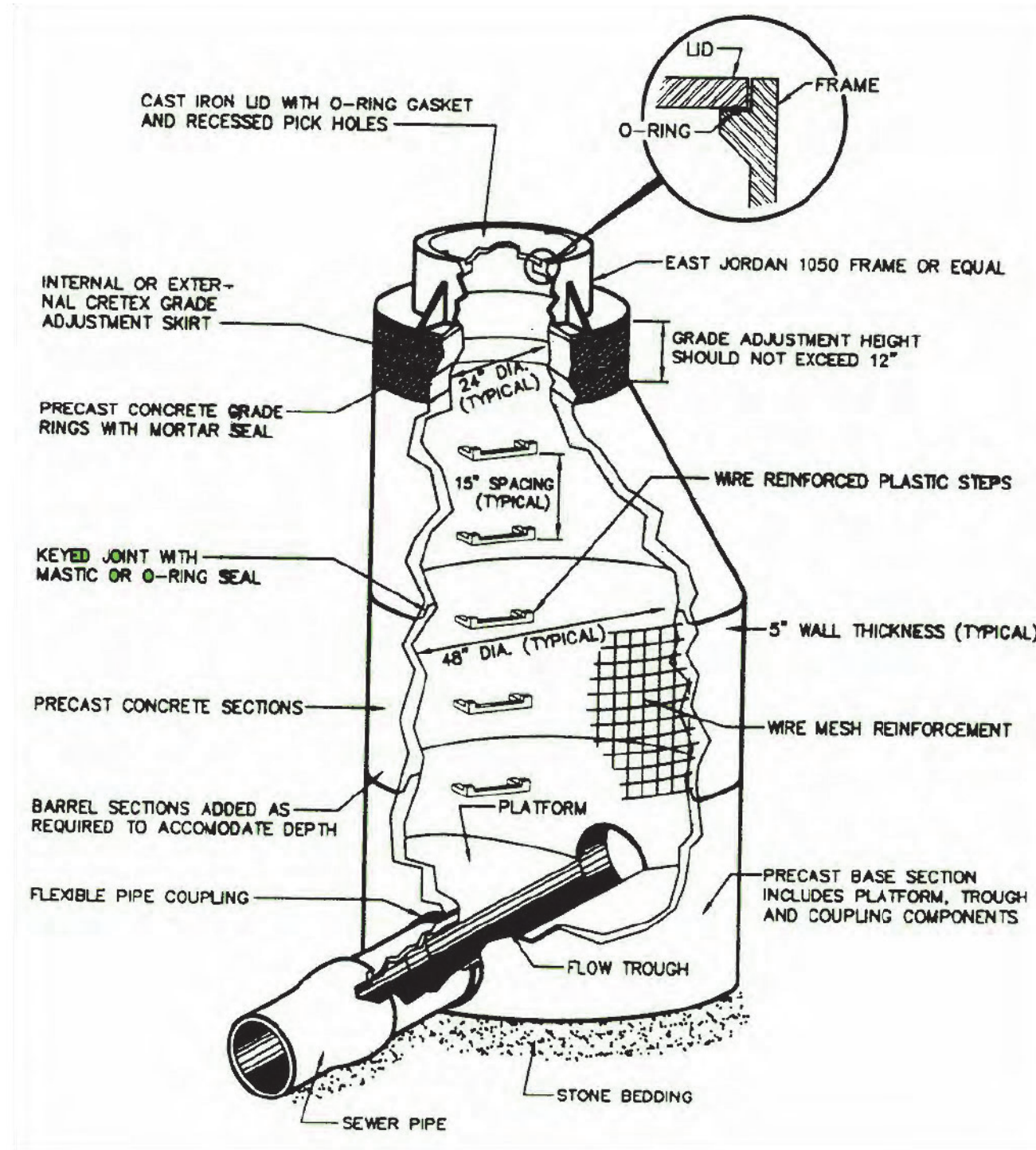
PROJECT NUMBER
SHEET NUMBER

23129

C-09



**Thorn Creek Basin Sanitary District
Standard Manhole Detail
(Not to Scale)**



SPECIFICATIONS

- Notes:
- 4" FPT Inlet/Outlet with 4" plain end adapters, single inlet and triple outlet.
 - Unit weight - w/ cast iron covers: 190 lbs. (For wet weight add 1,043 lbs.)
 - Maximum operating temperature: 150° F continuous
 - Capacities - Liquid: 125 gal.
Grease: 861 lbs. (118 gal.) @75 GPM
Solids: 31 gal.
 - For gravity drainage applications only.
 - Do not use for pressure applications.
 - Cover placement allows full access to tank for proper maintenance.
 - Vent not required unless per local code.
 - Engineered inlet and outlet diffusers with inspection ports are removable to inspect / clean piping.
 - Integral air relief / Anti-siphon / Sampling access.
 - Adjustable cover adapter provides up to 4" of additional height.
 - Designed for below-grade, above-grade, indoor and outdoor installations.
 - Safety Star® access restrictor built into cover adapter, prevents accidental entry to tank (450 lb rating).

ENGINEER SPECIFICATION GUIDE

Schier Great Basin™ grease interceptor model # GB-75 shall be lifetime guaranteed and made in USA of seamless, rotationally-molded polyethylene with minimum 3/8" uniform wall thickness. Interceptor shall be furnished for above or below-grade installation with adjustable cover adapter, Safety Star® access restrictor built into each cover adapter, and three outlet options. Interceptor shall be certified to ASME A112.14.3 (Type D) and CSA B481.1. Interceptor flow rate shall be 75 GPM. Interceptor grease capacity shall be 861 lbs. Cover shall provide water/gas-tight seal and have minimum 16,000 lbs. load capacity.

CERTIFIED PERFORMANCE

Great Basin™ hydromechanical grease interceptors are third party performance-tested and listed by IAPMO to ASME #A112.14.3 and CSA B481.1, grease interceptor standards and greatly exceed requirements for grease separation and storage. They are compliant to the Uniform Plumbing Code and the International Plumbing Code.

Type D certification does not require a flow control

SPECIFICATION SHEET

MODEL NUMBER: GB-75	PART NUMBER: 4045-007-02
DESCRIPTION: GB-75 GREASE INTERCEPTOR 75 GPM, 4" INLET/OUTLET, H-20 RATED CAST IRON COVER	
DWG BY: C. BUSENITZ	DATE: 4/14/2022
REV: -	ECO: -



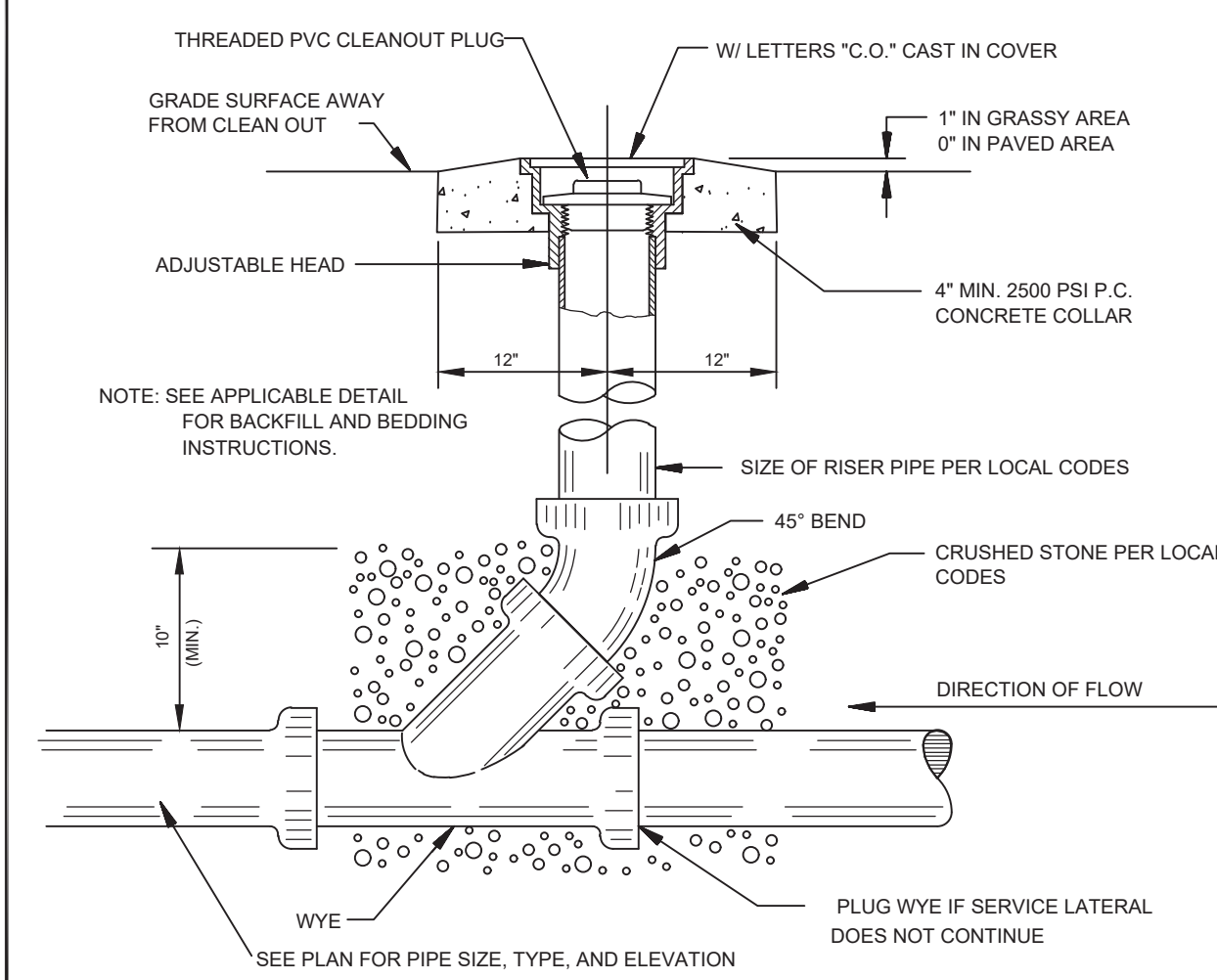
SCHIER
6455 Woodland Dr
Shawnee, KS 66218
Tel: 913-951-3300
Fax: 913-951-3399
schierproducts.com

GREASE TRAP SPECIFICATION

NOT TO SCALE

SEWER CLEANOUT DETAIL

NOT TO SCALE



ARC DESIGN
RESOURCES INC.

5281 ZENITH PARKWAY
LOVES PARK, IL 61111
VOICE: (815) 484-4300
FAX: (815) 484-4303

www.arcdesign.com
Illinois Design Firm License No. 184-001334

PROJECT NAME
OWNER'S NAME

RESTAURANT WITH DRIVE-THRU

3047 183RD STREET
HOMEWOOD, IL
COOK COUNTY

ALRIG USA
RACHEL DELANEY
RACHEL@ALRIGUSA.COM
(248) 909-7072

CONSULTANTS

ISSUED FOR

ITEM	DATE
1. SITE PLAN REVIEW	8/13/2024
2. ---	---
3. ---	---
4. ---	---
5. ---	---
6. ---	---
7. ---	---
8. ---	---
9. ---	---
10. ---	---
11. ---	---
12. ---	---

REVISIONS

ITEM	DATE
1. ---	---
2. ---	---
3. ---	---
4. ---	---
5. ---	---
6. ---	---

SHEET TITLE

SEWER DETAILS

DRAWN	ARM
CHECKED	LND
PM	RCS

PROJECT NUMBER
SHEET NUMBER

23129

C-10

PROJECT NAME
OWNER'S NAME

**RESTAURANT
WITH
DRIVE-THRU**

3047 183RD STREET
HOMEWOOD, IL
COOK COUNTY

ALRIG USA
RACHEL DELANEY
RACHEL@ALRIGUSA.COM
(248) 909-7072

CONSULTANTS

ISSUED FOR	DATE
1. SITE PLAN REVIEW	8/13/2024
2. ---	---
3. ---	---
4. ---	---
5. ---	---
6. ---	---
7. ---	---
8. ---	---
9. ---	---
10. ---	---
11. ---	---
12. ---	---

REVISIONS	DATE
1. ---	---
2. ---	---
3. ---	---
4. ---	---
5. ---	---
6. ---	---

SHEET TITLE

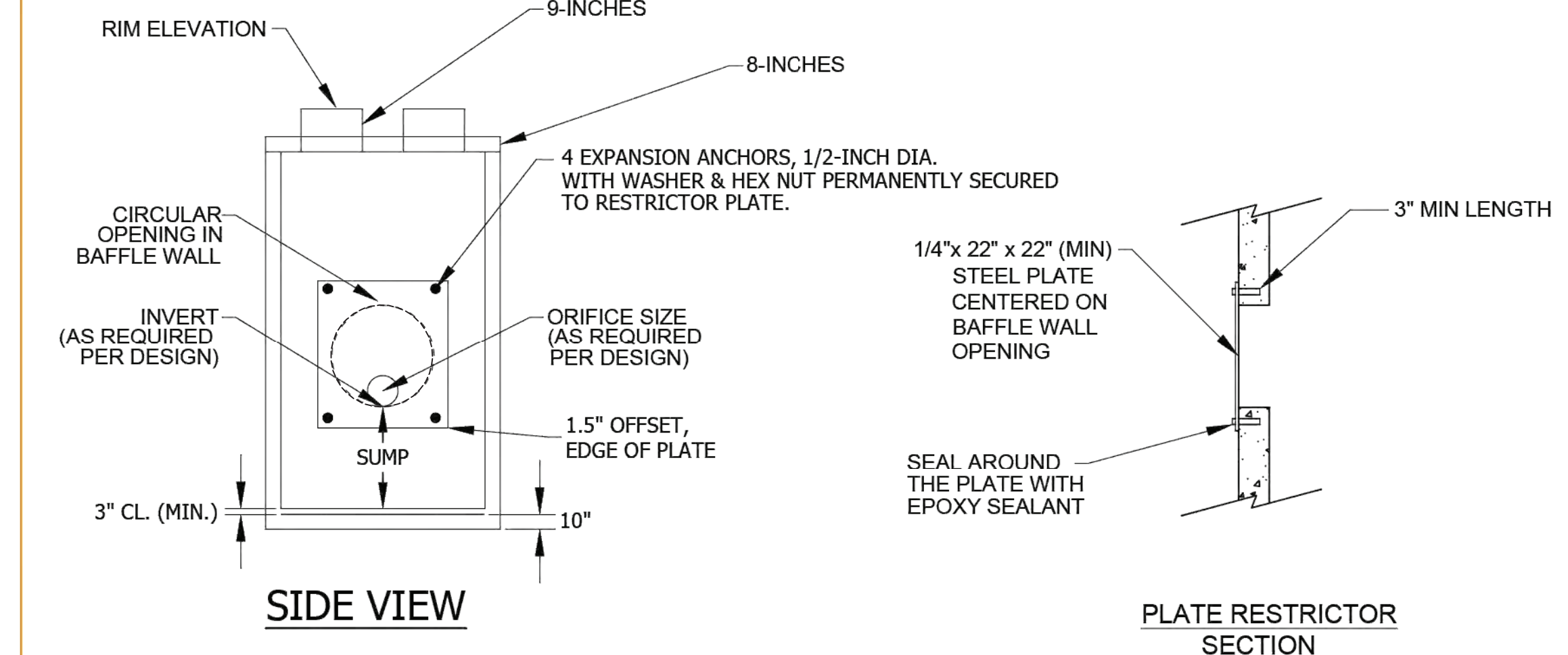
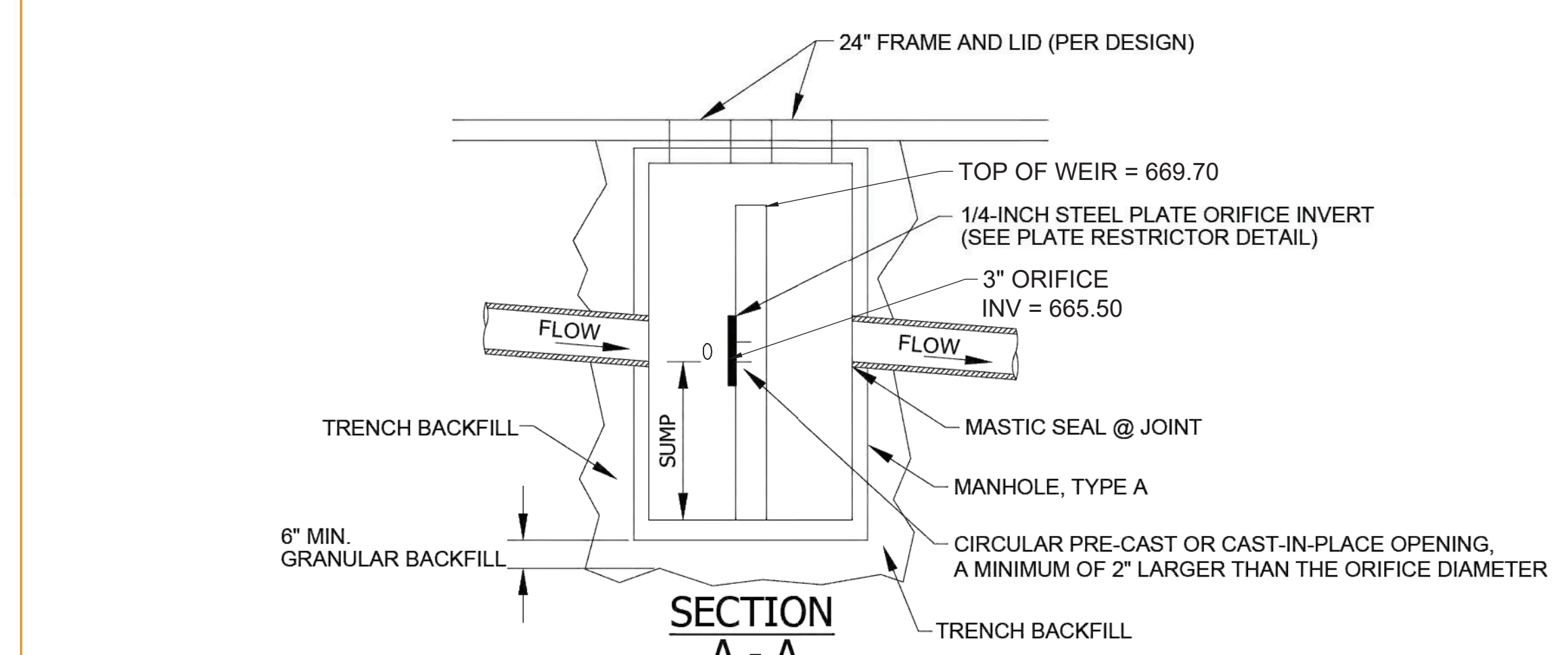
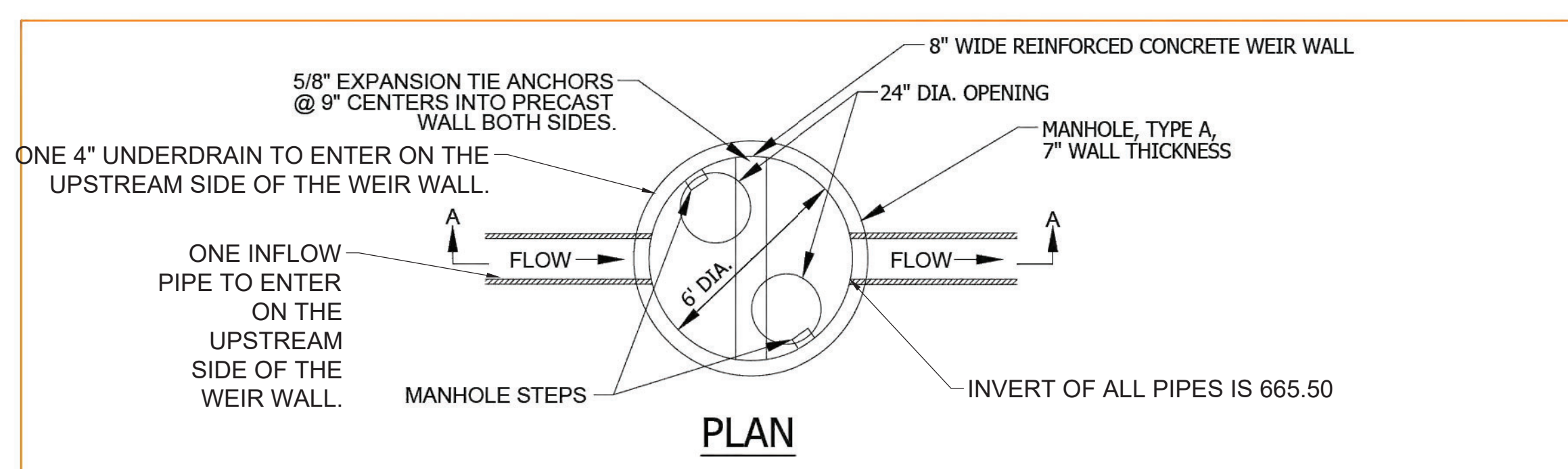
SEWER DETAILS

DRAWN: ARM
CHECKED: LND
PM: RCS

PROJECT NUMBER
SHEET NUMBER

23129

C-11



- NOTES:
- STRUCTURE AND BAFFLE WALL FABRICATED USING REINFORCED PORTLAND CEMENT CONCRETE.
 - RESTRICTORS LESS THAN 4" IN DIAMETER PROVIDE HOOD/SNOOT OR WIRE MESH
 - BAFFLE WALL PERMANENTLY INSTALLED AS PRECAST OR CAST-IN-PLACE
 - PIPE TO STRUCTURE CONNECTIONS SHALL BE ASTM C923 IN COMBINED SEWER AREAS.
 - CAUTION: 1/4-INCH STEEL PLATE DIMENSIONS TO BEST FIT PROPOSED STRUCTURE.
 - ANCHOR EMBEDMENT SHALL BE 3-INCHES MINIMUM.
 - SEE STRUCTURAL PLANS FOR REINFORCEMENT DETAILS.

TECHNICAL GUIDANCE MANUAL		10/04/2019
TYPICAL OUTLET CONTROL STRUCTURE (WALL) DETAIL		STD. DWG. NO. 25
		PAGE NO. 30

TECHNICAL GUIDANCE MANUAL

WATER AND SEWER SEPARATION REQUIREMENTS (PER IEPA)

7/1/15

STD. DWG. NO. 41

PAGE NO. 42

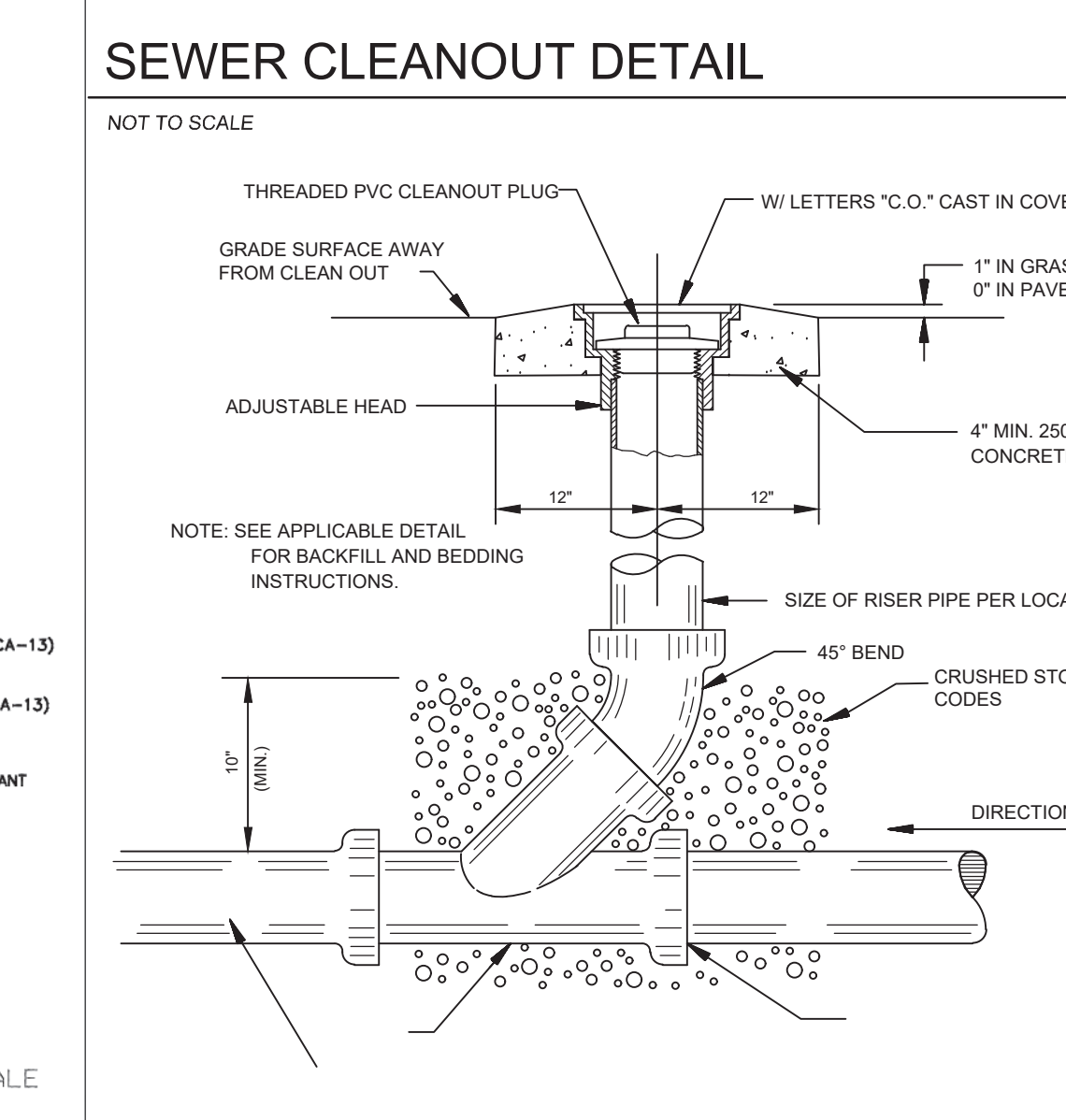
TECHNICAL GUIDANCE MANUAL

RIGID AND FLEXIBLE PIPE INSTALLATION DETAIL

7/1/15

STD. DWG. NO. 34

PAGE NO. 35



ALTERNATE MATERIALS FOR WALLS	T
BRICK MASONRY	8 (200)
CAST-IN-PLACE CONCRETE	6 (150)
CONCRETE MASONRY UNIT	5 (125)
PRECAST REINFORCED CONCRETE SECTION	3 (75)

GENERAL NOTES
Bottom slabs shall be reinforced with a minimum of 0.24 sq. in./ft. (210 sq. mm/m) in both directions with a maximum spacing of 10 (250).
Bottom slabs may be connected to the riser as determined by the fabricator; however, only a single row of reinforcement around the perimeter may be utilized.
All dimensions are in inches (millimeters) unless otherwise shown.

DATE	REVISIONS
1-1-14	Increased height to 32 (1800) maximum.
1-1-11	Detailed rein. in slabs. Added max. limit to height. Added general notes.

INLET - TYPE A
STANDARD 602301-04

ALTERNATE MATERIALS FOR WALLS	T (min.)
Concrete Masonry Unit	5 (125)
Brick Masonry	8 (200)
Precast Reinforced Concrete Section	3 (75)
Cast-in-Place Concrete	6 (150)

GENERAL NOTES
Bottom slabs shall be reinforced with a minimum of 0.20 sq. in./ft. (420 sq. mm/m) in both directions with a maximum spacing of 12 (300).
Bottom slabs may be connected to the riser as determined by the fabricator; however, only a single row of reinforcement around the perimeter may be utilized.
See Standard 602601 for optional Precast Reinforced Concrete Flat Slab Top.
All dimensions are in inches (millimeters) unless otherwise shown.

DATE	REVISIONS
1-1-11	Detailed rein. in slabs. Added max. limit to height. Revised general notes.
1-1-09	Switched units to English (metric).

INLET - TYPE B
STANDARD 602306-03

FLAT SLAB TOP JOINT CONFIGURATIONS FOR D = 36 (900) AND D = 4'-0" (1.22 m)
(Shown at access hole)

SECTION THRU FLAT SLAB TOP FOR D = 36 (900) AND D = 4'-0" (1.22 m)

PLAN - FLAT SLAB TOP FOR D = 36 (900)
(Showing layout of reinforcement bars and c bars)

PLAN - FLAT SLAB TOP FOR D = 36 (900)
(Showing layout of welded wire reinforcement and c bars)

GENERAL NOTES
The flat slab top may be used in lieu of the tapered tops shown on Standards 602001, 602016, or 602036 at the option of the Contractor or when field conditions prohibit the use of tapered tops.
Lifting holes shall be located in the sections as per the manufacturer's recommendations.
All dimensions are in inches (millimeters) unless otherwise shown.

DATE	REVISIONS
1-1-19	Expanded / refined reinforcement options.
1-1-18	Revised for compliance with LRFD.

PRECAST REINFORCED CONCRETE FLAT SLAB TOP
(Sheet 1 of 2)
STANDARD 602601-06

FLAT SLAB TOP REINFORCEMENT FOR D = 36 (900)

Location	WWR (each direction)	Rebar
Top	A _s (min.) Spacing (max.)	A _s (min.) Spacing (max.) Bar Size
Bottom	* 0.60 sq. in./ft. (150)	See plan view for rebar orientation and spacing and this table for bar size (#13)
Mat	(1270 sq. mm/m)	

FLAT SLAB TOP REINFORCEMENT FOR D = 4'-0" (1.22 m)

Location	WWR (each direction)	Rebar
Bottom	* 0.62 sq. in./ft. (150)	See plan view for rebar orientation and spacing and this table for bar size (#16)
Mat	(1312 sq. mm/m)	

FLAT SLAB TOP REINFORCEMENT FOR D = 5'-0" (1.52 m)

Location	WWR (each direction)	Rebar (each direction except as noted)
Top	0.11 sq. in./ft. (233 sq. mm/m)	18 0.11 sq. in./ft. (233 sq. mm/m) #3 or #4 (410) (#13)
Mat	* 0.40 sq. in./ft. (150)	See plan view for rebar orientation and spacing and this table for bar size (#13)
Bottom	(847 sq. mm/m)	

* Only one layer of WWR permitted to avoid congestion.

DATE	REVISIONS
1-1-19	Expanded / refined reinforcement options.
1-1-18	Revised for compliance with LRFD.

PRECAST REINFORCED CONCRETE FLAT SLAB TOP
(Sheet 2 of 2)
STANDARD 602601-06

ARC DESIGN RESOURCES INC.
5281 ZENITH PARKWAY
LOVES PARK, IL 61111
VOICE: (815) 484-4300
FAX: (815) 484-4303
www.arcdesign.com
Illinois Design Firm License No. 184-001334

PROJECT NAME
OWNER'S NAME

RESTAURANT WITH DRIVE-THRU
3047 183RD STREET
HOMEWOOD, IL
COOK COUNTY
ALRIG USA
RACHEL DELANEY
RACHEL@ALRIGUSA.COM
(248) 909-7072

CONSULTANTS

ISSUED FOR

ITEM	DATE
1. SITE PLAN REVIEW	8/13/2024
2. ---	---
3. ---	---
4. ---	---
5. ---	---
6. ---	---
7. ---	---
8. ---	---
9. ---	---
10. ---	---
11. ---	---
12. ---	---

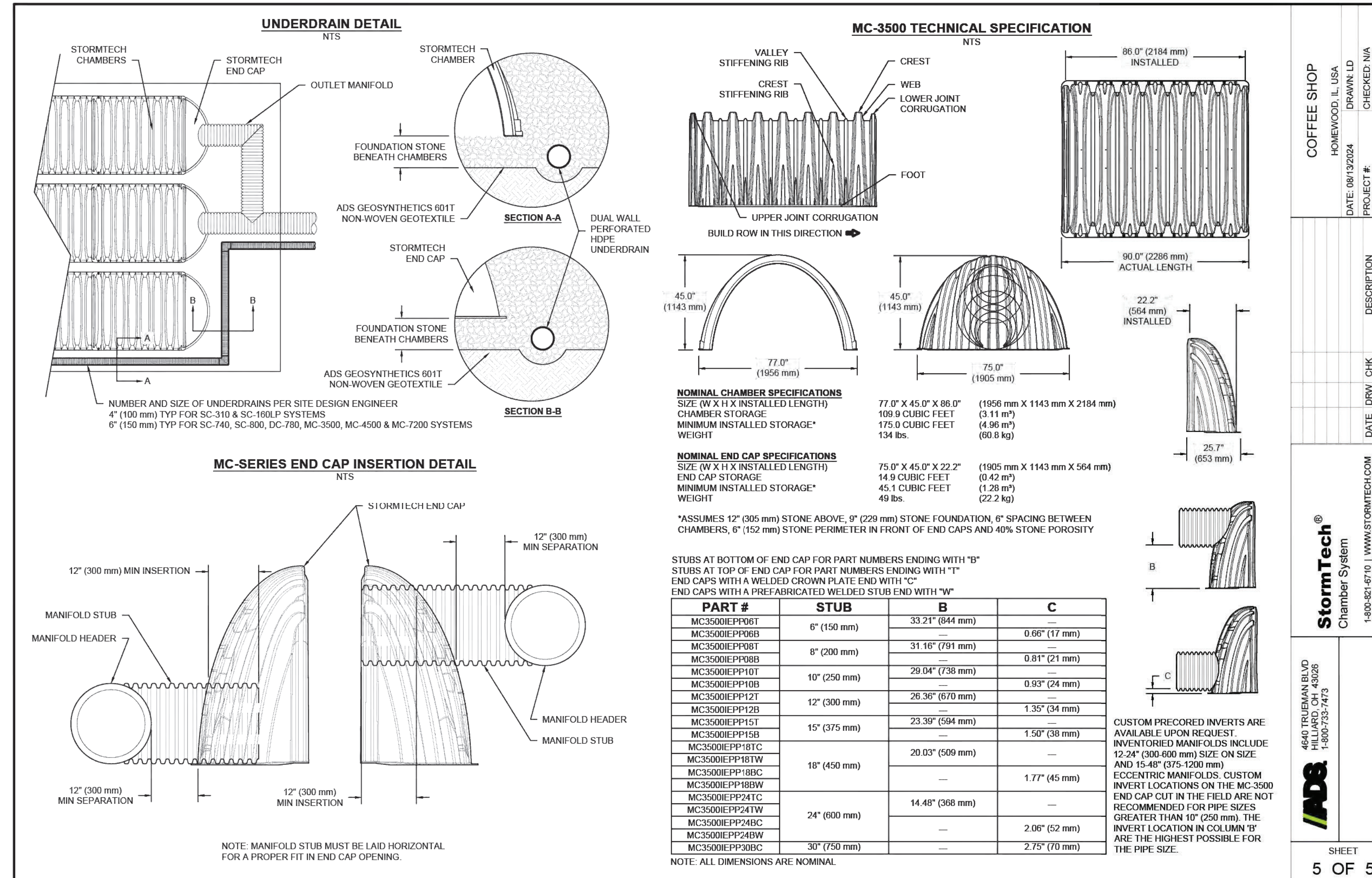
SHEET TITLE

SEWER DETAILS

DRAWN: ARM
CHECKED: LND
PM: RCS

PROJECT NUMBER
SHEET NUMBER

23129
C-12



COFFEE SHOP
HOMEWOOD, IL USA
DATE: 08/13/2024
DRAWN: LD
PROJECT #:
CHECKED: N/A
DESCRIPTION:
DATE: DRW / CHK
4540 TRUMAN BLVD
HOMERIDGE, IL 60436
1-800-232-7473

StormTech®
Chamber System

1-800-232-6710 | WWW.STORMTECH.COM
FOR MORE INFORMATION, CONTACT YOUR LOCAL STORMTECH REPRESENTATIVE.
STORMTECH SYSTEMS, INC. IS NOT RESPONSIBLE FOR ANY ERRORS OR OMISSIONS IN THIS DOCUMENT. THE USER ASSUMES ALL LIABILITY FOR THE PROPER USE OF THE INFORMATION CONTAINED HEREIN.

SHEET
5 OF 5

ARC DESIGN
RESOURCES INC.

5281 ZENITH PARKWAY
LOVES PARK, IL 61111
VOICE: (815) 484-4300
FAX: (815) 484-4303

www.arcdesign.com
Illinois Design Firm License No. 184-001334

PROJECT NAME
OWNER'S NAME

RESTAURANT WITH DRIVE-THRU

3047 183RD STREET
HOMEWOOD, IL
COOK COUNTY

ALRIG USA
RACHEL DELANEY
RACHEL@ALRIGUSA.COM
(248) 909-7072

CONSULTANTS

ISSUED FOR

ITEM	DATE
1. SITE PLAN REVIEW	8/13/2024
2. --	--
3. --	--
4. --	--
5. --	--
6. --	--
7. --	--
8. --	--
9. --	--
10. --	--
11. --	--
12. --	--

REVISIONS

ITEM	DATE
1. --	--
2. --	--
3. --	--
4. --	--
5. --	--
6. --	--

SHEET TITLE

ADS DETAIL

DRAWN: ARM
CHECKED: LND
PM: RCS

PROJECT NUMBER
SHEET NUMBER

23129

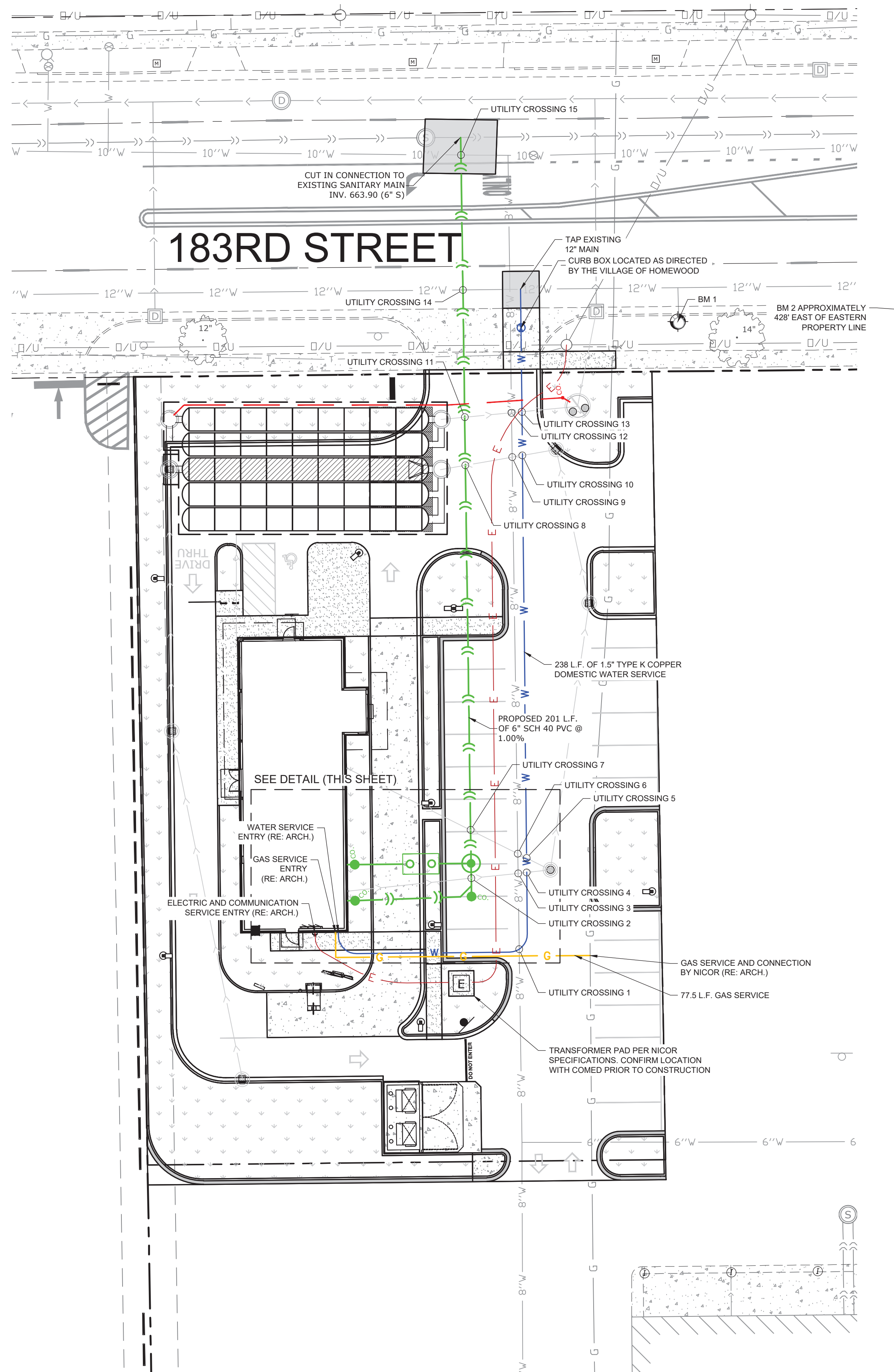
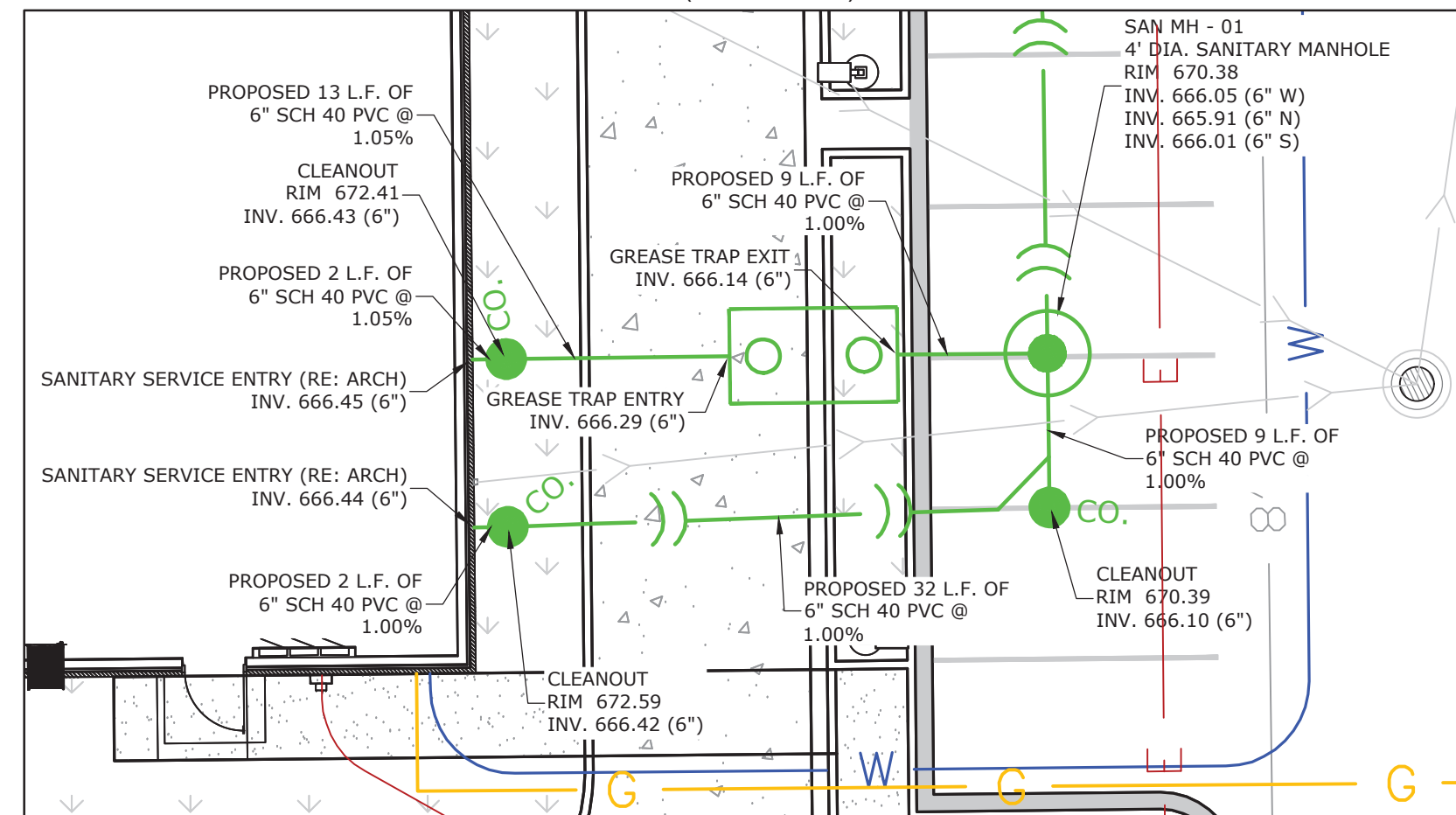
C-14

UTILITY CROSSING TABLE

UTILITY CROSSING	BOTTOM OF TOP PIPE	TOP OF BOTTOM PIPE	VERTICAL CLEARANCE
1	EXISTING WATER SERVICE: 650.10'	PROPOSED WATER SERVICE: 649.60'	0.50'
2	STORM: 667.21'	SANITARY: 666.57'	0.64'
3	STORM: 666.14'	EXISTING WATER SERVICE: 665'	2.14'
4	STORM: 667.11'	PROPOSED WATER SERVICE: 664.90'	2.21'
5	STORM: 667.13'	PROPOSED WATER SERVICE: 664.89'	2.24'
6	STORM: 667.15'	EXISTING WATER SERVICE: 664.89'	2.26'
7	STORM: 667.23'	SANITARY: 666.34'	0.89'
8	STORM: 665.49'	SANITARY: 665.34'	0.15'
9	STORM: 665.62'	EXISTING WATER SERVICE: 665.47'	0.15'
10	STORM: 665.64'	PROPOSED WATER SERVICE: 665.41'	0.23'
11	STORM: 665.40'	SANITARY: 665.19'	0.21'
12*	STORM: 665.34'	EXISTING WATER SERVICE: 663.84'	1.50'
13	STORM: 665.32'	PROPOSED WATER SERVICE: 663.82'	1.50'
14	EXISTING WATERMAIN: 664.06'	SANITARY: 664.84'	-0.78'
15	EXISTING WATERMAIN: 664.64'	SANITARY: 664.47'	0.17'

CONTRACTOR SHALL OPEN CUT AND VERIFY TOP OF PIPE ELEVATIONS OF EXISTING 8" WATER LINE AND THE 10" AND 12" WATERMAINS PRIOR TO ANY INSTALLATION ACTIVITIES. IF ELEVATIONS ARE HIGHER THAN SHOWN IN THE TABLE, CONTACT ARC DESIGN

SANITARY SERVICE DETAIL (SCALE 1:10)



LEGEND

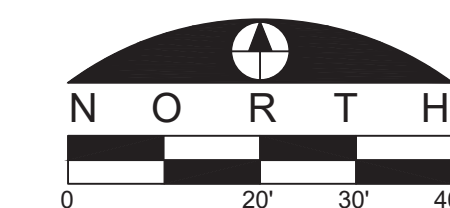
- PROPERTY LINE
- 10" W EXISTING WATER MAIN
- V PROPOSED WATER SERVICE
- EXISTING SANITARY SEWER
- PROPOSED SANITARY SEWER
- PROPOSED STORM SEWER
- G EXISTING GAS MAIN
- G PROPOSED GAS MAIN
- E PROPOSED UNDERGROUND ELECTRIC SERVICE
- U/T PROPOSED TELEPHONE SERVICE
- EXISTING OVERHEAD UTILITY LINES
- PROPOSED TRANSFORMER
- EXISTING FIRE HYDRANT ASSEMBLY
- EXISTING WATER VALVE
- PROPOSED WATER VALVE
- EXISTING MANHOLE OR CATCH BASIN
- PROPOSED SANITARY MANHOLE
- CO PROPOSED SANITARY CLEANOUT
- PROPOSED GREASE TRAP (SEE ARCH PLANS FOR DETAIL)
- EXISTING SANITARY MANHOLE
- EXISTING UTILITY POLE
- PROPOSED UTILITY POLE
- EXISTING LIGHT POLE
- LIGHT POLE AND FIXTURE

UTILITY NOTES

- THE CONTRACTOR SHALL PROVIDE PROPER SAFETY DEVICES IN ACCORDANCE WITH OSHA STANDARDS FOR ALL STAFF WORKING IN OPEN TRENCH CONDITIONS. TRENCH BOXES AND OTHER SHORING SHALL BE REQUIRED FOR ALL TRENCH WORK, IN THE RIGHT-OF-WAY, AND ON PRIVATE PROPERTY, WHILE THE SITE IS UNDER CONSTRUCTION.
- CONTACT ALL PUBLIC AND PRIVATE UTILITY COMPANIES 48 HOURS PRIOR TO ANY EXCAVATION. COST OF REPLACEMENT OR REPAIR OF EXISTING UTILITIES DAMAGED AS A RESULT OF THE CONTRACTOR'S OPERATION SHALL BE THE CONTRACTOR'S RESPONSIBILITY.
- THE CONTRACTOR SHALL FIELD VERIFY THE ELEVATIONS OF THE BENCHMARKS PRIOR TO COMMENCING WORK. THE CONTRACTOR SHALL ALSO FIELD VERIFY LOCATION, ELEVATION AND SIZE OF EXISTING UTILITIES, AND VERIFY FLOOR, CURB OR PAVEMENT ELEVATIONS WHERE MATCHING INTO EXISTING WORK. THE CONTRACTOR SHALL FIELD VERIFY HORIZONTAL CONTROL BY REFERENCING SHOWN COORDINATES TO KNOWN PROPERTY LINES. NOTIFY ENGINEER OF DISCREPANCIES IN EITHER VERTICAL CONTROL PRIOR TO PROCEEDING WITH WORK.
- REFER TO BUILDING PLANS FOR EXACT LOCATIONS OF NEW UTILITY ENTRIES.
- CONTRACTOR SHALL SET ALL CLEANOUT, CASTINGS, AND VALVE BOXES TO FINISHED GRADE.

BENCHMARKS

DESCRIPTION	ELEVATION
BENCHMARK 1 SE BOLT ON FIRE HYDRANT	671.56
BENCHMARK 2 CUT SQUARE SW CORNER OF CONCRETE PAD	669.28



ARC DESIGN
RESOURCES INC.

5281 ZENITH PARKWAY
LOVES PARK, IL 61111
VOICE: (815) 484-4300
FAX: (815) 484-4303

www.arcdesign.com
Illinois Design Firm License No. 184-001334

PROJECT NAME
OWNER'S NAME

RESTAURANT WITH DRIVE-THRU

3047 183RD STREET
HOMEWOOD, IL
COOK COUNTY

ALRIG USA
RACHEL DELANEY
RACHEL@ALRIGUSA.COM
(248) 909-7072

CONSULTANTS

ISSUED FOR

ITEM	DATE
1. SITE PLAN REVIEW	8/13/2024
2. ---	---
3. ---	---
4. ---	---
5. ---	---
6. ---	---
7. ---	---
8. ---	---
9. ---	---
10. ---	---
11. ---	---
12. ---	---

REVISIONS

ITEM	DATE
1. ---	---
2. ---	---
3. ---	---
4. ---	---
5. ---	---
6. ---	---

SHEET TITLE

UTILITY PLAN

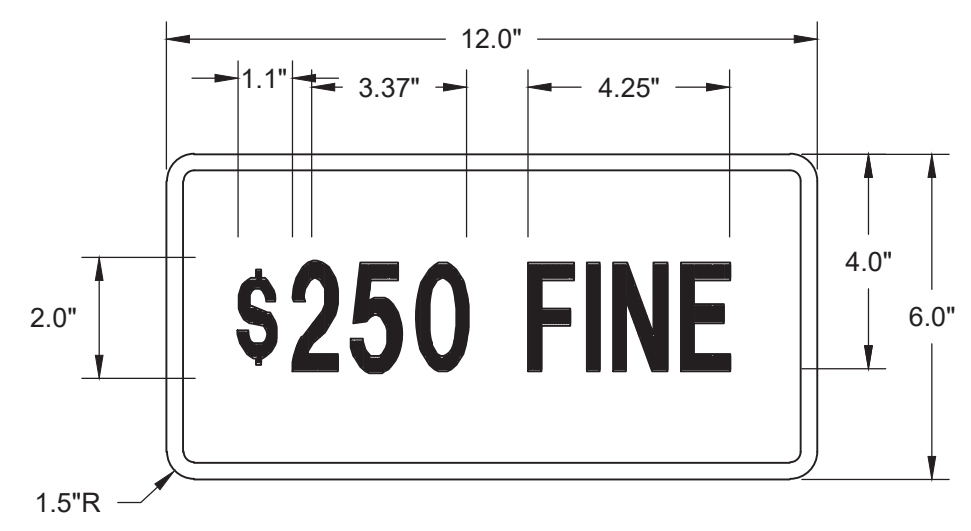
DRAWN	ARM
CHECKED	LND
PM	RCS

PROJECT NUMBER
SHEET NUMBER

23129

C-15

BOLLARD AND HANDICAPPED PARKING SIGN DETAIL



COLOR: LEGEND AND BORDER, GREEN NON-REFLECTORIZED BACKGROUND; WHITE REFLECTORIZED



COLOR: TEXT, ARROW, AND BORDER, GREEN WHITE SYMBOL ON BLUE BACKGROUND BACKGROUND WHITE

18" X 12" 18 GA. STEEL BAKED ENAMEL INTERNATIONAL HANDICAP SYMBOL MANUFACTURED IN ACCORDANCE WITH MUTCD R7-8

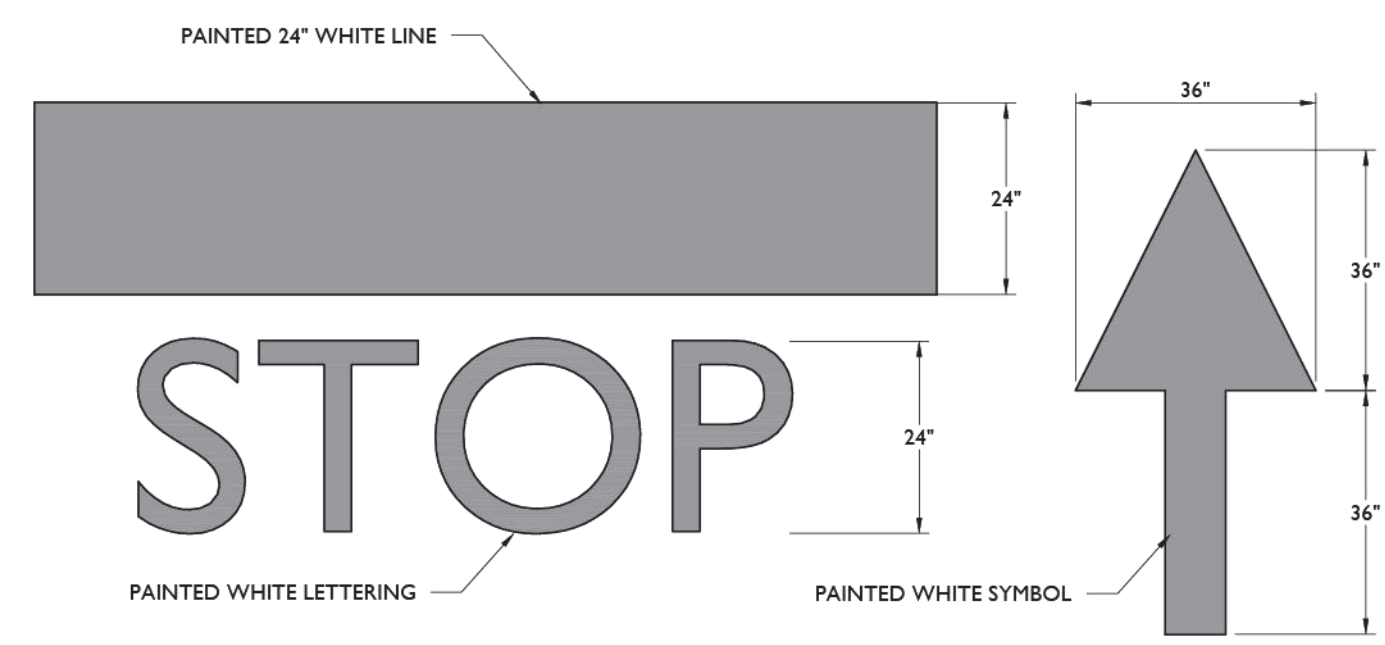


REFER TO DETAIL

U-CHANNEL SIGN POST

4" STEEL BOLLARD FILLED WITH CONCRETE PAINTED YELLOW (NOTE: NO BOLLARD REQUIRED IF SIGN POST IS IN GRASS AREA)

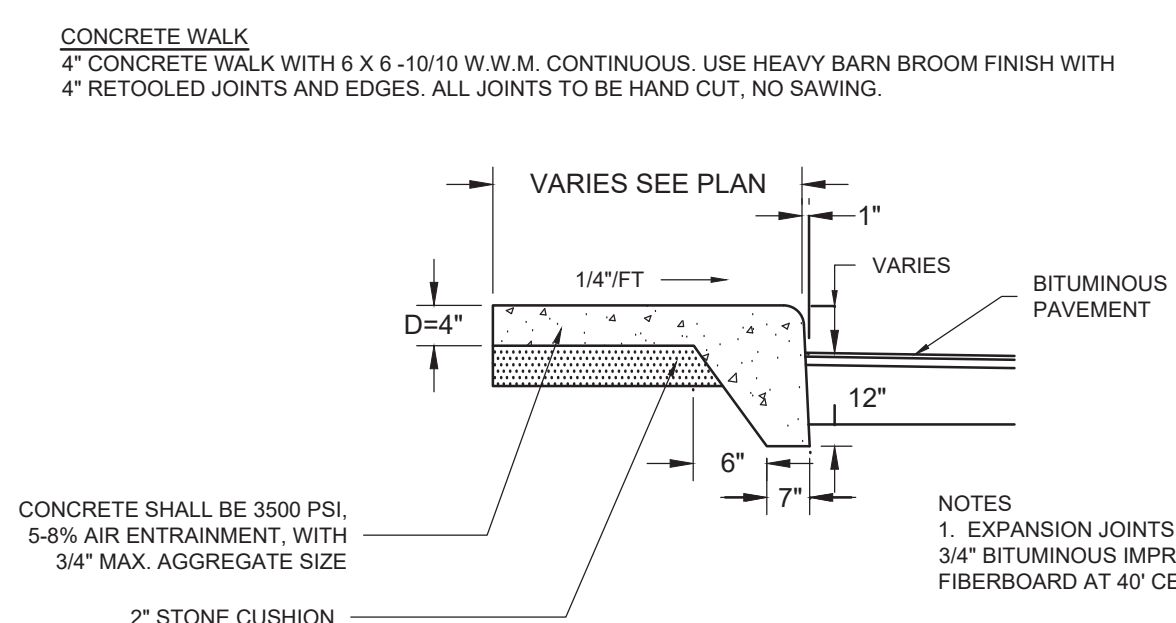
CONCRETE SURROUND AROUND PIPE COLUMN



STOP BAR & ARROW DETAILS

NOT TO SCALE

CONCRETE WALKWAY DETAIL

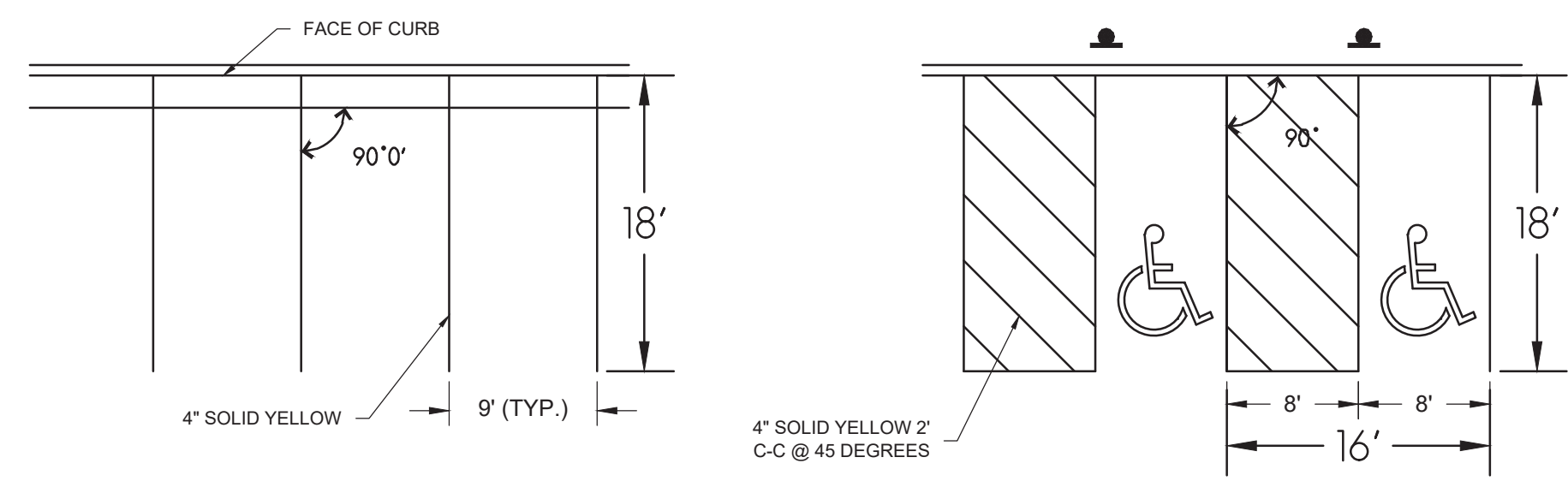


CONCRETE SHALL BE 3500 PSI, 5-8% AIR ENTRAINMENT, WITH 3/4" MAX. AGGREGATE SIZE
2" STONE CUSHION

NOTES:
1. EXPANSION JOINTS SHALL BE 3/4" BITUMINOUS IMPREGNATED FIBERBOARD AT 40' CENTERS.
2. D=7" AT DRIVEWAYS.
3. SIDEWALK RAMP AT DRIVES SHALL BE BUILT ACCORDING TO I.D.O.T. STANDARD NO. 424001

TYPICAL 90 DEGREE PARKING STRIPING DETAILS

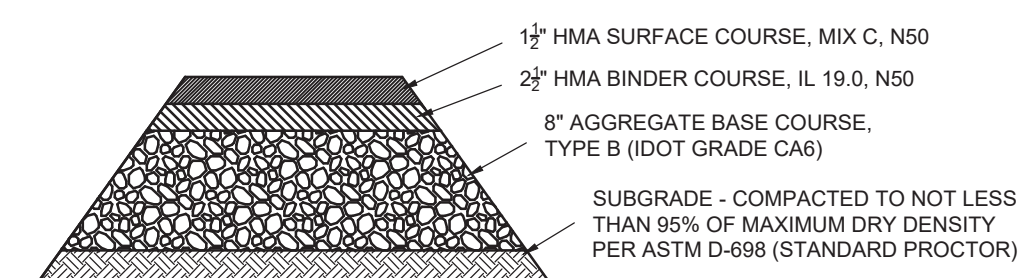
NOT TO SCALE



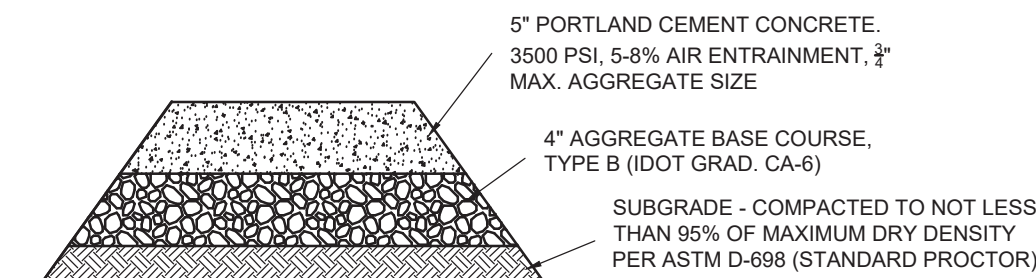
90° STANDARD STALLS

90° HANDICAP STALLS

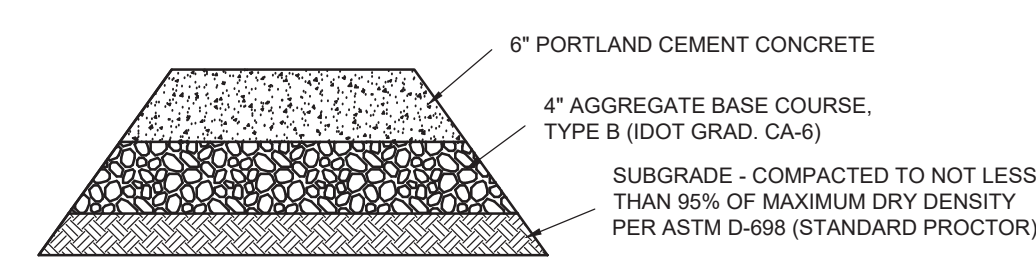
PAVEMENT DETAILS (SUBJECT TO CHANGE UPON RECEIPT OF GEOTECHNICAL REPORT)



ASPHALT PAVEMENT

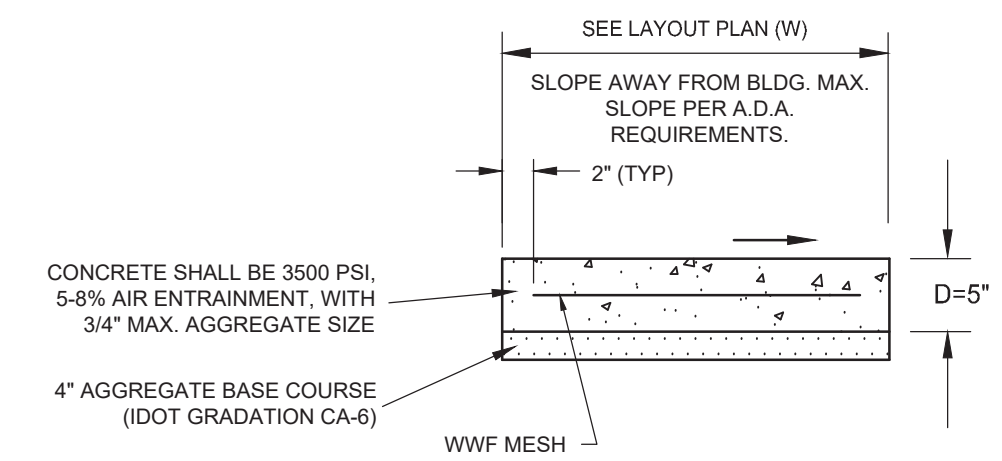


CONCRETE SIDEWALK



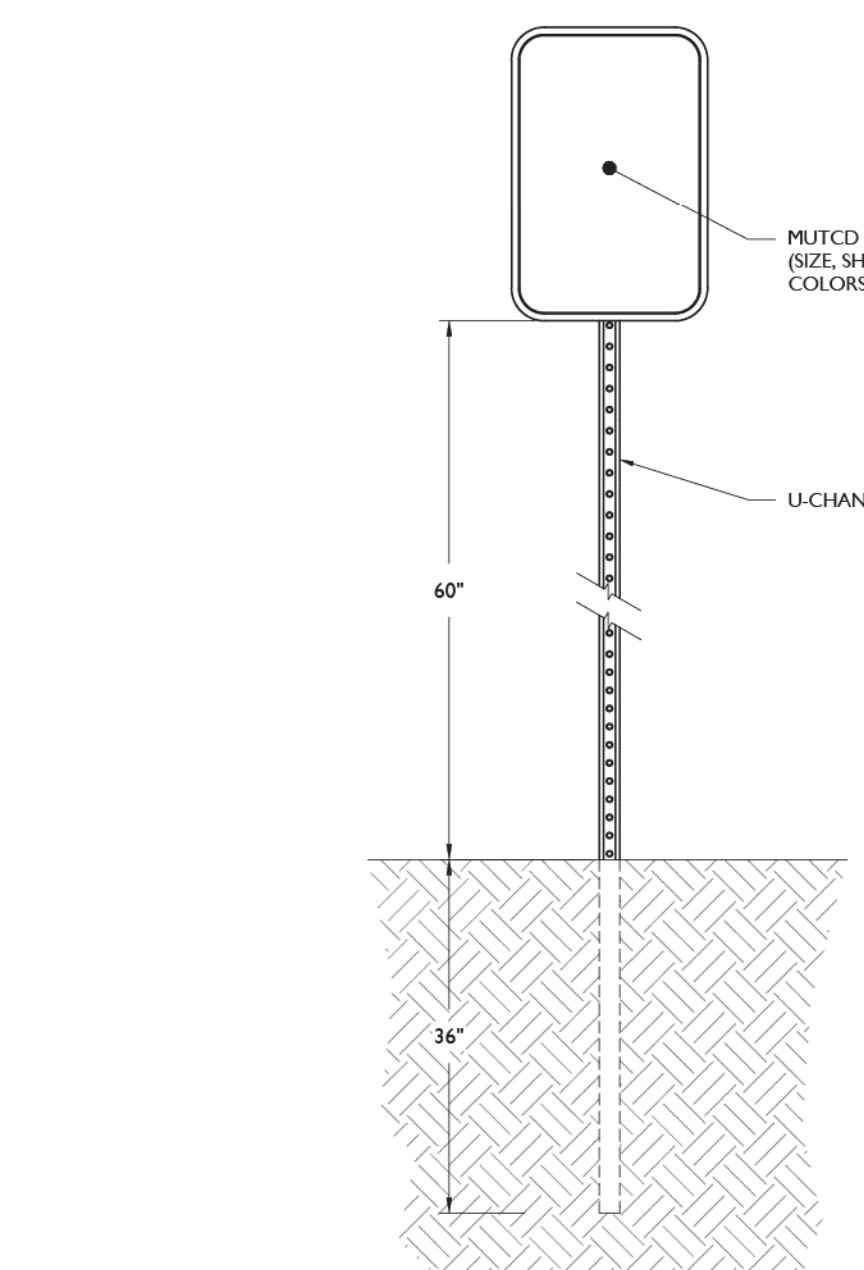
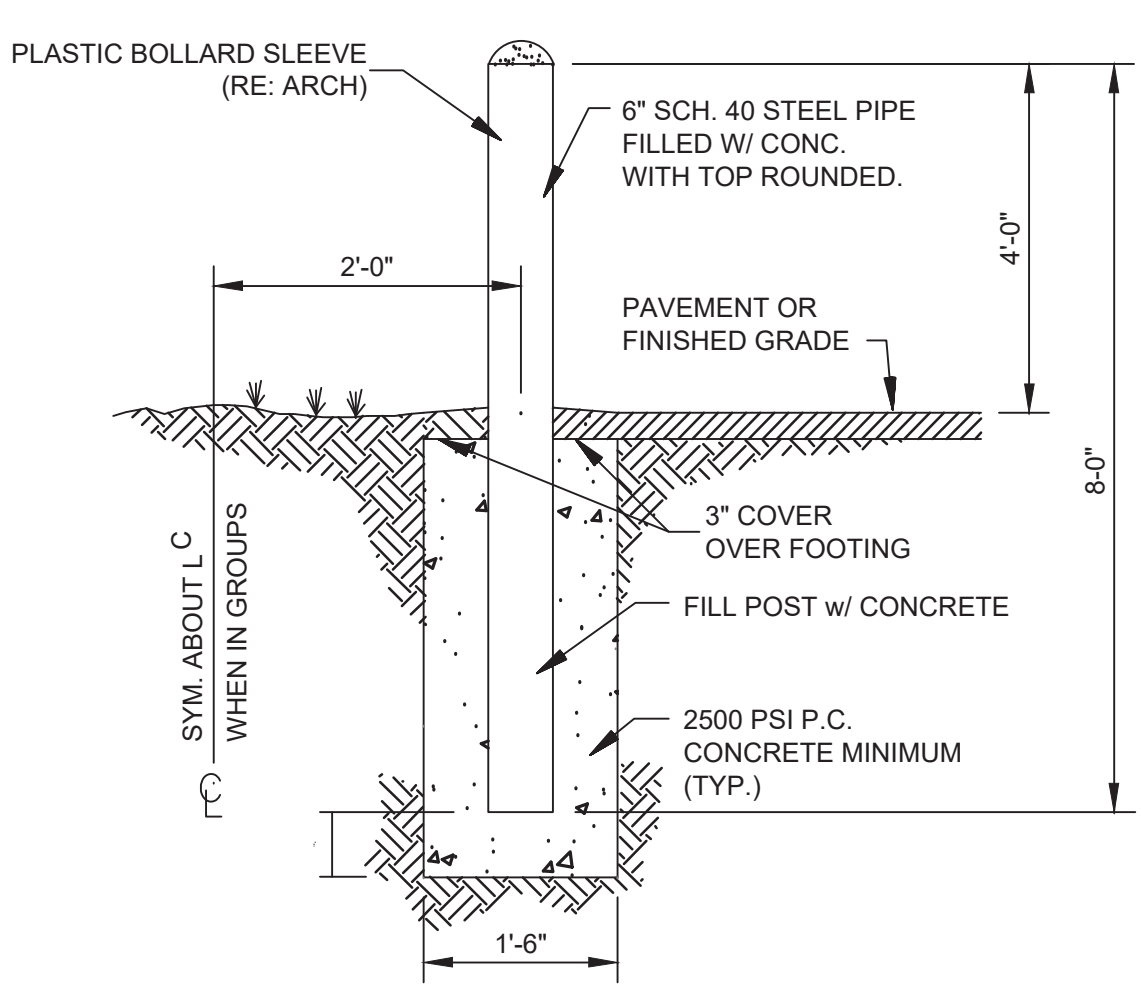
CONCRETE PAVEMENT

CONCRETE SIDEWALK DETAIL



- TOOLED JOINTS SHALL BE 1/4" D AND SHALL BE SPACED EQUAL TO W (MAX) AND SHALL DIVIDE PANELS EQUALLY.
- EXPANSION JOINTS SHALL BE 3/4" BITUMINOUS IMPREGNATED FIBERBOARD ALONG THE PERIMETER OF THE SIDEWALK PANEL WERE PROPOSED SIDEWALK IS FLUSH WITH ADJACENT EXISTING CONCRETE.
- SIDEWALK RAMP AT DRIVES SHALL BE BUILT ACCORDING TO DOT STANDARDS
- WWF MESH SHALL BE 6 X 6 - 10/10 CONTINUOUS WELDED WIRE
- USE LIGHT BARN BROOM FINISH WITH 4" RETOOLED JOINTS AND EDGES.

STANDARD BOLLARD DETAIL



SIGN POST DETAIL

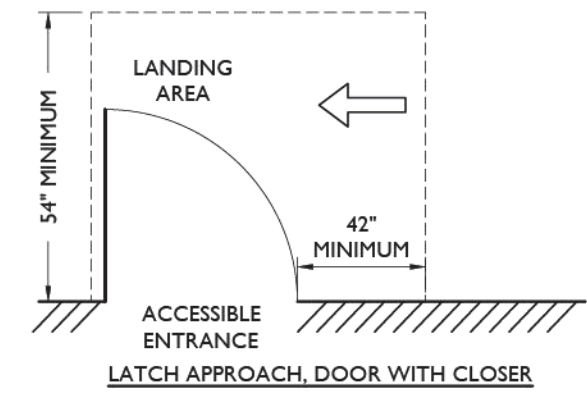
NOT TO SCALE

MUTCD NUMBER	TEXT	COLOR		SIZE OF SIGN (WIDTH X HEIGHT)	TYPE OF MOUNT
		LEGEND	BACKGROUND		
STOP SIGN (R1-1)	STOP	RED	WHITE	36"x36"	GROUND
DO NOT ENTER (R5-1)	DO NOT ENTER	RED	WHITE	30"x30"	GROUND

NOTE:
1. ALL SIGNS SHALL BE IN ACCORDANCE WITH THE FEDERAL HIGHWAY ADMINISTRATION (FHWA) MANUAL ON UNIFORM TRAFFIC CONTROL DEVICES (MUTCD), EXCEPT AS NOTED.
2. ALL SIGNS SHALL BE MOUNTED AS TO NOT OBSTRUCT THE SHAPE OF "STOP" (R1-1) AND "YIELD" (R1-2) SIGNS.

SIGN DATA TABLE

NOT TO SCALE



ACCESSIBLE ENTRANCE LANDING DETAIL

NOT TO SCALE

- NOTES:
1. MAXIMUM SLOPE ON LANDING SHALL BE 1:50 IN ALL DIRECTIONS
2. DIMENSIONS SHOWN HERE ARE THE MINIMUM DIMENSIONS REQUIRED FOR AN ADA COMPLIANT LANDING AT THE ACCESSIBLE ENTRANCE. REFER TO SITE PLAN FOR SITE SPECIFIC DIMENSIONS THAT MAY SPECIFY A LARGER LANDING AREA.
3. CONTRACTOR SHALL CONTACT THE ENGINEER BEFORE CONSTRUCTION IF THE ACCESSIBLE ENTRANCE ON SITE DOES NOT MATCH THE SCENARIO SHOWN ABOVE.

ARC DESIGN RESOURCES INC.
5281 ZENITH PARKWAY
LOVES PARK, IL 61111
VOICE: (815) 484-4300
FAX: (815) 484-4303
www.arcdesign.com
Illinois Design Firm License No. 184-001334

PROJECT NAME
OWNER'S NAME
RESTAURANT WITH DRIVE-THRU
3047 183RD STREET
HOMEWOOD, IL
COOK COUNTY
ALRIG USA
RACHEL DELANEY
RACHEL@ALRIGUSA.COM
(248) 909-7072

CONSULTANTS

ISSUED FOR	DATE
1. SITE PLAN REVIEW	8/13/2024
2. ---	---
3. ---	---
4. ---	---
5. ---	---
6. ---	---
7. ---	---
8. ---	---
9. ---	---
10. ---	---
11. ---	---
12. ---	---

SHEET TITLE
DETAILS

DRAWN	ARM
CHECKED	LND
PM	RCS

PROJECT NUMBER
SHEET NUMBER
23129
C-16

PROJECT NAME
OWNER'S NAME

RESTAURANT WITH DRIVE-THRU

3047 183RD STREET
HOMEWOOD, IL
COOK COUNTY

ALRIG USA
RACHEL DELANEY
RACHEL@ALRIGUSA.COM
(248) 909-7072

CONSULTANTS

ISSUED FOR

NO.	DATE
1.	8/13/2024
2.	---
3.	---
4.	---
5.	---
6.	---
7.	---
8.	---
9.	---
10.	---
11.	---
12.	---

NO.	DATE
1.	---
2.	---
3.	---
4.	---
5.	---
6.	---

SHEET TITLE

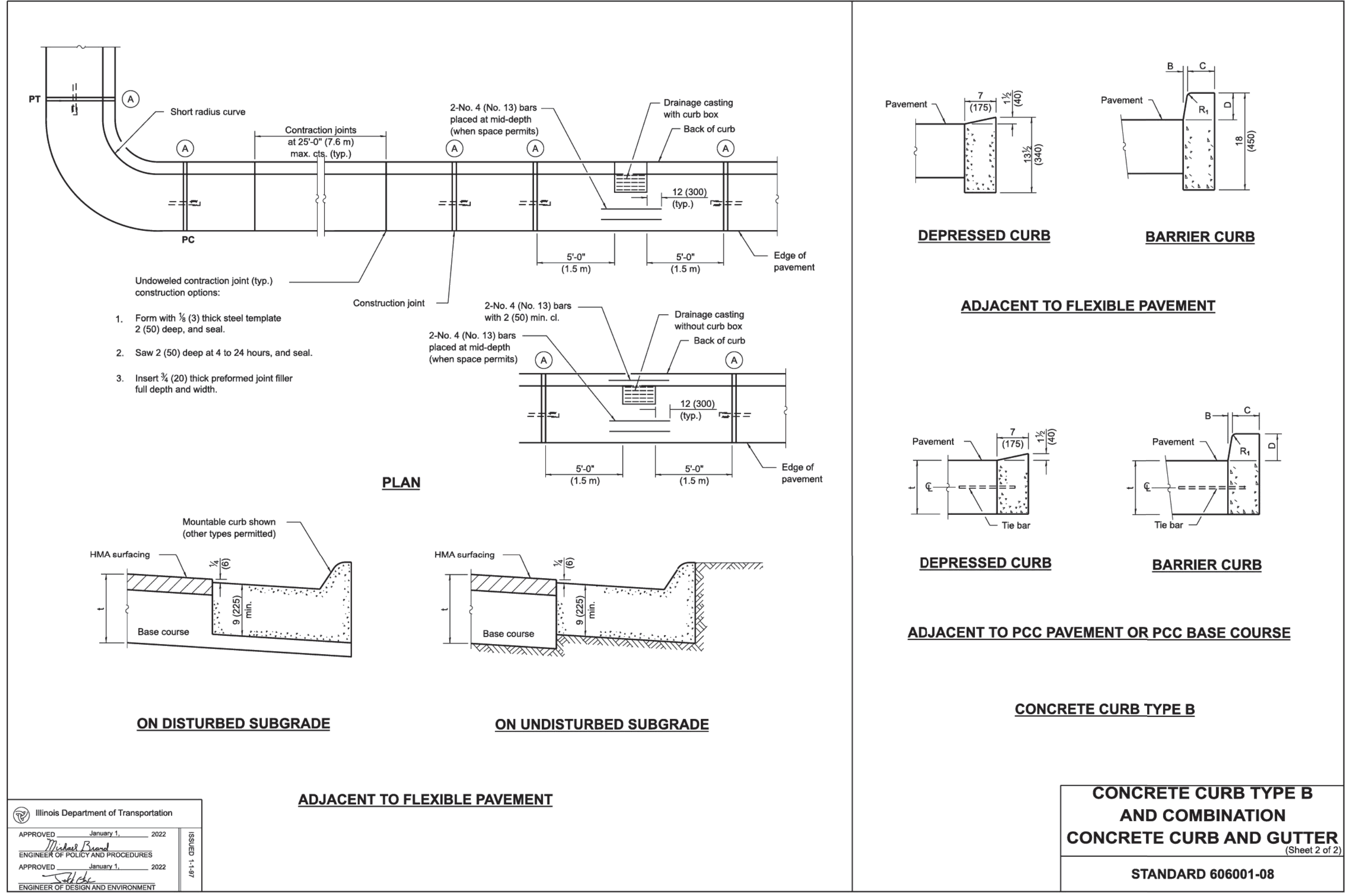
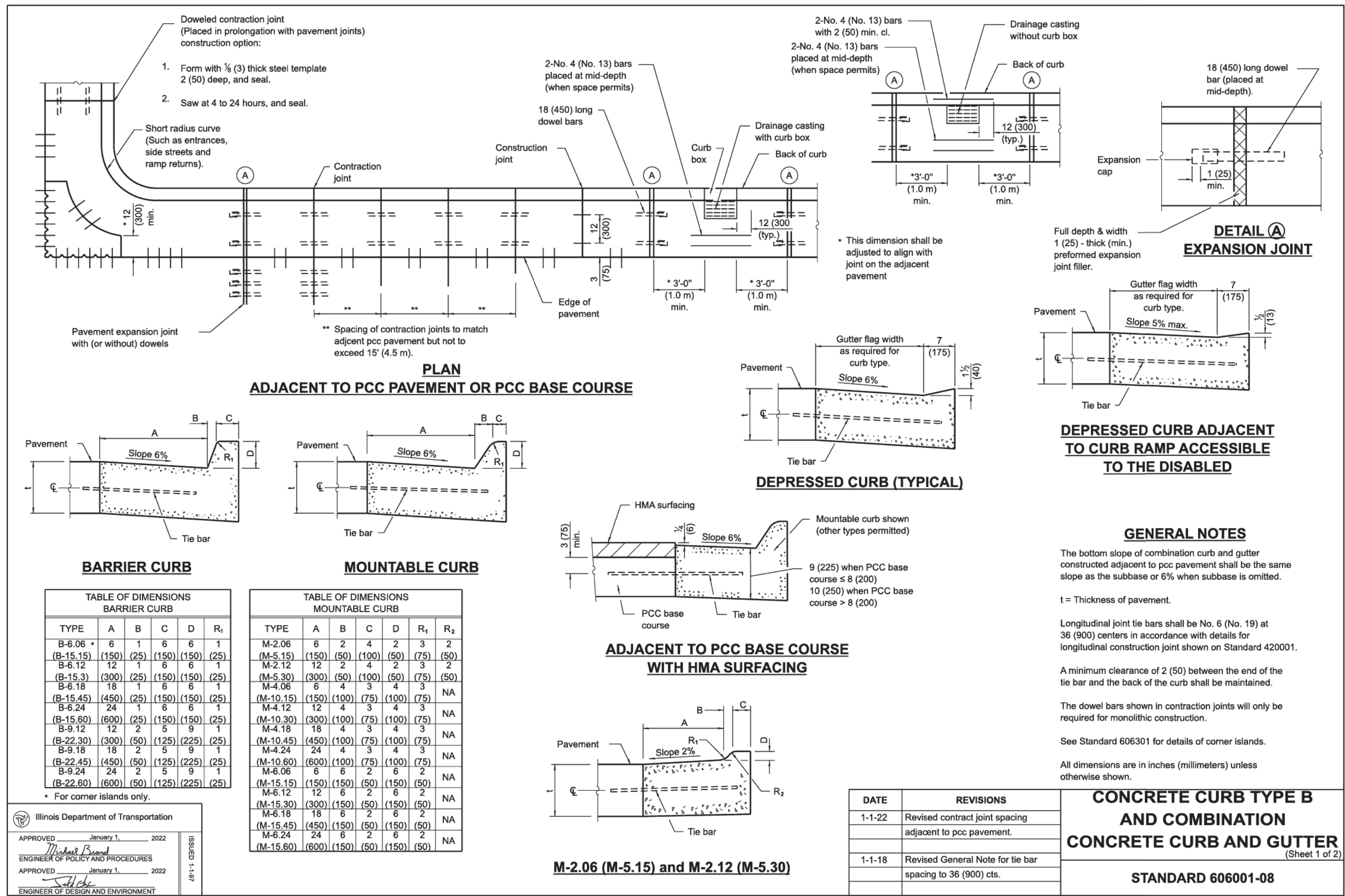
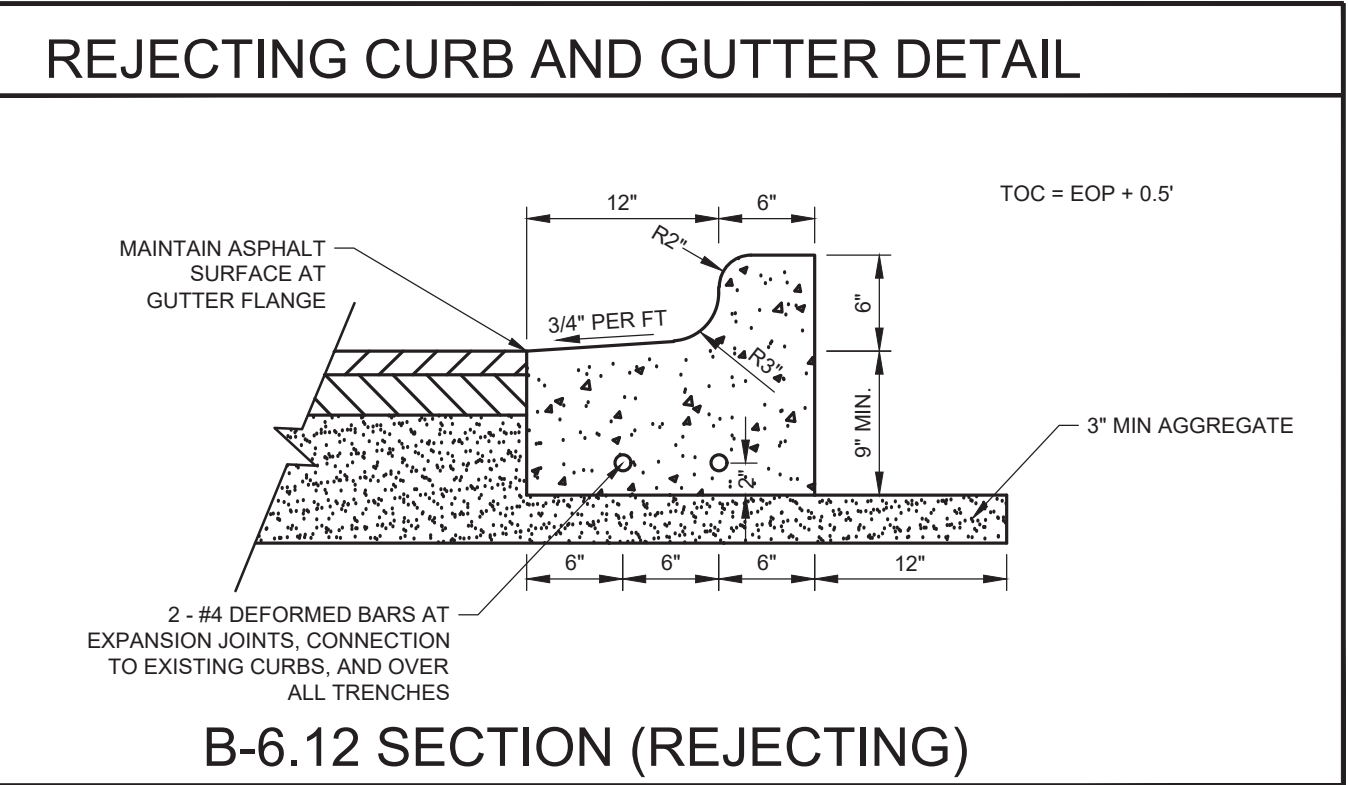
DETAILS

DRAWN: ARM
CHECKED: LND
PM: RCS

PROJECT NUMBER
SHEET NUMBER

23129

C-17



PROJECT NAME
OWNER'S NAME

**RESTAURANT
WITH
DRIVE-THRU**
3047 183RD STREET
HOMEWOOD, IL
COOK COUNTY
ALRIG USA
RACHEL DELANEY
RACHEL@ALRIGUSA.COM
(248) 909-7072

CONSULTANTS

ISSUED FOR

ITEM	DATE
1. SITE PLAN REVIEW	8/13/2024
2. ---	---
3. ---	---
4. ---	---
5. ---	---
6. ---	---
7. ---	---
8. ---	---
9. ---	---
10. ---	---
11. ---	---
12. ---	---

ITEMS	DATE
1. ---	---
2. ---	---
3. ---	---
4. ---	---
5. ---	---
6. ---	---

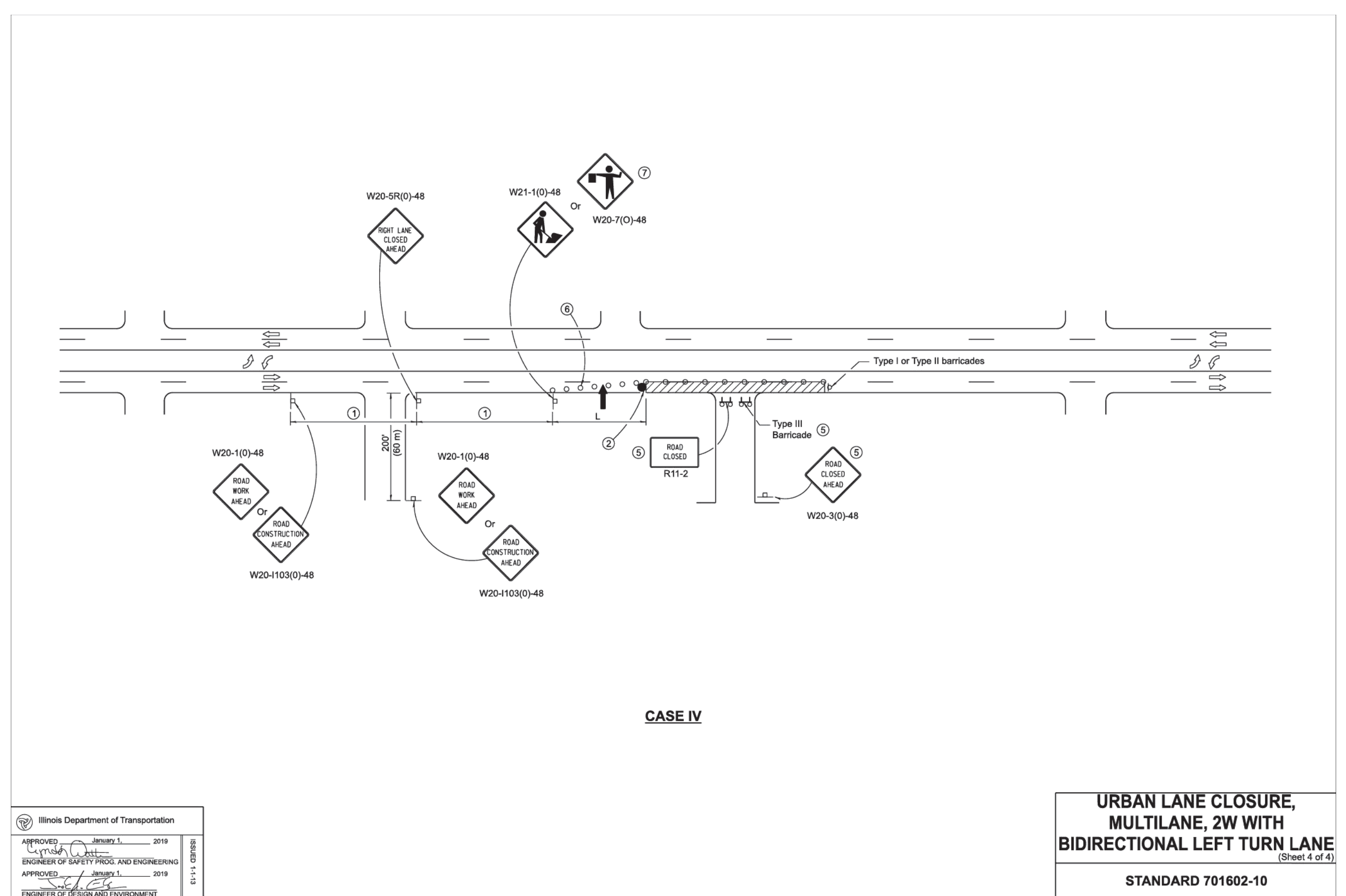
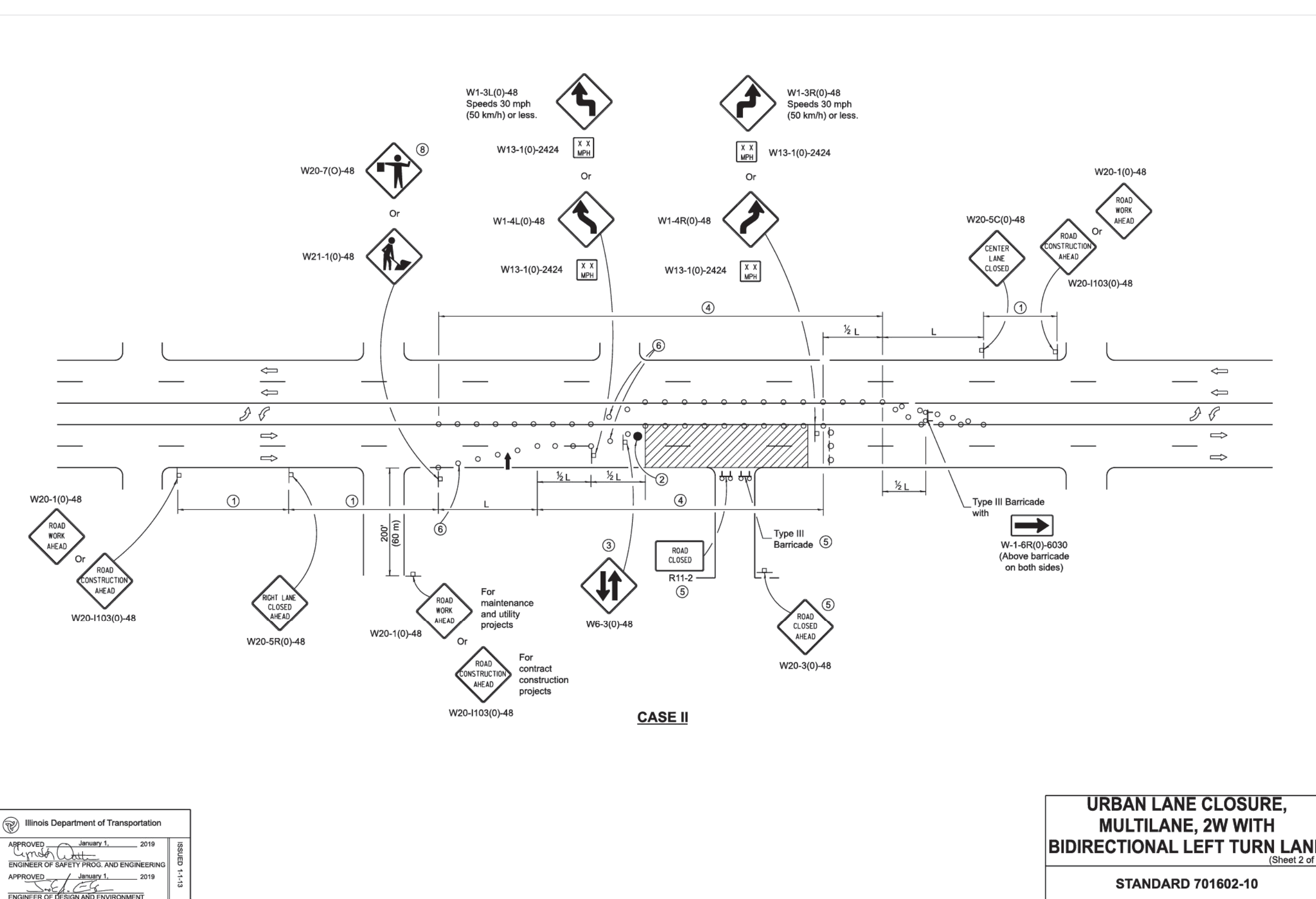
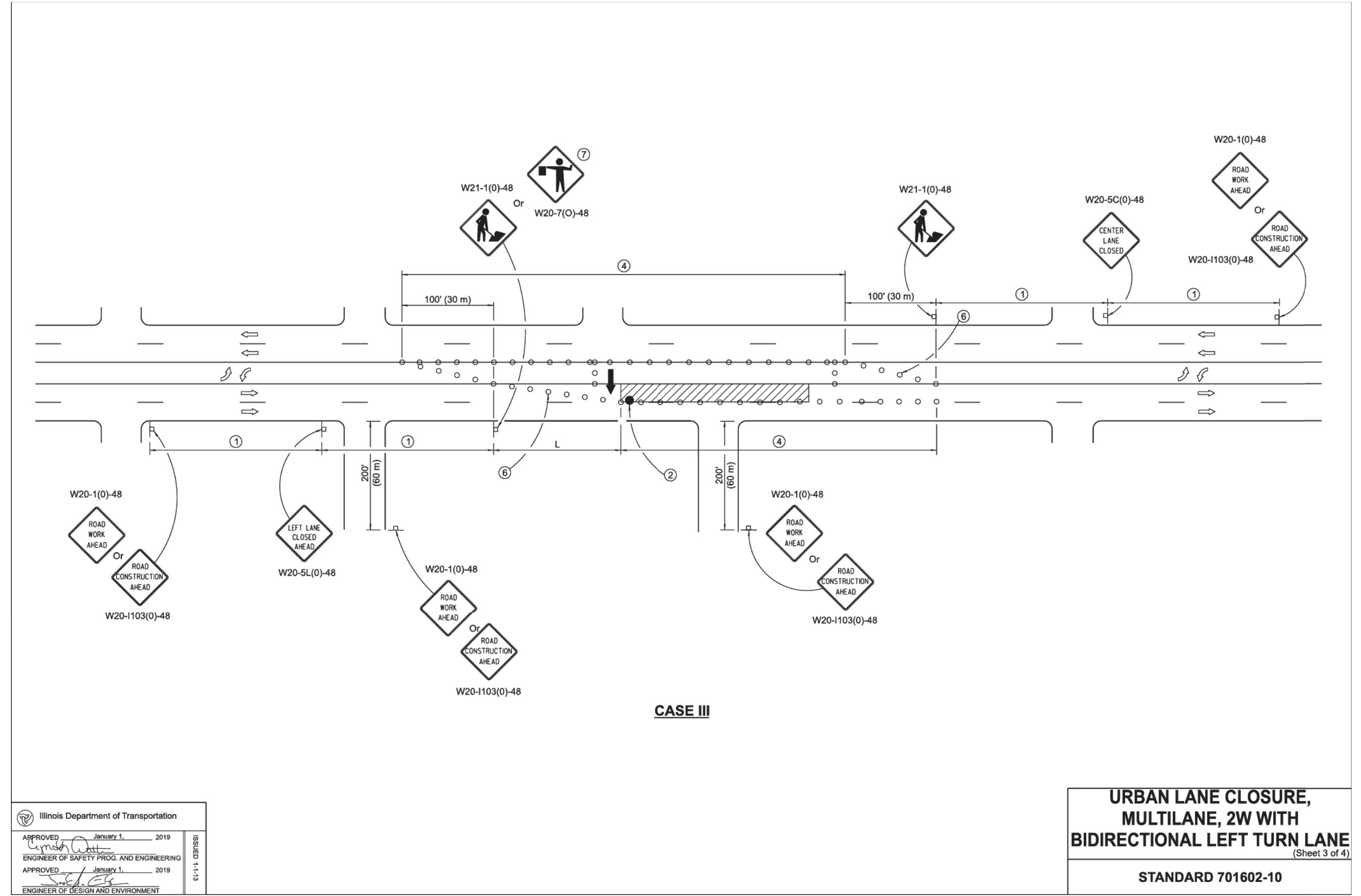
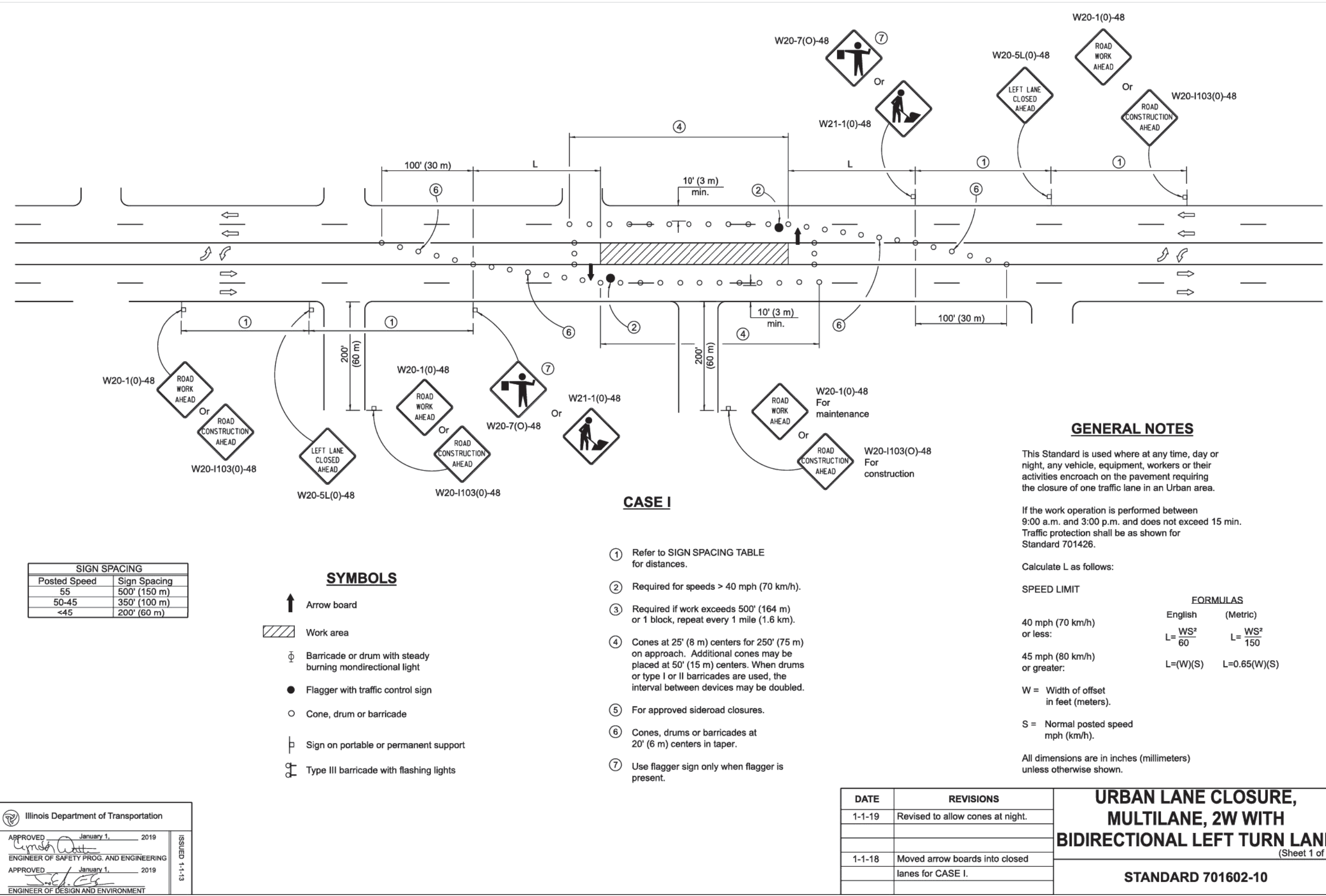
SHEET TITLE

DETAILS

DRAWN ARM
CHECKED LND
PM RCS

PROJECT NUMBER
SHEET NUMBER

23129
C-18



ARC DESIGN RESOURCES INC.
 5281 ZENITH PARKWAY
 LOVES PARK, IL 61111
 VOICE: (815) 484-4300
 FAX: (815) 484-4303
 www.arcdesign.com
 Illinois Design Firm License No. 184-001334

PROJECT NAME
 OWNER'S NAME
RESTAURANT WITH DRIVE-THRU
 3047 183RD STREET
 HOMEWOOD, IL
 COOK COUNTY
 ALRIG USA
 RACHEL DELANEY
 RACHEL@ALRIGUSA.COM
 (248) 909-7072

CONSULTANTS

ISSUED FOR

ITEM	DATE
1. SITE PLAN REVIEW	8/13/2024
2. --	--
3. --	--
4. --	--
5. --	--
6. --	--
7. --	--
8. --	--
9. --	--
10. --	--
11. --	--
12. --	--

REVISIONS

ITEM	DATE
1. --	--
2. --	--
3. --	--
4. --	--
5. --	--
6. --	--

SHEET TITLE
DETAILS

DRAWN	ARM
CHECKED	LND
PM	RCS

PROJECT NUMBER
 SHEET NUMBER
23129
C-19

