

Scope of Work/Pricing

The intent of this specification is that the locations presented herein shall be considered to be the actual work locations under this Contract. No deviations from the unit prices bid herein shall be allowed for the locations stated below except by permission granted by the Village Engineer.

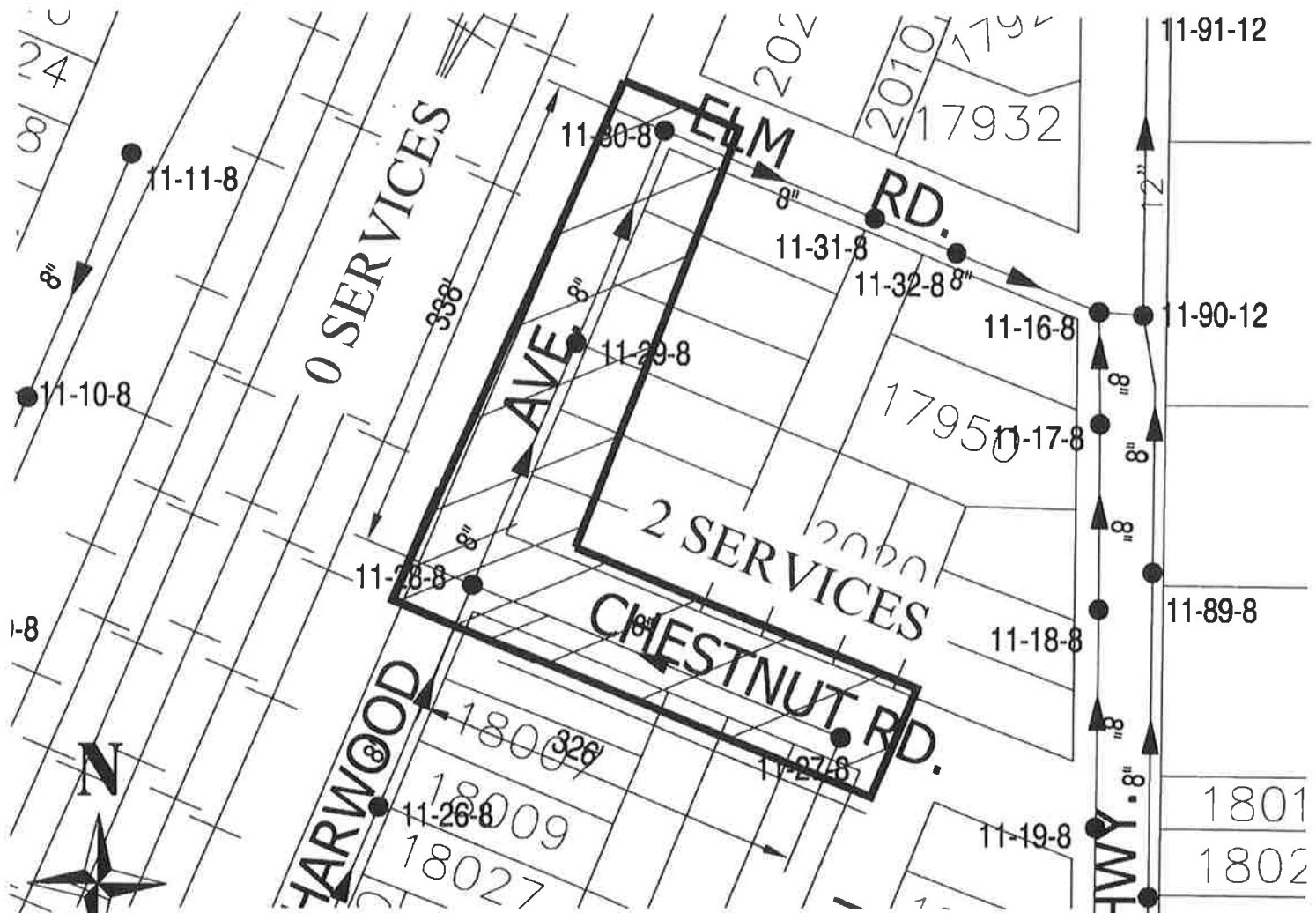
Locations List

The job locations below are located as indicated on the location maps included herein. Initial work quantities and locations are:

<i>Section</i>	<i>Size "</i>	<i>Manhole #</i>	<i>to</i>	<i>Manhole #</i>	<i>Linear Feet</i>	<i>Services</i>
Pine Alley	10	4-125-10		4-124-10	180	3
Pine Alley	10	4-124-10		4-123-10	170	4
Pine Alley	10	4-123-10		4-122-10	200	4
Harwood & Chestnut	8	11-28-8		11-29-8	180	0
Harwood	8	11-29-8		11-30-8	170	0
Chestnut	8	11-28-8		11-27-8	290	0
18532 Martin – rear	8	19-75-8		19-74-8	140	6
18526 Martin – rear	8	19-74-8		19-73-8	180	6
18510 Martin – rear	8	19-73-8		19-40-8	180	4
Juhlin & Idlewild	8	1508 Juhlin		18824 Juhlin	215	6
18844 Juhlin	8	18844 Juhlin		18824 Juhlin	260	8
18824 Juhlin	8	18824 Juhlin		18758 Juhlin	260	6
18758 Juhlin	8	18758 Juhlin		1506 Carson	215	6

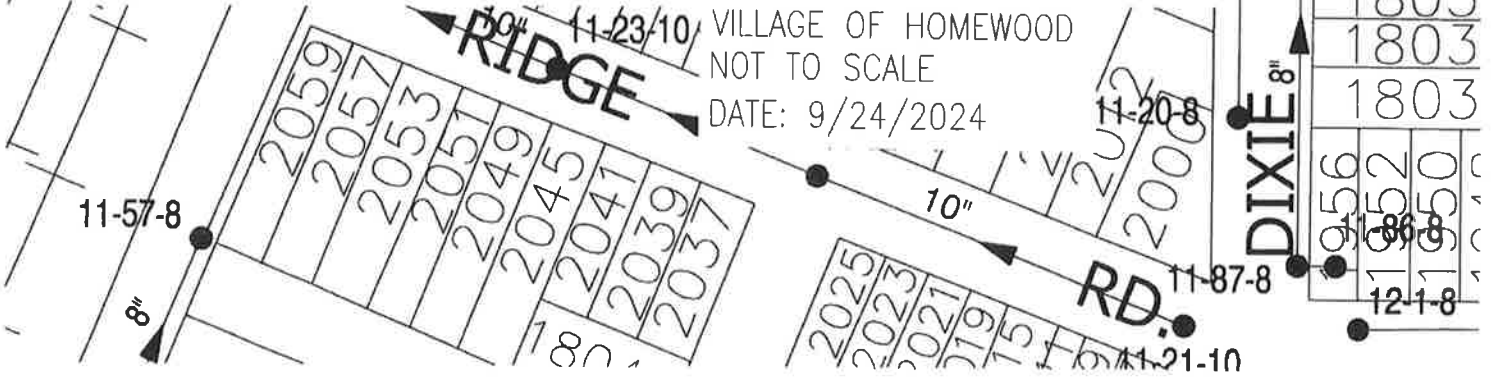
Manhole Numbering

Manhole numbering is for contractor convenience. The aforementioned addresses are approximate only. Actual manholes locations must be verified in the field. All service connection counts are approximate. The Contractor shall determine all final dimensions and service locations in the field prior to the start of construction.



VILLAGE OF HOMEWOOD 2024 SEWER LINING PROJECT

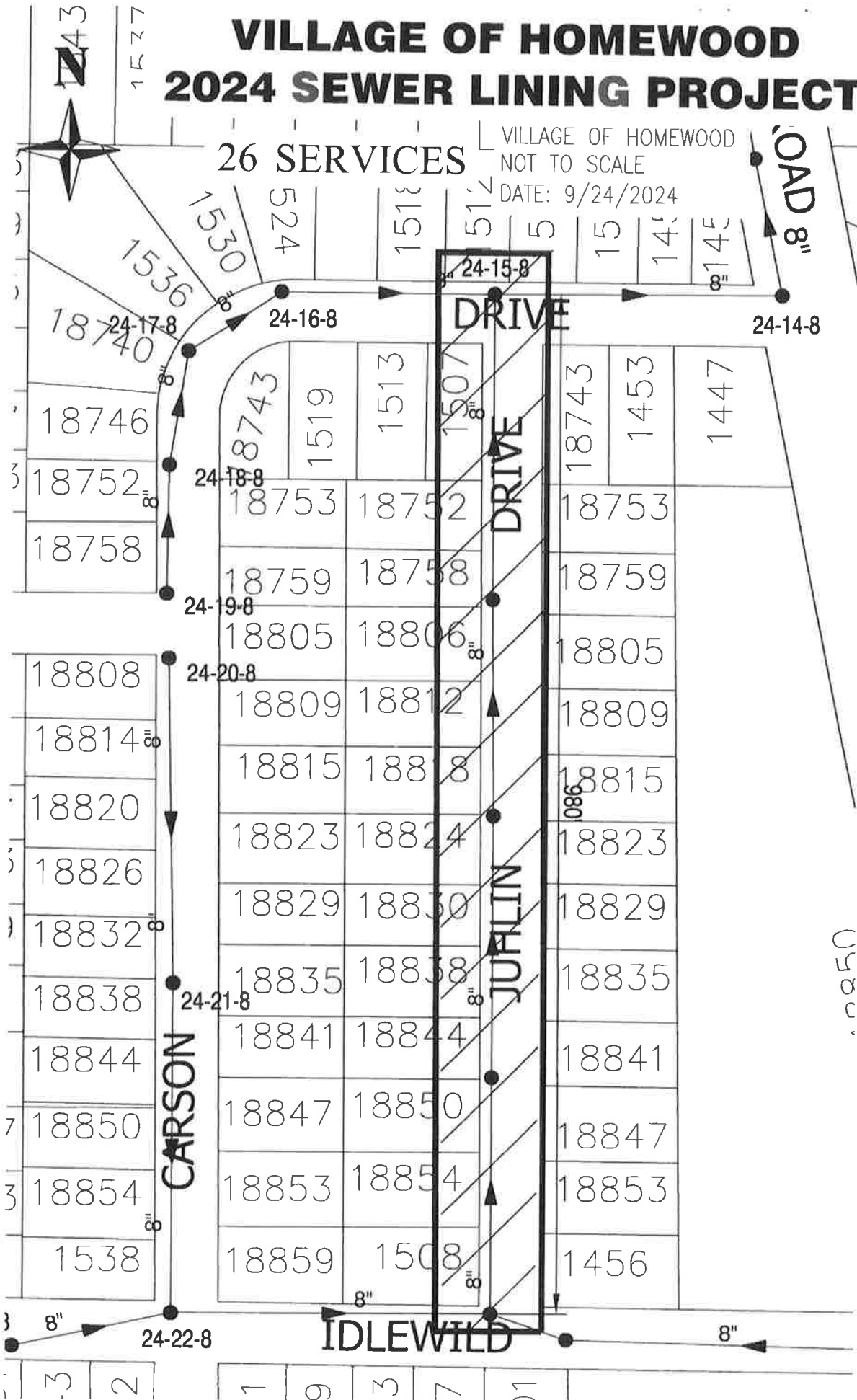
VILLAGE OF HOMEWOOD
NOT TO SCALE
DATE: 9/24/2024



VILLAGE OF HOMEWOOD 2024 SEWER LINING PROJECT

VILLAGE OF HOMEWOOD
NOT TO SCALE

DATE: 9/24/2024



05050