

PLAN COMMISSION PRESENTATION
AT VILLAGE OF HOMEWOOD
02/10/2022

HOMWOOD BREWING COMPANY, 18225 DIXIE HIGHWAY, HOMEWOOD, ILLINOIS

LINDEN GROUP CROSS TOWN
ARCHITECTS DESIGN+BUILD

DATE: 02-10-2022
PROJECT NO.: 2021-0203



HOMEWOOD BREWING COMPANY, 18225 DIXIE HIGHWAY, HOMEWOOD, ILLINOIS

EXISTING AERIAL VIEW

LINDEN GROUP CROSS TOWN
ARCHITECTS DESIGN+BUILD

DATE: 02-10-2022
PROJECT NO.: 2021-0203



LOOKING SOUTH ON DIXIE HWY.



LOOKING NORTH ON DIXIE HWY.



LOOKING AT MILLER COURT



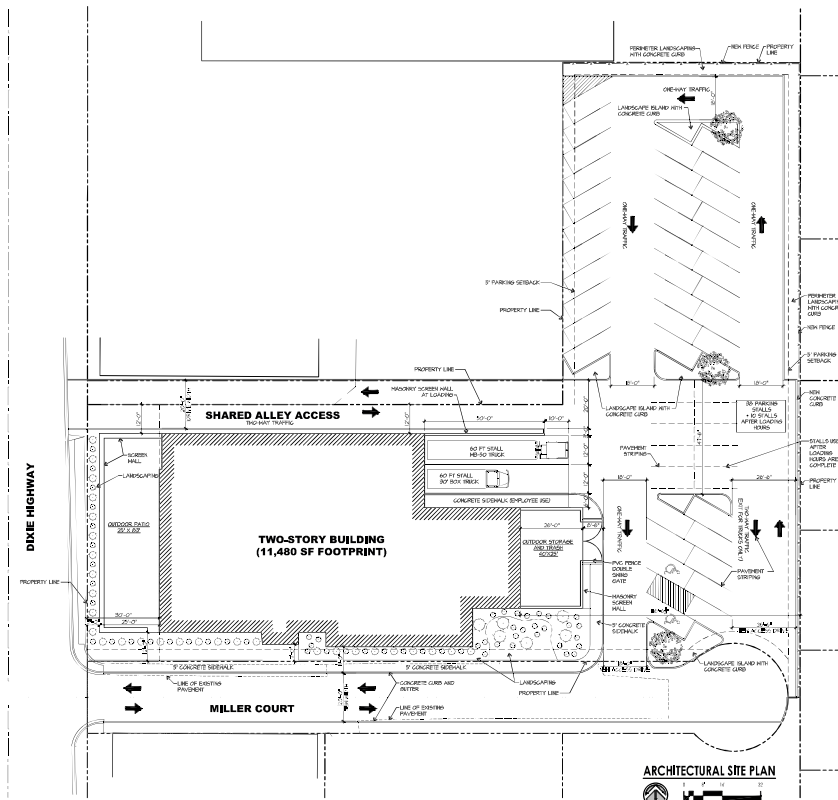
MILLER COURT

HOMWOOD BREWING COMPANY, 18225 DIXIE HIGHWAY, HOMWOOD, ILLINOIS

EXISTING STREET VIEWS

LINDEN GROUP **CROSS TOWN**
ARCHITECTS DESIGN+BUILD

DATE: 02-10-2022
PROJECT NO.: 2021-0203



HOMESWOOD BREWING COMPANY, 18225 DIXIE HIGHWAY, HOMESWOOD, ILLINOIS

LINDENGROUP CROSS TOWN ARCHITECTS DESIGN+BUILD

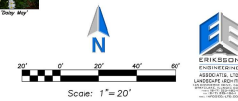
PRELIMINARY SITE PLAN

DATE: 02-10-2022
PROJECT NO.: 2021-0203

PLANT SCHEDULE			
CONCRETE	CONCRETE / CONCRETE	CONC	CONC
100	CONCRETE / CONCRETE	100	CONC
101	CONCRETE / CONCRETE	101	CONC
102	CONCRETE / CONCRETE	102	CONC
103	CONCRETE / CONCRETE	103	CONC
104	CONCRETE / CONCRETE	104	CONC
105	CONCRETE / CONCRETE	105	CONC
106	CONCRETE / CONCRETE	106	CONC
107	CONCRETE / CONCRETE	107	CONC
108	CONCRETE / CONCRETE	108	CONC
109	CONCRETE / CONCRETE	109	CONC
110	CONCRETE / CONCRETE	110	CONC
111	CONCRETE / CONCRETE	111	CONC
112	CONCRETE / CONCRETE	112	CONC
113	CONCRETE / CONCRETE	113	CONC
114	CONCRETE / CONCRETE	114	CONC
115	CONCRETE / CONCRETE	115	CONC
116	CONCRETE / CONCRETE	116	CONC
117	CONCRETE / CONCRETE	117	CONC
118	CONCRETE / CONCRETE	118	CONC
119	CONCRETE / CONCRETE	119	CONC
120	CONCRETE / CONCRETE	120	CONC
121	CONCRETE / CONCRETE	121	CONC
122	CONCRETE / CONCRETE	122	CONC
123	CONCRETE / CONCRETE	123	CONC
124	CONCRETE / CONCRETE	124	CONC
125	CONCRETE / CONCRETE	125	CONC
126	CONCRETE / CONCRETE	126	CONC
127	CONCRETE / CONCRETE	127	CONC
128	CONCRETE / CONCRETE	128	CONC
129	CONCRETE / CONCRETE	129	CONC
130	CONCRETE / CONCRETE	130	CONC
131	CONCRETE / CONCRETE	131	CONC
132	CONCRETE / CONCRETE	132	CONC
133	CONCRETE / CONCRETE	133	CONC
134	CONCRETE / CONCRETE	134	CONC
135	CONCRETE / CONCRETE	135	CONC
136	CONCRETE / CONCRETE	136	CONC
137	CONCRETE / CONCRETE	137	CONC
138	CONCRETE / CONCRETE	138	CONC
139	CONCRETE / CONCRETE	139	CONC
140	CONCRETE / CONCRETE	140	CONC
141	CONCRETE / CONCRETE	141	CONC
142	CONCRETE / CONCRETE	142	CONC
143	CONCRETE / CONCRETE	143	CONC
144	CONCRETE / CONCRETE	144	CONC
145	CONCRETE / CONCRETE	145	CONC
146	CONCRETE / CONCRETE	146	CONC
147	CONCRETE / CONCRETE	147	CONC
148	CONCRETE / CONCRETE	148	CONC
149	CONCRETE / CONCRETE	149	CONC
150	CONCRETE / CONCRETE	150	CONC
151	CONCRETE / CONCRETE	151	CONC
152	CONCRETE / CONCRETE	152	CONC
153	CONCRETE / CONCRETE	153	CONC
154	CONCRETE / CONCRETE	154	CONC
155	CONCRETE / CONCRETE	155	CONC
156	CONCRETE / CONCRETE	156	CONC
157	CONCRETE / CONCRETE	157	CONC
158	CONCRETE / CONCRETE	158	CONC
159	CONCRETE / CONCRETE	159	CONC
160	CONCRETE / CONCRETE	160	CONC
161	CONCRETE / CONCRETE	161	CONC
162	CONCRETE / CONCRETE	162	CONC
163	CONCRETE / CONCRETE	163	CONC
164	CONCRETE / CONCRETE	164	CONC
165	CONCRETE / CONCRETE	165	CONC
166	CONCRETE / CONCRETE	166	CONC
167	CONCRETE / CONCRETE	167	CONC
168	CONCRETE / CONCRETE	168	CONC
169	CONCRETE / CONCRETE	169	CONC
170	CONCRETE / CONCRETE	170	CONC
171	CONCRETE / CONCRETE	171	CONC
172	CONCRETE / CONCRETE	172	CONC
173	CONCRETE / CONCRETE	173	CONC
174	CONCRETE / CONCRETE	174	CONC
175	CONCRETE / CONCRETE	175	CONC
176	CONCRETE / CONCRETE	176	CONC
177	CONCRETE / CONCRETE	177	CONC
178	CONCRETE / CONCRETE	178	CONC
179	CONCRETE / CONCRETE	179	CONC
180	CONCRETE / CONCRETE	180	CONC
181	CONCRETE / CONCRETE	181	CONC
182	CONCRETE / CONCRETE	182	CONC
183	CONCRETE / CONCRETE	183	CONC
184	CONCRETE / CONCRETE	184	CONC
185	CONCRETE / CONCRETE	185	CONC
186	CONCRETE / CONCRETE	186	CONC

SITE MATERIALS SCHEDULE

	<u>MILK</u>	3,043 SF
	<u>PAVING</u>	2,137 SF
	<u>ASPHALT</u>	31,790 SF



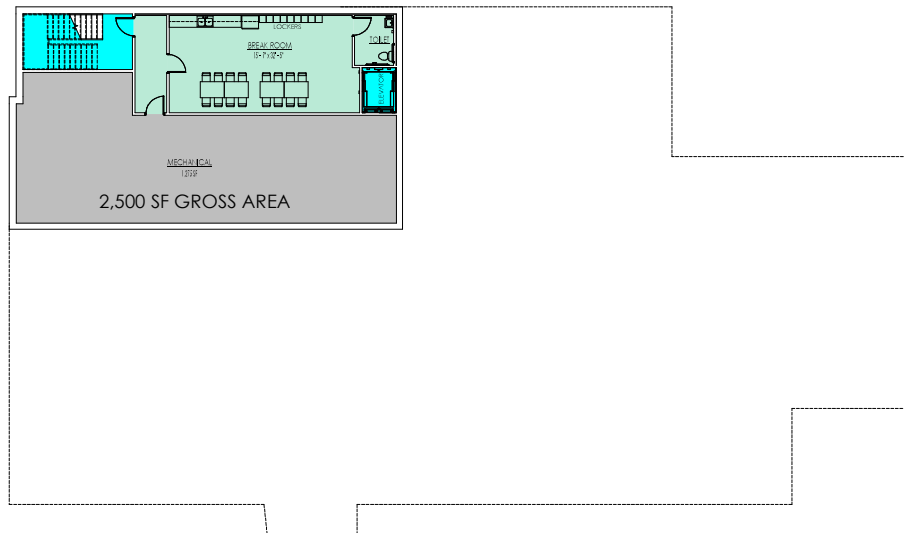
GROSS BUILDING AREA	
FIRST FLOOR	11,493 SF
MEZZANINE FLOOR	3,071 SF
GROSS TOTAL	14,564 SF

FIRST FLOOR	11,493 SF
MEZZANINE FLOOR	3,071 SF
GROSS TOTAL	14,564 SF



FIRST FLOOR PLAN

DATE: 02-10-2022
PROJECT NO.: 2021-0203



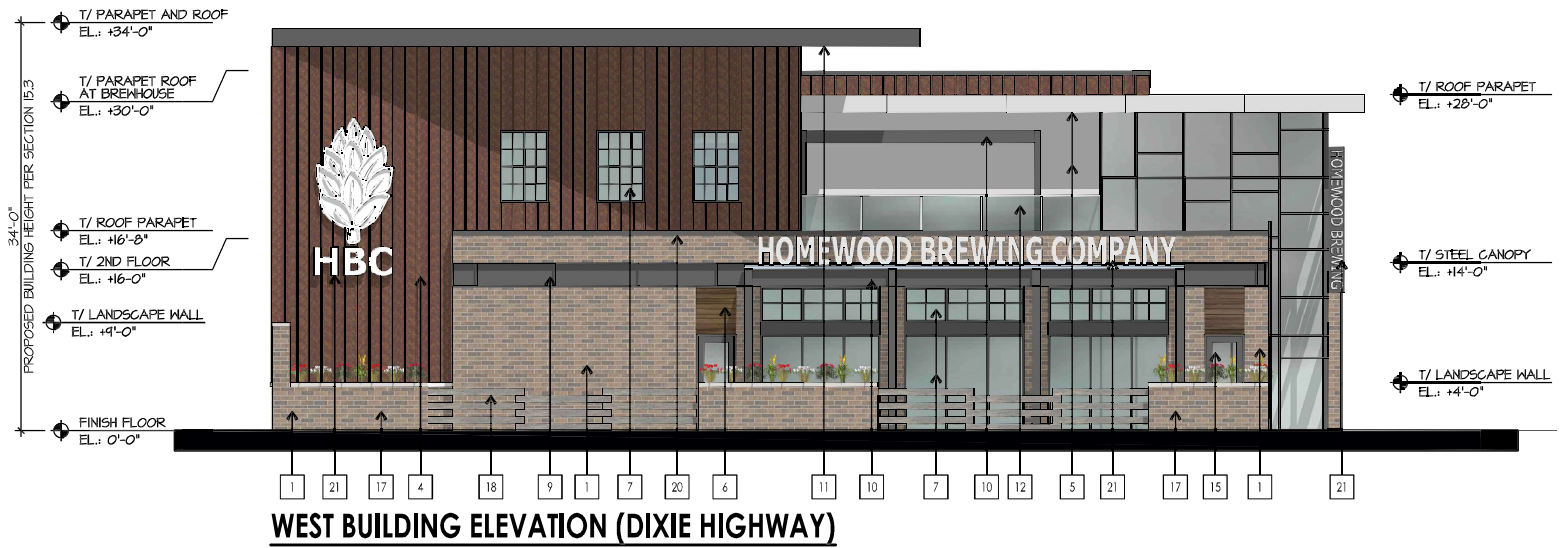


HOMWOOD BREWING COMPANY, 18225 DIXIE HIGHWAY, HOMEWOOD, ILLINOIS

LINDEN GROUP **CROSS TOWN**
ARCHITECTS DESIGN+BUILD

RENDERED VIEW OF PROPOSED BUILDING

DATE: 02-10-2022
PROJECT NO.: 2021-0203



ELEVATION KEYNOTES

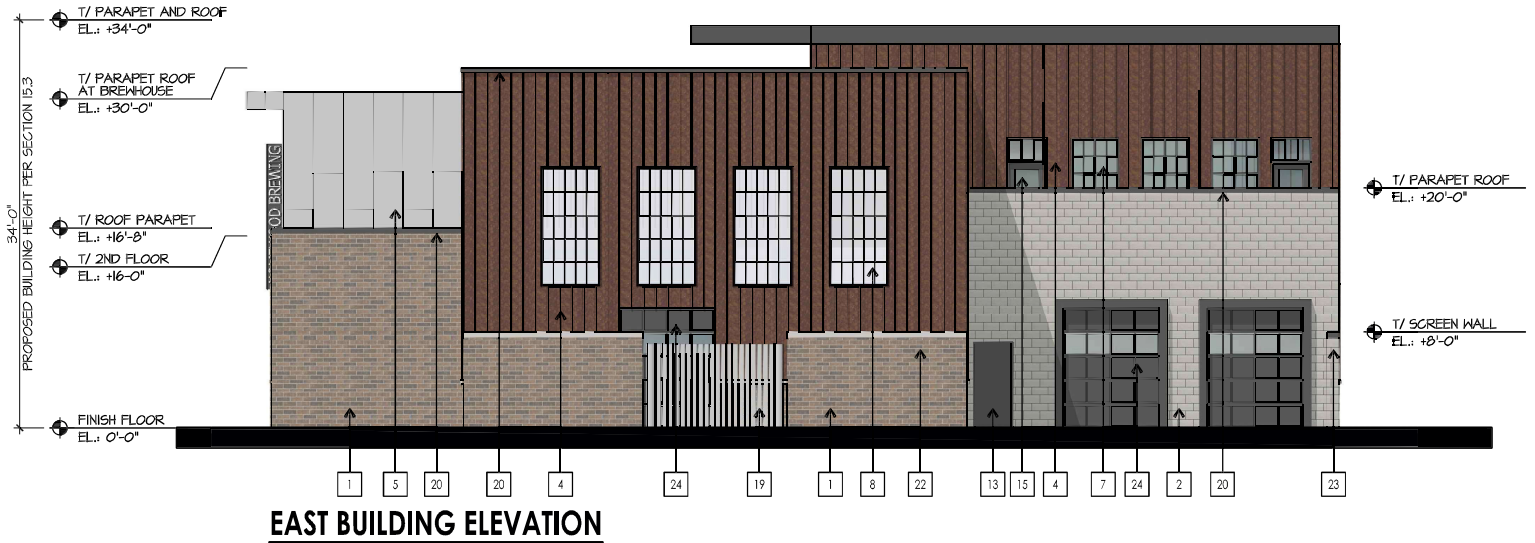
1	3-5/8" MASONRY VENEER	7	ALUMINUM AND CLEAR GLASS STOREFRONT WINDOW SYSTEM	13	PAINTED HOLLOW METAL DOOR AND FRAME	19	PVC FENCE/GATE AT TRASH ENCLOSURE
2	BURNISHED FACE CONCRETE MASONRY UNIT	8	INSULATED, LIGHT TRANSMITTING WINDOW PANEL SYSTEM	14	STAINED WOOD DOOR AND METAL FRAME	20	PRE-FINISHED METAL COPING
3	CAST STONE SILL	9	PAINTED STEEL CHANNEL INSET INTO MASONRY WALL	15	ALUMINUM AND CLEAR GLASS STOREFRONT DOOR	21	BUILDING SIGNAGE (DESIGN NOT FINAL) - ALL SIGNAGE UNDER SEPARATE PERMIT
4	TYPE 1 METAL PANEL CLADDING	10	CANOPY STRUCTURE WITH PAINTED STEEL WIDE FLANGE COLUMNS AND BEAMS	16	OVERHEAD GARAGE DOOR WITH VISION WINDOWS	22	MASONRY TRASH ENCLOSURE WITH CAST STONE COPING
5	TYPE 2 METAL PANEL CLADDING	11	PROJECTED PRE-FINISHED METAL CLADDIED ROOF ELEMENT WITH WOOD SOFFIT	17	MASONRY VENEER LANDSCAPE WALL WITH CAST STONE CAP AND PLANTINGS	23	MASONRY SCREENING WALL AT LOADING WITH METAL COPING
6	"WOOD" LOOK LINEAR CLADDING	12	CLAR GLASS RAILINGS AT 2ND STORY TERRACE	18	STACKED (AS SHOWN) TIMBER WOOD BEAMS LANDSCAPE WALL	24	OVERHEAD GARAGE DOOR (METAL CLADDIED)

HOMEWOOD BREWING COMPANY, 18225 DIXIE HIGHWAY, HOMEWOOD, ILLINOIS

WEST BUILDING ELEVATION

LINDENGROUP **CROSS/TOWN**
ARCHITECTS DESIGN+BUILD

DATE: 02-10-2022
PROJECT NO.: 2021-0203



ELEVATION KEYNOTES

1	3-5/8" MASONRY VENEER	7	ALUMINUM AND CLEAR GLASS STOREFRONT WINDOW SYSTEM	13	PAINTED HOLLOW METAL DOOR AND FRAME	19	PVC FENCE/GATE AT TRASH ENCLOSURE
2	BURNISHED FACE CONCRETE MASONRY UNIT	8	INSULATED, LIGHT TRANSMITTING WINDOW PANEL SYSTEM	14	STAINED WOOD DOOR AND METAL FRAME	20	PRE-FINISHED METAL COPING
3	CAST STONE SILL	9	PAINTED STEEL CHANNEL INSET INTO MASONRY WALL	15	ALUMINUM AND CLEAR GLASS STOREFRONT DOOR	21	BUILDING SIGNAGE (DESIGN NOT FINAL) - ALL SIGNAGE UNDER SEPARATE PERMIT
4	TYPE 1 METAL PANEL CLADDING	10	CANOPY STRUCTURE WITH PAINTED STEEL WIDE FLANGE COLUMNS AND BEAMS	16	OVERHEAD GARAGE DOOR WITH VISION WINDOWS	22	MASONRY TRASH ENCLOSURE WITH CAST STONE COPING
5	TYPE 2 METAL PANEL CLADDING	11	PROJECTED PRE-FINISHED METAL CLADDIED ROOF ELEMENT WITH WOOD SOFFIT	17	MASONRY VENEER LANDSCAPE WALL WITH CAST STONE CAP AND PLANTINGS	23	MASONRY SCREENING WALL AT LOADING WITH METAL COPING
6	"WOOD" LOOK LINEAR CLADDING	12	CLAR GLASS RAILINGS AT 2ND STORY TERRACE	18	STACKED (AS SHOWN) TIMBER WOOD BEAMS LANDSCAPE WALL	24	OVERHEAD GARAGE DOOR (METAL CLADDIED)

HOMEWOOD BREWING COMPANY, 18225 DIXIE HIGHWAY, HOMEWOOD, ILLINOIS

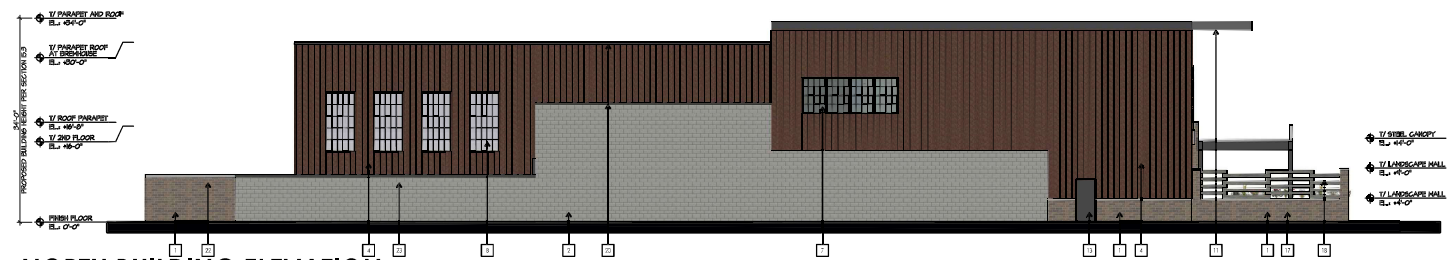
EAST BUILDING ELEVATION

LINDENGROUP CROSS TOWN
ARCHITECTS DESIGN+BUILD

DATE: 02-10-2022
PROJECT NO.: 2021-0203



SOUTH BUILDING ELEVATION



NORTH BUILDING ELEVATION

ELEVATION KEYNOTES

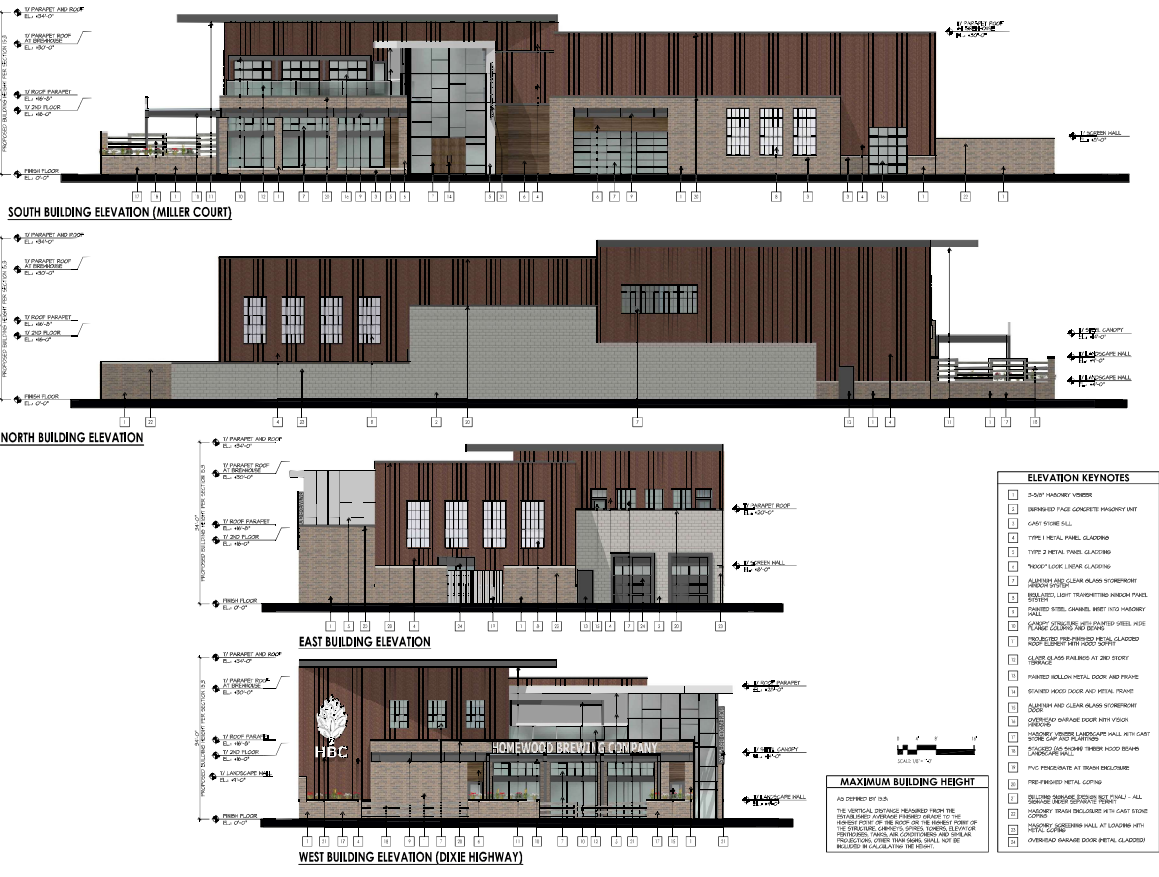
1	3-5/8" MASONRY VENEER	7	ALUMINUM AND CLEAR GLASS STOREFRONT WINDOW SYSTEM	13	PAINTED HOLLOW METAL DOOR AND FRAME	19	PVC FENCE/GATE AT TRASH ENCLOSURE
2	BURNISHED FACE CONCRETE MASONRY UNIT	8	INSULATED, LIGHT TRANSMITTING WINDOW PANEL SYSTEM	14	STAINED WOOD DOOR AND METAL FRAME	20	PRE-FINISHED METAL COPING
3	CAST STONE SILL	9	PAINTED STEEL CHANNEL INSET INTO MASONRY WALL	15	ALUMINUM AND CLEAR GLASS STOREFRONT DOOR	21	BUILDING SIGNAGE (DESIGN NOT FINAL) - ALL SIGNAGE UNDER SEPARATE PERMIT
4	TYPE 1 METAL PANEL CLADDING	10	CANOPY STRUCTURE WITH PAINTED STEEL WIDE FLANGE COLUMNS AND BEAMS	16	OVERHEAD GARAGE DOOR WITH VISION WINDOWS	22	MASONRY TRASH ENCLOSURE WITH CAST STONE COPING
5	TYPE 2 METAL PANEL CLADDING	11	PROJECTED PRE-FINISHED METAL CLADDED ROOF ELEMENT WITH WOOD SOFFIT	17	MASONRY VENEER LANDSCAPE WALL WITH CAST STONE CAP AND PLANTINGS	23	MASONRY SCREENING WALL AT LOADING WITH METAL COPING
6	"WOOD" LOOK LINEAR CLADDING	12	CLAR GLASS RAILINGS AT 2ND STORY TERRACE	18	STACKED (AS SHOWN) TIMBER WOOD BEAMS LANDSCAPE WALL	24	OVERHEAD GARAGE DOOR (METAL CLADDED)

HOMWOOD BREWING COMPANY, 18225 DIXIE HIGHWAY, HOMWOOD, ILLINOIS

SOUTH & NORTH BUILDING ELEVATIONS

LINDENGROUP CROSS TOWN
ARCHITECTS DESIGN+BUILD

DATE: 02-10-2022
PROJECT NO.: 2021-0203



ELEVATION KEYNOTES	
1	2-SIDED HANDMADE VENEER
2	EXPOSED FACE CONCRETE HANDMADE UNIT
3	CANYON STONE SILL
4	TYPE 1 METAL PANEL GLAZING
5	TYPE 2 METAL PANEL GLAZING
6	WOOD LUMBER LINER GLAZING
7	ALUMINUM GLASS PANEL SYSTEM
8	ALUMINUM GLASS PANEL SYSTEM
9	ALUMINUM GLASS PANEL SYSTEM
10	ALUMINUM GLASS PANEL SYSTEM
11	ALUMINUM GLASS PANEL SYSTEM
12	ALUMINUM GLASS PANEL SYSTEM
13	ALUMINUM GLASS PANEL SYSTEM
14	ALUMINUM GLASS PANEL SYSTEM
15	ALUMINUM GLASS PANEL SYSTEM
16	ALUMINUM GLASS PANEL SYSTEM
17	ALUMINUM GLASS PANEL SYSTEM
18	ALUMINUM GLASS PANEL SYSTEM
19	ALUMINUM GLASS PANEL SYSTEM
20	ALUMINUM GLASS PANEL SYSTEM
21	ALUMINUM GLASS PANEL SYSTEM
22	ALUMINUM GLASS PANEL SYSTEM
23	ALUMINUM GLASS PANEL SYSTEM
24	ALUMINUM GLASS PANEL SYSTEM
25	ALUMINUM GLASS PANEL SYSTEM
26	ALUMINUM GLASS PANEL SYSTEM
27	ALUMINUM GLASS PANEL SYSTEM
28	ALUMINUM GLASS PANEL SYSTEM
29	ALUMINUM GLASS PANEL SYSTEM
30	ALUMINUM GLASS PANEL SYSTEM
31	ALUMINUM GLASS PANEL SYSTEM
32	ALUMINUM GLASS PANEL SYSTEM
33	ALUMINUM GLASS PANEL SYSTEM
34	ALUMINUM GLASS PANEL SYSTEM
35	ALUMINUM GLASS PANEL SYSTEM
36	ALUMINUM GLASS PANEL SYSTEM
37	ALUMINUM GLASS PANEL SYSTEM
38	ALUMINUM GLASS PANEL SYSTEM
39	ALUMINUM GLASS PANEL SYSTEM
40	ALUMINUM GLASS PANEL SYSTEM
41	ALUMINUM GLASS PANEL SYSTEM
42	ALUMINUM GLASS PANEL SYSTEM
43	ALUMINUM GLASS PANEL SYSTEM
44	ALUMINUM GLASS PANEL SYSTEM
45	ALUMINUM GLASS PANEL SYSTEM
46	ALUMINUM GLASS PANEL SYSTEM
47	ALUMINUM GLASS PANEL SYSTEM
48	ALUMINUM GLASS PANEL SYSTEM
49	ALUMINUM GLASS PANEL SYSTEM
50	ALUMINUM GLASS PANEL SYSTEM
51	ALUMINUM GLASS PANEL SYSTEM
52	ALUMINUM GLASS PANEL SYSTEM
53	ALUMINUM GLASS PANEL SYSTEM
54	ALUMINUM GLASS PANEL SYSTEM
55	ALUMINUM GLASS PANEL SYSTEM
56	ALUMINUM GLASS PANEL SYSTEM
57	ALUMINUM GLASS PANEL SYSTEM
58	ALUMINUM GLASS PANEL SYSTEM
59	ALUMINUM GLASS PANEL SYSTEM
60	ALUMINUM GLASS PANEL SYSTEM
61	ALUMINUM GLASS PANEL SYSTEM
62	ALUMINUM GLASS PANEL SYSTEM
63	ALUMINUM GLASS PANEL SYSTEM
64	ALUMINUM GLASS PANEL SYSTEM
65	ALUMINUM GLASS PANEL SYSTEM
66	ALUMINUM GLASS PANEL SYSTEM
67	ALUMINUM GLASS PANEL SYSTEM
68	ALUMINUM GLASS PANEL SYSTEM
69	ALUMINUM GLASS PANEL SYSTEM
70	ALUMINUM GLASS PANEL SYSTEM
71	ALUMINUM GLASS PANEL SYSTEM
72	ALUMINUM GLASS PANEL SYSTEM
73	ALUMINUM GLASS PANEL SYSTEM
74	ALUMINUM GLASS PANEL SYSTEM
75	ALUMINUM GLASS PANEL SYSTEM
76	ALUMINUM GLASS PANEL SYSTEM
77	ALUMINUM GLASS PANEL SYSTEM
78	ALUMINUM GLASS PANEL SYSTEM
79	ALUMINUM GLASS PANEL SYSTEM
80	ALUMINUM GLASS PANEL SYSTEM
81	ALUMINUM GLASS PANEL SYSTEM
82	ALUMINUM GLASS PANEL SYSTEM
83	ALUMINUM GLASS PANEL SYSTEM
84	ALUMINUM GLASS PANEL SYSTEM
85	ALUMINUM GLASS PANEL SYSTEM
86	ALUMINUM GLASS PANEL SYSTEM
87	ALUMINUM GLASS PANEL SYSTEM
88	ALUMINUM GLASS PANEL SYSTEM
89	ALUMINUM GLASS PANEL SYSTEM
90	ALUMINUM GLASS PANEL SYSTEM
91	ALUMINUM GLASS PANEL SYSTEM
92	ALUMINUM GLASS PANEL SYSTEM
93	ALUMINUM GLASS PANEL SYSTEM
94	ALUMINUM GLASS PANEL SYSTEM
95	ALUMINUM GLASS PANEL SYSTEM
96	ALUMINUM GLASS PANEL SYSTEM
97	ALUMINUM GLASS PANEL SYSTEM
98	ALUMINUM GLASS PANEL SYSTEM
99	ALUMINUM GLASS PANEL SYSTEM
100	ALUMINUM GLASS PANEL SYSTEM

HOMWOOD BREWING COMPANY, 18225 DIXIE HIGHWAY, HOMWOOD, ILLINOIS

PRELIMINARY BUILDING ELEVATIONS

LINDEN GROUP ARCHITECTS CROSS TOWN DESIGN + BUILD

DATE: 02-10-2022
PROJECT NO.: 2021-0203



HOMEWOOD BREWING COMPANY, 18225 DIXIE HIGHWAY, HOMEWOOD, ILLINOIS

RENDERED VIEW AT DIXIE HWY.

LINDEN GROUP **CROSS TOWN**
ARCHITECTS DESIGN+BUILD

DATE: 02-10-2022
PROJECT NO.: 2021-0203



HOMEWOOD BREWING COMPANY, 18225 DIXIE HIGHWAY, HOMEWOOD, ILLINOIS

RENDERED VIEW AT MILLER CT.

LINDEN GROUP **CROSS TOWN**
ARCHITECTS DESIGN+BUILD

DATE: 02-10-2022
PROJECT NO.: 2021-0203



HOMWOOD BREWING COMPANY, 18225 DIXIE HIGHWAY, HOMWOOD, ILLINOIS

RENDERED VIEW AT DIXIE HWY. / MILLER CT.

LINDEN GROUP **CROSS TOWN**
ARCHITECTS DESIGN+BUILD

DATE: 02-10-2022
PROJECT NO.: 2021-0203