

*Leadership to  
Foster, Enhance and  
Promote Economic  
Development*

# KPEDD Project Update

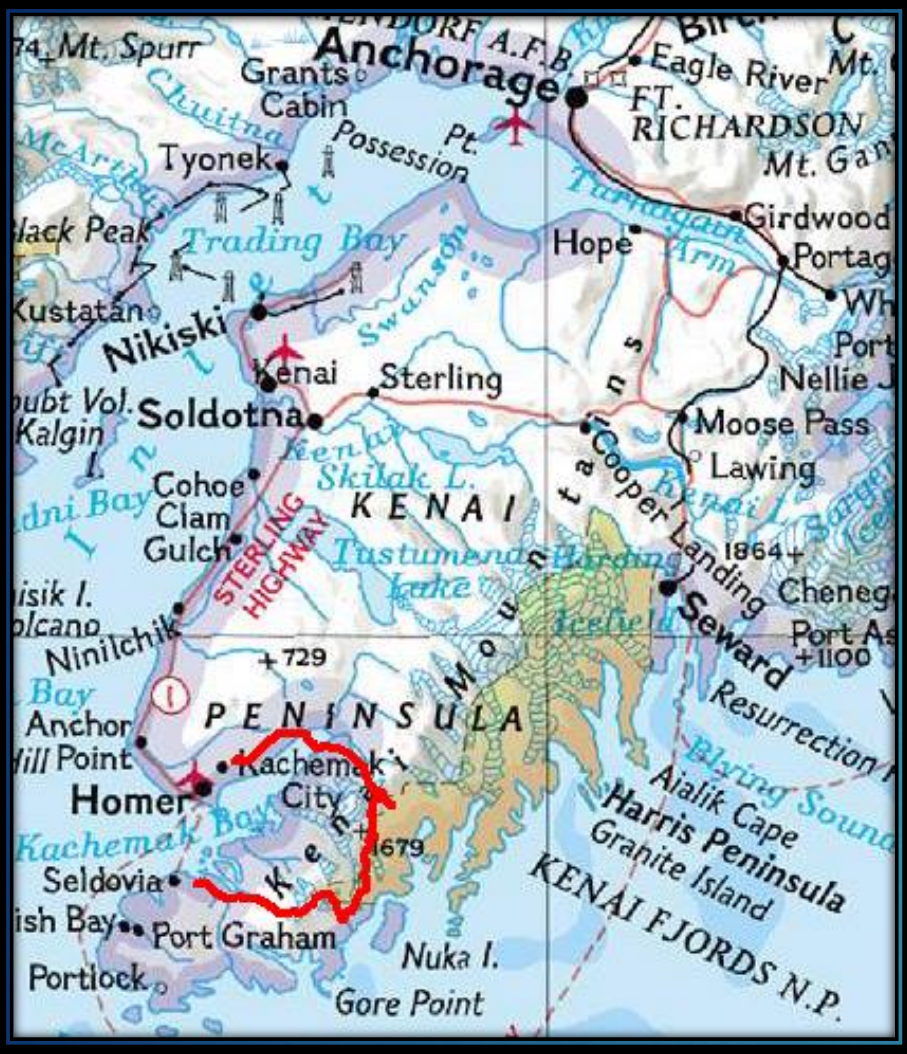
TIM DILLON, EXECUTIVE DIRECTOR

[WWW.KPEDD.ORG](http://WWW.KPEDD.ORG)

907-283-3335

# Who We Are

- 501 (C) 4 Regional Economic Development Organization
- Independent 13 Seat Diverse Regional Board of Directors
- Current Contracts Include EDA, Denali Commission, Manufacturing Extension Program & Kenai Peninsula Borough
- Partnerships With Federal, State & Local Communities





Kenai Peninsula  
Borough  
Comprehensive  
Economic  
Development  
Strategy 2019



Kenai Peninsula Economic  
Development District



In Partnership with the University of  
Alaska Center for Economic Development



Regional Partnerships

- Build ties to industry associations and communities
- Coordinate region-wide economic development with communities

Infrastructure and  
Technology

- Industry focused infrastructure
- Transportation infrastructure
- Expanded broadband access

Workforce and Human  
Capital

- Industry partnerships and voc-tech
- Workforce attraction and retention

Business Climate and  
Entrepreneurship

- Strengthen existing businesses through business retention and expansion
- Promote responsible development
- Develop entrepreneurial ecosystem

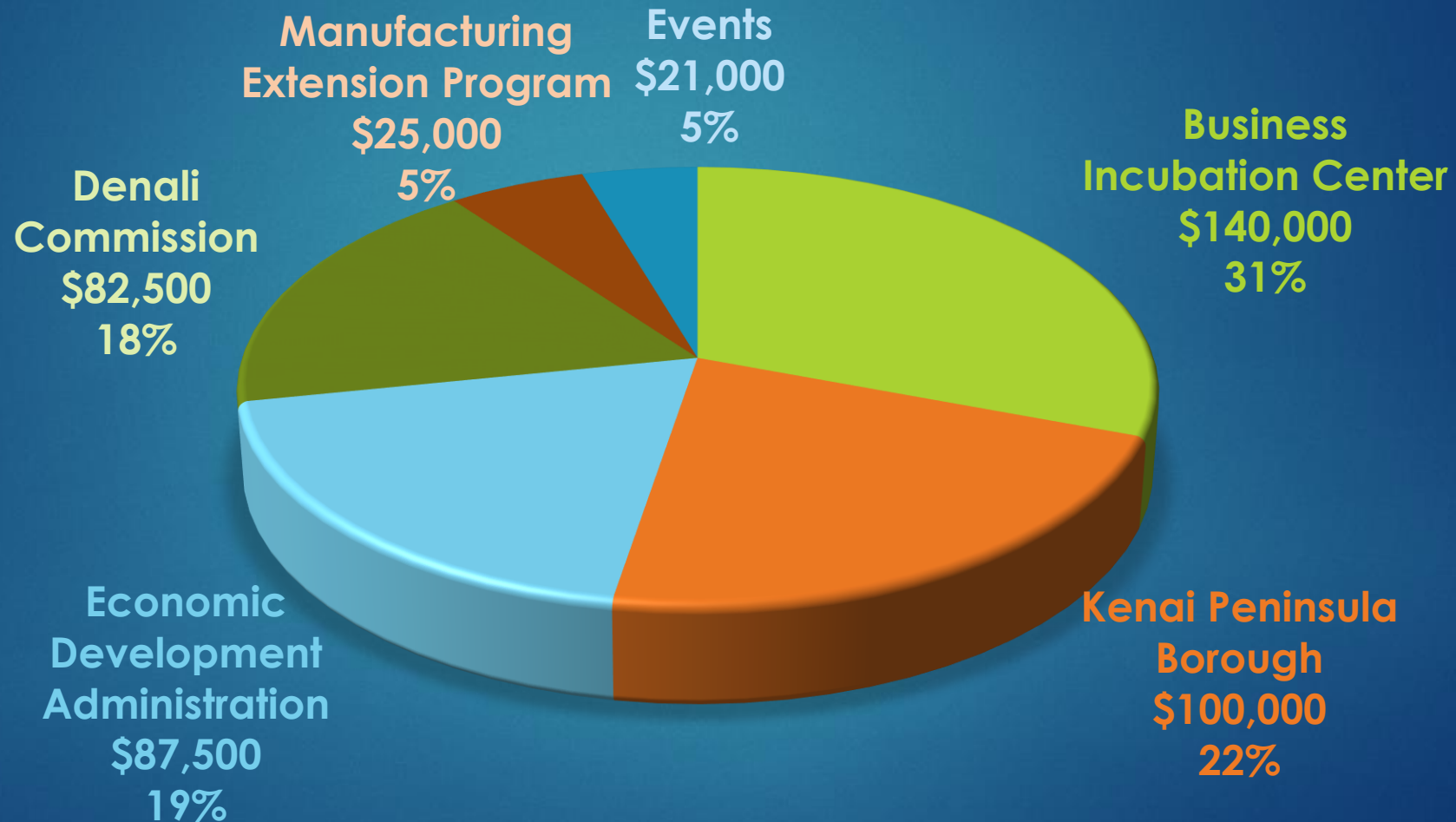
Quality of Place

- Develop Kenai Peninsula "brand" for residents, visitors, and businesses
- Promote expansion of recreational amenities and public access

Knowledge Creation  
and Dissemination

- Track and report economic and demographic trends
- Seek new venues to publicize findings

# FY 2021 Funding Sources





# DENALI COMMISSION

PARTNERING TO DEVELOP ALASKA'S  
BASIC INFRASTRUCTURE

**Noatak**

Photograph by Quantum Spatial

[HOME](#)

[ABOUT US ▾](#)

[STRATEGIC PLAN](#)

[WORK PLANS](#)

[PROGRAMS ▾](#)

[FUNDING REQUESTS](#)

[GRANTS](#)

[FINANCE ▾](#)

[CAREERS](#)

## DENALI COMMISSION STORY

Introduced by Congress in 1998, the Denali Commission is an independent federal agency designed to provide critical utilities, infrastructure, and economic support throughout Alaska. With the creation of the Denali Commission, Congress acknowledged the need for increased inter-agency cooperation and focus on Alaska's remote communities.

# Alaska Counts

2020 Census

A white outline map of the state of Alaska is positioned below the 'Alaska Counts' text. An orange graphic element, consisting of a horizontal line that turns downward into a V-shape, is placed over the map, with the '2020 Census' text positioned to its right.

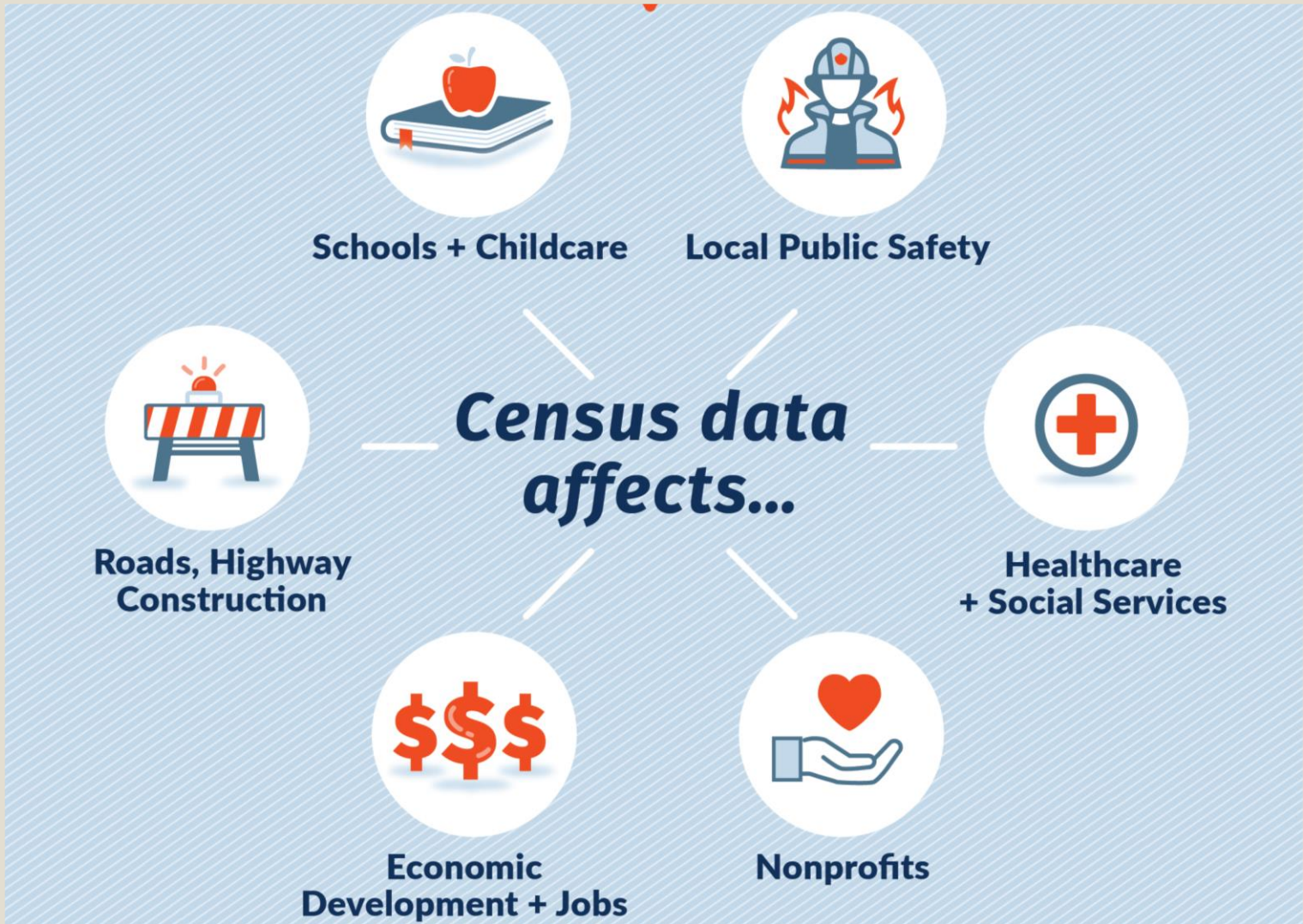
**2020 U.S. Census:**  
*Every Alaskan Counts*

Alaska's 2010 census participation Rate: 65%

The lowest in the nation

In 2020, Alaska will again be one of the hardest states to count





- Federal spending comprises 21.8% of state GDP.
- Non-profits receive 18% of the \$3.2 billion in direct federal funding.



# Share 5 Essential Messages:

## Help people understand that the Census:



### **Is confidential**

*Legal protections prevent Census Bureau staff from sharing personal data with any other person or agency*



### **Is important**

*The census affects every Alaska community by determining funding for everything from roads and airports to schools and health care*



### **Is easy to complete**

*10 questions +  
10 minutes =  
10 years of funding*

*online, by mail or by phone.*



**4**

**Will invite you to respond March 2020**

*March mailing*

*April 1 Census Day*

*If no response, census workers will follow up  
with additional mail or in person.*

*People in more remote areas of the southern Kenai will  
get hand-delivered census materials at their homes.*

**Census workers can disregard no trespassing  
signs! (but will leave if asked)**



**5**

**Asks simple questions**

*Number of people living at address*

*Name, gender, age, ethnicity of each*

*Do residents own or rent*

*Phone number (if follow up is needed)*

**No citizenship question!**



# Next Industry Outlook Forum

January 6<sup>th</sup> 2021 in  
Kenai





*Leadership to  
enhance, foster and  
promote economic  
development*

Tim Dillon  
Executive Director  
907-242-9709  
Tim@KPEDD.org