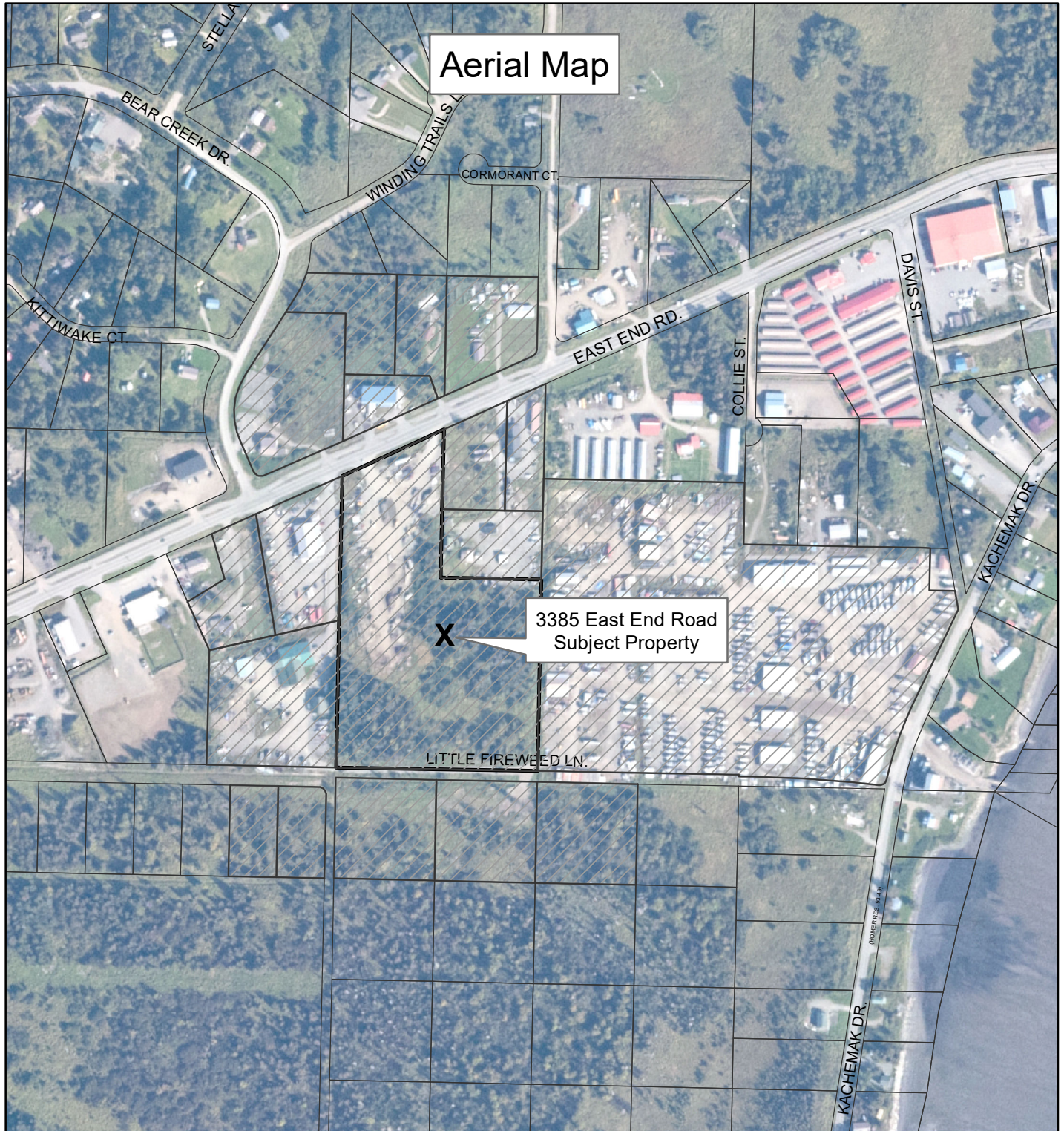


Aerial Map



City of Homer
Planning and Zoning Department

January 30, 2020

Request for CUP 20-04
to allow a 7,200 sq. ft.
equipment storage building

Marked Lots are w/in 300 feet
and property owners notified.

0 250 500 Feet



Disclaimer:
It is expressly understood the City of
Homer, its council, board,
departments, employees and agents are
not responsible for any errors or omissions
contained herein, or deductions, interpretations
or conclusions drawn therefrom.

photography from 2016