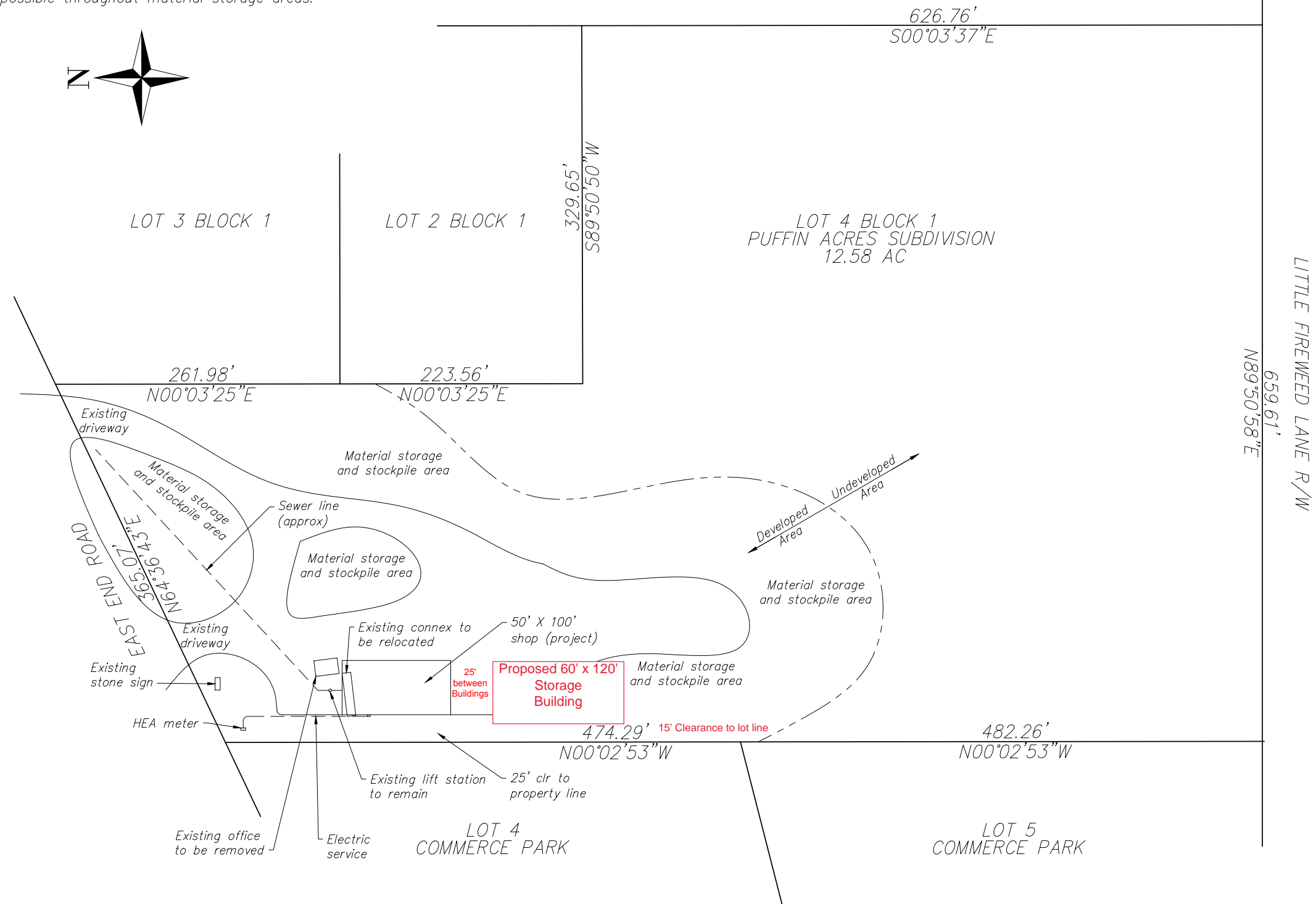


1. *Turning radii exceed 50 feet within driveway limits.*
2. *Driveways are two-way operational.*
3. *Snow storage possible throughout material storage areas.*



1" = 109'

$$\frac{626.76'}{S00^{\circ}03'37"E}$$

329.65'
S89°50'50"W

LOT 2 BLOCK 1

LOT 4 BLOCK 1
PUFFIN ACRES SUBDIVISION
12.58 AC

LITTLE FIREWEED LANE R/W
659.61'
N89°50'58"E

Site Plan Prepared by Buck Jones
V.P. East Road Services Inc.
907-299-1857
eastdrv@hotmail.com

EAST ROAD SERVICES BUILDING
3385 EAST END ROAD, HOMER, ALASKA
CONSTRUCTION DOCUMENTS

Revisions:

Date: 3/1-10-2020
 Drawn:
 Checked:
 Project:
 File Name:

Sheet Title:

SITE PLAN

Sheet:

S1.1

Sheet 1 of 9