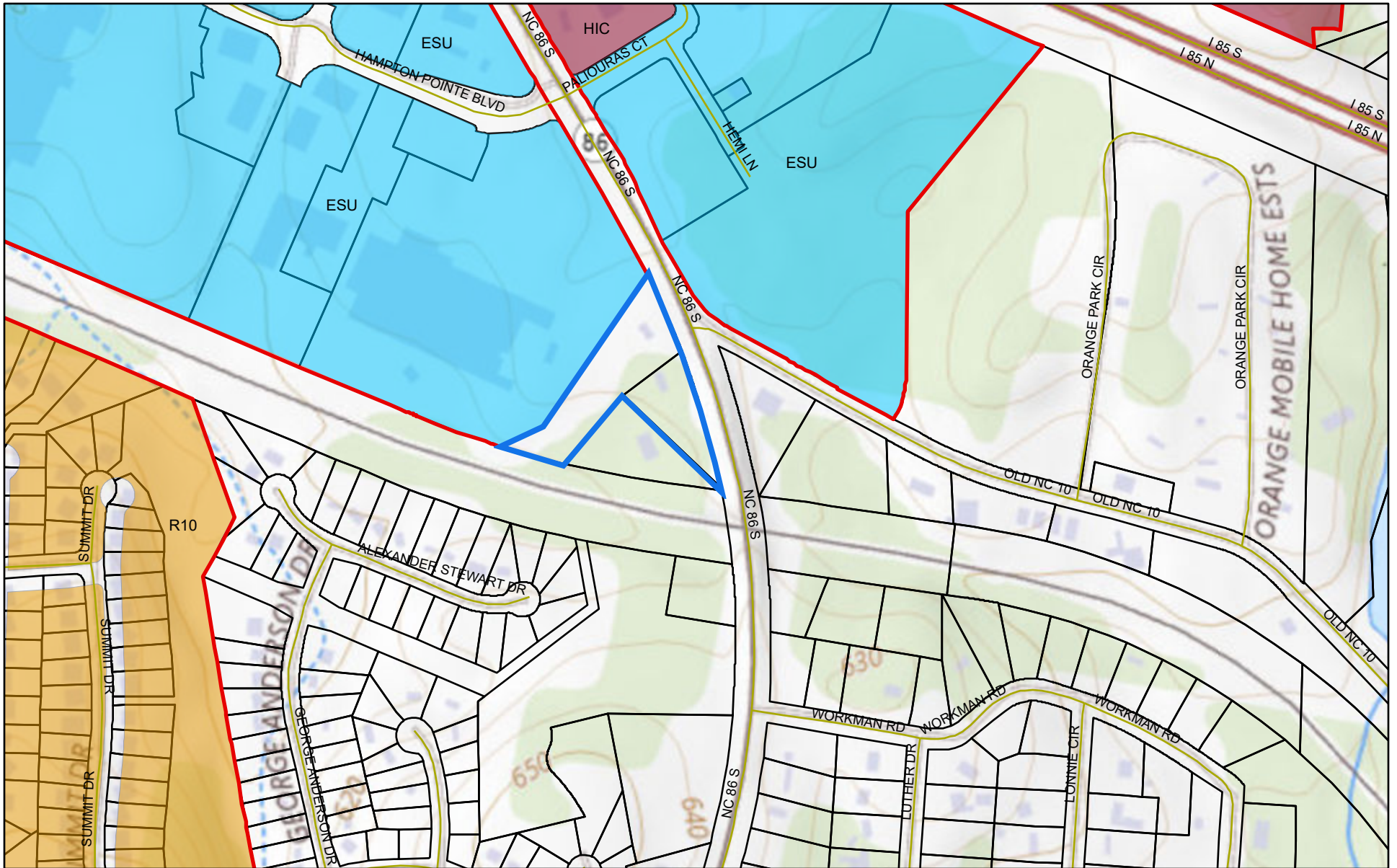
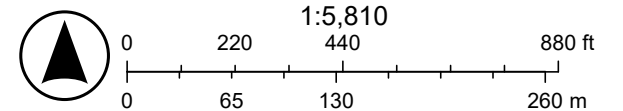


Zoning Map



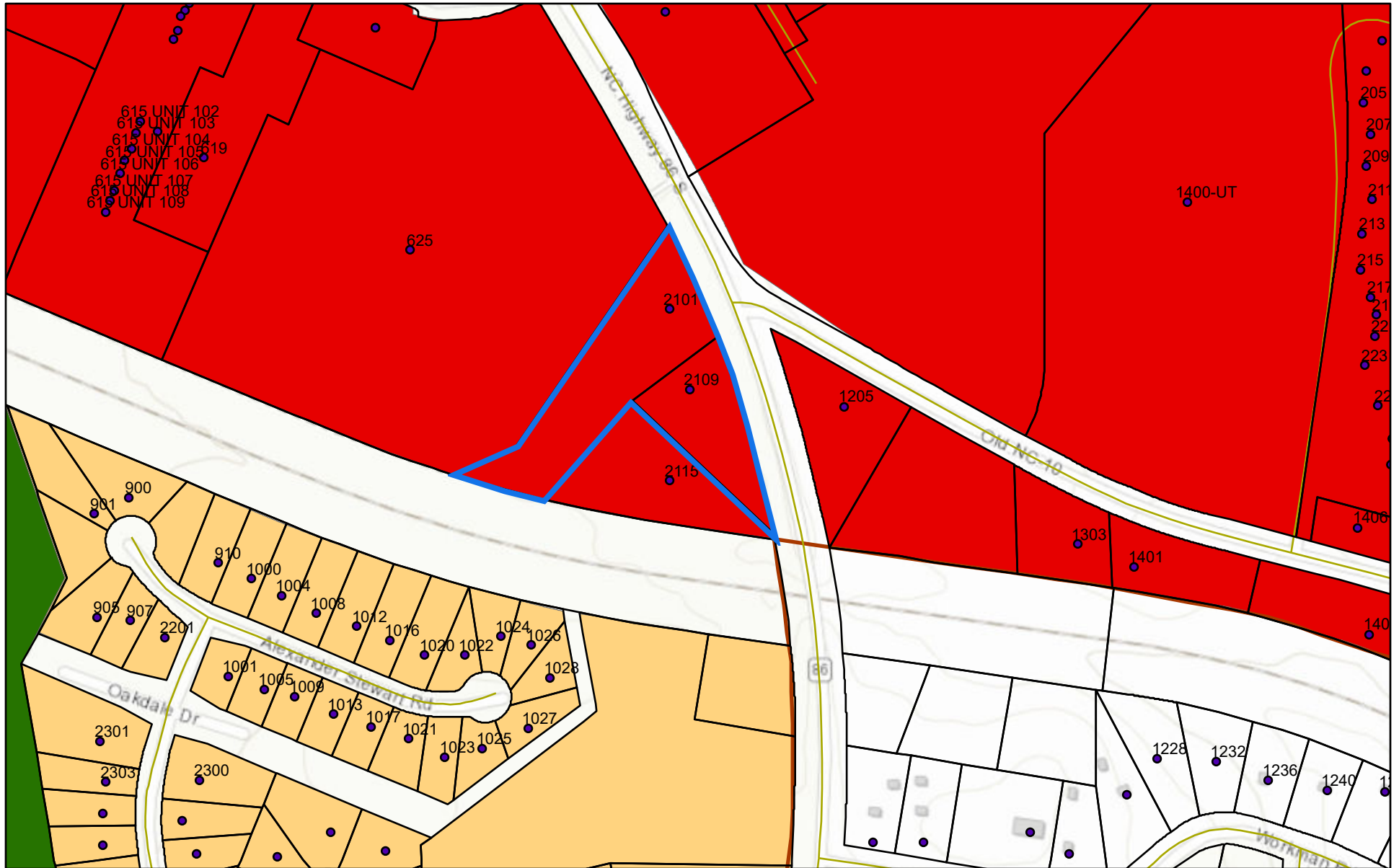
4/17/2026

- Streets
- Hillsborough Town Limits
- Zoning**
- ESU Entranceway Special Use
- HIC High Intensity Commercial
- R10 Residential 10,000 sf min
- Parcels
- Subject parcels (currently zoned in Orange County)



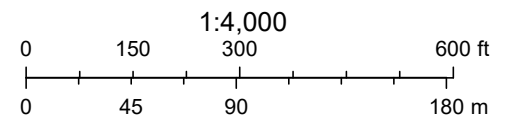
USGS The National Map: National Boundaries Dataset, 3DEP Elevation Program, Geographic Names Information System, National Hydrography

Future Land Use Map



4/17/2026, 1:37:12 PM

- Addresses
- Subject parcels
- Permanent Open Space
- Retail Services
- Parcels
- Medium-Density Residential
- Small Lot Residential
- Streets



Orange County, NC, State of North Carolina DOT, Esri, HERE, Garmin, INCREMENT P, USGS, EPA, USDA

Web AppBuilder for ArcGIS

Orange County, NC, State of North Carolina DOT, Esri, HERE, Garmin, INCREMENT P, USGS, EPA, USDA |