

ZONE 3 - Flow/Traffic Assistance

NOTE TO POLICE:

We are requesting security support at Zone 3 (map above) during the lantern walk (~5:45-7:30 PM).

VOLUNTEER INSTRUCTIONS:

- Bring to Zone 3: wagon, walkie talky, safety vest, flashlight, clip ropes, and the EXIT ONLY and NO ENTRY signs. This is a two-way traffic zone and the only opportunity for walkers to exit the walk early if needed.
- Stage the signs and clip ropes to barrier off Zone 3. The goal is for security to be able to ALLOW EARLY EXIT and DISCOURAGE new entries from this point. Please request new walkers begin the lantern walk from the Farmers Market Pavilion.
- Glow in the dark taped arrows + ground luminaries will be present on the boardwalk to signal two-way traffic and support event safety.
- Once the procession ends, please collect the rope, signs, tape, and luminaries from the boardwalk on your way back to the Farmers Market Pavilion.

Solstice

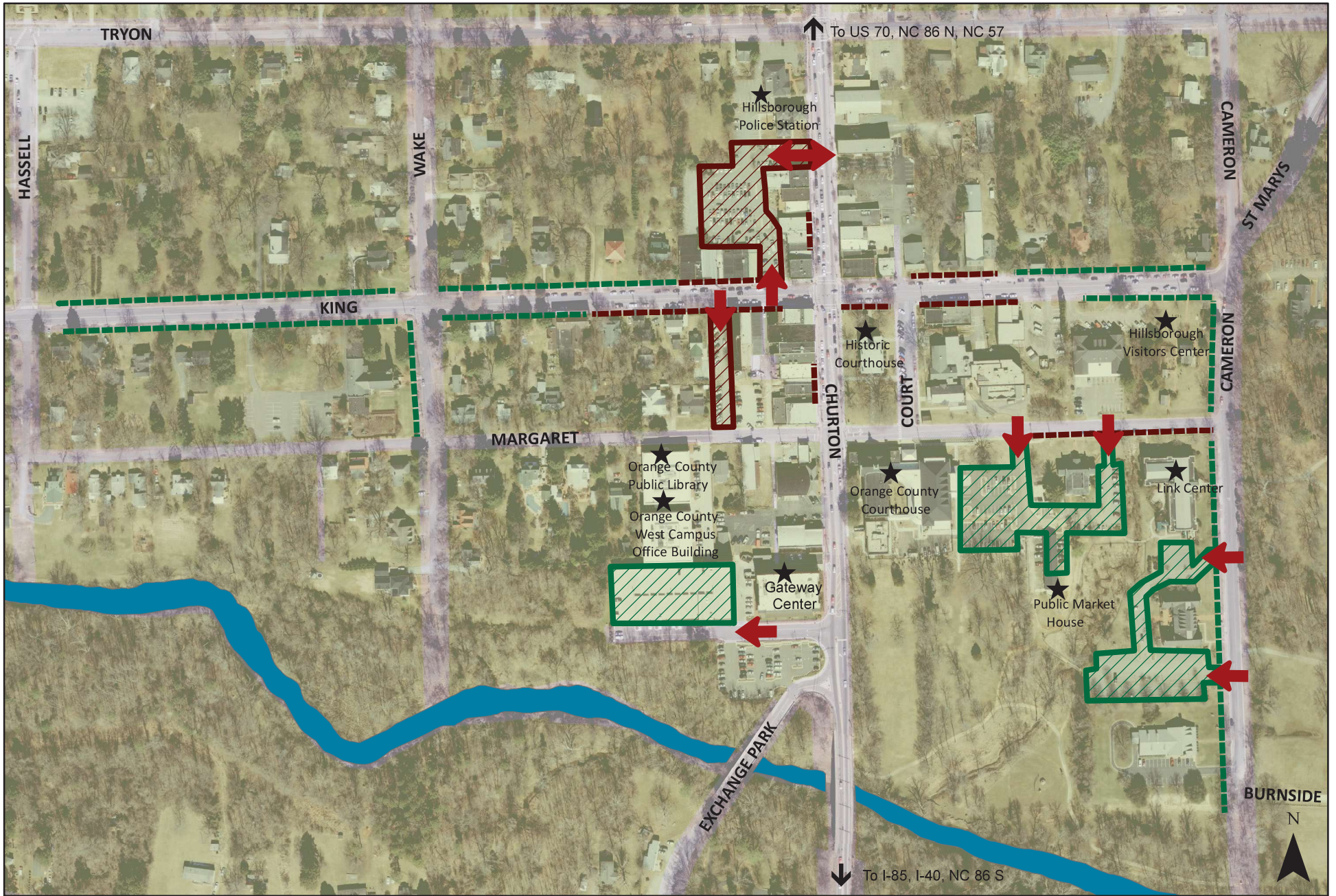
Lantern Walk & Market

Hillsborough, NC

HAC Info	Watcher Zone	Spiral of Light Labrynth
Safety Checkpoint	Picnic Area	Restrooms & Hand Washing
Police Security	Park Bench	
Artists	Two-Way Traffic	
Food & Beverage	Walking Bridge	
Live Music		



Dec. 21, 5-8 PM **WALK START: 5:45 PM**



Public Parking Options in Downtown Hillsborough

- On Street Public Parking, No Time Limit
 - On Street Public Parking, 3-hr Limit
 - Public Parking Lot-No Time Limit
 - Public Parking Lot 3-hr Limit
- Eno River