

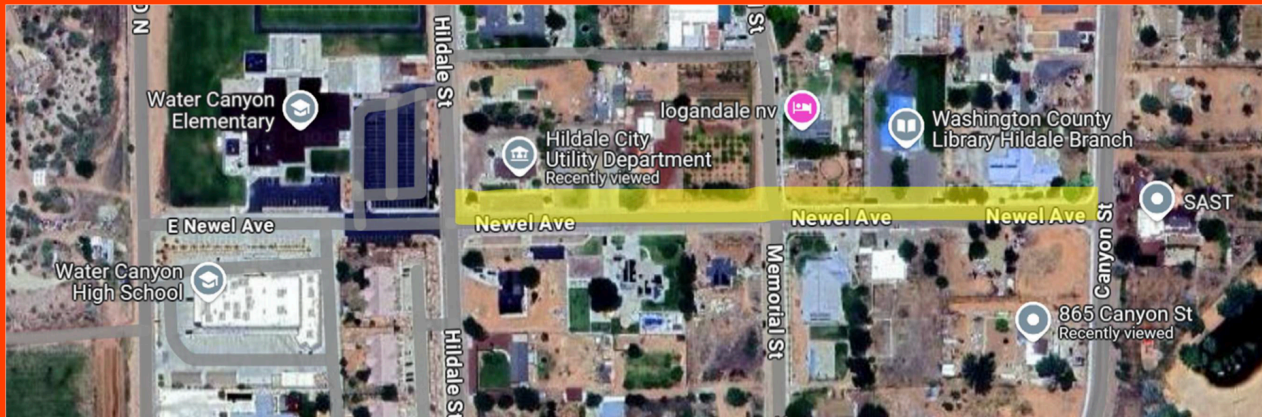
NEWEL AVENUE SAFE ROUTES TO SCHOOL IMPROVEMENTS

Agency: Hildale City, Water Canyon Elementary, & Community Partners
Grant Program: UDOT Safe Routes to School - FY 2027



Project Overview

- Location: Hildale (Rural Washington County), Newel Avenue, from Canyon Street to Hildale Street (~1,230 ft corridor)
- Scope Includes:
 - 800 feet of new 5-ft sidewalk
 - 2 ADA-compliant curb ramps (at school frontage and Memorial Street)
 - Minor curb/gutter work and driveway tie-ins
- Will create a continuous, predictable pedestrian path on the school/library route



Collaboration & Community Support

- Community-driven project with support from:
- Parents and residents
- PTA
- Short Creek Outdoors
- Creek Valley Health Clinic
- Hildale Library staff

Formal letters of support included



Project Budget & Funding Request

- **Construction (sidewalk, ramps, curb, drives):**
\$68,140
- **Construction engineering & admin:** \$26,000
- **Contingency:** \$15,000
- **Total Project Cost:**
\$109,140

Grant Request: \$109,140
OR \$101,751.23 After HC
Match of \$7,388.79



Project Schedule

- **Design & Permitting:** July 2026 – February 2027
- **Bid & Award:** May – June 2027
- **Construction:** July – October 2027

Project Completion:
November 1, 2027

Health & Demographical Context

- **Healthy Places Index score:** 26.6th percentile
- **Poverty rate:** 28.6%
- **Median household income:** \$62,727
- **Water Canyon Elementary is a Title I school;** 46.1% of students qualify for free/reduced lunch

Safe infrastructure encourages physical activity and addresses transportation equity



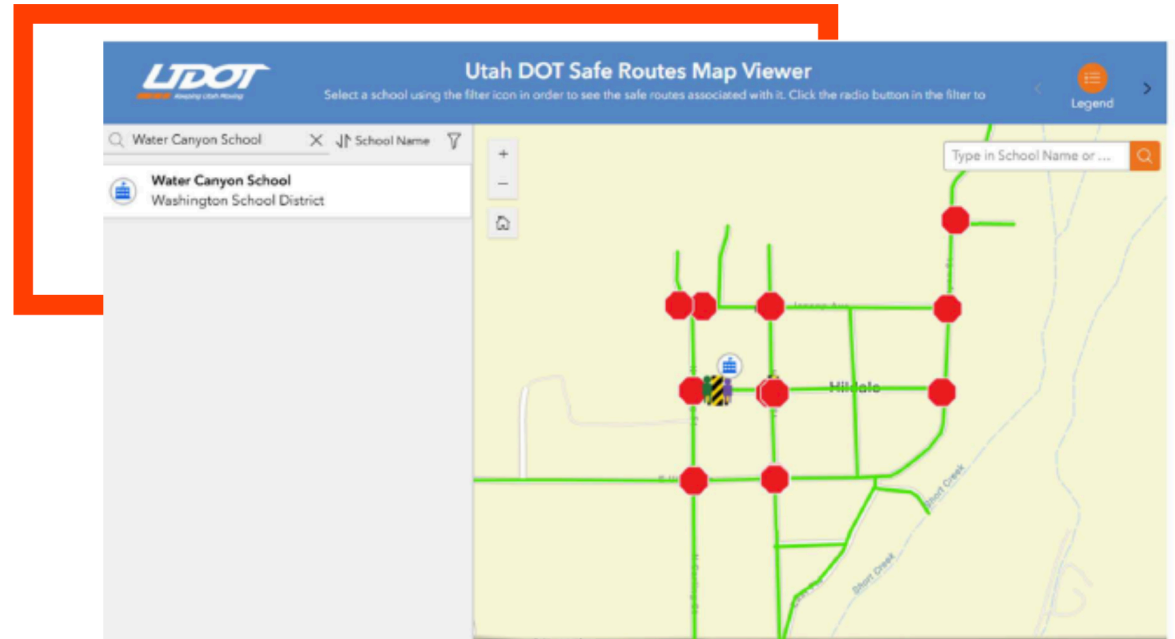


Why This Project Is Needed

- Connects kids to an Elementary School and High School on a high-traffic pedestrian corridor.
- Connects schools to a highly used library.
- Supports families with limited vehicle access or rigid work schedules.
- Improves safe access to Hildale Library – the most visited rural library in Washington County.
- It would help kids not walk in the street.
- Supports participation in after-school and community programs.

Alignment with Safe Routes Utah Plan

- Newel Avenue is designated as a primary school walking route





Expected Outcomes & Evaluation

- 150+ students will have a safe, direct route to school & library
- Reduced pick-up/drop-off traffic and calmer school frontage