

Town of Highland Beach

Continuing Professional Engineering, Architectural, Landscape Architectural, Surveying and Mapping Consulting Services (CCNA)

RFQ No.: 24-001 | January 10, 2024

Colliers Engineering & Design, Inc.
7284 W Palmetto Park Rd, Ste 201-S
Boca Raton, FL 33433
877 627 3772

Proposal Number: 23015807P



Engineering
& Design



Table of Contents

Tab 1
Letter of Interest 1

Tab 2
Personnel Qualifications..... 3

Tab 3
Past Experience 23

Tab 4
Approach to Project Management..... 29

Tab 5
Resources, Availability, and Commitment . 35

Tab 6
References 39

Tab 7
Certified Minority Business Enterprise 43

Tab 8
Forms..... 45



Tab 1

Letter of Interest



January 10, 2024

Town of Highland Beach Clerk's Office
c/o Skender Coma, Management Analyst
3614 South Ocean Blvd.
Highland Beach, FL 33487

Ref: RFQ No.: 24-001: Continuing Professional Engineering, Architectural, Landscape Architectural,
Surveying and Mapping Consulting Services (CCNA)

Dear Selection Committee,

Colliers Engineering & Design, Inc. (CED) appreciates the opportunity to submit our response to provide Continuing Professional Engineering, Architectural, Landscape Architectural, Surveying and Mapping Consulting Services (CCNA) to the Town of Highland Beach (Town). CED has carefully selected a team of professionals that align with your vision of Highland Beach as a residential community striving to provide the highest quality of living standards for present and future residents. We believe the information contained within this proposal will demonstrate our ability to support the Town while maintaining these commitments.

The firm's commitment to excellence, innovative thinking, and meticulous attention to detail are shared across all affiliated entities, creating a consistent standard of quality and client satisfaction. Our municipal/civil engineers, grant specialists, architects, surveyors, consultants, and planners provide viable and creative solutions to local municipal agencies to help meet diverse planning, infrastructure, and capital improvement goals while protecting functionality, natural resources, aesthetics, and quality of life.

Our services encompass all aspects of municipal endeavors including civil engineering, architecture, landscape architecture, electrical engineering, right-of-way and traffic engineering, construction engineering, environmental permitting, preparation of plans and specifications, geotechnical engineering, construction inspection engineering and inspection, engineering plan review, and geographic information systems (GIS).

For this contract, CED is committed to a cohesive and collaborative turnkey approach for project delivery, while maintaining the schedule and budget. Our structure provides the Town with easy access to a qualified engineering firm for various project types, including emergency response. We have an in-house team that is prepared and ready to go at any time to assist the Town. CED has the resources and the ability to carry out the scope of work under this contract. We've also strategically teamed with local subconsultants to enhance our responsiveness and flexibility providing services to the Town.

Mr. Michael O'Krepky, PE is our proposed Contract/Project Manager and primary point of contact for the Town. His experience includes program and project management, peer engineering review, serving as board engineer, civil design, stormwater design and management, permitting, and public engagement as both a private and public professional. As an experienced senior project manager, who has managed countless projects for Florida cities, counties, as well as around the country, Michael excels at project delivery activities from project inception through completion within study, design, bidding, and construction project phases. He will remain involved in the day-to-day operations, as needed, and is directly responsible to the Town for our performance on all project tasks.

Mr. Luis Costa, PE is an authorized signatory with full authority to make representations and to negotiate for the firm. He will also serve as the Principal-In-Charge

Thank you for your consideration and we look forward to working with you as a trusted partner. Should you have any questions, please feel free to contact Michael O'Krepky at michael.okrepky@collierseng.com, 973.222.5219 or myself at luis.costa@collierseng.com, 561.245.5845. As Principal Associate, I personally commit CED's priority effort to meet all the Town's requirements efficiently and effectively on schedule and within budget.

Sincerely,
Colliers Engineering & Design, Inc.



Luis Costa, PE
Principal Associate



Tab 2

Personnel Qualifications

Firm Qualifications

CED is pleased to submit our response for the opportunity to work with the Town. CED is a multi-disciplinary professional services firm with expertise in a wide range of engineering and surveying services. In Florida, we have seven offices with over 160 employees. Our Boca Raton office will oversee and manage this contract from our local office at 7284 W Palmetto Park Rd, Ste. 201-S, Boca Raton, FL 33433. Our additional offices are located in Miami, Ft. Lauderdale, Tampa, Jacksonville, Ft. Myers, and Orlando, to provide as-needed support.

The qualified CED team is experienced at providing all requested services noted on the right. We are unique to the fact of being able to provide almost all of the requested services in-house. The CED team is composed of licensed professional architects, engineers, surveyors, and geologists with extensive experience on a variety of projects.

CED professionals provide a full range of services to assist municipalities, authorities, and state agencies.

- Licensed Civil/Transportation Engineers
- LEED® Accredited Staff
- Professional Land Surveyors
- Professional Traffic Operations Engineers (PTOE)
- Licensed Professional Land Planners
- Environmental Scientists & Engineers
- Licensed Professional Geologists
- Licensed Professional Architects
- Licensed Professional Landscape Architects
- Geographical Information System Professionals (GISP)
- Grant Writers
- Archaeologists
- Certified CEI & CBI Inspectors
- NICET Level III and IV Staff

Professional Qualifications

CED's professional engineers, consultants, and planners provide viable solutions to local public clients and governmental agencies to help meet diverse planning, infrastructure, and capital improvement goals while maintaining function, natural resources, aesthetics, and quality of life. Our services encompass all aspects of public endeavors including local and regional utilities, water resources, parks and recreational spaces, public facilities, roadways, and streetscape design.

Our professional engineers take a responsive approach in helping public clients realize their long- and short- term objectives. Our expertise spans all aspects of municipal engineering, consulting, and public works management from the supervision of capital improvement projects to performing zoning and land use board reviews. For example, beginning with navigating grant and funding options, and following through with planning, design,

The CED team has carefully reviewed the entire request for qualifications and is fully prepared to execute all the tasks outlined in the document, including but not limited to, the 12 anticipated tasks delineated in the Scope of Work Section.

CED's Team has proven experience in these required services:

- Civil Engineering
- Engineering Peer Plan Review
- Water / Wastewater / Stormwater
- Architecture
- Mechanical / Electrical / Plumbing (MEP)
- Landscape Architecture
- Planning
- Geotechnical
- Transportation & Right-of-way
- Traffic Engineering
- Electrical Engineering
- Construction Engineering Inspection (CEI)
- Construction Management
- Geographic Information Systems (GIS)
- Grant Assistance & Management
- Structural Engineering
- SUE Services
- Utility Coordination & Design
- Environmental Permitting and Engineering
- Other Related Services



Given our location and availability, we will meet or exceed the Town's expectations for responsiveness. With the wide selection of service lines that our company offers for the subject contract, we are able to reduce the amount of oversight and contracting efforts by leveraging multiple service lines on a single contract. In addition, Mr. O'Krepky, as a dedicated and proven contract/project manager, will coordinate the multiple service lines on projects to simplify the organizational structure when executing projects. This will save the Town valuable resources and effort.

permitting, and construction observation and administration, we have the appropriate skills and services to bring your projects to a successful close-out. Having experience with both public and private applications has given our professionals a unique insight into both sides of the review process. The advantage afforded by our comprehensive suite of in-house support disciplines streamlines communications, enabling us to deliver the best options and value for your community.

Our Florida experience with similar local municipalities includes Palm Beach County, Pompano Beach, Miami Parks & Recreation Department, Bradenton Beach, Holmes Beach, and Manatee County Schools. We also hold multiple FDOT professional services contracts. CED can provide the Town with a true turn-key team with each of our service lines working together to ensure you receive a high-quality client experience.

Primary Key Team Personnel

Sharing our extensive in-house discipline expertise under one roof is an advantage to our clients because it is applied throughout our strategic company network.

For this contract, we have structured the team to be led primarily by our Project Manager who will be supported by the core management team and our qualified senior discipline leads. This allows for an internal and external streamlined process. CED values our clients and strives to build a positive and trust-based working relationship. We believe the core management team structure best serves this goal.

The Town of Highland Beach will benefit from the team that was carefully selected for this contract. CED has extensive experience providing similar services to communities around the country. CED has teamed with C Solutions, Inc., who has a depth of local experience related to Water, Wastewater and Drainage projects, and with 2GHO Inc., who has a depth of local experience in Palm Beach County providing Planning and Landscape services.

In alignment with CED's approach, Mike will manage the project's overall scope and budget while serving as the single point of contact to the Town staff. He will rely on the key staff leads to manage their individual portions of the scope. Mike and the key project members are available and committed to provide an on-site presence as needed by the specific project requirements.



Michael O'Krepky, PE, CME is the proposed Project Manager and primary point of contact for the Town. He has engineering industry experience spanning over two decades, including civil design, project engineering, and project management for public and private sector clients. He has worked on a variety of project types, including site development, drainage and roadway infrastructure, new facilities, mining, reclamation plans, and environmental remediation. Mr. O'Krepky has coordinated utility installation and conflict, managing private developers involving DOT facilities and municipally and privately owned sewer, water, stormwater, electric, telecommunications and gas utilities.



Luis Costa, PE will serve as the Principal-In-Charge. He has extensive experience in the management and administration of engineering operations as well as a strong background in transportation engineering. His experience includes interstate projects, signature bridge replacement projects, corridor management, interchange projects, railroad projects and indefinite deliverable miscellaneous contracts. He has been the Project Manager for conventional Design-Bid-Build (DBB) projects and the Owner Representative for Design-Build (DB) projects.



Daniel Checchia will serve as a QA/QC Manager. He has over two decades of South Florida experience in transportation engineering, surveying, and construction related fields, with expertise in SUE and utility coordination. His duties include the supervision of the day-to-day operations of Survey, SUE, and Utility Coordination assignments to ensure QA/QC from field to office is maintained on all projects. Mr. Checchia maintains a strong rapport with local utilities and municipalities and assists clients with utility research, identification, data management and coordination.



John Arrieta, PE, PTOE will serve as a QA/QC Manager. He is a Lead Senior Traffic Engineer with over 26 years of experience, in transportation/traffic engineering, planning and traffic signal design. His technical expertise includes traffic operational and safety analyses and development of feasible improvements; signal warrant analysis, signal timing and operational analysis, and signal design; data collection: traffic counts, travel time and delay studies; traffic forecasting; traffic calming; preparation and review of Interchange Access Requests (IOAR, IMR, SIMR, and IJR); preparation and review of site traffic impact studies; and policy and (long-range planning).



Pavel Drachev, PE, is a Geotechnical Engineer with more than 15 years of experience. This included construction observation and materials testing experience. His construction experience includes field observation and testing services related to earthwork; reinforcing steel observation; cast-in-place concrete sampling and testing for foundations, slabs-on-grade, and slabs-on-metal deck; post-installed anchor installation; spread footing foundation construction; and auger-cast-in-place piles. His geotechnical engineering experience includes coordinating and executing geotechnical exploration programs, including field observation and logging of the exploratory work (test borings and test pits); assignment and execution of laboratory test programs.



Ian Dixon, LEED AP, WELL-AP, FITWELL, ENV-SP has over 10 years of experience in the architecture, design, and construction industry. Mr. Dixon brings a passion for sustainability and resilience to every project, and has led the design of various project types. He takes pride in the quality relationships built with those involved in projects he has worked on, and is eager for each new challenge.



Micheline Deigan, AIA, NCARB has experience in Architecture, Interior Design, and Project Management. Ms. Diegan's experience involves various aspects of a project including schematic design, design development, construction documents, and project and client management. Project organization skills include scheduling, project budget tracking, the ability to lead and direct the project team, and coordination with consulting engineers and clients. She is highly organized, self-motivated, and works extremely well under pressure.



Mark Drummond, PE, BCEE (C Solutions) has 27 years of experience in the planning, design, permitting, and construction management of pump stations, wastewater collection systems, water distribution systems, water treatment systems, and wastewater treatment systems. He has also assisted in the development of various water and wastewater masterplans including Broward County's Retail Potable Water and Wastewater Masterplan, Palm Beach County's Wastewater Masterplan, the Glades Wastewater Masterplan and the City of Rivera Beach's Water and Wastewater Masterplan.



Felipe Martinez, PE (C Solutions) is a civil / environmental engineer experienced in , water distribution systems, wastewater collection and transmission systems, water reuse systems, hydraulic modeling, wastewater and water treatment process design permitting and construction management. Mr. Martinez has over 24 years of experience in the program management, planning,

design, and construction of water and wastewater facilities in the United States and overseas.



Jennifer Prettel, PE (C Solutions) is a civil engineer experienced in the design of water distribution systems, wastewater collection and transmission systems, water reuse systems, hydraulic modeling, ArcGIS, asset management, water supply projects, sanitary sewer evaluation surveys, construction contract procurement and management, bidding assistance and permitting.



George Gentile, PLA, FASLA (2GHO) has over 40 years of experience in landscape architecture, land planning and environmental consulting including experience as a planning official for the City of Vero Beach, Florida and Palm Beach County. His planning experience includes development of Palm Beach County's first comprehensive plan, including the development of plans for several municipalities, development of zoning codes, land development regulations and regional planning activities for both public and private clients. He is a court certified expert in his field and has testified in courts in Martin and Palm Beach County as well as testifying in several administrative review processes throughout the State of Florida. Since 1988 he has been responsible for the development and management of a full-service landscape architectural, planning and environmental consulting office in South Florida.



Emily O'Mahoney, PLA, FASLA (2GHO) has over 40 years of experience in landscape architecture and site planning with emphasis on conceptual and detailed design for all scales. Her professional experience has been with private landscape architecture firms in the South Florida Area. Sustainability is not only reflected in Emily's design and professional work but carries over at home with a photovoltaic array reducing the family's carbon footprint. Emily views landscape architecture as design of outside space, creating a strong sense of place and working with nature to create beautiful places and spaces. Every day and with every project, she approaches design and problem solving from an artistic angle in a sustainable manner.

Subconsultants

While CED provides a qualified and dedicated pool of professionals for this pursuit, we have also proposed additional teaming partners to provide full coverage, redundancy and specific local expertise. We have included additional firms to provide support as needed in order to provide the Town a complete team package.



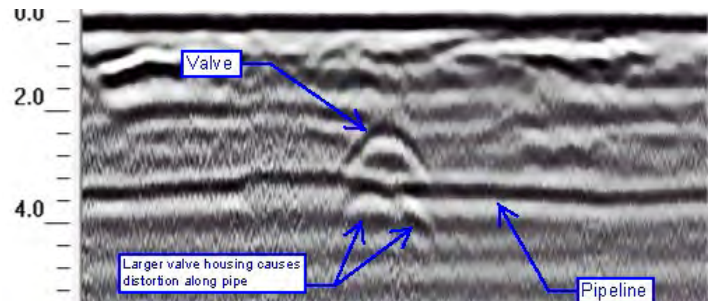
Established in 2005, **CSOLUTIONS Solutions Inc.** is a minority owned and certified local Small Business Enterprise

specializing in water and wastewater engineering with a local office in Palm Beach County. Our vision is to provide senior professionals with the ability to focus on a client's need. We believe that providing the right solution relies on the quality of the client relationship and are committed to a shared understanding of the challenge, the need and the desired result. Our expertise includes the planning, condition assessment, design, permitting, and construction management of water, wastewater and reclaimed water infrastructure projects for public municipalities in Florida.



2GHO brings over 35 years of experience addressing Landscape Architecture, Land Planning,

Environmental Design and Development Approvals, and Permitting. 2GHO has been recognized as one of South Florida's leading land planning, landscape architecture, and environmental consulting firms. Their uniquely talented team of professionals is committed to the client's goal, balancing budget, and time, while also providing nature-based sustainable solutions based on cutting edge design research and trends.



CED is not your typical engineering, design, and consulting firm because of our in-house multiple service lines that complement our Engineering, Surveying, and Geotechnical Services.

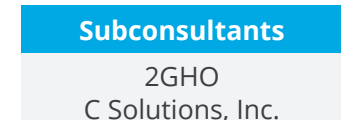
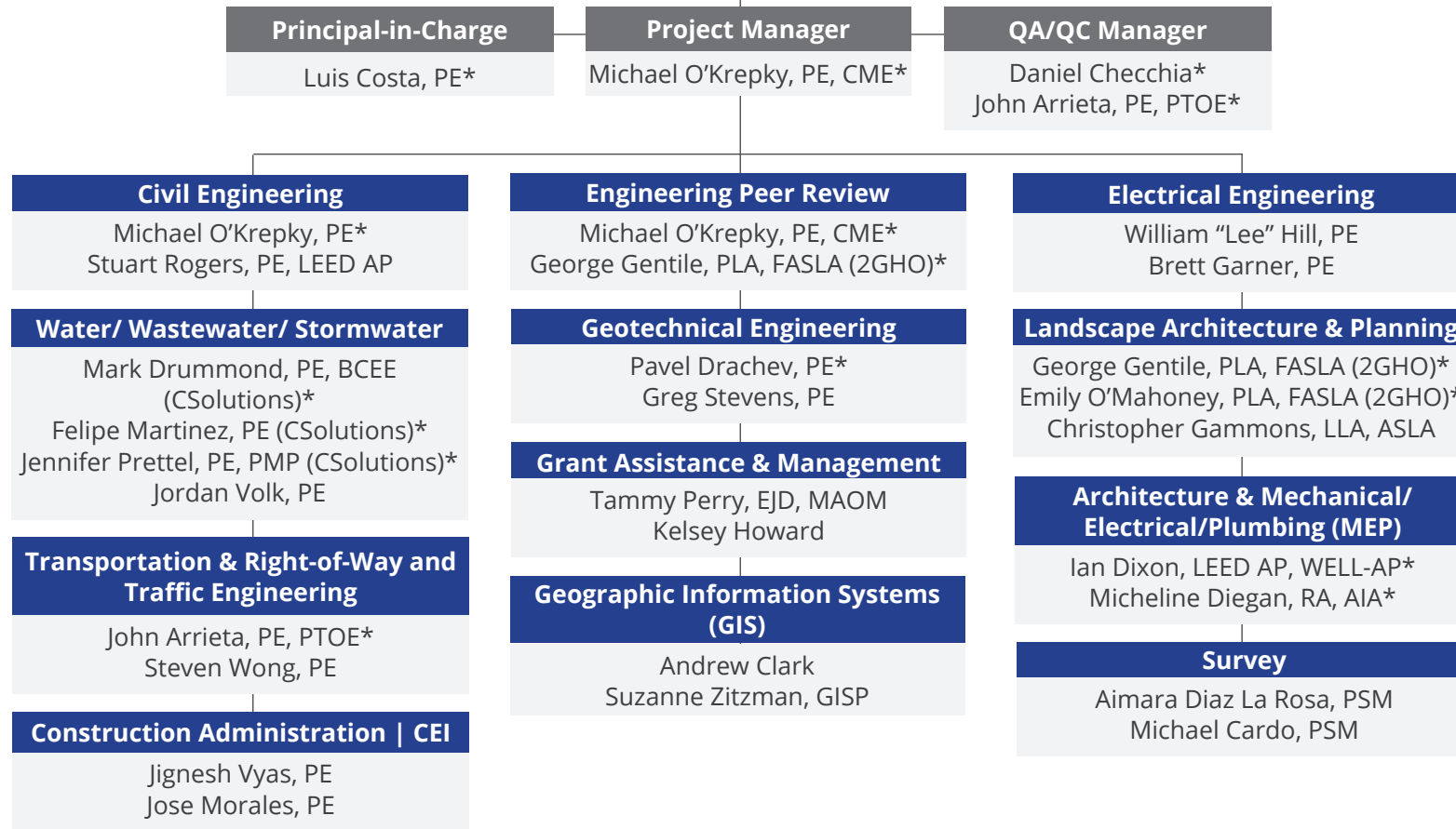
This benefit saves our clients time and money because they have our full suite of services supporting them in multiple ways if needed. This particularly applies to emergency response, site/civil design, CMT, geotechnical or environmental engineering.

For example: Traditionally, SUE firms within Florida use their GPR results solely for QL-B utility designation, as is requested in this RFP.

GPR results can also provide valuable information that geophysicists (typically found in only geotechnical engineering firms) can also analyze for subsurface anomalies that could indicate geotechnical issues.

CED is fairly unique as it not only provides full level SUE capabilities, but also in-house geophysical analyses that can analyze the collected data for indications of buried debris, indications of karst activity, and other problematic soil conditions. *This dual use of the collected information significantly increases the value of the deliverable to the client.* Particularly, we have found this combination to be very effective when analyzing utility issues, such as utility failures or distresses. An example of this success is provided in our SRQ Airport project in Sarasota County.

Organizational Chart



* All Key staff resumes included



Michael O'Krepky, PE, CME

Engineering Lead | Project Management

Education

BS, Civil Engineering, Old Dominion University, Va., 1995

Professional Registrations

Professional Engineer (PE), FL & NJ

Certified Municipal Engineer (CME) New Jersey

Professional Certifications

Mine Safety and Health Administration (MSHA) Part 46 Safety Training Certified

Mr. O'Krepky has engineering industry experience spanning over two decades, including civil design, project engineering, and project management for public and private sector clients. He has worked on a variety of project types, including site development, drainage and roadway infrastructure, new facilities, mining, reclamation plans, and environmental remediation.

As a Municipal Engineering Representative for many municipalities, Mr. O'Krepky has coordinated utility installation and conflict, managing private developers involving DOT facilities and municipally and privately owned sewer, water, stormwater, electric, telecommunications and gas utilities.

Key Projects

Master Drainage Study Update, *City of Bradenton Beach, FL*

CED provided professional services to complete the Master Drainage Study Update as required by the Florida Department of Environmental Protection, (FDEP). As required by the FDEP, the Master Drainage Study for the City is to be updated periodically. To complete this update report, CED conducted an inspection of the entire Municipal Stormwater collection, treatment, and conveyance systems.

Grassy Point Habitat Restoration Boardwalk, *Holmes Beach, FL*

CED completed permit applications and coordination with the Southwest Florida Water Management District (SWFWMD) for authorization of the proposed project under Florida Department of Environmental Protection (FDEP) General Permit 62-330.427 General Permit for Docks, Piers, and Associated Structures. Simultaneously, CED completed engineering design and construction drawings for two new sections of timber framed boardwalk structures. The first section was approximately 85 linear feet of boardwalk to connect to the existing shell trail and the second section was connected to the end of the existing boardwalk.

Englewood Cliffs Planning Board Engineer, *Borough of Englewood Cliffs, NJ*

To accommodate the public regarding Covid-19, the Borough of Englewood Cliffs Planning Board held online meetings starting in 2020. Michael served as Planning Board Engineer completing all reviews and attending remote meetings as required by Englewood Cliffs.

As Englewood Cliffs' appointed Board Engineer, Michael was responsible for reviewing various residential, commercial, and redevelopment projects, as well as assisting in the process of reviewing and updating the community's master plan, a comprehensive, long-range plan intended to guide the growth and development of the Borough. This document contains elements that provide for future development, housing, recreation, open space, transportation, community facilities and land use.

Additional duties involved subdivision and site plan review; reviewing the official map and associated zoning ordinances; conducting studies of areas suitable for redevelopment; reviewing the capital improvements program; and review of other state or federal programs or plans.



Luis Costa, PE

Transportation Engineering Lead | Principal-In-Charge

Mr. Costa has over 35 years of extensive experience in the management and administration of engineering operations as well as a strong background in transportation engineering. His experience includes interstate projects, signature bridge replacement projects, corridor management, interchange projects, railroad projects and indefinite deliverable miscellaneous contracts. He has been the Project Manager for conventional Design-Bid-Build (DBB) projects and the Owner Representative for Design-Build (DB) projects. He has also served as Design Manager while working for prominent South Florida contractors in DB projects.

Education

BS, Civil Engineering, Florida International University

BS, Ocean Engineering, Florida Atlantic University

Professional Registrations

Professional Engineer (PE), FL

Certified General Contractor
No. CGC054399

Key Projects

SR 45/US 41 from Palermo Drive to US-41 Bypass, FDOT D1, Sarasota County, FL

Chief Roadway Engineer for this 1.2-mile urban reconstruction through downtown Venice, Florida. Project included a bascule bridge replacement over the Hatchett Creek, MSE walls, complex traffic control, extensive utility relocation, as well as coordination with the City of Venice for beautification efforts.

Ocean Ave. Bridge in Lantana PD&E Study and Final Design, Palm Beach County, FL

Project Manager and Roadway Engineer of Record for the replacement of a low-level bascule bridge over the Atlantic Intracoastal Waterway. Led the project development from its inception as a Conceptual Study through design and post design support, as well as Construction Engineering and Inspection services. Led the public and agency involvement, permitting and utility coordination.

SR-9/I-95 Broward Interchanges Master Plan, FDOT D4, Broward County, FL

Project Manager for the development of a masterplan for the Year 2040 Traffic Horizon for 18 interchanges in Broward County. Includes the development of Conceptual Design Alternatives addressing major utility, environmental and right of way impacts. Coordination with 10 municipalities along the I-95 corridor, the Broward MPO and numerous stakeholders was a critical aspect of the project.

NW 21st Avenue from Oakland Park Boulevard to Commercial Boulevard, FDOT D4, Broward County, FL

Project Manager. The purpose of the project is to widen NW 21st Avenue from Oakland Park Blvd to Commercial Blvd to accommodate a bicycle lane in each direction of travel. The scope also includes replacement of the bridge over the SFWMD C-13 Canal, pavement milling and resurfacing, restriping, and sidewalk improvements.



Daniel Checchia

Regional Manager | Subsurface Utility Engineering | QA/QC Manager

Mr. Checchia is Regional Manager for Subsurface Utility Engineering Services (SUE) for Colliers Engineering & Design. He has over two decades of South Florida experience in transportation engineering, surveying, and construction related fields, with expertise in SUE and utility coordination. His duties include the supervision of the day-to-day operations of Survey, SUE, and Utility Coordination assignments to ensure QA/QC from field to office is maintained on all projects.

Education

AS, Applied Science, Suffolk County Community College, 2001

Affiliations & Memberships

SUE Association, President Elect

ASCE/Utility Engineering & Surveying Institute (UESI), Member

Florida Utility Coordination Committee (FUCC) member

UESI Chair, Broward County Chapter

D7 Utility Liaison Committee Secretary

Mr. Checchia maintains a strong rapport with local utilities and municipalities and assists clients with utility research, identification, data management and coordination. His high level of expertise and understanding of the Quality Levels defined with the ASCE Guideline 38, enables him to manage a project from pre-design through construction, identifying utility impacts, and mitigating conflicts with cost effective and timely resolutions.

Mr. Checchia has substantial experience working for the Florida Department of Transportation (FDOT). As a technical delegate for FDOT District IV Survey & Mapping Advisory Committee, he helped develop new field procedures and deliverables for statewide projects. He has a comprehensive knowledge of the FDOT Utility Coordination process, and his philosophy is to maintain an open and productive dialogue throughout the initial SUE investigation; utility coordination, and post-design follow up.

Key Projects

Tree Top Park, D4 Biscayne Engineering, Davie, FL

CED was tasked with performing a utility designation investigation along Nob Hill road for 6,500' along SW 45th Street, east along SW 45th Street from the west side of Nob Hill road, and east along Whispering Pines Road. CED utilized multiple geophysical prospecting techniques as well as ground penetrating radar to identify the existence of underground utilities. CED mapped all the utility designation. This effort is for future design enhancements to the entrance of the park and assist in identifying the presence of existing utilities. Wet land delineation will be performed, and the location of utilities will be critical in establishing rights of entry for any future utility work or maintenance.

Districtwide Subsurface Utility Engineering (SUE) and Survey Utility Excavation, FDOT District 4, Palm Beach County, FL

Provided ASCE Standard Quality Level A-D Subsurface Utility Engineering services to designate, locate by excavation, survey and map existing surface and subsurface utilities to support the design of construction plans on a districtwide basis on projects selected by the district office. Services include providing the exact horizontal and vertical locations of existing underground utilities by way of electromagnetic, sonic, and other geophysical location techniques including air/vacuum or other non-destructive excavation procedures.

SR 5 from South of Yamato Road to South of C-15 Canal, FDOT D4, Palm Beach County, FL

Provided Utility Coordination services to facilitate discussion between utility owners / authorities and FDOT to successfully resolve potential utility conflicts with the proposed design plans. Mr. Checchia also provided designating (ASCE Quality Level B) subsurface utility engineering services to map the horizontal position of underground utilities within the project limits of this three-r project.



John Arrieta, PE, PTOE

Senior Traffic Engineer | Traffic Lead | QA/QC Manager

Education

ME, Transportation Engineering, University of Maryland, 2000

BS, Civil Engineering, University of Maryland, 1996

Professional Registrations

Professional Engineer (PE), FL

Professional Traffic Operations Engineer (PTOE), FL

Professional Certifications

FDOT Advanced Temporary Traffic Control Certification #36930

IMSAs Traffic Signal Technician – Level I Certification

Mr. Arrieta is a Lead Senior Traffic Engineer with over 26 years of experience, in transportation/traffic engineering, planning and traffic signal design. His technical expertise includes traffic operational and safety analyses and development of feasible improvements; signal warrant analysis, signal timing and operational analysis, and signal design; data collection: traffic counts, travel time and delay studies; traffic forecasting; traffic calming; preparation and review of Interchange Access Requests (IOAR, IMR, SIMR, and IJR); preparation and review of site traffic impact studies; and policy and (long-range planning. His work experience includes the use of various transportation software and models, such as Highway Capacity Software, Synchro, SimTraffic, VISSIM, TSIS-CORSIM, ArcGIS, FSUTMS/Cube, and various excel workbooks to calculate volume statistics and projections, operational and safety impacts, and cost/benefit

Key Projects

Districtwide Traffic Operations Safety Studies, FDOT D6, Miami-Dade County, FL

Assistant Project Manager & Task Coordinator / Project Traffic Engineer - tasks under this project have included the development of traffic engineering reports/studies such as intersection qualitative assessments, signal warrant analyses, left-turn phase warrant analyses, access management analyses, composite studies (i.e. counts, crash analysis, travel time and delay studies, queue analyses, vehicle gap measurement, conflict analyses, Level of Service analyses, pedestrian group size, spot speed studies, other traffic engineering related studies and public involvement). In charge of coordinating data collection efforts, processing and analyzing field data.

Districtwide Traffic Operations Safety Studies FDOT D4, Districtwide, FL

Deputy Project Manager / Project Traffic Engineer - tasks under this project have included the development of traffic engineering reports/studies such as intersection qualitative assessments, signal warrant analyses, left-turn phase warrant analyses, access management analyses, composite studies (i.e. counts, crash analysis, travel time and delay studies, queue analyses, vehicle gap measurement, conflict analyses, Level of Service analyses, pedestrian group size, spot speed studies, other traffic engineering related studies and public involvement). In charge of coordinating data collection efforts, processing and analyzing field data. This contract included over 140 Task Work Orders.

Continuing Engineering Services, City of Parkland, Broward County, FL

Project Transportation Engineer for this continuing professional engineering services contract. Assignments include preliminary operational/level of service analysis and traffic signal warrant evaluation to develop control configuration concepts for University Drive and Old Club Road intersection. Different alternatives were presented at the Strategic Planning Session, and the proposed concept was approved for implementation analysis. Other work includes traffic impact study review and participation on the Development review Committee for the Parkland Royale Master Plan development application, element analysis on multiple Category 2 structures; Scour surveys, slope protection and expansion joint repairs to multiple bridges; replacement of miscellaneous structures, such as slip post signs throughout the District; deck condition evaluations, and the design of cathodic protection systems for the substructures of SR 520, SR 404, and SR 500 over ICWW.



Pavel Drachev, PE

Project Engineer | Geotechnical Services

Education

MS Civil Engineering Coursework,
Villanova University, Ongoing

BS Civil Engineering Coursework,
Drexel University, 2018

Engineering Science Coursework,
Community College of
Philadelphia, 2016

United Union of Roofers,
Waterproofers, and Allied Workers
Vocational School, 2012

MS Mechanical Engineering, South
Ural State University, 2008

Professional Registrations and Certifications

Professional Engineer (PE), Florida

Local 30 United Union of Roofers,
Waterproofers, and Allied
Workers, June 2012

OSHA 40 Hr HAZWOPER Training

OSHA 30 Hr Construction Safety
Course

OSHA 10 Hr Construction Safety
Course

ICC Reinforced Concrete Special
Inspector Associate

ACI Adhesive Anchor Installation
Inspector

ACI Concrete Field-Testing
Technician, Grade 1

Troxler Nuclear Density Gauge
Operation Safety

Mr. Drachev is a Project Engineer with over 15 years of geotechnical engineering, construction observation, and materials testing experience. His construction experience includes field observation and testing services related to earthwork (e.g. subgrade stability; fill placement and compaction testing); cast-in-place concrete sampling and testing for foundations, slabs-on-grade, and slabs-on-metal deck; post-installed anchor installation; spread footing construction; and auger-cast-in-place piles. His geotechnical engineering experience includes coordinating and executing geotechnical exploration programs, including field observation and logging of the exploratory work (test borings and test pits); assignment and execution of laboratory test programs; assistance with geotechnical evaluations (e.g. bearing capacity and settlement determinations); and technical report preparation.

Key Projects

RSW International Airport Expansion, Fort Myers, Lee County, FL

Project facilitator and project engineer managing all field staff for the Quality Assurance testing (construction materials testing) for the terminal expansion of RSW. Also charged with preparing all deliverables including daily field reports, laboratory testing, and notifications to clients. Services provided include:

- Field testing of sitework and other improvements to verify general compliance with plans and specifications
- Auger Cast Pile Observation
- Static Load Test Observation
- CMT laboratory testing on soil and concrete samples

SRQ International Airport, Sarasota-Bradenton, Lee County, FL

Project Facilitator and project engineer managing all field staff for a number of tasks including geotechnical exploration/evaluation QA testing and Construction Materials Testing - CMT). Served on multiple projects for varying purposes and roles as a team member with EG Solutions. Projects include:

- Pavement and geotechnical exploration with sitework recommendations for commercial apron expansion of the airport.
- CMT laboratory testing on soil samples to be used for commercial apron expansion.
- QA (Quality Assurance) Construction Materials Testing on the commercial apron expansion including density tests, concrete testing, cement-treated base backfill, and field observations

SFRTA Railway Maintenance Station, Palm Beach County, FL

Project Engineer responsible for managing field operations, managing field personnel, and organizing explorations and safety programs with the transit authority. Improvements include sound walls, rail tracks, light structures, buildings, and ponds. Mr. Drachev provided a wide range of geotechnical recommendations for the proposed improvements, as well as remediation recommendations for the issues encountered, based on the results of the exploration.



Ian Dixon, LEED AP, WELL-AP, FITWELL, AMB, ENV-SP Senior Architect

With over 10 years of experience in the architecture, design, and construction industry, Mr. Dixon brings a passion for sustainability and resilience to every project, and has led the design of many different project types with various delivery systems and a wide range of scales. Mr. Dixon is devoted to client-centric project delivery. Mr. Dixon works tirelessly to establish and maintain open lines of communication with the entire team, from Owners and Stakeholders to Design and Construction teams. He takes pride in the quality relationships built with those involved in projects he has worked on, and is eager for each new challenge.

Education

BArch, Environmental Science & Policy Minor, University of Miami

Professional Registrations

Registered Architect, Florida

Professional Certifications

NCARB Reg No. 89261

LEED Accredited Professional
No. 10828198

WELL Accredited Professional
No. 40490

FITWEL Ambassador

ENVISION Sustainability
Professional No. 29600

Key Projects

Pompano Beach Senior Activity Center, *City of Pompano Beach, FL*
Architect of Record/ Job Captain - Provided design and construction drawings for a new Recreation Facility for the Senior community of Pompano Beach, and guiding the project to a minimum LEED Silver Certification. Scope of services included providing permit ready documents for the facility, coordination of sustainable design features among all trades, and construction administration services until the completion of the project. Construction Completed December of 2022. Budget: \$4,000,000

Doral Cultural Arts Center, *City of Doral, FL*
Architect of Record - Supervised the design team with the development of construction documents for a one-story art exhibition space and event hall. Assisted with design, construction documents, development of sustainable design features, code compliance, and value engineering. The City of Doral requires the building attain a minimum silver rating by the Florida Green Building Coalition. Completed in December of 2022. Budget: \$8,000,000

Historic Charles Deering Estate Renovation and Courtyard Improvements | Miami-Dade County Department of Parks, Recreation, and Open-Spaces (PRO-S), *Miami-Dade County, FL*
Architect of Record/ Job Captain - Provided design and construction drawings for the renovation of a water damaged substructure and courtyard improvements at Historic Charles Deering Estates. Completed in October of 2021. Budget: \$6,000,000

City of Miami Springs | Miami Springs Senior Center, *Miami, FL*
Provided design and construction drawings for a new Recreation Facility for the Senior community of Miami Springs. B&A scope of services included providing permit ready documents for the new facility, and construction administration services until completion. Completed in March of 2021. Budget: \$12,000,000

Royal Caribbean Cruises Terminal A at Port Miami | Port, *Miami, FL*
In charge of the LEED Silver Certification of a 200,000 Square Foot New Construction Cruise Terminal to support 8,000 passengers at Port Miami. Construction Completed in June of 2019, LEED Silver Certification obtained in March of 2020. Budget: \$220,000,000



Micheline Deigan, AIA, NCARB

Senior Architect

Education

BArch, University of Louisiana

Professional Registrations

Registered Architect, Florida

Professional Certifications

American Institute of Architects

National Council of Architectural Registration Board (NCARB) Record No. 95374 Certification No. 63652

Women in Architecture

ACE Mentor Program

Awards

AIA President's Award 2004

AIA President's Award 2008

AIA President's Award 2010

AIA Jacksonville Nomination to National AIA for Young Architect of the Year Award 2008

Ms. Deigan has experience in Architecture, Interior Design & Project Management as well as experience in Business Development & Marketing. Ms. Deigan's experience involves various aspects of a project including schematic design, design development, construction documents, and project and client management. Project organization skills include scheduling, project budget tracking, the ability to lead and direct the project team, and coordination with consulting engineers and clients. She is highly organized, self-motivated, and works extremely well under pressure. She has solid experience in marketing & business development, is client-oriented and has proven ability to contribute to highly rated client satisfaction.

Ms. Deigan served in the IDP Program for the local AIA Jacksonville Chapter from 2000-2016 as the IDP State Liaison, organizing seminars and workshops with the objective to mentor and encourage intern architects through their process of preparation to become registered. She is now serving the local AIA Chapter Board in the role of Chapter Director which became effective January 2019.

Key Projects

Florida Department of Environmental Protection | Alfred Maclay Gardens Workshop and Pole Barn Development, Tallahassee, FL

Senior Project manager

- A&E Services included Building, Sand survey, Civil and Geotech services.
- Maintenance Building: gross area 2,368 sq. ft. 3-bay with mezzanine level, construction type 3B – CMU walls with standing seam metal roof.
- Pole Barn: Gross area 1.875 sq. ft., construction type 2B – pre-engineered steel frame with RS-1 roof.

Sulzbacher Center for Women & Children, Jacksonville, FL

Senior Project Manager - Project consists of a three-story building. The first floor includes support facilities comprising a medical, dental and optical services center, daycare, an educational center for women, after-school children's program, counseling services, residents dining hall and commercial kitchen. The second and third floor consist of 70 residential units and 54 transitional housing, including units for respite and veterans requiring medical attention. Project Budget Estimate: \$24M. 2016-2017

Duval County Public Schools | Architectural Facilities Assessments, Duval County, FL

Assessment Conductor - Assess site, building envelope, interior building's architectural, structural and life safety of DCPS School Facilities and provide reports, photos and recommendations for existing conditions, with the purpose of Duval County Public Schools to establish renovation budget for funding by Florida State. 2018

TD Bank | Architect on Record & Rollout/Prototype Programming, Florida (East Coast)

Project Architect - Led the effort of its design modifications, coordination with all disciplines and construction document preparation for Permit & Bid Issues.

Mark S. Drummond, P.E., BCEE*President***Education**

B.S. – Civil Engineering, Florida
International University, 1996
(Minor in International Relations)

Registration

Professional Engineer: Florida
(License No: 57428)

Professional Engineer: Jamaica
(Registration No: PE/01/0583)

Certified NASSCO PACP, MACP, LACP

Certified SAVE VMA

Professional History

C Solutions, Inc. (2005 to Date)

Camp Dresser & McKee Inc.
(2009 to 2019)

Mr. Drummond has 27 years of experience in the planning, design, permitting, and construction management of pump stations, wastewater collection systems, water distribution systems, water treatment systems, and wastewater treatment systems. He has also assisted in the development of various water and wastewater masterplans including Broward County's Retail Potable Water and Wastewater Masterplan, Palm Beach County's Wastewater Masterplan, the Glades Wastewater Masterplan and the City of Riviera Beach's Water and Wastewater Masterplan.

Design Engineer, NRWTP 190 MGD MEPS Conceptual Study, Broward County, Florida.

Provided hydraulic analysis for conceptual design configurations for a new 190 MGD Multiuse Effluent Pump Station (MEPS). The goal of this MEPS is to combine flows from the NRWTP Effluent Outfall Pump Station (PS), the Secondary Effluent PS and the Injection Well Pumping System into a single pump station with the ability to transfer flows to multiple locations.

Engineer of Record, New Submersible Wastewater Pump Station D2-D-3, Miami Dade Water and Sewer Department, Florida.

Engineer of Record for the design of a new duplex submersible pump station, associated structures, and piping to transmit wastewater from a new sanitary sewer collection system for unsewered areas along NW 7th Avenue corridor.

Design Engineer, Water Treatment Plant No. 3 and 9 Expansion Study, Palm Beach County, Florida. Mr. Drummond evaluated alternatives for expanding the nanofiltration facilities at WTP 3 and WTP 9 and provided hydraulic analysis for various expansions options for the High Service Pumps, Transfer Pumps and Membrane Feed Pumps for both facilities to evaluate various expansion alternatives.

Engineer of Record, 12 MGD Aguadulce Surface Water Treatment Plant, IDAAN, Aguadulce, Panama. This project included the design of a new 12mgd Surface WTP including surface water intake from the Santa Maria River, raw water transfer pump station, flocculation and coagulation basins, dual media self-backwashing filters, solids handling, and backwash recycle water basins, finished water storage and 24mgd high service pump station to distribute water to remote storage tanks to serve 50 cities/towns through 200km of transmission pipeline.

Design Engineer, Design of Sanitary Sewer Collection Systems, City of Fort Lauderdale, Florida. As part of the City of Fort Lauderdale's \$250 million wastewater CIP, Mr. Drummond was the design engineer for the design of sanitary sewer collection systems totaling \$32 million in construction cost. This included hydraulic gravity sewer modeling, value engineering, constructability reviews, construction inspections, the preparation and/or review of preliminary design reports, and the layout and sizing of gravity sewers and pump stations.

Engineer of Record. Rehabilitation and Replacement of Master Lift Station No. 50, City of Riviera Beach, FL. Engineer of Record for the design, permitting and construction management for the conversion of an existing 16 MGD wet-pit / dry-pit master pump station to an above ground inline booster station. The design recommended a small reconfiguration of the transmission system, finding that LS1A could pump directly to ECRWRF, and replaced LS50 with an above ground 5.8 MGD inline booster station with two smaller and two larger pumps horizontal centrifugal pumps with VFDs. This provided a large capital cost savings for the rehabilitation of LS50 while improving system reliability and greatly reducing operations and maintenance cost.

Design Engineer, 30 MGD WTP No. 8 Process Rehabilitation and Improvements, Palm Beach County, Florida. Mr. Drummond was the Engineer of Record for the design of improvements for various processes at the 30 MGD WTP No. 08. Mr. Drummond designed various improvements including Lime Softener Blowdown Pump Station, Sludge Pond Pump Station, THM removal system in GSTs, lime softening flume and chemical mixing, and various yard piping improvements.

Project Manager, Packed Tower Aerator Design Evaluation, City of Riviera Beach, Florida. Mr. Drummond provided the base design criteria required to renovate and provide media replacement of the four packed tower aerators for the 17.5mgd Water Treatment Plant.

Felipe Martinez, P.E.*Director of Engineering***Education**

M.S. – Civil/Environmental
Engineering, Louisiana State
University, 2001

B.S. – Civil Engineering, Universidad
del Valle (Cali, Colombia), 1996

Registration

Professional Engineer: Florida
(License No:68402)

Professional History

C Solutions, Inc. (2020 to Date)

Hazen and Sawyer
(2001 to 2020)

Empresas Municipales de Cali
(1996-1998)

Felipe Martinez is a civil / environmental engineer experienced in , water distribution systems, wastewater collection and transmission systems, water reuse systems, hydraulic modeling, wastewater and water treatment process design permitting and construction management. Mr. Martinez has over 24 years of experience in the program management, planning, design, and construction of water and wastewater facilities in the United States and overseas.

Project Manager, Sewer Implementation and Consent Order Program, Fort Lauderdale, Florida. As part of the \$144 million Sewer Design and Implementation Program for the City of Fort Lauderdale, Mr. Martinez worked as the Project Manager for the NE 25TH Ave. 24-Inch Force Main Replacement project which consists of the replacement of approximately 5,500 linear feet of the existing 24-inch Reinforced Concrete Pipe (RCP) along NE 25th Avenue. He also served as a Project Manager for NE 38TH ST. 42-Inch Force Main which will replace approximately 8,000 feet of 42-inch Ductile Iron Pipe (DIP) force main along NE 38th Street and the construction of 3,000 feet of new 24-inch force main along NE 19th Ave. Additionally, Mr. Martinez was the project manager for the GT Lohmeyer WWTP Effluent Pipe project which contains the replacement or rehabilitation of the 54-inch force main that extends from the G.T. Lohmeyer Wastewater Treatment Plant (WWTP) to the deep injection wells (DIWs). Mr. Martinez responsibilities included defining scope of service, deciding the project delivery method, ratifying the project schedule and cost, and reviewing preliminary design alternatives.

Design Engineer, South Central Regional Wastewater Treatment and Disposal Board, Delray Beach, Florida. Mr. Martinez participated in the planning, design, permitting, cost estimating, construction, and start-up phases of several projects. Mr. Martinez served as Project Manager for the design and construction phase of the 24mgd Reclaimed Water System Expansion which included deep-bed filters, chlorine contact basins, pre-stressed concrete storage tanks, transfer and distribution pumps, and a sodium hypochlorite on-site generation system. As design engineer, Mr. Martinez worked in the upgrade of the dewatering centrifuges, aerated sludge storage tanks; and diverse improvements projects involving pretreatment and aeration systems, secondary clarifiers, sludge pumping and odor control facilities.

Design Engineer, Miami Dade County NDWWTP High Level Disinfection Facilities. Mr. Martinez served as a process mechanical and civil design engineer for the Miami Dade County Water and Sewer Department NDWWTP 75 mgd High Level Disinfection Facilities including all proposed underground yard piping, potable water grid, sanitary sewer collection system, sodium hypochlorite storage and feed facility, chlorine contact basins, master lift station, five injection well heads and two monitoring well sampling stations.

Project Manager, Primary Headworks and Primary Clarifiers Odor Control System Rehabilitation, Boca Raton, Florida. Mr. Martinez served as a project manager in the design, permitting and construction administration of the City of Boca Raton primary headworks and primary clarifiers odor control system including collection and treatment of 50,000 cfm by a single phase wet chemical scrubber.

Design Engineer, Loxahatchee River District, Town of Jupiter, Florida. Mr. Martinez served as project engineer for the design of return and waste activated sludge systems, a solids storage and transfer system, solids de-watering, disinfection system, and reclaimed water facilities for the 2.0-mgd expansion to the existing 9.0-mgd Water Reclamation Facility.

35mgd Master Repump Station 5929 Rehabilitation, Palm Beach County Water Utilities Department, Florida. Design Engineer for the rehabilitation of the 34.6mgd inline booster master pump station 5229. The project comprised the replacement of two vertical non-clog pumps each rated for 24,000 gallons per minute (GPM) at 132' feet Total Dynamic Head (TDH); each pump includes a 1,000 HP VFD driven motor. The rehabilitation project also included mechanical piping, valves, emergency power generator, and electrical and instrumentation equipment.

Project Manager, New Submersible Wastewater Pump Station D2-C-1, Miami Dade Water and Sewer Department, Florida. Design of a new duplex submersible pump station for unsewered areas along NW 22nd Ave and NW 95th St and adjoining avenues.

Jennifer Prettel, P.E., PMP*Senior Project Manager***Education**B.S. – Civil Engineering, Florida
Atlantic University, 2010**Registration**Professional Engineer: Florida
(License No: 80377)Project Manager Professional:
(Credential No: 1873507)

Certified NASSCO PACP, MACP, LACP

Professional History

C Solutions, Inc. (2019 to Date)

Palm Beach County Water Utilities
Department (2009 to 2019)

Jennifer Prettel is a civil engineer experienced in the design of water distribution systems, wastewater collection and transmission systems, water reuse systems, hydraulic modeling, ArcGIS, asset management, water supply projects, sanitary sewer evaluation surveys, construction contract procurement and management, bidding assistance and permitting.

Hydraulic Modeler, NDWWTP– Potable Water Capacity Study, Miami Dade Water and Sewer Department, Florida. This project included the development of a new computerized network hydraulic model for the potable water system within the NDWWTP to evaluate the capability of the existing potable water system to meet the potable water and fire flow demands of both the existing and future HLD Facilities. The model will analyze shortfalls, evaluate solutions, and determine necessary system improvements required.

Project Manager, CD03 Water Distribution System Improvements, Palm Beach County Water Utilities Department, Florida. This project included the design, permitting and bidding for the abandonment and replacement of approximately 72,000 linear feet of water mains and the relocation and replacement of approximately 1,000 water service meters throughout the Palm Beach County Water Utilities Department service area.

Hydraulic Modeler, Potable Water Hydraulic Model, Palm Beach County Water Utilities Department, Florida. This project included creating the potable water hydraulic model for Palm Beach County Water Utilities Department. The model consisted of approximately 70,000 pipes, and 30,500 junctions. It included all water treatment plants with storage tanks and high services pump, demand allocations, calibration, diurnal curves, fire flow and water age analysis.

Hydraulic Modeler, NDWWTP– Flushing Water Capacity Study, Miami Dade Water and Sewer Department, Florida. This project utilized a created hydraulic model to evaluate the existing demands of the Onsite Process Water System at the NDWWTP and determine whether a piping connection to the proposed High-Level Disinfection (HLD) System injection well piping water supply loop would be capable of supplying 5.3mgd to the Onsite Process Water System and if so, providing a preliminary design layout.

Hydraulic Modeler, Wastewater Hydraulic Model, Palm Beach County Water Utilities Department, Florida. This project included creating the wastewater hydraulic model for Palm Beach County Water Utilities Department. The model includes elements representing the network of master pump stations, lift stations and pressurized force mains. The model elements include 2000 pipes, 1,700 junctions, 25 pumps, 655 lift stations without pumps, and two reservoirs.

Hydraulic Modeler, South County Reclaimed System Hydraulic Analysis, Palm Beach County Water Utilities Department, Florida. This project included creating the reclaimed hydraulic model for Palm Beach County Water Utilities Department to serve a portion of the demand for nine golf courses in the South County area with 10 MGD of reclaimed water from Broward County Utilities.

Hydraulic Modeler, Integrated Utility Master Plan, Palm Beach County Water Utilities, Florida. This project included the update of the water and wastewater hydraulic models for PBCWUD's Western Water and Wastewater Systems. The updated water model was utilized to evaluate the existing system water distribution system to identify deficiencies, evaluate fire flow capabilities, and determine the adequacy of existing pump station and overall storage. The Wastewater model updated the existing network and inflows and created new extended period simulations.

Hydraulic Modeler, Raw Water Well Field Model, Palm Beach County Water Utilities, Florida. This project included the creation of hydraulic models for the well field of all water treatment facilities owned and operated by Palm Beach County Water Utilities Department.

Design Engineer, Western Force Main By-Pass and Water Main Improvements, Palm Beach County Water Utilities Department, Florida. This project included the design and permitting of 12,700 LF of 30-inch force main, 2,200 LF of 16-inch water main including an aerial crossing, 1,600 LF of 12-inch water main, and 230 LF of 48" jack and bore steel casing with 30-inch force main.



GEORGE G. GENTILE, PLA, FASLA

SR. PRINCIPAL

Education

University of Florida, Bachelor of Landscape Architecture, 1977

Palm Beach Junior College (Palm Beach State College),
Associates in Arts – Architecture 1973

Honors

Fellow, American Society of Landscape Architects
National Trustee/Past President of the Florida
Chapter of the ASLA

Faculty Award, Department of Landscape
Architecture, University of Florida

Past President of the Palm Beach/Treasure
Coast Section of the American Society of
Landscape Architects

Landscape Architect of the Year – AIA 2006

Registrations

Professional Landscape Architect: Florida #LA0000530
CLARB Certification: #1138

Affiliations

American Society of Landscape Architects

American Planning Association

Palm Beach County Planning Congress

PGA Corridor Association

Palm Beach North Chamber

Economic Council of Palm Beach County

Florida Green Building Coalition (FGBC)

International Society of Arboriculture

Marine Industries Association of Palm Beach County

Professional Experience

Mr. Gentile has over 40 years of experience in landscape architecture, land planning and environmental consulting including experience as a planning official for the City of Vero Beach, Florida and Palm Beach County. His planning experience includes development of Palm Beach County's first comprehensive plan, including the development of plans for several municipalities, development of zoning codes, land development regulations and regional planning activities for both public and private clients. He is a court certified expert in his field and has testified in courts in Martin and Palm Beach County as well as testifying in several administrative review processes throughout the State of Florida. Since 1988 he has been responsible for the development and management of a full-service landscape architectural, planning and environmental consulting office in South Florida. His experience includes:

Parks and Environmental Projects

Boynton Beach Master Park Plan 2023 **Re**

Busch Wildlife Center Relocation – *Principal-in-Charge, Principal Planner*

Location: Jupiter Farms, Florida

Client: Non-Profit Busch Wildlife

Scope: Landscape Architecture and Planning

2GHO provided initial concepts for a new site for the successful wildlife rehabilitation hospital and visitors center. 2GHO assisted all through site plan approvals, site design, landscape design and construction resulting in a successful relocation.

Dyer Landfill End Use Plan & Park Design – *Landscape Architect*

Location: West Palm Beach, Florida

Client: Solid Waste Authority of Palm Beach County

Scope: Site Planning & Landscape Architecture

Receiving national recognition, this was cutting edge to move entire eco-systems to surround the old landfill as well as creating a major active sports complex on the land surrounding the old Dyer Land Fill.

Minor League Training Facility-Montreal Expos – *Planner/Landscape Architect*

Location: Santaluces Community High School, Palm Beach County, Florida

Client: Montreal Expos, Palm Beach County, Palm Beach County School Board.

Scope: Master site planning, construction documentation, Public Presentations, Landscape Architecture and assistance with construction contract administration.



EMILY M. O'MAHONEY, PLA,

FASLA

PRINCIPAL

Education

University of Florida,
Bachelor of Landscape Architecture 1980

Honors & Recognitions

Elected as National ASLA President 2022-2023
University of Florida Distinguished Alumni Award (2022)
Fellow, American Society of Landscape Architects (2017)
ASLA National Service Award (2016)
University of Florida Alumni Service Award (2011)
FNGLA Award of Excellence Meditation Garden (2008)
FL/ASLA Award of Merit Meditation Garden (2008)
FL/ASLA Award of Merit Pahokee Eco-Island Study (2008)
FL/ASLA Award of Honor Limestone Creek Elementary Children's Planting Program (2002)
FL/ASLA Award of Excellence in Residential (1998)
FL/ASLA Service Awards (1995, 1996, 1997, 1998)
Faculty Award, Department of Landscape Architecture University of Florida (1980)
ASLA Certificate of Merit in the Study of Landscape Architecture (1980)
ASLA President's Recognition for Outstanding Contribution (1980)
Howard Sebolt Award (1980)
Elected to the Gargoyle National Architectural Honor Society (1980)

Registrations

Professional Landscape Architect: Florida #684,
LEED® AP BD+C

Affiliations

American Society of Landscape Architects
Council of Landscape Architecture Registration Boards
Palm Beach County Planning Congress
Palm Beach North Chamber of Commerce
U.S. Green Building Council (USGBC)

Professional Experience

Ms. O'Mahoney has over 40 years of experience in landscape architecture and site planning with emphasis on conceptual and detailed design for all scales. Since 1993 she started her own company and then joined with George G. Gentile & Associates, Inc. in 1998 as a partner to combine professional skills and abilities in one company. Prior professional experience has been with private landscape architecture firms in the South Florida Area. Sustainability is not only reflected in Emily's design and professional work but carries over at home with a photovoltaic array reducing the family's carbon footprint.

Emily views landscape architecture as design of outside space, creating a strong sense of place and working with nature to create beautiful places and spaces. Every day and with every project, she approaches design and problem solving from an artistic angle in a sustainable manner.

Parks and Environmental Studies

Green Cay Phase 2 – Principal-in-Charge, Project Manager

Location: Western Palm Beach County, Florida
Client: Palm Beach County Water Utilities
Scope: Landscape Architecture and Planning
2GHO provided site layout plans, landscape and irrigation plans along with administrative site modifications to the South Regions Water Reclamation Site and for Green Cay Park. A new water purification facility with an education center has been design for the facility site and a park to receive 2 million gallons of purified water per day to feed the aquifer. 2GHO designed the trail system, lake edge treatments, playground and picnic area along with other amenities using a restorative landscape system of planting. 2GHO worked closely with the Civil Engineer to achieve the grading necessary to meet the water storage requirements and enhance the lake edge.

Ezell Hester Park – Principal-in-Charge, Project Manager

Location: Boynton Beach, Florida
Client: City of Boynton Beach
Scope: Landscape Architecture and Planning
While the renovation of this recreation park started small, it turned into a major overall including artificial turf for the ball fields, parking expansion, relocation of playground, tennis court etc. 2GHO has lead of team of design professionals in providing services needed to execute this work. Phase one completion in late 2023.

Professional Licenses (Firm)



LICENSEE DETAILS

9:51:22 AM 11/1/2023

Licensee Information

Name:	COLLIERS ENGINEERING & DESIGN, INC. (Primary Name)
Main Address:	331 NEWMAN SPRINGS ROAD SUITE 203 RED BANK New Jersey 07701
County:	OUT OF STATE

License Information

License Type:	Engineering Business Registry
Rank:	Registry
License Number:	30301
Status:	Current
Licensure Date:	05/09/2013
Expires:	



License Type	License#	Issued	Expires	Status
COLLIERS ENGINEERING & DESIGN, INC.				
331 NEWMAN SPRINGS RD STE 203, RED BANK, NJ 07701-5691 Phone 877-627-3772				
Surveyor Business	LB7388	03/15/05	02/28/25	Active
Surveyor of Record	LS6941	06/02/13	02/28/25	Active
COLLIERS ENGINEERING AND DESIGN				
331 NEWMAN SPRINGS RD STE 203, RED BANK, NJ 07701-5691 Phone 732-383-1950				
Continuing Education Provider	CE101	11/05/19	05/30/23	Active



Licensee Information

Name:	O'ROURKE, SEAN (Primary Name) BERGMANN ASSOCIATES, ARCHITECTS, ENGINEERS, LANDSCAPE ARCHITECTS (DBA Name)
Main Address:	181 WASHINGTON STREET STE 430 CONSHOHOCKEN Pennsylvania 19428
County:	OUT OF STATE
License Mailing:	181 WASHINGTON STREET SUITE 430 CONSHOHOCKEN PA 19428
County:	OUT OF STATE

License Information

License Type:	Architect
Rank:	Architect
License Number:	AR99311
Status:	Current,Active
Licensure Date:	02/08/2018
Expires:	02/28/2025



Landscape Architects
Planners
Environmental
Consultants

Licensee Information

Name: GENTILE, GEORGE G (Primary Name)
2GHO, INC. LANDSCAPE ARCHITECTS, PLANNERS, ENVIRONMENTAL CONSULT (DBA Name)
Main Address: 1907 COMMERCE LANE
SUITE 101
JUPITER Florida 33458
County: PALM BEACH

License Information

License Type: Registered Landscape Architect
Rank: Landscape Arc
License Number: LA0000530
Status: Current,Active
Licensure Date: 09/06/1978
Expires: 11/30/2025



Licensee

Name: DRUMMOND, MARK S. License Number: 57428
Rank: Professional Engineer License Expiration Date: 02/28/2025
Primary Status: Current Original License Date: 07/19/2001
Secondary Status: Active

Related License Information

License Number	Status	Related Party	Relationship Type	Relation Effective Date	Rank	Expiration Date
27885	Current	C SOLUTIONS INC.	Registry	01/04/2008	Registry	

Professional Licenses

Ron DeSantis, Governor
Melanie S. Griffin, Secretary

STATE OF FLORIDA

BOARD OF PROFESSIONAL ENGINEERS

THE PROFESSIONAL ENGINEER HEREIN IS LICENSED UNDER THE PROVISIONS OF CHAPTER 471, FLORIDA STATUTES

O'KREPKY, MICHAEL JOHN
7284 WEST PALMETTO PARK
SUITE 201-S
BOCA RATON FL 33433

LICENSE NUMBER: PE89347
EXPIRATION DATE: FEBRUARY 28, 2025
Always verify licenses online at MyFloridaLicense.com

Do not alter this document in any form.
This is your license. It is unlawful for anyone other than the licensee to use this document.

Ron DeSantis, Governor
Melanie S. Griffin, Secretary

STATE OF FLORIDA

BOARD OF PROFESSIONAL ENGINEERS

THE PROFESSIONAL ENGINEER HEREIN IS LICENSED UNDER THE PROVISIONS OF CHAPTER 471, FLORIDA STATUTES

COSTA, LUIS ALFONSO
430 N E 2ND ST
BOCA RATON FL 33432-0000

LICENSE NUMBER: PE40930
EXPIRATION DATE: FEBRUARY 28, 2025
Always verify licenses online at MyFloridaLicense.com

Do not alter this document in any form.
This is your license. It is unlawful for anyone other than the licensee to use this document.

Ron DeSantis, Governor
Melanie S. Griffin, Secretary

STATE OF FLORIDA

BOARD OF PROFESSIONAL ENGINEERS

THE PROFESSIONAL ENGINEER HEREIN IS LICENSED UNDER THE PROVISIONS OF CHAPTER 471, FLORIDA STATUTES

ARRIETA, JOHN FREDERIC
6665 HOULTON CIRCLE
LAKE WORTH FL 33467

LICENSE NUMBER: PE61370
EXPIRATION DATE: FEBRUARY 28, 2025
Always verify licenses online at MyFloridaLicense.com

Do not alter this document in any form.
This is your license. It is unlawful for anyone other than the licensee to use this document.

Ron DeSantis, Governor
Melanie S. Griffin, Secretary

STATE OF FLORIDA

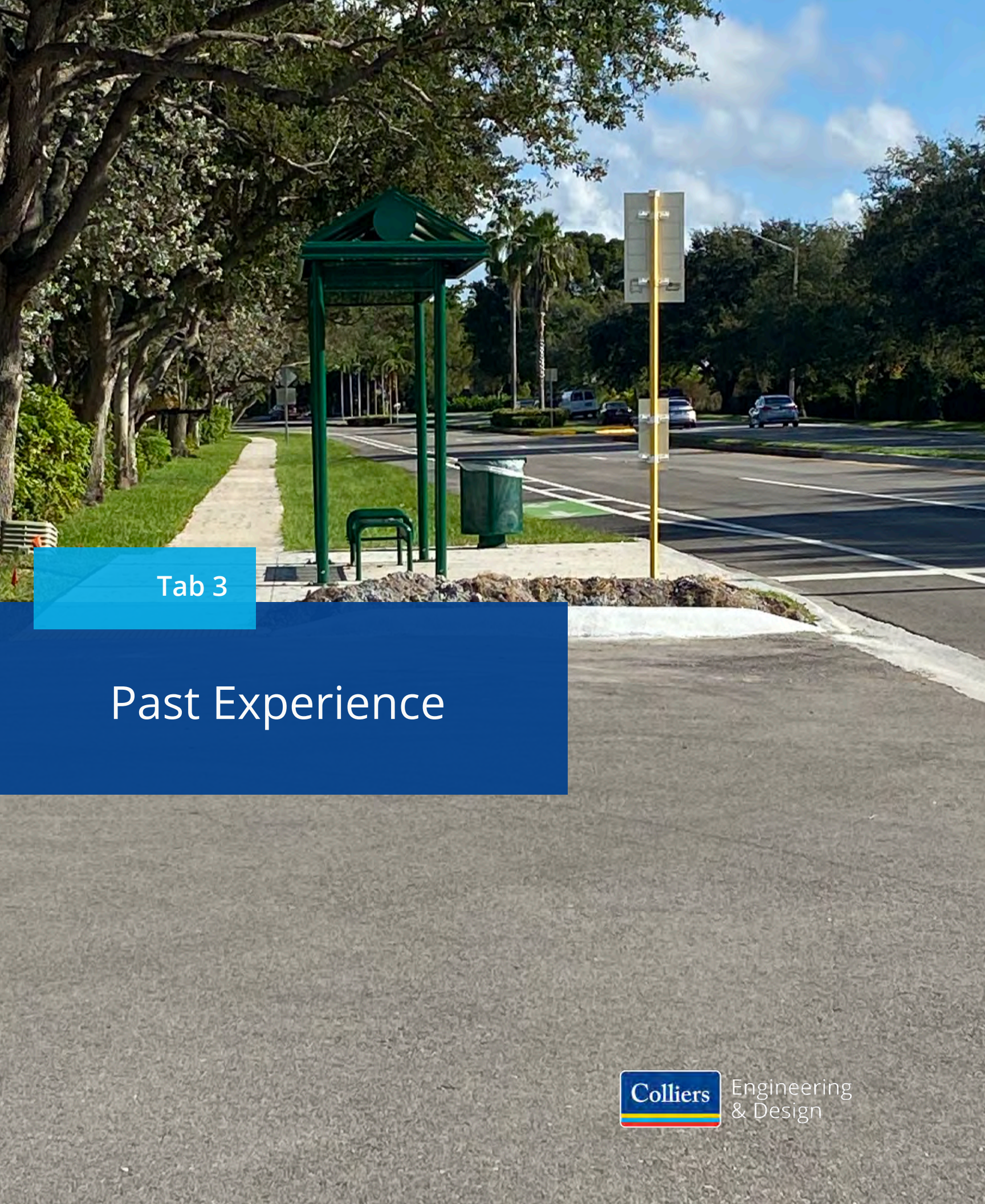
BOARD OF PROFESSIONAL ENGINEERS

THE PROFESSIONAL ENGINEER HEREIN IS LICENSED UNDER THE PROVISIONS OF CHAPTER 471, FLORIDA STATUTES

DRACHEV, PAVEL
10026 AKENSIDE DR.
BOCA RATON FL 33428

LICENSE NUMBER: PE95334
EXPIRATION DATE: FEBRUARY 28, 2025
Always verify licenses online at MyFloridaLicense.com

Do not alter this document in any form.
This is your license. It is unlawful for anyone other than the licensee to use this document.



Tab 3

Past Experience



Engineering
& Design

CED's key staff have provided professional engineering and consulting services on numerous projects for multiple organizations throughout the US for over 35 years. We understand the overall Town's needs and expectations for this contract. We will leverage this experience to help manage and execute this contract successfully for the Town. CED is currently contracted and/or providing a full spectrum of a multitude of services through similar professional services contracts for multiple municipalities including the projects and clients outlined in this section below.

Please note that, as of November 1, 2021, Bergmann, D.P.C. joined Colliers Engineering & Design to further enhance the mutual strengths, resources, and capabilities of each firm and help our clients meet their own strategic goals. This new collaboration allows us to greatly expand services, expertise, and depth of experience while allowing us to operate independently and tailor our services to your specific needs. This proposal represents the qualifications of Colliers Engineering & Design and its trusted affiliates, independent contractors, and/or business partners.

Related Experience



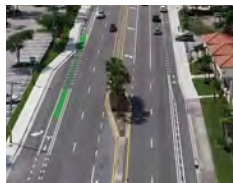
South Kentucky Avenue Improvements (General Services Contract), City of Orange City, FL. Design provided professional services for a private road that was being considered for acquisition by the City. Professional services included roadway design, drainage design, geotechnical evaluation, pavement evaluation, planning, and construction cost estimates. The out of service and out of date roadway alignment required rehabilitation and redesign to bring to modern safety standards. The alignment consisted of an approximately 6/10-mile length, two-lane residential roadway.



SRQ International Airport Multiple Assignments, Sarasota, FL. CED has provided a number of technical services for the airport on a variety of assignments which have included environmental, SUE, and geotechnical for evaluation of a former landfill for remediation and use for future land development for airport uses. For example, Stormwater Pipe Depressions Evaluation - CED provided SUE services, geophysical analyses, and geotechnical exploration of a distressed stormwater pipe crossing the runway and multiple taxiways at the airport.



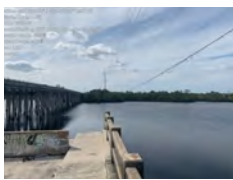
Independent Contractor Engineering Services, City of Bradenton Beach, FL. Task work order (TWO) based City of Bradenton Beach Miscellaneous Services contract. We have held this contract since 2021 and are qualified to support the city for any miscellaneous professional engineering & surveying services. Multiple assignments have supported the City's MS4 program, roadway drainage infrastructure improvements, grant application development, parking lot design, permitting support, bidding support, geotechnical, and survey.



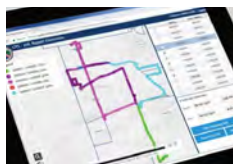
SR 5/US 1 from Beach Road to County Line Road, Palm Beach County, FL. CED provided transportation and drainage design. Also provided utility coordination and design on Roadway, Signalization and Traffic Control Plans for this 6-lane undivided, urban RRR project. Responsibilities include overall project coordination, plans preparation, preparation of Design Variations and Memos, and LFA/MOA coordination. Additional improvements such as ADA deficiencies resulting from a safety study and pedestrian scale lighting were included in the scope. Prepared plans and completed coordination tasks for major phase submittals.



I-95/SW 10th Street Connector, Deerfield Beach, FL. As a key regional connection in Broward County, Florida, SW 10th Street currently serves as a critical transportation corridor between I-95 and the Sawgrass Expressway. This project includes the design of two roadways along the 3-mile corridor. One roadway, the SW 10th Street connector lanes, will improve regional connectivity by connecting the Sawgrass Expressway with I-95. The other roadway, local SW 10th Street, will become a "Complete Street" that will incorporate a shared-use path and provide connectivity to all existing local properties and the local roadway network. The two roadways will work together to alleviate traffic congestion in the area, improve operations and safety, and improve emergency evacuation operations. CED provided topographic survey, SUE meeting ASCE 38-22 criteria (QL-B and QL-A), and Utility Coordination as a subconsultant to HDR, Inc. for the design of the improvements required for this dual roadway design concept.

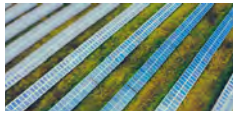


TECO, Environmental Permitting Services, Tampa, FL. CED provided permitting services for this project which proposed to cross a waterbody that is classified as a Section 10 Water under the National Harbor and Rivers Act, the project would require an Environmental Resource Permit and authorization from the Hillsborough County EPC. Upon completion and coordinating with TECO Project Managers, it was determined that the Project could be covered as a "replacement" and therefore avoiding the time consuming effort of obtaining a permit.



Broward County Sheriff's Office – GIS General Services Support Services, Broward County, FL. CED built a First Responder Mobile application for BSO. The application included calls for service, routing with voice-guided turn-by-turn directions, and Pictometry integration. It was initially rolled out to Fire Vehicles and then Sheriff Vehicles (300+ vehicles). CED has been actively working with BSO ever since in various capacities. As a part of the GIS Technical Support project, CED provides a broad range of services to BSO.

Related Experience Cont.



Commercial Solar Feasibility Study Confidential Client (Major Utility), Tampa, FL. CED was contracted to research the development, in collaboration with the utility, of a repeatable program for rooftop solar installations throughout the utilities service territory.



Independent Contractor Engineering Services, City of Holmes Beach, FL. Task work order (TWO) based City of Holmes Beach miscellaneous services contract. We have held this contract since 2022 and are qualified to support the city for any miscellaneous professional engineering & surveying services. Multiple assignments have supported the city's with structural boardwalk improvements, Resilient FL grant application development, planning, permitting support, bidding support, CEI and construction administration.



SR 417 Highway Widening and Improvement CFX), Orange County, FL. From the initial design studies for State Route 417, the Central Florida Expressway Authority (CFX) has always envisioned an ultimate six-lane expressway to account for future growth and increased demand. The plan has been to widen the existing four-lane corridor by adding two median lanes, one in each travel direction. CED provided topographic survey, subsurface utility engineering, Mobile LiDAR, and UAS LiDAR services to CFX as a subconsultant to Horizon Engineering Group, Inc. in support of the design of highway widening and various other improvements along State Route 417 from Landstar Boulevard to Boggy Creek Road.



WAWA John Young Parkway & Destination Parkway, Orlando, FL. CED provided professional consulting services which included a Phase I Environmental Site Assessment (ESA), Limited Phase II Environmental, and geotechnical Investigation. The ESA performed was to identify recognized environmental conditions (RECs), historic recognized conditions (HRECs), and controlled environmental conditions (CRECs), as defined in United States Environmental Protection Agency (USEPA) rules under 40 CFR Part 312 Standards and Practices for All Appropriate Inquiries (AAI), and the American Society for Testing and Materials (ASTM) Standard Practice for Environmental Site Assessments: E 1527-13 and 21. The purpose of the Limited Phase II Investigation was to determine if underground storage tanks (USTS) are present and if regulated compounds are present in soil or groundwater samples at concentrations exceeding Florida Department of Environmental Protection (FLDEP) standards. The geotechnical exploration was performed in general accordance with the "WAWA Geotechnical Investigation Standards for Florida Stores, sound engineering practice, and state/local regulations to evaluate subsurface conditions for the proposed project.



LRP Properties Due Dilligence, Jupiter, FL. CED in cooperation with our parent Firm Colliers International completed an expedited due diligence of a four-story structure building, occupying 63,108 square feet and common parking garage. The building is occupied by multiple office tenants.

CED performed a property condition assessment (PCA) of the structural, mechanical, electrical & plumbing components of the buildings, a Phase I Environmental Site Assessment (Phase I ESA) in accordance with the American Society for Testing and Materials (ASTM) Standard E1527-13 and a survey in compliance with the minimum standard detail requirement for ALTA/NSPS Land Title Surveys (Effective February 23, 2021). The survey included Items 1 through 4, 6(a), 7(a), 8, and 9 of Table A of the standard.



Park Avenue/Market Plaza Streetscape, Lake Wales, FL. CED was engaged to provide project management services for the construction of a complete streetscape consisting of the reconstruction of Park Avenue and Market Plaza. The scope includes the reconstruction of Park Avenue from Wetmore Street to SR 17, 1st Street from Park Avenue to Stuart Avenue, SR 17 from Stuart Avenue to Orange Avenue, Park Avenue from SR 17 to Cypress Garden Lane, and Market Plaza from Park Avenue to Stuart Avenue. The scope also includes the reconstruction of the sidewalks, street, parking with pavers/bricks, additional amenities including markings, lighting, landscaping, irrigation, signage, rain gardens, utility relocation, storm sewer system, curbing, fiber, signalization, and other miscellaneous items.

Related Experience (C Solutions)



Reuse System Canal Pump Stations and Weirs, City of Cape Coral, FL. C Solutions Inc. performed the preliminary and final design required to modify two existing fixed weirs to adjustable weirs and construct two new freshwater canal pumping stations. These improvements will increase wet weather storage within the freshwater canal system and provide an estimated 4.3 mgd of additional reuse water in the dry season while allowing for maintenance of flood control during large storm events.



Miami Dade NDWWTP HLD Yard Piping, Miami Dade Water and Sewer Department, Miami FL. C Solutions Inc. was retained in part to perform all yard piping and site civil design for the new 75mgd High Level Disinfection Facilities. This included piping of various sizes and materials from 2-inch CPVC chemical piping to 72-inch ECP process pipelines and the site civil for new roadways, restoration of existing roadways, and stormwater collection. The estimated construction cost for site civil and yard piping is \$25 million dollars with a construction estimate of \$17 million dollars for yard piping alone. The yard piping consisted of various small diameter CPVC chemical piping, 6-to-8-inch WM-DI, 6-inch FM-DI, 8-inch PVC sanitary sewers, injection well piping including 16, 24 and 30-inch DI, 48 and 60-inch ECP (pressure concrete pipe), 60-inch ECP secondary effluent, 42-inch DI chlorine contact basin effluent piping and 48 and 72-inch ECP filter effluent piping.



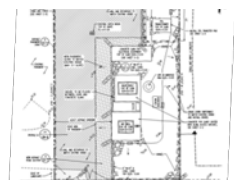
Kings Point Flanders and Capri Water Main Replacement, Palm Beach County Water Utilities Department, Palm Beach County, FL. C Solutions Inc. has been retained by Palm Beach County Water Utilities (PBCWUD) to provide design services for the replacement of approximately 18,500 linear feet of potable water main ranging from 8 to 12 inches in diameter. These improvements consisted of replacement of potable water mains, new fire hydrants, and new water services up to the connection with the existing water meters that varied dramatically in location. In July 2022 a water main failure in Kings Point caused a large sinkhole to form and was the center of the news in the area. PBCWUD immediately requested C Solutions to fast track the design of the water main replacement project, which went from 60-100% completion in 2 weeks. The project was successfully advertised and publicly bid on October 2022 and is anticipated start construction in the summer of 2023 where C Solutions will provide engineering services during construction including reviews of RFIs, shop drawings, change order requests and limited construction inspection services. Additionally, C Solutions will be assisting in public relations outreach given the sensitive nature of performing work within an active retirement community



City of West Palm Beach - Brevard Avenue PCCP Emergency Repair, City of West Palm Beach, FL. C Solutions Inc. was retained to analyze the rupture along with the temporary patch made and recommend the best course of action for the permanent repair of the concrete pipe. C Solutions reviewed the options for repair of the broken water main and provided repair options in technical memorandum to the WPB and the emergency contractor for the city. C Solutions also provided field inspection services during construction to coordinate the repair between WPB, contractor and PCCP piping manufacturer once the pipe was fully exposed and exact condition of the pipe could be fully observed. The pipe was successfully repaired in a timely manner without any loss of potable water service.



Palm Beach County Collection System Rehabilitation Project, Palm Beach County, FL. C Solutions Inc. provided services to perform NASSCO MACP inspections and the evaluation of sanitary sewer manholes for the identification of capital improvement projects to reduce infiltration and inflow to the County's sanitary sewer collection system.



New Submersible Wastewater Pump Station D2-D3, Miami-Dade County, FL. C Solutions Inc. provided a preliminary design report, engineering design, permitting, and limited construction services for the new duplex submersible pump station and associated structures and piping. The pump station was designed with two 30 hp submersible pumps and a 6-inch discharge to meet future flow estimated of 315 gpm. New pavement was designed to facilitate site access and maintenance, while new gravel area was implemented to improve site drainage and future maintenance of underground piping. C Solutions was also required to assist in the coordination of a new project site within the area when the originally planned easement on a church property did not get finalized. Additionally, the project was put on an extended hold (a couple years) not only for easement issues but for the redesign of the sanitary sewer system which in the original design ended up being too deep at the location of the new pump station.

Related Experience Cont. (C Solutions)



Rehabilitation and Replacement of Lift Station No. 10., Riviera Beach, FL. The City of Riviera Beach Utility District (RBUD) owns and operates 51 wastewater lift stations in its service area. Of these, five lift stations (LS) are considered master pump stations: LS50, LS47, LS1A, LS10 and LS12. LS10 is a duplex submersible station that repumps all flow from Singer Island to LS1A where it is repumped with other flows from the eastern part of the City to LS50. Lift Station 10 is critical to the collection and transmission of wastewater on Singer Island. LS10 has passed the end of its estimated useful design life and requires major repair.

C Solutions Inc. evaluated the conditions of the lift station and made recommendations for its improvement and rehabilitation. C Solutions recommended rehabilitating the existing wetwell and reconfiguring the station to a triplex submersible pump station with smaller pumps, to better handle the seasonal changes in flow on Singer Island. Following the approval of the recommendations, C Solutions provided the design, permitting and construction management for the rehabilitation of LS10.



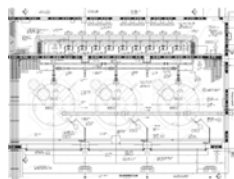
Rehabilitation and Replacement of Lift Station No. 50., Riviera Beach, FL. C Solutions Inc. evaluated the conditions of the lift station and recommended a small reconfiguration of the transmission system, finding that LS1A could pump directly to ECRWRF, and replacing LS50 with an above ground 5.8mgd inline booster station located adjacent to the existing pump station on the same property. This provided a large capital cost savings for the rehabilitation of LS50 while improving system reliability and greatly reducing operations and maintenance cost. Following the approval of the recommendations, C Solutions provided the design, permitting and construction management for the replacement of LS50 with an above ground inline booster station.



Las Olas Bacteriological Clearance Plan, City of Fort Lauderdale, FL. C Solutions Inc. provided emergency design services to analyze the existing conditions and currently existing recommendations and formulate a plan to achieve bacteriological clearance in the shortest time possible. C Solutions was called on a Thursday evening and by 3pm on Friday afternoon had formulated a new plan that was submitted to the Florida Department of Protection. On Saturday morning, C Solutions presented the plan to the City Manager and by Saturday afternoon was implementing the plan with City staff and staff from Murphy Pipeline and Cardinal Contractors. By Monday morning testing had confirmed the success of the implemented plan and the cautionary boiled water was lifted for the Las Olas Isles.



Water Treatment Plant No. 8 Process Improvements, Palm Beach County Water Utilities Department, Palm Beach County, FL. C Solutions Inc. has been designing process improvements for the 30mgd facility, including a new THM removal system, lime softening flume improvements, rehabilitation of the softener blowdown pump station, new emergency lime solids pond overflow pump station and other miscellaneous plant-wide improvements for plant water service and process flow meters. C Solutions coordinated with structural, architectural, electrical and instrumentation categories to prepare the final design plans.



Sodium Hypochlorite Facility - Design, Permitting and Bidding Services, City of Riviera Beach, FL. C Solutions Inc. evaluated the existing site and recommended a layout for the new process facilities to fit within the existing site footprint and allow construction while maintaining operations with the gas chlorination system. C Solutions is providing professional engineering services for the design, permitting and construction bidding assistance for new sodium hypochlorite disinfection facilities to replace the existing chlorine gas system. The proposed facilities include: a new building housing the feed pumps, electrical equipment, new MCC and bulk storage tanks; electrical equipment (including relocation of MCC3); chemical piping, valves and appurtenances to convey NaOCl to chemical injection points in treatment plant; new flow meters for measurement of WTP flow and flow pacing of NaOCl chemical injection; NaOCl storage tanks; and a recarbonation system for pH control.



Packed Tower Aerators Design Evaluation, City of Riviera Beach, FL. The City of Riviera Beach (City) owns and operates a lime softening water treatment plant (WTP) with a design capacity of 17.5mgd. The City's WTP's packed tower aeration system, consisting of four packed tower aerators, was installed in 1986 for removal of volatile organic compound (VOC) contamination detected in the Eastern Wellfield. The media, some of the blowers and the cleaning system needed replacement.

C Solutions Inc. evaluated water quality sampling and prepared base design criteria required to develop bid documents for the rehabilitation of the aeration system.

Related Experience (2GHO)



Palm Beach County, FL. Continuing services including site plans, amendments, landscape plans, rezonings and ZAR's for fire stations, a homeless resource center, and the Fire Department Fleet Service Center in recent years.

Development of park and public space conceptual plans, site planning and development of park and public space plans:

- Green Cay Phase 2 – Water Utility Department Progressive Design Build for water purification facility and receiving lake/public park (construction start 2024)(CDM Smith)
- Ball Park of the Palm Beaches FITTEAM - PBC in conjunction with Teams (2017)
- Palm Beach County Riverbend Park Expansions, Prime: C3TS (2013-2017)
- Palm Beach County Phil Foster Park redevelopment, Prime: LBFH (completed 2007 – 2010)
- Palm Beach County Burt Reynolds Park redevelopment, Prime: LBFH (completed 2009), and west side Prime: Civil Design (completed 2017)
- Palm Beach County's Riviera Beach Moroso Boat Launch Park, Prime: LBFH (completed 2010)
- Palm Beach County Jupiter Farms Equestrian Park, Prime: LBFH (completed 2010)
- Palm Beach County Gramercy Park, Prime: C3TS (future - 2014)

Development of entryway, identification and interpretive signage:

- Palm Beach County Lake Okeechobee Scenic Trail (LOST) Economic Enhancement Interpretive Kiosks (2010)

Additional Projects:

- Palm Beach County Convention Center in West Palm Beach – redesign of the public space and working with Art in Public Spaces Program (2018-2022)



Town of Jupiter, FL. Development of park and public space conceptual plans, site planning and development of park and public space plans:

Development of park and public space conceptual plans, site planning and development of park and public space plans:

- Town of Jupiter Gateways (2021)
- Town of Jupiter Jones Creek Park Canoe Launch (2009 & 2016)
- Town of Jupiter Cinquez Park (2016 – CA by others)
- Town of Jupiter Alternate A-1-A Streetscape (2012)
- Town of Jupiter Island Way South, Prime Calvin-Giordano (2016-on going)
- Town of Jupiter Water Plant Expansion, Prime: Hazen & Sawyer (completed 2011)
- Town of Jupiter Public Works Facility, Prime: Hazen Sawyer (completed 2005)

Development of entryway, identification and interactive signage:

- Town of Jupiter Gateways at Turnpike, Triangle and Center Street (2022)
- Town of Jupiter Riverwalk Interpretive Kiosk for the Tierra del Sol and Waterpointe projects (2010 and 2016)

Pedestrian and bikeway design and specifications:

- Town of Jupiter A-1-A Bike Lane Redevelopment, Prime: Calvin-Giordano (2013 to 2016)
- Town of Jupiter Riverwalk Design at River Plaza (2012)
- Town of Jupiter Riverwalk Design at Water Pointe (2013)

Additional projects:

- Town Gateways at the Turnpike and Center Street with iconic landscape material and no irrigation. (completed 2021)
- A-1-A Bike Lane Redevelopment, Landscape Architecture & Planning Services, Prime: Calvin-Giordano (2013 to 2016)
- Island Way South roadway extension (2017-on going)
- Water Plant Expansion, Landscape Architecture & Planning, Prime: Hazen & Sawyer (completed 2011)
- Public Works Facility, Landscape Architecture & Planning, Prime: Hazen Sawyer

A photograph of a surveying station on a tripod in a field. The station is a grey, cylindrical device with a yellow stripe and a control panel. In the background, a worker wearing a white hard hat and a high-visibility vest is standing near the open back of a white pickup truck. The scene is outdoors with trees and a cloudy sky.

Tab 4

Approach to Project Management

At CED, we have developed a successful, fit-for-purpose project delivery process that includes budget, quality control/quality assurance, and schedule control methodologies. Backed by our prior experience serving as municipal engineering consultants, we understand the responsibility for transparent planning and accountability when using public funds. Therefore, we strive to establish Opinions of Probable Construction Cost (OPCC) early within the design process and refine as design progresses continually working to align your available funding and the included project elements.

Utilizing specialized financial tracking software, we also closely monitor our labor and expenses on a weekly basis allowing our project manager to proactively respond and control our contract costs. Throughout design and our Quality Assurance/Quality Control management program, we utilize our Construction Engineering Inspection team to collaborate on constructability and value engineering perspectives. We also have staff experienced in lifecycle analysis, sustainability, and resiliency.

Due to our public experience, we also understand the importance of governmental procedures, the basis for them, and what happens when they aren't followed. We are committed to following the Town's procedures to support the Town and minimize potential owner induced delays. Lastly, CED relies heavily on internal/external communication, internal milestones, and scheduling software to ensure that we deliver on time and within budget. These management controls are further described in concert with time-tested procedures utilized by CED below:



Project Approach

This is a task-based work authorization contract with each assignment negotiated on an individual basis. CED will be responsible for reviewing and evaluating the requirements and expectations for each assignment and recommending an approach tailored to meet all specific scope elements. Upon receipt of any assignment, our Project Manager, Michael O'Krepky, PE, will thoroughly review the scope of services and related information provided by the Town to assess all aspects of a potential task, such as, project characteristics, determine safety and Temporary Traffic Control (TTC)/Maintenance of Traffic (MOT) needs and note any special coordination, access issues or potential permits required. This review will allow us to recommend the appropriate scope requirements, schedule and economics when determining the plan of action on the task assignment in a follow-up coordination meeting with the Town's Project Manager for consensus prior to staff hour development.

One of the most important parts of any successful project is proper communication with all stakeholders during all phases of project cycle. CED holds periodic meetings with the client, stakeholders and team staff to properly understand challenges, review of anticipated projects or planning efforts.

Mr. O'Krepky's experience provides him with an excellent understanding of the level of effort required for each assignment and is a proponent of fit-for-purpose approaches. Having negotiated numerous task assignments on our existing and previous contracts, Mr. O'Krepky understands the typical expectations regarding anticipated work efforts and how to efficiently utilize personnel. He will be responsible for the overall budget maintenance of the contract. Mr. O'Krepky thinks outside the box and is extremely mindful of his clients. He is highly self-managed to ensure a successful design, task, and/or project completion.

Work Assignment Proposal Development. Upon notification of a request for a new assignment proposal, Mr. O'Krepky will coordinate directly with the Town's Project Manager to fully understand the needs and scope of the project. He will then work closely with our team leaders to build a specific project team whose skillsets and expertise are most appropriate for the assignment. It is important to note that many of the team members shown on the Organizational Chart have multiple specialties and overlapping skill sets which we will utilize all the team's resources to ensure appropriate utilization of staff for the Assignment. Our proposed project team, including subconsultants, will be clearly documented in the proposal with the team's roles and responsibilities. The project team will be relied upon to develop a comprehensive proposal to execute a successful project. By involving the individuals with the specific technical expertise at the proposal development stage, our proposal and budgets are directly established by these key individuals that will be relied upon to deliver the assignment. Mr. O'Krepky will review and prepare the final budget to ensure that it is both comprehensive and efficient at addressing the project goals.

Project Task Initiation. Preparation of the staff hour estimate and fee will then be completed and submitted for review and negotiation. Each Assignment will include a kickoff meeting to review the approach, schedule milestones, design, permitting, site specific safety requirements, field documentation, and project specific QC plan. We understand that each assignment is different, and our approach will match the specific project assignment.

Potential critical issues that will impact this contract include meeting defined schedule needs, providing clear communication throughout the life of each project assignment, maintaining resource availability and quality

deliverables to ensure confidence in your engineering services consultant.

Task Delivery. Mr. O’Krepky will ultimately be accountable for delivering all assignments on-time and within budget. This requires constant communication with the individual project team members. By having regular internal discussions about the progress and design decisions of the individual task, it provides insight into status and some of the potential issues that could arise. This “hands-on” approach is crucial to maintaining the workload of the entire team so that it is managed, balanced, and reallocated as necessary.

CED also employs several time-tested tools to help manage the overall workload and the individual task schedules and budget. We will rely on regular progress meetings, both internally and with the Town, when necessary, to review each task teams’ progress. Mr. O’Krepky will maintain a database of all Town assignments so that he can monitor the milestone due dates as well as budgets both for the individual tasks as well as the overall program. These management practices have proven to identify issues with deadlines and budgets early in the process so that they can be addressed prior to causing issues. Whenever a perceived project delivery or management issue is identified, Mr. O’Krepky will immediately coordinate with the Town’s Project Manager to communicate our concern and work collaboratively to address before it affects the budget and/or schedule of projects.



Schedule

CED is committed to meeting all of the “project specific” time requirements for the agreed upon scope of services negotiated for each Assignment under this contract. The successful execution of this contract will be achieved by confirming

each assignment is organized, managed, and performed to meet the Town’s delivery schedules.

CED will use Microsoft Project to establish project schedules that clearly define project milestones and goals. This provides comprehensive reporting of the completion of critical path activities, such as target placement, data acquisition, control adjustments, data processing, QA/QC reviews, and final deliverables. Our Project Manager will schedule individual or group progress meetings, field reviews and/or office visits, as necessary, to meet established due dates and address questions or concerns promptly as they arise.

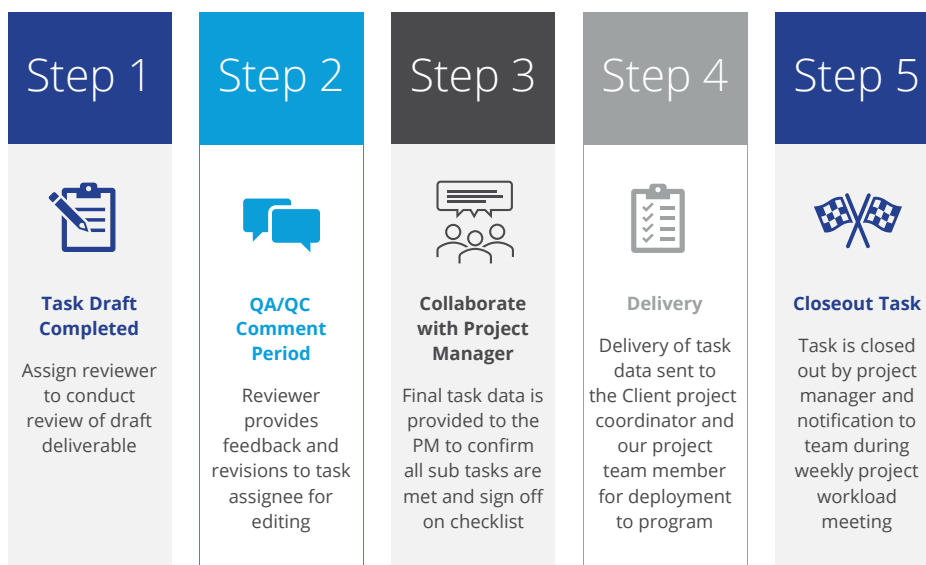
Upon receipt of each Assignment, we will schedule a face to face or virtual kickoff meeting with the Town to confirm/review all scope items, project schedule, staffing/resource plan, and any required stakeholder coordination. The project kickoff meeting agenda will define the schedule, including identifying all milestones. Once these milestones are identified, we will propose items in the schedule that can be advanced or prioritized. These items will be based on the needs of the in-house design team or EOR we are supporting to minimize critical timelines and relieve the burden on the Town.



Communication

Effective communication, coordination, and collaboration between our team partners, fellow contract holders and the Project Manager will be vital throughout this contract. This will be achieved through developing a clear understanding of the scope, defining roles and expectations, establishing clear communication protocols, open and clear collaboration and reporting, and transparency regarding both achievements and challenges.

Example Process



The agenda for the kick-off meeting for each assignment and subsequent weekly team meetings includes discussions regarding project goals, schedule, progress, and performance with input welcome from all the members of the project team. In this way, our team members are fully informed regarding project status and their individual responsibilities. If issues or challenges arise during a project, they are discussed with various team members, a plan of action is formulated, and instructions guiding the way forward are disseminated appropriately for implementation.

Mr. O’Krepky will closely communicate with the Town’s Project Manager for all assignments with status updates for all established milestones.



Coordination with Government Agencies

CED has a breadth and depth of experience obtaining approvals on behalf of our clients from various regulatory agencies including, but not limited to, South Florida Water Management District (SFWMD), Palm Beach County, Florida Department of Transportation (FDOT), Army Corps of Engineers, and Florida Department of Environmental Protection (FDEP).

Our approach is always tailored to the project, and typically includes a concept plan, kickoff meeting, and periodic updates to all stakeholders as necessary.

The focus of all our efforts always places the Town’s interests and goals at the forefront as we navigate external interests and requirements.



Cost Control - Design Budget

CED is committed to meeting all of the “project specific” budget requirements for the agreed upon scope of services negotiated for each Assignment under this contract. Budgets for each assignment will be tracked and maintained on a weekly basis using the project management portals included in BST Financial Software (Ver.10). This allows for monitoring of project financial details to quickly determine which activities are negatively impacting the schedule or budgets and, if required, institute aggressive corrective actions including adding resources to prevent cost overruns. Invoicing will be prepared monthly to coincide with milestone deliverables and will document the percent complete status for each assignment.



Cost Control - Construction Budget

CED works hard to align our clients’ construction budgets with final design products. We do this by developing an Opinion of Probable Construction Cost (OPCC) at each design milestone (e.g. 30%, 60%, 90% and 100%). Once

prepared, the OPCC is then compared to the client’s construction budget to confirm that the current design is within the budgetary constraints. As additional design milestones are reached, CED is able to more precisely define the OPCC and the value of any contingency can be reduced. Furthermore, we leverage our CEI group to assist our design engineers during the development of OPCCs. Their extensive field experience not only improves the constructability of our designs, but also increases the accuracy of the OPCCs we prepare.

Should the OPCC exceed the construction budget, we look for opportunities to reduce the estimate through modifications to the design, changes in equipment/material selection, or removal of non-essential elements. In some situations, a client has requested specific project elements resulting in the OPCC exceeding the construction budget. In all cases, we will communicate with your project manager any anticipated cost concerns, offer several solutions, and work to bring the project back under budget while retaining the project elements important to you.

Just as work on a project does not begin at the design phase, it does not end once construction documents are complete either. Our team is also capable of providing construction administration/construction management support should the need for such services arise. We have a total of seven fully CTQP qualified Florida construction managers and inspectors available who could serve this contract if the need arises. Their experience and knowledge of common pitfalls during construction, helps to contain costs.



Our diverse skillset, dedication to customer service, and understanding of the Town’s process, procedures and expectations provides you with the assurance our team will have practical cost saving solutions while delivering results.



Risk Mitigation and Conflict Resolution

CED understands that we live in an imperfect world and field conditions can differ from what is expected. Even when exercising the greatest amount of diligence, some uncertainties and conflicts are inevitable. As previously mentioned, CED is a multiple disciplinary firm and has experts available in every key field including design, utility coordination, permitting, and, equally importantly, construction management. CED’s in-house construction inspection and administration service team will be involved in each of our phase reviews. Their efforts will help us to identify and minimize areas of risk resulting in the reduction/elimination of the needs for RFI’s/change orders. In addition, Mr. O’Krepky brings a unique design, construction, and operational

experience which will further serve to identify and address areas of risk in advance of the construction phase. Below are the areas to specifically focus on:

- Clearly define the scope before initiation to remove potential scope creep
- Conduct reviews of the scope when starting a task, completing a task, and prior to project meetings
- Engage construction management staff in these reviews to reduce the need for RFIs/Change Orders

Conflict avoidance can be enhanced through instilling proactive procedures that help identify potential conflicts before they occur while promoting open communication and collaboration between the Town, design team, contractor, and other project stakeholders are a key element of conflict resolution. CED takes pride in their project managers' ability to foster open, and often necessarily candid, conversations to navigate project delivery challenges. Each project is unique, requiring a flexible and team-based approach both internally and externally. Identified challenges are communicated and discussed internally through both bottom up and top-down approaches ensuring that all parties are aware. This process encourages staff to provide experienced opinions from different perspectives coalescing into a solid avoidance or mitigation plan.

Not if, but when conflict occurs, Mr. O'Krepky will take the lead organizing communication between stakeholders affected by the conflict. Initial efforts will focus on understanding the conflict by collecting information from involved parties followed by developing potential solutions. A meeting will be scheduled with the Town to present this information, discuss resolution options, and find consensus.



Safety

Safety is a core value for CED, and we have adopted the Behavior Based Safety (BBS) model as an enhancement to our existing safety program to live a Safety Culture at work and home. We regularly inventory all personnel and vehicle safety equipment and mandate using daily Health & Safety Checklists forms signed by all crew members.

In addition, daily "tail gate" meetings are held on-site to assess, communicate, and eliminate, potential site-specific safety issues. However, if a member of the CED team determines that any activity on the job site poses an imminent hazard, they have stop work authorization until appropriate action is taken, and the deficiency is addressed. This commitment to safety also extends to our subconsultant partners.

We understand the magnified dangers inherent with working on roadways and MOT/ TTC Safety protocols will be rigorously followed to minimize risk potential

to both our workers and the traveling public. CED field crew members and production managers maintain Intermediate MOT certifications and utilize the MUTCD, the FDOT Standard Plans for MOT/TTC Index 102-100 through 102- 680.

Our staff certifications and training also include OSHA 10-hour, OSHA 30-hour, OSHA HazWOPER, confined space entry, coalition for construction safety (CCS), CSX & E-Rail Safe, and first aid/CPR training. Additionally, CED utilizes Operator Qualification (OQ) programs through Veriforce to provide safety training and OQ certification.



Understanding of Town & State Codes/ Regulations

A core requirement for providing General Engineering Consulting Services contract is an understanding of the codes and regulations governing projects. CED has provided design and survey services for FDOT and private projects within Palm Beach County and as such, we are familiar with Town ordinances and codes. For example, we have successfully completed multiple development projects and understand the unique design criteria and ordinances that the County requires. CED has provided EOR services for many municipalities and counties in the capacity of capital improvement project design. Incorporated within this capital improvement design process is typically the preparation of contract documents in some form or another. Some agencies have simply requested plans be prepared, while other agencies have required the EOR prepare the bid documents, quantity estimates, specifications and other supporting items. CED has participated in the bid leveling and contractor selection process as well. In order to assist or provide these services CED has become familiar with the agency's procurement process and regulations.

While providing design services to public and private clients, CED has gathered extensive knowledge regarding typical construction standards as well as those provided by regulatory agencies. Those relative to the Town may include the Palm Beach County Code, Palm Beach County Water Utilities Department (PBCWUD) specifications, Land development Code, Florida state statutes, FDOT design standards, AASHTO The Green Book, Public Works Department specifications, Federal Aviation Administration standards, South Florida Water Management District standards, to name a few.



Sustainability, Resiliency, and Durability

Many of CED's clients have embraced sustainability with design and operations of their buildings, facilities and infrastructure. As such, CED has many LEED accredited professionals with experience in providing design input in a team.

For example, the below are past project elements that align with sustainability:

- Design of infrastructure that will have a longer service life, thereby reducing the costs for maintenance.
- Design of solar fields or rooftop panels on public buildings along with other capital improvement projects that create jobs for manufacturing and installation.
- Design of EV charging stations, stormwater treatment measures, and even redevelopment of blighted properties with current landscape standards all provide air and water quality improvements.
- Design of infrastructure that is resilient to storm impacts such as elevating electrical devices above flood water elevations is a proactive approach.
- Design of solar fields or rooftop panels on public buildings also promotes energy stability.



QA/QC Management Program

Our QA/QC program is continually monitored to maximize its success and to identify possible improvements. **Each CED employee is a part of this QA/QC program, and it applies to all our disciplines and office locations.** The CED QA/QC Program manual is designed to help Project Managers implement practices for effective project management and incorporates department-specific guidelines as they are developed.

It is CED policy to establish, commit to, implement, and monitor a QA/QC plan for every project, ensuring quality deliverables for our clients. A detailed QA/QC plan encompassing all the disciplines included for this contract shall be developed to ensure deliverables are efficiently and accurately prepared. **CED takes full responsibility for the quality of our project submittals, including components prepared by our subconsultants.**

Quality Assurance CED understands the Town’s concerns regarding the importance of quality products and agrees that deliverables include complete and well documented data supporting the associated reports and digital files. We accomplish this by educating, training, and mentoring our personnel. Each member of the CED production staff receives a SOP that details

our procedures and workflow from field to finish. QA is supported daily by the Project Manager, Task Lead or QC Manager assigned to the specific assignment who will oversee and monitor the process and results with field and office staff to ensure we are collecting the requested data using the agreed upon methods.

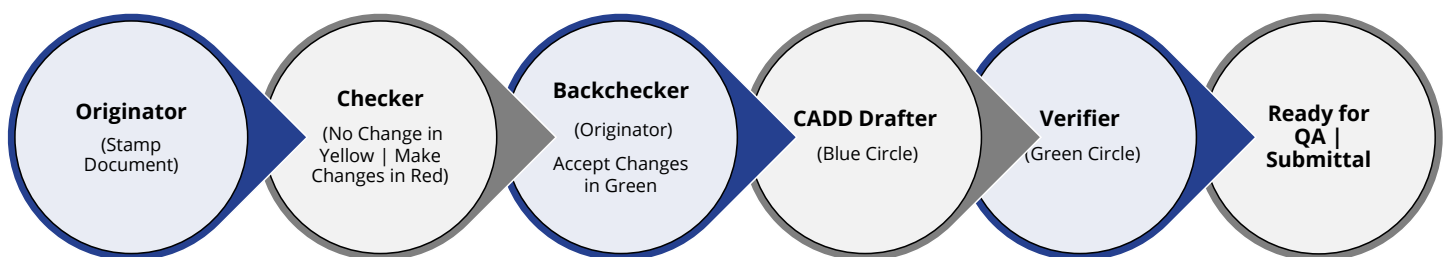
Quality Control Process (QCP): Quality is accomplished through standardized field and office workflows and a series of systematic reviews throughout each assignment and documenting production process. Our workflows include standardized field procedures and best practices for utility investigation and survey measurements which significantly reduce the chance for error; equipment calibration performed on a routine basis to verify proper and reliable operation of the survey and SUE equipment, and thorough training and certification of our staff. All field sketches, photos, raw data, test hole reports, and survey notes are cross referenced to confirm consistency. Data quality issues anywhere in the process will be investigated and resolved prior to finalizing the deliverable product.

To achieve the highest possible quality, deliverables for each assignment will be reviewed by a qualified independent reviewer from the appropriate technical discipline. Our QCP for all submittals is redundant in nature, having a minimum of two reviewers for every assignment. As depicted in the diagram below, each reviewer follows a strict order of process which involves thorough back-checking of all documentation. The reviewer’s comments will be coded in **RED**, plans will be updated per the comments and noted in **GREEN**, and the back checker will verify the changes are made with **BLUE** ink. The final step of the process is a QA review by senior project management to ensure the QCP process was followed.

No. _____	Date: _____
CHECK PRINT	
Dwg. Checked against calcs. And calc. check confirmed	
By: _____	Date: _____

Checked By: _____ Date: _____
 Backchecked By: _____ Date: _____
 Corrected By: _____ Date: _____
 Verified By: _____ Date: _____

Final deliverable formatting will be consistent and prepared in accordance with the Town requirements. A workplan will be developed containing a checklist of items specific to the project. Submittals will be made only after our staff ensures that each deliverable meets the required standards and specifications.



Tab 5

Resources, Availability, and Commitment



Engineering
& Design

Current and Projected Workload

Our leadership team in the Boca Raton office manages weekly utilization meetings with all key staff for the purpose of evaluating daily workload projections for the week ahead.



Following this meeting is a Southeast based operations meeting discussing the same item and uses this as a gauge for filling gaps where staff is needed. Having these weekly operations meetings provides project managers the ability to forecast project completion dates and allowing them to rely on this information to keep projects on schedule. CED's location and labor management structure and processes allow our firm to provide the Town with a highest level of attentiveness, responsiveness, availability, and flexibility to successfully complete all tasks.

Our Boca Raton office is located at: 7284 W Palmetto Park Rd, Ste. 201-S, Boca Raton, FL, 33433

We are also pleased to have outstanding subconsultant partners, that we have strong relationships with, committed to our team to ensure we have the resources necessary for timely responses and the completion of successful, high quality products.

At present, our team in Boca Raton and our subconsultants have the capability and availability with current workload/backlog to provide a significant amount of their time to the Town under this contract and projections for the date of the notice to proceed for this contract. The percentage of availability is closer to 75% on average when projected out a year as requested in the RFP. As each month progresses, the trend of the percentage of availability continues to increase.

CED's management staff carefully allocates the firm's resources to address the constantly shifting market demand for projects. We promote a management philosophy that supports cross-training our staff to prepare them to be available on short notice and to be qualified to support the variety of disciplines which have the potential to be included in Town requested projects. This enables CED to maintain optimum utilization of highly trained individuals who provide resources for "Fast-Track" project completion. This approach has enabled us to maintain a steady stream of projects, while enabling us to allocate adequate resources to immediately respond to new task order assignments from the Town.

With over 160 employees in Florida, CED pledges to the Town that project assignments will receive appropriate resources to fulfill schedule and budget requirements. Our team has the experienced depth and quality of staff to address all assignments associated with this contract. CED is dedicated to addressing the needs of our clients in a manner that is responsive, budget-conscious, focused, and technically sound. Careful Project management will allow current staff and company workloads to be adjusted within established schedules for each assignment. **Our commitment, together with the additional support available throughout the CED network of offices assures the Town of a responsive project team.**

Financial Capacity: CED is in a financially healthy position and maintains financial stability, as evidenced by our strong Financial Strength and low Risk Rating of 5A2 with Dun & Bradstreet and other credit reporting agencies.



Availability, Location, and Workload Chart

CED's Project Manager and primary key staff will oversee the elements of the work as identified in our organizational chart and further demonstrated below:

Discipline Leader Team Availability		
Key Team Member Office Location	Firm	Availability
Michael O'Krepky, PE, CME Boca Raton, FL	CED	75%
John Arrieta, PE, PTOE Boca Raton, FL	CED	50%
Ian Dixon, LEED AP, WELL-AP Tampa, FL	CED	60%
Micheline Diegan, RA, AIA Jacksonville, FL	CED	60%
Pavel Drachev, PE Boca Raton, FL	CED	60%
Mark Drummond, PE, BCEE Delray Beach, FL	C Solutions	60%
Felipe Martinez, PE Delray Beach, FL	C Solutions	60%
Jennifer Prettel, PE, PMP Delray Beach, FL	C Solutions	70%
George Gentile, PLA, FASLA Jupiter, FL	2GHO	50%
Emily O'Mahoney, PLA, FASLA Jupiter, FL	2GHO	50%

Projects	Number of Personnel Assigned	Technology Utilized	CED				C Solutions			2GHO	
			Michael O’Krepky, PE, CME	John Arrieta, PE, PTOE	Pavel Drachev, PE	Ian Dixon, LEED AP, WELL-AP	Micheline Diegan, RA, AIA	Mark Drummond, PE, BCEE	Felipe Martinez, PE	Jennifer Prettel, PE, PMP	George Gentile, PLA, FASLA
PM & QAQC Manager City of Miami Parks and Rec Dept, FL	4	Autodesk, MS Office Suite	✓		✓						
PM & QAQC Manager City of Holmes Beach, FL	4	Autodesk, MS Office Suite	✓		✓						
PM & QAQC Manager City of Bradenton Beach, FL	4	Autodesk, MS Office Suite	✓								
Planning Board Engineer - Borough of Englewood Cliffs, NJ	4	Video Conferencing, MS Office Suite	✓								
FDOT District 1 Projects	8	Microstation, MS Office Suite		✓							
FDOT District 4 Projects	8	Microstation, MS Office Suite		✓							
FDOT District 6 Projects	8	Microstation, MS Office Suite		✓							
City of Parkland, FL	8	Microstation, MS Office Suite		✓							
SRQ Airport, FL	8	Microstation, MS Office Suite			✓						
RSW Airport, FL	8	Microstation, MS Office Suite			✓						
Fast Food Restaurant Chain, FL	4	Autodesk, MS Office Suite				✓	✓				
Wholesale Retail Stores, FL	4	Autodesk, MS Office Suite				✓	✓				
Miami Dade Small Pump Stations Project	4	Autodesk, Hydraulic Modeling & Pump Applications, MS Office Suite						✓	✓	✓	
PBC Water Treatment and Water Resources General	4	Autodesk, Hydraulic Modeling & Pump Applications, MS Office Suite						✓	✓	✓	
PBC General Utility	4	Autodesk, Hydraulic Modeling & Pump Applications, MS Office Suite						✓	✓	✓	
Architectural and Value Engineering Services	4	Autodesk, Hydraulic Modeling & Pump Applications, MS Office Suite						✓	✓	✓	
PBC Pressure Pipelines	4	Autodesk, Hydraulic Modeling & Pump Applications, MS Office Suite						✓	✓	✓	
PBC Pump Station Rehabilitation	4	Autodesk, Hydraulic Modeling & Pump Applications, MS Office Suite						✓	✓	✓	
PBC Optimization and Improvements Design Build	4	Autodesk, Hydraulic Modeling & Pump Applications, MS Office Suite						✓	✓	✓	
Palm Beach County Planning	4	Autodesk, MS Office Suite									✓
Jacobs Investments	4	Autodesk, MS Office Suite									✓
Catalfumo Development	4	Autodesk, MS Office Suite									✓
DiVosta Development	4	Autodesk, MS Office Suite									✓
Modica Development	4	Autodesk, MS Office Suite									✓
Village of North Palm Beach	4	Autodesk, MS Office Suite									✓
CDM Smith	4	Autodesk, MS Office Suite									✓
Town of Jupiter	4	Autodesk, MS Office Suite									✓



Tab 6

References



Project Details

Client:

City of Holmes Beach
5801 Marina Drive Holmes
Beach, FL 34217

Contact:

Sage Kamiya, PE, City Engineer
P: 941.708.5800 Ext. 245
E: skamiya@holmesbeachfl.
org

Completion:

2022- Ongoing

Design Cost:

\$75,000+ (TWO based)

Services | Relevancy:

General Municipal Services,
Grant Management,
Geotechnical Engineering,
CEI, Construction Materials
Testing (CMT), In-house
Laboratory, Planning and
Permitting Services

Independent Contractor Engineering Services, **City of Holmes Beach, FL**

Task work order (TWO) based City of Holmes Beach miscellaneous services contract. We have held this contract since 2022 and are qualified to support the city for any miscellaneous professional engineering & surveying services. Multiple assignments have supported the city's with structural boardwalk improvements, Resilient FL grant application development, planning, permitting support, bidding support, CEI and construction administration. An example of several specific task orders included the following.

The Grassy Point Habitat Restoration Boardwalk project included the design and permitting for an extension to the Grassy Point boardwalk and observation deck. Services provided included coordination with permitting agencies, managing a subconsultant to perform a benthic survey to determine the presence of sea grasses and hard bottom resources, structural design for the new boardwalk sections, construction document development, permitting with SWFWMD and FDEP, and development of the Invitation to Bid (ITB).

The City Center CEI project included providing CEI and construction administration services for a new drainage system and roadway improvements. Services were provided during preconstruction, construction, and post-construction and included monitoring deliverables, preparation for field operations, project control, inspection, progress reports, cost control, and change orders. We will provide substantial and final completion services and final project records when the project is complete.

The Resilient FL Grant Application project involved preparation of a grant application on behalf of the city to perform a vulnerability assessment. Services provided included preparing and submitting the application/forms and coordinating with the city and relevant agencies. The grant application was approved.



Project Details

Client:

Borough of Englewood Cliffs
482 Hudson Terrace
Englewood Cliffs, NJ 07632

Contact:

Russ Porrino, Planning Board
President
P: 201.569.4356 Ext. 442
Mobile: 201.741.7937
E: rporrinopb@
englewoodcliffsnj.org

Service:

2015 - Ongoing

Services | Relevancy:

Site Plan Review,
Construction Overview,
General Planning Service,
Traffic Analysis

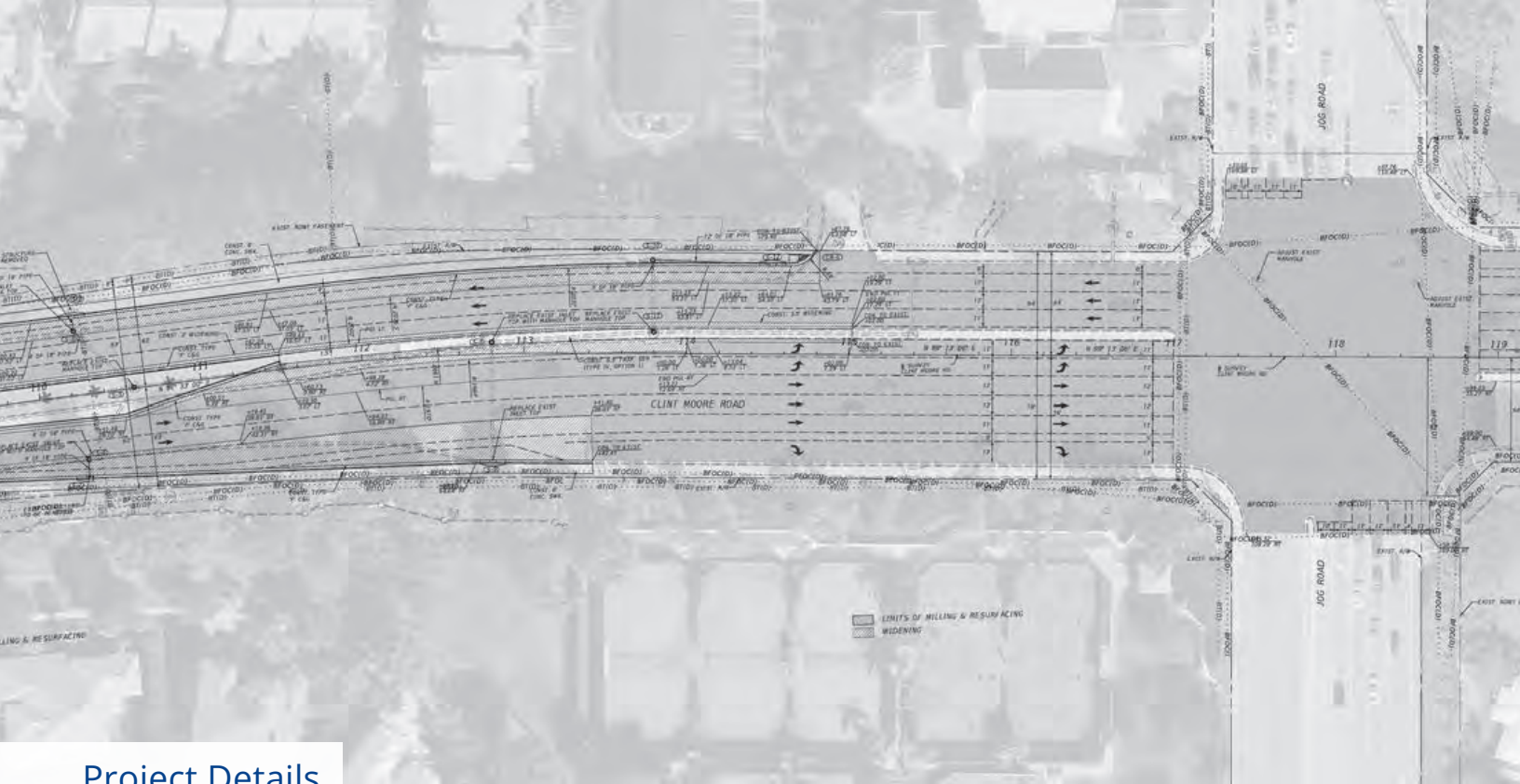
Englewood Cliffs Planning Board Engineer and Planner, Englewood Cliffs, Bergen County, NJ

As Englewood Cliffs Borough's appointed Planning Board Engineer since 2015, Colliers Engineering & Design was responsible for reviewing various residential, commercial, and redevelopment projects, as well as assisting in the process of reviewing and updating the community's master plan, a comprehensive, long-range plan intended to guide the growth and development of the Borough. This document contains elements that provide for future development, housing, recreation, open space, transportation, community facilities and land use.

Additional duties involved subdivision and site plan review; reviewing the official map and associated zoning ordinances; conducting studies of areas suitable for redevelopment; reviewing the capital improvements program; and review of other state or federal programs or plans. Our professionals also assembled data for planning purposes and performed other advisory duties as requested by the Borough Council and Land Use Board to aid them in the planning process. To accommodate the public regarding Covid-19, the Borough of Englewood Cliffs Planning Board held online meetings starting in 2020. Select Experience:

LG Electronics: As a part of a development plan for the site commonly known as 111 Sylvan Avenue, LG Electronics applied to the Borough for a Subdivision Plan. The 27.016-acre lot with frontage along Sylvan Avenue, Hudson Terrace, and Van Nostrand Ave and is located within Borough's B-2 (Limited Business) zone district. Special considerations had to be evaluated regarding this development and its proximity to the Palisades Interstate Park.

Englewood Cliffs Toyota: As a part of a development plan for the site commonly known as 50 Sylvan Avenue, the owner of Englewood Cliffs Toyota applied to the Borough for a site plan. The project is located in the B-2 Limited Business Zone and is located between Van Nostrand Avenue and Middlesex Avenue. The site plan modifications included but not limited to, milling and paving, drainage, building additions, striping & signage, DOT access, circulation and parking plan, traffic striping & signage, recycled water & sewer, brand signs, and lighting. Special considerations were accounted for regarding this development for construction and operation, as it fronted on a State Highway.



Project Details

Client:

Palm Beach County
2300 N. Jog Road
West Palm Beach, FL 33411

Contact:

Maroun Azzi, PE
P: 561.684.4150
E:MAzzi@pbc.org

Completion:

2019-2023

Construction Cost:

\$100k+ (TO Based)

Services | Relevancy:

General Municipal Services (Civil Engineering), Drainage Design, Inspections, Permitting, Planning, Construction Cost Estimates

PBC Intersection Improvements Annual Services Contract, **Palm Beach County, FL**

Scope consists of providing engineering services for intersection improvements, including but not limited to traffic signals, drainage improvements, turn lanes, bike lanes, sidewalks. CED's design group has provided the safest and most cost-effective solutions for PBC's infrastructure needs. CED's has 13 Work Task Orders (WTO) issued to date, with two intersections nearing construction completion, two others awaiting contractor bids, two more pending the Final Submittal, and all other assignments are well underway in the design submittal process. Sample projects include:

- Clint Moore Road and Jog Road. Project reconfigures existing lane assignments on the east to add a WB through lane, widens existing pavement to provide additional WB through lane on the west side of the intersection, and extends the EB to NB left lane. The project also consists of milling and resurfacing, signing and pavement markings and drainage improvements.
- Hypoluxo Road & Jog Road. The project reconfigures existing lane assignments, extends the third WB through lane across the intersection, and replaces the existing span wire mounted traffic signal with a new mast arm mounted system.
- The project also consists of milling and resurfacing, signing and pavement markings, drainage improvements and utility coordination.
- Palmetto Park Road and Lyons Road. This project consists of adding a third through lane in both the NB and SB direction through the intersection, extending left turn lanes and signalization upgrades. The conceptual design includes preparing preliminary roll plot plans, typical sections and preliminary cost estimate.
- Linton Blvd and Jog Road. This project consists of extending the WB dual left turn lanes by pavement widening and milling and resurfacing. The work also includes signing and pavement markings and signal loop replacement.



Tab 7

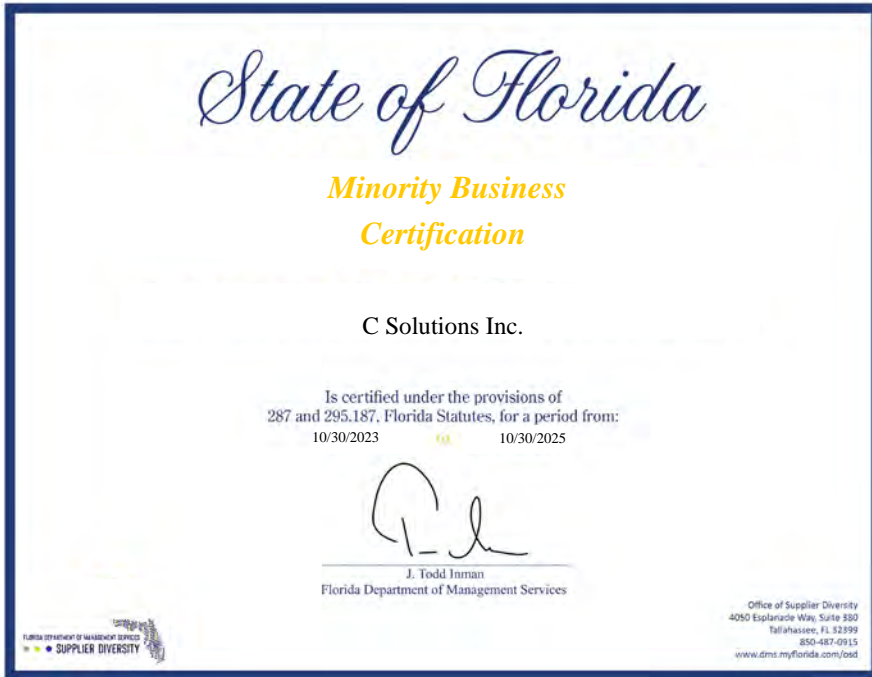
Certified Minority Business Enterprise

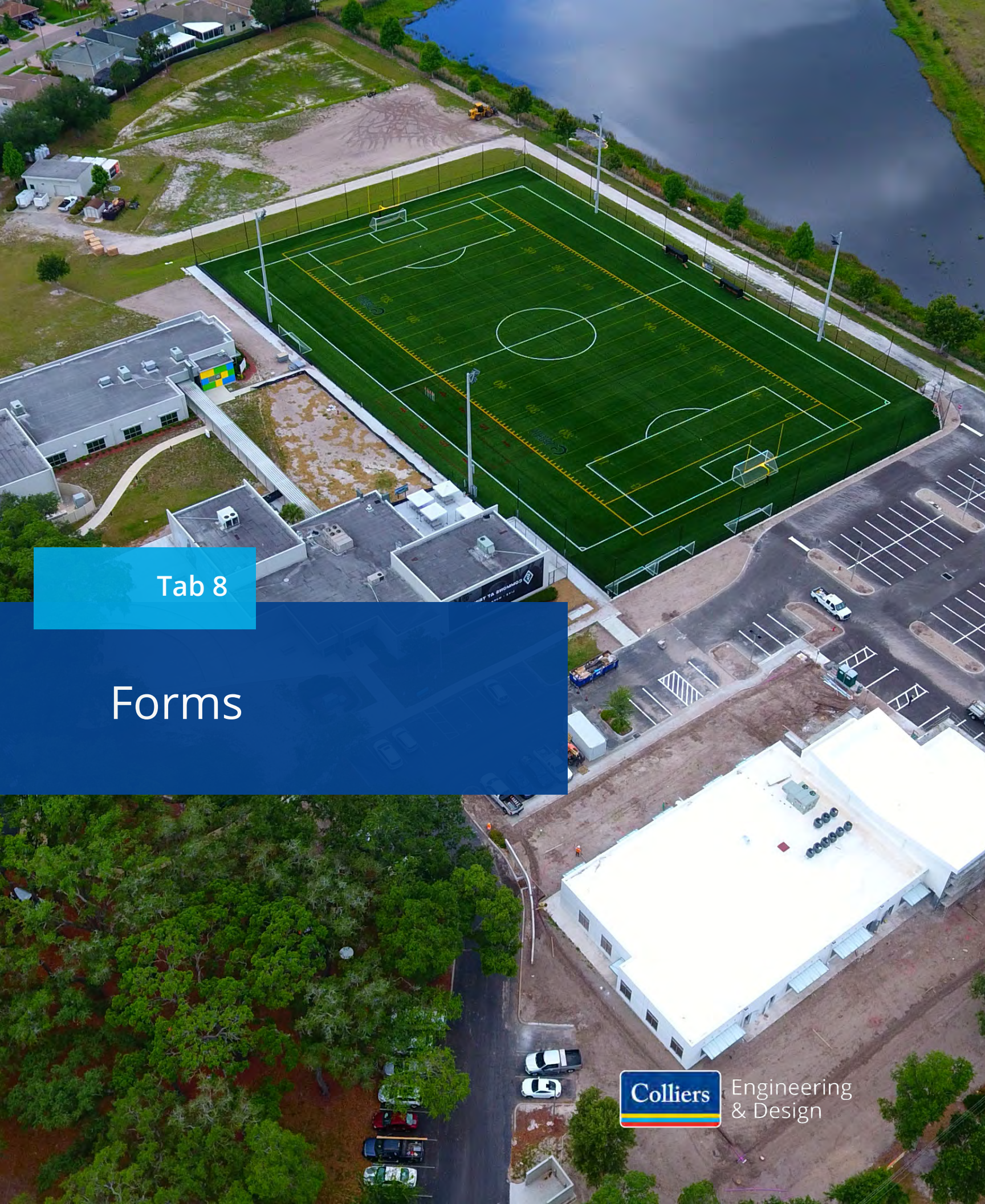


Engineering
& Design

This section is N/A for CED.

However, we strive to continue to work with our current minority/small business firms to support their growth. For example, we have included C Solutions as a key member of our team. They are a minority owned and certified local small Business Enterprise by the State of Florida.





Tab 8

Forms



Engineering & Design

FIRM ACKNOWLEDGEMENT

Submit RFQ's to: Town Clerk's Office
Town of Highland Beach
3614 South Ocean Blvd.
Highland Beach, FL 33487
Telephone: 561-278-4548

RFQ Title: "CONTINUING PROFESSIONAL CONSULTING SERVICES (CCNA)"
RFQ Number: 24-001

RFQ Due: January 10, 2024, NO LATER THAN 2:00 P.M. (LOCAL TIME)

Proposals will be publicly opened and recorded for acknowledgement of receipt, unless specified otherwise, on the date and time indicated above and may not be withdrawn within ninety (90) days after such date and time.

All Contracts entered as a result of this RFQ shall conform to applicable sections of the Town Charter and Town Code of Ordinances.

Name of Firm: Colliers Engineering & Design

Federal I.D. Number: 22-2651610

A Corporation of the State of Florida

Telephone No.: 877.627.3772

Mailing Address: 7284 W Palmetto Park, Rd, Ste 201-S

City / State / Zip: Boca Raton, FL 33433

Email Address: luis.costa@collierseng.com



Authorized Signature
Principal Associate

SERVICES TO BE CONSIDERED - PLEASE CHECK OFF EACH TO BE PROVIDED

 x Civil Engineering

 x Water/Wastewater/Stormwater

 x Architecture

 x Landscape Architecture

 x Geotechnical

 x Transportation

 x Mechanical/Electrical/Plumbing

 x Other Services (Please list below)

Engineering Peer Plan Review, Right of Way Engineering, Traffic Engineering,

Electrical Engineering, Construction Engineering Inspection (CEI), Construction Management,

Geographic Information Systems (GIS), Grant Assistance & Management, Structural Engineering,

Utility Coordination & Design, SUE Services, Environmental Permitting and Engineering

CONFIRMATION OF DRUG-FREE WORKPLACE

Preference shall be given to businesses with drug-free workplace programs. In order to be considered having a drug-free workplace program, the Firm shall:

- 1) Publish a statement notifying employees that the unlawful manufacture, distribution, dispensing, possession, or use of a controlled substance is prohibited in the workplace and specifying the actions that will be taken against employees for violations of such prohibition.
- 2) Inform employees about the dangers of drug abuse in the workplace, the business's policy of maintaining a drug-free workplace, any available drug counseling, rehabilitation, and employee assistance programs, and the penalties that may be imposed upon employees for drug abuse violations.
- 3) Give each employee engaged in providing the commodities or contractual services that are under bid a copy of the statement specified in subsection (1).
- 4) In the statement specified in subsection (1), notify the employee that, as a condition of working on the commodities or contractual services that are under bid, the employee will abide by the terms of the statement and will notify the employer of any conviction of, or plea of guilty or nolo contendere to, any violation of Chapter 893 or of any controlled substance law of the United States or any state, for a violation occurring in the workplace no later than five (5) days after such conviction.
- 5) Impose a sanction on or require the satisfactory participation in a drug abuse assistance or rehabilitation program if such is available in the employee's community by, any employee who is so convicted.
- 6) Make a good faith effort to continue to maintain a drug-free workplace through implementation of this section.

As the person authorized to sign the statement, I certify that this Firm complies fully with the above requirements.



Authorized Signature
Principal Associate

PALM BEACH COUNTY INSPECTOR GENERAL

ACKNOWLEDGMENT

The Firm is aware that the Inspector General of Palm Beach County has the authority to investigate and audit matters relating to the negotiation and performance of this contract, and in furtherance thereof may demand and obtain records and testimony from the Firm and its subcontractors and lower tier subcontractors.

The Firm understands and agrees that in addition to all other remedies and consequences provided by law, the failure of the Firm or its subcontractors or lower tier subcontractors to fully cooperate with the Inspector General when requested may be deemed by the Town to be a material breach of this contract justifying its termination.

Colliers Engineering & Design

FIRM NAME

By: 
Luis Costa, PE

Title: Principal Associate

Date: 1/10/2024

**CERTIFICATION PURSUANT TO FLORIDA
SECTION 287.135, FLORIDA STATUTES**

I, Luis Costa, PE, Principal Associate in behalf of Colliers Engineering & Design certify
Print Name and Title Company Name

That Colliers Engineering & Design does not:
Company Name

1. Participate in a boycott of Israel; and
2. Is not on the Scrutinized Companies that Boycott Israel List; and
3. Is not on the Scrutinized Companies with Activities in Sudan List; and
4. Is not on the Scrutinized Companies with Activities in the Iran Petroleum Energy Sector List; and
5. Has not engaged in business operations in Syria.

Submitting a false certification shall be deemed a material breach of contract. The Town shall provide notice, in writing, to the Contractor of the Town's determination concerning the false certification. The Contractor shall have ninety (90) days following receipt of the notice to respond in writing and demonstrate that the determination of false certification was made in error. If the Contractor does not demonstrate that the Town's determination of false, certification was made in error then the Town shall have the right to terminate the contract and seek civil remedies pursuant to Florida Statute § 287.135.

Section 287.135, Florida Statutes, prohibits the Town from: 1) Contracting with companies for goods or services in any amount if at the time of bidding on, submitting a proposal for, or entering into or renewing a contract if the company is on the Scrutinized Companies that Boycott Israel List, created pursuant to Section 215.4725, F.S. or is engaged in a boycott of Israel; and

2) Contracting with companies, for goods or services over \$1,000,000.00 that are on either the Scrutinized Companies with activities in the Iran Petroleum Energy Sector list, created pursuant to s. 215.473, or are engaged in business operations in Syria.

As the person authorized to sign on behalf of the Contractor, I hereby certify that the company identified above in the section entitled "Contractor Name" does not participate in any boycott of Israel, is not listed on the Scrutinized Companies that Boycott Israel List, is not listed on either the Scrutinized Companies with activities in the Iran Petroleum Energy Sector List and is not engaged in business operations in Syria. I understand that pursuant to section 287.135, Florida Statutes, the submission of a false certification may subject the company to civil penalties, attorney's fees, and/or costs. I further understand that any contract with the Town for goods or services may be terminated at the option of the Town if the company is found to have submitted a false certification or has been placed on the Scrutinized Companies with Activities in Sudan list or the Scrutinized Companies with Activities in the Iran Petroleum Energy Sector List.

Colliers Engineering & Design
COMPANY NAME


SIGNATURE

Luis Costa, PE
PRINT NAME

Principal Associate
TITLE

**SWORN STATEMENT PURSUANT TO SECTION 287.133(3)(A), FLORIDA
STATUTES, ON PUBLIC ENTITY CRIMES**

THIS FORM MUST BE SIGNED AND SWORN TO IN THE PRESENCE OF A NOTARY PUBLIC OR OTHER OFFICIAL AUTHORIZED TO ADMINISTER OATHS.

1. This sworn statement is submitted to the Town of Highland Beach (the "Town") by:
Luis Costa, PE, Principal Associate

(Print individual's name and title)

For: Colliers Engineering & Design

(Print name of entity submitting sworn statement)

Whose business address is:

7284 W Palmetto Park, Rd, Ste 201-S

And (if applicable) its Federal Employer Identification Number (FEIN) is: 22-2651610

(If the entity has no FEIN, include the Social Security Number of the individual signing this sworn statement:
_____)

2. I understand that a "public entity crime" as defined in Paragraph 287.133(1)(g), FLORIDA STATUTES, means a violation of any state or federal law by a person with respect to and directly related to the transaction of business with any public entity or with an agency or political subdivision of any other state or of the United States, including, but not limited to, any bid or contract for goods or services to be provided to any public entity or an agency or political subdivision of any other state or of the United States and involving antitrust, fraud, theft, bribery, collusion, racketeering, conspiracy, or material misrepresentation.

3. I understand that "convicted" or "conviction" as defined in Paragraph 287.133(1)(b), FLORIDA STATUTES, means a finding of guilt, in any federal or state trial court of record relating to charges brought by indictment or information after July 1, 1989, as a result of a jury verdict, non-jury trial, or entry of a plea of guilty or nolo contendere.

4. I understand that an "affiliate" as defined in Paragraph 287.133(1)(a), FLORIDA STATUTES, means:

- a. A predecessor or successor of a person convicted of a public entity crime; or
- b. an entity under the control of any natural person who is active in the management of the entity and who has been convicted of a public entity crime. The term "affiliate" includes those officers, directors, executives, partners, shareholders, employees, members, and agents who are active in the management of an affiliate. The ownership by one (1) person of shares constituting a controlling interest in another person, or a pooling of equipment or income among persons when not for fair market value under an arm's length agreement, shall be a prima facie case that one (1) person controls another person.

A person who knowingly enters a joint venture with a person who has been convicted of a public entity crime in Florida during the preceding thirty-six (36) months shall be considered an affiliate.

5. I understand that a "person" as defined in Paragraph 287.133(1)(e), FLORIDA STATUTES, means any natural person or entity organized under the laws of any state of the United States with the legal power to enter into a binding contract and which bids or applies to bid on contracts for the provision of goods or services let by a public entity or which otherwise transacts or applies to transact business with a public entity. The term "person" includes those officers, directors, executives, partners, shareholders, employees, members, and agents who are active in management of an entity.

6. Based on information and belief, the statement, which I have marked below, is true in relation to the entity submitting this sworn statement (indicate which statement applies).

X Neither the entity submitting this sworn statement, nor any of its officers, directors, executives, partners, shareholders, employees, members, or agents who are active in the management of the entity, nor any affiliate of the entity has been charged with and convicted of a public entity crime subsequent to July 1, 1989.

_____ The entity submitting this sworn statement, or one or more of its officers, directors, executives, partners, shareholders, employees, members, or agents who are active in the management of the entity or an affiliate of the entity has been charged with and convicted of a public entity crime subsequent to July 1, 1989.

_____ The entity submitting this sworn statement, or one (1) or more of its officers, directors, executives, partners, shareholders, employees, members, or agents who are active in the management of the entity, or an affiliate of the entity has been charged with and convicted of a public entity crime subsequent to July 1, 1989. However, there has been a subsequent proceeding before a Hearing Officer of the State of Florida, Division of Administrative Hearings and the Final Order entered by the Hearing Officer determined that it was not in the public interest to place the entity submitting this sworn statement on the convicted Bidder list. (Attach a copy of the final order)

I UNDERSTAND THAT THE SUBMISSION OF THIS FORM TO THE CONTRACTING OFFICE FOR THE PUBLIC ENTITY IDENTIFIED IN PARAGRAPH 1 ABOVE IS FOR THAT PUBLIC ENTITY ONLY AND, THAT THIS FORM IS VALID THROUGH DECEMBER 31 OF THE CALENDAR YEAR IN WHICH IT IS FILED. I ALSO UNDERSTAND THAT I AM REQUIRED TO INFORM THE PUBLIC ENTITY PRIOR TO ENTERING INTO A CONTRACT IN EXCESS OF THE THRESHOLD AMOUNT PROVIDED IN SECTION 287.017, FLORIDA STATUTES, FOR CATEGORY TWO OF ANY CHANGE IN THE INFORMATION CONTAINED IN THIS FORM.

Date: 1/10/2024
5TH pc

[Signature]
Signature

STATE OF FLORIDA

COUNTY OF Palm Beach County

The foregoing instrument was acknowledged before me this 10 day of January, 2024, by, Luis Costa as Principal Associate (title) of Colliers Engineering & Design (name of company), on behalf of Colliers Engineering & Design, Inc. (type of entity).

✓ who is personally known to me, ✓ who produced FL Driver License as identification, who did take an oath, and who acknowledged before me that he executed the same freely and voluntarily for the purposes therein expressed, in physical presence.

[Signature]
Signature

Luis Costa, PE Ethan C. Lawrence
Print Name



NOTARY PUBLIC - STATE OF FL
My Commission Expires: 09/06/2027
Commission No.: HH 440890

ADDENDA ACKNOWLEDGEMENT

TOWN OF HIGHLAND BEACH, FLORIDA

RFQ TITLE: **“CONTINUING PROFESSIONAL CONSULTING SERVICES (CCNA)”**

RFQ NO.: 24-001

DATE SUBMITTED: 1/10/2024

We propose and agree, if this submittal is accepted, to contract with the Town of Highland Beach, in the Contract Form, to furnish all material, means of transportation, coordination, labor and services necessary to complete/provide the work specified by the Contract documents.

Having studied the documents prepared by: The Town of Highland Beach

We propose to perform the work of this Project according to the Contract Documents and the following addenda which we have received:

ADDENDUM	DATE	ADDENDUM	DATE
_____	_____	_____	_____
_____	_____	_____	_____
_____	_____	_____	_____

X NO ADDENDUM WAS RECEIVED IN CONNECTION WITH THIS RFQ

REFERENCES FOR Colliers Engineering & Design

(NAME OF FIRM)

1. Reference/Contact Name:

City of Holmes Beach, 5801 Marina Drive, Holmes Beach, FL 34217

Mr. Sage Kamiya, PE, PTOE, Superintendent of Public Works / City Engineer

Professional Services Performed:

Various Task Work Orders for General Engineering Contract

Phone: 941-708-5800 ext. 245

Fax: 941-708-5812

E-Mail: skamiya@holmesbeachfl.com

2. Reference/Contact Name:

Borough of Englewood Cliffs, 482 Hudson Terrace, Englewood Cliffs, NJ 07632

Russ Porrino, Planning Board President

Professional Services Performed:

Appointed Planning Board Engineer & Planner

Phone:

Fax: 201-569-4356

E-Mail:

Office: 201-569-4356 ext. 442

rporrinopb@englewoodcliffsnj.org

Mobile: 201-741-7937

3. Reference/Contact Name:

Palm Beach County, 2300 N. Jog Road, West Palm Beach, FL 33411

Maroun Azzi, PE,

Professional Services Performed:

PBC Intersection Improvements Annual Services Contract

Phone: 561-684-4150

Fax: 561-233-1768

E-Mail: MAzzi@pbcgov.org



Engineering & Design

Colliers Engineering & Design is a trusted provider of multi-discipline engineering, design and consulting services providing customized solutions for public and private clients through a network of offices nationwide.

For a full listing of our office locations, please visit colliersengineering.com

1 877 627 372

*Civil/Site • Architecture • Traffic/Transportation • Governmental • Survey/Geospatial
Infrastructure • Geotechnical/Environmental • Telecommunications • Utilities/Energy*

Accelerating success.