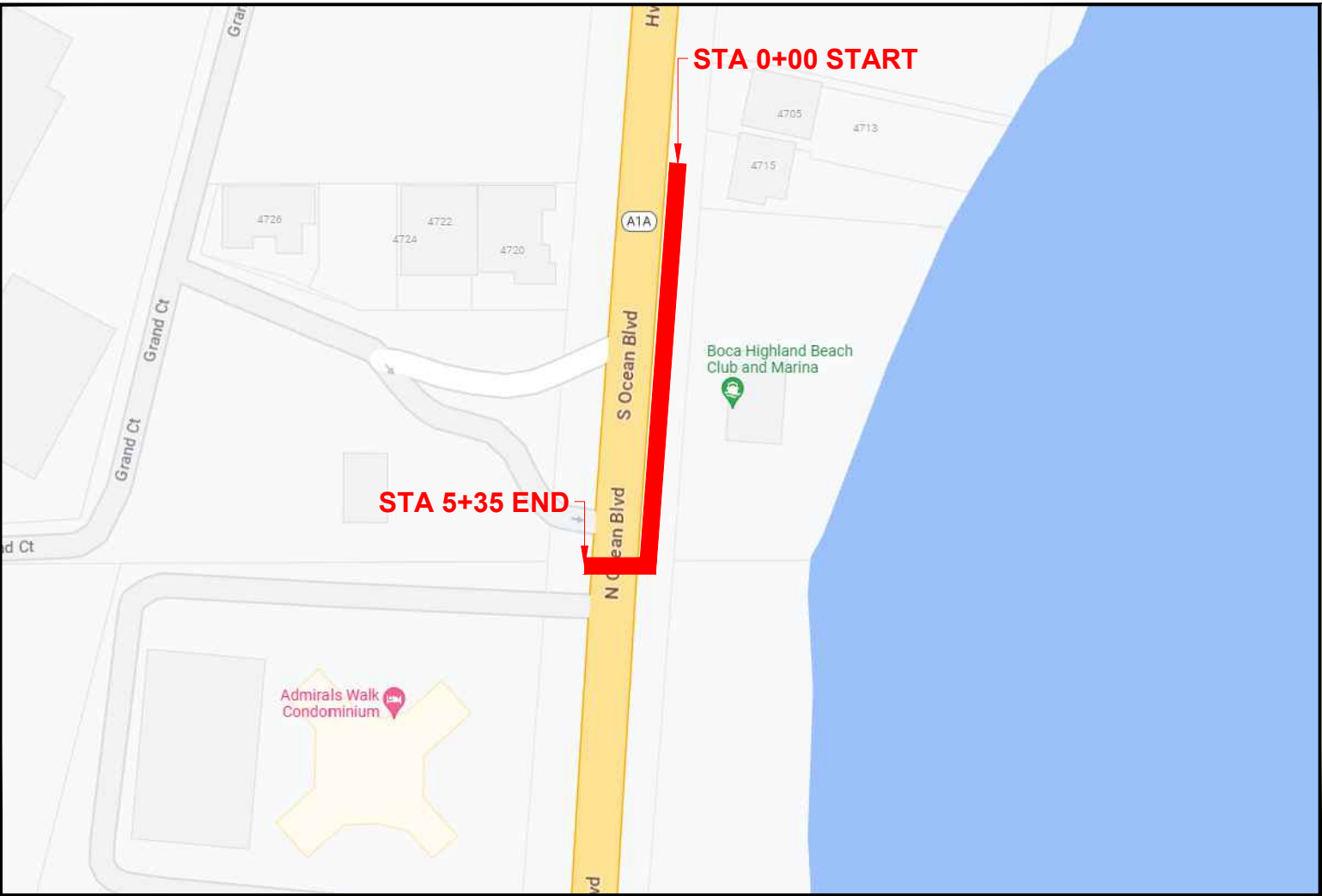


PROJECT: KMV-BS-23-102 - BOCA HIGHLANDS - OSP
ADDRESS: 4801 S OCEAN BLVD, HIGHLAND BEACH, FL 33487 -
CITY OF HIGHLAND BEACH PERMIT

LINETYPES	
	UG FIBER - EXISTING
	UG FIBER - PROPOSED
	AERIAL FIBER - EXISTING
	AERIAL FIBER - PROPOSED
	STRAND - EXISTING
	STRAND - PROPOSED
	CONDUIT - EXISTING
	CONDUIT - PROPOSED
	INNERDUCT - EXISTING
	INNERDUCT - PROPOSED
	GAS
	TRF
	WATER
	TELEPHONE
	ELECTRIC
	STREET LIGHT
	FOC
	FM
	SEW
	SD
	RW
	FENCE
	TV
	STM
	OIL
	UNK
	R/W
	EASEMENT



SITE LOCATION

SUMMARY DATA	
JOB DESCRIPTION	FTG
DIRECTIONAL BORE	535'
HANDHOLE	3

PERMITTING
JURISDICTION:
* CITY OF HIGHLAND BEACH

DATE SUBMITTED
08/01/23

TWP : 47S	RNG : 43E	SEC : 9
PLAT BOOK : -	PAGE : -	



CONTACTS

BLUE STREAM
JONATHAN LARA
DESIGN ENGINEER
PHONE: 954-753-0100
JLARA@BLUESTREAMFIBER.COM

EXPERT DRILL LLC
MARIO SAGASTUME
CONTRACTOR
PHONE: 703-929-2256
MARIO.S@EXPERTDRILLFL.COM

KMV FIBERTELECOM INC
SANDRA KARINA VARGAS
10604 NW 48TH ST
CORAL SPRINGS FL 33076
PHONE: 954-937-5239
KARINAV@KMVFIBERTELECOM.COM



SITE INDEX

- 01 - COVER SHEET/SITE LOCATION
- 02 - OVERALL MAP
- 03 - CONSTRUCTION NOTES
- 04 - 04B - PLAN VIEWS & PROFILES
- 05 - TYPICAL
- 06 - 08 - MOTS

3				AS-BUILT
2	080223	KMV	AC	REVISION # 1
1	080123	KMV	GQ	ORIGINAL
NO.	DATE	ENG	DESIGN	DRAFTING
				COMMENT
BlueStream fiber				
CHECKED BY: GIULIANO LEON				
ENGINEERING FIRM: KMV FIBERTELECOM INC				
PROJECT NUMBER: KMV-BS-23-102				
LOCATION: 4801 S OCEAN BLVD				
HIGHLAND BEACH, FL 33487				
DRAWING NAME: KMV-BS-23-102 - BOCA HIGHLANDS, HIGHLAND BEACH.dwg				
CONFIDENTIAL/PROPRIETARY				
SHEET: 01 OF 08				

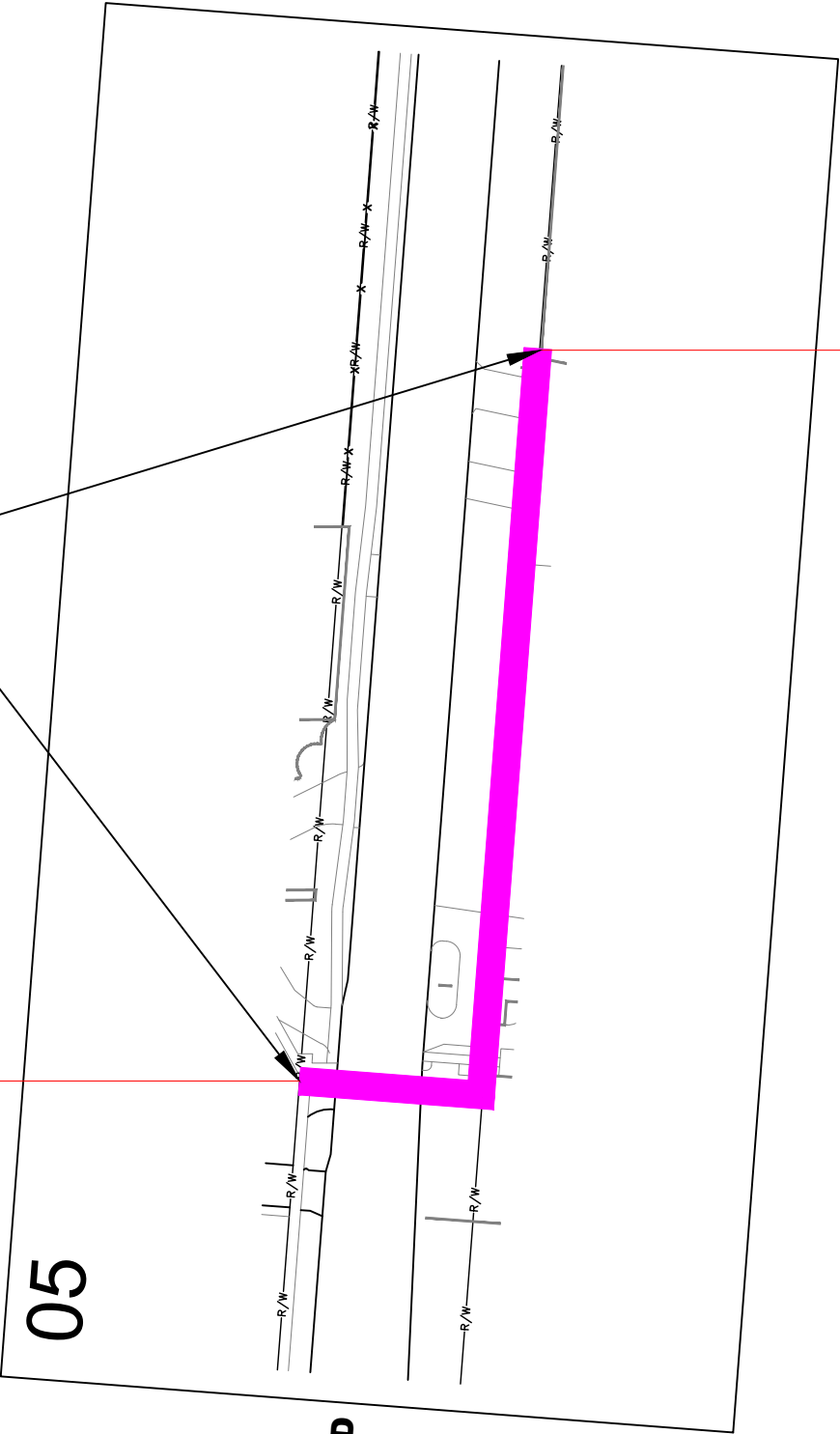
FDOT PERMIT

CITY OF HIGHLAND
BEACH PERMIT

MOT INDEX 102 - 602

END
5+35

START
0+00



S OCEAN BLVD
SR A1A



3				AS-BUILT
2	080223	KMV	AC	REVISION # 1
1	080123	KMV	GQ	ORIGINAL
NO.	DATE	ENG	DESIGN	DRAFTING
				COMMENT
CHECKED BY: GIULIANO LEON				
ENGINEERING FIRM: KMV FIBERTELECOM INC				
PROJECT NUMBER: KMV-BS-23-102				
LOCATION: 4801 S OCEAN BLVD HIGHLAND BEACH, FL 33487				
DRAWING NAME: KMV-BS-23-102 - BOCA HIGHLANDS, HIGHLAND BEACH.dwg				
CONFIDENTIAL/PROPRIETARY				
SHEET: 02 OF 08				

CONSTRUCTION NOTES

TYPICAL UNDERGROUND CONSTRUCTION:

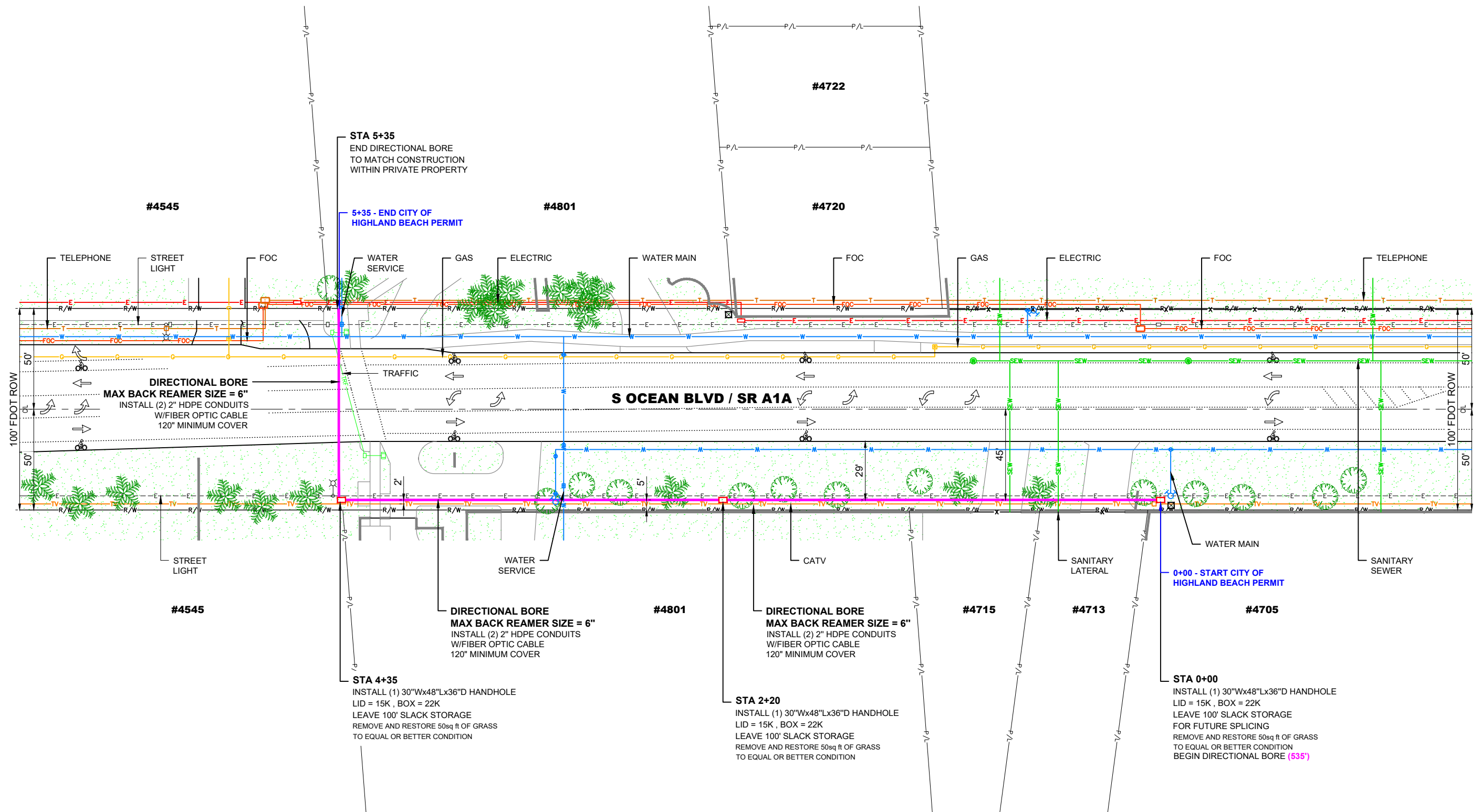
- RESTORE ALL SURFACES TO EQUAL OR BETTER CONDITION.
- CONTRACTOR TO VERIFY ALL MEASUREMENTS AND DISTANCES PRIOR TO CONSTRUCTION.
- CONTRACTOR TO VERIFY LOCATION AND CONDITION OF EXISTING CONDUIT PRIOR TO CONSTRUCTION.
- CONTRACTOR SHALL VERIFY ALL PLANS, EXISTING DIMENSIONS AND CONDITIONS ON THE JOB SITE AND IMMEDIATELY NOTIFY THE ENGINEER IN WRITING OF ANY DISCREPANCIES BEFORE PROCEEDING WITH THE WORK.
- MAINTAIN MINIMUM 24" VERTICAL AND HORIZONTAL SEPARATION BETWEEN PROPOSED BY BLUE STREAM DUCTS & EXISTING UTILITIES.
- MAINTAIN A MIN BENDING RADIUS OF 5' ON ALL DUCT CONFIGURATION.
- ANY CHANGES ON PROPOSED RUNNING LINE HAVE TO GET APPROVAL FROM BLUE STREAM CONSTRUCTION MANAGER.

FOR CONSTRUCTION:

- EXTREME CAUTION TO BE TAKEN TO CONTAIN SLURRY AROUND WORK AREAS NEAR WETLANDS TO AVOID ANY WATER QUALITY ISSUES!
- LOCATIONS, ELEVATIONS LOCATIONS, ELEVATIONS AND DIMENSIONS OF EXISTING UTILITIES, STRUCTURES AND OTHER SITE FEATURES SHOWN ON THE DRAWINGS ARE BASED ON LIMITED INVESTIGATION TECHNIQUES AND SHOULD BE CONSIDERED APPROXIMATE ONLY. PLEASE CONTACT SUNSHINE STATE ONE-CALL AT 1-800-432-4770
- **CAUTION:** EXISTING UNDERGROUND UTILITIES IN AREA. NO ELEVATION RECORDS FOR EXISTING UTILITIES AVAILABLE. CONTRACTOR SHOULD CONTACT SUNSHINE 811, LOCATE ALL UTILITIES AND VERIFY ALL DEPTHS PRIOR TO CONSTRUCTION

DESIGN TICKET
#212308223

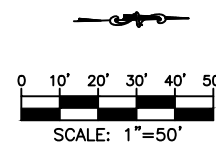
3				AS-BUILT
2	080223	KMV	AC	REVISION # 1
1	080123	KMV	GQ	ORIGINAL
NO.	DATE	ENG DESIGN	DRAFTING	COMMENT
<div>BlueStream fiber</div>				
CHECKED BY: GIULIANO LEON				
ENGINEERING FIRM: KMV FIBERTELECOM INC				
PROJECT NUMBER: KMV-BS-23-102				
LOCATION: 4801 S OCEAN BLVD HIGHLAND BEACH, FL 33487				
DRAWING NAME: KMV-BS-23-102 - BOCA HIGHLANDS, HIGHLAND BEACH.dwg				
CONFIDENTIAL/PROPRIETARY SHEET: 03 OF 08				



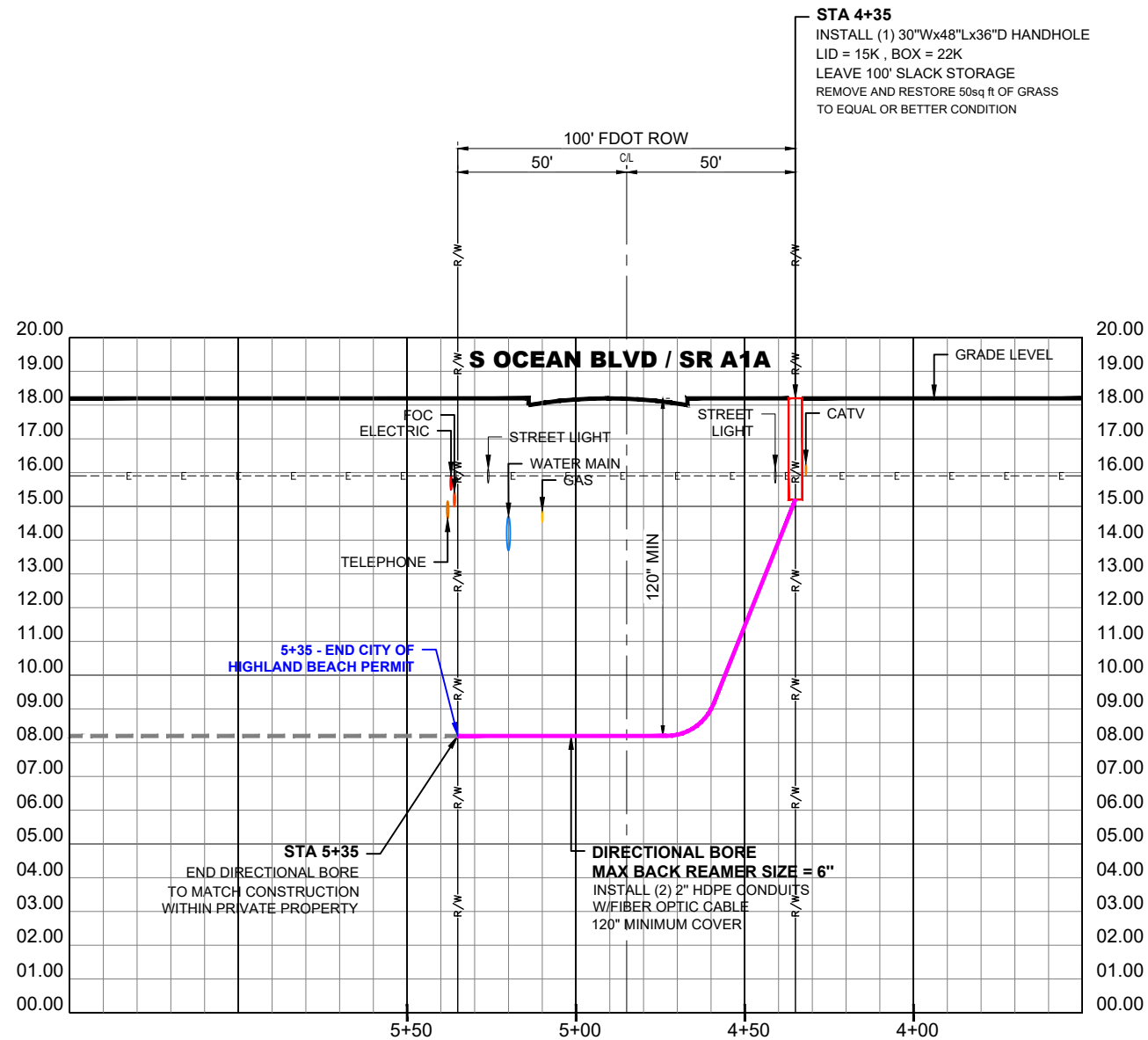
PLAN VIEW
SCALE: 1"=50'



Know what's below.
Call before you dig.



3				AS-BUILT
2	080223	KMV	AC	REVISION # 1
1	080123	KMV	GQ	ORIGINAL
NO.	DATE	ENG	DESIGN	DRAFTING
BlueStream fiber				
CHECKED BY: GIULIANO LEON				
ENGINEERING FIRM: KMV FIBERTELECOM INC				
PROJECT NUMBER: KMV-BS-23-102				
LOCATION: 4801 S OCEAN BLVD HIGHLAND BEACH, FL 33487				
DRAWING NAME: KMV-BS-23-102 - BOCA HIGHLANDS, HIGHLAND BEACH.dwg				
CONFIDENTIAL/PROPRIETARY				
SHEET: 04 OF 08				



CROSS SECTION - S OCEAN BLVD / SR A1A (LOOKING NORTH)

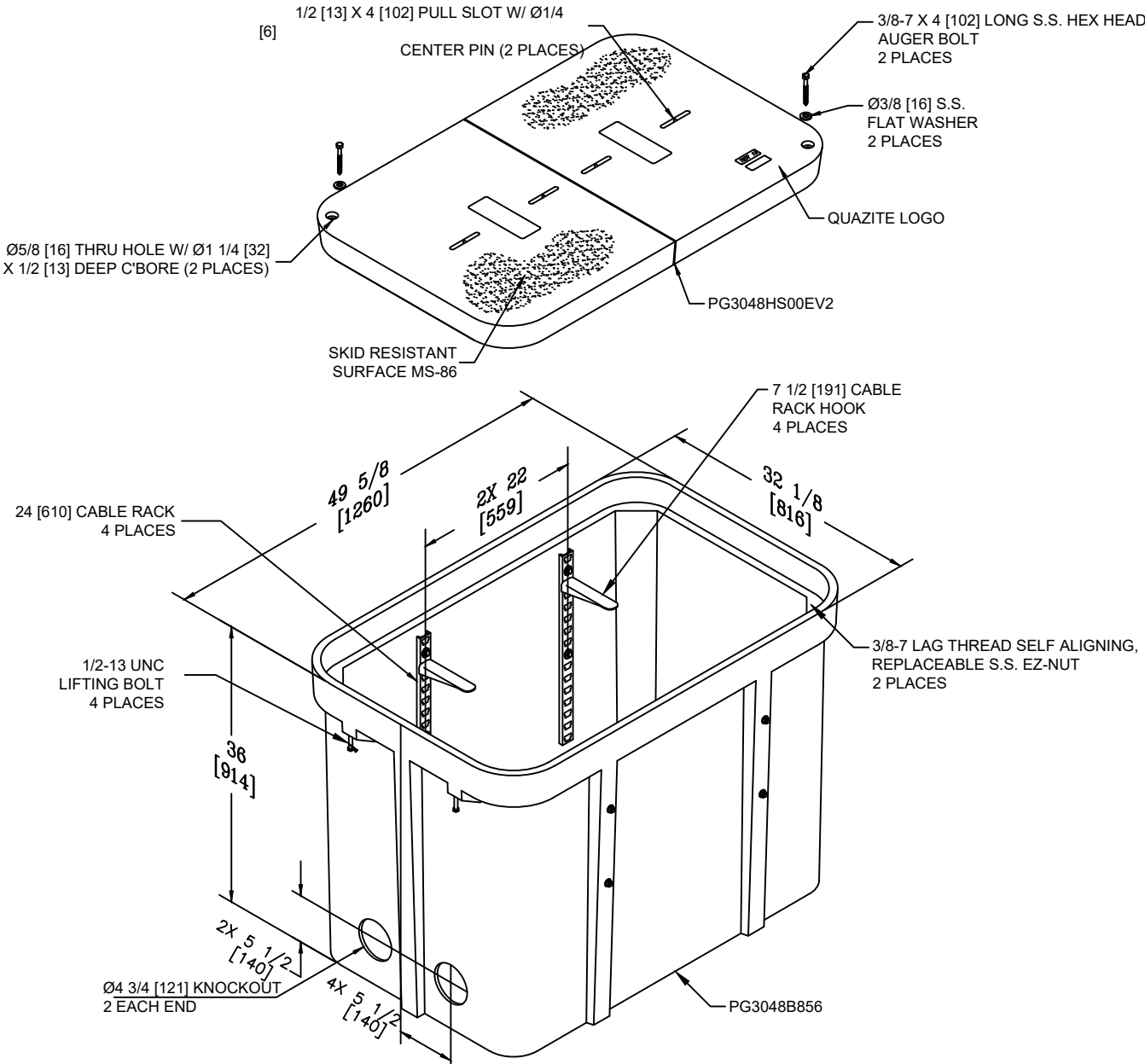
HORIZONTAL SCALE: 1"=50'
VERTICAL SCALE: 1"=5'

**RECORD ON UTILITY PLANS
CONSTRUCTION CONTRACTOR
SHALL CALL LOCATES AND SOFT DIG TO DETERMINE
UTILITY ELEVATION BEFORE CONSTRUCTION.**



3				AS-BUILT
2	080223	KMV	AC	REVISION # 1
1	080123	KMV	GQ	ORIGINAL
NO.	DATE	ENG. DESIGN	DRAFTING	COMMENT
BlueStream fiber				
CHECKED BY: GIULIANO LEON				
ENGINEERING FIRM: KMV FIBERTELECOM INC				
PROJECT NUMBER: KMV-BS-23-102				
LOCATION: 4801 S OCEAN BLVD HIGHLAND BEACH, FL 33487				
DRAWING NAME: KMV-BS-23-102 - BOCA HIGHLANDS, HIGHLAND BEACH.dwg				
CONFIDENTIAL/PROPRIETARY				
SHEET: 04B OF 08				

TYPICAL



TYPICAL DETAIL - # 2

QUAZITE 30X48X36 ASSEMBLY
W/(4) 24" CABLE RACKS
& (4) 7 1/2" HOOKS
PG3048Z987EV2

3				AS-BUILT
2	080223	KMV	AC	REVISION # 1
1	080123	KMV	GQ	ORIGINAL
NO.	DATE	ENG	DESIGN	DRAFTING
COMMENT				
CHECKED BY: GIULIANO LEON				
ENGINEERING FIRM: KMV FIBERTELECOM INC				
PROJECT NUMBER: KMV-BS-23-102				
LOCATION: 4801 S OCEAN BLVD				
HIGHLAND BEACH, FL 33487				
DRAWING NAME: KMV-BS-23-102 - BOCA HIGHLANDS, HIGHLAND BEACH.dwg				
CONFIDENTIAL/PROPRIETARY				
SHEET: 05 OF 08				

10/27/2022 7:35:59 AM

SHEET	TABLE OF CONTENTS
1	General Notes, TTC Tables
2	Definitions Temporary Traffic Control Devices Overhead Work Railroads Sight Distance Above Ground Hazard
3	Clear Zone Widths For Work Zones Superelevation Length Of Lane Closures Overweight/Oversize Vehicles Lane Widths High-Visibility Safety Apparel Speed Reduction Signing
4	Flagger Control Survey Work Zones Signs
5	Work Zone Sign Supports
6	Commonly Used Warning and Regulatory Signs In Work Zones
7	Manholes/Crosswalks/Joints Truck Mounted Attenuators Signals Channelizing Devices Channelizing Devices Consistency Advanced Warning Arrow Boards
8	Drop-Offs In Work Zones
9	Business Entrance Temporary Asphalt Separator
10	Channelizing Devices Notes Temporary Barrier Notes
11	Pavement Markings

GENERAL NOTES:

1. This Index contains information specific to the Federal and State guidelines and standards for the preparation of traffic control plans and for the execution of traffic control in work zones, for construction and maintenance operations and utility work on highways, roads and streets on the State Highway System. Certain requirements in this Index are based on the high volume nature of State Highways. For highways, roads and streets off the State Highway System, the local agency (City/County) having jurisdiction may adopt requirements based on the minimum requirements provided in the MUTCD.
2. Use this Index in accordance with the Plans and Indexes 102-601 through 102-680. Indexes 102-601 through 102-680 are Department-specific typical applications of commonly encountered situations. Adjust device location or number thereof as recommended by the Worksite Traffic Supervisor and approved by the Engineer. Devices include, but are not limited to, flaggers, portable temporary signals, signs, pavement markings, and channelizing devices. Comply with MUTCD or applicable Department criteria for any changes and document the reason for the change.
3. Except for emergencies, any road closure on State Highway System must comply with Section 335.15, F.S.


TABLE 1 CHANNELIZING DEVICE SPACING				
Work Zone Speed (mph)	Max. Spacing (feet)			
	Cones or Temporary Tubular Markers		Type I Barricades, Type II Barricades, Vertical Panels, or Drums	
	Taper	Tangent	Taper	Tangent
≤ 45	25	50	25	50
≥ 50	25	50	50	100

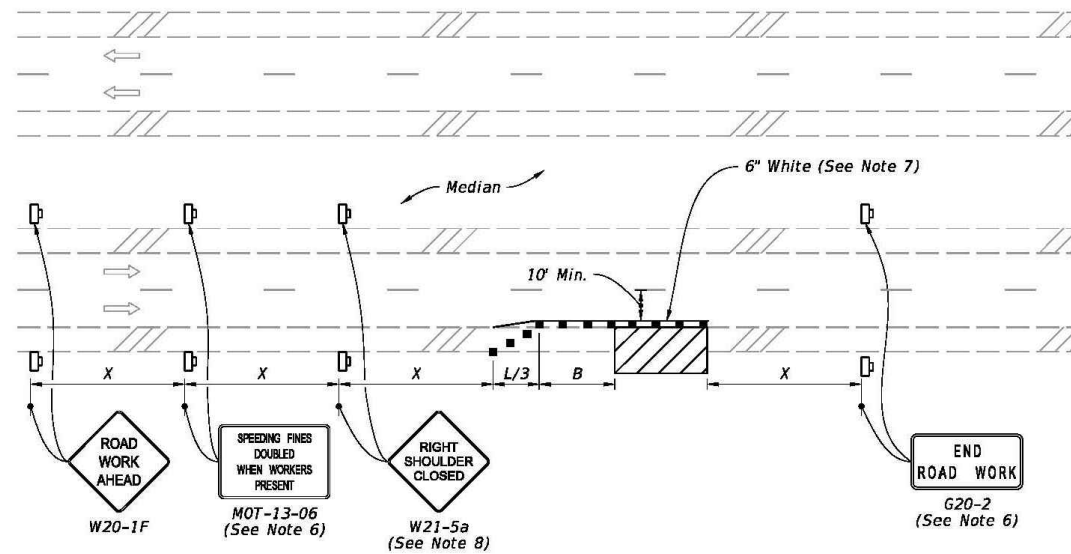
TABLE 2 TAPER LENGTH "L"	
Work Zone Speed (mph)	Min. Length (feet)
≤ 40	$L = \frac{WS^2}{60}$
≥ 45	$L = WS$
Where: W = width of offset in feet S = speed in mph	

TABLE 3 WORK ZONE SIGN SPACING "X"	
Road Type	Min. Spacing (feet)
Arterials and Collectors with Work Zone Speed ≤ 40 mph	200
Arterials and Collectors with Work Zone Speed ≥ 45 mph	500
Limited Access Roadways *	1,500
* For Limited access roadways with work zone speed ≤ 55 mph, the minimum spacing may be reduced in accordance with the MUTCD and as approved by the Engineer.	

TABLE 4 BUFFER LENGTH "B"	
Work Zone Speed (mph)	Min. Length (feet)
25	155
30	200
35	250
40	305
45	360
50	425
55	495
60	570
65	645
70	730
Note: When Buffer Length "B" cannot be attained due to geometric constraints, use the greatest length possible, but not less than 155 feet.	

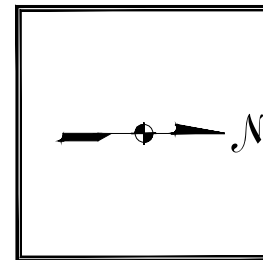
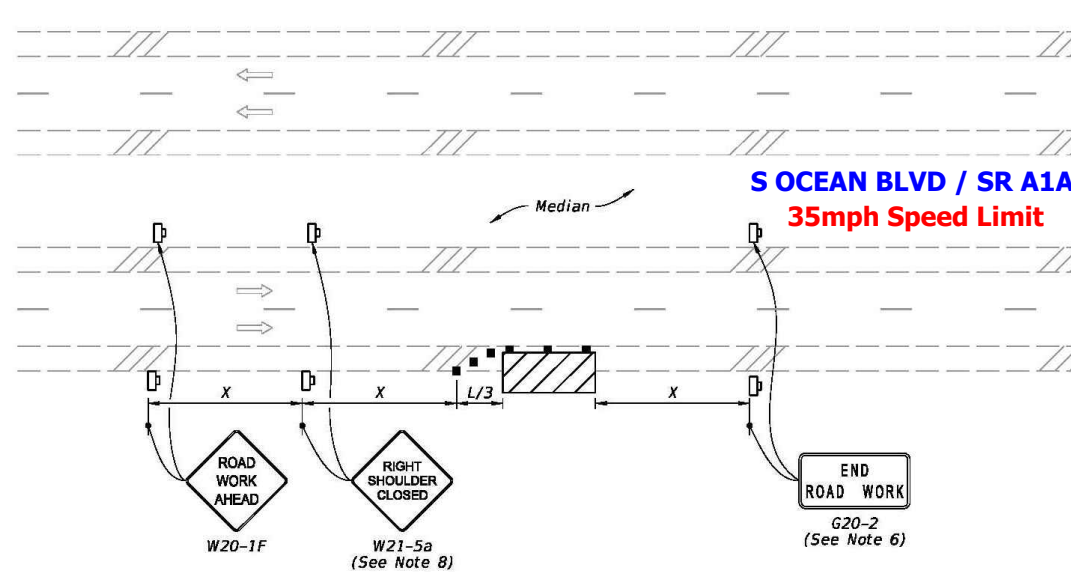
LAST REVISION 11/01/20	DESCRIPTION:	 FY 2023-24 STANDARD PLANS	GENERAL INFORMATION FOR TRAFFIC CONTROL THROUGH WORK ZONES	INDEX 102-600	SHEET 1 of 11
---------------------------	--------------	---	---	------------------	------------------

3				AS-BUILT
2	080223	KMV	AC	REVISION # 1
1	080123	KMV	GQ	ORIGINAL
NO.	DATE	ENG DESIGN	DRAFTING	COMMENT
				
CHECKED BY: GIULIANO LEON				
ENGINEERING FIRM: KMV FIBERTELECOM INC				
PROJECT NUMBER: KMV-BS-23-102				
LOCATION: 4801 S OCEAN BLVD HIGHLAND BEACH, FL 33487				
DRAWING NAME: KMV-BS-23-102-BOCA HIGHLANDS, HIGHLAND BEACH.dwg				
CONFIDENTIAL/PROPRIETARY SHEET: 06 OF 08				



DO NOT APPLY

MULTILANE ROADWAY
SHOULDER WORK LESS THAN 2' FROM THE TRAVELED WAY
WITH WORK ZONE SPEED OF 45 MPH OR LESS



S OCEAN BLVD / SR A1A
35mph Speed Limit

MULTILANE ROADWAY
SHOULDER WORK BETWEEN 2' AND 15' FROM THE TRAVELED WAY

- SYMBOLS:**
- Work Area
 - Channelizing Device (See Index 102-600)
 - Work Zone Sign
 - Lane Identification and Direction of Traffic



This Certifies that
JASON MCCLANAHAN
Has Completed a Florida Department of Transportation Approved
Temporary Traffic Control (TTC) Advanced (Refresher) Course.
Date Expires: 08/24/2024
Instructor: Juan Morales


Certificate # 65194
FDOT Provider # 37




ATSSA
Phone: 540-368-1701
15 Riverside Parkway Ste.100
Fredericksburg, VA,
www.atssa.com
jessica.scheyder@atssa.com

SAFER ROADS. SAVE LIVES

2/2/2023 10:33:38 AM

LAST REVISION 11/01/20	DESCRIPTION: PROPOSAL UNDERGROUND CONDUITS IN R/W S OCEAN BLVD / SR A1A	 FY 2023-24 STANDARD PLANS	TWO-LANE AND MULTILANE, WORK ON SHOULDER	INDEX 102-602	SHEET 2 of 2
------------------------------	---	--	---	-------------------------	------------------------

3				AS-BUILT
2	080223	KMV	AC	REVISION # 1
1	080123	KMV	GQ	ORIGINAL
NO.	DATE	ENG	DESIGN	DRAFTING
				
CHECKED BY: GIULIANO LEON				
ENGINEERING FIRM: KMV FIBERTELECOM INC				
PROJECT NUMBER: KMV-BS-23-102				
LOCATION: 4801 S OCEAN BLVD HIGHLAND BEACH, FL 33487				
DRAWING NAME: KMV-BS-23-102 - BOCA HIGHLANDS, HIGHLAND BEACH.dwg				
CONFIDENTIAL/PROPRIETARY				
SHEET: 07 OF 08				

Certificate of Completion

JASON MCCLANAHAN

**Has Completed a Florida Department of
Transportation Approved Temporary Traffic
Control (TTC) Advanced (Refresher) Course.**

08/24/2024

Date Expires

37

FDOT Provider #

Juan Morales

Instructor

65194

Certificate #



SAFER ROADS SAVE LIVES

ATSSA
15 Riverside Parkway Ste.100
Fredericksburg, VA,
www.atssa.com
jessica.scheyder@atssa.com



For more information about Temporary Traffic
Control (TTC) or to verify this certificate

www.motadmin.com

3				AS-BUILT
2	080223	KMV	AC	REVISION # 1
1	080123	KMV	GQ	ORIGINAL
NO.	DATE	ENG	DESIGN	DRAFTING
				COMMENT
The logo for BlueStream fiber features the words "BlueStream" in a blue, sans-serif font, with "fiber" in a smaller, green, sans-serif font below it. A green swoosh is positioned between the two words.				
CHECKED BY: GIULIANO LEON				
ENGINEERING FIRM: KMV FIBERTELECOM INC				
PROJECT NUMBER: KMV-BS-23-102				
LOCATION: 4801 S OCEAN BLVD				
HIGHLAND BEACH, FL 33487				
DRAWING NAME: KMV-BS-23-102 - BOCA HIGHLANDS, HIGHLAND BEACH.dwg				
CONFIDENTIAL/PROPRIETARY				
SHEET: 08 OF 08				