

SECTION No.(s): 93060000
S.R. No.(s): A1A
Permit No: 2021-L-496-00004
COUNTY: PALM BEACH

**DISTRICT FOUR (4) AMENDMENT NUMBER FOUR (4) TO STATE OF FLORIDA
DEPARTMENT OF TRANSPORTATION
LANDSCAPE INCLUSIVE MEMORANDUM OF AGREEMENT**

THIS AMENDMENT Number Four (4) to the Agreement dated July 20, 2017, made and entered into this _____ day of _____ 20____ by and between the State of Florida Department of Transportation hereinafter called the DEPARTMENT and the **TOWN OF HIGHLAND BEACH**, a municipal subdivision of the State of Florida, hereinafter called the AGENCY.

W I T N E S S E T H

WHEREAS, the parties entered into the Landscape Inclusive Maintenance Memorandum of Agreement dated, July 20, 2017 for the purpose of maintaining the landscape improvements by the AGENCY on State Road A1A (South Ocean Boulevard); and,

WHEREAS, the DEPARTMENT and the AGENCY have agreed to add additional landscape by permit to be installed on State Road A1A (South Ocean Boulevard) in accordance with the above referenced Agreement; and,

NOW THEREFORE, for and in consideration of mutual benefits that flow each to the other, the parties covenant and agree as follows:

1. Pursuant to Page 7, Paragraph 7 of the Landscape Inclusive Maintenance Memorandum of Agreement for State Road A1A (South Ocean Boulevard) dated July 20, 2017, the DEPARTMENT will allow an adjacent property owner to construct additional landscape improvements or to modify an improvement as indicated in **Exhibit "A"**, State Road A1A (South Ocean Boulevard) from M.P. 7.441 to M.P. 7.458. In accordance with the plans attached as **Exhibit "B"**.
2. The AGENCY shall agree to maintain the additional landscape improvements in the Agreement described above in according to the Maintenance Plan, **Exhibit "E"** of the original agreement and as follows:

PART II. SPECIFIC PROJECT SITE MAINTENANCE REQUIREMENTS AND RECOMMENDATIONS

1. *Elaeocarpus decipiens* (Japanese Blueberry) are intended to be maintained cone shaped, full to base at staggered heights 10'-14' OA by 6' spread at the base.
2. *Chamaerops humilis* (Mediterranean Fan Palm) is intended to be maintained according to its natural habit and height.
3. Do not remove fronds from self-cleaning palms, unless damaged. Palms with persistent fronds shall only have dead fronds removed, do not remove any green fronds. If it is deemed necessary to prune a palm's fronds, no fronds shall be trimmed above 3 o'clock and 9 o'clock on the horizontal plain.
4. Groundcover and shrub horizontal growth shall be maintained to prevent foliage from growing beyond the limits of the planting areas shown on the plan. Maintain a 6" setback from the foliage to the edge of curb, pavement, sidewalk and/or other hardscape improvements.
5. Maintain the vertical height of:
 - a) *Carissa macrocarpa* 'Emerald blanket' between 18" and 24", full to ground
 - b) *Nerium oleander* 'Petite blank' between 24" and 36", full to ground
 - c) *Euphorbia milii* 'Pink cadillac' at 18"
 - d) *Trachelospermum asiaticum* 'Minima' between 6" and 12"
6. *Paspalum notatum* (Bahia grass) mature height trim down to 3"- 4" not removing more than 1/3 of height of the leaf blade, once a week in summer and once every two weeks in fall and winter.
7. Inspect groundcovers and shrubs on a monthly basis per BMP's recommendations for maintaining full ground coverage.
8. Evaluate plant material on a monthly basis for pests, diseases, drought stress or general decline. If required, follow the integrated pest management program established by the Agency to ensure healthy plants.
9. Concrete pavers shall be inspected on a monthly basis for the aesthetic appearance and safety conditions. Address any issues identified by repairing or replacing those specific locations. To maintain the overall aesthetic appearance and safety of the concrete pavers they shall be cleaned on a yearly basis to prevent mold, dirt, oil, and gum build up. Joints and cracks shall be inspected on a monthly basis to keep those areas free of weeds.
10. Inspect the irrigation system performance on a monthly basis to ensure the system is providing 100% coverage, does not have sections of low pressure, heads and valves are clean and clear of debris and any damaged irrigation components (i.e., spray nozzles, spray heads, valve boxes, etc.) are repaired or replaced.

Except as modified by this Amendment, all terms and conditions of the original Agreement and all Amendments thereto shall remain in full force and effect.

LIST OF EXHIBITS

Exhibit A - Landscape Improvements Maintenance Boundaries Limits

Exhibit B - Landscape Improvement Plans

In Witness whereof, the parties hereto have executed with this Amendment effective the ____ day _____ year written and approved.

TOWN OF HIGHLAND BEACH

STATE OF FLORIDA
DEPARTMENT OF TRANSPORTATION

By: _____
Chairperson/Mayor/Manager

By: _____
Transportation Development Director

Attest: _____ (SEAL)
Clerk

Attest: _____
Executive Secretary

Legal Review Date

Legal Review Date

Office of the General Counsel

Office of the General Counsel

SECTION No.(s): 93060000
 S.R. No.(s): A1A
 Permit No: 2021-L-496-00004
 COUNTY: PALM BEACH

EXHIBIT A

LANDSCAPE IMPROVEMENTS MAINTENANCE BOUNDARIES LIMITS

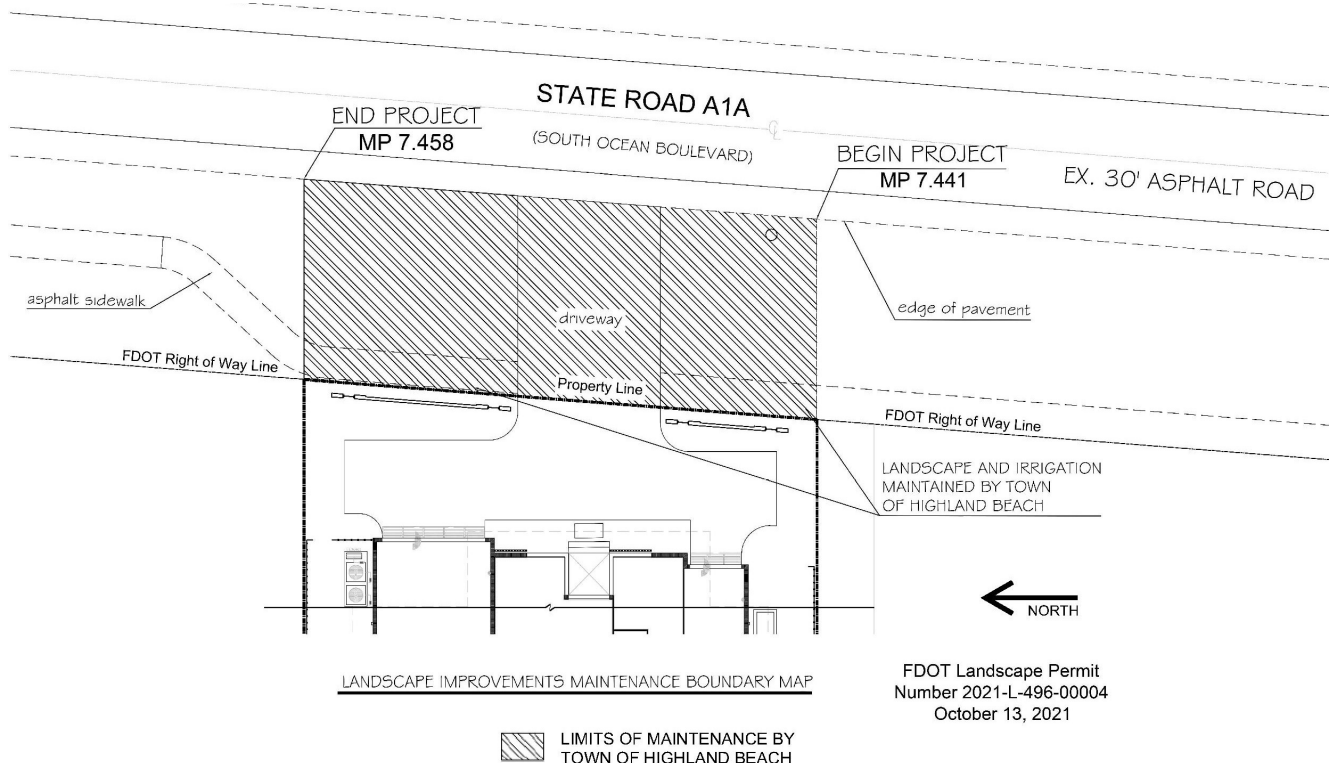
I. LANDSCAPE PERMIT PROJECT LIMITS FOR THIS PROJECT:

State Road A1A (South Ocean Boulevard) from M.P. 7.441 to M.P. 7.458

II. ORIGINAL INCLUSIVE LANDSCAPE MAINTENANCE AGREEMENT LIMITS:

State Road A1A (South Ocean Boulevard) from approximately $\frac{1}{4}$ mile North of Spanish River Blvd (M.P. 4.868) to approximately $\frac{1}{2}$ mile South of Linton Blvd (M.P. 7.711):

III. LANDSCAPE IMPROVEMENTS MAINTENANCE RESPONSIBILITIES FOR THIS PROJECT:



*All other limits of the original agreement and amendments shall apply

SECTION No.(s):	93060000
S.R. No.(s):	A1A
Permit No:	2021-L-496-00004
COUNTY:	PALM BEACH

EXHIBIT B

LANDSCAPE IMPROVEMENT PLANS

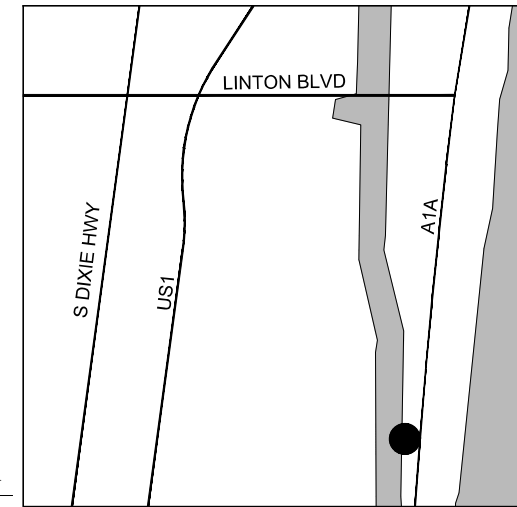
The AGENCY agrees to install the landscape improvements in accordance with the plans and specifications attached hereto and incorporated herein.

Please see attached plans prepared by: Gabriela Fojt, PLA
The Mirror of Paradise

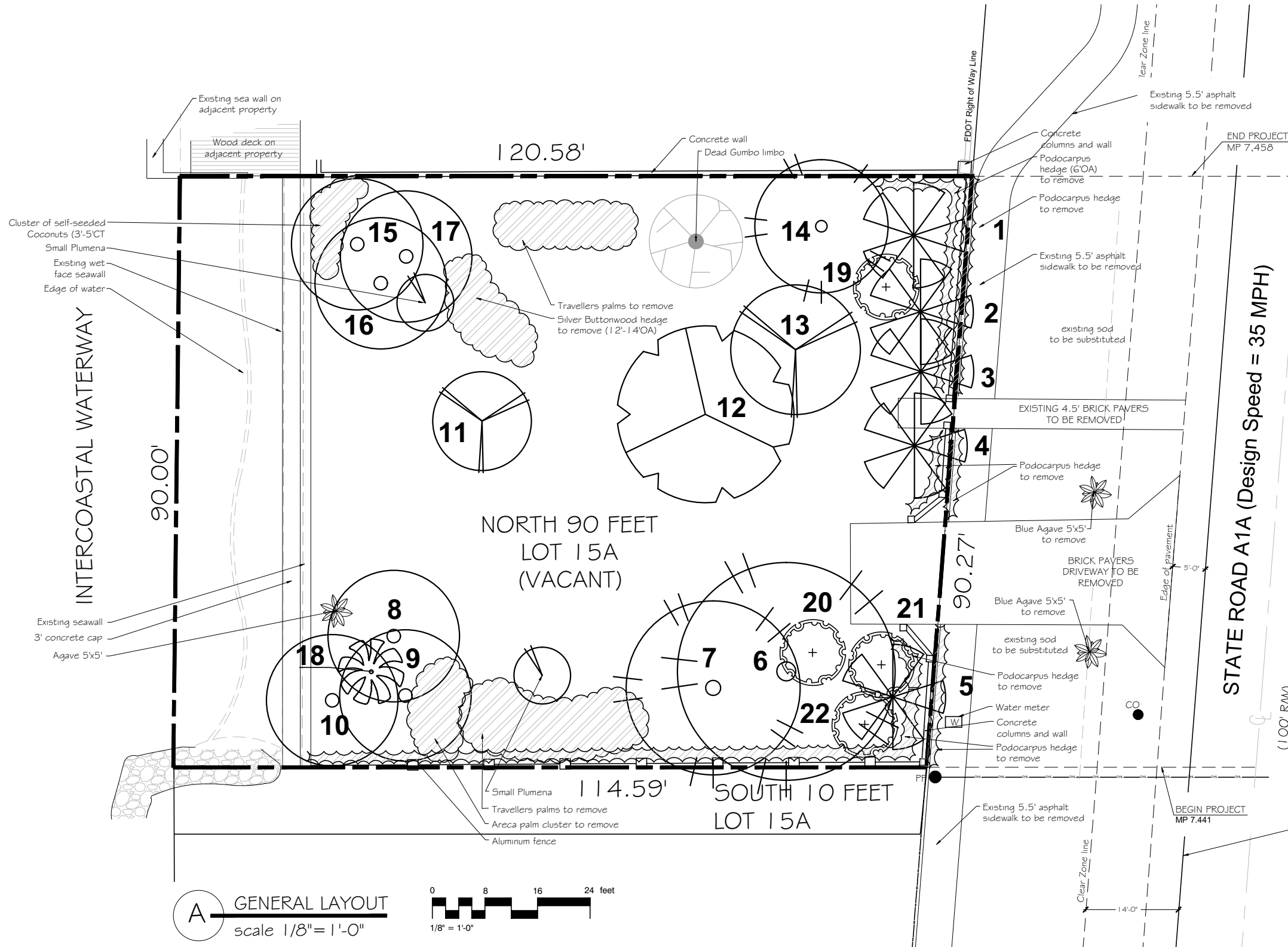
Dated: September 27, 2021

SEE DT-2 FOR EXISTING
TREE LIST AND PICTURES

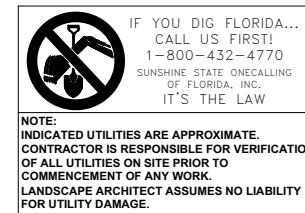
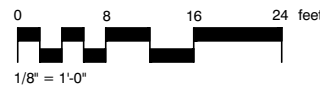
BASED ON 06.22.21 SITE VISIT



B LOCATION MAP
not to scale



A GENERAL LAYOUT
scale 1/8" = 1'-0"



FDOT Landscape Permit
Number 2021-L-496-00004



Gabriela Fojt
Digitally signed by Gabriela Fojt
Date: 2021.09.27 16:27:22 -04'00'

The Mirror of Paradise

Gabriela Fojt
LA 6667277
LC 26000628

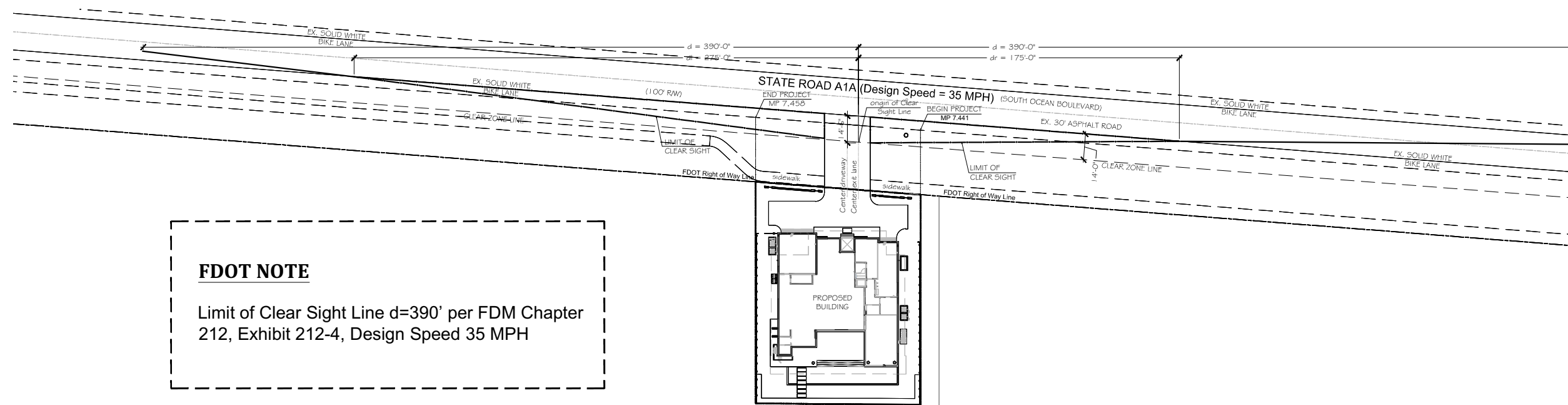
3900 Galt Ocean Dr
Fort Lauderdale
FL 33308
Tel (954) 478 3064
www.florida-landscape.com
gabriela@themirrorofparadise.com



SCALE	as noted
DESIGNED BY	GW.GF
DRAWN BY	GF
CHECKED BY	GW.GF
CAD DWG.	
DATE	05.28.2021
REVISIONS	
for FDOT approval	07.09.2021
per FDOT comments	08.20.2021
per FDOT comments	09.16.2021
per FDOT comments	09.27.2021

ADRIAN STITTS
2500 SOUTH OCEAN BLVD
HIGHLAND BEACH, FL 33487

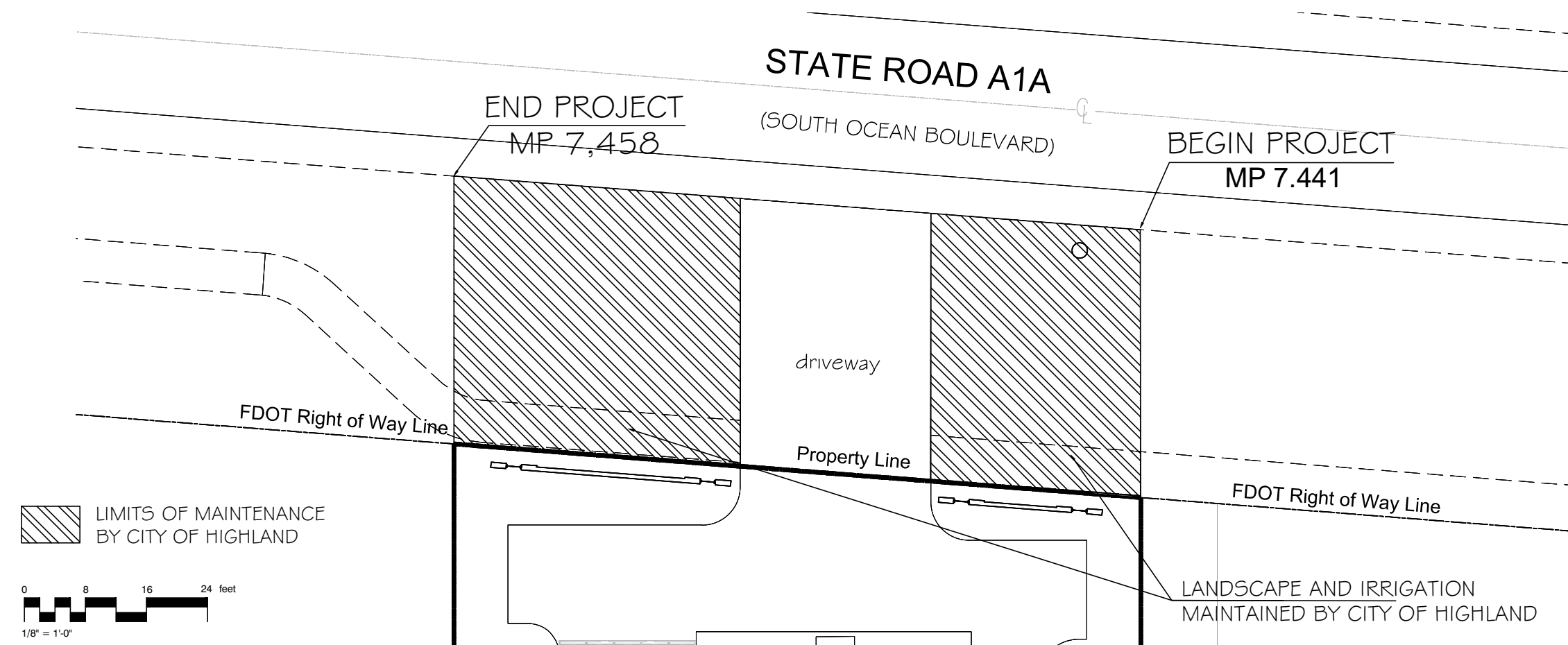
DISPOSITION PLAN



FDOT NOTE

Limit of Clear Sight Line d=390' per FDM Chapter 212, Exhibit 212-4, Design Speed 35 MPH

A FDOT CLEAR SIGHT LIMITS
scale 1"=30'-0"



B LANDSCAPE IMPROVEMENTS MAINTENANCE BOUNDARY MAP
scale 1/8"=1'-0"

**IF YOU DIG FLORIDA...
CALL US FIRST!**
1-800-432-4770
SUNSHINE STATE ONECALLING
OF FLORIDA, INC.
IT'S THE LAW

NOTE:
INDICATED UTILITIES ARE APPROXIMATE.
CONTRACTOR IS RESPONSIBLE FOR VERIFICATION
OF ALL UTILITIES ON SITE PRIOR TO
COMMENCEMENT OF ANY WORK.
LANDSCAPE ARCHITECT ASSUMES NO LIABILITY
FOR UTILITY DAMAGE.

FDOT Landscape Permit
Number 2021-L-496-00004



Gabriela Fojt
Digitally signed by Gabriela Fojt
Date: 2021.09.27 16:26:24 -04'00'

The Mirror of Paradise

Gabriela Fojt
LA 6667277
LC 26000628

3900 Galt Ocean Dr
Fort Lauderdale
FL 33308
Tel (954) 478 3064
www.florida-landscape.com
gabriela@themirrorofparadise.com



SCALE	as noted
DESIGNED BY	GW.GF
DRAWN BY	GF
CHECKED BY	GW.GF
CAD DWG.	
DATE	05.28.2021
REVISIONS	
for FDOT approval	07.09.2021
per FDOT comments	08.20.2021
per FDOT comments	09.16.2021
per FDOT comments	09.27.2021

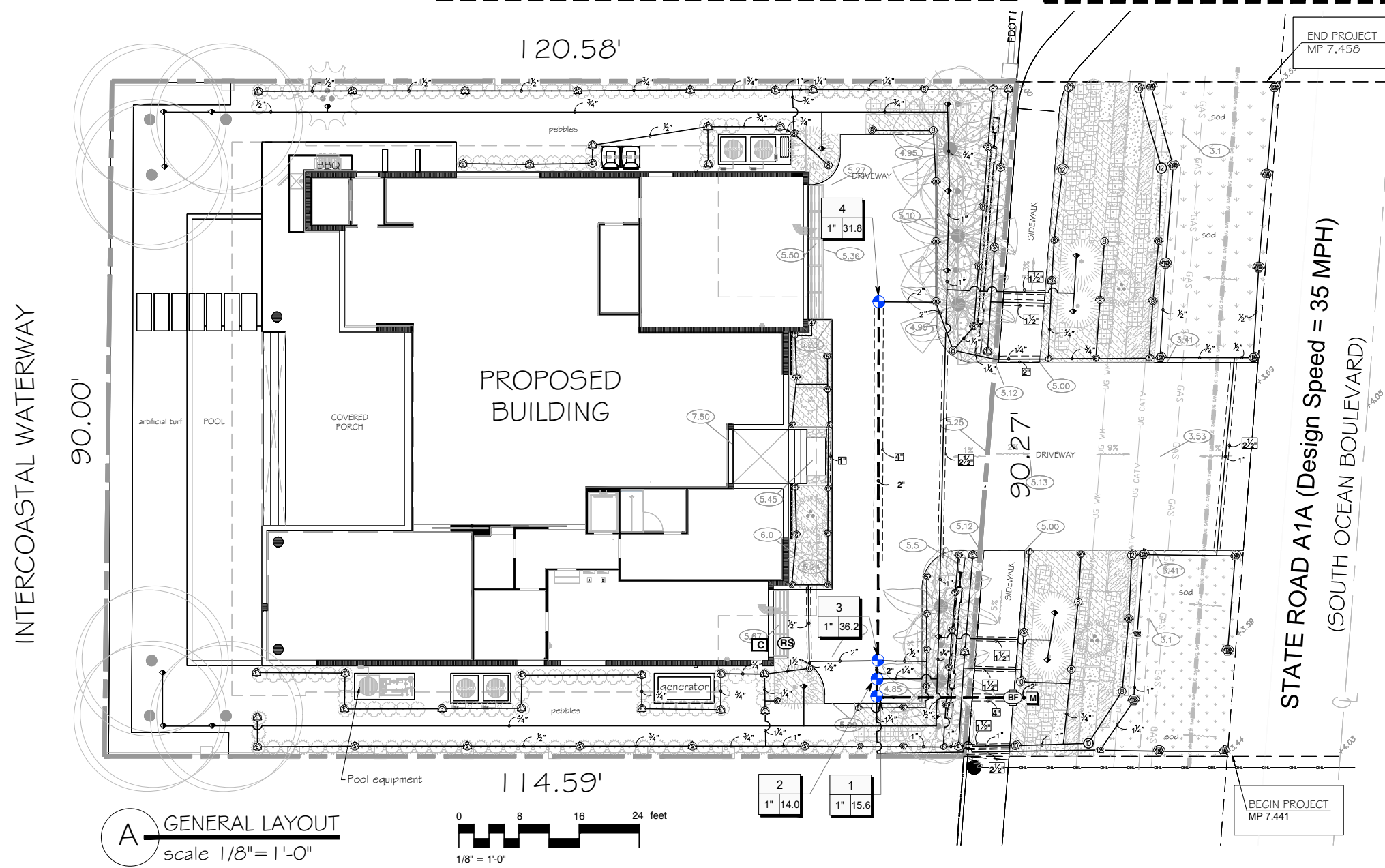
ADRIAN STITTS
2500 SOUTH OCEAN BLVD
HIGHLAND BEACH, FL 33487

FDOT SIGHT LIMITS, MAINTENANCE BOUNDARY

CONTRACTOR TO VERIFY SIZE OF WATER METER

SPRAY PATTERNS MAY CHANGE. CONTRACTOR TO MAKE NECESSARY ADJUSTMENT IN FIELD TO PREVENT OVER SPRAY

DIRECT SPRAY INTO PLANTERS SYMBOLS DO NOT REPRESENT THE DIRECTION OF SPRAY
LATERAL AND MAIN PIPE LOCATION IS SHOWN FOR CLARITY PURPOSE ONLY. INSTALL PIPES WITHIN PLANTING BEDS.



FDOT IRRIGATION NOTES

1. The irrigation system shall use the lowest quality water available which adequately and safely meets the water needs of the system. Storm water, reclaim water, or grey water irrigation shall be used whenever possible.
2. FDOT requires 24-hour emergency access to water source.
3. Contractor shall provide FDOT District Operations Manager with a set of "As-Built" irrigation plans.

NOTES

THE CONTRACTOR SHALL MAKE ALL ADJUSTMENTS TO THE IRRIGATION SYSTEM TO ENSURE 100% COVERAGE.

THE CONTRACTOR SHALL NOTIFY LANDSCAPE ARCHITECT OF ANY DISCREPANCIES IMMEDIATELY.

THE CONTRACTOR SHALL PROVIDE FULL SIZE "AS BUILT" DRAWINGS AS WELL AS A REDUCED SIZE WITH COLOR CODED ZONES SHOWING ZONES AND LIMITS, IN A WATERPROOF CLEAR SHEET PROTECTOR FOR CONTROLLER.

LAWN AND PLANTING BEDS SHALL BE ON SEPARATE ZONES.

CONTRACTOR SHALL REVIEW VALVE, CONTROLLER AND RAIN SWITCH LOCATION WITH GENERAL CONTRACTOR OR OWNER PRIOR TO CONSTRUCTION.

WHEN LOCATING ONE VALVE BOX NEXT TO ANOTHER, THERE SHALL BE A MIN. OF 18" SEPARATION TO ALLOW SOD TO GROW BETWEEN.

IF YOU DIG FLORIDA...
CALL US FIRST!
1-800-432-4770
SUNSHINE STATE ONECALLING
OF FLORIDA, INC.
IT'S THE LAW

NOTE:
INDICATED UTILITIES ARE APPROXIMATE.
CONTRACTOR IS RESPONSIBLE FOR VERIFICATION
OF ALL UTILITIES ON SITE PRIOR TO
COMMENCEMENT OF ANY WORK.
LANDSCAPE ARCHITECT ASSUMES NO LIABILITY
FOR UTILITY DAMAGE.

FDOT Landscape Permit
Number 2021-L-496-00004



Gabriela Fojt
Digitally signed by Gabriela Fojt
Date: 2021.09.27 16:24:59 -04'00'

The Mirror of Paradise

Gabriela Fojt
LA 6667277
LC 26000628

3900 Galt Ocean Dr
Fort Lauderdale
FL 33308
Tel (954) 478 3064
www.florida-landscape.com
gabriela@themirrorofparadise.com



SCALE	1/8" = 1'-0"
DESIGNED BY	GW,GF
DRAWN BY	GF
CHECKED BY	GW,GF
CAD DWG.	
DATE	05.28.2021
REVISIONS	
for FDOT approval	07.09.2021
per FDOT comments	08.20.2021
per FDOT comments	09.16.2021
per FDOT comments	09.27.2021

ADRIAN STITTS
2500 SOUTH OCEAN BLVD
HIGHLAND BEACH, FL 33487
IRRIGATION PLAN

VALVE SCHEDULE

NUMBER	MODEL	SIZE	TYPE	GPM	WIRE	PSI	PSI @ P.O.C.	PRECIP
1	Hunter PGV-101G	1"	Turf Spray	15.62	60.4	33.9	45.82	1.39 in/h
2	Hunter PGV-101G	1"	Bubbler	14.00	66.1	24.11	41.14	3.4 in/h
3	Hunter PGV-101G	1"	Shrub Spray	36.20	63.6	38.27	51.76	1.84 in/h
4	Hunter PGV-101G	1"	Shrub Spray	31.79	63.6	37.8	50.99	1.47 in/h
	Common Wire				73.3			

IRRIGATION SCHEDULE

SYMBOL	MANUFACTURER/MODEL	QTY	PSI
	Hunter PROS-O4 12' radius	14	30
	Hunter PROS-O4 adjustable arc	2	30
	Hunter PROS-12 short radius nozzles	23	30
	Hunter PROS-12 5' strip spray	44	30
	Hunter PROS-12 5' radius	9	30
	Hunter PROS-12 8' radius	17	30
	Hunter PROS-12 10' radius	4	30
	Hunter PROS-12 12' radius	2	30
	Hunter PROS-12 Adjustable Arc	10	30
	Hunter PROS-00-PCN 10	18	25

SYMBOL	MANUFACTURER/MODEL	QTY
	Hunter PGV-101G	4
	Febco 825Y 1"	1
	Hunter Pro-C	1
	Hunter 502-C Rain sensor	1
	Irrigation Lateral Line: PVC Class 200	1,463 l.f.
	Irrigation Mainline: PVC Schedule 40	73.3 l.f.
	Pipe Sleeve: PVC Class 200	145.3 l.f.
	Valve Callout	
	Valve Number	
	Valve Flow	
	Valve Size	

CRITICAL ANALYSIS

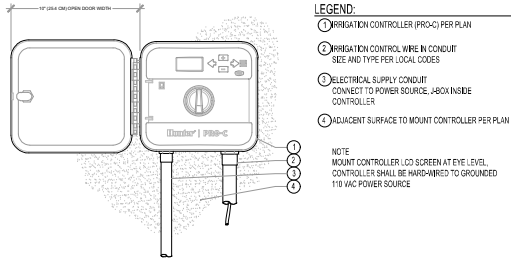
Generated: 2021-09-23 10:35
P.O.C. NUMBER: 01
Water Source Information:

FLOW AVAILABLE
Water Meter Size: 1-1/2"
Flow Available: 75.00 gpm

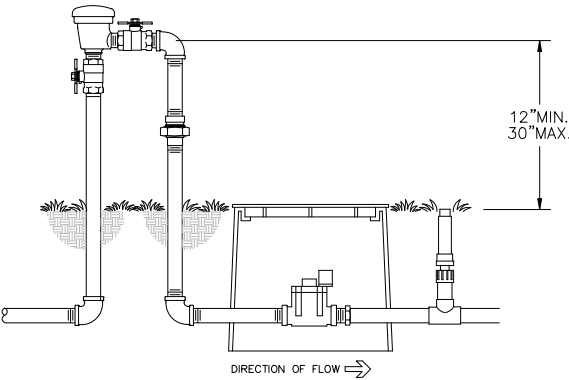
PRESSURE AVAILABLE
Static Pressure at P.O.C.: 60.00 PSI
Elevation Change: 2.00 ft
Service Line Size: 3"
Length of Service Line: 20 ft
Pressure Available: 59.00 psi

DESIGN ANALYSIS
Maximum Station Flow: 36.20 gpm
Flow Available at P.O.C.: 75.00 gpm
Residual Flow Available: 38.80 gpm

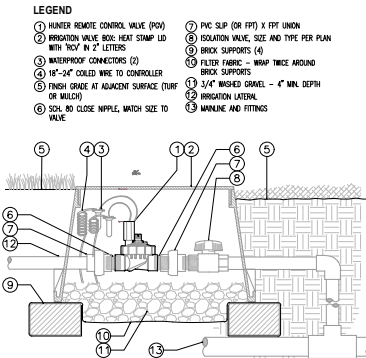
Critical Station: 3
Design Pressure: 30.00 psi
Friction Loss: 1.98 psi
Fittings Loss: 0.19 psi
Elevation Loss: 0.00 psi
Loss through Valve: 6.10 psi
Pressure Req. at Critical Station: 38.25 psi
Loss for Fittings: 0.03 psi
Loss for Main Line: 0.26 psi
Loss for P.O.C. to Valve Elevation: 0.00 psi
Loss for Backflow: 10.45 psi
Loss for Water Meter: 2.77 psi
Critical Station Pressure at P.O.C.: 51.76 psi
Pressure Available: 59.00 psi
Residual Pressure Available: 7.24 psi



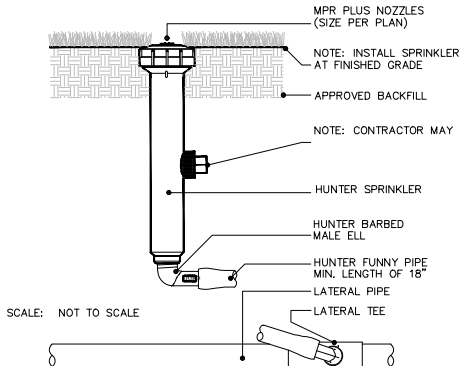
PRO-C - WALL MOUNT
(NOT TO SCALE)



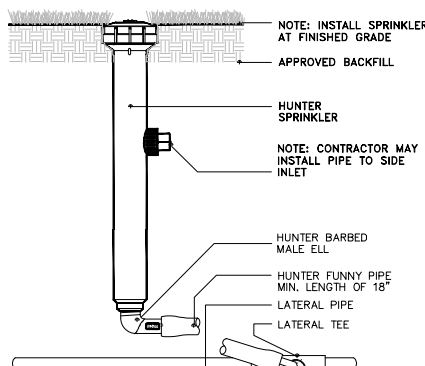
FEBCO 825Y
PRESSURE VACUUM BREAKER ASSEMBLY
OUTDOOR HORIZONTAL INSTALLATION



IN-LINE VALVE (PGV-101JT-G)
WITH UNIONS AND ISOLATION VALVE (NOT TO SCALE)



6" POP UP
HUNTER (NOT TO SCALE)



12" POP UP
HUNTER (NOT TO SCALE)

IRRIGATION SPECIFICATIONS

A. EXTENT:

Includes furnishing all labor, materials and equipment for the proper installation of the irrigation system. The work includes, but is not limited to the following: (1) Trenching and Backfill; (2) Automatically Controlled Irrigation System; (3) Test All Systems and Make Operative; (4) "As-Built" Drawings.

B. GENERAL:

- Permits and Fees: Obtain all permits and pay required fees to any governmental agency having jurisdiction over the work. Inspections required by local ordinances during the course of construction shall be arranged as required. On completion of the work, satisfactory evidence shall be furnished to the Tenant's construction representative to show that all work has been installed in accordance with the ordinances and code requirements.
- Approval: Wherever the terms "approve" or "approved" are used in the specifications, they shall mean the approval of the tenant's construction representative in writing.
- Before any work is started, a conference shall be held between the contractor and the Tenant's construction representative concerning the work under this Contract.
- Coordination: Coordinate and cooperate with other contractors to enable the work to proceed as rapidly and efficiently as possible.
- Inspection of Site:
 - Contractor shall acquaint himself with all site conditions. Submission of his proposal shall be considered evidence that the examination has been conducted. Should utilities not shown on the plans be found during excavations, Contractor shall promptly notify the Tenant's construction representative for instructions as to further action. Failure to do so will make contractor liable for any and all damage thereto arising from his operations subsequent to discovery of such utilities not shown in plans.
 - Contractor shall make necessary adjustments in the layout as may be required to connect to existing stubouts, should such stubs not be located exactly as shown, and as may be required to work around existing work at no increase in cost to the Tenant's construction representative.
- Protection of Existing Plants and Site Conditions: The Contractor shall take necessary precautions to protect site conditions to remain. Should damage be incurred, this Contractor shall repair the damage to its original condition at his own expense.
- The owner reserves the right to substitute, add, or delete any material or work as the work progresses. Adjustments to the contract price shall be negotiated if deemed necessary by the Owner on a per diem basis.
- The Owner reserves the right to reject material or work which does not conform to the Contract Documents. Rejected work shall be removed or corrected at the earliest time possible.
- Work Schedule: Within 10 days after award of the Contract, the contractor shall submit to the Owner a work schedule.
- "As-Built" Irrigation Drawings: Prepare an "As-Built" drawing on a blueprint which shall show deviations from the bid documents made during construction affecting the main line pipe, controller locations, remote control valves and quick coupling valves. The drawings shall also indicate and show approved substitutions of size, material and manufacturers name and catalog name and catalog number. The drawings shall be delivered to the Tenant's construction representative before final acceptance of the work.
- Final Acceptance: Final acceptance of the work may be obtained from the Tenant's construction representative upon the satisfactory work, completion of all work.
- Guarantee: All work shall be guaranteed for one year from date of acceptance against all defects in material, equipment and workmanship. Guarantee shall also cover repair of damage to any part of the premises resulting from leaks or other defects in material, equipment and workmanship to the satisfactory of the Tenant's construction representative. Repairs, if required, shall be done promptly at no cost to the Owner.

C. MATERIALS:

- General: All materials throughout the system shall be new and in perfect condition.
- Plastic Piping: All main lines shall be Sch. 40 Type 1120-1220 polyvinyl chloride (PVC) pipe and shall conform to CS-256-63. All lateral piping shall be class 40 Type 1120-1220 polyvinyl chloride (PVC) pipe and shall conform to CS-256-63.
- Plastic Fittings: Sch. 80 solvent weld, polyvinyl chloride (PVC) for mainline and Sch. 40 solvent weld, polyvinyl chloride (PVC) for zone laterals, as manufactured by Sloane, Lanco, or approved equal.
- Solvent Cement: Compatible with PVC pipe, of proper consistency, and color.
- Sprinkler Head Risers: Sch. 40 PVC for risers. Pipe shall be cut in a standard pipe cutting tool with sharp cutters. Ream only to full diameter of pipe and clean all rough edges or burrs. Cut all threads accurately with sharp dies. Not more than three(3) full threads shall show beyond fittings when pipe is made up. Assemblies shall be as detailed.
- Automatic Controllers: See Legend

- Remote Control Valves: See Legend
- Control Wiring: 24 volt solid UL approved for direct burial in ground. Minimum wire size: 14 gauge.
- Sleeves for Control Wiring: Under all walks and paved areas and where indicated on drawings. Minimum PVC 1220-160 psi plastic pipe.
- Sprinkler Heads: See Legend

D. WORKMANSHIP:

- Lay out work as accurately as possible to the drawings. The drawings, though carefully drawn, are generally diagrammatic to the extent that swing joints, offsets, and all fittings are not shown.
- The Contractor shall be responsible for full and complete coverage of all irrigated areas and shall make any necessary minor adjustments at no additional cost to the Tenant's construction representative.
- Any major revisions to the irrigation system must be submitted and answered in written form, along with any change in contract price.

E. INSTALLATION:

- Excavation and Trenching:
 - Perform all excavations as required for the installation of the work including under this section, including shoring of earth banks to prevent cave-ins. Restore all surfaces, existing underground installations, etc., damaged or cut as a result of the excavations to their original condition and in a manner approved by the Owner.
 - Trenches shall be made wide enough to allow a minimum of 6 inches between parallel pipe lines. Trenches for pipe lines shall be made of sufficient depths to provide the minimum cover from finish grade as follows:
 - 18" minimum cover over main lines
 - 18" minimum cover over control wiring from controller to valves.
 - 12" minimum cover over lateral lines to heads.
 - Maintain all warning signs, shoring, barricades, flares and red lanterns as required by the Safety Orders of the Division of Industrial Safety and local ordinances.
- Pipe Line Assembly:
 - Install remote control valves where shown and group together where practical; place no closer than 6 inches to walk edges, buildings and connections are required. Pipe and fittings shall be toughly cleaned of dirt, dust and moisture before applying solvent with a non-synthetic bristle brush.
 - Pipe may be assembled and welded on the surface. Snake pipe from side to side of trench bottom to allow for expansion and contraction.
 - Make all connections between plastic pipe and metal valves or steel pipe with threaded fittings using plastic male adapters.
- Sprinkler Heads:
 - Do not scale plans for exact head location.
- Flushing Lines:
 - Thoroughly flush out all water lines before installing valves and sprinkler heads.
 - Upon completion of the flushing and installing valves and heads, the contractor adjust sprinkler heads for proper distribution to the landscape areas, limiting unnecessary overspray.
- Automatic Controllers:
 - Connect remote control valves to controller in a clockwise sequence to correspond with station setting beginning with Stations 1, 2, 3, etc.
- Automatic Control Wiring:
 - Install control wiring, sprinkler mains and laterals in common trenches wherever possible. Tie wires in bundles
 - Install control wires at least 24" below finish grade and lay to the side and below the main line. Provide looped slack at valves and snake wires in trench to allow for contraction of wires at intervals.
 - Control wire splices will be allowed only runs over 500 ft.
 - All wiring passing under existing or future paving, construction, etc., shall be encased in plastic or galvanized steel conduit extending at least 12" beyond edges of paving or construction.
- Backfill and Compacting:
 - After system is operating and required tests and inspections have been made, backfill excavations and trenches with clean soil, free of rubbish.
 - Backfill for all trenches, regardless of the type of pipe covered, shall be compacted to minimum 90% density.
 - Compact trenches in areas to be planted by thoroughly flooding the backfill. Jetting process may be used in those areas.
 - Dress off all areas to finish grades.

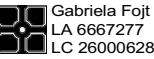
F. CLEAN-UP:

Remove from the site all debris resulting from work of this section.



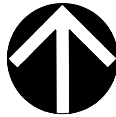
Gabriela Fojt
Digitally signed by Gabriela Fojt
Date: 2021.09.27 16:25:55 -04'00'

The Mirror of Paradise

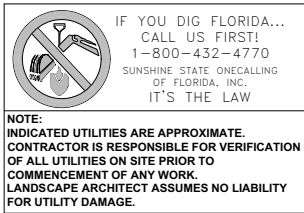


Gabriela Fojt
LA 6667277
LC 26000628

3900 Galt Ocean Dr
Fort Lauderdale
FL 33308
Tel (954) 478 3064
www.florida-landscape.com
gabriela@themirrorofparadise.com



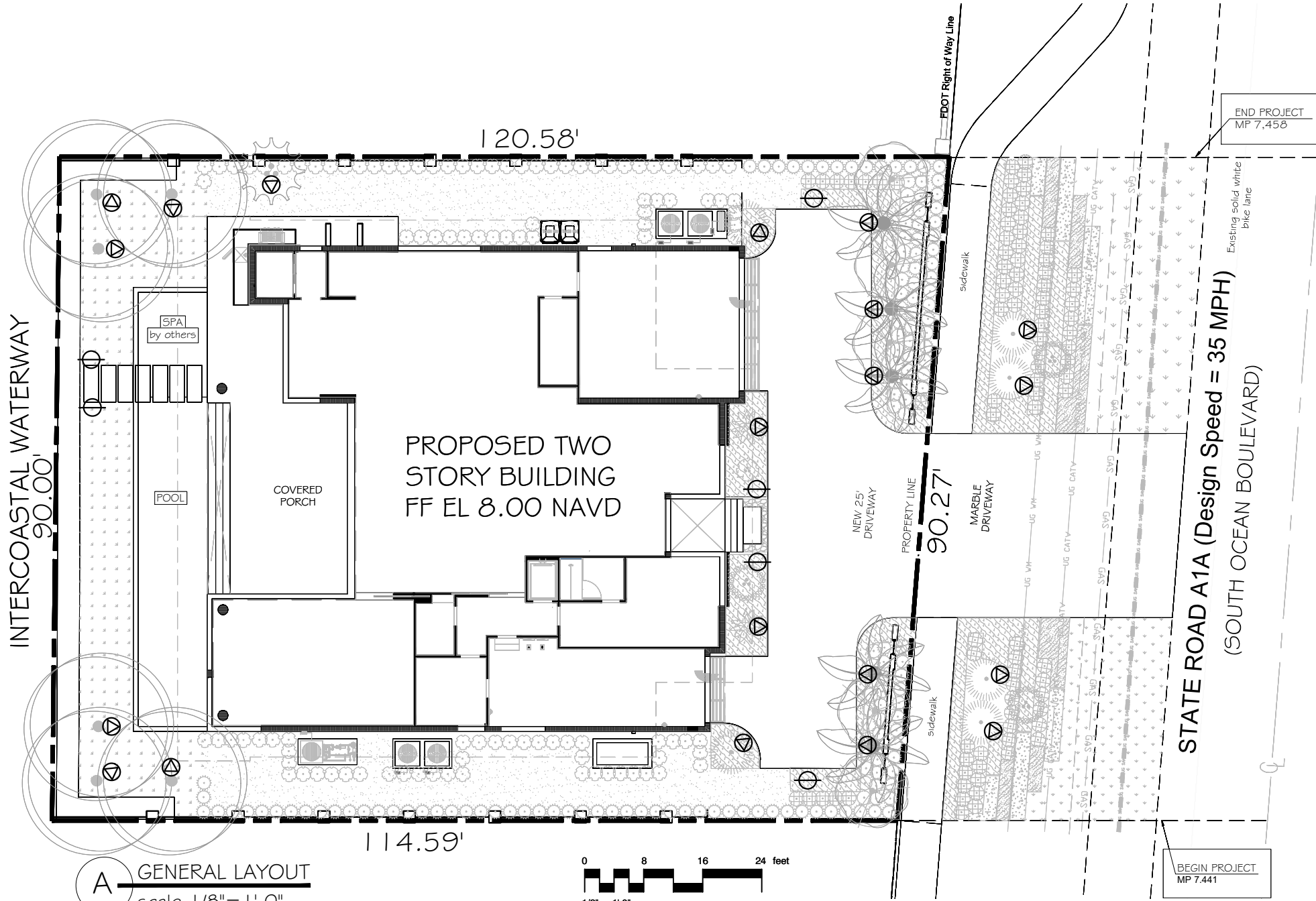
SCALE	1/8" = 1'-0"
DESIGNED BY	GW,GF
DRAWN BY	GF
CHECKED BY	GW,GF
CAD DWG.	
DATE	05.28.2021
REVISIONS	
for FDOT approval	07.09.2021
per FDOT comments	08.20.2021
per FDOT comments	09.16.2021
per FDOT comments	09.27.2021



FDOT Landscape Permit
Number 2021-L-496-00004

ADRIAN STITTS
2500 SOUTH OCEAN BLVD
HIGHLAND BEACH, FL 33487

NOTES & DETAILS



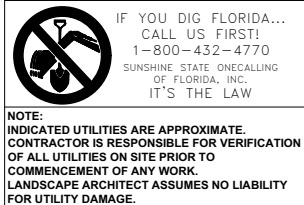
A GENERAL LAYOUT
scale 1/8"=1'-0"

QTY	SYM	TYPE
6		KICHLER MODEL 15844 AZT PATHWAY LIGHT, TEXTURED ARCHITECTURAL FINISH
20		KICHLER MODEL 16157 AZT ACCENT LIGHT, TEXTURED ARCHITECTURAL FINISH, MOUNTED 35° ANGLE

B LIGHTING KEY

ELECTRICAL CONTRACTOR TO VERIFY LOCATION OF ALL UNDERGROUND UTILITIES PRIOR TO INSTALLATION OF LANDSCAPE LIGHTING.

ELECTRICAL CONTRACTOR TO INCLUDE ALL HARDWARE, WIRING, J-BOXES, AND TRANSFORMERS IN SCOPE OF INSTALLATION.



 **PATHWAY LIGHT 15844 AZT**
12V Two Arm Path Light with LED Lamp
15844

PROJECT:
TYPE:

ORDERING:
COMMENTS:

OVERVIEW
The Double-Arm path light has a clean, modern design that creates a shadow pattern behind it. This fixture combines clean and modern design with robust and durable construction.

FEATURES

- Thick, robust cast construction
- Textured diffusion lens for glare control and uniform light spread
- No visible seams or screws
- Optimized socket location, easy to lamp

SPECIFICATIONS

Fixture/Housing

Height	22" / 559mm
Length	6.00" / 153 mm
Width	3.00" / 77 mm
Housing Material	Cast Aluminum or Cast Brass
Weight Alum	3.40 lbs / 1.54 kg

Lamp Base

Lamp Base	12V TS Wedge
-----------	--------------

Electrical

Input Voltage Range	9-15V AC/DC
Max Wattage	11.5W

Wire

36" of usable #18-2, SPT-1W leads


Notes

Fixtures include an 8" in-ground slotted stake (Cast Brass fixtures and Textured Ballard include a 14" stake) and gel-filled cable connectors. Lamps sold separately.

AVAILABLE FINISHES

AZT Textured Architectural Bronze	BKT Textured Black	CBR Centennial Brass
--	--------------------------	----------------------------

Visit Kichler.com

 **ACCENT LIGHT 16157 AZT**
12V Integrated LED Accent Light
16150-16158

PROJECT:
TYPE:

ORDERING:
COMMENTS:

FEATURES

- High lumen output in small body
- Custom optics for superb center-to-the-edge uniformity
- Available beam angle: 10°, 35° & 60°
- Complete sealed system for improved reliability
- Advanced ESD protection
- IP66 rated

PERFORMANCE

	200 Lumens	300 Lumens	500 Lumens
Input Voltage	9-15V	9-15V	9-15V
Volt Total @ 15VAC	3.5	5.25	10
Wattage	2.5	3.5	7
Efficiency (lm/W)	80	86	71
Halogen Replacement	20W	35W	50W

SPECIFICATIONS

Fixture

Light Source	Integrated LED
Number of LEDs	3 or 6
Kelvin Temperature	2700K, 3000K
Color Rendering Index	80
Beam Angles	10°, 35°, 60°

Input

Lumens	Input Current	Efficiency	Power Factor
200	48mA@15VAC	88.40%	0.653
300	578mA@15VAC	86.03%	0.706
500	1.1A@15VAC	86.90%	0.738

Output

Lumens	
High	500
Mid	300
Low	200

Environmental

Environmental Protection Rating	Wet
Operation Ambient Temperature	-25°C ~ +40°C
Storage Temperature	-40°C ~ +60°C
Expected Life Time	50K Hours > 75°C Tc Max

Mechanical & Housing Specification

Length	3.5" / 89 mm
Width	3.25" / 83 mm
Height	4.5" / 114 mm
Housing Material	Aluminum, Brass
Housing Color & Surface	Black/Bronze/CRB
Weight	Alum 1.05lb / 0.5kg, Brass 2.3lb / 1.1kg

Notes

Fixtures include an 8" in-ground slotted stake (Cast Brass fixtures and Textured Ballard include a 14" stake) and gel-filled cable connectors. Lamps sold separately.

AVAILABLE FINISHES

AZT Textured Architectural Bronze	BKT Textured Black	CBR Centennial Brass
--	--------------------------	----------------------------

KICHLER

FDOT Landscape Permit
Number 2021-L-496-00004



Gabriela Fojt
Digitally signed by Gabriela Fojt
Date: 2021.09.27 16:25:35 -04'00'

The Mirror of Paradise

Gabriela Fojt
LA 6667277
LC 26000628

3900 Galt Ocean Dr
Fort Lauderdale
FL 33308
Tel (954) 478 3064
www.florida-landscape.com
gabriela@themirrorofparadise.com



SCALE	1/8" = 1'-0"
DESIGNED BY	GW,GF
DRAWN BY	GF
CHECKED BY	GW,GF
CAD DWG.	
DATE	05.28.2021
REVISIONS	
for FDOT approval	07.09.2021
per FDOT comments	08.20.2021
per FDOT comments	09.16.2021
per FDOT comments	09.27.2021

ADRIAN STITTS
2500 SOUTH OCEAN BLVD
HIGHLAND BEACH, FL 33487
LIGHTING PLAN, DETAILS & NOTES