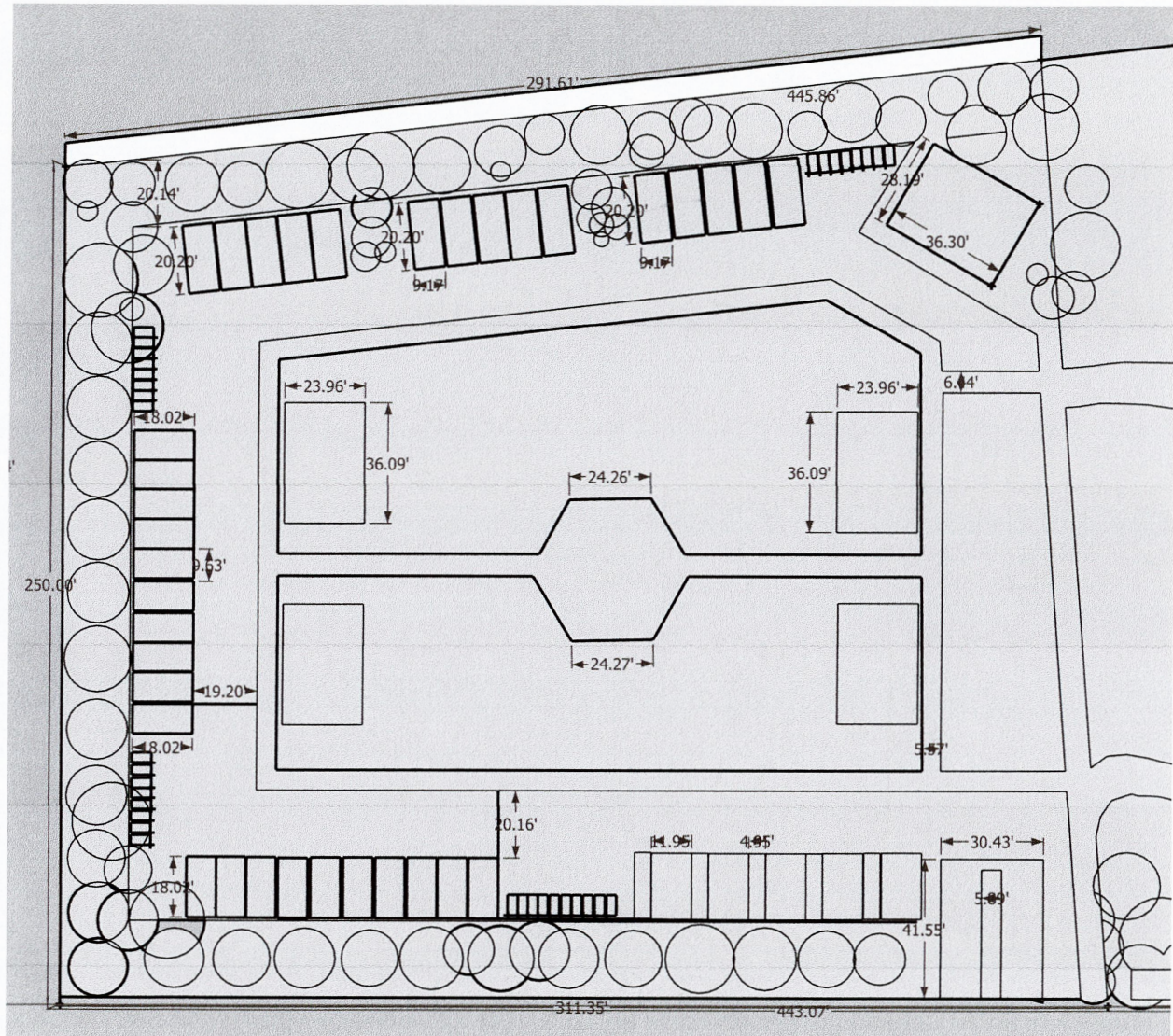
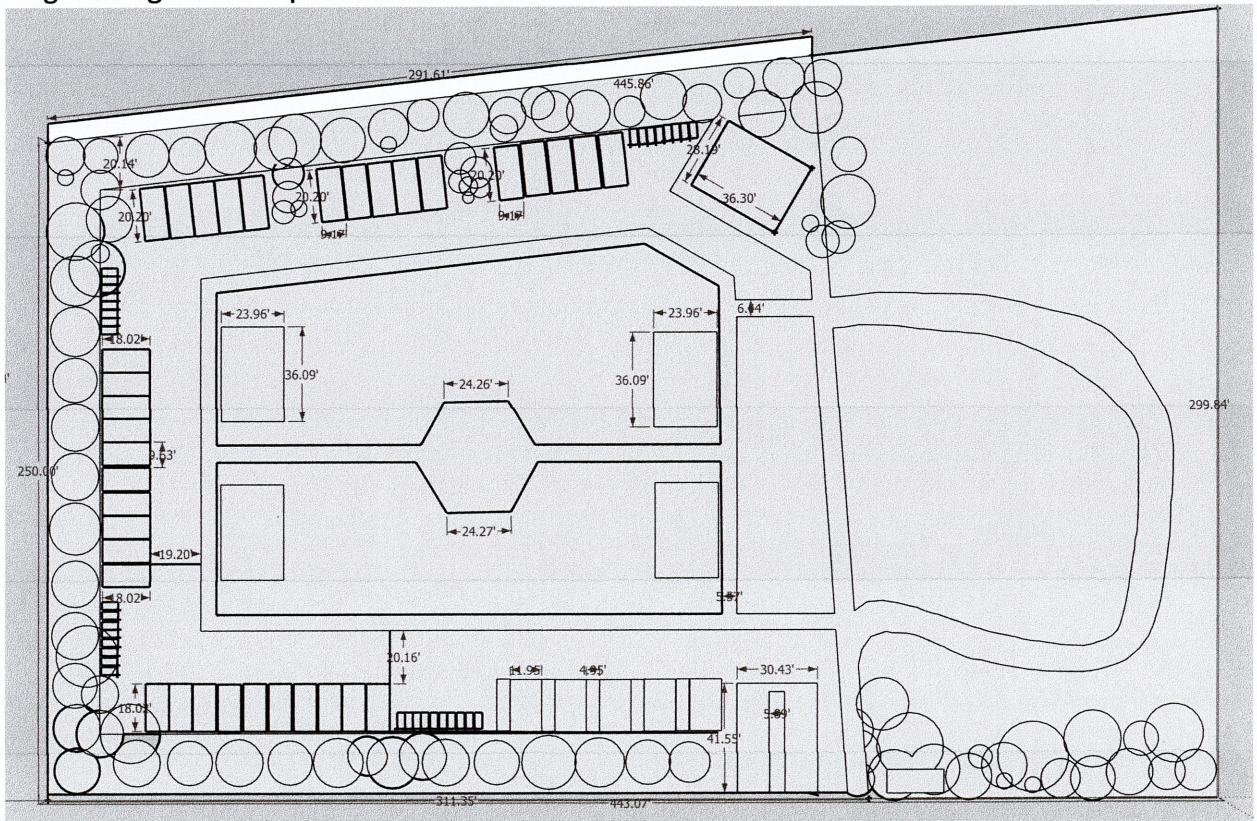


**PRESENTATION TO PALM BEACH COUNTY
NOVEMBER, 2024
MILANI PARK, HIGHLAND BEACH, FLORIDA
Margarita Chappelear, ED.S**

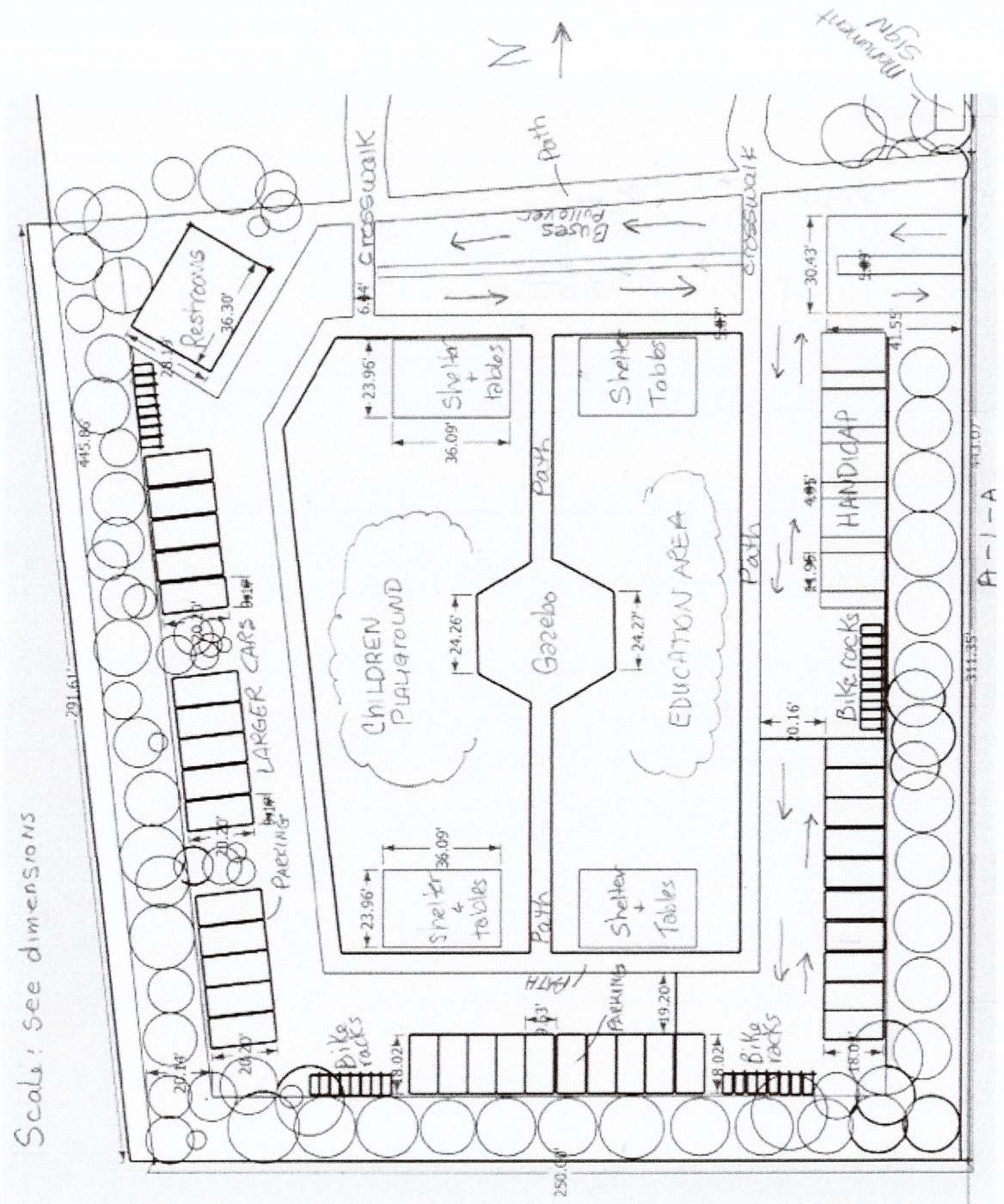


- 36' x 28' Men/Women Restrooms – Space for larger size if needed
- (34) Bike racks spaces @ 72" x 48"- to accommodate county-wide Bicycle Clubs and local residents who will be using the new widened State of Florida scenic bike lane trail on A-1-A
- (15) larger SUV parking spaces 9' x 20' standard size to accommodate beach goers and larger families
- (20) regular size 8'x 9.5' parking spaces

- (5) ADA handicap spots for beach access/bathrooms/pavilions/amenities
- (4) covered open air pavilions 24' x 36' to create a sense of openness as a gathering spot for picnics, events, or simply to provide shade and protection from sun and rain
- Walking paths 6' wide to allow for ADA and groups to access park areas around entire central open green area park
- Entrance (30.43' x 41.5') with 5' median landscaped strip to allow traffic entry and exit safety
- Central focal point octagonal gazebo open air (approx. 24' each side) creates sense of community for park goers and will become a landmark structure for the county
- 20' landscape buffer zone from neighbor property lines to promote harmony and cut down on noise
- Monument signage on Wetlands section of A-1-A large enough to be seen easily
- Proposed wetland boardwalk to utilize unused drainage area to become a nature feature at park
- Sea Turtle Education and native flora and fauna education to be featured at the A-1-A Section of the park
- Protected children's park amenities at the west end of the park closer to restrooms
- Benches, water fountains, picnic tables, and lighting to be addressed in more detail
- Large enough access space to accommodate school buses for educational science trips



Proposed Conceptual Ideas with some detail:



SUMMARY

Labor of Love

The following proposal is a labor of love for the residents of Palm Beach County and specifically Highland Beach-Boca Raton residents who welcome a beautifully designed open space multi-functional park with access to the historic Jap Rock section of Palm Beach County and its unique rock outcrop in a natural, pristine setting.

The Milani Park Model

On the west side of A-1-A across from the beach is 5.6 Acres of vacant land that inspires me to propose an environmentally friendly and engaging space with the intention to serve park users with their variety of needs; not just a ubiquitous parking lot. This is what this presentation is about; let us in the early planning stages create an exciting multi-use park that will become renowned as "The Milani Park" model.

We gather together

Pocket parks as they are known to communities in many countries are the new modern alternative to traditional parks with large asphalt parking lots. They provide residents a way to enjoy nature; whether they arrive by car, bicycle, or by foot in a natural setting. The benefits of this particular green space at Milani Park with its access to a pristine beach is second to none for recreation and a place for people to gather; this alone makes this site the most exciting park to be developed in Palm Beach County and I am thrilled my input and ideas are being considered.

This beautiful site

Milani Park vacant parcel is nestled between high traffic A-1-A that will soon be Widened by the State of Florida to feature a scenic by-way with emphasis on bicycle Users.

Meeting the recreational needs of the park user

Park users will arrive by in many ways. The propose design incorporates not only cars but bikes and walkers. Many beach goers and park users will be able to find shade, restroom, relief from weather conditions etc. with this design.

Park users will find an urban friendly park with amenities that include places to sit, drink water, use restroom facilities, meeting place, children's play area and local native plant and animal education.

Let the community embrace the focal point sculpture and education future generations
I propose a sea turtle sculpture to be donated to the park as a focal point as well as the octagonal gazebo centrally located to provide character to vacant land that is not just a parking lot. Other educational pursuits could include: seashell collections, artifacts found on the beach side, manatee & sea turtle education.

I want to thank Marci Woodward, Palm Beach County Commissioner rep for Highland Beach for having the vision and open mindedness to meet with me and Laura to gain input on what Palm Beach County residents would like to see in this park.

Aerial photos of existing site for discussion purposes:



